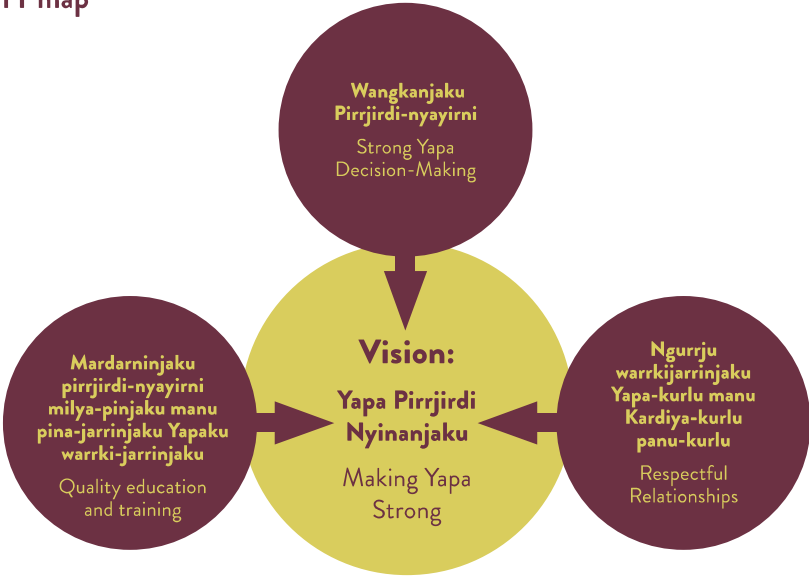


# 13 A Community Development Approach to Monitoring, Evaluation and Learning

Warlpiri Education and Training Trust (WETT)\*Yitaki-maninjaku, warrinrinjaku, payirrinjaku manu pina-jarrinjaku (YWPP)  
Community Research Team

## The WETT map



This map was designed by WETT Advisory Committee as a Monitoring, Evaluation and Learning Framework. It helps us to make strong decisions as Yapa by paying attention to each of these areas.

## Our Community Research Principles



\*Yapa means Aboriginal person in our Warlpiri language. Kardiya is a non-Aboriginal person. We have worked together as Yapa and Kardiya to build this project and these principles guide us.



**Training and developing our skills**

Each year we do training together as community researchers, building our skills and developing our research plan.



**How we collect stories**

We are guided by strong cultural protocols and safe ways of working to keep this work strong. Yapa collect stories from Yapa in safe and comfortable places, working respectfully with kardyia.



**Making sense of what we hear**

We reflect on the stories that we collect in “sense making” sessions and connect what we hear to the WETT map.



**Sharing with the community**

Sharing the stories back to the community first means they can give us feedback about what we have heard

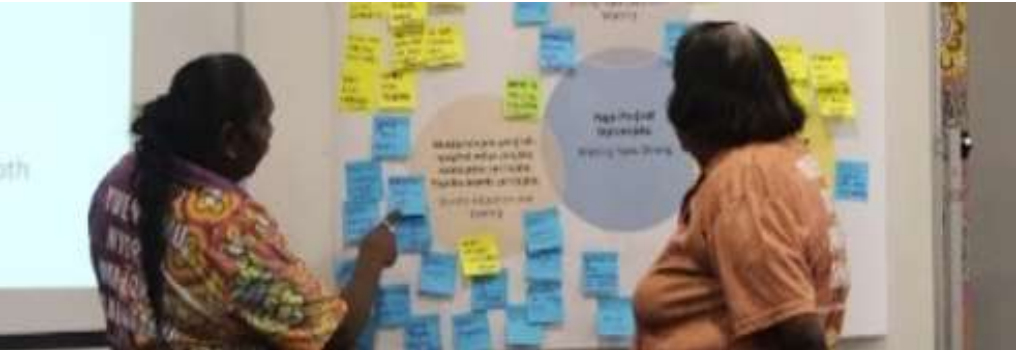
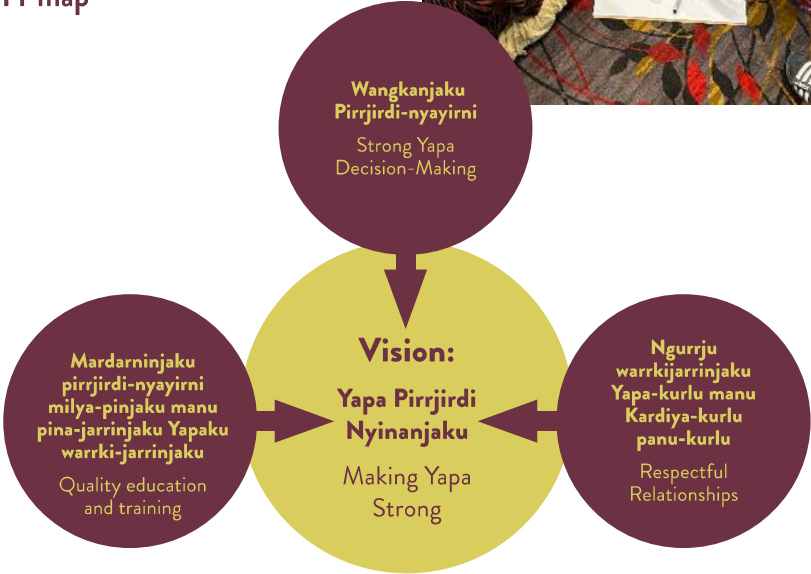


**How the WETT Advisory Committee uses the feedback**

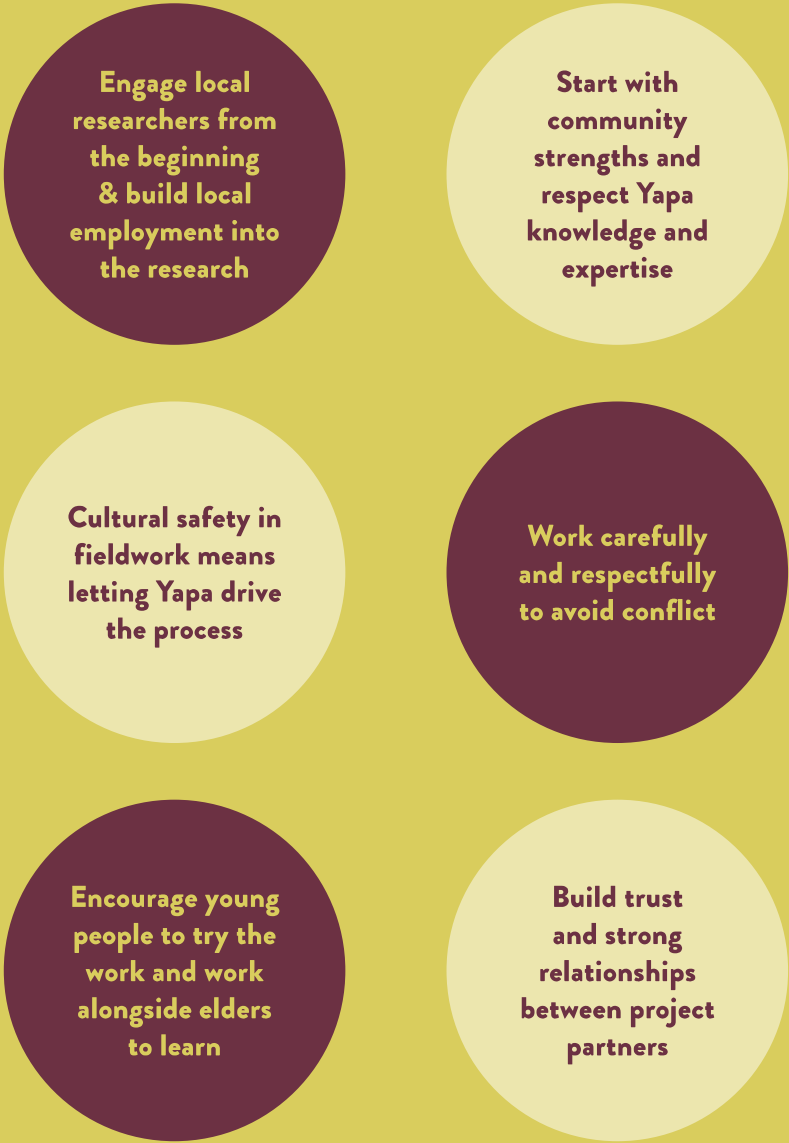
We bring the stories to the WETT Advisory Committee which helps them to make program decisions and undertake advocacy



The WETT map



Top Tips: Some good practices we have learned



Open communication, reflection and feedback for safety, learning and improvement