

THE JUDITH LUMLEY CENTRE

BIENNIAL REPORT 2017–2018



RESEARCH in:

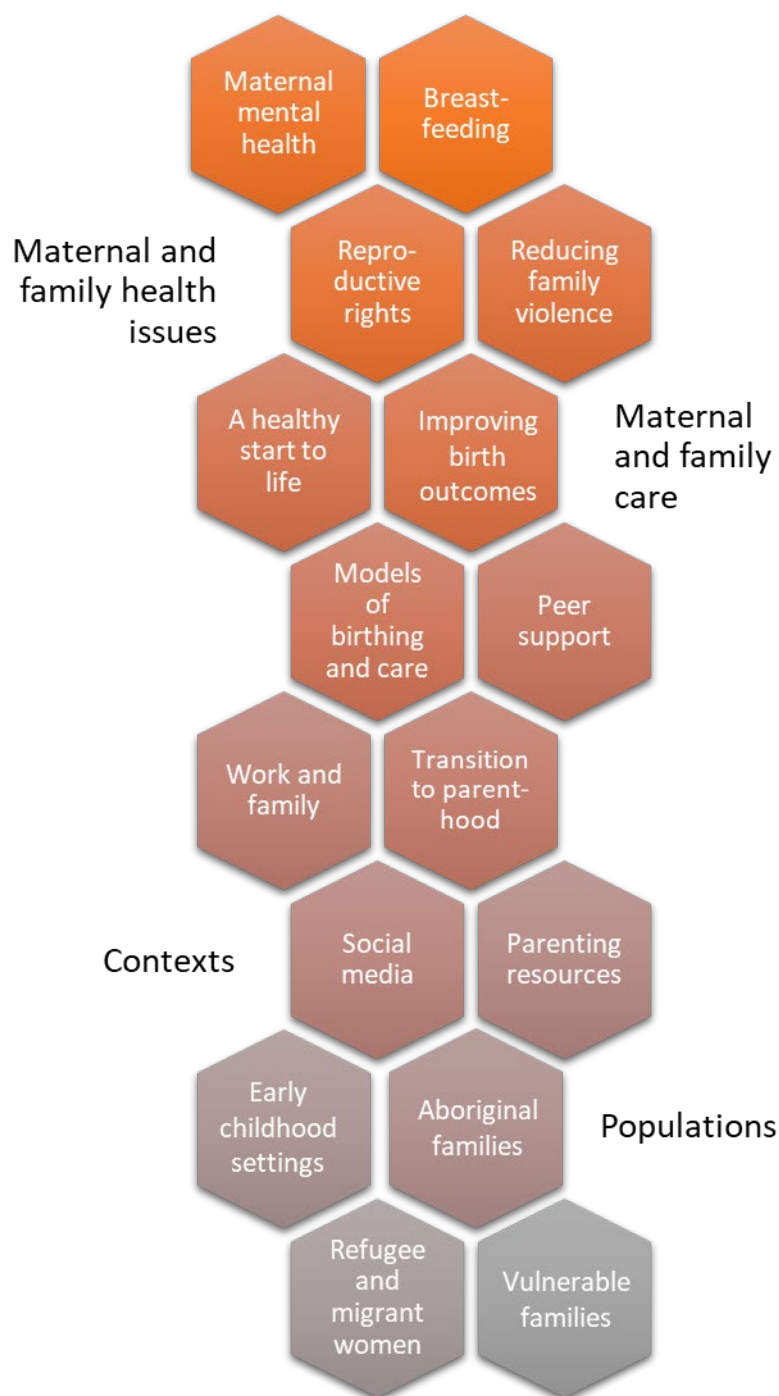
- Aboriginal and Torres Strait Islander family health
- Breastfeeding
- Mother and infant health and maternity services
- Planned parenthood and reproductive rights
- Reducing violence against women and children
- Transition to contemporary parenthood
- Work and family

Disclaimer

Every effort has been made to ensure the information contained in this publication is accurate and current at the date of printing.

Published by the Judith Lumley Centre, La Trobe University, August 2019.

La Trobe University is a registered provider under the Commonwealth Register of Institutions and Courses for Overseas Students (CRICOS).
La Trobe University CRICOS Provider Code Number 00115M



The Judith Lumley Centre

is a multidisciplinary public health research centre in the School of Nursing & Midwifery within the College of Science, Health and Engineering at La Trobe University. Established in 1991, our research addresses issues of major public health importance for mothers, young children and families.

We examine a range of maternal and family health issues, with a particular focus on pregnancy and the postpartum. We seek to identify how to enhance care services and the contexts families live in, to improve the health of mothers and their children.

We aim to

- undertake innovative research that will ultimately result in improvements to the health and wellbeing of mothers and their children
- disseminate our findings to scientific and professional colleagues and the broader community
- work with health service and community partners to ensure effective uptake of our findings into policy and practice
- provide an outstanding experience in postgraduate and continuing education.

We have a broad public health and population focus and an inclusive approach to the social and medical aspects of health and care for parents and children. A wide range of disciplines contribute to our research.

We emphasise the need for research, service development, evaluation and policy to be linked. We support testing interventions in randomised trials, research translation into clinical practice, and the implementation of effective and cost-effective interventions.

Table of contents

DIRECTOR'S REPORT	4
RESEARCH PROGRAM	7
Aboriginal and Torres Strait Islander family health	7
Healing the past by nurturing the future: Co-designing perinatal awareness, recognition, assessment and support strategies for Aboriginal and Torres Strait islander parents experiencing complex childhood trauma	7
Improving the health of Aboriginal mothers and babies through continuity of midwife care: A mixed methods translational study	8
Breastfeeding	9
The role of micro-organisms (<i>S.aureus</i> & <i>C.albicans</i>) in the pathogenesis of breast pain and infection in lactating women (CASTLE Study)	9
RUBY (Ringing up about breastfeeding early): Proactive peer (mother-to-mother) breastfeeding support by telephone	9
Supporting breastfeeding in local communities (SILC)	10
Understanding community attitudes and identifying design solutions to increase women's comfort with breastfeeding in public	10
Mother and infant health and maternity services research	11
The ABLE Study (Asking women aBout disabiliTiEs)	11
ECO – Exploring the introduction, expansion and sustainability of caseload midwifery in Australia	11
Exploring the feasibility of conducting an international multi-site randomised controlled trial to test if primary midwife-led care improves outcomes for migrant and refugee women	12
GEM Care: Exploring the feasibility and acceptability of group antenatal care and education – a pilot randomised controlled trial	12
IVY – Investigating an online community of support for emotional health in pregnancy	12
Diabetes and antenatal milk expressing (DAME): A randomised controlled trial	13
Maternity and newborn emergencies (MANE) program evaluation	14
Obstetric outcomes for immigrant women	14
Preventing postnatal depression in new mothers using telephone peer support (DAISY)	14
Birthplace in Australia: A prospective cohort study	14
The cross-country ultrasound study (CROCUS)	15
Enhancing Maternity care for Migrants: Research to Action (EMMA)	15
EXPerT – Exploring midwives' and nurses' perceptions of 'expertise'	15
Pregnancy and delivery related complications in Rwanda: Prevalence, associated risk factors, health economic impact and maternal experiences	15
Register-based studies of birth outcomes among migrant women in Sweden and Norway	16
Reproductive outcomes and migration (ROAM): An international collaboration	16
Your views matter: Exploring the experiences, satisfaction and needs of parents of infants admitted to Newborn Services at the Royal Women's Hospital	16
Planned parenthood and reproductive rights	17
An evaluation of access and equity in the provision of medical abortion following the introduction of mifepristone on the Australian Pharmaceutical Benefits Scheme	17
SPHERE – The Centre of Research Excellence in Sexual and Reproductive Health for Women: Achieving Better Outcomes through Primary Care	17
Accessing contraception for emergency supply (ACCESS)	18
The Australian contraceptive choice project (ACCORD)	18

Reducing violence against women and children	19
Harmony – a whole of general practice intervention with bilingual GPs and domestic violence advocates to improve identification and referral of women experiencing family violence, especially South Asian communities	19
Embedding a curriculum for health providers responding to violence against women and children in Timor-Leste	20
Tackling alcohol-related domestic violence	20
Training needs analysis and professional development plan for Victorian maternal and child health nurses	20
Centre for Research Excellence to Promote Safer Families	20
I-DECIDE – an internet-based safety decision aid for women experiencing intimate partner violence: A randomised controlled trial	21
Reconnecting mothers and children after violence (RECOVER): The Australian child–parent psychotherapy feasibility study	21
The Safe pregnancy study – promoting safety behaviours in antenatal care among Norwegian, Pakistani and Somali pregnant women	21
Women’s health and safety study: Fertility, domestic violence and women’s experiences of health services in Timor-Leste	21
Transition to contemporary parenthood – Preparation and support	22
Cross-national validation of child language developmental trajectories	22
EHLS at School: The school-age follow-up of the Early Home Learning	22
Evaluation of the Growing Together Parenting Kit: A mixed methods study	23
Media reporting of ‘stranger danger’ and other factors relating to children’s independent mobility	23
Poverty reduction for single mothers: The role of child support payments	23
Recruiting, retaining and tracing research participants via social media: Feasibility and ethics	24
Children’s Attention Project: Longitudinal study of children with and without ADHD	24
SMS for Dads: Multi-Centre randomised controlled trial	24
‘Take A Breath’: Videoconferencing group intervention for parents of children with life-threatening illness and injury	25
Ten-year follow-up of the Maternal Health Study	25
Work and family	26
Families at work: An online survey of employed Australian parents	26
Upwards support for managers at work: The role of gender and parent-status	26
Work family balance, parenting and family wellbeing	27
Working out Work at La Trobe / Your wellbeing at work	27
VALE JUDITH LUMLEY	28
STAFF	29
POSTGRADUATE STUDY	32
Judith Lumley Scholarship	34
LECTURES AND PRESENTATIONS	35
AWARDS	38
PUBLICATIONS	39
FUNDS	48

Director's Report

DIRECTOR'S REPORT



Welcome to this, our combined 2017 and 2018 Annual Reports for The Judith Lumley Centre (JLC). A lot has happened over this time with many changes in staffing, students and our physical location.

Sadly, we have said final goodbyes to our Foundation Director, friend and mentor Professor Emerita Judith Lumley who passed away in October 2018. Judith's legacy lives on through our research. Over the last two years we have also celebrated many achievements. These include funding successes in the form of new NHMRC grants and fellowships, a publication in *The Lancet* and a significant expansion in our research programs.

2017 started with change in terms of Angela Taft standing down from her position as JLC Director – and change was a feature of the next 18 months.

Thank you to Angela Taft

At the end of 2016, Angela Taft completed her three-year term as Director and decided not to continue so as to concentrate on her research. This was a choice that brought immediate benefits, with Angela involved in two successful NHMRC CRE applications and leading a successful NHMRC grant application to investigate a whole of general practice intervention to reduce domestic violence in migrant and refugee communities.

We thank Angela for her leadership of the JLC across 2014–2016. The Centre blossomed under her guidance with significant new partnerships formed, especially with the State Government and various stakeholders in the areas of domestic violence and alcohol prevention. She oversaw the integration of the Transition to Contemporary Parenthood Program staff into the Centre, making all feel welcome and supported. The Centre grew significantly during her tenure – the number of staff doubled and there was a 50% increase in higher degree research student enrolments. This was paralleled by marked gains in key research indicators – increasing from a total of \$1.8M funding and 34 journal publications in 2014 to \$2.8M and 59 journal publications in 2016.

Relocation to Bundoora

2017 was the last year for JLC in central Melbourne when the University ended its lease on Franklin Street and relocated occupants to the Bundoora and City (Collins St) campuses. After several happy years, we were sad to say goodbye to our somewhat quirky office space, the various Public Health and Palliative Care academics who shared the third floor with us, our second floor neighbours – the Australian Research Centre for Sex, Health and Society and the Centre for Alcohol Policy Research, and our all-important ground floor colleagues, Wayne and Greg, who managed building access, security and all things practical. The one feature we don't miss is the elevator and the recurrent concerns as whether it would actually move.

In December 2017, we moved into our purpose-designed refurbished space within the School of Nursing and Midwifery on the third floor of the George Singer Building at the Bundoora Campus. The refurbishment was undertaken as part of a major investment by La Trobe in ensuring state-of-the-art research, teaching and learning facilities. It involved a complete gutting of the existing 1970s style floor plan to create varied office and open plan workspaces. Major updates of meeting rooms and the creation of a modern and airy tearoom has ensured School-wide benefits. The relocation has helped to cement JLC's position within La Trobe, opening new opportunities for formal and informal participation in the day-to-day activities of the University.

Snapshot 2017



Director's Report

Highlights of 2017 and 2018

Despite the disruptions associated with relocating the Centre, JLC has had two very strong years. Our funding has continued to grow with external funding of \$1.9M in 2017 and \$2.3M in 2018, and around \$3.7M total funding for each year. Overall staff levels have increased slightly (up from 16 full time equivalent in 2017 to around 20 in 2018), and our publication rates (around 60 papers per year), student enrolments (a cohort of around 30) and graduations (4 per year) have remained stable.

Major highlights of 2017 and 2018 include:

- publication in *The Lancet* of the main outcomes paper for the DAME (Diabetes and Antenatal Milk Expressing) Study (Della Forster, Lisa Amir, Anita Moorhead and others) conducted in partnership with the Mercy Hospital for Women and the Royal Women's Hospital (see also our [Newsletter #46](#))
- the *Victorian Public Healthcare Award 2017* awarded to the DAME Study team (see also our [Newsletter #47](#))
- nationally competitive grant funding awarded to Angela Taft (NHMRC project grant funding for the HARMONY study) and Cath Chamberlain (NHMRC project grant, a prestigious NHMRC Career Development Fellowship and Lowitja Institute grant funding).
- The Judith Lumley Scholarship for a high achieving HDR scholarship holder was awarded to Charlie Smithson for her PhD project examining the prevalence, identification and experiences of women with a disability using maternity services at the Royal Women's Hospital.
- JLC students graduating with a PhD: Fetene Belihu, Laura Biggs, Miranda Buck, Maggie Flood, Moni Rani Saha, Sonia Reisenhofer, Laura Whitburn and Ingrid Wilson
- In recognition of our expertise in the field, JLC (Leesa Hooker, Angela Taft, Jan Nicholson, Lael Ridgway) were selected by the Victorian Department of Education and Training to assess the Maternal and Child Health (MCH) service's current ability to respond to family and domestic violence, and design training to be received by all MCH nurses over the next four years.
- At completion of the formal funding period for Roberta Holmes' donation, the Transition to Contemporary Parenthood Program has actively engaged with over 9500 parents, co-authored 110 journal publications, reached over 2.5 million individuals via print and broadcast media, and achieved sustainability in funding until 2021 with a 163% return on investment in 5 years.

Staff and student changes

Staff and student movements across 2017 and into 2018 were many. Susan McDonald retired at the end of 2018 from her joint position as Professor of Midwifery at La Trobe University and the Mercy Hospital for Women. In this position, Sue was an advocate for clinically informed nursing and midwifery research and the promotion of research informing quality practice. She has published over 60 peer-reviewed papers and attracted \$6.6 million in research funds during her research career of more than 25 years. She also played important roles working to improve maternal health in Timor-Leste and supervising many JLC HDR students.

Departures from the Transition to Contemporary Parenthood Program reflected the Bundoora relocation, completion of fieldwork on the EHLS at School project and the end of the Roberta Holmes' donation funding period. These included Olga Tsironis (who moved to an Executive Assistant position in the State Government), Naomi Hackworth (to the Parenting Research Centre), Elizabeth Westrupp (to Deakin University), Clair Bennett (nee Cullen, to the USA), Cattram Nguyen (upon completion of her two-year secondment from the Murdoch Children's Research Institute), and part-time/casual staff Anna Fragkoudi, Andisheh Vahedi, Lisa Pascoe, and Ellen Koutsodimitropoulos. Shannon Bennetts has taken on the role of EHLS at School coordinator overseeing the completion of the fieldwork, data coding, linkage and analysis.

Snapshot 2018



Director's Report

Some of our long-term staff and students are not able to commute to Bundoora. Helene Johns, Maggie Flood, Méabh Cullinane and Heather Wallace work mostly from the Royal Women's Hospital, the Collins Street campus or home. While video conferencing assists us to keep in touch, we do miss their regular presence in the Centre.

Watching our graduates moving on to the next stages of their careers is always a pleasure. Kristina Edvardsson, Miranda Buck and Laura Biggs have gone to teaching positions with La Trobe's School of Nursing and Midwifery at the Northern Clinical School for Kristina and Miranda, and to the Australian Catholic University for Laura. Lester Jones is continuing his PhD studies from Singapore where he has accepted an academic position at the Singapore Institute of Technology. He is accompanied in the move by his partner and former JLC Post-doctoral Fellow Ingrid Wilson and their children.

Taylyn Hulse and Zoe Marchant held administrative roles with JLC during 2017 and/or 2018, providing much needed and greatly appreciated support (along with Danielle Hearn and Denise Strong from the School of Nursing and Midwifery) in managing the many complex arrangements associated with our move. Finally, after some time away from the University pursuing other interests, Simone Pakin has returned to an administrative role supporting the Centre.

New staff joining JLC during 2017 or 2018 included Ann Wilson and Emma Sayers working on the new NHMRC-funded HARMONY project, and Catherine Chamberlain who is heading an exciting new program of research seeking to prevent the intergenerational transmission of trauma in Aboriginal families. Cath's work, along with that of Helen McLachlan, marks a major expansion of our efforts to address health inequities amongst Australia's Indigenous peoples. This requires strong respectful relationships with families and communities, and through Cath's work, JLC now employs Naomi Ralph in Melbourne, Yvonne Clarke in South Australia co-located with the South Australian Health and Medical Research Institute, and another position co-located at the Central Australian Aboriginal Congress in Alice Springs.

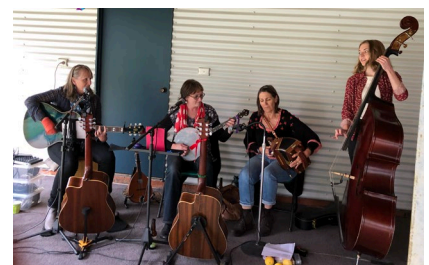
Staff recognition

JLC also had an outstanding year in terms of staff recognition through promotion Catherine Chamberlain was promoted to Associate Professor; Amanda Cooklin to Senior Research Fellow; and Shannon Bennetts and Sharinne Crawford to Research Fellow. All were thoroughly well-deserved recognitions.

Finally, it is good to note that some defining features of JLC remain strong. We continue to regularly acknowledge staff and student achievements – whether large or small. This tradition, established by Judith, remains an important sign of our core values as a Centre. Often such acknowledgements are accompanied by cake! And consistent with the theme of good food and company – the 2018 year ended with a relaxing family picnic in the beautiful Yarra Valley, with live music from our talented staff and friends.

Jan Nicholson, Centre Director

April 2019



Research Program



ABORIGINAL AND TORRES STRAIT ISLANDER FAMILY HEALTH

Program Leads: Professor Helen McLachlan and Associate Professor Catherine Chamberlain

JLC has had a long-held commitment to reducing the substantial health inequities experienced by Aboriginal people. The perinatal period offers a unique window of opportunity to address these inequities. In 2015, we were awarded a large NHMRC Partnership grant to undertake our first large scale project to improve the health of Aboriginal mothers and their babies.

In 2017, JLC was very pleased to welcome Catherine Chamberlain to JLC. Cath is an NHMRC Career Development Fellow and Associate Professor. A descendant of the Trawlwoolway People (Tasmania), her research program aims to improve Indigenous health equity by developing strengths-based family-focussed strategies in pregnancy, birth and early childhood. She has over 25 years' experience in reproductive and child health, including program and hospital service management, policy implementation, guideline development, evidence-based practice and research. Her mixed methods research experience includes qualitative research, epidemiological research, research translation and evidence synthesis.

Soon after arriving at JLC, Cath was successful in receiving funding for the '*Healing the Past by Nurturing the Future*' project which aims to prevent the intergenerational transmission of trauma, recognising the transition to parenthood as an opportunity for healing and growth. Funded by the Lowitja Institute and NHMRC from 2018–2021, this project involves collaborative partnerships with 11 institutions and five service organisations across three jurisdictions – Northern Territory, South Australia and Victoria.

HEALING THE PAST BY NURTURING THE FUTURE: CO-DESIGNING PERINATAL AWARENESS, RECOGNITION, ASSESSMENT AND SUPPORT STRATEGIES FOR ABORIGINAL AND TORRES STRAIT ISLANDER PARENTS EXPERIENCING COMPLEX CHILDHOOD TRAUMA



Catherine Chamberlain, Jan Nicholson, Yvonne Clark and Helen McLachlan; in collaboration with Graham Gee, Stephanie Brown, Deirdre Gartland and Fiona Mensah, Murdoch Children's Research Institute; Judy Atkinson and Caroline Atkinson, We Al-li Pty Ltd; Helen Herrman, Orygen; Karen Glover, South Australian Health and Medical Research Institute; Sandra Campbell, James Cook University; Tanja Hirvonen, Flinders University; Amanda Mitchell, Aboriginal Health Council of South Australia; Shawana Andrews, University of Melbourne; Sue Brennan, Monash University; Danielle Dyal, Aboriginal Medical Services Alliance Northern Territory

In partnership with the Central Australian Aboriginal Congress (Alice Springs), Nunkuwarrin Yunti of South Australia and the Women's and Children's Health Network (South Australia), the Royal Women's Hospital and Bouverie Family Healing Centre (Melbourne), we are undertaking a four year Lowitja Institute and NHMRC funded community-based participatory

Research Program

action research study which aims to co-design acceptable and feasible perinatal awareness, recognition, assessment and support strategies for Aboriginal and Torres Strait Islander parents experiencing complex childhood trauma.

FUNDING: NHMRC Project Grant and Lowitja Institute grant

STATUS: In progress

www.latrobe.edu.au/ilc/research/healing-the-past

IMPROVING THE HEALTH OF ABORIGINAL MOTHERS AND BABIES THROUGH CONTINUITY OF MIDWIFE CARE: A MIXED METHODS TRANSLATIONAL STUDY

Helen McLachlan, Della Forster, Michelle Newton, Catherine Chamberlain, Fiona McLardie-Hore, Pamela McCalman; in collaboration with Sue Kildea, University of Queensland, Jane Freemantle and Karyn Ferguson, University of Melbourne; Jennifer Brown and Simone Andy, Victorian Aboriginal Community Controlled Health Organisation; Jeremy Oats and Ngaree Blow, Melbourne Health; Marika Jackomos, Mercy Hospital for Women; Jacqueline Watkins, Western Health; Sue Jacobs, Jenny Ryan and Helena Maher, The Royal Women's Hospital; Susan Donath, Murdoch Children's Research Institute; Lisa Gold, Deakin University

The *Baggarrook Yurrongi* (Woiwurrung language of the Wurundjeri people) meaning 'Woman's Journey' and the *Nuraagh Manma Buliana* (Yorta Yorta language) meaning 'All of us working together in pregnancy' is a 5-year NHMRC funded Partnership Project with the Victorian Aboriginal Community Controlled Health Organisation (VACCHO), the Royal Women's Hospital, the Mercy Hospital for Women, Sunshine Hospital and Goulburn Valley Health.

The study is evaluating the effect of continuity of midwifery care in pregnancy, labour, birth and the postnatal period (called caseload midwifery) on perinatal outcomes for Aboriginal women and their infants.

Our previous research (the COSMOS trial) found that caseload improves maternal and infant outcomes, and this care model is now regarded as the gold standard. Yet many eligible Aboriginal and Torres Strait Islander pregnant women are not offered caseload care. The aim of the project is to help close the gap in access to this model of care and improve the health outcomes for Aboriginal women and their babies.

Highlights of the project to date include the successful introduction of the model at the Royal Women's in March 2017, Sunshine Hospital in October 2017, and the Mercy Hospital in April 2018.

Since the introduction of the model there has been a more than 10-fold increase in the number of Aboriginal women having access to caseload midwifery. A key aspect of the successful implementation of the program has been the

collaboration, communication and partnership with Aboriginal hospital and community partners.

FUNDING: NHMRC Partnership Grant and funding from five partner organisations

STATUS: In progress



First anniversary of the caseload midwifery program for Aboriginal and Torres Strait Islander families at the Royal Women's Hospital

Research Program



BREASTFEEDING

Program Lead: Associate Professor Lisa Amir

The Centre is interested in all aspects of breastfeeding. Our staff and students have conducted randomised trials, cohort studies, cross-sectional studies, audits and qualitative studies in this area. Our projects include clinically focused studies on nipple and breast pain and infection and the use of medicines for breastfeeding women, as well as interventions aiming to increase the maintenance of breastfeeding in communities with low rates. We have partnerships with the major Victorian maternity services, Maternal and Child Health services, and the Australian Breastfeeding Association, the main advocacy group in Australia.

A highlight of 2017 was the publication of the primary outcomes of our NHRMC-funded Diabetes and Antenatal Milk Expressing (DAME) trial in *The Lancet* in June. The project won the 2017 Victorian Public Healthcare Award “Improving health care through clinical research” (see details under the *Mother and Infant Health and Maternity Services Research Program*)

THE ROLE OF MICRO-ORGANISMS (*S.AUREUS* & *C.ALBICANS*) IN THE PATHOGENESIS OF BREAST PAIN AND INFECTION IN LACTATING WOMEN (CASTLE STUDY)

Lisa Amir, Méabh Cullinane; in collaboration with Suzanne Garland and Sepehr Tabrizi, Bio21 Molecular Science & Biotechnology, University of Melbourne; Susan Donath, Murdoch Children’s Research Institute; Catherine Bennett, Deakin University

This project is a descriptive study of 360 breastfeeding women, recruited from the Royal Women’s Hospital and Frances Perry House. The aim was to investigate the role of microorganisms in nipple and breast pain in breastfeeding women. Secondary outcomes were maternal physical and mental health in the first eight weeks postpartum.

FUNDING: NHMRC Health Professional Research Fellowship (LA); NHMRC Project Grant; NHMRC Equipment Grant; Helen Macpherson Smith

STATUS: Primary outcomes published in *BMJ Open* in 2013, one paper published in 2017, two more papers submitted

www.latrobe.edu.au/jlc/research/breastfeeding/castle

RUBY (RINGING UP ABOUT BREASTFEEDING EARLY): PROACTIVE PEER (MOTHER-TO-MOTHER) BREASTFEEDING SUPPORT BY TELEPHONE

Della Forster, Lisa Amir, Helen McLachlan, Touran Shafiei, Rhonda Small, Fiona McLardie-Hore, Heather Grimes; in collaboration with Anita Moorhead, Royal Women’s Hospital; Mary-Ann Davey, Christine East, Monash University; Cindy-Lee Dennis, University of Toronto; Lisa Gold, Deakin University; Kate Mortensen and Susan Tawia, Australian Breastfeeding Association

The RUBY (Ringing Up about Breastfeeding early) study aimed to determine whether proactive telephone-based peer support during the postnatal period increases the proportion of infants being breastfed at six months of age. RUBY was a multicentre, randomised controlled trial conducted in three hospitals in Victoria, between February 2013 and December 2015.

Over 1150 first-time mothers intending to breastfeed were recruited at one of the three hospitals (Royal Women’s, Monash Health, Western Health Sunshine) after birth and prior to hospital discharge. They were randomly assigned to usual care or usual care plus proactive telephone-based

Research Program

breastfeeding support from a trained peer volunteer for up to six months postpartum.

The study found that infants of women allocated to telephone-based peer support were more likely than those allocated to usual care to be receiving breast milk at six months of age (intervention 75%, usual care 69%).

FUNDING: The Felton Bequest, Australia and La Trobe University

STATUS: Main outcomes paper submitted

www.latrobe.edu.au/ilc/research/breastfeeding/ruby

SUPPORTING BREASTFEEDING IN LOCAL COMMUNITIES (SILC)

Helen McLachlan, Della Forster, Lisa Amir, Rhonda Small, Méabh Cullinane, Touran Shafiei, Lyn Watson, Rhian Cramer, Lael Ridgeway

Breastfeeding provides infants with the optimal start to life. However, exclusive breastfeeding for six months is uncommon in Australia. Increased breastfeeding support early in the postpartum period may improve breastfeeding maintenance.

With funding from the Victorian Department of Education and Early Childhood Development, we conducted a three-arm cluster trial evaluating two community-based interventions aimed at increasing breastfeeding rates in ten Victorian Local Government Areas.

The trial arms were: 1) standard care; 2) early postnatal home-based breastfeeding support visits to women at risk of breastfeeding cessation, or 3) home-based breastfeeding support visits plus access to community-based breastfeeding drop-in centres.

We found no difference in breastfeeding maintenance at three, four or six months in either the home visit or home visit plus drop-in compared with the comparison arm. Early home-based and community-based support proved difficult to implement. Interventions to increase breastfeeding in complex community settings require sufficient time and partnership building for successful implementation.

FUNDING: Victorian Department of Education and Early Childhood Development

STATUS: Final report submitted; protocol, primary outcomes and two other papers published, other papers in preparation

<https://www.latrobe.edu.au/ilc/research/breastfeeding/silc>

UNDERSTANDING COMMUNITY ATTITUDES AND IDENTIFYING DESIGN SOLUTIONS TO INCREASE WOMEN'S COMFORT WITH BREASTFEEDING IN PUBLIC

Lisa Amir, Stephanie Amir, Helene Johns; in collaboration with Julie Rudner, La Trobe University; Jenny Donovan, Inclusive Design; Miranda Buck, Australian Breastfeeding Association; Sinead Currie and Pat Hoddinott, University of Stirling

This project explores design features and community attitudes that invite or deter breastfeeding in public. We conducted interviews and focus groups with breastfeeding mothers in three local government areas in 2016 (Rural City of Swan Hill, City of Greater Bendigo and City of Melbourne) and at The Royal Women's Hospital in 2018.

We received input from over 80 mothers speaking five languages, as well as health professionals and council planning staff. Using these data, we have developed design guidelines that outline how a range of everyday shared spaces could become breastfeeding-friendly as well as the optimal design characteristics for dedicated breastfeeding spaces.

FUNDING: Building Healthy Communities Research Focus Area

STATUS: Papers in preparation



Standees at the entrance of The Royal Women's Hospital for the Breastfeeding in Public project

Research Program



MOTHER AND INFANT HEALTH AND MATERNITY SERVICES RESEARCH

Program Leads: Professor Della Forster and Professor Helen McLachlan

JLC research in the area of pregnancy and birth focuses on ensuring that the best possible outcomes are achieved for women and their infants. Some of our studies focus on specific groups of women, for example immigrant women or other vulnerable groups, other studies look more broadly. We are undertaking many state-wide and national studies in this area, mostly with a focus on describing and improving current practice. An additional area of focus is ensuring that the views of clinicians providing care (such as midwives and doctors) are taken into account.

A highlight of 2017 was the publication of the primary outcomes of our NHRMC-funded Diabetes and Antenatal Milk Expressing (DAME) trial in *The Lancet* with accompanying expert opinion piece (Forster, DA et al. *The Lancet* 2017, 389(10085): 2204 – 2213; Berens, P. *The Lancet* 2017, 389(10085):2167-2168).

The project won the 2017 Victorian Public Healthcare Award for “improving health care through clinical research”.

We were also awarded a new NHMRC grant for DAISY – the Depression and Anxiety Peer Support Study which commenced in 2018.

THE ABLE STUDY (ASKING WOMEN ABOUT DISABILITIES)

Exploring the prevalence and experiences of women with disabilities who use maternity services at the Royal Women’s Hospital in Victoria, Australia

Helen McLachlan, Della Forster, Michelle Newton, Charlie Smithson

It is estimated that more than one billion people worldwide are living with a disability. However, limited information exists on the disability status and needs of women during pregnancy. In Australia, disability status is not included in the Perinatal National Minimum Data Set.

While there is a limited amount of qualitative research focusing on the experiences of pregnancy and childbirth of women with a disability, there is an absence of quantifiable data. We aim to address this gap by exploring the prevalence and identification of women with disabilities who utilise maternity services. We will also gain insight into the experiences of women who identify as having a disability

about how they found their pregnancy, labour and birth and the early postnatal period.

FUNDING: The Royal Women’s Hospital

STATUS: Data collection

ECO – EXPLORING THE INTRODUCTION, EXPANSION AND SUSTAINABILITY OF CASELOAD MIDWIFERY IN AUSTRALIA

Michelle Newton, Kate Dawson, Della Foster, Helen McLachlan

Caseload midwifery is a maternity model of care, which aims to provide women with continuity of care from a known midwife. There is strong evidence that caseload care decreases birth interventions (e.g. caesarean births, analgesia in labour), increases women’s satisfaction with care and improves infant outcomes. This model of care is being promoted as the ‘gold standard’ and an increasing number of hospitals are introducing the model. However, very little is known about the workforce implications, and therefore the possible scale and sustainability of this style of care.

Research Program

The ECO study aims to explore the sustainability of caseload midwifery in Australia. This cross-sectional study involved a national survey of 149 maternity managers and 542 midwives from all public maternity hospitals in Australia and a survey of 129 Victorian graduating midwifery students.

FUNDING: None

STATUS: Data collection complete; four papers published, one in preparation

EXPLORING THE FEASIBILITY OF CONDUCTING AN INTERNATIONAL MULTI-SITE RANDOMISED CONTROLLED TRIAL TO TEST IF PRIMARY MIDWIFE-LED CARE IMPROVES OUTCOMES FOR MIGRANT AND REFUGEE WOMEN

Helen McLachlan, Touran Shafiei, Della Forster, Michelle Newton, Molly Allen; in collaboration with Jane Sandall, King's College, London; Mia Ahlberg, Karolinska Institute, Stockholm; Regina Quiazon, Multicultural Centre for Women's Health

Compared with non-immigrant women, those having a baby in a new country have more negative birth experiences, and many have poorer maternal and infant outcomes. Possible factors include suboptimal care (e.g. fewer visits, less screening), discrimination, cultural/language issues, financial stress, poor supports, and difficulty navigating health systems.

Caseload midwifery (primary midwife-led care) where women have continuity from a 'known' midwife during pregnancy, labour, birth and postpartum, is associated with better clinical and psychosocial outcomes, however few migrant and refugee women have access to caseload care.

In partnership with researchers in the United Kingdom and Sweden, we are conducting a feasibility study for an international multi-site randomised trial to test if primary midwife-led care improves outcomes for migrant and refugee women.

FUNDING: Building Healthy Communities Research Focus Area

STATUS: Data collection

GEM CARE: EXPLORING THE FEASIBILITY AND ACCEPTABILITY OF GROUP ANTENATAL CARE AND EDUCATION – A PILOT RANDOMISED CONTROLLED TRIAL

Della Forster, Robyn Matthews, Rebecca Hyde; in collaboration with Kaye Dyson, Deborah Fox and Trish Ryan, The Royal Women's Hospital

Group-based antenatal care, pregnancy care and childbirth / parenting education is undertaken in groups of 8–10 women for 6–8 sessions with two midwives. Evidence regarding potential benefit or harm is inconclusive, with some

suggestion the model is associated with fewer preterm births. A Cochrane review concludes more evidence is needed.

We aimed to test the feasibility of implementing an adequately powered randomised controlled trial (RCT). For this we conducted a two-arm pilot RCT. Women allocated to the intervention received group-based antenatal care and education (known as *GEM Care*, Group Education and Midwifery Care). Usual care included hospital-based midwife, caseload or team care, or shared care with a GP. Participants were English-speaking, primiparous, low risk, with no more than 24 weeks gestation at booking. Clinical outcome data were collected from the medical record. A telephone interview at six weeks postpartum explored women's views. Focus groups explored midwives' views.

FUNDING: The Royal Women's Hospital

STATUS: Pilot and data collection complete, analysis underway

IVY – INVESTIGATING AN ONLINE COMMUNITY OF SUPPORT FOR EMOTIONAL HEALTH IN PREGNANCY

Della Forster, Helen McLachlan, Touran Shafiei, Laura Biggs, Sara Couch; in collaboration with Terri Smith, Cathy Wyett, PANDA; Greg Wadley, University of Melbourne

Perinatal mental illness is a major public health issue, with serious and costly health consequences for women, their infants and families. Many women don't seek help; potential barriers include fear of stigmatisation, fear of failure and lack of support. These barriers may be overcome by more flexible models of support, such as an online peer support program.

This study aims to develop and test the feasibility, acceptability and functionality of a moderated online peer support App to be used on smart phones, tablets or computers, to reduce perinatal depression and anxiety in women at increased risk.

The project has been undertaken in collaboration with PANDA – Perinatal Anxiety & Depression Australia – Australia's peak consumer perinatal mental health organisation.

An iterative user-centred approach was used to design and develop the App, via a series of interviews, focus groups and design workshops with consumers, stakeholders and software designers. We are preparing to conduct a pilot randomised controlled trial (RCT) to test potential impact and engagement as well as to inform a large adequately powered RCT.

FUNDING: Norman Beischer Medical Research Foundation

STATUS: App developed; final report submitted; papers in preparation

Research Program

DIABETES AND ANTENATAL MILK EXPRESSING (DAME): A RANDOMISED CONTROLLED TRIAL



Some of the DAME trial team at the launch of *The Lancet* paper

Della Forster, Lisa Amir, Anita Moorhead; in collaboration with Susan Jacobs, Peter Davis, Amanda Aylward and Rachael Ford The Royal Women's Hospital; Susan Walker, Kerri McEgan, Gillian Opie and Catherine McNamara, Mercy Hospital for Women; Susan Donath, Murdoch Children's Research Institute; Christine East, Monash Medical Centre; Lisa Gold, Deakin University

This world first study has found that women with diabetes in a low-risk pregnancy can safely express breast milk in late pregnancy, with the study dispelling concerns that the practice could cause harm to babies.

The DAME study explored the safety and effectiveness of advising women with diabetes in pregnancy to commence expressing breast milk from 36 weeks of pregnancy. We recruited a total of 635 women and randomised them to the study – about half of them were advised to express.

We recruited the women at six sites that provide pregnancy and birth care: The Royal Women's Hospital, Mercy Hospital for Women, Monash Health, Barwon Health, the Women's at Sandringham (part of the Royal Women's Hospital) and Frankston Hospital, from June 2011 until October 2015. We collected data at recruitment in late pregnancy as well as from birth records, and then by telephone interview at two weeks and 12 weeks after birth.

The study found that for women with diabetes in pregnancy who were considered of low obstetric risk, there was no harm in advising them to express breast milk

in late pregnancy. We also found evidence that infants were more likely to receive only breast milk in the first 24 hours after birth.

The findings pave the way for clinicians to recommend that low-risk pregnant women with diabetes in pregnancy express and store breast milk to give to their newborns in the event they develop hypoglycaemia (low blood sugar levels) – a condition that can cause serious health problems in newborns.

The results of our study should not be extrapolated to high-risk groups with diabetes in pregnancy. The study results were published in *The Lancet* in 2017, and clinical guidelines have been developed based on the study outcomes.

A sub-study titled *Exploring mothers' perceptions of their experience of antenatal milk expressing* commenced in early 2017.

FUNDING: NHMRC Project Grant; La Trobe University

STATUS: Ongoing; paper published in *The Lancet*

www.latrobe.edu.au/jlc/research/breastfeeding/dame



DAME trial participants at the launch of *The Lancet* paper



DAME – winner of the Victorian Public Healthcare Award from left: Sue Matthews (CEO, Royal Women's Hospital), Lisa Amir, Anita Moorhead, Della Forster, The Hon Bob Cameron (Bendigo Health)

Research Program

MATERNITY AND NEWBORN EMERGENCIES (MANE) PROGRAM EVALUATION

Della Forster, Helen McLachlan, Michelle Newton, Méabh Cullinane, Stefanie Zugna

The Victorian Department of Health and Human Services has funded the Maternity and Newborn Emergencies (MANE) program, which is auspiced and run by The Royal Women's Hospital Maternity Services Education Program for regional and rural public maternity providers.

To inform the ongoing development of the content, design and delivery of the program, we are conducting an evaluation of MANE over a three-year period from 2017 to 2020. All rural and regional maternity service providers currently receiving MANE have the opportunity to participate, with in-depth case studies conducted at five maternity service sites.

FUNDING: Victorian Department of Health and Human Services

STATUS: Data collection ongoing; protocol paper submitted

OBSTETRIC OUTCOMES FOR IMMIGRANT WOMEN

Rhonda Small, Fetene Belihu, in collaboration with Mary-Ann Davey, Monash University, the Victorian Perinatal Data Collection (VPDC) and Paul Agius, Burnet Institute

This project continued earlier work investigating identified problems of public health importance in relation to obstetric outcomes and experiences of maternity care for immigrant women of non-English speaking backgrounds in Australia. These include a range of unexplained variations by maternal country of birth (e.g. in caesarean section and other obstetric procedures); evidence for higher standardised perinatal mortality ratios among well grown term infants of women born in NES-countries; and consistently poorer ratings of maternity care by immigrant women from NES-countries.

In 2017 Fetene Belihu graduated with a Doctor of Public Health with research using VPDC data to investigate a range of perinatal outcomes for East African born women and their infants, supervised by Rhonda Small and Mary-Ann Davey. Analyses examining mode of birth outcomes for Vietnamese-born women over 23 years were also published in 2018.

FUNDING: None

STATUS: Five papers published

PREVENTING POSTNATAL DEPRESSION IN NEW MOTHERS USING TELEPHONE PEER SUPPORT (DAISY)

Della Forster, Helen McLachlan, Touran Shafiei, Jan Nicholson, Heather Grimes, Jessica Bee, Molly Allan, Catina Adams; in

collaboration with Alan Shiell, School of Psychology and Public Health, La Trobe University; Cindy-Lee Dennis, University of Toronto; Tram Nguyen, The Royal Women's Hospital; Cattram Nguyen, Murdoch Children's Research Institute; Jane Fisher, Monash University; Hume and Wyndham Local Governments and PANDA (Perinatal Anxiety & Depression Australia)

In Australia, 17% of new mothers experience postnatal depression (PND), with serious health consequences for the woman, her infant and family members. However, one in three Victorian new mothers experiencing PND do not seek help. DAISY (*Depression and Anxiety peer Support study*) is a multi-site, two-arm randomised controlled trial (RCT) matching peer volunteer mothers with a lived experience of postnatal depression and/or anxiety (from which they have recovered) with new mothers at increased risk of PND or anxiety.

The aim is to test whether proactive peer support by telephone decreases the risk of PND at six months postpartum. A range of other health outcomes will also be measured, along with exploring the cost-effectiveness of such a service. We will recruit 1,060 women to the study and train about 200 peer volunteer mothers to provide the telephone support.

FUNDING: NHMRC Project Grant

STATUS: Volunteer recruitment and training underway; recruitment of new mothers to begin in 2019

www.latrobe.edu.au/ilc/research/mother-and-infant-health/daisy

COLLABORATIVE WORK

BIRTHPLACE IN AUSTRALIA: A PROSPECTIVE COHORT STUDY

Helen McLachlan, Della Forster; in collaboration with Caroline Homer, Maralyn Foureur, David Sibbritt, University of Technology Sydney; David Ellwood, Griffith University; Jeremy Oats, University of Melbourne; Hannah Dahlen, Western Sydney University

Each year in Australia more than 7,500 babies are born outside conventional labour wards, either in birth centres or at home. However, there is limited evidence on the safety of these alternative settings.

Birthplace in Australia is a prospective cohort study which aims to compare the safety of planned birth at home, in birth centres and in stand-alone midwifery units with standard labour wards in Australia, for women at 'low risk' of complications at labour onset.

FUNDING: NHMRC Project Grant

STATUS: Data collection complete; primary outcome paper submitted for publication

THE CROSS-COUNTRY ULTRASOUND STUDY (CROCUS)

Kristina Edvardsson and Rhonda Small; in collaboration with Ingrid Mogren, Sophia Holmlund and Annika Åhman, Umeå University, Sweden; Hussein Lessio Kidanto and Mathilda Ngarina, Muhimbili National Hospital, Tanzania; Pham Thi Lan, Hanoi Medical University, Vietnam; Joseph Ntaganira and Jean Paul Semasaka Sengoma, University of Rwanda, Rwanda; Tove Fagerli and Elisabeth Darj, Norwegian University of Science and Technology, Norway

The CROss-Country Ultrasound Study (CROCUS) is an international research project exploring midwives' and obstetricians' experiences and views on the use of ultrasound in pregnancy management in low-, middle-, and high-income countries (Rwanda, Tanzania, Vietnam, Australia, Norway and Sweden). The second quantitative phase of CROCUS was completed in 2016–2017 in Norway, Rwanda, Tanzania and Vietnam, and in 2018 in Australia and Sweden.

This work has led to the *Rwandan Ultrasound Health Centre Intervention Study* which has been formally approved and supported by the Minister of Health. This project evaluates the inclusion of ultrasound in standard maternity care at health centre level in terms of pregnancy and delivery outcomes, economics and the experiences of women and health care professionals.

FUNDING: Swedish Research Council for Health, Working Life and Welfare (FORTE); FORTE Marie Curie International Postdoc Fellowship. (Ref. 2013-2699); Swedish Research Council (Ref. 2014-2672)

STATUS: Fourteen publications, two papers submitted

ENHANCING MATERNITY CARE FOR MIGRANTS: RESEARCH TO ACTION (EMMA)

Rhonda Small; in collaboration with Professor Erica Schytt, Helena Lindgren, Ewa Andersson, Malin Arhne, Anna Wahlberg and Amani Eltayb, Karolinska Institute, Sweden; Ulrika Byrskog and Birgitta Essen, Uppsala University, Sweden

This program of work aims to develop and test innovative models of maternity care for migrant women in Sweden in an effort to improve their experiences of antenatal and intrapartum care, their knowledge about childbearing and the health care system, their emotional wellbeing and ultimately, their pregnancy outcomes.

There are four key projects in the program to date. *Study 1* assesses the acceptability and feasibility of group-based antenatal care, supported by childbirth-trained interpreters, for Somali women in Sweden. *Study 2* is a retrospective evaluation of a bilingual doula support program on birth outcomes for 1500 migrant women. *Study 3* is a randomised trial evaluating the effectiveness of community-based doula

support for improving the intrapartum care experiences and postnatal wellbeing of Somali, Eritrean, Arabic and Russian-speaking migrant women giving birth in Stockholm. *Study 4* is a quality improvement co-designed project for enhancing maternity care for migrant women at Södertälje Hospital, south of Stockholm.

FUNDING: Swedish Research Council and Stockholms Läns Landsting

STATUS: All projects have ethics approval, are in different stages of recruitment / implementation; protocol paper for Study 1 submitted



EXPERT – EXPLORING MIDWIVES' AND NURSES' PERCEPTIONS OF 'EXPERTISE'

Touran Shafiei, Michelle Newton, Della Forster; in collaboration with Robyn Matthews, Rebecca Hyde and Fleur Llewelyn, The Royal Women's Hospital

The concept of 'expertise' within the midwifery workforce is traditionally based on number of years that a clinician has been practicing. As the number of years in the workforce increases so does the level of compensation, suggesting a correlation between time spent since qualifying and increased ability/value. Anecdotally, when arranging staffing, managers also view staff in terms of how much of a perceived 'expert' they are. Some staff exhibit a high level of perceived 'expertise', yet receive no formal recognition. What is 'expertise' from a practical point of view if it means more than just the number of years worked? This study aims to develop a functional definition of expertise within the midwifery workforce that can be applied to recruitment, rostering, supporting staff, skill mix and workforce strategies.

FUNDING: Royal Women's Hospital (staff support)

STATUS: Data collection complete, analyses underway

PREGNANCY AND DELIVERY RELATED COMPLICATIONS IN RWANDA: PREVALENCE, ASSOCIATED RISK FACTORS, HEALTH ECONOMIC IMPACT AND MATERNAL EXPERIENCES

Kristina Edvardsson; in collaboration with Jean Paul Semasaka Sengoma, Umeå University, Sweden/University of Rwanda; Ingrid Mogren, Umeå University, Sweden; Gunilla Krantz, University of Gothenburg, Sweden; Cyprien Munyanshngore and Manasse Nzayirambaho, University of Rwanda

Research Program

Rwanda is a low-income country, with maternal mortality estimated to be 201 per 100,000 live births. Since 2014, the *Swedish International Development Cooperation Agency* has been supporting a large research project on maternal health care in Rwanda. This project includes four PhD studies with the common aim of investigating various aspects of Rwanda's antenatal care, delivery and postnatal services. This includes quality and utilisation of antenatal care and delivery services, pregnancy and delivery complications and their impact on health and family circumstances, with analyses of cost effectiveness.

Dr Jean Paul Semasaka Sengoma successfully defended his PhD thesis at Umeå University in November 2018. His research examined the prevalence of pregnancy and delivery-related complications, their associated risk factors and their consequences to the woman and her family.

FUNDING: The Swedish International Development Cooperation Agency

STATUS: Data collection and analyses completed; three papers published, one paper submitted

REGISTER-BASED STUDIES OF BIRTH OUTCOMES AMONG MIGRANT WOMEN IN SWEDEN AND NORWAY

Rhonda Small; in collaboration with Erica Schytt, Sol Juárez, Anders Hjern, Sweden; Vigdis Aasheim, Roy Nilsen, Eline Skirnisdottir Vik, Dag Moster, Svein Rasmussen, Norway

Migrant women constitute a significant minority of women who give birth in the Scandinavian countries, in Sweden and Norway contributing 28% and 27% respectively of the births annually. Up to now, research has focussed on women who have migrated from countries with particularly high risk for adverse outcomes and less is known about other large immigrant groups, including those who have arrived more recently.

The aim of this research is to explore the associations between migration and adverse maternal and infant pregnancy outcomes in immigrant and in Swedish- and Norwegian-born women who gave birth between 1990 and 2016 in Sweden and in Norway. It adds to existing knowledge by including detailed information on migration (paternal origin, length of residence, reasons for migration), using population-based register data from Sweden and Norway.

FUNDING: None

STATUS: Four papers published

REPRODUCTIVE OUTCOMES AND MIGRATION (ROAM): AN INTERNATIONAL COLLABORATION

Rhonda Small, Touran Shafiei

ROAM Steering Group: Birgitta Essen, Uppsala University, Sweden; Rhonda Small, La Trobe University, Australia; Mika Gissler, Institute of Health, Finland; Lisa Merry, McGill University, Canada; Jennifer Zeitlin, INSERM, France, and EURO-PERISTAT; Marcelo Urquia, University of Manitoba, Canada; Sarah Villadsen, University of Copenhagen, Denmark; Sarah Maria Salway, University of Sheffield

This collaboration aims to compare migrant, refugee and asylum-seeking women's reproductive health outcomes and their views of maternity care in Europe, North America and Australia. The collaboration began with an initial grant awarded from the *Canadian Institutes of Health Research (CIHR) International Opportunity Development Grant Scheme*. The first meeting of a collaborative network of researchers from the UK, Italy, France, Belgium, and Finland was held in 2004. Since then collaborators from a range of other countries have joined the network and annual meetings.

ROAM collaborators met in Paris in June 2017 and in Edinburgh in 2018. Completed work was presented and further collaborative research was discussed.

FUNDING: None in 2017/2018

STATUS: Eleven papers published

YOUR VIEWS MATTER: EXPLORING THE EXPERIENCES, SATISFACTION AND NEEDS OF PARENTS OF INFANTS ADMITTED TO NEWBORN SERVICES AT THE ROYAL WOMEN'S HOSPITAL

Della Forster, Helen McLachlan, Touran Shafiei, Anita Moorhead, Rebecca Hyde; in collaboration with Susan Jacobs, Laura Bignell and Silvana Favorito, The Royal Women's Hospital

The Royal Women's Hospital admits more than 1600 babies to Newborn Services per annum. Around 35% of these babies are discharged home, with the remainder being transferred to a lower level special care unit. Families can suffer long-term consequences from their baby's stay in neonatal intensive care which last long after the acute admission period and affect the health of individual family members (particularly mothers), family function, and coping with baby care. We aim to explore the satisfaction, experiences and needs of parents whose babies have been admitted to Newborn Services to inform the way future care is provided; and key clinical outcomes at six months (e.g. maternal mental health and infant feeding).

FUNDING: The Royal Women's Hospital Foundation

STATUS: Data collection complete, analyses underway

Research Program



PLANNED PARENTHOOD AND REPRODUCTIVE RIGHTS

Program Lead: Professor Angela Taft

Planned parenthood confers significant health benefits to women and their families and reproductive rights are human rights. This program of work investigates the prevalence of planned, wanted and unwanted pregnancies and their outcomes.

It also investigates effective contraception options, emergency contraception and methods of pregnancy termination for unwanted pregnancies. We investigate women's attitudes and experiences and aim to improve equity of access and affordability.

In 2018, we were successful in a Monash-led NHMRC Centre of Research Excellence in Sexual and Reproductive Health – SPHERE.

AN EVALUATION OF ACCESS AND EQUITY IN THE PROVISION OF MEDICAL ABORTION FOLLOWING THE INTRODUCTION OF MIFEPRISTONE ON THE AUSTRALIAN PHARMACEUTICAL BENEFITS SCHEME

Angela Taft and Mridula Shankar; in collaboration with Philip Goldstone, Marie Stopes International Australia; Jayne Lucke, Kerry Petersen, La Trobe University; Kirsten Black, University of Sydney; Danielle Mazza and Safeera Hussainy, Monash University

The inclusion of mifepristone, a safe and effective abortifacient, on the Australian PBS in 2013 has provided Australian women with a non-surgical option for early termination. This study provides new data on the proportion of intended and unwanted pregnancies amongst women of reproductive age; preferences for type of termination method; direct and in-direct costs; and the challenges in obtaining an abortion, and key measures of access.

The methods included: an online survey of registered medical abortion providers; computer assisted telephone interview surveys with a random sample of 2013 women aged 18–45; and a self-completed survey of 2326 women from Marie Stopes' clients across Australia.

FUNDING: Transition to Contemporary Parenthood Program, Marie Stopes International Australia, Women's Health Around Victoria

STATUS: Data analysis completed; two papers published

COLLABORATIVE WORK

SPHERE – THE CENTRE OF RESEARCH EXCELLENCE IN SEXUAL AND REPRODUCTIVE HEALTH FOR WOMEN: ACHIEVING BETTER OUTCOMES THROUGH PRIMARY CARE

Angela Taft; in collaboration with Danielle Mazza and Jane Fisher, Monash University; Jayne Lucke, La Trobe University; Kirsten Black and Kevin McGeechan, University of Sydney; Marian Haas, University of Technology, Sydney; Wendy Norman, University of British Columbia

Despite high standards of health care and the existence of a universal health care system in Australia, women continue to have poor sexual and reproductive health, particularly in relation to abortion, contraception, and preconception care.

The aim of SPHERE is to improve the quality, safety, and capacity of primary health care services to achieve better

Research Program

outcomes in women's sexual and reproductive health. Specifically, the SPHERE CRE will:

- research innovative ways of improving the delivery and uptake of medical abortion, contraception, and preconception care
- examine the effectiveness and feasibility of new models of care
- improve effective translation of research outcomes by engaging with health care providers and consumers throughout the research process.

The SPHERE CRE will build capacity in primary health care and women's sexual and reproductive health research by training future research leaders and facilitate collaborations between researchers, healthcare providers, health service delivery organisations, policymakers, peak bodies and consumers.

FUNDING: NHMRC

STATUS: Planning commenced

www.spherecre.org/

ACCESSING CONTRACEPTION FOR EMERGENCY SUPPLY (ACCESS)

Angela Taft; in collaboration with Safeera Hussainy, Danielle Mazza, Kevin McNamara, Ayesha Ghosh and John Jackson, Monash University; Kirsten Black, University of Sydney; Rhonda Clifford and Sajni Gudka, University of Western Australia

Access to emergency contraception is essential as it helps prevent unwanted pregnancies. While the levonorgestrel emergency contraceptive pill has been available over the counter since 2004 through community pharmacies without prescription, there are significant barriers to access.

We are conducting a comprehensive barriers analysis to design pilot studies and ultimately evidence-based interventions to promote increased adherence with pharmacy guidelines and improve access for women.

FUNDING: Monash University, Bayer and Marie Stopes

STATUS: Data collection completed; papers in preparation

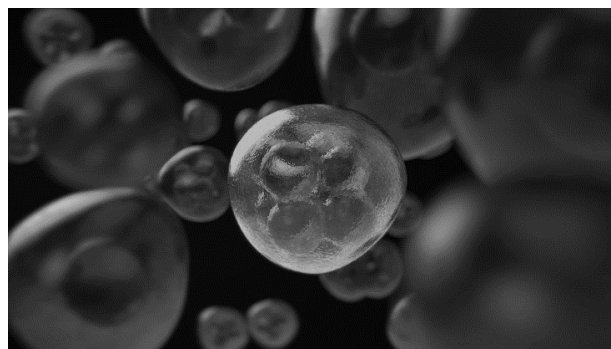
THE AUSTRALIAN CONTRACEPTIVE CHOICE PROJECT (ACCORD)

Angela Taft; in collaboration with Danielle Mazza, Monash University; Kirsten Black and Kevin McGeechan, University of Sydney; Jayne Lucke, La Trobe University; Marion Haas, University of Technology, Sydney; Jeffrey Peipert, Washington University, St Louis

The primary aim of this study is to increase the uptake of Long Acting Reversible Contraceptives (LARCs) amongst Australian women by trialling a complex intervention that involves training GPs to provide "LARC First" structured contraceptive counselling and implementing rapid referral pathways to LARC insertion.

FUNDING: NHMRC Project Grant

STATUS: Data collection complete; protocol paper published, primary outcomes paper submitted and other papers in preparation



Research Program



REDUCING VIOLENCE AGAINST WOMEN AND CHILDREN

Program Lead: Professor Angela Taft

This research program aims to build a body of evidence for effective interventions to prevent and reduce the effects of family and gender-based violence, especially those that can be delivered in primary health care and community settings. We also acknowledge the need to shape responses to the differing effects of family violence on diverse communities, such as migrant and refugee and Aboriginal communities.

In 2017, we celebrated the launch and commencement of the NHMRC CRE for Safer Families, led by the University of Melbourne, for which Angela Taft is a Chief Investigator and Leesa Hooker, Ingrid Wilson and Sonia Reisenhofer are named Early Career Researchers. We also celebrated the successful NHMRC funding of the Harmony Partnership study which commenced in 2018.

Additionally, we were successful in gaining WHO funding to support the ARC DECRA funded Fellowship for Dr Kayli Wild in Timor-Leste, where we have successfully partnered with two Timorese Universities and the community organisation PRADET.

HARMONY – A WHOLE OF GENERAL PRACTICE INTERVENTION WITH BILINGUAL GPs AND DOMESTIC VIOLENCE ADVOCATES TO IMPROVE IDENTIFICATION AND REFERRAL OF WOMEN EXPERIENCING FAMILY VIOLENCE, ESPECIALLY SOUTH ASIAN COMMUNITIES

Angela Taft; in collaboration with Alan Shiell, La Trobe University; Kelsey Hegarty, Douglas Boyle, University of Melbourne; Danielle Mazza, Monash University; Jane Yelland, Cattram Nguyen, Murdoch Children's Research Institute; Gene Feder, Bristol University (UK); Roshan Bhandary, InTouch Multicultural Centre Against Family Violence; and Claudia Garcia-Moreno, the World Health Organization

The Harmony pilot study and now the full Harmony study is a cultural adaptation of a highly successful UK trial (Feder et al, 2006), with the addition of elements from two Australian studies, WEAVE (Hegarty et al, 2013) and MOSAIC (Taft et al, 2009). The primary aim is to test the effectiveness of culturally safe domestic and family violence (DFV) training combined with year-long bilingual caseworker/advocate referral support in increasing the rates of GP identification,

documentation and referrals of women experiencing DFV, especially those of migrant/refugee background. A secondary aim is to evaluate GP systems software developed to anonymously collect aggregated patient data on the identification and referral of DFV incidents.

At the end of a feasibility study, 13 women were successfully referred to *inTouch* (Multicultural Centre Against Family Violence) compared with none from comparison practices. Our application to the NHMRC in partnership with federal and state governments and *inTouch* for a full trial was successful in 2017. We commenced recruiting staff and planning for the full study in 2018.

FUNDING: NHMRC Partnerships Grant with the Commonwealth Department of Social Services and Victorian Department of Premier and Cabinet; Transforming Human Societies and Building Healthy Communities Research Focus Area grants (pilot)

STATUS: Ongoing

Research Program

EMBEDDING A CURRICULUM FOR HEALTH PROVIDERS RESPONDING TO VIOLENCE AGAINST WOMEN AND CHILDREN IN TIMOR-LESTE

Kayli Wild, Angela Taft; in collaboration with Lidia Gomes, Timor-Leste National University; Angelina Fernandes, Cristal Institute, Timor-Leste; Guilhermina de Araujo, Luisa Marcal, PRADET Timor-Leste

We are collaborating with the two main nursing and midwifery training Universities in Timor-Leste to adapt and pilot the World Health Organization's new pre-service curriculum on responding to violence against women and children in low resource health systems. The outcomes from this work will provide a foundation for national systems-level approaches in Timor-Leste and will feed back into WHO's global curriculum.

FUNDING: WHO Geneva, Rotary Global Grant

STATUS: Ongoing



First pilot of the curriculum on responding to violence against women, with midwifery students at Instituto Superior Cristal, Timor-Leste

TACKLING ALCOHOL-RELATED DOMESTIC VIOLENCE

Angela Taft and Ingrid Wilson; in collaboration with Anne-Marie Laslett, Sandra Kuntsche, La Trobe University; Kate Graham, University of Western Ontario

This program brings together the scholarly fields of domestic violence and alcohol to: analyse the complex relationship between alcohol misuse and domestic violence across the life cycle and among diverse family models; assess the effectiveness of current policies, programs and front-line responses to respond to alcohol-related domestic violence; and propose strategies at individual, relationship, family, community and societal levels to prevent and reduce alcohol-related domestic violence.

The study team has been granted access to the *UN Multicultural Study on Men and Violence* for secondary

analysis. With VicHealth funding support, three symposia were presented at international conferences.

FUNDING: LTU Big Bid Program, VicHealth, ARC DECRA (Anne-Marie Laslett)

STATUS: Ongoing; five papers published

TRAINING NEEDS ANALYSIS AND PROFESSIONAL DEVELOPMENT PLAN FOR VICTORIAN MATERNAL AND CHILD HEALTH NURSES

Angela Taft, Leesa Hooker, Lael Ridgway, Jan Nicholson

In 2018, the Victorian Government Department of Education and Training (DET) commissioned JLC to conduct a Maternal and Child Health (MCH) workforce family violence training needs analysis and develop a comprehensive, four-year, professional development plan in consultation with DET and key MCH and project stakeholders.

We conducted an analysis of state-wide routine data, stakeholder interviews and a state-wide survey of nurses to: identify existing MCH nurse family violence knowledge, attitudes, skills and practices; explore MCH nurse family violence training needs and preferences; and examine MCH nurse family violence reporting practices from routine *Key Ages and Stages* (KAS) data on family violence screening, safety planning and referral.

Results were used to develop a Training Needs Analysis Report and a four-year Professional Development plan for future implementation for the Victorian MCH workforce, including focus areas, objectives, learning outcomes, timing and modes of delivery for the training. A complementary four-year evaluation strategy was also outlined.

FUNDING: Victorian Department of Education and Training

STATUS: Project completed; two reports submitted

COLLABORATIVE WORK

CENTRE FOR RESEARCH EXCELLENCE TO PROMOTE SAFER FAMILIES

Angela Taft; in collaboration with Kelsey Hegarty, Cathy Humphreys, Peter Anderson and Lena Sancí, University of Melbourne; Stephanie Brown, Murdoch Children's Research Institute; Gene Feder, Bristol University, UK

The Centre of Research Excellence to promote Safer Families (Safer Families CRE) is the first dedicated Australian Centre to lead research into intimate partner violence. It is a national and international collaboration comprising researchers, families and communities, policy-makers, practitioners, community organisations, and health, family and women's

services. The RECOVER study with Leesa Hooker as a nominated postdoctoral scholar is funded through the CRE.

FUNDING: NHMRC CRE (2017–2022)

STATUS: Studies have commenced; two papers published

I-DECIDE – AN INTERNET-BASED SAFETY DECISION AID FOR WOMEN EXPERIENCING INTIMATE PARTNER VIOLENCE: A RANDOMISED CONTROLLED TRIAL

Angela Taft; in collaboration with Kelsey Hegarty, Cathy Humphreys, Laura Tarzia and Jodie Valpied, University of Melbourne; Nancy Glass, Johns Hopkins University; Elizabeth Murray, University College, London

Evidence for online interventions to help women experiencing intimate partner violence (IPV) is limited. We assessed whether an online interactive healthy relationship tool and safety decision aid (I-DECIDE) would increase women's self-efficacy and improve depressive symptoms compared to an IPV information website.

FUNDING: ARC Discovery grant

STATUS: Project completed, protocol paper published, outcomes paper submitted

RECONNECTING MOTHERS AND CHILDREN AFTER VIOLENCE (RECOVER): THE AUSTRALIAN CHILD–PARENT PSYCHOTHERAPY FEASIBILITY STUDY

Leesa Hooker, Angela Taft; in collaboration with Cathy Humphreys, University of Melbourne; Emma Toone, Berry Street Childhood Institute; Goulburn Valley Health Child & Adolescent Mental Health Services

Child-Parent Psychotherapy (CPP) is an intervention for children aged 0–5 years who have experienced traumatic events such as violence, and are experiencing mental health, attachment, and behavioural problems. Therapeutic sessions with the child and primary caregiver seek to strengthen the caregiver-child relationship as a vehicle for restoring and protecting the child's health, development and wellbeing.

The aim of the RECOVER project is to pilot an Australian adaptation of the US developed Lieberman CPP model of care (Lieberman et al., 2015) for abused Victorian women and their children. This includes recruiting 15 mother-pre-school child dyads, delivery of CPP intervention according to family need (average 20–32 weeks), completing qualitative process evaluation of the feasibility and acceptability of implementing CPP, and the piloting of outcome measures. If effective, findings will inform future trialling and expansion of CPP nationally.

FUNDING: NHMRC, Centre for Research Excellence (CRE) grant and post-doctoral fellowship (LH)

STATUS: Project planning commenced

THE SAFE PREGNANCY STUDY – PROMOTING SAFETY BEHAVIOURS IN ANTENATAL CARE AMONG NORWEGIAN, PAKISTANI AND SOMALI PREGNANT WOMEN

Angela Taft; in collaboration with Lena Henriksen, Mirjam Lukasse, Eva Marie Flaaten, Jeanette Angelshaug, Lisa Garnweidner-Holme, Milada Cvanarova Småstuen, Oslo Metropolitan University; Josef Noll, University of Oslo; Berit Schei, Norwegian University of Science and Technology

The Safe Pregnancy Study is a randomised controlled trial to test the effectiveness of a tablet-based intervention to promote safety behaviours among pregnant women.

Midwives recruit women who attend routine antenatal care. The intervention consists of a screening questionnaire for violence and information about violence and safety behaviours through a short film/movie shown on a tablet. The materials are available in different languages to ensure participation of Norwegian, Urdu, Somali and English-speaking women.

FUNDING: Norwegian Research Council Grant

STATUS: Commenced; protocol paper drafted

WOMEN'S HEALTH AND SAFETY STUDY: FERTILITY, DOMESTIC VIOLENCE AND WOMEN'S EXPERIENCES OF HEALTH SERVICES IN TIMOR-LESTE

Kayli Wild, Angela Taft; in collaboration with Linda Kelly, La Trobe University; Lidia Gomes, Joao Martins, Angelina Fernandes and Guilhermina de Araujo, the National University of Timor-Leste

This study is part of a larger program of research on health responses to violence against women and children in low-resource settings. It documents the stories of women who have experienced domestic and sexual violence in Timor-Leste to better understand the relationship between fertility and violence, how women enhance their own safety and sources of vulnerability and resilience. In-depth audio interviews with women are used to construct audiovisual learning resources to be included in health provider training and to inform the development of models of care which are based on the lived experience and expressed needs of women in Timor-Leste.

FUNDING: ARC DECRA Fellowship (KW)

STATUS: Data collection complete; three films developed and embedded in nursing/midwifery curriculum at two Timorese Universities, further analysis and publication underway

Research Program



TRANSITION TO CONTEMPORARY PARENTHOOD – PREPARATION AND SUPPORT

Program Lead: Professor Jan Nicholson

This program was founded by a 2013 donation from Mrs Roberta Holmes to address the question: *“How do we reach and teach couples of whatever sex or strata in society to parent healthy, happy, resilient children, ultimately able as adults to navigate the challenges which will confront them here and in the globalised world of their future?”*

2018 marked the end of the formal donation funding period. In this time, we established three flagship areas – Families at Work (now a stand-alone own program of work led by Amanda Cooklin), Australian Parents’ Health and Wellbeing, and Enhancing Services and Supports.

Catherine Chamberlain joined us in 2017 and now co-leads the Centre’s Aboriginal and Torres Strait Islander Family Health program.

Over 9500 Australian parents have participated in studies that are creating new understandings of what makes parenthood challenging and how Australian communities, services and organisations can improve the parent experience. We have published more than 110 scientific papers, our academic expertise has been recognised through invitations to present at international symposia and join editorial boards, and our work has reached an audience of 2.5 million via print and broadcast media.

www.latrobe.edu.au/jlc/research/tcpp

CROSS-NATIONAL VALIDATION OF CHILD LANGUAGE DEVELOPMENTAL TRAJECTORIES

Shannon Bennetts; in collaboration with Naomi Hackworth, Parenting Research Centre; Jay Buzhardt, Charles Greenwood, Dale Walker and Fan Jai, Juniper Gardens Children’s Research Project, University of Kansas; Jan Matthews, Parenting Research Centre

In Australia, one quarter of children entering primary school have not achieved the necessary developmental milestones to succeed within the school environment. Identifying which children are at risk of poor developmental outcomes and intervening early is crucial to ensuring that all children have the best opportunity for optimal development and long-term academic achievement.

This study involves the validation of the Early Communication Indicator (ECI) for use in Australia. The ECI is an assessment tool widely used in the US for monitoring the developmental progress of pre-school age children. It harnesses interactive technology to support data-driven child and family

assessment in the field. The study compares developmental trajectories of Australian and US infants and toddlers using data from the Early Home Learning Study and the Early Head Start cohorts and will inform future implementation of the ECI in Australia.

FUNDING: Transforming Human Societies Research Focus Area Visiting Fellowship Grants Scheme

STATUS: Paper under review

EHLS AT SCHOOL: THE SCHOOL-AGE FOLLOW-UP OF THE EARLY HOME LEARNING

Jan Nicholson, Shannon Bennetts, Jasmine Love, Andisheh Vahedi, Lisa Pascoe, Meabh Cullinane, Clair Cullen, Stacey Hokke, Ellen Koutsodimitropoulos, Laura Biggs, Melanie Tassos, Rabia Khan, Melina Piakis; in collaboration with Elizabeth Westrupp, Deakin University; Sheena Reilly, Griffith University; Naomi Hackworth, Parenting Research Centre; Donna Berthelsen, Queensland University of Technology;

Research Program

Fiona Mensah, Penny Levickis, Murdoch Children's Research Institute; Lisa Gold, Ha Le, Deakin University

The original Early Home Learning Study (EHLS) aimed to identify the best ways to support parents experiencing difficult social circumstances to create a rich home learning environment for their young children. It evaluated an early childhood parenting intervention called *smaltalk*.

EHLS was conducted at the Parenting Research Centre, in partnership with and funded by the Victorian Department of Early Education and Childhood Development from 2010–2013.

The EHLS at School Study is now following up these families as children reach 7.5 years, to evaluate long-term outcomes, including: children's school readiness, social-emotional functioning, academic achievement, and parent-child interactions.

FUNDING: Victorian Department of Education and Training and NHMRC

STATUS: Data collection complete; data linkage, coding, cleaning and analyses in progress; protocol paper published, four papers in preparation



EVALUATION OF THE GROWING TOGETHER PARENTING KIT: A MIXED METHODS STUDY

Della Forster, Jan Nicholson, Helen McLachlan, Michelle Newton, Heather Grimes, Fiona McLardie-Hore, Touran Shafiei, Sarah Hay

The Royal Women's Hospital developed an educational kit for pregnant women about early parenting, known as *Growing Together*, with funding from the Victorian State Government. The kit has three components – an information book for parents that covers the journey from conception to one year of age, an App that has been specifically designed for the project, and a children's book that parents are encouraged to read to their infants.

We evaluated the kit using mixed methods, measuring a range of outcomes including parents' views and experiences of the care and information, women's experience of motherhood, attachment, infant development, and parental knowledge and confidence as well as the views and experiences of health professionals.

FUNDING: The Royal Women's Hospital

STATUS: Data collection completed; final report submitted; protocol paper under review, outcomes paper in preparation

MEDIA REPORTING OF 'STRANGER DANGER' AND OTHER FACTORS RELATING TO CHILDREN'S INDEPENDENT MOBILITY

Sharinne Crawford, Shannon Bennetts, Jan Nicholson, Amanda Cooklin; in collaboration with Naomi Hackworth and Julie Green, Parenting Research Centre; Stephen Zubrick, University of Western Australia

Children's independent mobility has important health, social and emotional benefits, however parents commonly act as 'gatekeepers', restricting or encouraging their child's independence. The media may contribute to parents' perception of risk to children and provides a reference point for parents' decision-making around children's independent mobility.

This study evaluates the media climate during a three-month period in 2013 when 1,779 Victorian parents of children aged 9 to 15 years reported on their attitudes towards children's independent mobility via telephone interview. We examined both, print and television reports of the risks and benefits of children's independent mobility over this period and compare the media coverage to parents' ratings of concern about their child's independent mobility.

FUNDING: La Trobe University Social Research Assistance Platform

STATUS: Data collection and analysis completed; one paper in preparation

POVERTY REDUCTION FOR SINGLE MOTHERS: THE ROLE OF CHILD SUPPORT PAYMENTS

Amanda Cooklin, Jan Nicholson; in collaboration with Kay Cook, Sarah Sinclair, RMIT; Huong Dinh, Australian National University

This new collaboration investigates the role of child support payments as one policy measure aimed at poverty reduction for single mothers and their children. Using data from the *The Longitudinal Study of Australian Children* (LSAC) we examined the following research questions:

How robust are child support payments as a poverty reduction intervention for single mothers? Do child support payments promote single mothers' wellbeing, and support

Research Program

optimal parenting behaviours, independently of other related 'protective' socio-demographic and family factors? Does this policy intervention show measurable benefits to children's social, academic and health outcomes, at key ages and stages of children's development?

FUNDING: Building Healthy Communities Research Focus Area

STATUS: In progress; one paper in preparation

RECRUITING, RETAINING AND TRACING RESEARCH PARTICIPANTS VIA SOCIAL MEDIA: FEASIBILITY AND ETHICS

Sharinne Crawford, Stacey Hokke, Jan Nicholson, Shannon Bennetts; in collaboration with Jayne Lucke, Australian Research Centre in Sex, Health and Society; Patrick Keyzer, La Trobe Law School; Lawrie Zion, Department of Communications and Media, La Trobe University; Naomi Hackworth, Parenting Research Centre

The ability to effectively recruit, retain and trace families from diverse backgrounds is one of the greatest challenges to parenting and intervention research, and successful project completion. Traditional approaches to engaging families in research are increasingly ineffective in light of contemporary communication patterns and mobile populations. While social media is a potentially useful recruitment and retention tool, current ethical guidelines in Australia provide little guidance around its use. This project aimed to identify effective and ethical strategies to engage research participants using social media, and to build the scientific evidence base to inform ethical decision-making.

FUNDING: Transforming Human Societies Research Focus Area

STATUS: Data collection and analysis complete; two papers published; one paper under review; research summary complete; one conference presentation and three invited presentations completed; factsheet in preparation



COLLABORATIVE WORK

CHILDREN'S ATTENTION PROJECT: LONGITUDINAL STUDY OF CHILDREN WITH AND WITHOUT ADHD

Jan Nicholson; in collaboration with Emma Sciberras, Tim Silk, Deakin University; Daryl Efron, Vicki Anderson, Murdoch Children's Research Institute, the Royal Children's Hospital and the University of Melbourne; Phillip Hazel, University of Sydney; Obi Ukuommune, University of Exeter, UK; Brad Jongeling, Joondalup Child Development Centre, Perth

Led by Emma Sciberras, the Children's Attention Project is a longitudinal study of a community sample of children with and without Attention Deficit Hyperactivity Disorder, examining the long-term effects on children's behaviour, learning and day-to-day living. It includes an assessment of the influence of parenting and parent wellbeing on outcomes for these children. From 6,000 children screened, 179 children with ADHD, 86 children with subthreshold ADHD and 212 non-ADHD controls participated with their parents at baseline when aged 6–8 years. Data have been collected at 2 follow-up periods to 10–11 years, with a subgroup participating in a nested neuroimaging study.

FUNDING: Two NHMRC Project grants

STATUS: Data collection complete, analyses ongoing; 18 papers published

SMS FOR DADS: MULTI-CENTRE RANDOMISED CONTROLLED TRIAL

Jan Nicholson; in collaboration with Richard Fletcher, Jennifer St George, the University of Newcastle; Jacqui MacDonald, Deakin University

Led by Richard Fletcher, SMS for Dads supports fathers across the transition to parenthood. Using the SMS function on their mobile phones, fathers are automatically sent supportive, educational messages across pregnancy timed according to the baby's due date, and the postpartum. Some are 'in the baby's voice' telling the father about how he/she is developing. Other messages are about father-infant bonding, fathers' support for the mother, and fathers' self-care. The aim is to prevent mental health problems and enhance fathers' relationships with their infant and their partner.

After successful piloting to see if the concept would work and whether fathers would like it, SMS for Dads has been provided to over 2000 fathers across Australia. It is now being formally evaluated in a multi-site randomised controlled trial and a variation has been developed for fathers whose partners have serious mental illness.

Research Program

FUNDING: beyondblue, SA Minister for Health, Defence Health, Carrington Health, Queensland Centre for Perinatal and Infant Mental Health, Children's Health Queensland Hospital and Health Service

STATUS: Ongoing; 1 paper published

'TAKE A BREATH': VIDEOCONFERENCING GROUP INTERVENTION FOR PARENTS OF CHILDREN WITH LIFE-THREATENING ILLNESS AND INJURY

Jan Nicholson; in collaboration with Vicki Anderson, Frank Muscara, Meredith Rayner, Maria McCarthy, Murdoch Children's Research Institute and the Royal Children's Hospital; Kylie Burke, University of Queensland; Robyn Walser, University of California, Berkeley

Parents of a child diagnosed with a life-threatening illness or injury often experience debilitating stress and anxiety. When this persists, it is associated with a range of difficulties for both parent and child. Building on findings from a longitudinal study of parents of these children, the Take A Breath program seeks to prevent or reduce parent traumatic symptoms. Using a videoconferencing format, parents take part in a brief group intervention, from the comfort of their home.

FUNDING: Royal Children's Hospital Foundation

STATUS: Data collection complete, analyses ongoing; six papers published

TEN-YEAR FOLLOW-UP OF THE MATERNAL HEALTH STUDY

Jan Nicholson; in collaboration with Stephanie Brown, Kelsey Hegarty, Deirdre Gartland, Hannah Woolhouse, Rebecca Giallo, Fiona Mensah, Harriet Hiscock, Murdoch Children's Research Institute and the University of Melbourne

Led by Stephanie Brown, the Maternal Health Study is a multi-wave, prospective cohort study investigating the health and well-being of over 1500 first-time mothers and firstborn children. The study has provided a comprehensive picture of women's health with repeated data collected on common maternal health problems, including depression, anxiety and intimate partner abuse. The ten-year follow-up expanded the study to include direct assessment of health and developmental outcomes of the firstborn children at age 10 years.

FUNDING: NHMRC Project grants, Australian Rotary Health Fund grant

STATUS: Data collection complete, analyses ongoing

SPECIAL VISIT BY ROBERTA HOLMES

In May 2018, JLC hosted an afternoon tea for Mrs Roberta Holmes whose generous donation to La Trobe founded the *Transition to Contemporary Parenthood Program – Preparation and Support* (TCPP). The visit was an opportunity to show off our new accommodation to a valued member of the broader JLC community.

Afternoon tea was followed by a series of presentations on the achievements of TCPP since its inception 5 years ago. Professor Jan Nicholson provided an overview of TCPP and its growth in terms of both the projects and people it supports.

Dr Amanda Cooklin talked about the Families and Work research program, highlighting partnerships with industry and peak bodies and how the research is influencing public discourse. Dr Catherine Chamberlain introduced the Healing the Past Project funded by the NHMRC and Lowitja Institute to support Indigenous parents who have experienced complex trauma, and Professor Della Forster discussed DAISY, a new NHMRC-funded trial evaluating the impact of telephone peer support for preventing postnatal depression and anxiety in new mothers.

Mr Stephen May, Senior Director, Alumni and Advancement, closed the afternoon by thanking Mrs Holmes for her support and noting how her donation has provided a foundation for an ongoing program of research that is improving the health and wellbeing of Australian parents and their children.



Mrs Roberta Holmes

Research Program



WORK AND FAMILY

Program Lead: Dr Amanda Cooklin

This program builds the evidence about employment as a critical social determinant of health for parents, and in partnership with industry and organisations, applies this evidence to scope, design and implement workplace-based interventions to support parents' wellbeing, their parenting and children's development. Our published research has shown that parents' job quality, work conditions and work-family conflict are powerful determinants of health, which, if addressed, can improve the health and wellbeing of parents and their children.

The program comprises three main activities: analyses of national, longitudinal cohort data to build the evidence base; a national survey of >5000 employed parents to identify the links between use of formal or informal flexible work arrangements and well-being; and our work with Australian employer organisations to inform intervention design, mode of delivery and content.

Highlights of 2017–2018 included: nomination of a *Social Science and Medicine* paper (Westrupp et al., 2016) for the *International Kanter Award for Excellence in Work and Family Research*; two pieces of commissioned research investigating employee wellbeing and uptake of family-friendly work arrangements; invited presentations to State Government of Victoria (WorkSafe; October 2017) and the launch of the 'Aussie Dads: Advancing Equality in Parental Leave' (November 2018).

In August 2018, we also co-convoked a national forum with Dr Liana Leach (The ANU) 'Why Fathers Care Matters'.

FAMILIES AT WORK: AN ONLINE SURVEY OF EMPLOYED AUSTRALIAN PARENTS

Amanda Cooklin, Stacey Hokke, Shannon Bennetts, Jan Nicholson, Sharinne Crawford, Simon Mason; in collaboration with Liana Leach and Lyndall Strazdins, Australian National University; Naomi Hackworth, Parenting Research Centre; Cattram Nguyen, Murdoch Children's Research Institute

This prospective study of employed Australian parents addressed the questions: What formal and informal flexible work arrangements are parents using to manage work-family demands? Are there differences for mothers and fathers, or by children's age? Which supports and strategies are associated with low work-family conflict, high work-family enrichment, reduced perceived discrimination and overall mental health?

The method used to collect data (via Facebook advertising) was systematically evaluated as a methodological sub-study.

FUNDING: Transforming Human Societies Research Focus Area

STATUS: Data collection completed; one paper accepted, further papers in preparation

UPWARDS SUPPORT FOR MANAGERS AT WORK: THE ROLE OF GENDER AND PARENT-STATUS

Amanda Cooklin; in collaboration with Nina Junker, Goethe University, Frankfurt; Wendy Nilsen, Oslo Met University, Eun Ae Cho, Nanyang Technological University, Singapore

This project investigates whether stereotypes about 'working mothers' influence the support managers receive from their staff in the workplace. Based on gender role theory, we

Research Program

hypothesize that asking for support may serve as a penalty for mothers but not for men and fathers in supervisory roles.

The study is a collaboration between researchers in Germany, Singapore, Norway and Australia, with data collected in each setting to yield cross-national comparisons.

FUNDING: None

STATUS: Initiated late 2018

WORK FAMILY BALANCE, PARENTING AND FAMILY WELLBEING

Amanda Cooklin, Jan Nicholson; in collaboration with Cattram Nguyen and Rebecca Giallo, Murdoch Children's Research Centre; Liana Leach, Lyndall Strazdins and Huong Dinh, Australian National University; Angela Martin, University of Tasmania

This program of work uses national, longitudinal (2004–present) cohort data from over 5,000 employed parents and their children (Longitudinal Study of Australian Children) to identify the adverse effects of poor-quality jobs and work-family conflict on parents and children. Recent analyses have found, that for mothers and fathers both, entering into work-family conflict is associated with a corresponding decrease in their mental health, parenting behaviours and couple relationship; with flow on effects to children's mental health across early–mid childhood.

In 2017, we were nominated for a *Kanter Award for Excellence in Work and Family Research (International)*. We have continued to publish and present widely on this topic including convening symposia at the International Federation for Psychiatric Epidemiology (2017) and Australian Institute for Family Studies Conference (2018).

FUNDING: Transition to Contemporary Parenthood Program

STATUS: Ongoing; five papers published

WORKING OUT WORK AT LA TROBE / YOUR WELLBEING AT WORK

Amanda Cooklin; in collaboration with Linda Robertson, Zemeel Saba, Human Resources at La Trobe University

The Judith Lumley Centre was commissioned by the Executive Director of Human Resources at La Trobe to undertake this work. These projects aimed to generate evidence about the uptake of 'family-friendly' work arrangements at La Trobe (parental leave, flexible work etc); and to identify the links between work conditions and staff wellbeing at La Trobe. Findings from these surveys have informed the development of a range of policies, strategies and toolkits at La Trobe to support working parents and all staff.

FUNDING: Human Resources, La Trobe University

STATUS: Completed in 2018; two interim and two final reports submitted



Vale Judith Lumley

VALE PROFESSOR EMERITA JUDITH LUMLEY AM

15 February 1941 – 25 October 2018

In October 2018 our Foundation Director, Professor Emerita Judith Lumley AM, died. She left an indelible legacy as a world-acclaimed epidemiologist whose ground-breaking research improved health outcomes for pregnant women and their children.

Judith created a Centre that combined intellectual rigor in addressing important health issues, with an expectation that we provide nurturing support to each other and to the next generation of researchers. She was an inspirational teacher and mentor. We are proud to continue her work and to have the legacy of her research and social values guiding us.



Judith was born in Wales and emigrated to Australia in 1965 with her botanist husband Peter. Following medical studies started at Cambridge University and completed at Monash University, Judith undertook her PhD in fetal physiology in the Department of Obstetrics and Gynaecology at Monash University. While her three sons were small, Judith worked part time in teaching and research at Monash and was editor of the *Australian Family Physician* for many years.

Reflecting her commitment to the importance of accurate and reliable routine data, Judith established and directed the *Victorian Perinatal Data Collection Unit* in the Department of Health in 1982. It was the first of its kind in Australia and to this day, continues to collect high quality data on all births in Victoria. In 1988 she chaired the *Victorian Ministerial Review of Birthing Services*, conducting the first ever Australian survey of women's views about their maternity care.

In 1991 Judith turned her attention to research and launched the *Centre for the Study of Mothers' and Children's Health* with program grant funding from the Victorian Health Promotion Foundation. The Centre was later called *Mother and Child Health Research* and was renamed *The Judith Lumley Centre* in 2013. In 1994 and 1995, Judith headed the prestigious *National Perinatal Epidemiology Unit* at Oxford University, returning to the Centre in 1996 where she remained Director until her retirement in 2008.

Research legacy

Judith's research on the aetiology of preterm birth is world renowned, as is her work reviewing the evidence for interventions to reduce smoking in pregnancy. Her work has changed the way that health professionals view and interact with women in their care, and through her work, and that of her colleagues and students, numerous improvements have been made in perinatal health care. Many of the Centre's current staff trained with Judith and continue her legacy through applied research that seeks to improve the health of mothers and their children. Judith was a longstanding advocate for evidence-based clinical and public health policy and practice and was involved in the establishment of the Cochrane Collaboration.

Service roles

Judith's national and international service contributions were many. She served on the Advisory Board for *The Lancet* for many years, was an advisor to the *Canadian Perinatal Surveillance System* (1995–2008) and contributed tirelessly to the work of the National Health and Medical Research Council – reviewing grants and fellowships and sitting on numerous committees. From 2000 to 2008 Judith co-edited the *Australian and New Zealand Journal of Public Health* (with Associate Professor Jeanne Daly), bringing a strong focus on the appropriate use of the right methodology as essential for generating quality evidence.

Awards

Judith was awarded life membership of the Public Health Association of Australia in 1994 and in 2002 was presented with the Association's Sidney Sax Medal for "*more than two decades of work dedicated to the promotion of public health and for her efforts in improving maternal care in Australia*". She was a Fellow of the UK and Australian Faculties of Public Health Medicine. In 2006, Judith was made an honorary Member of the Order of Australia "*for service to promoting public health and improving maternity care in Australia*".

Tributes

Those who knew Judith describe her as "*an extraordinary, most unassuming, brilliant woman*", an "*encouraging, wise, patient woman and one of the most respected perinatal epidemiologists in the world*". Her students describe their time with her as a nurturing and maturing experience. [*The Lancet's* published obituary](#) gives further insight into Judith's life and work. You can also find tributes given on the occasion of Judith's retirement in the [MCHR News #30, Dec 2008](#).

"Judith has been my inspiration (Can I do as well as Judith can?), my conscience (Am I being as rigorous as Judith would be?), my advisor (What did/would Judith say about that?), and my friend. Once you work with Judith, you are a better person."

Prof Jane Halliday, Murdoch Children's Research Institute

STAFF



JLC staff and students in December 2018

The Centre brings together a team of researchers with qualifications and experience in: epidemiology, women's health, education, social research, public health, biomedical research, criminology, statistics, pharmacy, medicine, nursing and midwifery.

DIRECTOR



Professor **Jan Nicholson** – Centre Director and Inaugural Roberta Holmes Professorial Chair, Transition to Contemporary Parenthood Program

SENIOR RESEARCHERS



Associate Professor **Lisa Amir** – Principal Research Fellow; also, Medical Officer, Breastfeeding Service, Royal Women's Hospital and GP in private practice



Associate Professor **Catherine Chamberlain** – NHMRC Career Development Fellow



Professor of Midwifery and Maternity Services Research **Della Forster** – joint appointment at La Trobe University and the Royal Women's Hospital



Dr **Naomi Hackworth** – Senior Research Fellow, Transition to Contemporary Parenthood Program (until July 2017)



Professor of Midwifery (Women's and Infants Health) **Susan McDonald** – joint appointment at La Trobe University and the Mercy Hospital for Women



Professor **Helen McLachlan** – Judith Lumley Centre and School of Nursing and Midwifery, La Trobe University



Professor **Angela Taft** – Principal Research Fellow specialising in intimate partner and gender-based violence and planned parenthood and reproductive rights

Staff

RESEARCHERS



Ms **Molly Allen** – Research Assistant



Ms **Stephanie Amir** - Research Officer



Dr **Shannon Bennetts** – Research Fellow,
Transition to Contemporary Parenthood
Program



Dr **Laura Biggs** – Research Officer, PANDA
Project, EHLS at School



Dr **Yvonne Clark** – Research Fellow, Healing
the Past by Nurturing the Future Project



Dr **Amanda Cooklin** – Senior Research Fellow,
Transition to Contemporary Parenthood
Program



Dr **Sharinne Crawford** – Postdoctoral
Research Fellow, Transition to Contemporary
Parenthood Program



Dr **Clair Bennett (nee Cullen)** – Research
Assistant, Transition to Contemporary
Parenthood Program



Dr **Méabh Cullinane** – Research Fellow,
MANE evaluation



Dr **Kristina Edvardsson** – Post-Doctoral
Research Fellow



Dr **Maggie Flood** – Research Fellow



Ms **Anna Fragkoudi** – Research Assistant



Dr **Stacey Hokke** – Research Officer,
Transition to Contemporary Parenthood
Program



Dr **Leesa Hooker** - Postdoctoral Research
Fellow



Dr **Helene Johns** – Research Fellow

Ms **Ellen Koutsodimitropoulos** – Research
Assistant



Ms **Jasmine Love** – Research Assistant,
Transition to Contemporary Parenthood
Program



Ms **Pam McCalman** – Research Officer



Mr **Simon Mason** – Research Officer



Ms **Fiona McLardie-Hore** – Project Coordinator, RUBY, Baggarrook project



Ms **Anita Moorhead** – Project Coordinator, DAME trial



Dr **Michelle Newton** – Researcher



Ms **Lisa Pascoe** – Research Assistant, Transition to Contemporary Parenthood Program (until September 2018)



Dr **Naomi Ralph** – Research Fellow, Healing the Past by Nurturing the Future Project



Dr **Sonia Reisenhofer** – Researcher



Dr **Touran Shafiei** – Research Fellow



Dr **Elizabeth Westrupp** – Research Fellow, Transition to Contemporary Parenthood Program (until November 2017)



Dr **Kayli Wild** – Research Fellow



Ms **Andisheh Vahedi** – Research Officer



Dr **Ann Wilson** – Research Fellow, Study Coordinator, Harmony Study



Dr **Ingrid Wilson** – Postdoctoral Research Fellow, La Trobe Violence Against Women Research Network (LAVAWN)

HONORARY STAFF

Dr **Clare Barnett** – ZEG Berlin – Berlin Center for Epidemiology and Health Research

Dr **Mary-Ann Davey** – Department of Obstetrics and Gynaecology, Monash University

Dr **Naomi Hackworth** – Parenting Research Centre

Dr **Ingrid Mogren** – Department of Clinical Sciences, Obstetrics and Gynecology, Umea University

Dr **Catram Nguyen** – Murdoch Children's Research Institute

Dr **Marcos Signorelli** – Department of Public Health, Federal University of Parana (UFPR), Brazil

Professor Emerita **Rhonda Small** – Independent Consultant

Dr **Susan Tawia** – Australian Breastfeeding Association

Dr **Elizabeth Westrupp** – Deakin University

ADMINISTRATIVE STAFF

Zoe Marchant – Administration Officer

Simone Pakin – Administration Officer

Emma Sayers – Administration Officer, HARMONY project

Leanne Slade – Administration Officer, Healing the Past project

Olga Tsironis – Administration Officer, TCPP (until June 2017)

Postgraduate Study

POSTGRADUATE STUDY



Kristina Edvardsson, Leesa Hooker, Angela Taft, Ingrid Wilson, Sonia Reisenhofer, Lyn Watson

Higher degree candidates at the Judith Lumley Centre come from a wide range of backgrounds – including midwifery, nursing, medicine, pharmacy, social science and public health – to work on projects related to infant and family health.

Postgraduate coordinators: Touran Shafiei and Amanda Cooklin

PHD GRADUATES 2017

Fetene Belihu Berhanu. *Perinatal and obstetric health outcomes of Eastern African immigrant women in Victoria, Australia: a population-based study.* Supervised by Rhonda Small and Mary-Ann Davey

Miranda Buck. *Nipple pain in early motherhood.* Supervised by Lisa Amir and Karalyn McDonald (Monash University)

Sonia Reisenhofer. *Understanding abused women's needs, identifying their goals and using the "Stages of Change" to enhance health professionals' care for women experiencing intimate partner violence.* Supervised by Angela Taft, Mary-Ann Davey, Lyn Watson and Kelsey Hegarty (University of Melbourne)

Ingrid Wilson. *Fearing the "changed" man: Women's experience of alcohol-related intimate partner violence. A constructivist grounded theory study.* Supervised by Angela Taft, Rhonda Small and Kathryn Graham (Centre for Addiction and Mental Health, Ontario, Canada)

PHD GRADUATES 2018

Laura Biggs. *An exploration of the PANDA – Perinatal Anxiety & Depression Australia National Helpline.* Supervised by Helen McLachlan, Della Forster, Touran Shafiei and Pranee Liamputtong (Western Sydney University)

Margaret Flood. *Examining postpartum haemorrhage: Risk factors, data quality and reporting.* Supervised by Mary-Ann Davey (Monash University), Sue McDonald and Wendy Pollock (Maternal Critical Care)



Maggie Flood with supervisors Mary-Ann Davey and Wendy Pollock

Moni Rani Saha. *Breastfeeding practices and experiences of women requiring medicines during lactation.* Supervised by Lisa Amir and Kath Ryan (School of Pharmacy, University of Reading, UK)



Moni Rani Saha with supervisor Lisa Amir

Laura Whitburn. *The experience of labour pain.* Supervised by Sue McDonald, Mary-Ann Davey (Monash University) and Lester Jones

POSTGRADUATE STUDENTS

ABLE: Asking women aBout disabiliTiEs

Charlie Smithson, supervised by Helen McLachlan, Della Forster and Michelle Newton

Clinical reasoning: Adopting and adapting a simple tool for capturing the complexities of pain

Lester Jones, supervised by Lisa Amir and Stephen Kent (School of Psychology and Public Health)

Developing and testing an online moderated peer support intervention to prevent postnatal depression

Sara Couch, supervised by Helen McLachlan, Della Forster and Touran Shafiei

Diabetes and Antenatal Milk Expressing (DAME): A randomised controlled trial

Anita Moorhead, supervised by Della Forster, Lisa Amir and Sharinne Crawford

Evaluating a new Parenting Kit designed by the Royal Women's Hospital: A mixed methods study

Sarah Hay, supervised by Helen McLachlan, Michelle Newton, Della Forster and Touran Shafiei

Evaluation of area-based initiatives to improve outcomes in children from disadvantaged families

Fiona Burgemeister, supervised by Jan Nicholson, Sharinne Crawford and Naomi Hackworth (Parenting Research Centre)

Evaluation of the impact of the Maternity and Newborn Emergencies (MANE) education program on safety culture in health organisations

Stefanie Zugna, supervised by Helen McLachlan, Della Forster and Méabh Cullinane

Examining the postnatal depression and anxiety screening and management practices of MCH nurses in Victoria: A mixed methods study

Noushin Arefadib, supervised by Touran Shafiei, Amanda Cooklin and Jan Nicholson

EXPerT – Exploring nurses' and midwives' perceptions of 'expertise' at the Royal Women's Hospital

Robyn Matthews, supervised by Della Forster, Michelle Newton, Touran Shafiei and Fleur Llewellyn (The Royal Women's Hospital)

Exploring hospital practices immediately after birth in Saudi Arabia: A mixed method study

Nawal Abdulghani, supervised by Lisa Amir, Kristina Edvardsson and Della Forster

Exploring the introduction, expansion and sustainability of caseload midwifery: A national cross sectional study

Kate Dawson, supervised by Della Forster, Michelle Newton and Helen McLachlan

Exploring ways to increase breastfeeding rates for Aboriginal and Torres Strait Islander Women in Victoria, Australia

Jessica Bee, supervised by Della Forster, Helen McLachlan and Touran Shafiei

How does the Enhanced Maternal and Child Health Service in Victoria support vulnerable families, in particular those experiencing family violence?

Catina Adams, supervised by Angela Taft and Leesa Hooker

Many Safe Hands: How to provide trauma-informed, culturally appropriate care for Aboriginal and Torres Strait Islander parents with complex trauma in the perinatal space

Georgina Igoe, supervised by Catherine Chamberlain and Naomi Ralph

Mixed methods study of post abortion women and service providers in Ghana

Mercy Otsin, supervised by Angela Taft, Leesa Hooker and Kirsten Black (Sydney University)

Observational study of satisfaction with professional consultations in gynaecology: Associations with health literacy

Christine Murray, supervised by Susan McDonald and Richard Gray (School of Nursing and Midwifery)

Optimal method to express, store and transport breast milk from home to hospital in two settings: A developed and a developing country

Ranmali Rodrigo, supervised by Lisa Amir and Della Forster

Pass it on: Implementing a breastfeeding peer support program

Heather Grimes, supervised by Della Forster, Helen McLachlan and Touran Shafiei

Reproductive health decision-making in Municipio Viqueque, Baucau, Dili and Ermera, Timor-Leste

Heather Julie Wallace, supervised by Angela Taft, Susan McDonald and Suzanne Belton (Charles Darwin University)

RUBY – Ringing up about breastfeeding early: A randomised controlled trial

Fiona McLardie-Hore, supervised by Della Forster, Helen McLachlan and Touran Shafiei

SILC – Supporting infant feeding in local communities: Evaluation of SILC processes

Rhian Cramer, supervised by Helen McLachlan, Della Forster and Touran Shafiei

Postgraduate Study

Victorian Maternal and Child Health Service provision: What, when and how?

Lael Ridgway, supervised by Jan Nicholson, Lisa McKenna (School of Nursing and Midwifery) and Naomi Hackworth (Parenting Research Centre)

Violence against women, maternal mortality and severe maternal morbidity

Beatriz Paulina Ayala Quintanilla, supervised by Angela Taft, Susan McDonald and Wendy Pollock (Maternal Critical Care) (submitted 2018)

Volunteer doula support for women experiencing socioeconomic disadvantage in Melbourne: A realist evaluation

Kerryn O'Rourke, supervised by Touran Shafiei, Michelle Newton and Jane Yelland (Murdoch Children's Research Institute)

What are the views and experiences of Aboriginal and Torres Strait Islander women having a baby in Victoria?

Pamela McCalman, supervised by Helen McLachlan, Della Forster and Michelle Newton

Your views matter – Exploring families experience of care in the Newborn Intensive Care

Rebecca Hyde, supervised by Della Forster, Helen McLachlan, Touran Shafiei and Sue Jacobs (The Royal Women's Hospital)



Anita Moorhead working on her PhD

JUDITH LUMLEY SCHOLARSHIP

The College of Science, Health and Engineering established the Judith Lumley Scholarship in recognition of the contributions Judith Lumley, founding director of Centre for the Study of Mothers' and Children's Health and a world-renowned researcher in maternal health, made to the College and the community more broadly.

The Judith Lumley Scholarship is an esteem award for a high achieving HDR scholarship holder at the Judith Lumley Centre. There is only one holder of the Judith Lumley Scholarship at any time.



Della Forster, Helen McLachlan, Charlie Smithson and Jan Nicholson

In May 2017, **Charlie Smithson** was awarded the Judith Lumley scholarship by Prof Jan Nicholson. Her PhD project is titled "*ABLE: Asking women aBout disabiliTies*" and is investigating the prevalence, identification and experiences of women with disabilities that use maternity services at the Royal Women's hospital.

Charlie is supervised by Prof Helen McLachlan, Prof Della Forster, and Dr Michelle Newton.

Lectures & Presentations

SIGNIFICANT LECTURES AND PRESENTATIONS

The dissemination of research findings to consumers, clinicians and policy-makers is an important objective at the Judith Lumley Centre. Our staff and students delivered presentations and lectures to a variety of national and international audiences in 2017 and 2018, many as invited speakers.



The launch of the DAME paper was celebrated by the researchers and many interested people at the Royal Women's Hospital on 2 June 2017

Amir L. *Breast infections in breastfeeding women – case presentations.* 2017 Victorian Branch Conference, Ballarat, February 2017

Amir L. *Lactation and medications: a multidisciplinary approach to making hard decisions.* International Lactation Consultants Association, Toronto, Canada, July 2017

Amir L. *“Can I breastfeed without being pregnant?” Induced lactation: case studies and discussion.* Mercy Hospital for Women, Grand Round, Heidelberg, August 2017

Amir L. *Poverty and Breastfeeding.* Breastfeeding Conference, Infant feeding: in whose interest? Melbourne, October 2017

Amir L. *Hot Topics in Breastfeeding 2018* (5 talks). Madrid and Barcelona, Spain, March 2018

Amir L. *2nd Surabaya Breastfeeding Symposium* (4 talks). Indonesian Pediatric Society, East Java Branch in collaboration with Breastfeeding Taskforce, Surabaya, Indonesia, November 2018

Bennetts S.K. *Mothers’ experiences of parent-reported and direct observational assessments: How can we decrease discomfort and increase validity?* International Association for the Study of Child Language (IASCL), Lyon, France, July 2017

Cooklin A, Leach L, Hokke S. *Reducing the organisational and individual impacts of work-family conflict: Moving from evidence to practice.* Invited group presentation at WorkSafe Roundtable Research Forum: Integrated approaches to improve worker health and wellbeing: research challenges and future opportunities, Melbourne, October 2017

Cooklin A, Leach L. *National Forum Why Fathers Care Matters: Enabling Gender Equity in Work and Care.* The Australian National University, Canberra, August 2018

Chamberlain C, Gee G, Brown S, Atkinson J, Arabena K, Gartland D, Herrman H, Glover H, Clark Y, Atkinson C, Mitchell A, Mensah F, McLachlan H, Andrews S, Hirvonen T, Brennan S. *Healing the Past by Nurturing the Future: A scoping review.* UCL Social Science Research Unit. London, UK, May 2017

Chamberlain C, O’Mara-Eves A, Porter J, Coleman T, Perlen S, Thomas J, McKenzie J. *Interventions for supporting women to stop smoking in pregnancy: addressing context, challenges and opportunities during the evolution of a large Cochrane Review over 30 years.* UK Centre for Tobacco Control, UK, May 2017; Stirling University, Stirling, Scotland, June 2017

Chamberlain C. *Healing the Past by Nurturing the Future: Addressing Intergenerational Trauma During the Perinatal Period.* Plenary presentation for College of Aboriginal and Torres Strait Islander Nurses and Midwives conference, Adelaide, September 2018

Chamberlain C. *Healing the Past by Nurturing the Future: Addressing Intergenerational Trauma During the Perinatal Period. A Fair go Right from the Start: Achieving Equity in Pregnancy and Early Childhood Outcomes.* PSANZ forum, SAHMRI, Adelaide, November 2017

Strobel N, **Chamberlain C, McCalman J, Marriott R, McAullay D, Edmond K.** *Engaging Australian Aboriginal and Torres Strait Islander communities and stakeholders in evidence synthesis.* 6th Annual NHMRC Symposium on Research Translation co-hosted with the Lowitja Institute, Brisbane, November 2017

Chamberlain C. *Healing the Past by Nurturing the Future: Addressing Intergenerational Trauma During the Perinatal Period.* First 1000 days workshop, Caboolture, March 2018



Lisa Amir, other international speakers and the conferencing organising committee at the 2nd Surabaya Breastfeeding Symposium in Nov. 2018

Chamberlain C, Gee G, Harfield S, Campbell S, Brennan S, Clarke Y, Mensah F, Glover K, Arabena K, Herrman H, Nicholson J and S Brown for the Healing the Past by Nurturing the Future project group. *Healing the past by nurturing the future - Complex childhood trauma in the perinatal period:*

Lectures & Presentations

scoping review and evidence map. Short oral presentation, World Psychiatric Association conference, Melbourne, February 2018

Chamberlain C, Gee G, Brown S for the Healing the Past by Nurturing the Future Group. *Healing the past by nurturing the future: Developing perinatal screening and support for Indigenous parents who have experienced complex trauma*. International Childhood Trauma Conference, Melbourne Convention Centre, July / August 2018

Chamberlain C, Perlen S, Brennan C, Rychetnik L, Thomas D, Maddox R, Alam N, Banks E, Wilson A, Eades S. *Towards a comprehensive approach to Aboriginal and Torres Strait Islander tobacco control (CATs): An overview of reviews*. Oceania Tobacco conference, Hobart, October 2017.

Crawford S. *Parental fear as a barrier to children's independent mobility and resultant physical activity*. Maroondah City Council, Whitehorse City Council & Manningham City Council, Eastern Region Active Travel Forum, Melbourne, May 2018

Crawford S. *"It's not black and white": The ethics of recruiting, retaining and tracing research participants online*. Invited speaker. Australasian Ethics Network Conference, Townsville, September 2018

Flood M. *Examining postpartum haemorrhage in the women of Victoria: Risk factors, data quality and reporting*. Seminar, Karolinska Institute, Stockholm, Sweden, October 2018

Flood M. *Primary postpartum haemorrhage and breastfeeding for confinements in 2009–13 in Australia: a population-based study*. Seminar, Umeå University, Umeå, Sweden, October 2018

Flood M. *Examining postpartum haemorrhage in the women of Victoria: risk factors, data quality and reporting*. Seminar, Umeå University, Umeå, Sweden, October 2018

Hokke S, **Bennetts SK**, Hackworth NJ, Leach L, Strazdins L, Nguyen C, **Crawford S**, **Nicholson J**, **Cooklin A**. *The relationship between flexible work-family strategies and parents' mental health and occupational wellbeing in Australia*. Gender, Work and Organisation 10th Biennial International Interdisciplinary Conference, Sydney, June 2018

Hooker L, Samaraweera N, Agius P, **Taft A**. *Intimate partner violence and early motherhood: Predictors of a poor motherhood experience and implications for health care practice*. National Conference on Health and Domestic Violence – Futures without Violence. San Francisco, California, USA, September 2017

Hooker L. *Domestic violence identification and support: The role of primary care providers. Lessons from the MOVE trial and future directions* (key note address). Call of the Mockingbird: Responding to maternal health concerns in the

perinatal period. One-day conference, Western Sydney University, Sydney, NSW, February 2018

Hooker L, Toone E, **Taft A**, Humphreys, C. *Reconnecting mothers and children after violence (RECOVER): The Australian Child-Parent Psychotherapy Pilot. Preliminary Findings*. 22nd Nursing Network on Violence against Women International, Niagara-on-the-Lake, Canada, September 2018; International Conference on Domestic Violence and Health, Melbourne, November 2018

Moorhead A. *Diabetes and Antenatal Milk Expressing*. International Lactation Consultants Association Conference, Toronto, Canada, July 2017

Moorhead A. *Diabetes and Antenatal Milk Expressing*. New Zealand Lactation Consultants Association Walking Tour Conferences, Auckland / Wellington / Christchurch, New Zealand, February 2018

Moorhead A. *Diabetes and Antenatal Milk Expressing*. The Academy of Breastfeeding Medicine (ABM) 7th European Regional Meeting, Rotterdam, The Netherlands, May 2018

Moorhead A. *Diabetes and Antenatal Milk Expressing*. Health-e-learning international webinar, June 2018

Moorhead A. *Diabetes and Antenatal Milk Expressing*. iLactation online breastfeeding conference, July 2018

Nicholson, JM. *Shaped by Our Parents? The impact of family and social challenges on children*. Invited speaker, Menzies Health Institute Queensland, Griffith University Gold Coast, April 2017

Nicholson, JM. *Shaped by Our Parents? The impact of family and social challenges on children*. Invited speaker, Olga Tennison Autism Research Centre, La Trobe University, October 2017

Shafiei T, **Forster DA**, **Nicholson J**, **McLachlan HL**, **Newton M**, **Grimes H**, ... **Hay S**. *Exploring the impact of a parenting information kit on maternal emotional wellbeing and health-seeking behaviour: A cluster randomised controlled trial*. 7th World Congress on Women's Mental Health, Dublin, March 2017



Midwives stand against violence at the Timor-Leste Midwives Association Conference 2017

Lectures & Presentations

Shafiei T, Forster D, McLachlan H, Small R, Biggs L.

Characteristics of callers to PANDA Perinatal Anxiety & Depression Australia National Helpline and their health assessment, history and risk factors. Australian College of Midwives Conference, Perth, October 2018

Small R. *Giving birth in a new country: Migrant women's experiences.* Invited speaker. International Women's Day at the Karolinska Institute Midwifery Program, Stockholm, Sweden, March 2018

Taft A, Shankar M, Hegarty K, Small R and Feder G. *Intersectionality in health care practice: Harmony - partnering bilingual advocates and bilingual primary care clinicians to support migrant and refugee women experiencing domestic/family violence (pilot study).* Futures Without Violence Conference, San Francisco, USA, September 2017

Taft A. *MOSAIC to MOVE: Cluster intervention trials to reduce intimate partner violence among pregnant and postpartum women in primary health care.* Karolinska Institute, September 2017

Taft A. *Plenary panel.* International Conference on Domestic Violence and Health, Melbourne, November 2018

Taft A, Hegarty K, Mazza D, Shiell A, Feder G. *Harmony – scaling up a primary care systems model partnering bilingual advocates and bilingual primary care clinicians to better support migrant and refugee women experiencing domestic/family violence.* Nursing Network on Violence Against Women International, Niagara on the Lake, Canada, September 2018

Taft A, Shankar M, Lucke J, Mazza D, Goldstone P, Black K, Petersen K, Hussainy S. *Unintended and unwanted pregnancy and their outcomes amongst reproductive age women in Australia: A national random CATI study.* IUSTI Asia Pacific Sexual Health Congress 2018, Auckland, New Zealand, November 2018

Wild K, Fernandes A. *Women's experiences of domestic and sexual violence: Shaping healthcare responses in Timor-Leste.* Women in Asia Conference, Perth, September 2017

Wild K, de Araujo G, Matos L, Gomes L, Fernandes A, Madeira I, McDonald S, Taft A. *Security from below: The socio-cultural context of responding to violence against women in Timor-Leste.* Timor-Leste Studies Association Conference, Dili, June 2017

Wilson I. *Living with a violent drinker: A qualitative study of women's relationship trajectory (poster). The complex relationship between men's use of alcohol and other drugs and their violence toward female partners: Implications for healthcare responses (symposium).* 8th Biennial National Conference on Health and Domestic Violence, San Francisco, USA, September 2017

INTERNATIONAL CONFEDERATION OF MIDWIVES 31ST TRIENNIAL CONGRESS, TORONTO, CANADA 2017



JLC staff and students attending the International Confederation of Midwives Congress, Toronto

This congress was attended by more than 4,000 midwives, partners, stakeholders in midwifery and civil society organisations. Presentations were given by Laura Biggs, Kate Dawson, Della Forster, Fiona McLardie-Hore, Touran Shafiei and Heather Wallace, and poster presentations by Laura Biggs, Sarah Hay and Helen McLachlan. Della Forster, Helen McLachlan, Michelle Newton and Kate Dawson also co-facilitated a very popular workshop, titled *Why is scaling up and sustaining effective programs and models of care so hard? – a workshop on how Implementation Science can help improve on care quality and safety* led by Jane Sandall together with James Harris (both from King's College London).

FATHERS FORUM. WHY FATHERS' CARE MATTERS: ENABLING GENDER EQUITY IN CARE AND WORK

In August 2018, Amanda Cooklin, Jan Nicholson and Stacey Hokke co-convoked, with Dr Liana Leach (ANU), a national forum focussed on fathers, parenting, work and care. The goal of this forum was to share our knowledge of why fathers' care matters and what barriers prevent fathers from successfully combining work with care.



Amanda Cooklin (left) with participants at the Fathers Forum

Awards

AWARDS

Della Forster, Anita Moorhead, Lisa Amir and the DAME team: *Victorian Public Healthcare Award for "Improving health care through clinical research"* for the research project Diabetes and Antenatal Milk Expressing (DAME), October 2017

Angela Taft: *Excellence in Policy and Practice Award*, Nursing Network on Violence Against Women International Conference, Ontario, Canada, September 2018

Beatriz Pauline Ayala Quintanilla: *Dr Doris Campbell Memorial Student Travel Award* 2018

Heather Wallace: Nurses Board of Victoria Legacy Limited '*Marjory Taylor Fellowship*'. Melbourne, May 2017



Heather Wallace, Angela Taft, Lisa McKenna at the presentation of the Marjory Taylor Fellowship Award

Maggie Flood: *New Investigator's Award for the Midwifery category (poster)* and *PSANZ President's New Investigator's Award for best poster (all categories)* for the poster: *Primary postpartum haemorrhage and breastfeeding for confinements 2009-13 in Victoria*. 22nd Perinatal Society of Australia and New Zealand (PSANZ) Annual Congress, Auckland, March 2018

Co-authors: Mary-Ann Davey, Sue McDonald, Wendy Pollock and Fiona Cullinane

Robyn Matthews (and team): Peer voted award for best poster *Perceptions of 'Expertise' as part of The EXPert Study: Exploring nurses' and midwives' perceptions of 'expertise' and what it is like to work at The Women's*. The Royal Women's Hospital International Nurses and Midwives Day celebration, May 2018

Pamela McCalman: *Norman Beischer Foundation Ernest Williams Scholarship* to support Pam's research which is enabling the development of improved ways of caring for Aboriginal and Torres Strait Islander women in mainstream maternity services. July 2018



Angela Taft and other award recipients at the Nursing Network on Violence Against Women International Conference 2018

PROMOTIONS

Catherine Chamberlain to Associate Professor (2018)

Amanda Cooklin to Senior Research Fellow (2017)

Shannon Bennetts to Research Fellow (2018)

Sharinne Crawford to Research Fellow (2018)



Anne Beischer, member of the Norman Beischer Medical Research Foundation Board of Directors, with Elizabeth Beischer, Pam McCalman, Della Forster

PUBLICATIONS



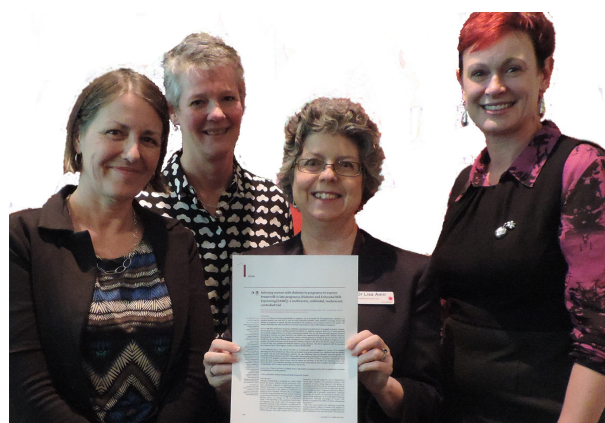
ARTICLES IN REFEREED JOURNALS 2017

1. **Amir LH.** Recognising and managing mastitis. *Medicine Today* 2017; 18(12):53-6
2. Andersson E, **Small R.** Fathers' satisfaction with two different models of antenatal care in Sweden – Findings from a quasi-experimental study. *Midwifery* 2017; 50:201-7
3. **Belihu FB, Small R, Davey M-A.** Episiotomy and severe perineal trauma among Eastern African immigrant women giving birth in public maternity care: A population based study in Victoria, Australia. *Women Birth* 2017; 30(4):282-90
4. **Belihu FB, Small R, Davey M-A.** Trial of labour and vaginal birth after previous caesarean section: A population based study of Eastern African immigrants in Victoria, Australia. *Midwifery* 2017; 46:8-16
5. **Belihu FB, Small R, Davey M-A.** Variations in first-time caesarean birth between Eastern African immigrants and Australian-born women in public care: A population-based investigation in Victoria. *Aust N Z J Obstet Gynaecol* 2017; 57(3):294-301
6. **Bennetts SK, Mensah FK, Green J, Hackworth NJ, Westrupp EM, Reilly S.** Mothers' experiences of parent-reported and video-recorded observational assessments. *J Child Fam Stud* 2017; 26(12):3312-26
7. **Bennetts SK, Mensah FK, Westrupp EM, Hackworth NJ, Nicholson JM, Reilly S.** Establishing agreement between parent-reported and directly measured behaviours. *Australasian Journal of Early Childhood* 2017; 42(1):105-15
8. Bhide S, Sciberras E, Anderson V, Hazell P, **Nicholson JM.** Association between parenting style and social outcomes in children with and without attention-deficit / hyperactivity disorder: an 18-month longitudinal study. *J Dev Behav Pediatr* 2017; 38(6):369-77
9. Blandthorn J, James K, Bowman E, Bonomo Y, **Amir LH.** Two case studies illustrating a shared decision-making approach to illicit methamphetamine use and breastfeeding. *Breastfeed Med* 2017; 12(6):381-5
10. Campbell S, Roux N, Preece C, Rafter E, Davis B, Mein J, Boyle J, Fredericks B, **Chamberlain C.** Paths to improving care of Australian Aboriginal and Torres Strait Islander women following gestational diabetes. *Prim Health Care Res Dev* 2017; 18(6):549-62
11. **Chamberlain C,** O'Mara-Eves A, Porter J, Coleman T, Perlen SM, Thomas J, McKenzie JE. Psychosocial interventions for supporting women to stop smoking in pregnancy. *Cochrane Database Syst Rev* 2017; 2, CD001055
12. **Chamberlain C,** Perlen S, Brennan S, Rychetnik L, Thomas D, Maddox R, Alam N, Banks E, Wilson A, Eades S. Evidence for a comprehensive approach to Aboriginal tobacco control to maintain the decline in smoking: an overview of reviews among Indigenous peoples. *Syst Rev* 2017; 6:135
13. **Chamberlain CR,** Wilson AN, Amir LH, O'Dea K, Campbell S, Leonard D, Ritte R, Mulcahy M, Eades S, Wolfe R. Low rates of predominant breastfeeding in hospital after gestational diabetes, particularly among Indigenous women in Australia. *Aust N Z J Public Health* 2017; 41(2):144-50
14. **Cooklin AR,** Joss N, Husser E, Oldenburg B. Integrated approaches to occupational health and safety: A systematic review. *Am J Health Promot* 2017; 31(5):401-12
15. **Cramer RL, McLachlan HL, Shafiei T, Amir LH, Cullinane M, Small R, Forster DA.** Implementation and evaluation of community-based drop-in centres for breastfeeding support in Victoria, Australia. *Int Breastfeed J* 2017; 12:46
16. **Crawford SB, Bennetts SK, Hackworth NJ,** Green J, Graesser H, **Cooklin AR,** Matthews J, Strazdins L, Zubrick SR, D'Esposito F, **Nicholson JM.** Worries, 'weirdos', neighborhoods and knowing people: a qualitative study with children and parents regarding children's independent mobility. *Health Place* 2017; 45:131-9
17. Crombie N, **Hooker L, Reisenhofer S.** Nurse and midwifery education and intimate partner violence: A scoping review. *J Clin Nurs* 2017; 26(15-16):2100-25

Publications

18. Cyril S, **Nicholson JM**, Agho K, Polonsky M, Renzaho AM. Barriers and facilitators to childhood obesity prevention among culturally and linguistically diverse (CALD) communities in Victoria, Australia. *Aust N Z J Public Health* 2017; 41(3):287-93
19. de Jersey SJ, Mallan K, Callaway L, Daniels LA, **Nicholson JM**. A cross sectional comparison of predisposing, reinforcing and enabling factors for lifestyle health behaviours and weight gain in healthy and overweight pregnant women. *Matern Child Health J* 2017; 21(3):626-35
20. de Jersey SJ, Mallan KM, Callaway LK, Daniels LA, **Nicholson JM**. Prospective relationships between health cognitions and excess gestational weight gain in a cohort of healthy and overweight pregnant women. *J Acad Nutr Diet* 2017; 117(8):1198-209
21. Derks IP, Tiemeier H, Sijbrands EJ, **Nicholson JM**, Voortman T, Verhulst FC, Jaddoe VW, Jansen PW. Testing the direction of effects between child body composition and restrictive feeding practices: results from a population-based cohort. *Am J Clin Nutr* 2017; 106(3):783-90
22. Dinh H, **Cooklin AR**, Leach LS, **Westrupp EM**, **Nicholson JM**, Strazdins L. Parents' transitions into and out of work-family conflict and children's mental health: Longitudinal influence via family functioning. *Soc Sci Med* 2017; 194:42-50
23. Fletcher R, May C, Kay Lambkin F, Gemmill AW, Cann W, **Nicholson JM**, Rawlinson C, Milgrom J, Hight N, Foureur M, Bennett E, Skinner G. SMS4dads: Providing information and support to new fathers through mobile phones – a pilot study. *Advances in Mental Health* 2017; 15(2):121-31
24. **Flood MM**, **McDonald SJ**, Pollock WE, **Davey M-A**. Data accuracy in the Victorian Perinatal Data Collection: Results of a validation study of 2011 data. *Health Inf Manag* 2017; 46(3):113-26
25. **Forster DA**, **Moorhead AM**, Jacobs SE, Davis PG, Walker SP, McEgan KM, Opie GF, Donath SM, Gold L, McNamara C, Aylward A, East C, Ford R, **Amir LH**. Advising women with diabetes in pregnancy to express breastmilk in late pregnancy (Diabetes and Antenatal Milk Expressing [DAME]): a multicentre, unblinded, randomised controlled trial. *Lancet* 2017; 389(10085):2204-13
26. Gilmartin CE, **Amir LH**, Ter M, Grzeskowiak LE. Using domperidone to increase breast milk supply: a clinical practice survey of Australian neonatal units. *Journal of Pharmacy Practice and Research* 2017; 47(6):426-30

27. Graham K, **Wilson I**, **Taft A**. The broader context of preventing alcohol-related intimate partner violence. *Drug Alcohol Rev* 2017; 36(1):10-2
28. Graham S, O'Connor CC, Morgan S, **Chamberlain C**, Hocking J. Prevalence of HIV among Aboriginal and Torres Strait Islander Australians: a systematic review and meta-analysis. *Sex Health* 2017; 14(3):201-7



Della Forster, Anita Moorhead, Lisa Amir and Jan Nicholson
with newly published Lancet article

29. **Hackworth NJ**, Berthelsen D, Matthews J, **Westrupp EM**, Cann W, Ukoumunne OC, **Bennetts SK**, Phan T, Scicluna A, Trajanovska M, Yu M, **Nicholson JM**. Impact of a brief group intervention to enhance parenting and the home learning environment for children aged 6–36 months: a cluster randomised controlled trial. *Prev Sci* 2017; 18(3):337-49
30. Halliday JL, Muggli E, Lewis S, Elliott EJ, Amor DJ, O'Leary C, Donath S, **Forster D**, Nagle C, Craig JM, Anderson PJ. Alcohol consumption in a general antenatal population and child neurodevelopment at 2 years. *J Epidemiol Community Health* 2017; 71(10):990-8
31. Hill B, Bergmeier H, McPhee S, Fuller-Tyszkiewicz M, Teede H, **Forster D**, Spiliotis BE, Hills AP, Skouteris H. Is parity a risk factor for excessive weight gain during pregnancy and postpartum weight retention? A systematic review and meta-analysis. *Obes Rev* 2017; 18(7):755-64
32. Holmlund S, Ntaganira J, **Edvardsson K**, Lan PT, Semasaka Sengoma JP, Åhman A, **Small R**, Mogren I. Improved maternity care if midwives learn to perform ultrasound: a qualitative study of Rwandan midwives' experiences and views of obstetric ultrasound. *Glob Health Action* 2017; 10:1350451
33. Johnston J, **Reisenhofer S**. Supporting enrolled nurses transiting to university. *Aust Nurs Midwifery J* 2017; 25(1):33

34. Joss N, Dupre-Husser E, **Cooklin A**, Oldenburg B. The emergence of integrated approaches to worker health, safety and wellbeing in Australia. *Aust J Prim Health* 2017; 23(2):154-61
35. Juárez SP, **Small R**, Hjern A, Schytt E. Caesarean birth is associated with both maternal and paternal origin in immigrants in Sweden: a population-based study. *Paediatr Perinat Epidemiol* 2017; 31(6):509-21
36. King T, McKean C, Rush R, **Westrupp E**, Mensah F, Reilly S, Law J. Acquisition of maternal education and its relation to single word reading in middle childhood: an analysis of the Millennium Cohort Study. *Merrill Palmer Quarterly* 2017; 63(2):181-209
37. Lies J, Lau ST, **Jones LE**, Jensen MP, Tan G. Predictors and moderators of post-traumatic stress disorder: an investigation of anxiety sensitivity and resilience in individuals with chronic pain. *Ann Acad Med Singapore* 2017; 46:102-10
38. Mallan KM, Daniels LA, **Nicholson JM**. Obesogenic eating behaviors mediate the relationships between psychological problems and BMI in children. *Obesity* 2017; 25(5):928-34
39. McCalman J, Heyeres M, Campbell S, Bainbridge R, **Chamberlain C**, Strobel N, Ruben A. Family-centred interventions by primary healthcare services for Indigenous early childhood wellbeing in Australia, Canada, New Zealand and the United States: a systematic scoping review. *BMC Pregnancy Childbirth* 2017; 17:71
40. **McLachlan HL**, **Shafiei T**, **Forster DA**. Breastfeeding initiation for Aboriginal and Torres Strait Islander women in Victoria: analysis of routinely collected population-based data. *Women Birth* 2017; 30(5):361-6
41. Middlemiss W, Stevens H, Ridgway L, **McDonald S**, Koussa M. Response-based sleep intervention: Helping infants sleep without making them cry. *Early Hum Dev* 2017; 108:49-57
42. Muggli E, Matthews H, Penington A, Claes P, O'Leary C, **Forster D**, Donath S, Anderson PJ, Lewis S, Nagle C, Craig JM, White SM, Elliott EJ, Halliday J. Association between prenatal alcohol exposure and craniofacial shape of children at 12 months of age. *JAMA Pediatr* 2017; 171(8):771-80
43. Muscara F, McCarthy MC, Thompson EJ, Heaney C-M, Hearps SJC, Rayner M, Burke K, **Nicholson JM**, Anderson VA. Psychosocial, demographic, and illness-related factors associated with acute traumatic stress responses in parents of children with a serious illness or injury. *J Trauma Stress* 2017; 30(3):237-44
44. **Prendergast LE**, Leung RK, Toumbourou JW, **Taft A**, McMorris BJ, Catalano RF. Sexual behaviour in early adolescence: A cross-national comparison of Australian and United States youth. *Aust J Psychol* 2017; 69(1):3-11
45. Robson SJ, Vally H, Mohamed A-L, Yu M, **Westrupp EM**. Perinatal and social factors predicting caesarean birth in a 2004 Australian birth cohort. *Women Birth* 2017; 30(6):506-10
46. Sciberras E, Lucas N, Efron D, Gold L, Hiscock H, **Nicholson JM**. Health care costs associated with parent-reported ADHD: A longitudinal Australian population-based study. *J Atten Disord* 2017; 21(13):1063-72
47. Semasaka Sengoma JP, Krantz G, Nzayirambaho M, Munyanshongore C, **Edvardsson K**, Mogren I. Prevalence of pregnancy-related complications and course of labour of surviving women who gave birth in selected health facilities in Rwanda: a health facility-based, cross-sectional study. *BMJ Open* 2017; 7:e015015
48. **Shankar M**, Black KI, Goldstone P, Hussainy S, Mazza D, Petersen K, Lucke J, **Taft A**. Access, equity and costs of induced abortion services in Australia: a cross-sectional study. *Aust N Z J Public Health* 2017; 41(3):309-14
49. Stanger JJ, Horey D, **Hooker L**, Jenkins MJ, Custovic E. Fetal movement measurement and technology: A narrative review. *IEEE Access* 2017; 5:16747-56
50. Strobel NA, Arabena K, East CE, Schultz EM, Kelahe M, Edmond KM, Eades SJ, **Chamberlain C**. Care co-ordination interventions to improve outcomes during pregnancy and early childhood (up to 5 years). *Cochrane Database Syst Rev* 2017; 8, CD012761
51. Taylor JE, **McDonald SJ**, Earnest A, Buttery J, Fusinato B, Hovenden S, Wallace A, Tan K. A quality improvement initiative to reduce central line infection in neonates using checklists. *Eur J Pediatr* 2017; 176(5):639-46
52. Thompson EJ, Anderson VA, Hearps SJC, McCarthy MC, Mihalopoulos C, **Nicholson JM**, Rayner M, Muscara F. Posttraumatic stress symptom severity and health service utilization in trauma-exposed parents. *Health Psychol* 2017; 36(8):779-86
53. **Whitburn LY**, **Jones LE**, **Davey M-A**, **Small R**. The meaning of labour pain: how the social environment and other contextual factors shape women's experiences. *BMC Pregnancy Childbirth* 2017; 17:157
54. Williams KE, Berthelsen D, Viviani M, **Nicholson JM**. Participation of Australian Aboriginal and Torres Strait Islander families in a parent support programme: longitudinal associations between playgroup attendance and child, parent and community outcomes. *Child Care Health Dev* 2017; 43(3):441-50

Publications

55. Williams KE, Berthelsen D, Walker S, **Nicholson JM**. A developmental cascade model of behavioral sleep problems and emotional and attentional self-regulation across early childhood. *Behav Sleep Med* 2017; 15(1):1-21
56. **Wilson IM**, Graham K, **Taft A**. Living the cycle of drinking and violence: A qualitative study of women's experience of alcohol-related intimate partner violence. *Drug Alcohol Rev* 2017; 36(1):115-24

ARTICLES IN REFEREED JOURNALS 2018

1. **Abdulghani N**, **Edvardsson K**, **Amir LH**. Worldwide prevalence of mother-infant skin-to-skin contact after vaginal birth: A systematic review. *PLoS One* 2018; 13:e0205696
2. Agius PA, **Davey M-A**, **Small R**. Risk of unplanned caesarean birth in Vietnamese-born women in Victoria, Australia: A cross-sectional study. *Women Birth* 2018; 31(6):496-504
3. Åhman A, **Edvardsson K**, Lesio Kidanto H, Ngarina M, **Small R**, Mogren I. 'Without ultrasound you can't reach the best decision' – Midwives' experiences and views of the role of ultrasound in maternity care in Dar Es Salaam, Tanzania. *Sex Reprod Healthc* 2018; 15:28-34
4. **Ayala Quintanilla BP**, Pollock WE, **McDonald SJ**, **Taft AJ**. Impact of violence against women on severe acute maternal morbidity in the intensive care unit, including neonatal outcomes: a case-control study protocol in a tertiary healthcare facility in Lima, Peru. *BMJ Open* 2018; 8:e020147
5. Bauleni EM, **Hooker L**, Vally HP, **Taft A**. Intimate-partner violence and reproductive decision-making by women attending Victorian Maternal- and Child-Health services: a cross-sectional study. *Aust J Prim Health* 2018; 24(5):422-7
6. **Bennetts SK**, **Cooklin AR**, **Crawford S**, D'Esposito F, **Hackworth NJ**, Green J, Matthews J, Strazdins L, Zubrick SR, **Nicholson JM**. What influences parents' fear about children's independent mobility? Evidence from a state-wide survey of Australian parents. *Am J Health Promot* 2018; 32(3):667-76
7. Connor S, **Edvardsson K**, Spelten E. Male adolescents' role in pregnancy prevention and unintended pregnancy in rural Victoria: health care professional's and educators' perspectives. *BMC Pregnancy Childbirth* 2018; 18:245
8. **Cooklin AR**, **Amir LH**, Nguyen CD, **Buck ML**, **Cullinane M**, Fisher JRW, Donath SM, the CASTLE Study Team. Physical health, breastfeeding problems and maternal mood in the early postpartum: a prospective cohort study. *Arch Womens Ment Health* 2018; 21(3):365-74
9. Daly LM, Gardener G, Bowring V, Burton W, Chadha Y, Ellwood D, Frøen F, Gordon A, Heazell A, Mahomed K, **McDonald S**, Norman JE, Oats J, Flenady V. Care of pregnant women with decreased fetal movements: Update of a clinical practice guideline for Australia and New Zealand. *Aust N Z J Obstet Gynaecol* 2018; 58(4):463-8
10. **Dawson K**, **Forster DA**, **McLachlan HL**, **Newton MS**. Operationalising caseload midwifery in the Australian public maternity system: Findings from a national cross-sectional survey of maternity managers. *Women Birth* 2018; 31(3):194-201
11. **Dawson K**, **Newton M**, **Forster D**, **McLachlan H**. Comparing caseload and non-caseload midwives' burnout levels and professional attitudes: A national, cross-sectional survey of Australian midwives working in the public maternity system. *Midwifery* 2018; 63:60-7
12. **Edvardsson K**, Åhman A, Fagerli TA, Darj E, Holmlund S, **Small R**, Mogren I. Norwegian obstetricians' experiences of the use of ultrasound in pregnancy management. A qualitative study. *Sex Reprod Healthc* 2018; 15:69-76
13. **Edvardsson K**, Axmon A, Powell R, **Davey M-A**. Male-biased sex ratios in Australian migrant populations: a population-based study of 1 191 250 births 1999-2015. *Int J Epidemiol* 2018; 47(6):2025-37
14. Fagerli TA, Mogren I, Adolfsson A, **Edvardsson K**, Åhman A, Holmlund S, Darj E, Eggebø TM. Midwives' and obstetricians' views on appropriate obstetric sonography in Norway. *Sex Reprod Healthc* 2018; 16:1-5
15. **Flood M**, Pollock W, **McDonald SJ**, **Davey MA**. Accuracy of postpartum haemorrhage data in the 2011 Victorian Perinatal Data Collection: Results of a validation study. *Aust N Z J Obstet Gynaecol* 2018; 58(2):210-6
16. **Flood MM**, Pollock WE, **McDonald SJ**, **Davey M-A**. Monitoring postpartum haemorrhage in Australia: Opportunities to improve reporting. *Women Birth* 2018; 31(2):89-95
17. Genc S, Smith RE, Malpas CB, Anderson V, **Nicholson JM**, Efron D, Sciberras E, Seal ML, Silk TJ. Development of white matter fibre density and morphology over childhood: A longitudinal fixel-based analysis. *NeuroImage* 2018; 183:666-76

18. Giallo R, Gartland D, Woolhouse H, Mensah F, **Westrupp E**, **Nicholson J**, Brown S. Emotional-behavioral resilience among children of first-time mothers with and without depression across the early childhood period. *Intern J Behavioral Development* 2018; 42(2):214-24
19. Grzeskowiak LE, **Amir LH**, Smithers LG. Longer-term breastfeeding outcomes associated with domperidone use for lactation differs according to maternal weight. *Eur J Clin Pharmacol* 2018; 74(8):1071-5
20. Grzeskowiak LE, Leggett C, Costi L, Roberts CT, **Amir LH**. Impact of Serotonin Reuptake Inhibitor use on breast milk supply in mothers of preterm infants: a retrospective cohort study. *Br J Clin Pharmacol* 2018; 84(6):1373-9
21. Grzeskowiak LE, Smithers LG, **Amir LH**, Grivell RM. Domperidone for increasing breast milk volume in mothers expressing breast milk for their preterm infants: a systematic review and meta-analysis. *BJOG* 2018; 125(11):1371-8
22. **Hackworth NJ**, Matthews J, **Westrupp EM**, Nguyen C, Phan T, Scicluna A, Cann W, Bethelsen D, **Bennetts SK**, **Nicholson JM**. What influences parental engagement in early intervention? Parent, program and community predictors of enrolment, retention and involvement. *Prev Sci* 2018; 19(7):880-93
23. Halliday JL, Muller C, Charles T, Norris F, Kennedy J, Lewis S, Meiser B, Donath S, Stark Z, McGillivray G, Menezes M, Smith SK, **Forster D**, Walker S, Pertile M, Amor DJ. Offering pregnant women different levels of genetic information from prenatal chromosome microarray: a prospective study. *Eur J Hum Genet* 2018; 26(4):485-94
24. Hayes N, Berthelsen DC, **Nicholson JM**, Walker S. Trajectories of parental involvement in home learning activities across the early years: associations with socio-demographic characteristics and children's learning outcomes. *Early Child Development and Care* 2018; 188(10):1405-18
25. **Hokke S**, **Hackworth NJ**, Quin N, **Bennetts SK**, Win HY, **Nicholson JM**, Zion L, Lucke J, Keyzer P, **Crawford SB**. Ethical issues in using the internet to engage participants in family and child research: A scoping review. *PLoS One* 2018; 13:e0204572
26. Holliday S, Hayes C, **Jones L**, Gordon J, Harris N, Nicholas M. Prescribing wellness: comprehensive pain management outside specialist services. *Australian Prescriber* 2018; 41:86-91
27. Holmlund S, Ntaganira J, **Edvardsson K**, Lan PT, Semasaka Sengoma JP, Lesio Kidanto H, Ngarina M, **Small R**, Mogren I. Health professionals' experiences and views on obstetric ultrasound in Rwanda: A cross-sectional study. *PLoS One* 2018; 13(12):e0208387
28. Jansen E, Williams KE, Mallan KM, **Nicholson JM**, Daniels LA. Bidirectional associations between mothers' feeding practices and child eating behaviours. *Int J Behav Nutr Phys Act* 2018; 15:3
29. Juárez SP, Hjern A, **Small R**, Schytt E. Length of residence and caesarean section in migrant women in Sweden: a population-based study. *Eur J Public Health* 2018; 28(6):1073-9
30. Law J, Rush R, King T, **Westrupp E**, Reilly S. Early home activities and oral language skills in middle childhood: a quantile analysis. *Child Dev* 2018; 89(1):295-309
31. Lee A, Muggli E, Halliday J, Lewis S, Gasparini E, **Forster D**. What do pregnant women eat, and are they meeting the recommended dietary requirements for pregnancy? *Midwifery* 2018; 67:70-6
32. Mandal SK, **Hooker L**, Vally H, **Taft A**. Partner violence and postnatal mental health: cross-sectional analysis of factors associated with depression and anxiety in new mothers. *Aust J Prim Health* 2018; 24(5):434-40
33. Mogren I, Lindqvist M, Petersson K, Nilsen C, **Small R**, Granasen G, **Edvardsson K**. Maternal height and risk of caesarean section in singleton births in Sweden - A population-based study using data from the Swedish Pregnancy Register 2011 to 2016. *PLoS One* 2018; 13:e0198124
34. Muggli E, Curd H, Nagle C, **Forster D**, Halliday J. Engaging pregnant women in observational research: a qualitative exploratory study. *BMC Pregnancy Childbirth* 2018; 18:334
35. Mulraney M, **Schilpzand EJ**, Anderson V, **Nicholson JM**, Efron D, Hazell P, Sciberras E. Correlates of anxiety in 6- to 8-year-old children with ADHD: a community-based study. *J Atten Disord* 2018; 22(5):425-34
36. Muscara F, McCarthy MC, Hearps SJC, **Nicholson JM**, Burke K, Dimovski A, Darling S, Rayner M, Anderson VA. Trajectories of posttraumatic stress symptoms in parents of children with a serious childhood illness or injury. *J Pediatr Psychol* 2018; 43(10):1072-82
37. Nguyen C, **Cooklin A**, Strazdins L, **Nicholson J**. Impact of missing data strategies in studies of parental employment and health: Missing items, missing waves, and missing mothers. *Soc Sci Med* 2018; 209:160-8

Publications

38. Nilsen RM, Vik ES, Rasmussen SA, **Small R**, Moster D, Schytt E, Aasheim V. Preeclampsia by maternal reasons for immigration: a population-based study. *BMC Pregnancy Childbirth* 2018; 18(1):423
39. Pascoe L, Aziz Rahman M, **Edvardsson K**, Jokwiro Y, McDonald E, Lood Q, Edvardsson D, Li X. Psychometric evaluation of the English version 14-item resilience scale (RS) in an Australian outpatient population of men with prostate cancer. *Eur J Oncol Nurs* 2018; 35:73-8
40. Reilly S, Cini E, Gold L, Goldfeld S, Law J, Levickis P, Mensah F, Morgan A, **Nicholson JM**, Le HND, Pezic A, Tomblin B, Wake M, Wardrop L. Data resource profile: The Child LAnguage REpository (CLARE). *Int J Epidemiol* 2018; 47(3):688–688j
41. **Rodrigo R**, **Amir LH**, **Forster DA**. Review of guidelines on expression, storage and transport of breast milk for infants in hospital, to guide formulation of such recommendations in Sri Lanka. *BMC Pediatr* 2018; 18:271
42. Scarf VL, Rossiter C, Vedam S, Dahlen HG, Ellwood D, **Forster D**, Foureur MJ, **McLachlan H**, Oats J, Sibbritt D, Thornton C, Homer CSE. Maternal and perinatal outcomes by planned place of birth among women with low-risk pregnancies in high-income countries: A systematic review and meta-analysis. *Midwifery* 2018; 62:240-55
43. Schilpzand EJ, Sciberras E, Alisic E, Efron D, Hazell P, Jongeling B, Anderson V, **Nicholson JM**. Trauma exposure in children with and without ADHD: prevalence and functional impairment in a community-based study of 6–8-year-old Australian children. *Eur Child Adolesc Psychiatry* 2018; 27(6):811-9
44. Sciberras E, Mulraney M, Anderson V, Rapee RM, **Nicholson JM**, Efron D, Lee K, Markopoulos Z, Hiscock H. Managing anxiety in children with ADHD using cognitive-behavioral therapy: a pilot randomized controlled trial. *J Atten Disord* 2018; 22(5):515-20
45. **Shafiei T**, **Biggs LJ**, **Small R**, **McLachlan HL**, **Forster DA**. Characteristics of women calling the PANDA Perinatal Anxiety & Depression Australia National Helpline: a cross-sectional study. *Arch Womens Ment Health* 2018; 21(6):801-12
46. Signorelli MC, Hillel S, de Oliveira DC, **Ayala Quintanilla BP**, Hegarty K, **Taft A**. Voices from low-income and middle-income countries: a systematic review protocol of primary healthcare interventions within public health systems addressing intimate partner violence against women. *BMJ Open* 2018; 8:e019266
47. Signorelli MC, **Taft A**, Pereira PPG. Domestic violence against women, public policies and community health workers in Brazilian Primary Health Care. *Cien Saude Colet* 2018; 23:93-102
48. Stanesby O, Callinan S, Graham K, **Wilson IM**, Greenfield TK, Wilsnack SC, Hettige S, Hanh HTM, Siengsounthone L, Waleewong O, Laslett A-M. Harm from known others' drinking by relationship proximity to the harmful drinker and gender: A meta-analysis across 10 countries. *Alcohol Clin Exp Res* 2018; 42(9):1693-703
49. Sulaiman Z, Liamputtong P, **Amir LH**. Timing of return to work and women's breastfeeding practices in urban Malaysia: A qualitative study. *Health Soc Care Community* 2018; 26(1):48-55
50. **Taft AJ**, **Shankar M**, Black K, Mazza D, Hussainy S, Lucke JC. Unintended and unwanted pregnancy in Australia: a cross-sectional, national random telephone survey of prevalence and outcomes. *Med J Aust* 2018; 209(9):407-8
51. Tan M, O'Doherty L, Gilchrist G, **Taft A**, Feder G, Tirado Muñoz J, Chondros P, Sadowski L, Hegarty K. Psychological therapies for women who experience intimate partner violence. *Cochrane Database Syst Rev* 2018; 5, CD013017
52. Thomas DP, Hefler M, Bonevski B, Calma T, Carapetis J, **Chamberlain C**, Chapman S, Daube M, Eades S, Finlay SM, Freeman B, Lovett R, MacKenzie R, Maddox R, Wakefield M. Australian researchers oppose funding from the Foundation for a Smoke-Free World. *Aust N Z J Public Health* 2018; 42(6):506-7
53. **Wallace HJ**, **McDonald S**, Belton S, Miranda AI, Costa Ed, Matos LdC, Henderson H, **Taft A**. Body mapping to explore reproductive ethno-physiological beliefs and knowledge of contraception in Timor-Leste. *Qual Health Res* 2018; 28(7):1171-84
54. **Wallace HJ**, **McDonald S**, Belton S, Miranda AI, da Costa E, da Conceicao Matos L, Henderson H, **Taft A**. What influences a woman's decision to access contraception in Timor-Leste? Perceptions from Timorese women and men. *Cult Health Sex* 2018; 20(12):1317-32
55. **Wallace HJ**, **McDonald S**, Belton S, Miranda AI, da Costa E, Matos LdC, Henderson H, **Taft A**. The decision to seek care antenatally and during labour and birth – Who and what influences this in Timor-Leste? A qualitative project exploring the perceptions of Timorese women and men. *Midwifery* 2018; 65:35-42

56. **Westrupp EM, Bennett C, Cullinane M, Hackworth NJ,** Berthelsen D, Reilly S, Mensah FK, Gold L, Bennetts SK, Levickis P, Nicholson JM. EHLS at School: school-age follow-up of the Early Home Learning Study cluster randomized controlled trial. *BMC Pediatr* 2018; 18:148
57. **Westrupp EM,** Brown S, Woolhouse H, Gartland D, **Nicholson JM.** Repeated early-life exposure to inter-parental conflict increases risk of preadolescent mental health problems. *Eur J Pediatr* 2018; 177(3):419-27
58. Wheaton N, Lenehan J, **Amir LH.** Evaluation of a breastfeeding app in rural Australia: Prospective cohort study. *J Hum Lact* 2018; 34(4):711-20
59. Whitford H, Hoddinott P, **Amir LH, Chamberlain C,** East CE, **Jones L,** Renfrew MJ. Routinely collected infant feeding data: Time for global action [short communication]. *Matern Child Nutr* 2018; 14(4):e12616
60. Williams KE, Berthelsen D, Viviani M, **Nicholson JM.** Facilitated parent-child groups as family support: a systematic literature review of supported playgroup studies. *J Child Fam Stud* 2018; 27(8):2367-83
5. **Flood M, McDonald SJ,** Pollock W, Cullinane F, **Davey M-A.** Incidence, trends and severity of primary postpartum haemorrhage in Australia: A population-based study using Victorian Perinatal Data Collection data for 764 244 births. *Aust N Z J Obstet Gynaecol* 2018 (in press). Epub 2018 May 22
6. **Forster DA,** McKay H, **Davey M-A, Small R,** Cullinane F, **Newton M,** Powell R, **McLachlan HL.** Women's views and experiences of publicly-funded homebirth programs in Victoria, Australia: A cross-sectional survey. *Women Birth* 2018 (in press). Epub 2018 Aug 10
7. Graham K, Bernards S, Laslett A-M, Gmel G, Kuntsche S, Wilsnack S, Bloomfield K, Grittner U, **Taft A, Wilson I,** Wells S. Children, parental alcohol consumption and intimate partner violence: A multi-country analysis by perpetration versus victimization and sex. *J Interpers Violence* 2018 (in press). Epub 2018 Oct 17
8. Heris CL, Thomas DP, Lyons L, **Chamberlain C,** Eades SJ. Changes in the age smoking commences for young Aboriginal and/or Torres Strait Islander peoples who smoke, 2002 to 2015. *Public Health Res Pract*
9. **Hooker L,** Theobald J, Anderson K, Billet P, Baron P. Violence against young women in non-urban areas of Australia: A scoping review. *Trauma, Violence, & Abuse* 2017 (in press). Epub 2017 Aug 17
10. Mulraney M, Giallo R, Efron D, Brown S, **Nicholson JM,** Sciberras E. Maternal postnatal mental health and offspring symptoms of ADHD at 8-9 years: pathways via parenting behavior. *Eur Child Adolesc Psychiatry* 2018 (in press). Epub 2018 Nov 10
11. **Wild KJ,** Gomes L, Fernandes A, de Araujo G, Madeira I, da Conceicao Matos L, **McDonald S, Taft A.** Responding to violence against women: A qualitative study with midwives in Timor-Leste. *Women Birth* 2018 (in press). Epub 2018 Nov 15

ARTICLES IN PRESS

1. Ball G, Malpas CB, Genc S, Efron D, Sciberras E, Anderson V, **Nicholson JM,** Silk TJ. Multimodal structural neuroimaging markers of brain development and ADHD symptoms. *Am J Psychiatry* 2018 (in press). Epub 2018 Sep 17
2. **Biggs LJ, McLachlan HL, Shafiei T,** Liamputtong P, **Forster DA.** 'I need help': Reasons new and re-engaging callers contact the PANDA—Perinatal Anxiety and Depression Australia National Helpline: HSCC-OA-18-0017. *Health Soc Care Community* 2018 (in press). Epub 2018 Dec 3
3. **Biggs LJ, McLachlan HL, Shafiei T, Small R, Forster DA.** Peer supporters' experiences on an Australian perinatal mental health helpline. *Health Promot Int* 2018 (in press). Epub 2018 Jan 16
4. **Coca KP, Amir LH,** Alves MdRdS, Barbieri M, Marcacine KO, de Vilhena Abrão ACF. Measurement tools and intensity of nipple pain among women with or without damaged nipples: A quantitative systematic review. *J Adv Nurs* 2018 (in press). Epub 2018 Nov 08



Health Check: is it safe to express milk before giving birth?

Publications

COMMENTARIES, EDITORIALS AND LETTERS IN REFEREED JOURNALS

1. **Cullinane M, Amir LH.** In response to "Microbial diversity in milk of women with mastitis: potential role of coagulase-negative Staphylococci, Viridans Group Streptococci, and Corynebacteria" [Letter to the Editor]. *J Hum Lact* 2017; 33(4):815-6
2. Lowe AJ, Su JC, Allen KJ, Abramson MJ, Cranswick N, Robertson CF, **Forster D**, Varigos G, Hamilton S, Kennedy R, Axelrad C, Tang MLK, Dharmage SC. A randomized trial of a barrier lipid replacement strategy for the prevention of atopic dermatitis and allergic sensitization: the PEBBLES pilot study [Research Letter]. *Br J Dermatol* 2018; 178(1):e19-e21
3. **Taft A**, Colombini M. Healthcare system responses to intimate partner violence in low and middle-income countries: evidence is growing and the challenges become clearer [Commentary]. *BMC Med* 2017; 15:127
4. **Taft AJ, Shankar M**, Black K, Mazza D, Hussainy S, Lucke JC. Unintended and unwanted pregnancy in Australia: a cross-sectional, national random telephone survey of prevalence and outcomes [Research Letter]. *Med J Aust* 2018; 209(9):407-8
5. **Whitburn LY, Jones LE, Davey M-A, Small R.** Supporting the updated definition of pain. But what about labour pain? [Letter to the Editor]. *Pain* 2017; 158(5):990-1

BOOKS / BOOK CHAPTERS

1. **Hooker L.** Maternal, child and family health nursing. In: Guzys D, Brown R, Halcomb E, Whitehead D, editors. An introduction to Community and Primary Health Care. 2nd ed. Port Melbourne: Cambridge University Press; 2017
2. **Taft A, Hooker L.** Domestic and family violence. In: Thomson G, Schmied V, editors. Psychosocial resilience and risk in the perinatal period: Implications and guidance for professionals. London: Routledge; 2017

REPORTS

1. **Crawford S, Hokke S, Hackworth N**, Lucke J, Zion L, Keyzer P, **Nicholson J.** The ethics of recruiting, retaining and tracing research participants online: Research Summary. Bundoora: La Trobe University; 2018
2. **Forster D, Shafiei T, Biggs L, McLachlan H**, Smith T, Wyatt C, Wadley G, Stelfox S. IVY- InVestigating an online communitY of support for emotional health in pregnancy. Melbourne: Judith Lumley Centre, La Trobe University; 2018
3. **Hooker LN, Taft A, Nicholson J, Ridgway L.** Victorian maternal and child health workforce family violence training needs analysis. Melbourne: La Trobe University; 2018
4. Kaspiew R, Horsfall B, Qu L, **Nicholson JM**, Humphreys C, Diemer K, Nguyen CD, Buchanan F, **Hooker L, Taft A, Westrupp EM, Cooklin AR**, Carson R, Dunstan J. Domestic and family violence and parenting: Mixed method insights into impact and support needs: Final report. Sydney: ANROWS; 2017
5. Kaspiew R, Horsfall B, Qu L, **Nicholson JM**, Humphreys C, Diemer K, Nguyen CD, Buchanan F, **Hooker L, Taft A, Westrupp EM, Cooklin AR**, Carson R, Dunstan J. Domestic and family violence and parenting: Mixed method insights into impact and support needs: Key findings and future directions. (ANROWS Compass 04/2017). Sydney: ANROWS; 2017
6. **Shafiei T, Forster D, Nicholson JM, McLachlan H, Newton M, Grimes H, McLardie-Hore F, Hay S.** The 'Growing Together' evaluation: phase two. Melbourne: The Royal Women's Hospital; 2017
7. **Shafiei T, Forster D, Nicholson JM, McLachlan H, Newton M, Grimes H, McLardie-Hore F, Hay S.** The 'Growing Together' evaluation: final report. Melbourne: The Royal Women's Hospital; 2017
8. **Shafiei T, Flood M, Bee J.** Identifying the perinatal mental health needs of immigrant and refugee women. Melbourne: Judith Lumley Centre, La Trobe University; 2018.
9. **Taft A, Hooker LN, Nicholson J, Ridgway L.** Maternal and child health workforce family violence professional development plan. Melbourne: La Trobe University; 2018.

OTHER PUBLICATIONS

1. **Adams C.** A Churchill Fellowship: Examining intensive home visiting for vulnerable young mothers. *Aust Nurs Midwifery J* 2017; 25(4):22
2. De Araujo G, Wild K, Gomes L, Fernandes A, Marcal L, **Taft A.** Women's voices shaping health responses to violence against women in Timor-Leste [video]. Dili, Timor Leste: Doliili House Productions; 2018
3. Johnston J, **Reisenhofer S.** Supporting enrolled nurses transiting to university. *Aust Nurs Midwifery J* 2017; 25(1):33
4. **Moorhead AM, Forster D, Amir LH.** Breastfeeding for women with diabetes. *Australian Diabetes Educator* 2018; 21
5. **Moorhead A,** McEgan K, **Forster D, Amir LH.** Expressing breastmilk during pregnancy. *O&G Magazine* 2018; 20(1): 34-35
6. **Wild K,** De Araujo G, Gomes L, Fernandes A, Marcal L, **Taft A.** Hahu Relasaun diak (Begin a good relationship): Video role play for health providers responding to violence against women in Timor-Leste [video]. Dili, Timor Leste: Doliili House Productions; 2018
7. Wilson A, Tokhi M, **Amir LH.** Big Formula follows Big Tobacco playbook. *MJA InSight* 2018; 23 July 2018(28)



Shut up and write! at the Judith Lumley Centre – weekly facilitated writing sessions designed to help researchers get their writing done

Funds

FUNDS 2017

Funds received from the sources listed here totalled: **\$3,681,894.28**

The contributors from all granting bodies are gratefully acknowledged.

Australian Research Council (ARC) **\$110,451.28**

Discovery Early Career Researcher Award (DECRA): Leading change on violence against women through the health sector	\$110,451.28
---	--------------

National Health and Medical Research Council (NHMRC) **\$664,123.90**

EHS at School: Reducing the impact of early life disadvantage via the home learning environment	\$125,471.50
---	--------------

Baggarook Yarrongi: Improving the Health of Aboriginal mothers and babies through continuity of midwife care	\$378,516.84
--	--------------

Translating Research Into Practice (TRIP) Fellowship: Improving management of mastitis in lactating women	\$89,558.88
---	-------------

The Safer Families Centre of Research Excellence	\$70,576.68
--	-------------

Improving cardio-metabolic health outcomes in Indigenous Australian mothers	-
---	---

Lowitja Institute **\$91,299.00**

Healing the Past By Nurturing the Future	\$91,299.00
--	-------------

Transition to Contemporary Parenthood **\$702,320.33**

Roberta Holmes	\$632,324.00
----------------	--------------

La Trobe University contribution	\$69,996.33
----------------------------------	-------------

Royal Women's Hospital **\$167,254.84**

Developing midwifery and maternity services research and practice	\$117,254.84
---	--------------

Maternity and newborn emergencies (MANE) evaluation	\$50,000.00
---	-------------

Birth for Humankind **\$30,000.00**

PhD Industry Scholarship: Birthing women's and professional stakeholders' experiences of volunteer doula support	\$30,000.00
--	-------------

The Multicultural Centre for Women's Health **\$10,000.00**

Identifying the perinatal mental health needs of immigrant and refugee women	\$8,500.00
--	------------

Literature review for 'Your Fertility' pilot partnership project	\$1,500.00
--	------------

Norman Beischer Medical Research Foundation **\$102,317.00**

Scholarship (Pamela McCalman <i>What are the views and experiences of Aboriginal and Torres Strait Islander women having a baby in Victoria?</i>)	\$102,317.00
--	--------------

Vic Health Promotion Foundation **\$104,501.64**

Alcohol Policy Research (CAPR) symposium at Global Alcohol Policy Conference	\$53,401.65
--	-------------

Developing a priority-driven research agenda for preventing and responding to alcohol-related violence against women	\$51,099.99
Victorian Department Education and Training	\$4,900.00
Safe Infant Sleeping Guidelines	\$4,900.00
World Health Organization	\$24,896.04
Adaptation and piloting of curriculum for health service providers to identify and support women who have experienced intimate partner or sexual violence in Timor-Leste	\$24,896.04
Block Grants	\$295,639.90
Research Training Program	\$146,411.22
Research Support Program	\$149,228.68
La Trobe Contribution	\$1,288,170.96
Operating budget including supervision of students	\$75,838.62
LTU Internal Contribution	\$938,761.46
Research Focus Area projects	\$95,236.05
Research Focus Area Big Bid	\$80,981.28
Research Centre Support	\$99,353.55
Miscellaneous income	\$16,023.06
Other income	\$16,023.06

Funds

FUNDS 2018

Funds received from the sources listed here totalled: **\$3,735,324.56**

The contributors from all granting bodies are gratefully acknowledged.

Australian Research Council (ARC)	\$122,585.41
Discovery Early Career Researcher Award (DECRA): Leading change on violence against women through the health sector	\$122,585.41
National Health and Medical Research Council (NHMRC)	\$1,395,348.41
EHLs at School: Reducing the impact of early life disadvantage via the home learning environment	\$144,848.14
Baggarook Yarrongi: Improving the Health of Aboriginal mothers and babies through continuity of midwife care	\$381,256.12
Translating Research into Practice (TRIP) Fellowship: Improving management of mastitis in lactating women	\$90,532.70
Safer Families Centre of Research Excellence	\$76,358.64
Improving cardio-metabolic health outcomes in Indigenous Australian mothers	\$81,798.76
Healing the Past by Nurturing the Future: Learning how to identify and support Indigenous parents who have experienced childhood trauma	\$209,216.69
HARMONY: Trial of a whole of general practice intervention to prevent and reduce domestic violence among migrant and refugee communities	\$224,216.03
DAISY: Preventing postnatal depression in new mothers using telephone peer support	\$187,121.33
Lowitja Institute	\$123,565.00
Healing the Past by Nurturing the Future	\$123,565.00
Royal Women's Hospital	\$167,095.00
Developing midwifery and maternity services research and practice	\$117,095.00
Maternity and Newborn Emergencies (MANE) Evaluation	\$50,000.00
Birth for Humankind	\$40,000.00
PhD Industry Scholarship: Birthing women's and professional stakeholders' experiences of volunteer doula support	\$40,000.00
The Multicultural Centre for Women's Health	\$10,000.00
Identifying the perinatal mental health needs of immigrant and refugee women	\$8,500.00
Literature review for 'Your Fertility' pilot partnership project	\$1,500.00
Victorian Department Education and Training	\$194,005.46
Maternal and child health workforce professional development plan – family violence	\$194,005.46

Victorian Department of Premier and Cabinet	\$100,000.00
--	---------------------

HARMONY: Trial of a whole of general practice intervention to prevent and reduce domestic violence among migrant and refugee communities	\$100,000.00
--	--------------

Commonwealth Department of Social Services	\$200,000.00
---	---------------------

HARMONY: Trial of a whole of general practice intervention to prevent and reduce domestic violence among migrant and refugee communities	\$200,000.00
--	--------------

Block Grants	\$486,299.04
---------------------	---------------------

Research Training Program	\$284,768.43
---------------------------	--------------

Research Support Program	\$201,530.61
--------------------------	--------------

La Trobe Contribution	\$824,875.78
------------------------------	---------------------

Operating budget including supervision of students	\$88,670.30
--	-------------

LTU Internal Contribution	\$527,463.83
---------------------------	--------------

Research Focus Area projects	\$71,468.67
------------------------------	-------------

Research Focus Area Big Bid	\$37,272.98
-----------------------------	-------------

Research Centre Support	\$100,000.00
-------------------------	--------------

Miscellaneous income	\$71,550.46
-----------------------------	--------------------

Other income	\$18,569.04
--------------	-------------

Interest	\$52,981.42
----------	-------------



La Trobe University acknowledges that our campuses are located on the lands of many traditional custodians in Victoria and New South Wales. We recognise their ongoing connection to the land and value their unique contribution to the University and wider Australian society.

La Trobe University is committed to providing opportunities for Aboriginal and Torres Strait Islander people, both as individuals and communities, through teaching and learning, research and community partnerships across all of our campuses.

The wedge-tailed eagle (*Aquila audax*) is one of the world's largest.

The Wurundjeri people – traditional owners of the land where our Melbourne campuses are located – know the wedge-tailed eagle as Bunjil, the creator spirit of the Kulin Nations.

There is a special synergy between Bunjil and the La Trobe University logo of an eagle. The symbolism and significance for both La Trobe and for Aboriginal people challenges us all to 'gamagoen yarrbat' – to soar.



Judith Lumley Centre

for mother, infant and family health research

A La Trobe University
Level 3, George Singer Building
Bundoora Vic 3086
T +61 3 9479 8800
E jlc@latrobe.edu.au
W www.latrobe.edu.au/jlc