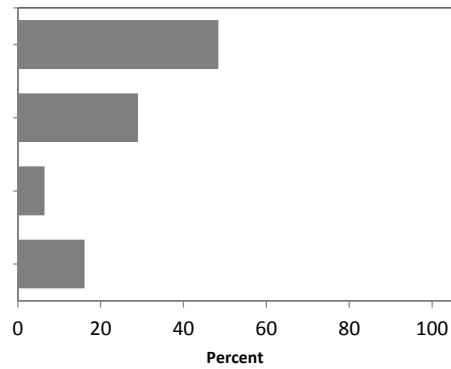


MEMBERSHIP

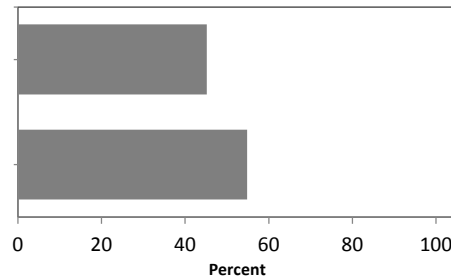
1) *I have been on the Academic Board for:*

	Count	%
1 Less than 1 year	15	48.4
2 1 - 3 years	9	29.0
3 4 - 5 years	2	6.5
4 More than 5 years	5	16.1
Total	31	
Average	1.90	
Stdev	1.11	



2) *Have you attended one of the Academic Board induction sessions held at the beginning of the year?*

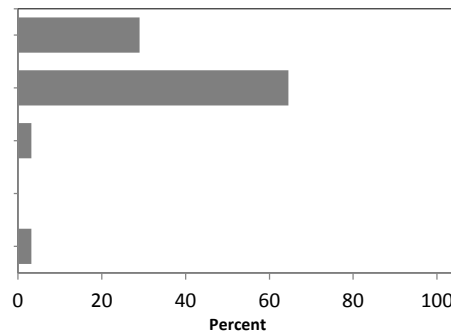
	Count	%
1 Yes	14	45.2
2 No	17	54.8
Total	31	
Average	1.55	
Stdev	0.51	



RESPONSIBILITIES

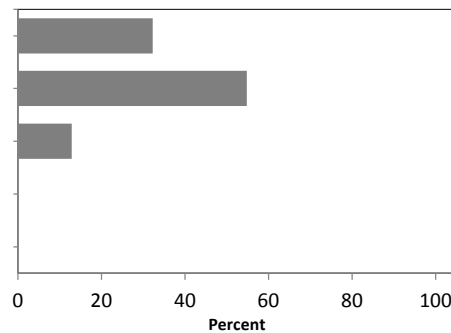
3) *During 2012, the Board performed its functions as set out in the Terms of Reference satisfactorily...*

	Count	%
1 Strongly Agree	9	29.0
2 Agree	20	64.5
3 Neutral	1	3.2
4 Disagree	0	0.0
5 Strongly Disagree	1	3.2
Total	31	
Average	1.84	
Stdev	0.78	



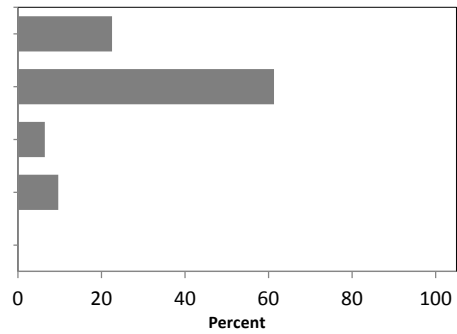
4) *During 2012, the Board's activities aligned with the University Strategic Plan...*

	Count	%
1 Strongly Agree	10	32.3
2 Agree	17	54.8
3 Neutral	4	12.9
4 Disagree	0	0.0
5 Strongly Disagree	0	0.0
Total	31	
Average	1.81	
Stdev	0.65	



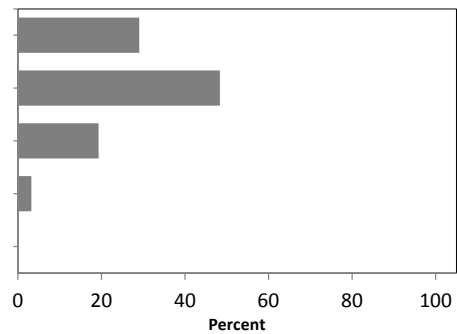
5) *During 2012, the Board promoted Teaching & Learning and Research satisfactorily...*

	Count	%
1 Strongly Agree	7	22.6
2 Agree	19	61.3
3 Neutral	2	6.5
4 Disagree	3	9.7
5 Strongly Disagree	0	0.0
Total	31	
Average	2.03	
Stdev	0.84	



6) *During 2012, the Board developed and monitored academic policies effectively...*

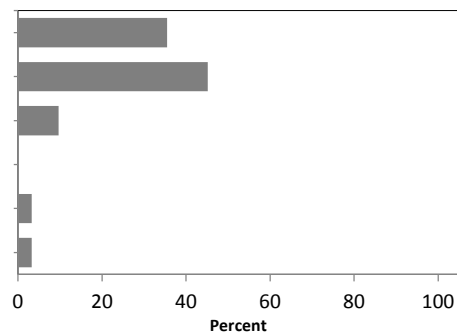
	Count	%
1 Strongly Agree	9	29.0
2 Agree	15	48.4
3 Neutral	6	19.4
4 Disagree	1	3.2
5 Strongly Disagree	0	0.0
Total	31	
Average	1.97	
Stdev	0.80	



ORGANISATIONAL MATTERS

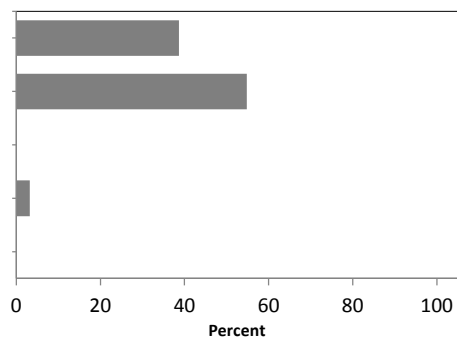
8) *Academic Board has served the University well...*

	Count	%
1 Strongly Agree	11	35.5
2 Agree	14	45.2
3 Neutral	3	9.7
4 Disagree	0	0.0
5 Strongly Disagree	1	3.2
Don't know	1	3.2
Total	30	
Average	1.97	
Stdev	1.16	



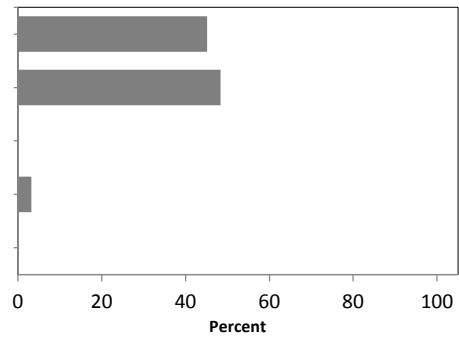
9) *The 2012 membership of the Board provided appropriate representation from across the University...*

	Count	%
1 Strongly Agree	12	38.7
2 Agree	17	54.8
3 Neutral	0	0.0
4 Disagree	1	3.2
5 Strongly Disagree	0	0.0
Total	30	
Average	1.67	
Stdev	0.66	



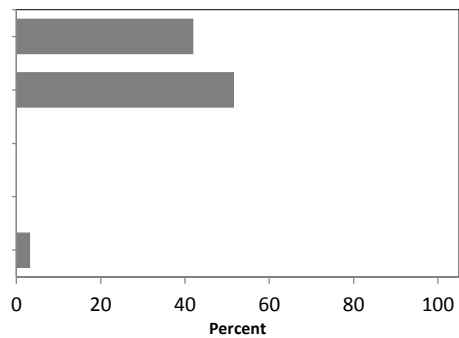
10) *The Board met frequently enough to perform its functions (it met 8 times during 2012)...*

	Count	%
1 Strongly Agree	14	45.2
2 Agree	15	48.4
3 Neutral	0	0.0
4 Disagree	1	3.2
5 Strongly Disagree	0	0.0
Total	30	
Average	1.60	
Stdev	0.67	



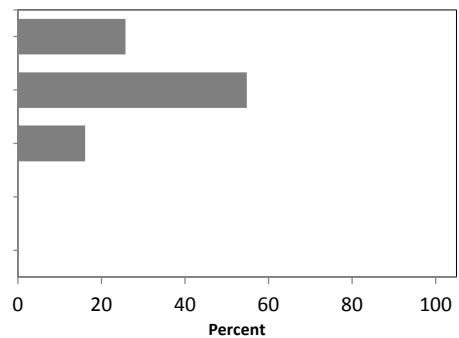
11) *The structure of the Board's agenda was satisfactory...*

	Count	%
1 Strongly Agree	13	41.9
2 Agree	16	51.6
3 Neutral	0	0.0
4 Disagree	0	0.0
5 Strongly Disagree	1	3.2
Total	30	
Average	1.67	
Stdev	0.80	



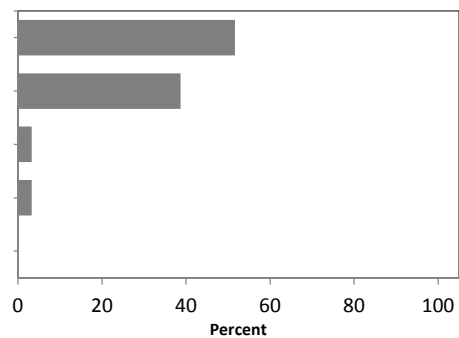
12) *The standard of submissions/attached papers was satisfactory...*

	Count	%
1 Strongly Agree	8	25.8
2 Agree	17	54.8
3 Neutral	5	16.1
4 Disagree	0	0.0
5 Strongly Disagree	0	0.0
Total	30	
Average	1.90	
Stdev	0.66	



13) *The Vice-Chancellor's report was informative and useful...*

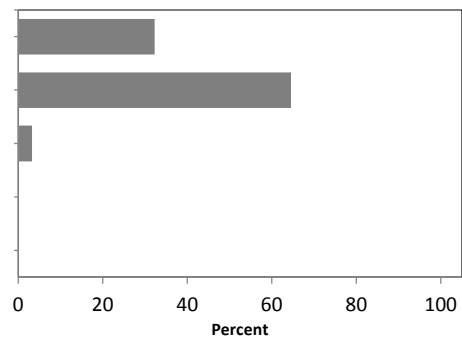
	Count	%
1 Strongly Agree	16	51.6
2 Agree	12	38.7
3 Neutral	1	3.2
4 Disagree	1	3.2
5 Strongly Disagree	0	0.0
Total	30	
Average	1.57	
Stdev	0.73	



STAKEHOLDER RELATIONSHIPS

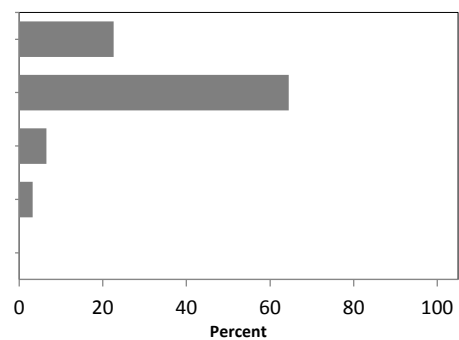
15) *I understand the relationship between Academic Board and its policy committee and sub-committees...*

	Count	%
1 Strongly Agree	10	32.3
2 Agree	20	64.5
3 Neutral	1	3.2
4 Disagree	0	0.0
5 Strongly Disagree	0	0.0
Total	31	
Average	1.71	
Stdev	0.53	



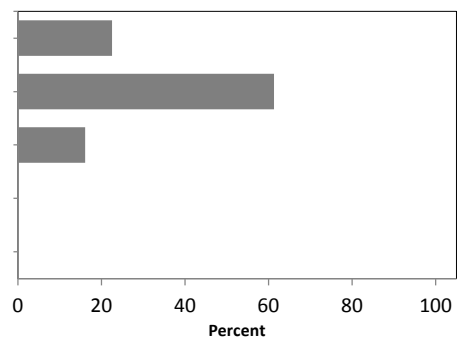
16) *The number and composition of policy committee and sub-committees provide sufficient breadth and depth to academic governance...*

	Count	%
1 Strongly Agree	7	22.6
2 Agree	20	64.5
3 Neutral	2	6.5
4 Disagree	1	3.2
5 Strongly Disagree	0	0.0
Total	31	
Average	2.03	
Stdev	0.98	



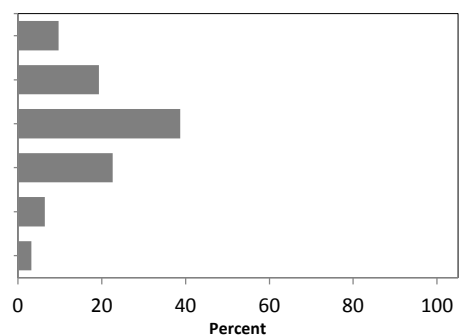
17) *The reports from policy committee and sub-committees of Academic Board provide enough detail for informed discussion...*

	Count	%
1 Strongly Agree	7	22.6
2 Agree	19	61.3
3 Neutral	5	16.1
4 Disagree	0	0.0
5 Strongly Disagree	0	0.0
Total	31	
Average	1.94	
Stdev	0.63	



18) *The Board communicates its decisions effectively to staff and students...*

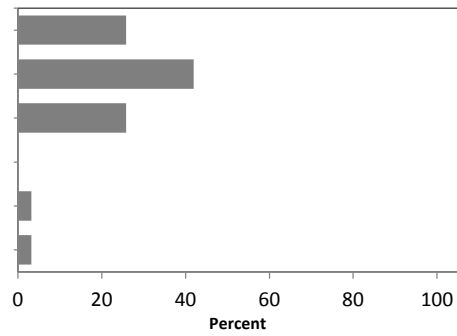
	Count	%
1 Strongly Agree	3	9.7
2 Agree	6	19.4
3 Neutral	12	38.7
4 Disagree	7	22.6
5 Strongly Disagree	2	6.5
Don't know	1	3.2
Total	31	
Average	3.06	
Stdev	1.18	



OPERATIONAL MATTERS

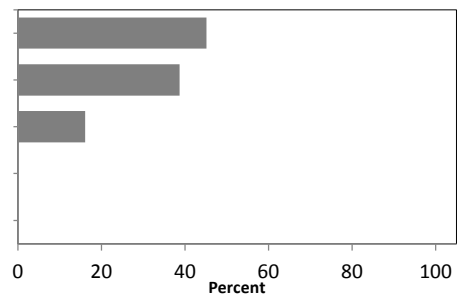
20) *During 2012, the Board worked well as a group...*

	Count	%
1 Strongly Agree	8	25.8
2 Agree	13	41.9
3 Neutral	8	25.8
4 Disagree	0	0.0
5 Strongly Disagree	1	3.2
Don't know	1	3.2
Total	31	
Average	2.23	
Stdev	1.15	



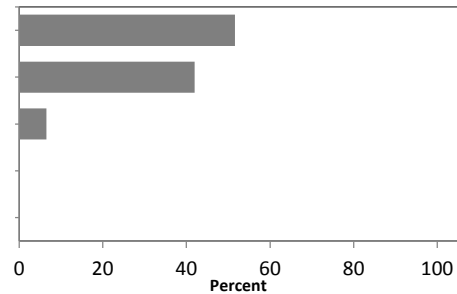
21) *During 2012, the roles and responsibilities of the chair were discharged appropriately...*

	Count	%
1 Strongly Agree	14	45.2
2 Agree	12	38.7
3 Neutral	5	16.1
4 Disagree	0	0.0
5 Strongly Disagree	0	0.0
Total	31	
Average	1.71	
Stdev	0.74	



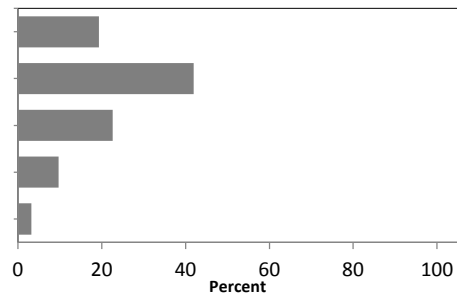
22) *The standard of Secretariat support to Academic Board and its policy committees was high...*

	Count	%
1 Strongly Agree	16	51.6
2 Agree	13	41.9
3 Neutral	2	6.5
4 Disagree	0	0.0
5 Strongly Disagree	0	0.0
Total	31	
Average	1.55	
Stdev	0.62	



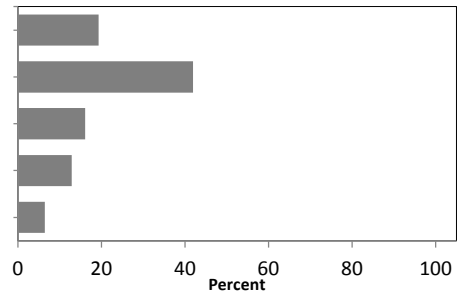
23) *During 2012, the level of discussion on each item was appropriate...*

	Count	%
1 Strongly Agree	6	19.4
2 Agree	13	41.9
3 Neutral	7	22.6
4 Disagree	3	9.7
5 Strongly Disagree	1	3.2
Total	31	
Average	2.45	
Stdev	1.21	



24) *I felt encouraged to contribute to discussion during Board meetings...*

	Count	%
1 Strongly Agree	6	19.4
2 Agree	13	41.9
3 Neutral	5	16.1
4 Disagree	4	12.9
5 Strongly Disagree	2	6.5
Total	30	
Average	2.43	
Stdev	1.17	



25) *I am satisfied with my own contributions at Board meetings...*

	Count	%
1 Strongly Agree	8	25.8
2 Agree	10	32.3
3 Neutral	10	32.3
4 Disagree	1	3.2
5 Strongly Disagree	2	6.5
Total	31	
Average	2.32	
Stdev	1.11	

