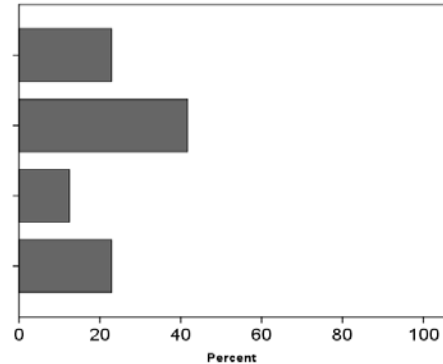


**MEMBERSHIP**

1) *I have been on the Academic Board for:*

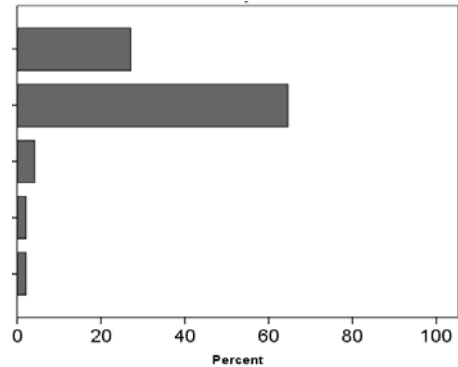
|                     | Count     | %    |
|---------------------|-----------|------|
| 1 Less than 1 year  | 11        | 22.9 |
| 2 1 - 3 years       | 20        | 41.7 |
| 3 4 - 5 years       | 6         | 12.5 |
| 4 More than 5 years | 11        | 22.9 |
| <b>Total</b>        | <b>48</b> |      |
| Average             | 2.35      |      |
| Stdev               | 1.08      |      |



**RESPONSIBILITIES**

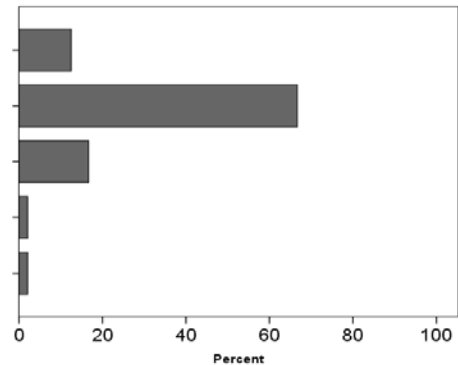
2) *During 2011, the Board performed its functions as set out in the Terms of Reference satisfactorily...*

|                  | Count     | %    |
|------------------|-----------|------|
| 1 Strongly Agree | 13        | 27.1 |
| 2 Agree          | 31        | 64.6 |
| 3 Neutral        | 2         | 4.2  |
| 4 Disagree       | 1         | 2.1  |
| Don't Know       | 1         | 2.1  |
| <b>Total</b>     | <b>47</b> |      |
| Average          | 1.81      |      |
| Stdev            | 0.61      |      |



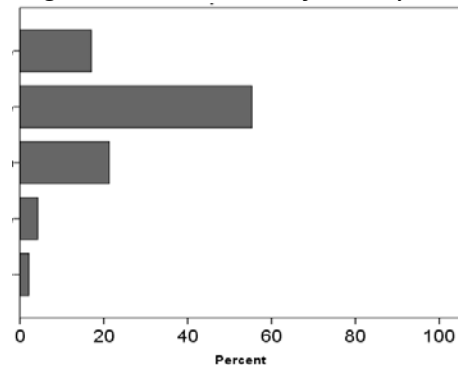
3) *During 2011, the Boards's activities aligned with the University Strategic Plan...*

|                  | Count     | %    |
|------------------|-----------|------|
| 1 Strongly Agree | 6         | 12.5 |
| 2 Agree          | 32        | 66.7 |
| 3 Neutral        | 8         | 16.7 |
| 4 Disagree       | 1         | 2.1  |
| Don't know       | 1         | 2.1  |
| <b>Total</b>     | <b>47</b> |      |
| Average          | 2.09      |      |
| Stdev            | 0.62      |      |



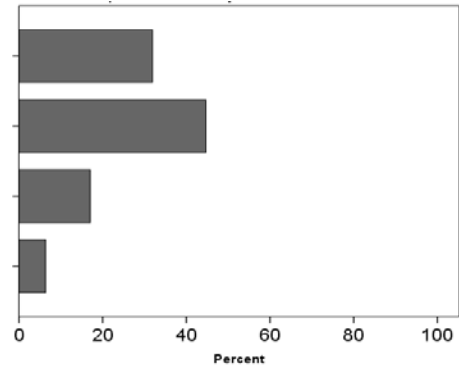
4) *During 2011, the Board promoted Teaching & Learning and Research satisfactorily...*

|                  | Count     | %    |
|------------------|-----------|------|
| 1 Strongly Agree | 8         | 17.0 |
| 2 Agree          | 26        | 55.3 |
| 3 Neutral        | 10        | 21.3 |
| 4 Disagree       | 2         | 4.3  |
| 6 Don't know     | 1         | 2.1  |
| <b>Total</b>     | <b>46</b> |      |
| Average          | 2.13      |      |
| Stdev            | 0.75      |      |



5) *During 2010, the Board developed and monitored academic policies effectively...*

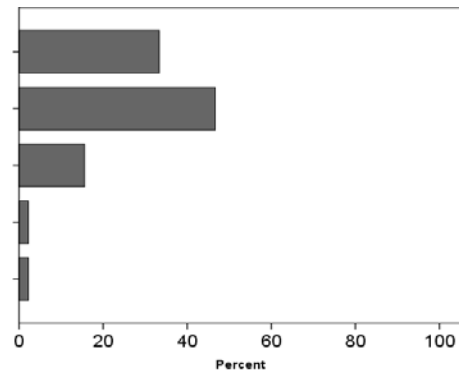
|                  | Count     | %    |
|------------------|-----------|------|
| 1 Strongly Agree | 15        | 31.9 |
| 2 Agree          | 21        | 44.7 |
| 3 Neutral        | 8         | 17.0 |
| 4 Disagree       | 3         | 6.4  |
| <b>Total</b>     | <b>47</b> |      |
| Average          | 1.98      |      |
| Stdev            | 0.87      |      |



**ORGANISATIONAL MATTERS**

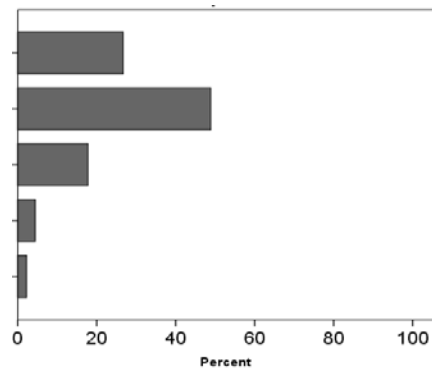
6) *Academic Board has served the University well...*

|                  | Count     | %    |
|------------------|-----------|------|
| 1 Strongly Agree | 15        | 33.3 |
| 2 Agree          | 21        | 46.7 |
| 3 Neutral        | 7         | 15.6 |
| 4 Disagree       | 1         | 2.2  |
| Don't know       | 1         | 2.2  |
| <b>Total</b>     | <b>44</b> |      |
| Average          | 1.86      |      |
| Stdev            | 0.77      |      |



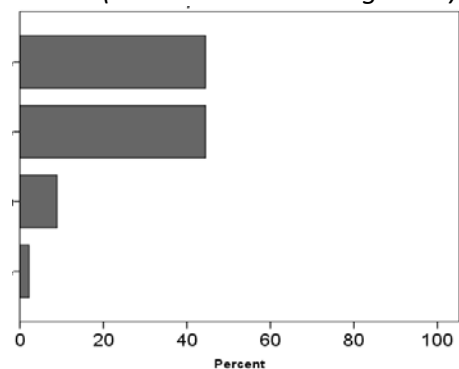
7) *The 2010 membership of the Board provided appropriate representation from across the University...*

|                     | Count     | %    |
|---------------------|-----------|------|
| 1 Strongly Agree    | 12        | 26.7 |
| 2 Agree             | 22        | 48.9 |
| 3 Neutral           | 8         | 17.8 |
| 4 Disagree          | 2         | 4.4  |
| 5 Strongly Disagree | 1         | 2.2  |
| <b>Total</b>        | <b>45</b> |      |
| Average             | 2.07      |      |
| Stdev               | 0.92      |      |



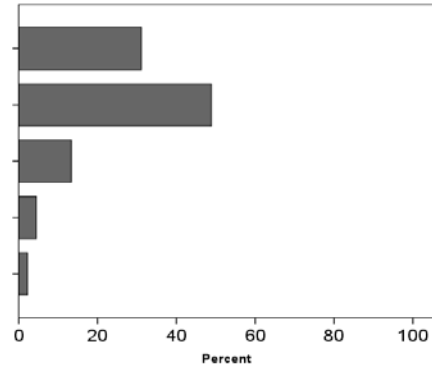
8) *The Board met frequently enough to perform its functions (it met 8 times during 2011)...*

|                   | Count     | %    |
|-------------------|-----------|------|
| 1. Strongly Agree | 20        | 44.4 |
| 2. Agree          | 20        | 44.4 |
| 3. Neutral        | 4         | 8.9  |
| 4. Disagree       | 1         | 2.2  |
| <b>Total</b>      | <b>45</b> |      |
| Average           | 1.69      |      |
| Stdev             | 0.73      |      |



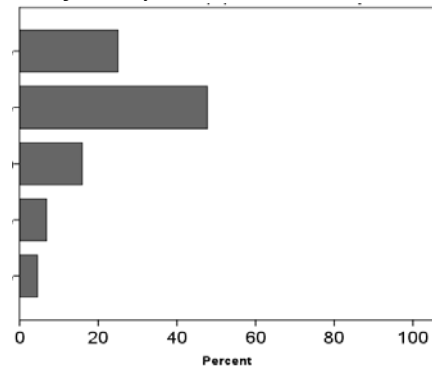
9) *The structure of the Board's agenda was satisfactory...*

|                     | Count     | %    |
|---------------------|-----------|------|
| 1 Strongly Agree    | 14        | 31.1 |
| 2 Agree             | 22        | 18.9 |
| 3 Neutral           | 6         | 13.3 |
| 4 Disagree          | 2         | 4.4  |
| 5 Strongly Disagree | 1         | 2.2  |
| <b>Total</b>        | <b>45</b> |      |
| Average             | 1.98      |      |
| Stdev               | 0.92      |      |



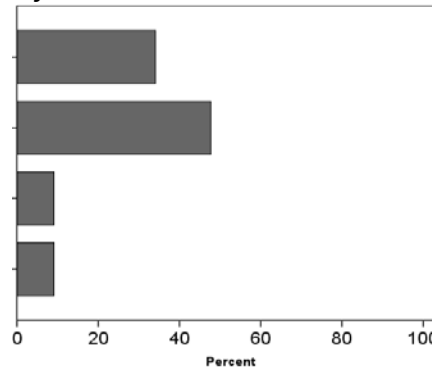
10) *The standard of submissions/attached papers was satisfactory...*

|                     | Count     | %    |
|---------------------|-----------|------|
| 1 Strongly Agree    | 11        | 25.0 |
| 2 Agree             | 21        | 47.7 |
| 3 Neutral           | 7         | 15.9 |
| 4 Disagree          | 3         | 6.8  |
| 5 Strongly Disagree | 2         | 4.5  |
| <b>Total</b>        | <b>44</b> |      |
| Average             | 2.18      |      |
| Stdev               | 1.04      |      |



11) *The Vice-Chancellor's report was informative and useful...*

|                  | Count     | %    |
|------------------|-----------|------|
| 1 Strongly Agree | 15        | 34.1 |
| 2 Agree          | 21        | 47.7 |
| 3 Neutral        | 4         | 9.1  |
| 4 Disagree       | 4         | 9.1  |
| <b>Total</b>     | <b>44</b> |      |
| Average          | 1.93      |      |
| Stdev            | 0.90      |      |

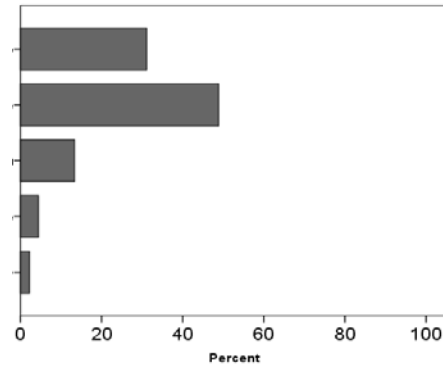


**STAKEHOLDER RELATIONSHIPS**

Please reflect on how the Board operated during 2010, in addressing its broader stakeholder obligations.

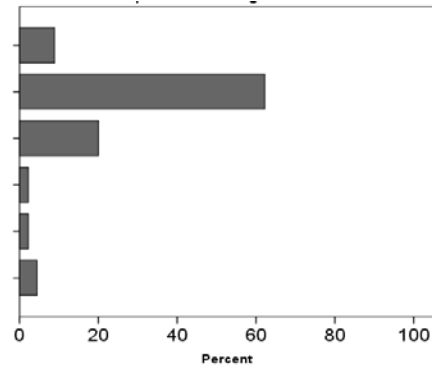
12) *I understand the relationship between Academic Board and its policy committee and sub-committees...*

|                  | Count     | %    |
|------------------|-----------|------|
| 1 Strongly Agree | 14        | 31.1 |
| 2 Agree          | 22        | 48.9 |
| 3 Neutral        | 6         | 13.3 |
| 4 Disagree       | 2         | 4.4  |
| Don't know       | 1         | 2.2  |
| <b>Total</b>     | <b>44</b> |      |
| Average          | 1.91      |      |
| Stdev            | 0.80      |      |



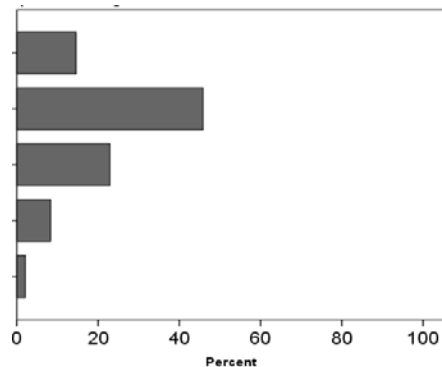
13) *The number and composition of policy committee and sub-committees provide sufficient breath and depth to academic governance...*

|                     | Count     | %    |
|---------------------|-----------|------|
| 1 Strongly Agree    | 4         | 8.9  |
| 2 Agree             | 28        | 62.2 |
| 3 Neutral           | 9         | 20.0 |
| 4 Disagree          | 1         | 2.2  |
| 5 Strongly Disagree | 1         | 2.2  |
| Don't know          | 2         | 4.4  |
| <b>Total</b>        | <b>43</b> |      |
| Average             | 2.23      |      |
| Stdev               | 0.75      |      |



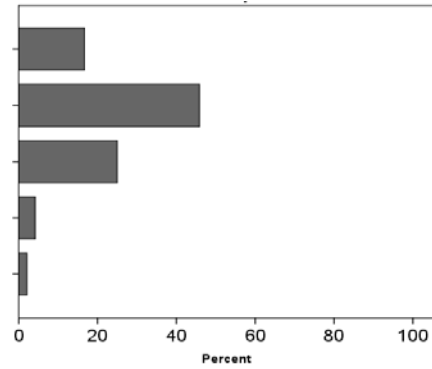
14) *The reports from policy committee and sub-committees of Academic Board provide enough details for informed discussion...*

|                  | Count     | %    |
|------------------|-----------|------|
| 1 Strongly Agree | 7         | 15.6 |
| 2 Agree          | 22        | 48.9 |
| 3 Neutral        | 11        | 24.4 |
| 4 Disagree       | 4         | 8.9  |
| Don't know       | 1         | 2.2  |
| <b>Total</b>     | <b>44</b> |      |
| Average          | 2.27      |      |
| Stdev            | 0.85      |      |



15) *The Board communicates its decisions effectively to staff and students...*

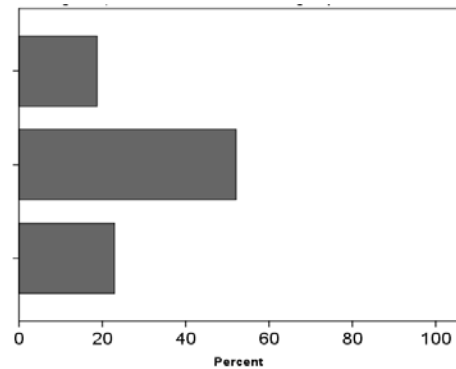
|                     | Count     | %    |
|---------------------|-----------|------|
| 2 Agree             | 8         | 17.8 |
| 3 Neutral           | 22        | 48.9 |
| 4 Disagree          | 12        | 26.7 |
| 5 Strongly Disagree | 2         | 4.4  |
| Don't know          | 1         | 2.2  |
| <b>Total</b>        | <b>44</b> |      |
| Average             | 3.18      |      |
| Stdev               | 0.79      |      |



**OPERATIONAL MATTERS**

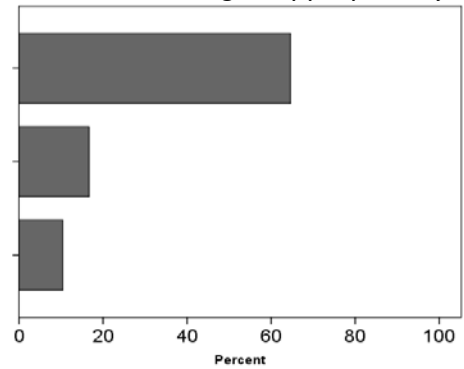
16) *During 2011, the Board worked well as a group...*

|                  | Count     | %    |
|------------------|-----------|------|
| 1 Strongly Agree | 9         | 20.0 |
| 2 Agree          | 25        | 55.6 |
| 3 Neutral        | 11        | 24.4 |
| <b>Total</b>     | <b>45</b> |      |
| Average          | 2.04      |      |
| Stdev            | 0.67      |      |



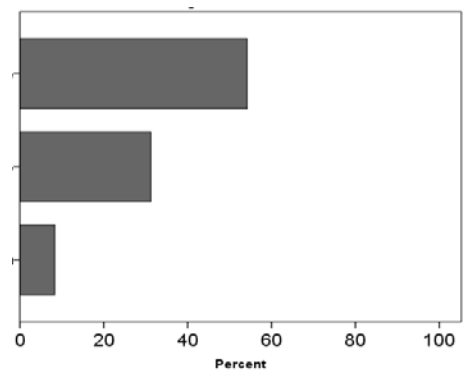
17) *During 2010, the roles and responsibilities of the Chair were discharged appropriately...*

|                  | Count     | %    |
|------------------|-----------|------|
| 1 Strongly Agree | 31        | 70.5 |
| 2 Agree          | 8         | 18.2 |
| 3 Neutral        | 5         | 11.4 |
| <b>Total</b>     | <b>44</b> |      |
| Average          | 1.41      |      |
| Stdev            | 0.69      |      |



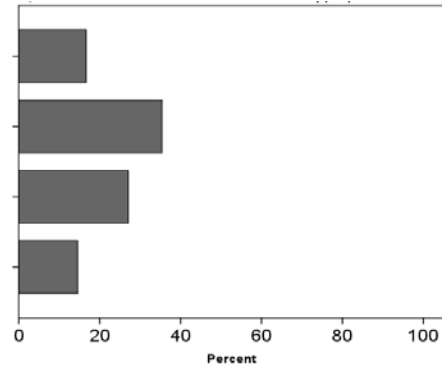
18) *The standard of Secretariat support to Academic Board and its policy committee was high...*

|                  | Count     | %    |
|------------------|-----------|------|
| 1 Strongly Agree | 26        | 57.8 |
| 2 Agree          | 15        | 33.3 |
| 3 Neutral        | 4         | 8.9  |
| <b>Total</b>     | <b>45</b> |      |
| Average          | 1.51      |      |
| Stdev            | 0.66      |      |



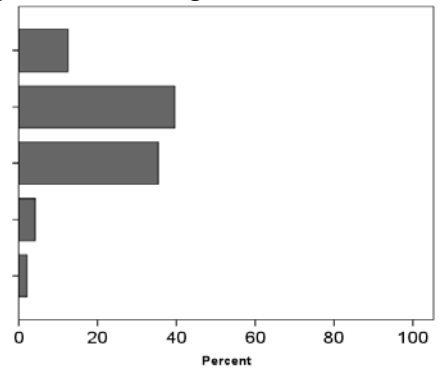
19) *During 2010, the level of discussion on each item was appropriate...*

|                  | Count     | %    |
|------------------|-----------|------|
| 1 Strongly Agree | 8         | 17.8 |
| 2 Agree          | 17        | 37.8 |
| 3 Neutral        | 13        | 28.9 |
| 4 Disagree       | 7         | 15.6 |
| <b>Total</b>     | <b>45</b> |      |
| Average          | 2.42      |      |
| Stdev            | 0.97      |      |



20) *I felt encouraged to contribute to discussion during Board meetings...*

|                     | Count     | %    |
|---------------------|-----------|------|
| 1 Strongly Agree    | 6         | 13.3 |
| 2 Agree             | 19        | 42.2 |
| 3 Neutral           | 17        | 37.8 |
| 4 Disagree          | 2         | 4.4  |
| 5 Strongly Disagree | 1         | 2.2  |
| <b>Total</b>        | <b>45</b> |      |
| Average             | 2.40      |      |
| Stdev               | 0.86      |      |



21) *I am satisfied with my own contributions at Board meetings...*

|                     | Count     | %    |
|---------------------|-----------|------|
| 1 Strongly Agree    | 7         | 15.6 |
| 2 Agree             | 20        | 44.4 |
| 3 Neutral           | 14        | 31.1 |
| 4 Disagree          | 3         | 6.7  |
| 5 Strongly Disagree | 1         | 2.2  |
| <b>Total</b>        | <b>45</b> |      |
| Average             | 2.36      |      |
| Stdev               | 0.91      |      |

