

**2020 2021 Summer 1, 2 & 3 Supplementary Special  
Term 6, 2020 Supplementary Special  
Sydney Study Period 3, 2020 Supplementary Special  
Term 1, 2021 Supplementary Special &  
Term 2, 2021 Assessment Period Timetable**

---

**Tuesday 20 April 2021 - Friday 23 April 2021 All campuses**

### **Things to know**

- Alternative assessment tasks will replace face to face exams this term.
  - Carefully check the date and start time for each assessment task.
  - All times listed are **Australian Eastern Standard Time (AEST)**.
  - Full details of the assessment task will be provided on the subject **LMS** site.
- 

### **How long do I have to complete my assessment task?**

- Some assessment tasks will have a set start and finish time.
- Others can be completed at any time throughout the specified window of time.
- Check **LMS** for the full details of the assessment task and for the allocated time you will have to complete the task.
- Make sure you allow yourself enough time to complete the assessment task before the end of the allocated time.

### **Assessment time 'windows'**

---

- Some assessment tasks are to be completed within a 'window' of time, for example 12 or 24 hours. You are not expected to use the entire window of time and you should not write more than what is required.
- Your subject coordinator will provide you with an indicative writing time to give you an indication of how long it will take to complete the assessment task.

## Alternative exam arrangements

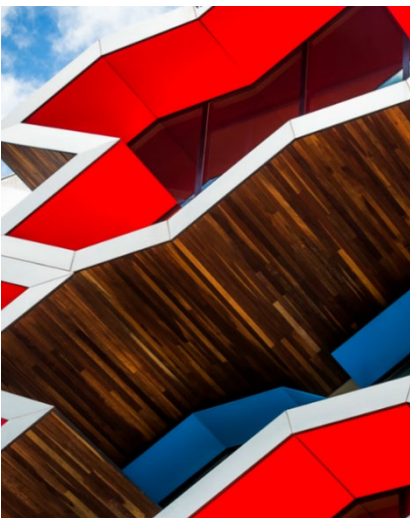
---

- If you have a **Learning Access Plan (LAP)**, normal arrangements will apply. Your subject coordinator will ensure you are provided with the provisions outlined in your LAP for each appropriate assessment task.
- If you have a queries regarding your LAP or if you require further support for your studies, please contact [Equity and Diversity](#).

## Special consideration

---

- If you are unable to complete an assessment task due to serious illness, emotional disturbance or misadventure, please notify your subject coordinator.
- If you meet the [eligibility criteria](#), you may [apply for special consideration](#) within 5 working days (inclusive) of the task. Relevant documentation must be provided to support an application.
- Failure to complete an assessment task by misreading the timetable **is not sufficient grounds** to apply for special consideration.



### Questions?

For more information about the assessment task, speak to your **Subject Coordinator**.

For technical support, contact [Student IT Support](#).

For all other queries, contact [ASK LA TROBE](#).





