



LA TROBE
UNIVERSITY



centre for alcohol
policy research



ANNUAL REPORT 2024

CONTENTS

About us	03	Alcohol Policies and Social Responses research stream	21
Director's message	04	Media and Emerging Technologies research stream	22
Snapshot of research indicators	06	Priority Populations research stream	24
CAPR Advisory Committee	09	Research translation	26
Staff and students	10	National and international collaborations	27
Measurement and Monitoring research stream	15	Academic awards and achievements	28
Intersections of Drinking Cultures, Health and Policy research stream	17	Service to the academic community	29
Alcohol-related Harm research stream	19	Funding details	31



ABOUT US

The Centre for Alcohol Policy Research (CAPR) is a world-class academic unit at the forefront of alcohol research.

Alcohol use results in a range of health and social harms. The World Health Organization (WHO) recognises alcohol as a causal factor in more than 60 major types of disease and injury, including liver cirrhosis, diabetes, cancer, road traffic accidents, violence and foetal alcohol spectrum disorders. WHO acknowledges that there is no safe level of drinking; each drink consumed increases the risks for various cancers, accidents and injuries.

In Australia as in many other countries, alcohol misuse is a leading preventable cause of death, illness and injury, producing around \$183M of avoidable costs to the society each day. In Australia, each day, more than five persons die prematurely because of alcohol use, and more than 82 are hospitalised.

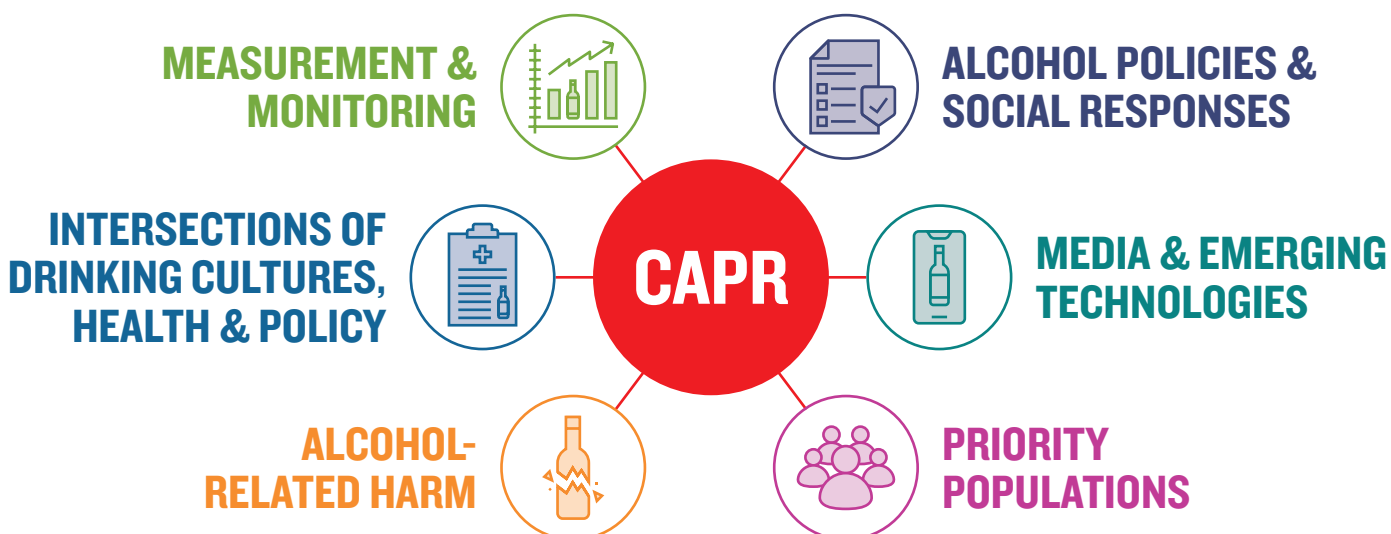
Due to a fundamental conflict of interest, CAPR and its staff do not accept any funding, in-kind support, or have any gainful relationship with industries producing, distributing, or selling alcohol, nicotine, cannabis, or gambling products. This includes salary support, consultancy fees, honoraria, gifts, expert testimony, and travel funding.

OUR AIM

We aim to conduct world-leading alcohol research to build and disseminate the evidence needed for effective public health-oriented alcohol policies.

To achieve this aim, we focus our attention on six streams of research:

- **Measurement and Monitoring:** examining trends and patterns in consumption trends, purchasing and harm, as well as contexts of consumption and predictors of harmful drinking.
- **Intersections of Drinking Cultures, Health and Policy:** health outcomes, social determinants of health and policy contexts.
- **Alcohol-related Harm:** harm from others' drinking, family violence, child abuse and neglect.
- **Alcohol Policies and Social Responses:** taxation, trade agreements, liquor outlets and policy changes.
- **Media and Emerging Technologies:** alcohol exposure in social media and artificial intelligence.
- **Priority Populations:** reducing harms from alcohol and drug use for populations which face systemic inequities.



DIRECTOR'S MESSAGE

Working in alcohol policy research can be frustrating at times. The burden from alcohol use to individuals and entire communities is enormous. Here at the Centre for Alcohol Policy Research, we contribute to the evidence base by unpacking the causes, contexts, and consequences of alcohol use, as well as use of drugs and other harmful commodities. Our research is conducted using national and international data, and ranges through to research requested by community and service providers. We disseminate this evidence to community and service provider partners, and policymakers. Unfortunately, it can be all too easy to forget the harmful nature of alcohol use. One example is the 16-year-old person who was given alcohol at a family Christmas lunch in rural Victoria. Left unsupervised, they continued to drink and died the next day.

Part of the problem is a powerful industry. In Australia, \$100M is spent each year on marketing and selling the benefits of alcohol. Such commercial interests are among the reasons why Australian alcohol policy is not as strong and beneficial as it could be. For example, insufficient policies governing home delivery of alcohol permits companies to deliver alcohol to customers' homes within 30 minutes of an online purchase. Such delivery practices have been shown to, in turn, increase alcohol consumption. Unfortunately, within the current policy framework, it is often impossible to ensure that alcohol is not sold online or delivered to people who are intoxicated or underage. This can have tragic consequences such as the 30-year-old woman who died in a Melbourne suburb in September 2023. Prior to her death, she had placed 98 orders for alcohol within 182 days; 319 items in total. Citing CAPR's research, the Coroner of Victoria expressed concerns about rapid and late-night alcohol delivery services. In line with Alcohol Change Victoria, of which CAPR is a member, the Coroner recommended appropriate regulations to prohibit alcohol home delivery between 10pm and 10am and a minimum delay of two hours between order and dispatch of alcoholic beverages for home delivery. There is also a need for a renewed governmental Alcohol Action Plan including specific timeframes, actions, accountabilities, and public reporting on implementation and evaluation to address alcohol-related harms in Victoria.

CAPR will continue its important work – conducting world-leading research to build and disseminate the evidence needed for effective public health-oriented alcohol policies. As this Annual Report demonstrates, CAPR had another productive year with many highlights and achievements. The outstanding performance of the Priority Populations team has greatly contributed to the Centre being larger than ever before in its 18-year history both in terms of staff size and research income. Overall, there are three key factors to CAPR's success: a dedicated and hard-working team, supportive team culture, and enablers that help us do our work (e.g. via the CAPR Advisory Committee and School of Psychology and Public Health in which we are located). For all of this, I am grateful. Despite the challenges mentioned above, I remain optimistic that it is possible to decrease alcohol-related harm, and I look forward to our future work and impact in this important field.

On a personal note, I was extremely honoured to receive the prestigious Mentor Award from the Australasian Professional Society on Alcohol and other Drugs (APSAD). The Mentor Award recognises an individual who has made an important contribution to mentoring and supporting the career development of clinicians, researchers or students. I have always been passionate about nurturing the next generation of researchers and the La Trobe University environment makes this possible.

PROFESSOR EMMANUEL KUNTSCHE

Director, CAPR, School of Psychology and Public Health,
La Trobe University

HIGHLIGHTS AND ACHIEVEMENTS

NEW GRANTS

CAPR has a long history of securing prestigious and highly competitive grants, and 2024 was no exception.

- The Priority Populations team secured \$12.9M worth of grant funding from multiple sources, including a National Health and Medical Research Council (NHMRC) Ideas Grant in the 2024 round (\$3.9M). This project, “BubSafe”: Co-creating Australia’s first integrated digital health tool to prevent alcohol use during pregnancy among Aboriginal and Torres Strait Islander people’, is led by Kylie Lee, James Conigrave, Scott Wilson, Nicole Hewlett, Teagan Weatherall, Monika Dzikowska, Karen Glover, Natasha Reid, Kirsten Black, Marguerite Tracy, and collaborators.
- The Alcohol-related Harm team secured an Australian Research Council (ARC) Linkage Project in 2024 Round 1 (\$432,405). The project, ‘Critical moments in responses for children affected by family substance use’, is led by Anne-Marie Laslett, Sarah MacLean, Amanda Cooklin, Heng Jiang, Koen Smit, Kylie Lee, James Petty, Diana Egerton-Warburton, Gillian Shorter, Bridget Freisthler, Rebecca Jenkinson, Eleanor Costello, and Michelle Silbert. The strategic partners on the project include the Alcohol and Drug Foundation, Youth Affairs Council of Victoria, Victorian Alcohol and Drug Association, Youth Support and Advocacy Service, Uniting, Australian Human Rights Commission, Monash Health, Queen’s University Belfast, University of Tennessee, Knoxville, and Australian Institute of Family Studies.

LEADERS IN THE FIELD CONTRIBUTING TO POLICY AND COMMUNITY RESOURCES

CAPR is committed to lending its expertise to enhance policy making processes as well as creating resources for researchers, service providers and policy-makers. As the examples below show, CAPR received several national and international requests to share expertise:

POLICY FOCUSED RESOURCES

- Robin Room, Emmanuel Kuntsche, Kylie Lee and Scott Wilson were invited to present on their written submissions to the public hearing held for the House of Representatives Standing Committee on Health, Aged Care and Sport’s *Inquiry into the health impacts of alcohol and other drugs in Australia*. The inquiry is a significant step towards developing recommendations to improve coordination and cooperation across sectors for implementing more effective and equitable policy responses.
- Robin Room was invited to work on a United Nations report on health taxes on problematic commodities and a World Health Organization (WHO) report on state alcohol monopolies as a market control measure. Both seminal documents target macro-level policy levers.
- Anne-Marie Laslett, along with 26 world-leading alcohol scholars, contributed to a WHO monograph: *Empowering public health advocates to navigate alcohol policy challenges: alcohol policy playbook*. The document examines the impact of alcohol and the efficacy of key policies from multiple perspectives including public health and the alcohol industry. It was designed as a resource for policy makers, advocates and public health professionals.

SERVICE PROVISION RESOURCES

- The Priority Populations team was funded by NSW Health to write the second edition of the *Handbook for Aboriginal Alcohol and Drug Work*. This is the only clinical handbook of its kind designed for and by the Aboriginal drug and alcohol workforce.
- The Priority Population team was commissioned to write a review on alcohol consumption among Aboriginal and Torres Strait Islander peoples for the Australian Indigenous Health InfoNet. This will be an easily accessible resource for service providers, policy-makers and community members.

ACADEMIC RESOURCES

- Benjamin Riordan and Emmanuel Kuntsche developed tutorials to make AI tools more accessible to addiction researchers. This includes an open access tutorial in the journal *Addiction*, a chapter in the most recent edition of *The Sage Handbook of Addiction Psychology*, workshops and presentations, and three open access *GoogleColab* notebooks that walk researchers through how to use AI to analyse both text and images.
- Amy Pennay and Gabriel Caluzzi, with international colleagues, prepared and submitted a book manuscript to Routledge titled *Young People, Alcohol and Risk: A Culture of Caution*. This work draws together 10 years of research on declining young people’s drinking in Australia, the UK, and Sweden.

NURTURING A NEW GENERATION OF OUTSTANDING RESEARCHERS IN ALCOHOL POLICY

CAPR is home to 16 PhD students.

- Supervised by Benjamin Riordan and Emmanuel Kuntsche, Jack Delmenico commenced his PhD in November. Jack’s thesis will estimate the prevalence of social media posts including alcohol from Australia’s top athletes and the impact they can have on alcohol use.
- Christopher Cheers passed his PhD in June. Chris’s thesis titled ‘*The “Sober Eye”: Examining Attitudes Towards Non-Drinkers*’ included four peer reviewed journal articles. Chris was supervised by CAPR’s Sarah Callinan and Amy Pennay, and Xochitl de la Piedad Garcia from Australian Catholic University.

SHARING RESEARCH KNOWLEDGE

Building connections with international and Australian-based researchers and sharing new knowledge is core business for CAPR.

Benjamin Riordan coordinated and hosted the monthly CAPR Forum series, which showcased national and international research. Guest presenters were from all corners of the globe including: United States of America (Nadine Mastrole, Binghamton University), United Kingdom (Ellen McGrane and Esther Moore, University of Sheffield), New Zealand (Damian Scarf, University of Otago and University of Canterbury; Taylor Winter, University of Canterbury), Switzerland (Nicolas Bertholet, Lausanne University Hospital), as well as experts from La Trobe University.

CAPR authored four articles in *The Conversation* – three for the Australian edition, and one for the UK edition. Special mention to Maree Patsouras (PhD student) who was lead author on two of these articles.

CAPR staff authored 123 peer reviewed journal articles (40% in Q1 top ranked journals).

SNAPSHOT OF RESEARCH OUTPUTS

PUBLICATIONS = 130

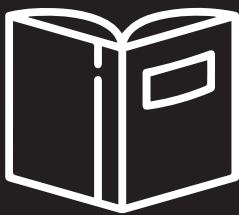
123

Peer reviewed
journal articles
(includes online early view articles)



2

Book chapters



4

Reports



1

PhD dissertation



PEOPLE = 79

22

Full-time and
part-time staff



16

PhD students



11

Casual staff



25

Honorary staff
(national = 17; international = 8)



5

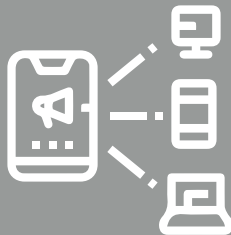
Affiliate researchers
at La Trobe
University



MEDIA = 107

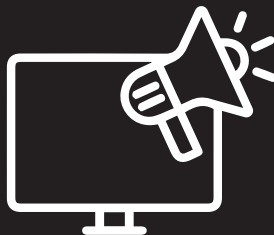
54

Media releases
and stories



52

Media
appearances



1

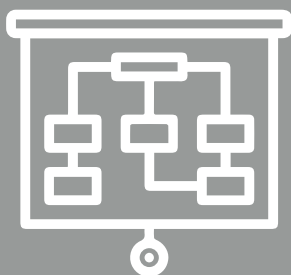
Podcast



PRESENTATIONS = 62

13

Presentations at
seminars and meetings



41

Conference
presentations



8

Workshops and
other activities



SCIENTIFIC CONTRIBUTIONS AND COLLABORATIONS = 136

31

Editorial appointments



51

National collaborators
(count is for institutions, not individuals)



54

International collaborators
(count is for institutions, not individuals)



SUMMARY OF FUNDING SOURCES

2.1%

La Trobe University

5.8%

Category 2:
Other public service R & D

1.3%

Category 3:
Industry and other R & D

TOTAL FUNDING
\$6,145,853

90.4%

Category 1:
Australian competitive grants R & D

Category 1, 2 and 3 is per the Higher Education Research Data Collection (HERDC)

CAPR ADVISORY COMMITTEE

Guided by La Trobe University's Research Centre Policy, CAPR's Advisory Committee of stakeholders oversees CAPR's activities and gives independent guidance and support to help the Centre meet its aims. CAPR is grateful to the members for their time and dedication.

CHAIR

Professor Rob Moodie

Deputy Head of School and Professor in Public Health,
School of Population and Global Health, University of Melbourne

LA TROBE UNIVERSITY

Professor Monica Thielking

Dean and Head of School, Psychology and Public Health

Professor Richard Gray

Theme Lead, Healthy People, Families and Communities (title during 2024);
University Human Ethics Committee; Deputy Vice-Chancellor,
Research and Industry Engagement Office (current title)

Margo Powell

Chief Advancement Officer, Office of Alumni and Advancement

Professor Adam Bourne

Director, Australian Research Centre in Sex, Health and Society

EXTERNAL EXPERT

Professor Alison Ritter

Director, Drug Policy Modelling Program at the Social Policy Research
Centre, University of New South Wales

CAPR

Professor Emmanuel Kuntsche

Director

Distinguished Professor Robin Room

Founding Director

Professor Kylie Lee

Professor of Public Health and head of the Priority Populations
research stream

STAFF & STUDENTS

PROFESSOR AND DIRECTOR

Emmanuel Kuntsche

Bachelor of Arts (Psychology), Bachelor of Arts (Sociology), Master of Science (Psychology), University of Jena, Germany; PhD (Health Sciences), Maastricht University, the Netherlands; Habilitation (Psychology), University of Bamberg, Germany

Emmanuel is recognised as a world-leading scholar in alcohol-related cognitions (expectancies and motives) among young people including pre-school children. He has pioneered the use of mobile phones and artificial intelligence in alcohol research.

[SEE PROFILE →](#)

DISTINGUISHED PROFESSOR AND FOUNDED DIRECTOR

Robin Room

Bachelor of Arts (English), Princeton, United States; Master of Arts (English), Master of Arts (Sociology), PhD (Sociology), University of California, Berkeley, United States

Robin is among the most respected and highly cited alcohol researchers in the world. His areas of expertise include: social epidemiology of alcohol, drugs, gambling; policy impact studies (impact of alcohol, drugs, gambling controls); legalisation and control of legal markets for attractive but problematic commodities; and social and cultural studies of alcohol. He also studies the interplay of other addictive and problematic commodities with alcohol in terms of behaviour and policies on them. He has a broad involvement in multinational studies of drinking and harm, including alcohol's harm to others, and in the analysis and governance of alcohol in an international context, including a long-term role as an advisor to the WHO.

[SEE PROFILE →](#)

Below: CAPR team at the La Trobe University City Campus



TRACEY BANIVANUA MAR FELLOW AND DEPUTY DIRECTOR OF CAPR

Amy Pennay

Bachelor of Arts (Honours), University of Melbourne; PhD, Curtin University of Technology

Amy is a mixed methods researcher working at the nexus of sociology and public health, investigating how social and cultural factors influence drinking practices, policy implementation and success, and health outcomes. Her recent work has focused on youth drinking practices, (sub)cultures of drinking, and intersections of drinking and policy with social determinants such as gender, class, place and sexuality.

Amy leads CAPR's Intersections of Drinking Cultures, Health, and Policy research stream. She was appointed as deputy director of CAPR in 2023.

[SEE PROFILE →](#)

PROFESSOR OF PUBLIC HEALTH

Kylie Lee

Bachelor of Music (Honours), University of Melbourne; PhD, James Cook University

Kylie is a mixed methods researcher working to conduct research that meshes with health service and community priorities. Her recent work has focused on creating appropriate methods to measure alcohol use among Aboriginal and Torres Strait Islander peoples and supporting community responses. Kylie and her team created and rolled-out an innovative digital health tool program that includes the *Grog Survey App*. Kylie is lead editor on a clinical textbook requested and widely used by Aboriginal and Torres Strait Islander alcohol and other drug workers nationally.

Kylie leads CAPR's Priority Populations research stream.

[SEE PROFILE →](#)

NHMRC EMERGING LEADERSHIP FELLOW AND PRINCIPAL RESEARCH FELLOW

Anne-Marie Laslett

Bachelor of Dental Science, Master of Dental Science, University of Melbourne; Master of Public Health, Monash University; PhD, University of Melbourne

Anne-Marie has worked in public health on alcohol and drug epidemiology for over two decades and was awarded her PhD in population and global health in 2014. She leads a program of international and national research on alcohol's harm to others, including family violence and child maltreatment. She applies her expertise to analysing surveys and response agency data on harm from others' drinking that occurs at home, in the workplace, and in public. She currently holds a NHMRC Emerging Leader Fellowship.

Anne-Marie leads CAPR's Alcohol-related Harm research stream.

[SEE PROFILE →](#)



Above: Emmanuel and Anne-Marie, the La Trobe 5km run/walk



Above: Robin in the La Trobe nature reserve

PRINCIPAL RESEARCH FELLOW

Sarah Callinan

Bachelor of Arts, Monash University; Psychology (Honours), University of Tasmania; PhD, Swinburne University

Sarah has a PhD in educational psychology and specialises in survey research. Her statistical expertise in analysing complex datasets is critical to measuring and understanding alcohol consumption trends and related harms in Australia and internationally. Her recent work has focused on alcohol consumption in the home and survey measurement of consumption and harm. She provides scholarly leadership on topics such as survey research methods, alcohol pricing, trends in consumption and alcohol's harm to others.

Sarah leads CAPR's Measurement and Monitoring research stream.

[SEE PROFILE →](#)

SENIOR RESEARCH FELLOW AND SENIOR LECTURER

Heng Jiang

Master of Finance and Economics, Royal Melbourne Institute of Technology (RMIT) University; PhD, Deakin University

Heng has a PhD in applied economics. He is highly skilled in quantitative analysis, and his areas of expertise include health economic analyses of alcohol and tobacco use, risky behaviours, and non-communicable diseases and injuries. He leads CAPR research on estimating costs of harm from alcohol and impacts of policy or program interventions on alcohol, tobacco and drug use, and related social and health issues.

Heng leads CAPR's Alcohol Policies and Social Responses research stream, which covers taxation, trade agreements, liquor outlets and policy changes.

[SEE PROFILE →](#)

ARC DECRA FELLOW AND SENIOR RESEARCH FELLOW

Benjamin Riordan

Bachelor of Arts, Master of Science, PhD, University of Otago, Aotearoa, New Zealand

Benjamin has a PhD in psychology and specialises in using new and emerging technologies to understand and intervene those who drink. His most recent work focuses on how alcohol and other drugs are presented in the media, what impact exposure to alcohol-related media content is, and how we can use media for intervention or prevention. To answer these questions, he uses new and emerging methods and technology like breathalysers, transdermal monitors, ecological momentary assessments and artificial intelligence. Benjamin commenced his ARC Discovery Early Career Researcher Award (DECRA) in 2023.

Benjamin leads CAPR's Media and Emerging Technologies research stream.

[SEE PROFILE →](#)

POSTDOCTORAL RESEARCH FELLOWS

Mustafa Al Ansari

Bachelor of Arts and Science (Honours 1), Arabic, Middle Eastern and Islamic Studies/History and Philosophy of Science, PhD, University of Sydney

Mustafa is a global health researcher currently focused on alcohol use among priority populations, particularly First Nations Australians. He is interested in the cultural influences on health, including attitudes towards alcohol among refugees, diaspora communities, and traditionally abstinent cultures. Mustafa has developed strong local and international collaborations, including research on health at the Arbreen pilgrimage in Iraq, the world's largest annual mass gathering. His research aims to inform policy and support healthier communities through culturally responsive approaches.

[SEE PROFILE →](#)

Gabriel Caluzzi

Bachelor of Arts (Honours), University of Melbourne; PhD, La Trobe University

Gabriel is a primarily qualitative researcher. His research draws on the sociology of health and the sociology of youth to understand how drug and alcohol practices among young people are informed by sociocultural context. His recent work has focused on the needs of young people engaged with drug and alcohol services, shifts in youth drinking culture and drinking practices among midlife women.

[SEE PROFILE →](#)

James Conigrave

Bachelor of Arts (Psychology) and Bachelor of Health, Macquarie University; Master of Public Health, University of Sydney; PhD, Australian Catholic University

James is a quantitative researcher with a primary focus on measuring risk-taking behaviours among priority populations, particularly Aboriginal and Torres Strait Islander Australians. His current research applies Self-Determination Theory to better understand, predict, and prevent risk-taking behaviours. James specialises in R, meta-analysis, and biostatistics. He is passionate about reproducible research and developing software packages that enable researchers to communicate their findings clearly and efficiently.

James is deputy head of the Priority Populations research stream.

[SEE PROFILE →](#)

Megan Cook

Bachelor of Arts (Honours), Deakin University; PhD, La Trobe University

Operating from an interdisciplinary psychological and sociological approach to knowledge acquisition, Megan's PhD extends our understanding of what young children know about alcohol. Megan was the Inaugural Hastings postdoctoral research fellow at the Institute for Social Marketing and Health at the University of Stirling (2022–2024), where she was involved in two large national licensing studies. She also gained experience facilitating community engagement. As a postdoctoral research fellow at CAPR, Megan contributes to the broader policy work of the Centre and has an interest in parents' alcohol consumption practices, alcohol licensing, gender, climate change, and news media analysis of representations of alcohol.

[SEE PROFILE →](#)

Koen Smit

Bachelor of Education, HAN (Hogeschool van Arnhem en Nijmegen) University of Applied Sciences, the Netherlands; Bachelor of Science, Master of Science, PhD, Radboud University, the Netherlands

Koen is a quantitative researcher in psychology and public health. He completed his PhD in the Netherlands, where he examined parenting roles and alcohol use. As a postdoctoral fellow, he currently investigates the impact of alcohol within the child protection system as part of the Alcohol's Harms to Others program. In addition, Koen's research focuses on resilience and other protective factors in relation to alcohol use, aiming to shift the focus from risk to strength-based approaches.

[SEE PROFILE →](#)

Van Nguyen

Bachelor of Arts (English Linguistics and Literature), Ho Chi Minh City University of Social Sciences and Humanities; Master of Arts (Applied Linguistics), PhD, University of Melbourne

Van has a research background in applied linguistics, discourse analysis and qualitative research. She has experience working in interdisciplinary research projects, bringing together qualitative and linguistic methodologies. Her research interests are multimodal discourse analysis, qualitative research, risk discourses and communication of risk, particularly of alcohol-related risks to inform policies, programs and initiatives.

[SEE PROFILE →](#)

Teagan Weatherall

Graduate Diploma in Indigenous Health Promotion, PhD, University of Sydney

Teagan is an Anaiwan and Kamilaroi woman and a quantitative researcher focused on working with community to better understand alcohol use among Aboriginal and Torres Strait Islander peoples. Her work is driven by a commitment to better understand how the ongoing impacts of historical trauma, colonisation and systemic inequities continue to affect the health and wellbeing of Aboriginal and Torres Strait Islander peoples. Her PhD focused on how alcohol dependence may be interpreted differently among Indigenous Peoples. Teagan's practical skills include analysing large datasets and multi-level logistic modelling using R.

[SEE PROFILE →](#)

RESEARCH OFFICERS

Nicole Hewlett is a Palawa woman with a Bachelor of Psychological Science (Hons) and Master of Public Health. Part of the Priority Populations research stream, Nic has 10 years of knowledge translation experience using strengths-based, healing-informed, culture-centred approaches to benefit Aboriginal and Torres Strait Islander communities. Nic sits on the Australian Fetal Alcohol Spectrum Disorder Guidelines Development Group and is completing a PhD on development and knowledge translation of Australia's first FASD Framework. Nic co-authored "Learning from 50 years of Aboriginal Alcohol Programs: Beating the Grog in Australia" and was a member of the NHMRC Alcohol Working Group, appointed to update Australia's drinking guidelines.

[SEE PROFILE →](#)

Jade Rintala is a psychology honours graduate interested in the interaction of AOD use, aggression and interpersonal violence. Her research focuses primarily on service responses to alcohol-related harm, including the trajectories of children affected by caregiver alcohol-use within the child protection system.

Erin Santamaria is a psychology honours graduate interested in pursuing clinical psychology. Her research interests are broad and she has worked on a number of projects focused on how alcohol-related phenomenon are discussed on social media sites.

PHD STUDENTS

Gedefaw Alen*

Dan Anderson-Luxford*

Natalie Cerocchi

Christopher Cheers

Jack Delmenico

Simon D'Aquino

Filip Djordjevic

Rowan Dowling

Cassandra Hopkins*

Klaudia Kepa*

Yvette Mojica-Perez*

Maree Patsouras*

Amany Sabry Basaly Tanyos

Samatha Salim

Alexandra Torney*

Bree Willoughby*

**Also held a research officer (fixed term or casual) position with CAPR.*

ADMINISTRATION & RESEARCH SUPPORT

Summer Loggins is a Bunjalung and Gadigal woman who is an Administrative and Research Support Assistant with the Priority Populations research stream. She has previously worked in the Aboriginal drug and alcohol sector for the Aboriginal Medical Service in Redfern.

Janette Mugavin provides general administrative support to the CAPR team. She has held various research roles before transitioning to centre administration.

Taleah Reynolds is an Anaiwan woman who leads the Priority Populations research stream's Administrative and Research Support. She completed a Graduate Diploma in Indigenous Health Promotion, has contributed original artwork to the *Grog App* and *Drug App*, and has worked in education and housing for a number of years in Sydney.

Johnson Yuen provides administrative support for the Priority Populations research stream. He has worked in administration and project management for a number of years.

CASUAL STAFF

Basma Al-Ansari

Madeline Nibali

Robert Assan

Puong Nga Do

Minh Dinh

Nikita Potemkin

Jingda Du

Miro Saunders

Lani Haddad

Catherine Zheng

Ash Hall

AFFILIATE RESEARCHERS

Robyn Dwyer

Lecturer, Department of Public Health, School of Psychology and Public Health, La Trobe University

Jessica Ison

Senior Lecturer and Deputy Director, ReGen Research Group, La Trobe Rural Health School, La Trobe University

Sandra Kuntsche

Research Program Manager, Associate Professor, Family Therapy and Systemic Research, The Bouverie Centre, La Trobe University

Sarah MacLean

Professor, Social Work and Social Policy, School of Allied Health, Human Services and Sport, La Trobe University

Mary Walker

Lecturer, Department of Politics, Media, and Philosophy, School of Humanities and Social Sciences, La Trobe University

HONORARY RESEARCHERS

Lynette Bullen

Senior Drug and Alcohol Worker, Involuntary Drug and Alcohol Treatment Unit, Orange Health Service, Bloomfield Hospital, Western New South Wales Local Health District, New South Wales, Australia

Hannah Calverley

Manager, Research and Evaluation, Life Saving Victoria, Victoria, Australia

Andrew Dawson

Director Clinical Toxicology and Pharmacology, Royal Prince Alfred Hospital, Sydney; Director National Poisons Register, Royal Prince Alfred Hospital, Sydney, New South Wales, Australia

Monika Dzidowska

Research Fellow, University of Sydney, New South Wales, Australia

Michelle Fitts

Senior Research Fellow, Western Sydney University, New South Wales, Australia

Noel Hayman

Clinical Director, Centre of Excellence in Aboriginal and Torres Strait Islander Primary Healthcare, Inala Indigenous Health Service, Queensland, Australia

Craig Holloway

Project Manager, Office of the Executive, Victorian Aboriginal Health Service, Victoria, Australia

Isabella (Bella) Ingram

Vice Chancellor's Postdoctoral Research Fellow, Meaningful Outcomes in Substance Use Treatment, NHMRC CRE, University of Wollongong, New South Wales, Australia

Harindra Jayasekara

Senior Research Fellow, Cancer Epidemiology Division, Cancer Council Victoria; Honorary Fellow, Centre for Epidemiology and Biostatistics Research, University of Melbourne, Victoria, Australia

Florian Labhart

Head of Project, Addiction Switzerland, Switzerland

Michael Livingston

Associate Professor, Alcohol Policy and Strategies, Curtin University, Western Australia, Australia

Jennifer (Jen) Merrill

Associate Professor, Research Scholar, Department of Behavioral and Social Sciences, Brown University, United States of America

Roisin O'Connor

Professor, Department of Psychology; Director, Young Adult and Alcohol Research Lab; Core Member, Centre for Clinical Research in Health at Concordia University, Canada

Jimmy Perry

Aboriginal counsellor; Aboriginal Drug and Alcohol Council South Australia Aboriginal Corporation, South Australia, Australia

Gemma Purcell-Khodr

Research Fellow, University of Sydney, New South Wales, Australia

Jonas Raninen

Researcher, Swedish Council for Information on Alcohol and Other Drugs; Affiliated Researcher, Department of Clinical Neuroscience, Karolinska Institutet, Stockholm, Sweden; Affiliated Researcher, School of Social Sciences, Södertörn University, Sweden

Damien Scarf

Associate Professor, Department of Psychology, University of Otago, New Zealand

Annalee Stearne

Research Fellow, Telethon Kids Institute, The Kids Research Institute Australia, University of Western Australia, Western Australia, Australia

Johannes Thrul

Associate Professor, Department of Mental Health, Bloomberg School of Public Health, John Hopkins University, Baltimore, MD, United States of America

Marguerite Tracy

Senior Research Fellow, Faculty of Medicine and Health, University of Sydney, New South Wales, Australia

Rose Marie Ward

Vice Provost of Graduate Education and Dean of the Graduate College, University of Cincinnati, United States of America

Claire Wilkinson

NHMRC Early Career Research Fellow and Senior Research Fellow, Drug Policy Modelling Program, Social Policy Research Centre, University of New South Wales, New South Wales, Australia

Scott Wilson

Chief Executive Officer, Aboriginal Drug and Alcohol Council (South Australia) Aboriginal Corporation (ADAC), Australia

Taylor Winter

Senior Lecturer, University of Canterbury's School of Mathematics and Statistics Department, Aotearoa New Zealand

Cassandra Wright

Senior Research Fellow, Charles Darwin University, Northern Territory, Australia

MEASUREMENT & MONITORING RESEARCH STREAM

STRATEGIC LEAD: SARAH CALLINAN

This research stream broadly aims to monitor and analyse quantitative trends in alcohol consumption and harm. We use a range of data sources to examine trends and patterns in consumption, purchasing and harm as well as contexts of consumption and predictors of harmful drinking.

All of this work is dependent on valid and reliable measurement of alcohol consumption, harms and all other related variables. As such we also focus on the accurate measurement of alcohol-related variables.

SELECTED RESEARCH PROJECTS

FARE distribution of drinkers: An examination of the distribution of alcohol consumption in Australia

Foundation for Alcohol Research and Education

2024 – 2025

Investigators: Megan Cook, Yvette Mojica-Perez, Klaudia Kepa, Sarah Callinan

Analysis of alcohol industry submissions to the ‘Inquiry into the health impacts of alcohol and other drugs in Australia’

Foundation for Alcohol Research and Education

2024

Investigators: Megan Cook, Dan Anderson-Luxford

Review of “every moment matters” campaign report

Foundation for Alcohol Research and Education

2024

Investigator: Sarah Callinan



PHD STUDENTS AND PROJECTS

Attitude towards non-drinkers in Australia and the relationship to problematic alcohol use

Christopher Cheers, supervised by Sarah Callinan, Amy Pennay, Xochitl de la Piedad Garcia (Australian Catholic University)

The role of low-cost alcoholic beverages on drinking trends in Australia

Alexandra Torney, supervised by Sarah Callinan, Robin Room

Understanding heavy drinking among young people in Australia (quantitative component)

Natalie Cerocchi, supervised by Sarah Callinan, Amy Pennay, John Holmes (University of Sheffield)

Understanding the short- and long-term impacts of COVID-19 on alcohol consumption

Yvette Mojica-Perez, supervised by Sarah Callinan, Amy Pennay, Michael Livingston (Curtin University)

The longitudinal relationship between alcohol consumption and anxiety

Simon D’Aquino, supervised by Sarah Callinan, Benjamin Riordan, Megan Cook



RESEARCH DISSEMINATION

SELECTED ACADEMIC ARTICLES

Cheers, C., Pennay, A., de la Piedad Garcia, X., & Callinan, S. (2024). Development and validation of the Cheers Attitudes towards Non-drinkers Scale (CANS). *Journal of Health Psychology*, 29(10): 1101–1114. <https://doi.org/10.1177/13591053231220519>

Coomber, K., Baldwin, R., Wilson, C., McDonald, L., Taylor, N., Callinan, S., Wilkinson, C., Toubourou, J.W., Chikritzhs, T., & Miller, P.G. (2024). Test purchasing of same-day and rapid online alcohol home delivery in two Australian jurisdictions. *Journal of Studies on Alcohol and Drugs*, 85(6): 839–844. <https://doi.org/10.15288/jsad.23-00223>

D'Aquino, S., & Callinan, S. (2024). Drinking to cope as a mediator of the relationship between stress and alcohol outcomes. *Drugs: Education, Prevention and Policy*, 31(5): 516–523. <https://doi.org/10.1080/09687637.2023.2236291>

Mojica-Perez, Y., Livingston, M., Pennay, A., & Callinan, S. (2024). Examining how the first year of the COVID-19 pandemic affected alcohol use in different socio-demographic groups in an Australian representative longitudinal sample. *Addiction*, 119(12): 2176–2184. <https://doi.org/10.1111/add.16651>

Torney, A., Room, R., Jiang, H., Huckle, T., Holmes, J., & Callinan, S. (2024). Where do high-risk drinking occasions occur more often? A cross-sectional, cross-country study. *Drug and Alcohol Review*, 43(5): 1172–1177. <https://doi.org/10.1111/dar.13844>

Raninen, J., Callinan, S., Gmel, G., Brunborg, G.S., & Karlsson, P. (2024). Age of onset and DSM-5 alcohol use disorder in late adolescence – A cohort study from Sweden. *Journal of Adolescent Health*, 75(4): 620–625. <https://doi.org/10.1016/j.jadohealth.2024.06.007>

SELECTED PRESENTATIONS

Caluzzi, G., Kepa, K., Torney, A., Livingston, M., Mojica-Perez, Y., Taylor, N., Callinan, S., & Pennay, A. (2024, 27–31 May). A qualitative analysis of alcohol purchasing across different socio-economic areas in Australia. 49th Alcohol Epidemiology Symposium of the Kettil Bruun Society. Perth, Australia.

Mojica-Perez, Y., Livingston, M., Pennay, A., & Callinan, S. (2024, 27–31 May). What happened to alcohol consumption in Australia during the COVID-19 pandemic? Comparing alcohol consumption measures. 49th Alcohol Epidemiology Symposium of the Kettil Bruun Society. Perth, Australia.

Mojica-Perez, Y. (2024, 16 April). Understanding the short and long term impacts of COVID-19 on alcohol consumption; Pre-PhD submission presentation. *School of Psychology and Public Health Research Lunchbox Seminar, La Trobe University*. Melbourne, Australia.

Torney, A. (2024, 10 December). Exploring the relationship between pricing and alcohol consumption in Australia, with considerations for public health and policy; Pre-PhD submission presentation. *School of Psychology and Public Health Research Lunchbox Seminar, La Trobe University*. Melbourne, Australia.

INTERSECTIONS OF DRINKING CULTURES, HEALTH & POLICY RESEARCH STREAM

STRATEGIC LEAD: AMY PENNAY

This research stream aims to understand how cultures of drinking intersect with health outcomes, social determinants of health and policy contexts.

We explore historical and contemporary shifts in cultures of drinking, investigate heavy and light drinking social worlds, and seek to understand the broader contexts (e.g., structural inequalities, generational factors) in which drinking and harms occur.

Not all policies affect individuals in the same way, and not all policies that work for one generation will work for another. This research stream recognises the need for nuance in policy making. We focus our attention on 'what works' for reducing drinking and harm in different groups, but also how policies may produce problems, or exacerbate social and health inequalities.

SELECTED RESEARCH PROJECTS

Differences in how men and women are studied in alcohol research: A systematic review

La Trobe University ABC Investment Scheme
2023 – 2025

Investigators: Megan Cook, Sarah MacLean, Amanda Cooklin, Amy Pennay, Benjamin Riordan, Gabriel Caluzzi, Sarah Callinan, Alex Torney

From the mainstream to the margins: Investigating the processes and implications of the de-normalisation of heavy drinking for underage young people in Australia

Australian Research Council Discovery Project
2023 – 2026

Investigators: Amy Pennay, Sarah Callinan, Gabriel Caluzzi, Klaudia Kepa, Natalie Cerocchi, Jukka Törrönen (Stockholm University), John Holmes (University of Sheffield)

Mothers' little helper: The link between alcohol use and daily stressors in the specific risk group of working mothers

Australian Research Council Discovery Project
2021 – 2024

Investigators: Sandra Kuntsche, Emmanuel Kuntsche

Wider team: Gabriel Caluzzi, Cassandra Wright (Menzies School of Health Research)

Understanding heavy alcohol consumption cultures among nurses and lawyers and investigating frames for intervention

Australian Research Council Linkage Project (with partner funding from the Victorian Health Promotion Foundation)
2020 – 2024

Investigators: Robyn Dwyer, Amy Pennay, Michael Savic (Monash University), Sarah MacLean, Rowan Ogeil (Monash University), Dan Lubman (Monash University), Robin Room

Understanding socioeconomic inequalities in alcohol use and harm

Tracey Banivanua Mar Fellowship, La Trobe University

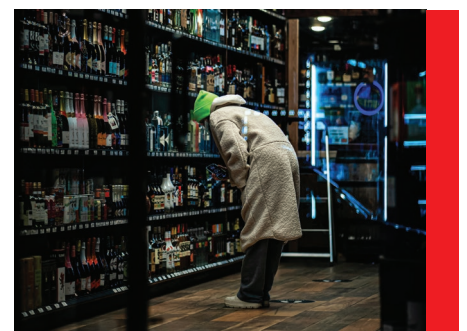
2023 – 2026

Investigator: Amy Pennay

Understanding socioeconomic inequalities in alcohol use, purchasing and harm in Victoria

Victorian Health Promotion Foundation
2023 – 2024

Investigators: Amy Pennay, Sarah Callinan, Michael Livingston (Curtin University), Yvette Mojica-Perez, Alexandra Torney, Gabriel Caluzzi, Nicholas Taylor (Curtin University), Klaudia Kepa



PHD STUDENTS AND PROJECTS

A comparative study of community influence on alcohol licencing in Australia and the United Kingdom

Filip Djordjevic, supervised by Robyn Dwyer, Claire Wilkinson (University of New South Wales), Joanne Reynolds (Sheffield Hallam University), Paul Hickman (Sheffield Hallam University)

Mother's little helper: Alcohol use in working mothers

Maree Patsouras, supervised by Sandra Kuntsche, Gabriel Caluzzi, Cassandra Wright (Menzies School of Health Research), Emmanuel Kuntsche

Understanding heavy drinking among young people in Australia (qualitative component)

Klaudia Kepa, supervised by Amy Pennay, Gabriel Caluzzi, Jukka Törrönen (Stockholm University)

RESEARCH DISSEMINATION

SELECTED ACADEMIC ARTICLES

Caluzzi, G., Cook, M., Patsouras, M., Wright, C.J.C., Kuntsche, E., & Kuntsche, S. (2024). Uncorking the 'wine mum': Exploring the complexity of Australian women's everyday lives and drinking practices. *International Journal of Drug Policy*, 134(December, 104637). <https://doi.org/10.1016/j.drugpo.2024.104637>

Cook, M., Critchlow, N., O'Donnell, R., & MacLean, S. (2024). Alcohol's contribution to climate change and other environmental degradation: A call for research. *Health Promotion International*, 39(1): daae004. <https://doi.org/10.1093/heapro/daae004>

Grant, R., Power, J., Pennay, A., McNair, R., Mooney-Somers, J., & Bourne, A. (2024) 'All the dykes I know drink beer': Sexuality and gender performance through alcohol consumption among lesbian, bisexual, and queer women in Australia. *Social Science and Medicine*, 361(November, 117358). <https://doi.org/10.1016/j.socscimed.2024.117358>

MacLean, S., Caluzzi, G., Cook, M., Room, R., & Callinan, S. (2024). Drinking alcohol at home feels different from drinking in public places: A qualitative study of midlife Australians. *Health and Place*, 86(March, 103179). <https://doi.org/10.1016/j.healthplace.2024.103179>

Patsouras, M., Caluzzi, G., Wright, C.J.C., Kuntsche, E., & Kuntsche, S. (2024). 'We were all stuffed.' Did the Australian COVID-19 lockdowns exacerbate role-specific stress and alcohol use among working mothers? A qualitative analysis. *Drugs: Education, Prevention and Policy*. Published online: 22 Feb 2024 (Latest articles). <https://doi.org/10.1080/09687637.2023.2299392>

SELECTED PRESENTATIONS

Kepa, K. (2024, 10 September). Understanding heavy drinking among young people in Australia; PhD confirmation. *School of Psychology and Public Health Research Lunchbox Seminar*, La Trobe University. Melbourne, Australia.

Patsouras, M. (2024, 8 October). 'Mother's little helper': Understanding alcohol drinking practices and meanings among working mothers; PhD mid-candidature. *School of Psychology and Public Health Research Lunchbox Seminar*, La Trobe University. Melbourne, Australia.

Pennay, A. (2024, 27-31 May). Biography, age and temporality: understanding shifts in alcohol consumption over time among non- and light-drinking young people. *49th Alcohol Epidemiology Symposium of the Kettil Bruun Society*. Perth, Australia.

ALCOHOL-RELATED HARM RESEARCH STREAM

STRATEGIC LEAD: ANNE-MARIE LASLETT

This research stream focuses on the health and social harms related to alcohol use, including harm from others' drinking, family violence, child abuse and neglect. Our key objectives are to build state-of-the-art national estimates of alcohol's harm to others (AHTO), to better understand and address precipitants of AHTO, and to compare findings with those in other countries in Asia, Europe and the Americas. We will synthesise these findings and consider the national contexts and policies affecting AHTO, including national and international service response systems (emergency rooms, police, family violence services etc.). This stream of research informs local and global alcohol policies and service development.

SELECTED RESEARCH PROJECTS

Alcohol's harms to others: Patterns, costs, disparities and precipitants

Australian Research Council Linkage Project (with partner funding from Foundation for Alcohol Research and Education and Australian Rechabite Foundation)
2021 – 2025

Investigators: Anne-Marie Laslett, Robin Room, Sandra Kuntsche, Heng Jiang, Robyn Dwyer, Chris Doran (Central Queensland University), Diana Edgerton-Warburton (Monash Health)

Wider team: Dan Anderson-Luxford, Bree Willoughby, Koen Smit, Amany Tanyos, Cassandra Hopkins

Construction of alcohol-related risks and harms in public health advertising against underage drinking

Australian Rechabite Foundation
2023 – 2025

Investigators: Anne-Marie Laslett, Van Nguyen, Robyn Dwyer

Examining the role of harmful carer alcohol use and family violence on child protection outcomes

Care Economy Research Institute, La Trobe University
2024 – 2025

Investigators: Koen Smit, Anne-Marie Laslett, Sarah MacLean, Jade Rintala

Harmful alcohol use and child protection involvement: Examining the role of parental drinking and alcohol outlet density. A child protection analysis

Australian Rechabite Foundation
2023 – 2025

Investigators: Koen Smit, Anne-Marie Laslett
Wider team: Heng Jiang, Gedefaw Diress Allen, Benjamin Riordan, Cassandra Hopkins

Researching an all-of-family program in family violence and substance misuse

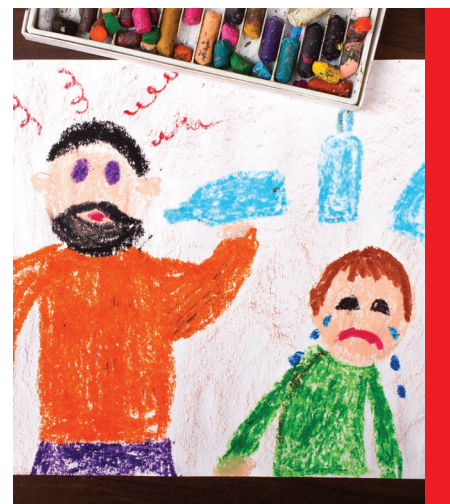
Australian Research Council Linkage Project
2021 – 2025

Investigators: Cathy Humphreys (University of Melbourne), Anne-Marie Laslett, Margaret Kertesz (University of Melbourne), Menka Tsantefski (Griffith University), Sarah Gruner (Department of Families, Fairness and Housing), Nicole Artico (Kids First Australia), Stefan Gruenert (Odyssey House, Victoria), Katreena Scott (University of Western Ontario)

Secondary analysis of data from the Victorian Population Gambling and Health Study (2018–19) to explore the relationship between alcohol use and gambling participation and their impact on associated harms

Victorian Responsible Gambling Foundation
2024 – 2025

Investigators: Anne-Marie Laslett, Koen Smit, Heng Jiang, Sarah MacLean, Robin Room



Strengthening networks and technical capacity for alcohol policy development project: Alcohol's harm to women and children from men's drinking and policy responses

Thai Health Promotion Foundation (ThaiHealth) via the International Health Policy Program Foundation
2023 – 2025

Investigators: Anne-Marie Laslett, Robin Room, Cassandra Hopkins, Bree Willoughby, Amany Tanyos, Mary Walker, Ingrid Wilson (Singapore Institute of Technology), Leane Ramsoomar (Medical Research Council, South Africa), Katherine Graham (University of Toronto), Siri Håvås Haugland (University of Agder), Tom Greenfield (Public Health Institute, USA), Ilona Tamutiene (Vytautas Magnus University), Siri Hettige (University of Colombo), Katherine Karriker-Jaffe (RTI International, USA), Natalie Blackburn (Berkeley)

Understanding, modelling and reducing alcohol's harm to others

National Health and Medical Research Council Investigator Grant – Early Leadership
2023 – 2027

Investigator: Anne-Marie Laslett

Wider team: Robin Room, Heng Jiang, Koen Smit, Bree Willoughby, Yvette Mojica-Perez, Cassandra Hopkins, Amany Tanyos, Jade Rintala, Megan Cook

Understanding and reducing harm to children from men's drinking: Care experience, delivery and policy

Care Economy Research Institute, La Trobe University
2024 – 2025

Investigators: Cassandra Hopkins, Anne-Marie Laslett, Siri Håvås Haugland (University of Agder)

PHD STUDENTS AND PROJECTS

Alcohol's harm to children and families in Australia: A mixed methods approach

Cassandra Hopkins, supervised by Anne-Marie Laslett, Robyn Dwyer, Sandra Kuntsche

Exploring the intersections of alcohol and intimate partner violence and related harms: A comprehensive analysis

Amany Sabry Basaly Tanyos, supervised by Anne-Marie Laslett, Heng Jiang, Rebecca Jenkinson (Australian Institute of Family Studies), Sarah MacLean

Masculinity and intimate partner violence: What role does alcohol use play?

Bree Willoughby, supervised by Anne-Marie Laslett, Koen Smit, Gail Gilchrist (King's College London), Ingrid Wilson (Singapore Institute of Technology)

RESEARCH DISSEMINATION

SELECTED ACADEMIC ARTICLES

Hopkins, C., Kuntsche, S., Dwyer, R., Anderson-Luxford, D., & Laslett, A.-M. (2024). Harm to children from others' drinking: A survey of caregivers in Australia. *Addiction*, 119(11): 1956–1963.
<https://doi.org/10.1111/add.16637>

Laslett, A.-M., Anderson-Luxford, D., Willoughby, B., Room, R., Doran, C., Egerton-Warburton, D., Jenkinson, R., Smit, K., & Jiang, H. (2024). Harm from the drinking of people you know: A range of effects from different relationships. *Addiction*, 119(8): 1460–1467.
<https://doi.org/10.1111/add.16509>

Smit, K., Rintala, J., Riordan, B., Lee, K., & Laslett, A.-M. (2024). Parental alcohol use and the level of child protection response in Australia (2012–21). *Addiction*. Published online: 18 Nov 2024.
<https://doi.org/10.1111/add.16677>

Tanyos, A., Jiang, H., Jenkinson, R., & Laslett, A.-M. (2024). Estimates and predictors of alcohol-related harm to intimate partners in Australia. An analysis of a nationally representative survey. *International Journal of Alcohol and Drug Research*, 12(1): 21–32.
<https://doi.org/10.7895/ijadr.497>

Willoughby, B., Room, R., Jiang, H., Kuntsche, S., Anderson-Luxford, D., & Laslett, A.-M. (2024). The extent and diversity of harm from the drinking of unknown others in Australia: An analysis of data from during the COVID-19 pandemic. *Drug and Alcohol Review*. Published online: 1 Oct 2024. <https://doi.org/10.1111/dar.13951>

Wilson, I.M., Willoughby, B., Tanyos, A., Graham, K., Walker, M., Laslett, A.-M., & Ramsoomar, L. (2024). A global review of the impact on women from men's alcohol drinking: The need for responding with a gendered lens. *Global Health Action*, 17(1): Article 2341522.
<https://doi.org/10.1080/16549716.2024.2341522>

SELECTED PRESENTATIONS

Hopkins, C., Haugland, S., Greenfield, T.K., Tamutiene, I., Hettige, S., & Laslett, A.-M. (2024, 26 October). Research and alcohol policy directed at reducing harm to children. *Global Alcohol Policy Conference (GAPC)*. Cape Town, South Africa.

Laslett, A.-M., Mojica-Perez, Y., Room, R., Rintala, J., Willoughby, B., Smit, K., & Jiang, H. (2024, 23–25 October). Estimating the global burden of alcohol's harm to others. *Lisbon Addictions: European Conference on Addictive Behaviours and Dependencies*. Lisbon Congress Centre, Spain.

Laslett, A.-M., Smit, K., Room, R., Anderson-Luxford, D., Rintala, J., Willoughby, B., Mojica-Perez, Y., Room, R., & Jiang, H. (2024, 30 October). Costing harm from others' drinking in Australia in 2021. *Australian Professional Society on Alcohol and Drugs (APSAD) Scientific Conference*. Canberra, Australia.

Smit, K. (2024, 23–26 September). A detailed Australian picture of the burden of alcohol's harm to others. In R. Room & A.-M. Laslett (Chairs), Alcohol's harm to others: A policy lever for action in Australia and cross-nationally [Symposium]. *International Society for Biomedical Research on Alcoholism (ISBRA) and the Asia-Pacific Society for Alcohol and Addiction Research (APSAAR) World Congress on Alcohol and Addictions*. Melbourne, Australia.

Smit, K., Alen, G.D., Rintala, J., Riordan, B., Jiang, H., & Laslett, A.-M. (2024, 29 May). Alcohol availability and child protection cases in Victoria, Australia: A geospatial analysis. *49th Alcohol Epidemiology Symposium of the Kettil Bruun Society*. Perth, Australia.

ALCOHOL POLICIES & SOCIAL RESPONSES RESEARCH STREAM

STRATEGIC LEAD: HENG JIANG

This research stream focuses on using sophisticated analyses to provide scenarios of pricing policy and alcohol outlet changes on consumption, health, social inequality, and as well as responses to alcohol-related harm.

To restrict the physical, economic and social availability of alcohol is an important function of alcohol policy, and policy change in these areas requires evidence-based recommendations.

Moreover, when a policy or intervention or prevention program aimed at reducing alcohol consumption or alcohol-related harm is implemented, it is important to demonstrate the impact and efficiency of said action.



SELECTED RESEARCH PROJECTS

Alcohol, tobacco and gambling expenditure and their associations with socio-economic inequalities

Australian Research Council Discovery Project
2020 – 2024

Investigators: Heng Jiang, Robin Room, Anne-Marie Laslett

Wider team: Rowan Dowling, Koen Smit

Examining associations between alcohol outlet density and domestic and non-domestic assault in NSW

NSW Government, Independent Liquor and Gaming Authority

2022 – 2024

Investigators: Heng Jiang, Michael Livingston (Curtin University), Robin Room, Anne-Marie Laslett

Wider team: Benjamin Riordan

Economic assessment methods menu for evaluating gambling interventions

Victorian Responsible Gambling Foundation
2023 – 2024

Investigators: Paul O'Halloran, Geoff Dickson, Heng Jiang, Buly Cardak, Alex Donaldson, Erica Randle, Suzanne O'Keefe (all from La Trobe University)

PHD STUDENTS AND PROJECTS

Associations of alcohol, tobacco, gambling expenditure with socioeconomic inequalities

Rowan Dowling, supervised by Heng Jiang, Anne-Marie Laslett, Charles Livingstone (Monash University)

RESEARCH DISSEMINATION

SELECTED ACADEMIC ARTICLES

Dunt, D., Jiang, H., & Room, R. (2024). Historic and current achievements of the temperance movement in the control of alcohol and its adverse health consequences. *International Journal of Drug Policy*, 133(November, 104608). <https://doi.org/10.1016/j.drugpo.2024.104608>

Marzan, M.B., Callinan, S., Livingston, M., & Jiang, H. (2024). Modelling the impacts of volumetric and minimum unit pricing for alcohol on social harms in Australia. *International Journal of Drug Policy*, 129(July, 104502). <https://doi.org/10.1016/j.drugpo.2024.104502>

Opie, J.E., Hameed, M., Vuong, A., Painter, F., Booth, A.T., Jiang, H., Dowling, R., Boh, J., McLean, N., & McIntosh, J.E. (2024). Children's social, emotional, and behavioral outcomes in military families: A rapid review. *Journal of Child and Family Studies*, 33(6): 1949–1967. <https://doi.org/10.1007/s10826-024-02856-5>

SELECTED PRESENTATIONS

Room, R. (2024, 26 July). Models for Australian cannabis legalisation: lessons of Canada, US, Uruguay, and Europe. *Australian Professional Society on Alcohol and Drugs' (APSAD) 2024 one-day Symposium on Commercial determinants of health: Public health and the marketing and sales of alcohol, other drugs, and gambling.* Melbourne, Australia.

MEDIA & EMERGING TECHNOLOGIES RESEARCH STREAM

STRATEGIC LEAD: BENJAMIN RIORDAN

This research stream aims to understand how common alcohol is in popular media, how alcohol is depicted in popular media (e.g. positive/negative), what impact exposure to alcohol in popular media can have on alcohol use, and what avenues there are for policy changes and interventions. In this stream of work, we use new and emerging technologies like wearables (e.g. transdermal devices) and artificial intelligence techniques (e.g. machine learning).

SELECTED RESEARCH PROJECTS

Novel social media approach to #Identification and #Screening for hazardous drinking among diverse non-college young adults

National Institute on Alcohol Abuse and Alcoholism

2022 – 2024

Investigators: Jennifer Merrill (Brown University), Rose Marie Ward (University of Cincinnati), Benjamin Riordan

Solutions for regulating and monitoring alcohol marketing in Instagram influencer posts

Victorian Health Promotion Foundation

2023 – 2025

Investigators: Emmanuel Kuntsche, Paula O'Brien (University of Melbourne), Robin Room, Zhen He (La Trobe University), Christine Parker (University of Melbourne), Jeannie Paterson (University of Melbourne), Simone Pettigrew (The George Institute), Benjamin Riordan, Aidan Nibali (La Trobe University), Dan Anderson-Luxford

The imitation game: The prevalence and impact of digital alcohol exposure in digital media

Australian Research Council Discovery Early Career Researcher Award

2023 – 2026

Investigator: Benjamin Riordan

Using AI to reveal the true extent and context of alcohol exposure in videos

Australian Research Council Foundation Grant

2023 – 2026

Investigators: Emmanuel Kuntsche, Zhen He (La Trobe University), Benjamin Riordan, Aidan Nibali (La Trobe University), Rutger Engels (Erasmus University Rotterdam), Rainer Hanewinkel (Institut für Therapie- und Gesundheitsforschung)

PHD STUDENTS AND PROJECTS

"Context matters": Using experience sampling to understand the contextual factors of alcohol use

Dan Anderson-Luxford, supervised by Emmanuel Kuntsche, Benjamin Riordan, Cassandra Wright (Menzies School of Health Research)

How pervasive is alcohol in popular music globally?

Gedefaw Alen, supervised by Benjamin Riordan, Emmanuel Kuntsche, Zhen He (La Trobe University)

Are athletes alcohol influencers, too? Estimating the prevalence of alcohol posts from Australia's top athletes and the impact they can have on alcohol use

Jack Delmenico, supervised by Benjamin Riordan, Emmanuel Kuntsche

Using AI to reveal the extent and context of alcohol exposure in videos

Samatha Salim, supervised by Emmanuel Kuntsche, Benjamin Riordan, Zhen He (La Trobe University)

RESEARCH DISSEMINATION

SELECTED ACADEMIC ARTICLES

Bonela, A.A., He, Z., Anderson-Luxford, D., Riordan, B., & Kuntsche, E. (2024). Development of the lyrics-based deep learning algorithm for identifying alcohol-related words (LYDIA). *Alcohol and Alcoholism*, 59(2): agad088. <https://doi.org/10.1093/alcalc/agad088>

Alen, G.D., Anderson-Luxford, D., Kuntsche, E., He, Z., & Riordan, B. (2024). The prevalence of alcohol references in music and what effect does exposure to alcohol-related music have on people's drinking behaviour? A systematic review and meta-analysis. *Alcohol: Clinical and Experimental Research*, 48(3): 431-579. <https://doi.org/10.1111/acer.15262>

Kuntsche, E., O'Brien, P., Anderson-Luxford, D., Patsouras, M., & Riordan, B. (2024). Australia needs to better regulate alcohol marketing in films. *Drug and Alcohol Review*. Published online: 3 Sept 2024. <https://doi.org/10.1111/dar.13938>

Patsouras, M., Cook, M., Pennay, A., Kuntsche, E., Manning, V., & Riordan, B. (2024). Support for a browser plug-in blocking online alcohol imagery among Australian participants: A qualitative interview study. *Health Promotion Journal of Australia*, 35(4): 1285-1294. <https://doi.org/10.1002/hpja.863>

Riordan, B., Bonela, A., He, Z., Nibali, A., Anderson-Luxford, D., & Kuntsche, E. (2024). How to apply zero-shot learning to text data in substance use research: an overview and tutorial with media data. *Addiction*, 119(5): 951-959. <https://doi.org/10.1111/add.16427>

Riordan, B., Scarf, D., Merrill, J., Lim, M., & Kuntsche, E. (2024). How is substance use portrayed in digital media and what impacts can it have? *Drug and Alcohol Review*, 43(1): 5-8. <https://doi.org/10.1111/dar.13784>

SELECTED PRESENTATIONS

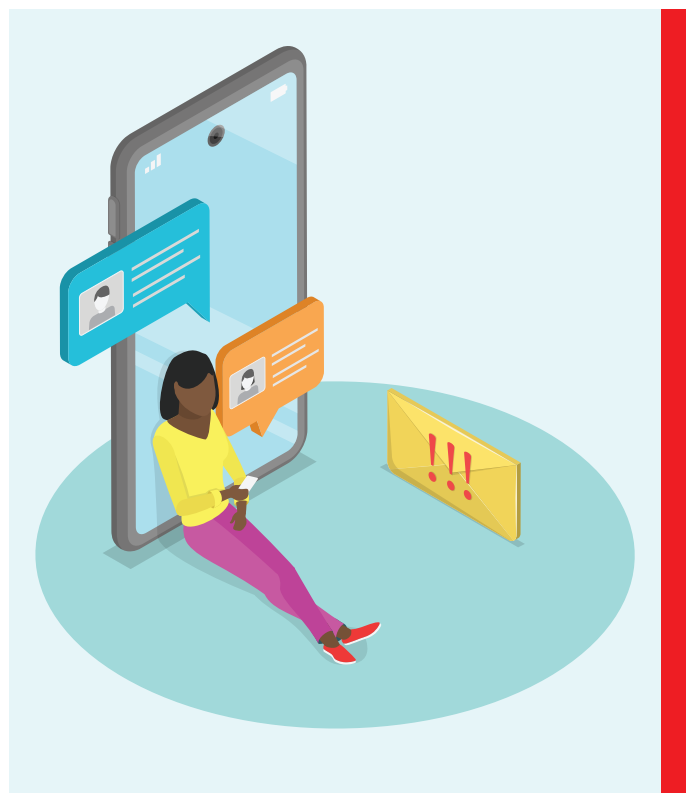
Alen, G.D., Anderson-Luxford, D., Kuntsche, E., He, Z., & Riordan, B. (2024, 27-31 May). "I'm drinkin' it and they payin' me for it" A systematic review and meta-analysis of alcohol references in various music genres, alcohol brand mentions, and temporal trends. *49th Alcohol Epidemiology Symposium of the Kettil Bruun Society*. Perth, Australia.

Kuntsche, E., He, Z., Patsouras, M., & Riordan, B.C. (2024, 9 July). Applications of Artificial Intelligence in addiction research: Techniques and implementation examples. Invited presentation at *9th International Conference on Behavioural Addictions*. University of Gibraltar, United Kingdom.

Riordan, B., & Kuntsche, E. (2024, 26 July). Analysing online marketing of alcohol. *Australian Professional Society on Alcohol and Drugs' (APSAD) 2024 one-day Symposium on Commercial determinants of health: Public health and the marketing and sales of alcohol, other drugs, and gambling*. Melbourne, Australia

Riordan, B., Anderson-Luxford, D., Du, J., He, Z., Delmenico, J., Pettigrew, S., & Kuntsche, E. (2024, 27-31 May). #Influenced: Using Artificial Intelligence to estimate how common alcohol posts are among Australian influencers on Instagram. *49th Alcohol Epidemiology Symposium of the Kettil Bruun Society*. Perth, Australia.

Santamaria, E., Anderson-Luxford, D., He, Z., Kuntsche, E., Ison, J., & Riordan, B. (2024, 27-31 May). "We want beer": A thematic analysis of online posts written about the alcohol ban during Qatar's soccer World Cup. *49th Alcohol Epidemiology Symposium of the Kettil Bruun Society*. Perth, Australia.



PRIORITY POPULATIONS RESEARCH STREAM

STRATEGIC LEAD: KYLIE LEE

This program of work focuses on reducing harms from alcohol and drug use for populations which face systemic inequities. These priority populations include communities where cultural, religious, geographic, or linguistic factors present barriers to receiving support for substance use (e.g. Aboriginal and Torres Strait Islander peoples and other culturally and linguistically diverse groups), and where groups are at additional risk from alcohol or illicit drug use (e.g. pregnant women or young people).

Our team works in partnership with communities to inform and support local responses and influence policy. By facilitating meaningful collaborations, we aim to improve prevention and treatment of alcohol and other drug-related harm.

SELECTED RESEARCH PROJECTS

Better data on methamphetamines and other drugs among Indigenous Australians to inform policy and practice ('Drug App')

National Health and Medical Research Council Ideas Grant

2021 – 2026

Investigators: Kylie Lee, Scott Wilson (Aboriginal Drug and Alcohol Council SA Aboriginal Corporation), Kate Conigrave (University of Sydney), Tanya Chikritzhs (National Drug Research Institute), Noel Hayman (Southern Queensland Centre of Excellence in Aboriginal and Torres Strait Islander Primary Health Care), Angela Dawson (University of Technology Sydney), Robert Ali (University of Adelaide), James Conigrave, Michelle Fitts (Menzies School of Health Research), Louisa Degenhardt (University of New South Wales), Jimmy Perry (Aboriginal Drug and Alcohol Council SA Aboriginal Corporation), Tim Slade (University of Sydney), Michael Doyle (University of Sydney), Nadine Ezard (St Vincent's Hospital, Sydney)

Making it easier for Aboriginal and Torres Strait Islander primary health care services to screen for risky drinking and provide tailored feedback: Adapting the Grog Survey App

Medical Research Future Fund, Primary Health Care Digital Innovations

2024 – 2028

Investigators: Kylie Lee, James Conigrave, Scott Wilson (Aboriginal Drug and Alcohol Council SA Aboriginal Corporation), Noel Hayman (Southern Queensland Centre of Excellence in Aboriginal and Torres Strait Islander Primary Health Care), Kate Conigrave (University of Sydney), Nikki Percival (University of Technology Sydney), Tanya Chikritzhs (National Drug Research Institute, Curtin University), Angela Dawson (University of Technology, Sydney), Marguerite Tracy (University of Sydney), Kirsten Morley (University of Sydney), Michael Doyle (University of Sydney), Michelle Fitts (Menzies School of Health Research), Teagan Weatherall, Jimmy Perry (Aboriginal Drug and Alcohol Council SA Aboriginal Corporation), Craig Holloway (Victorian Aboriginal Health Service), Lynette Bullen, Gaby Bruning (Burnet Institute), Annalee Stearne, Mustafa Al Ansari



THE DRUG APP

Handbook for Aboriginal alcohol and drug work (second edition)

New South Wales Health

2024 – 2027

Book editors: Kylie Lee, Bradley Freeburn, Jimmy Perry, Scott Wilson, Julie Woods, Lynette Bullen, Kate Conigrave

Project staff: Taleah Reynolds, James Conigrave, Summer Loggins



Above: Attendees of the national forum that brought experts together to consider how to adapt the Grog App for primary care contexts (MRFF Primary Health Care and Digital Innovations Grant, MRF2021660)

RESEARCH DISSEMINATION

SELECTED ACADEMIC ARTICLES

Conigrave, J.H., Lee, K., Dobbins, T., Wilson, S., Padarian, J., Ivers, R., Morley, K., Haber, P.S., Vnuk, J., Marshall, K., & Conigrave, K. (2024). No improvement in AUDIT-C screening and brief intervention rates among wait-list controls following support of Aboriginal Community Controlled Health Services: evidence from a cluster randomised trial. *BMC Health Services Research*, 24(1): 813.

<https://doi.org/10.1186/s12913-024-11214-6>

Conigrave, J.H., Wilson, S., Conigrave, K.M., Perry, J., Hayman, N., Chikritzhs, T.N., Wilson, D., Zheng, C., Weatherall, T.J., & Lee, K. (2024). Countering stereotypes: Exploring the characteristics of Aboriginal Australians who do not drink alcohol in a community representative sample. *Drug and Alcohol Review*, 43(6): 1523–1533.

<https://doi.org/10.1111/dar.13907>

Lee, K., Conigrave, J.H., Dale, E., Conigrave, K.M., Dzidowska, M., Reynolds, T., Wilson, S., Perry, J., Manton, D., Lee, A., Hayman, N., Zheng, C., Fitts, M., Wilson, D., & Dawson, A. (2024). Acceptability and quality of the 'Grog Survey App' brief intervention: Helping Aboriginal Australians reflect on their drinking using a digital health tool. *Drug and Alcohol Review*. Published online: 24 Oct 2024. <https://doi.org/10.1111/dar.13964>

Weatherall, T.J., Conigrave, J.H., Lee, K., Vnuk, J., Ivers, R., Hayman, N., Wilson, S., Gray, D., & Conigrave, K.M. (2024). Alcohol screening in 22 Australian Aboriginal community controlled health Organisations: Clinical context and who is screened. *Drug and Alcohol Review*, 43(5): 1226–1234. <https://doi.org/10.1111/dar.13851>

SELECTED PRESENTATIONS

Ansari, M.A., & Bullen, L. (2024, 31 October). Adapting the Grog App for use in primary care with Aboriginal and Torres Strait Islander Australians. *Australian Professional Society on Alcohol and Drugs (APSAD) Scientific Conference*. Canberra, Australia.

Lee, K., Weatherall, T., Conigrave, K., & Wilson, K. (2024, 24 September). CRE Indigenous Health and Alcohol: Contributions to knowledge and practice. *International Society for Biomedical Research on Alcoholism (ISBRA) and the Asia-Pacific Society for Alcohol and Addiction Research (APSAAR) World Congress on Alcohol and Addictions*. Melbourne, Australia.

Lee, K., Wilson, S., Ali, R., Stevens, M., Ward, J., Reilly, R., & Hides, L. (2024, 24 September). Digital innovation in alcohol and other drug use research and practice. *International Society for Biomedical Research on Alcoholism (ISBRA) and the Asia-Pacific Society for Alcohol and Addiction Research (APSAAR) World Congress on Alcohol and Addictions*. Melbourne, Australia.

Weatherall, T., & Reynolds, T. (2024, 6 November). Reframing narratives: Alcohol use among Aboriginal and Torres Strait Islander Peoples. *Pitch to Aboriginal community organisation, Baabayn*. Western Sydney, Australia.

RESEARCH TRANSLATION

Sharing expertise and communicating findings is a crucial component of research translation. The examples below highlight the impact and application of CAPR's research.

INQUIRY INTO THE HEALTH IMPACTS OF ALCOHOL AND OTHER DRUGS IN AUSTRALIA

On 22 August 2024, following a referral from the Minister for Health and Aged Care, the Hon Mark Butler MP, the House of Representatives Standing Committee on Health, Aged Care and Sport began an inquiry into the health impacts of alcohol and other drugs in Australia. Operating from a health-focused perspective, the inquiry reviewed alcohol and other drug policies, treatment services, community programs, and workforce to assess if current measures effectively support prevention, reduction, and recovery from alcohol and other drug-related health harms on individuals, families and communities. The Committee aims to make recommendations to improve coordination and cooperation across sectors for implementing more effective and equitable policy responses. A total of 203 submissions were received and published.

Robin Room, Emmanuel Kuntsche and Sarah Callinan submitted a written submission highlighting that improving Australian legislation is crucial to reduce alcohol-related health, social, and economic harms. The impact of alcohol on health can be immediate or cumulative, and it fluctuates with changes in consumption levels. The WHO recommends three effective policy measures: restricting alcohol advertising, increasing excise taxes, and limiting alcohol availability. These measures are shared between federal and state governments, both of which are needed to enhance enforcement to reduce alcohol-related harm in Australia.

A second CAPR written submission was authored by Kylie Lee, James Conigrave, Scott Wilson, the CEO of Aboriginal Drug and Alcohol Council (SA) Aboriginal Corporation and Adjunct Professor at La Trobe, Teagan Weatherall, Annalee Stearne, Monika Dzikowska, Lynette Bullen, Gemma Purcell-Khodr, Taleah Reynolds, and Summer Loggins. This submission articulated the structural inequities from colonisation that hinder Aboriginal and Torres Strait Islander Peoples' access to effective healthcare and treatment. The submission discussed the crucial role of culturally-informed screening and evidence-based treatment for community, and a need for more research funding to enhance culturally-appropriate care.

Robin and Emmanuel were invited to present during the morning session of the Standing Committee public hearing in Melbourne on Tuesday 29th October, and Kylie and Scott presented in the afternoon. Of the six sessions held on Tuesday, CAPR was invited to speak during two of them. The other speakers were from the Australasian College for Emergency Medicine, Windana, Royal Australian College of General Practitioners and Turning Point, Eastern Health and the Monash Addiction Research Centre.

CAPR's submissions, which contributed to a broader evidence base, provided the House of Representatives Standing Committee on Health, Aged Care, and Sport with essential information regarding the cost and social impacts of alcohol. While recommendations from the inquiry called for further submissions and discussions, the evidence presented clearly highlighted the complexities of AOD use, the resulting harm, and the need for further exploration of service and policy responses aimed at reducing this harm. CAPR will remain actively involved, contributing its expertise and insights to the ongoing inquiry.

COLLABORATION WITH LA TROBE'S CARE ECONOMY RESEARCH INSTITUTE

CAPR plays an important role in the La Trobe's Care Economy Research Institute (CERI), which conducts world-leading, multi-disciplinary research to improve health and well-being across Australia. Building industry and practice-based partnerships to ensure impactful change is a core goal of CERI. Anne-Marie Laslett is an Associate Director, responsible for the Graduate Research portfolio. She supports graduate students undertaking research into aspects of the care economy. Sharing expertise across generations of established and emerging researchers is critical to nurturing excellence and innovation. Anne-Marie is also part of the Care Experience CERI domain, along with Megan Cook, and Sarah MacLean, who is the Co-Domain Lead. Gabriel Caluzzi, Amy Pennay, Koen Smit and Heng Jiang are part of the Care Economics, Social and Policy domain.

With impactful research at its core, the five CERI research domains focus on: technology as a driving force for innovation in care (Care Technology); supporting paid and unpaid workers, and volunteers (Care Workforce); fair access and delivery of health and social care (Care Delivery); placing the lived experience of consumers at the heart of care services and design and delivery (Care Experience); and ensuring the provision of care is understood within our broader ecosystem (Care Economics, Social and Policy).

NATIONAL & INTERNATIONAL COLLABORATIONS

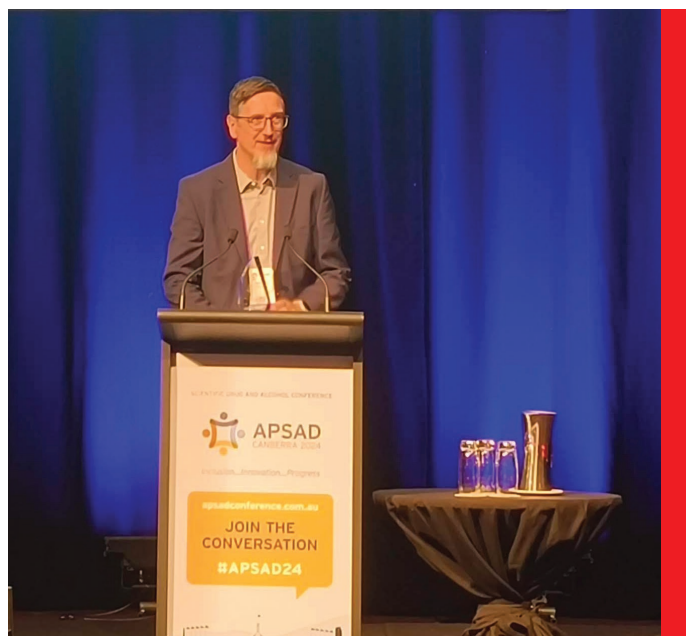
Our strong reputation also comes from our ongoing collaborations with a broad range of both Australian and international researchers across countries such as Sweden, North and South America, India, Scotland, South Africa, New Zealand and Thailand. CAPR staff both lead and provide input into a number of key projects around alcohol policy, alcohol-related behaviours and alcohol's harms to others.



ACADEMIC AWARDS & ACHIEVEMENTS

Our researchers were recognised on international, national and local stages showcasing the talent and commitment to the pursuit of research excellence among our researchers.

- **Anne-Marie Laslett** was promoted to a Level E (Professor / Principal Research Fellow), commencing in 2025.
- **Anne-Marie Laslett** received the University of Agder Visiting Researcher Travel Grant (for 2025) award.
- **Anne-Marie Laslett** received the Asia Foundation Travel Award.
- **Emmanuel Kuntsche** received the 2024 Mentor Award, presented at the 43rd Australasian Professional Society on Alcohol and other Drugs (APSAD) conference in Canberra.
- **Gabriel Caluzzi** received the 2024 Early to Mid-Career Researcher Award for the most cited paper in the journal *Drug and Alcohol Review* published by an early to mid-career researcher. Presented at the 43rd Australasian Professional Society on Alcohol and other Drugs (APSAD) conference in Canberra.
- **Heng Jiang** received the 2024 School Research Excellence Award (Research Impact), School of Psychology and Public Health, La Trobe University.
- **Heng Jiang** was promoted to a Level D (Associate Professor / Principal Research Fellow), commencing in 2025.



SERVICE TO THE ACADEMIC COMMUNITY

Our staff provide research-based input and advice to the academic community via editorial and reviewing functions for scholarly journals, as well as supervisory responsibilities to PhD students studying at other universities. This is further recognition of the expertise within CAPR and the commitment to training the next generation of alcohol researchers.

EDITORIAL APPOINTMENTS

JOURNAL	APPOINTMENT
<i>Addiction</i>	Senior Editor: Emmanuel Kuntsche, Associate Editor: Benjamin Riordan, Sarah Callinan
<i>Addiction Research and Theory</i>	Editorial Board Member and Managing Editor: Megan Cook
<i>Addicta: The Turkish Journal on the Addictions</i>	Editorial Board Member: Anne-Marie Laslett
<i>Alcohol: Clinical and Experimental Research</i>	Field Editor: Anne-Marie Laslett
<i>BMC Public Health</i>	Editorial Board Member: Heng Jiang
<i>Contemporary Drug Problems</i>	Editorial Board Member: Robin Room
<i>Drug and Alcohol Review</i>	Editor-in-Chief: Robin Room; Special Section Editor: Emmanuel Kuntsche, Benjamin Riordan; Deputy Editor: Gabriel Caluzzi, Sarah Callinan, Emmanuel Kuntsche, Kylie Lee, Benjamin Riordan
<i>Drugs: Education, Prevention and Policy</i>	Co-editor in Chief: Amy Pennay; International Editorial Board: Gabriel Caluzzi
<i>European Addiction Research</i>	Editorial Board Member: Emmanuel Kuntsche
<i>Health Sociology Review</i>	Co-Editor-in-Chief: Sarah MacLean
<i>International Journal of Alcohol and Drug Research</i>	Senior and Consulting Editor: Anne-Marie Laslett; Senior Editor: Heng Jiang; Editorial Board Member: Sarah Callinan; Special Issue Editor: Megan Cook
<i>International Journal of Drug Policy</i>	Editorial Board Member: Gabriel Caluzzi
<i>International Journal of Mental Health and Addiction</i>	Editorial Board Member: Emmanuel Kuntsche
<i>International Society for Addiction Journal Editors</i>	Elected Board Member: Anne-Marie Laslett, Robin Room
<i>Journal of Psychopathology and Clinical Science</i>	Guest Editor: Emmanuel Kuntsche
<i>Nordic Studies on Alcohol and Drugs</i>	Scientific Advisory Board: Robin Room
<i>PLOS ONE</i>	Guest Academic Editor: Gabriel Caluzzi

PHD STUDENT SUPERVISION BEYOND LA TROBE

Daniel Perkins

Thesis title: Ayahuasca as a therapeutic agent for psychiatric and substance use disorders: evidence from a cross sectional and longitudinal survey

Supervisors: Richard Chenhall, Robin Room (CAPR)

University: University of Melbourne

Commenced: 2021

Daniel Winter

Thesis: Availability and accessibility of opioid agonist treatment pharmacotherapies in New South Wales Australia

Supervisors: Carolyn Day, Paul Haber, Lauren Monds, Benjamin Riordan (CAPR)

University: University of Sydney

Commenced: 2019

Emma Vieira

Thesis: Investigating young people's drinking: the role of gender in health and harm outcomes

Supervisors: Michael Livingston, Nic Taylor, Amy Pennay (CAPR), Cassandra Wright

University: Curtin University

Commenced: 2024

Marwa Mostafa

Thesis: Assessing and promoting oral health amongst young inmates in Australia

Supervisors: Felicity Crombie, Anne-Marie Laslett (CAPR), Mark Stooze, Stuart Kinner

University: University of Melbourne

Commenced: 2018

Mia Miller

Thesis: The who, what and why of mid-life women's alcohol use in Australia

Supervisors: Cassandra Wright, Sandra Kuntsche, Sarah Callinan (CAPR)

University: Menzies School of Health Research

Commenced: 2022

Ratih Eka Pertiwi

Thesis: The role and place of alcohol consumption amongst young people in Jayapura, Papua, Indonesia

Supervisors: Catherine Vaughan, Richard Chenhall, Robin Room (CAPR)

University: University of Melbourne

Commenced: 2018

Roberta Vasconcellos

Thesis: Understanding the effects of screen time on children and adolescents' socio-emotional wellbeing

Supervisors: Taren Sanders, Chris Lonsdale, Philip Parker, Michael Noetel, James Conigrave (CAPR)

University: Australian Catholic University

Commenced: 2020

Susan Welch

Thesis: Hospital pharmacists, Aboriginal and Torres Strait Islander peoples and chronic disease: Helping to close the gap

Supervisors: Rebekah Moles, Kylie Lee (CAPR)

University: University of Sydney

Commenced: 2020

Van Nguyen Callaly

Thesis: A systemic approach to advancing cross-sector collaboration between domestic and family violence, and alcohol or other drugs services

Supervisors: Cathy Humphries, Margaret Kertesz, Jennifer Davidson, Anne-Marie Laslett (CAPR)

University: University of Melbourne

Commenced: 2021

FUNDING DETAILS

Below is a breakdown of CAPR's key funding sources and where applicable, the major projects funded through these sources.

FUNDS RECEIVED IN 2024 FROM THE SOURCES LISTED HERE TOTALED	6,145,853
CATEGORY 1: AUSTRALIAN RESEARCH COUNCIL (ARC)	420,032
From mainstream to margins: Young people, heavy drinking and de-normalisation (Discovery Project)	129,464
Using AI to quantify alcohol exposure in videos (Discovery Project)	112,577
Using AI to reveal the impact of digital alcohol exposure on alcohol use (DECRA)	177,991
CATEGORY 1: NATIONAL HEALTH AND MEDICAL RESEARCH COUNCIL (NHMRC)	5,134,909
Making it easier to screen for alcohol use in primary care: adapting the Grog Survey App	3,383,665
Alcohol's harm to others: Estimating and reducing harm (Investigator Grant)	330,257
Better data on methamphetamines and other drugs among Indigenous Australians (Ideas Grant)	1,385,978
It's time to flourish: Co-designed perinatal and early years care, self-determined by Aboriginal and Torres Strait Islander women resulting in policy and practice transformation and exceptional service (ICARE) (via University of South Australia)	5,000
Triangulating social media, global survey and wastewater data to inform policy (Ideas Grant) (via the University of Queensland)	30,009
CATEGORY 2	359,074
Edith Cowan University: Commissioned review for the Australian Indigenous Health InfoNet on alcohol use among Aboriginal and Torres Strait Islander Peoples	4,000
NSW Ministry of Health: Produce the 2nd Edition of the Handbook for Aboriginal Alcohol and Drug Work	150,721
NSW Ministry of Health: To improve capacity of the NSW alcohol and other drugs workforce	86,178
The Victorian Endowment for Science, Knowledge and Innovation: Developing a new screening tool for alcohol disorders	15,000
The Victorian Endowment for Science, Knowledge and Innovation: Paradigm shifting alcohol policy to reduce alcohol related harm	10,000
Victorian Aboriginal Health Service: Stay Strong	27,739
Victorian Health Promotion Foundation: Understanding heavy alcohol consumption cultures among nurses and lawyers (linked to an ARC LP)	10,000
Victorian Health Promotion Foundation: Understanding socioeconomic inequalities in alcohol use and harm in Victoria	10,000
Victorian Responsible Gambling Foundation: Survey analysis: Exploring the relationship between alcohol use and gambling	45,436

CATEGORY 3	79,075
Brown University: Targeting alcohol misuse via social networking sites: identification screening B	19,660
Hunter New England and Central Coast Primary Health Network: Evaluation of the Nyannibu Wellness Pilot Program	40,000
Thailand Ministry of Public Health: Evidence generation on the harm to others from drinking	4,004
Foundation for Alcohol Research and Education: An examination of the distribution of alcohol consumption in Australia	12,637
Foundation for Alcohol Research and Education: Review of every moment matters campaign report	2,775
MISCELLANEOUS	26,666
Sundry revenue/Fee for service	26,666
LA TROBE UNIVERSITY	126,096
DVCR and Research Theme support and other competitive grants	126,096

Category 1: Australian competitive grants R & D
Category 2: Other public service R & D
Category 3: Industry and other R & D



LA TROBE
UNIVERSITY



centre for alcohol
policy research

Centre for Alcohol Policy Research
School of Psychology and Public Health

La Trobe University
Melbourne, AUSTRALIA



Email

alcoholpolicy@latrobe.edu.au



Visit us

latrobe.edu.au/capr

Photo credits

Cover image: Unsplash/jul-chi

Page 2: La Trobe Media

Page 3: Created by Chantal Pereira

Page 15: Unsplash/愚木混株 Yumu

Page 15 Unsplash/Aleksandr-Popov

Page 17: iStock/MarioGuti

Page 17: Unsplash/Abhinav-Bhardwaj

Page 19: iStock/czarny_bez

Page 21: iStock/DragonImages

Page 23: iStock/Natalia Brand

Page 23 iStock/TarikVision

Page 24: Created by Priority Populations team