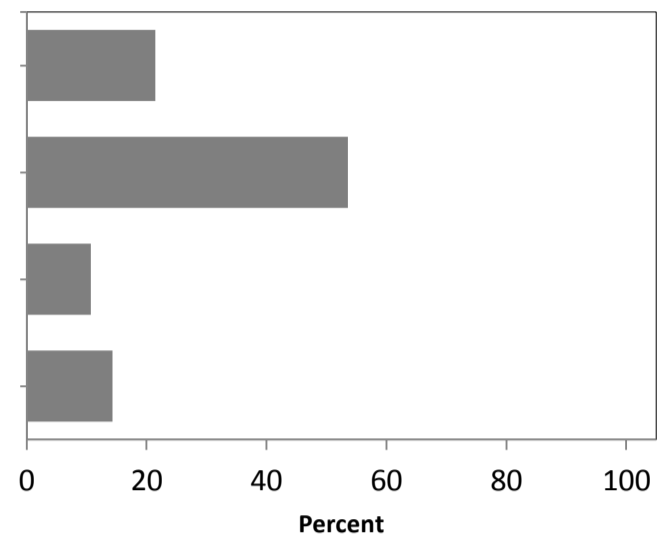


MEMBERSHIP

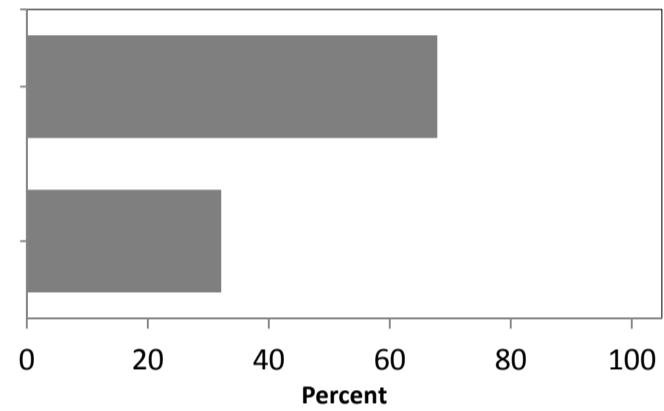
1) *I have been on the Academic Board for:*

	Count	%
1 Less than 1 year	6	21.4
2 1 - 3 years	15	53.6
3 4 - 5 years	3	10.7
4 More than 5 years	4	14.3
Total	28	
Average	2.18	
Stdev	0.94	



2) *Have you attended one of the Academic Board induction sessions held at the beginning of the year?*

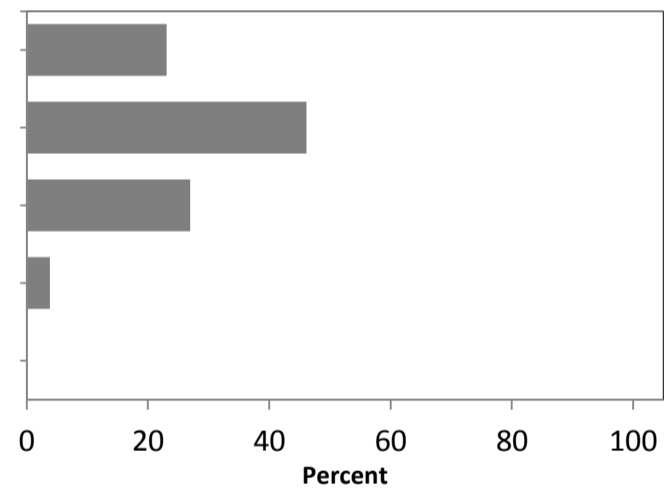
	Count	%
1 Yes	19	67.9
2 No	9	32.1
Total	28	
Average	1.32	
Stdev	0.48	



RESPONSIBILITIES

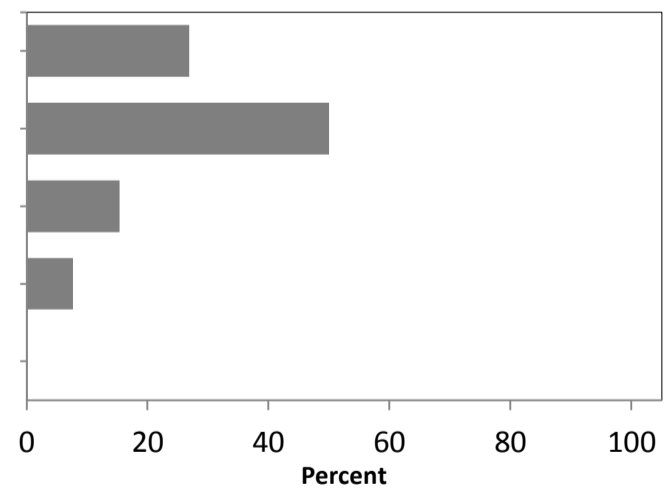
3) *During 2014, the Board performed its functions as set out in the Terms of Reference satisfactorily...*

	Count	%
1 Strongly Agree	6	23.1
2 Agree	12	46.2
3 Neutral	7	26.9
4 Disagree	1	3.8
5 Strongly Disagree	0	0.0
Total	26	
Average	2.12	
Stdev	0.82	



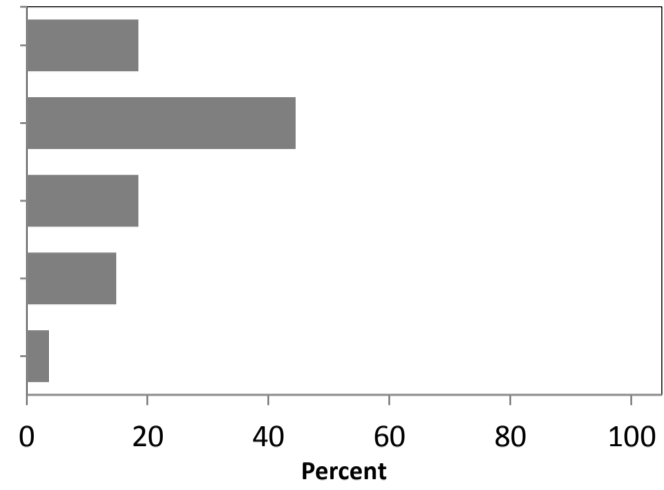
4) *During 2014, the Board's activities aligned with the University Strategic Plan...*

	Count	%
1 Strongly Agree	7	26.9
2 Agree	13	50.0
3 Neutral	4	15.4
4 Disagree	2	7.7
5 Strongly Disagree	0	0.0
Total	26	
Average	2.04	
Stdev	0.87	



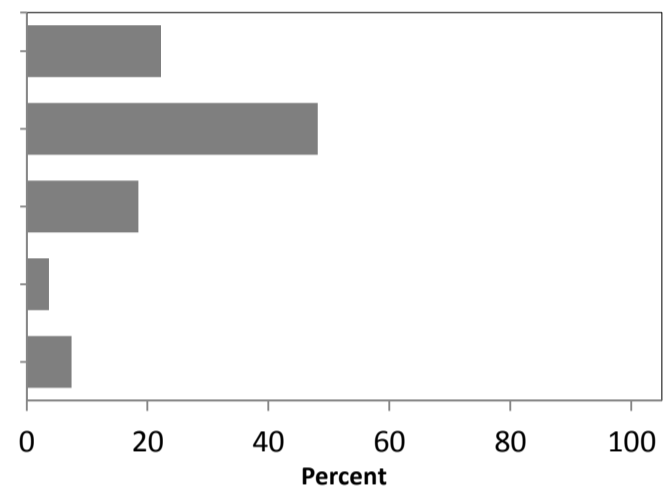
5) *During 2014, the Board promoted Teaching & Learning and Research satisfactorily...*

	Count	%
1 Strongly Agree	5	18.5
2 Agree	12	44.4
3 Neutral	5	18.5
4 Disagree	4	14.8
5 Strongly Disagree	1	3.7
Total	27	
Average	2.41	
Stdev	1.08	



6) *During 2014, the Board developed and monitored academic policies effectively...*

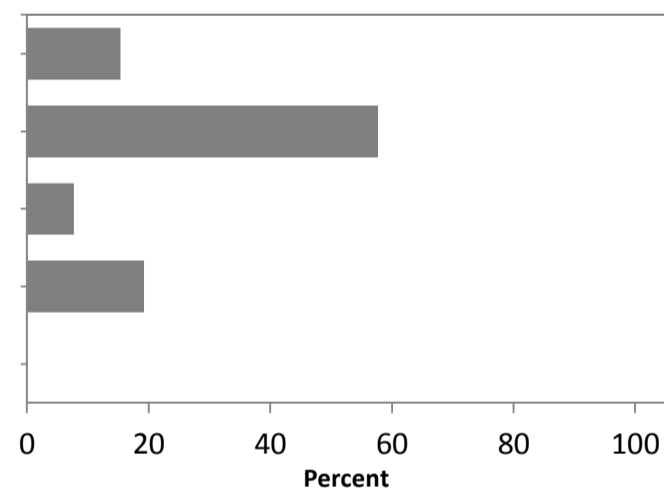
	Count	%
1 Strongly Agree	6	22.2
2 Agree	13	48.1
3 Neutral	5	18.5
4 Disagree	1	3.7
5 Strongly Disagree	2	7.4
Total	27	
Average	2.26	
Stdev	1.10	



ORGANISATIONAL MATTERS

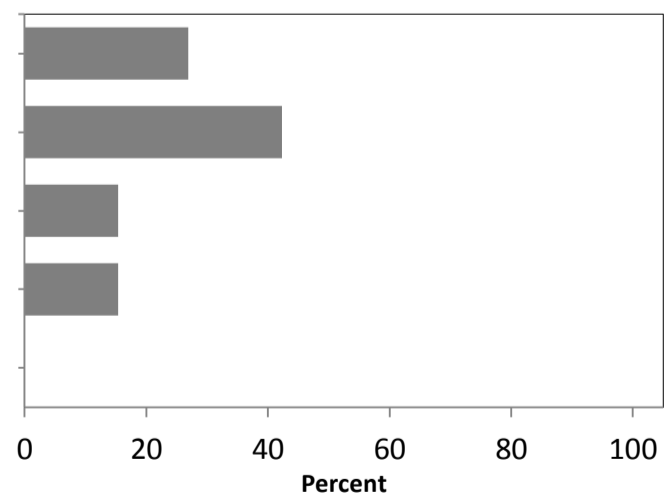
8) *Academic Board has served the University well...*

	Count	%
1 Strongly Agree	4	15.4
2 Agree	15	57.7
3 Neutral	2	7.7
4 Disagree	5	19.2
5 Strongly Disagree	0	0.0
Total	26	
Average	2.31	
Stdev	0.97	



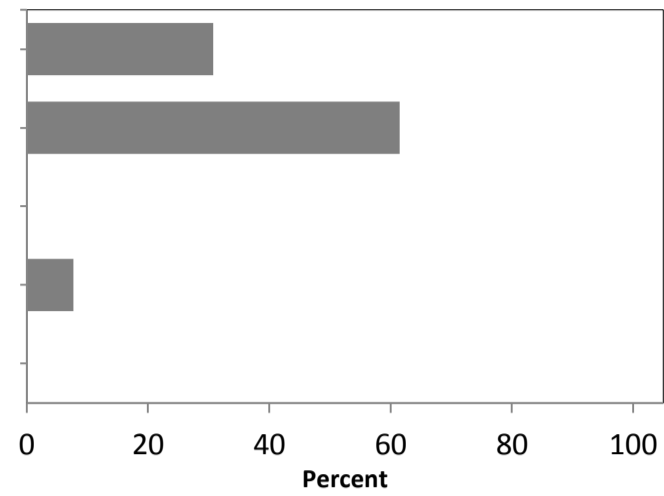
9) *The 2014 membership of the Board provided appropriate representation from across the University...*

	Count	%
1 Strongly Agree	7	26.9
2 Agree	11	42.3
3 Neutral	4	15.4
4 Disagree	4	15.4
5 Strongly Disagree	0	0.0
Total	26	
Average	2.19	
Stdev	1.02	



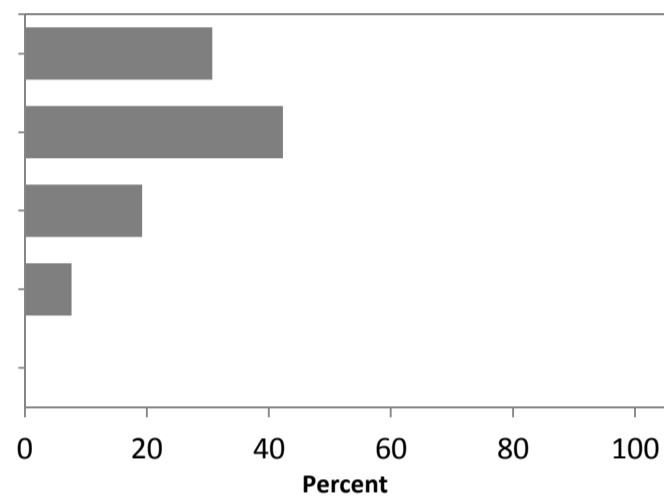
10) *The Board met frequently enough to perform its functions (it met 8 times during 2014)...*

	Count	%
1 Strongly Agree	8	30.8
2 Agree	16	61.5
3 Neutral	0	0.0
4 Disagree	2	7.7
5 Strongly Disagree	0	0.0
Total	26	
Average	1.85	
Stdev	0.78	



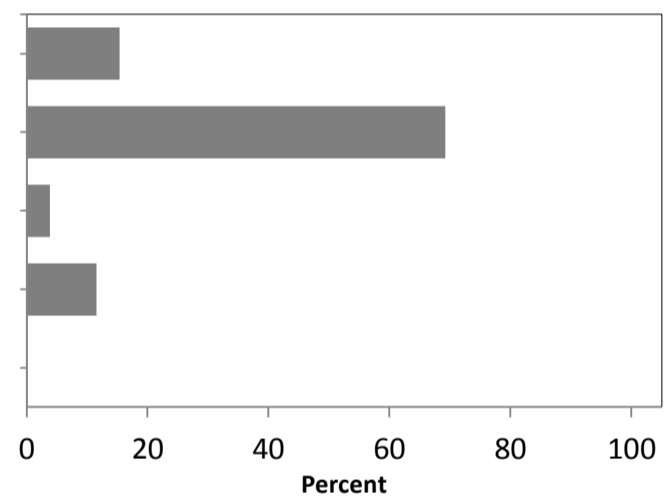
11) *The structure of the Board's agenda was satisfactory...*

	Count	%
1 Strongly Agree	8	30.8
2 Agree	11	42.3
3 Neutral	5	19.2
4 Disagree	2	7.7
5 Strongly Disagree	0	0.0
Total	26	
Average	2.04	
Stdev	0.92	



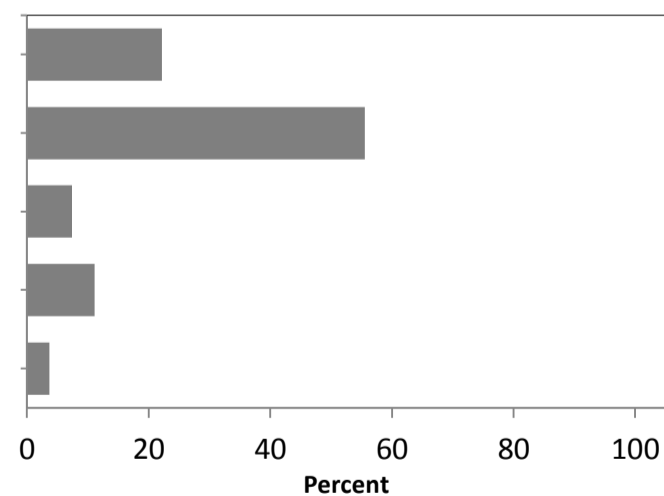
12) *The standard of submissions/attached papers was satisfactory...*

	Count	%
1 Strongly Agree	4	15.4
2 Agree	18	69.2
3 Neutral	1	3.8
4 Disagree	3	11.5
5 Strongly Disagree	0	0.0
Total	26	
Average	2.12	
Stdev	0.82	



13) *The Vice-Chancellor's report was informative and useful...*

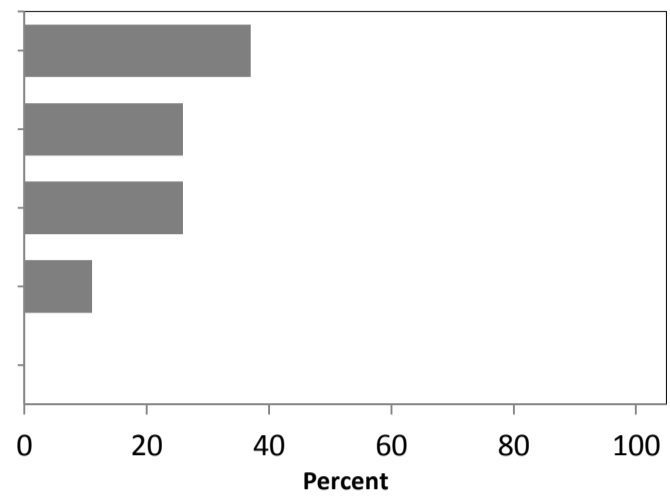
	Count	%
1 Strongly Agree	6	22.2
2 Agree	15	55.6
3 Neutral	2	7.4
4 Disagree	3	11.1
5 Strongly Disagree	1	3.7
Total	27	
Average	2.19	
Stdev	1.04	



STAKEHOLDER RELATIONSHIPS

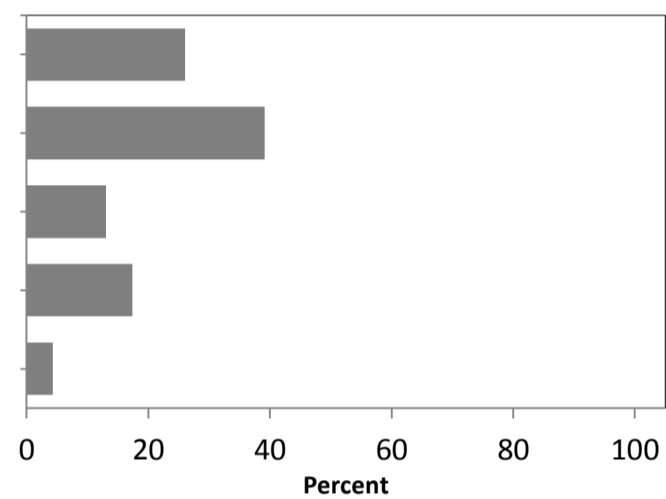
15) *I understand the relationship between Academic Board and its policy committee and sub-committees...*

	Count	%
1 Strongly Agree	10	37.0
2 Agree	7	25.9
3 Neutral	7	25.9
4 Disagree	3	11.1
5 Strongly Disagree	0	0.0
Total	27	
Average	2.11	
Stdev	1.05	



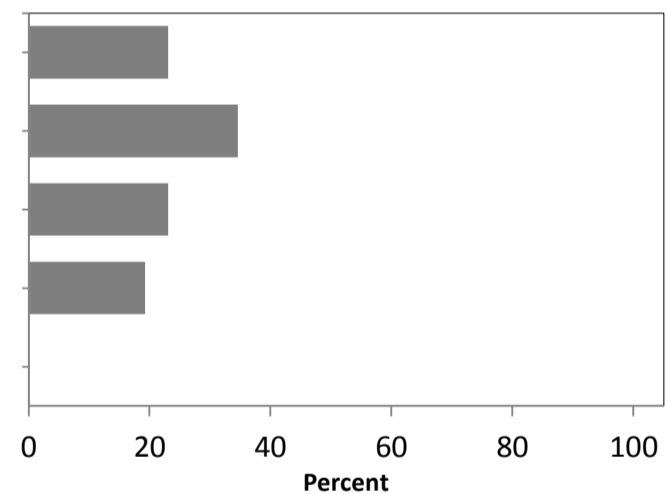
16) *The number and composition of policy committee and sub-committees provide sufficient breadth and depth to academic governance...*

	Count	%
1 Strongly Agree	6	26.1
2 Agree	9	39.1
3 Neutral	3	13.0
4 Disagree	4	17.4
5 Strongly Disagree	1	4.3
Total	23	
Average	2.35	
Stdev	1.19	



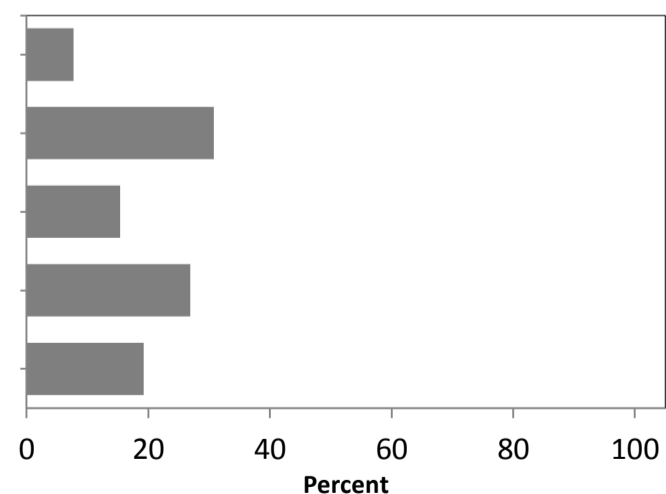
17) *The reports from policy committee and sub-committees of Academic Board provide enough detail for informed discussion...*

	Count	%
1 Strongly Agree	6	23.1
2 Agree	9	34.6
3 Neutral	6	23.1
4 Disagree	5	19.2
5 Strongly Disagree	0	0.0
Total	26	
Average	2.38	
Stdev	1.06	



18) *The Board communicates its decisions effectively to staff and students...*

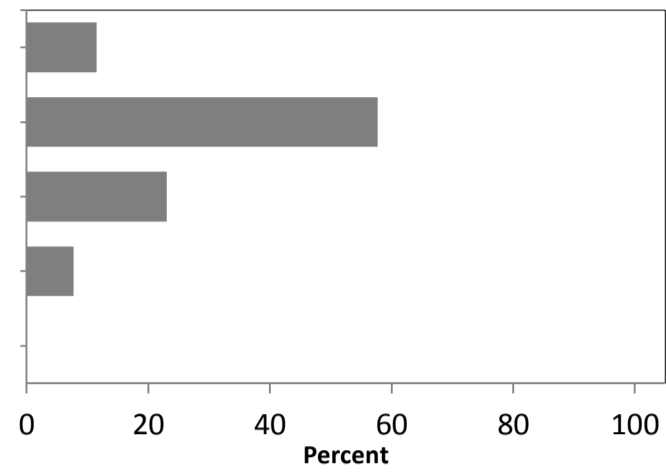
	Count	%
1 Strongly Agree	2	7.7
2 Agree	8	30.8
3 Neutral	4	15.4
4 Disagree	7	26.9
5 Strongly Disagree	5	19.2
Total	26	
Average	3.19	
Stdev	1.30	



OPERATIONAL MATTERS

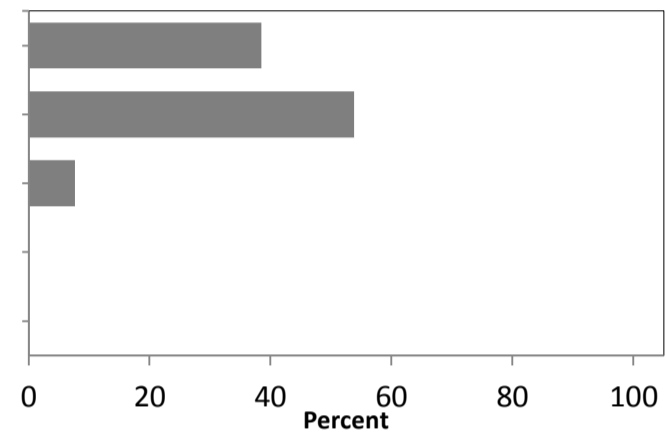
20) *During 2014, the Board worked well as a group...*

	Count	%
1 Strongly Agree	3	11.5
2 Agree	15	57.7
3 Neutral	6	23.1
4 Disagree	2	7.7
5 Strongly Disagree	0	0.0
Total	26	
Average	2.27	
Stdev	0.78	



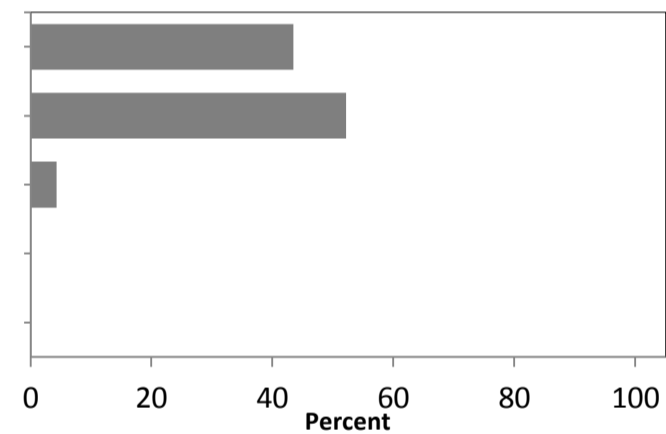
21) *During 2014, the roles and responsibilities of the chair were discharged appropriately...*

	Count	%
1 Strongly Agree	10	38.5
2 Agree	14	53.8
3 Neutral	2	7.7
4 Disagree	0	0.0
5 Strongly Disagree	0	0.0
Total	26	
Average	1.69	
Stdev	0.62	



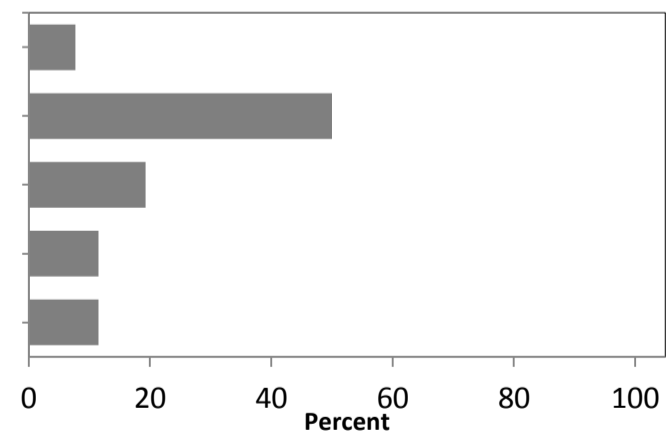
22) *The standard of Secretariat support to Academic Board and its policy committees was high...*

	Count	%
1 Strongly Agree	10	43.5
2 Agree	12	52.2
3 Neutral	1	4.3
4 Disagree	0	0.0
5 Strongly Disagree	0	0.0
Total	23	
Average	1.61	
Stdev	0.58	



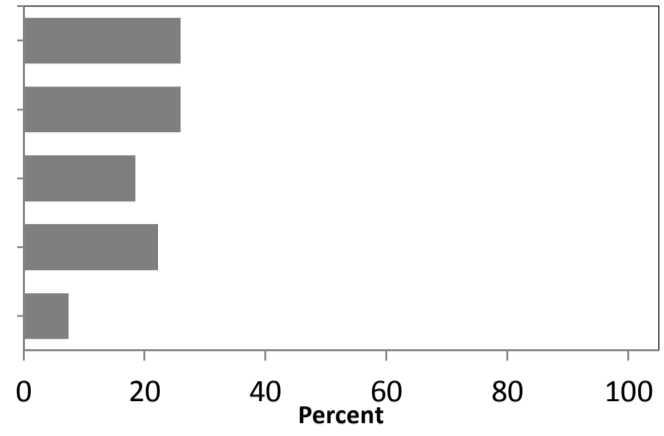
23) *During 2014, the level of discussion on each item was appropriate...*

	Count	%
1 Strongly Agree	2	7.7
2 Agree	13	50.0
3 Neutral	5	19.2
4 Disagree	3	11.5
5 Strongly Disagree	3	11.5
Total	26	
Average	2.69	
Stdev	1.16	



24) *I felt encouraged to contribute to discussion during Board meetings...*

	Count	%
1 Strongly Agree	7	25.9
2 Agree	7	25.9
3 Neutral	5	18.5
4 Disagree	6	22.2
5 Strongly Disagree	2	7.4
Total	27	
Average	2.59	
Stdev	1.31	



25) *I am satisfied with my own contributions at Board meetings...*

	Count	%
1 Strongly Agree	3	11.1
2 Agree	13	48.1
3 Neutral	7	25.9
4 Disagree	3	11.1
5 Strongly Disagree	1	3.7
Total	27	
Average	2.48	
Stdev	0.98	

