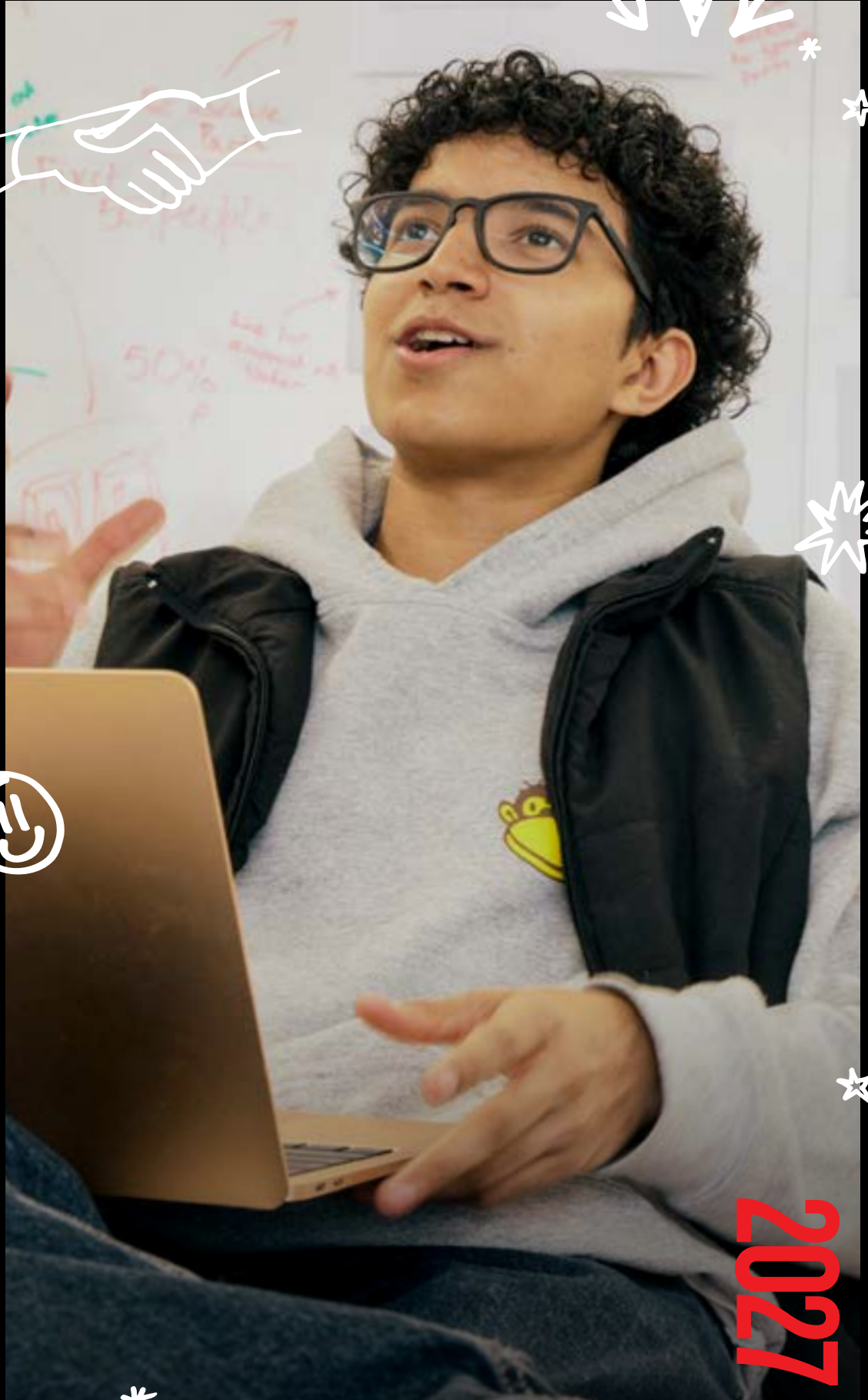


COURSE GUIDE

BUSINESS AND COMMERCE



2027

WHY STUDY BUSINESS OR COMMERCE



WANT TO DRIVE BUSINESS SUCCESS IN THE DIGITAL ERA? YOU'LL NEED A DEGREE FROM A UNIVERSITY THAT'S PART OF THE TOP 6% OF UNIVERSITIES ACCREDITED BY THE ASSOCIATION TO ADVANCE COLLEGIATE SCHOOLS OF BUSINESS (AACSB).





Our business and commerce degrees don't just teach you the basics, you'll learn industry-leading models and approaches, and how to harness the latest technologies for business success.

You will learn:


- practical skills such as critical thinking, problem solving and project management
- entrepreneurship and innovation
- how organisations and economies work
- AI skills and innovation
- how to lead teams, businesses and organisations.

Our programs are recognised by local and international quality assurance and accreditation agencies, including the AACSB, Australian Computer Society, Australian Human Resources Institute, Australian Marketing Institute, Certified Practising Accountants Australia, and Chartered Accountants Australia and New Zealand.

- * Choose from a range of AI-integrated business degrees, with AI topics and technologies embedded into the curriculum.
- * Learn in a multi-million-dollar business hub designed to replicate real-world business environments and professional practice.
- * We're ranked in the world's top 250 for business and economics.¹
- * Build practical, job-ready skills using a simulated financial trading room and specialist facilities, including behavioural science labs.
- * We're ranked in the world's top 300 for accounting and finance.²
- * Graduate from a university ranked second in Victoria for overall undergraduate employability.³
- * We're ranked in the world's top 150 for hospitality and leisure management.⁴
- * Learn from a mix of academics and industry professionals, with courses developed in close collaboration with industry partners.

1. Times Higher Education (THE), 2026, *Business and Economics University Rankings 2026*.
 2. Quacquarelli Symonds (QS), 2025, *QS World University Rankings by Subject 2025: Accounting & Finance*.
 3. Quality Indicators for Learning and Teaching (QILT) (2025), *2024 Graduate Outcomes Survey – Longitudinal*.
 4. Quacquarelli Symonds (QS), 2026, *QS World University Rankings by Subject 2026: Hospitality and Leisure Management*.

STUDY HOW AND WHERE YOU WANT



CHOOSE HOW AND WHERE YOU WANT TO STUDY – ON YOUR COUCH, IN A CLASSROOM, OR A MIX OF BOTH. MANY OF OUR COURSES GIVE YOU THE FLEXIBILITY TO LEARN IN A WAY THAT SUITS YOU, WITH OPTIONS FOR ONLINE STUDY,¹ ON-CAMPUS CLASSES, OR A COMBINATION THROUGH LA TROBE'S UNIQUE STUDYFLEX™ MODEL.



¹. Please see our website for more details on which courses offer online study options.



Melbourne Campus (Bundoora)

At our main campus, you'll be surrounded by bushland while still just a tram ride from from the Melbourne city. You can study our full range of business and commerce courses here, with classes in our business hub. Making the most of your time at uni is easy in Bundoora, with lots of events and clubs to keep you busy.



Bendigo Campus

Study accounting and business in modern facilities, and benefit from access to our local industry connections when you take part in work-integrated learning experiences.

Sydney Campus

If you're located in NSW, we offer the Bachelor of Business at our Sydney Campus so you can stay local.



Find your people

University is more than a place to study; it's also a hub of social activity. Did you know there are student clubs for the business cohort? You can get involved in the Bendigo Business Club (BC) or the Business and Entrepreneurship Society (BES) in Bundoora.




Online

You can study our Bachelor of Business and Bachelor of Accounting fully online. You'll learn exactly what our on-campus students are learning in the classroom and have the same placement opportunities.








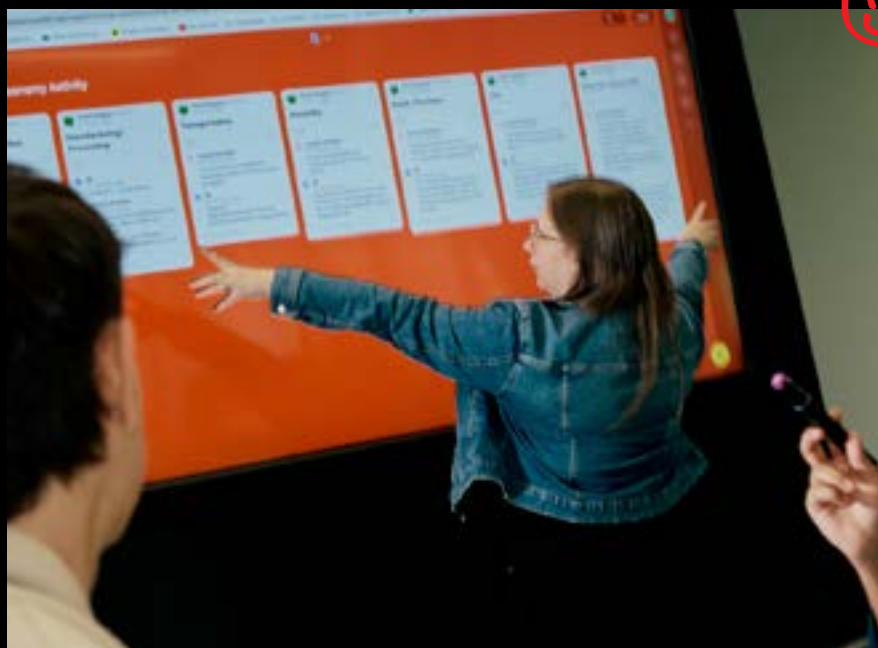
THE FUTURE OF WORK STARTS HERE



IF YOU'RE LOOKING TO START YOUR CAREER IN AN IN-DEMAND INDUSTRY, BUSINESS SHOULD BE ONE OF YOUR TOP OPTIONS. AT LA TROBE, WE'RE NOT WAITING FOR THE FUTURE TO HAPPEN. WE'RE GETTING AHEAD BY GIVING STUDENTS HANDS-ON INDUSTRY EXPERIENCES AND THE AI-READY SKILLS THEY NEED TO SECURE THEIR CAREERS NOW AND INTO THE FUTURE.

The future of business is changing. At La Trobe, we know the demands of business are evolving, and we're preparing our graduates to meet it. The World Economic Forum estimates about 170 million new jobs will be created by global macro trends this decade, which is equivalent to 14% of total employment today. When it comes to the skills needed for this future, technological skills are projected to grow more rapidly than any other skill. Of the technological skills in demand, AI and big data are considered the fastest-growing skill in demand.

-  **Career ready advantage**
Sector-leading employability programs and projects to develop skills employers want.
-  **Industry placements**
Professional placements that test your knowledge in a real-world environment.
-  **Successful graduates**
Get trained for the Australian job market during your study.
-  **Learning with industry**
Mentoring, networking, specialist career consultations, workshops, leadership programs and more.
-  **Career ready online and career hub**
100+ e-learning programs, resume and cover letter feedback, interview practice, job opportunities and more.



The future is happening with AI adoption continuing at a rapid pace. In partnership with industry giants like Microsoft, OpenAI, Optus, CyberCX and more, La Trobe has a bold new ambition: transform research, education, student support and business operations by applying an AI-first approach.

This nation-leading project will deliver an AI-ready workforce of graduates and academics, built on key principles of safety and responsibility. By meeting the future head-on with an AI-first approach, embedding AI across our course curriculum, teaching and research, you'll get high-quality and future-fitted education.

- ◆ **AI-focused curriculum**
 We're embedding AI across our curriculum, ensuring our teachers and students are equipped with the AI skills needed for the future workplace.
- ◆ **OpenAI for all**
 We're the first university in Victoria to sign a deal with OpenAI, ensuring all students will have access to ChatGPT Edu in 2027.
- ◆ **AI upskilling**
 We're launching bespoke AI training for students, teachers and staff to foster AI fluency, responsible adoption and ethical use across the uni.
- ◆ **Powered NVIDIA**
 We're the first uni in Australia to deploy a NVIDIA DGX H200, pushing the boundaries of AI-driven research.



FEATURE COURSE

BACHELOR OF BUSINESS F C I O

OVERVIEW	La Trobe's Bachelor of Business is an AI-integrated course, embedding artificial intelligence concepts and tools across the curriculum to prepare students for the evolving demands of the business world. In this flexible degree, you'll explore the fundamentals of business with the option to pair your major with a minor, take two minors instead of a second major, or combine a minor with four electives, giving you plenty of options to shape your degree around your interests.
PREREQUISITES	Units 3 & 4: a study score of at least 25 in English (EAL) or at least 20 in English other than EAL.
INTAKE	MEL Semester 1, 2 & Summer BEN SYD ONL Semester 1 & 2
DURATION	3 years
MAJORS	MELBOURNE: Agribusiness, Digital business, Economics, Finance, Human resource management, International business, Management, Marketing, Tourism and event management BENDIGO: Agribusiness, Digital business, Management, Marketing SYDNEY: Management, Marketing ONLINE: Agribusiness, Digital business, Management, Marketing
CAREER PATHS	<ul style="list-style-type: none"> - Financial analyst - Business development manager - Marketing manager - Human resources manager - Economic analyst - Market analyst

MEL BEN SYD ONL

ATAR	55.10	58.10	NP	60.00
ASPIRE ATAR	50.00	50.00	50.00	50.00

EXAMPLE COURSE STRUCTURE: YEAR 1

Year 1 requires the completion of 120 credit points, including 90 credit points from core subjects, 15 credit points from your chosen major and 15 credit points from your chosen major or minor. In your second and third years, you'll study more subjects from your major and minor and get access to our range of electives.

In this sample course table, you can see what your first year could look like.

SUBJECT TYPE	SEMESTER 1	SEMESTER 2
Core (15 credit points)	Introduction to finance	Entrepreneurship and innovation
Core (15 credit points)	Data fundamentals for business decisions	Markets, policy and the economy
Core or chosen major (15 credit points)	Accounting for business	Major: Finance Subject: Financial statement analysis
Core or chosen minor (15 credit points)	Management and organisations	Minor: International business Subject: Introduction to international business



BACHELOR OF ACCOUNTING ^{© ①}

OVERVIEW	Build core accounting knowledge and skills across every aspect of business. From working with industry-standard technology to undertaking a project which simulates real-world business scenarios, you'll gain the technical and human skills you need to adapt and thrive in our era of digital transformation. With a range of optional majors, minors and electives, you'll build your degree to support your career ambitions. You'll have the opportunity to undertake a work placement where you gain real-life experience and first-hand knowledge of professional organisations. Be ready to become a trusted authority on business operations.
PREREQUISITES	Units 3 & 4: a study score of at least 25 in English (EAL) or at least 20 in English other than EAL.
INTAKE	^{MEL} Semester 1, 2 & Summer ^{BEN} ^{ONL} Semester 1 & 2
DURATION	3 years
CAREER PATHS	<ul style="list-style-type: none"> - Business analyst - Financial accountant - Management accountant - Taxation accountant - Auditor - Forensic accountant

	^{MEL}	^{BEN}	^{ONL}
ATAR	61.90	60.25	61.10
ASPIRE ATAR	50.00	50.00	50.00

BACHELOR OF BUSINESS ANALYTICS ^{© ①}

OVERVIEW	Kickstart an exciting career that drives data, analytics, and artificial intelligence (AI) innovations for business, economic and social growth. Co-designed with industry experts, this degree unpacks organisational and business complexities of data-driven decision-making through knowledge and skills development in business value of data, data engineering and management, analytics technologies and applications, and responsible AI adoption. This degree provides pathways for industry placements, real-world projects, and international exchange opportunities.
PREREQUISITES	Units 3 & 4: a study score of at least 25 in English (EAL) or at least 20 in English other than EAL.
INTAKE	Semester 1, 2 & Summer
DURATION	3 years
CAREER PATHS	<ul style="list-style-type: none"> - Data analyst - Business analyst - Management consultant - Market research analyst - Asset investment analyst

	^{MEL}
ATAR	65.10
ASPIRE ATAR	50.00

BACHELOR OF BUSINESS/BACHELOR OF ARTS ^{© ①}

OVERVIEW	Combine a practical business education with the skillset of an arts degree. Learn the foundations of business, while exploring your passions and developing essential human skills such as communication and critical thinking. Choose from more than 20 study areas, including digital business, management, psychology, politics, history, sociology and marketing. Harness the latest software programs and platforms, and use data analysis tools to assess business trends and decisions. You'll also gain hands-on industry experience by participating in a work-based learning placement, graduating with practical skills and a global perspective.
PREREQUISITES	Units 3 and 4: a study score of at least 25 in English (EAL) or at least 20 in English other than EAL.
INTAKE	Semester 1 & 2
DURATION	4 years
MAJORS	Agribusiness, Anthropology, Archaeological and heritage studies, Asian studies, Creative and professional writing, Crime, justice and legal studies, Digital business, Digital media, English, Ethics and social justice, Hindi studies, History, International studies, Linguistics, Management, Marketing, Philosophy, Politics, Psychological science, Sociology, Sustainability and development, Visual cultures
CAREER PATHS	<ul style="list-style-type: none"> - Project manager - Corporate consultant - Marketing manager - Communications advisor - Economic analyst - Market analyst

	^{ONL}
ATAR	NP
ASPIRE ATAR	50.00

BACHELOR OF BUSINESS/BACHELOR OF PSYCHOLOGICAL SCIENCE ^{© ①}

OVERVIEW	Build valuable business and commerce skills and develop an in-depth knowledge of human behaviour. Through your business studies, you'll prepare to become an agile and innovative business leader. Build expertise for the digital age, including in data analysis, market research and business planning. As you study psychology, you'll develop the skills to evaluate people's psychological states, support them to cope with disorders and understand how environmental factors shape our psychology.
PREREQUISITES	Units 3 and 4: a study score of at least 25 in English (EAL) or at least 20 in English other than EAL.
INTAKE	Semester 1
DURATION	4 years
MAJORS	Agribusiness, Digital business, Management, Marketing
CAREER PATHS	<ul style="list-style-type: none"> - Organisational development specialist - Psychologist - Economic analyst - Management consultant - Market researcher

	^{ONL}
ATAR	62.15
ASPIRE ATAR	50.00

PLEASE SEE WEBSITE FOR DETAILS

^FFirst Nations Australian entry | ^CAspire Community Impact | ^EAspire Everyday Impact | ^AAspire Academic Impact | **NA** ATAR not applicable | **NP** ATAR not published | ^RRegional Benefits Program | **RE** Regional entry

BACHELOR OF COMMERCE/BACHELOR OF ARTS [Ⓢ]

MEL

OVERVIEW	Gain a comprehensive understanding of commercial and policy areas, combined with the human skills of an arts degree. Co-designed with industry leaders, our double degree gives you a multidisciplinary set of skills and knowledge sought-after by employers and policymakers. Take advantage of the synergies between the two disciplines and successfully solve complex problems by merging technical know-how and strategic analysis. Choose from a huge range of majors and minors in commerce, arts and other disciplines like science and IT. Apply your learning through industry placements, work-integrated learning projects and overseas student exchange opportunities.
PREREQUISITES	Units 3 and 4: a study score of at least 25 in English (EAL) or at least 20 in English other than EAL.
INTAKE	Semester 1 & 2
DURATION	4 years
MAJORS	Aboriginal studies, Accounting, Anthropology, Archaeological and heritage studies, Asian studies, Business analytics, Chinese studies, Classics and ancient history, Creative and professional writing, Crime, justice and legal studies, Digital media, Economics, English, Environmental humanities, Ethics and social justice, Finance, French studies, Gender, sexuality and diversity studies, Greek studies, Hindi studies, Italian studies, Japanese studies, History, International studies, Linguistics, Management, Marketing, Philosophy, Politics, Psychological science, Sociology, Spanish studies, Sustainability and development, Visual cultures
CAREER PATHS	<ul style="list-style-type: none"> – Project manager – Business analyst – Community development manager – Communications advisor – Financial advisor

ATAR	NP
ASPIRE ATAR	65.00

BACHELOR OF COMMERCE/BACHELOR OF BIOMEDICINE [Ⓢ]

MEL

OVERVIEW	Learn how to navigate rapidly evolving environments in biotechnology, health, commercial practice and public policy. Co-designed with industry leaders, our double degree gives you a multidisciplinary set of skills and knowledge sought-after by employers and policymakers. Build fundamental knowledge in chemistry, bioscience and health, while gaining the skills to solve complex problems by merging technical know-how and strategic analysis with an in-depth knowledge of innovations in the medical field. Gain real-world experience through industry placements, work-integrated learning projects and overseas student exchange opportunities.
PREREQUISITES	Units 3 and 4: a study score of at least 25 in English (EAL) or at least 20 in English other than EAL.
INTAKE	Semester 1 & 2
DURATION	4.5 years
MAJORS	Accounting, Business analytics, Cancer, heart and brain diseases, Economics, Finance, Immunology and infectious disease, Management, Marketing, Molecular and cellular biochemistry, Physiology and pharmacology
CAREER PATHS	<ul style="list-style-type: none"> – Biomedical researcher – Biotechnologist – Accountant – Financial advisor – Project manager

ATAR	84.75
ASPIRE ATAR	65.00

BACHELOR OF COMMERCE/BACHELOR OF COMPUTER SCIENCE [Ⓢ]

MEL

OVERVIEW	Take advantage of the interconnected worlds of commerce and technology. You'll develop a comprehensive understanding of the principles underpinning the tech market, as well as the scientific principles behind computer hardware and software. You'll explore topics such as programming, mathematics, statistics and data analytics. Then you'll apply what you've learned through industry placements, work-integrated learning projects and overseas student exchange opportunities.
PREREQUISITES	Units 3 and 4: a study score of at least 25 in English (EAL) or at least 20 in English other than EAL. Units 3 and 4: a study score of at least 20 in any Mathematics.
INTAKE	Semester 1 & 2
DURATION	4 years
MAJORS	Accounting, Artificial intelligence, Business analytics, Cloud analytics, Data science, Economics, Finance, Management, Marketing, Software engineering
CAREER PATHS	<ul style="list-style-type: none"> – Systems analyst – Full stack web developer – Business analyst – Big data engineer – Financial advisor

ATAR	80.75
ASPIRE ATAR	65.00

BACHELOR OF COMMERCE/BACHELOR OF GLOBAL STUDIES [Ⓢ]

MEL

OVERVIEW	Explore the complex social, commercial and sustainability challenges faced by multinational corporations and diverse communities. Co-designed with industry leaders, our double degree gives you a strong grounding in the issues facing key regions and countries around the world. Understand global problems and policy responses, and how to develop tools to tackle the challenges of the future. Choose from a range of majors, then apply what you've learned through an industry placement, work-integrated learning project or overseas exchange. Be prepared for the globalised world and complex web of relationships negotiated by governments and multinationals.
PREREQUISITES	Units 3 and 4: a study score of at least 25 in English (EAL) or at least 20 in English other than EAL.
INTAKE	Semester 1 & 2
DURATION	4 years
MAJORS	Accounting, Asian politics and security, Business analytics, Chinese studies, Conflict and negotiation, Economics, Finance, French studies, Government and policy, Greek studies, Hindi studies, Human rights, International relations, Italian studies, Japanese studies, Management, Marketing, Spanish studies, Sustainability and development
CAREER PATHS	<ul style="list-style-type: none"> – International diplomacy – Politics and government – International trade specialist – International development – Human rights advocacy

ATAR	80.15
ASPIRE ATAR	65.00

PLEASE SEE WEBSITE FOR DETAILS

First Nations Australian entry | [Ⓢ] Aspire Community Impact | [Ⓢ] Aspire Everyday Impact | [Ⓢ] Aspire Academic Impact | **NA** ATAR not applicable | **NP** ATAR not published | **R** Regional Benefits Program | **RE** Regional entry



FEATURE COURSE

BACHELOR OF COMMERCE ©

OVERVIEW	Designed for ambitious and future-focused students, you'll learn the latest in commercial technologies such as automation, AI and big data, then apply it in the real world through industry placements, work-integrated learning projects and overseas student exchange opportunities. You'll choose from six primary majors, have the flexibility to study an additional major, or add a double degree in law, arts, health sciences, computer science, science or psychological science. Depending on your major, you'll graduate ready to apply for membership to a range of professional business associations.
PREREQUISITES	Units 3 & 4: a study score of at least 25 in English (EAL) or at least 20 in English other than EAL.
INTAKE	Semester 1 & 2
DURATION	3 years
MAJORS	Accounting, Business analytics, Economics, Finance, Management, Marketing
CAREER PATHS	<ul style="list-style-type: none"> - Business analyst - Client advisor or stockbroker - Digital media developer - Financial or forensic accountant - Management consultant

	MEL
ATAR	70.85
ASPIRE ATAR	65.00



Did you take part in any opportunities?

As part of my finance major, I represented La Trobe at the CFA Institute Research Challenge, which is an annual global competition. The experience was great, I had the opportunity to connect with other finance students, gain insights into the real-world industry and enhance my resume.

Shristi

Bachelor of Psychological Science and Bachelor of Commerce

Highlight from your time at uni?

My number one highlight from my time at La Trobe has been connecting with like minded students and expanding my network.

BACHELOR OF COMMERCE/BACHELOR OF HEALTH SCIENCES ©

MEL

OVERVIEW	Develop valuable skills in business and health while remaining grounded in an entrepreneurial core. Analyse the complex challenges confronting business and society, as well as emerging developments in the field of health sciences. Develop cultural intelligence, leadership skills, stakeholder negotiation and communication skills that help you to thrive in any work environment. Choose from a range of majors and minors to build a unique set of multidisciplinary skills. Gain real-world experience by learning from industry experts, industry placements, work-integrated learning projects or overseas exchange opportunities.
PREREQUISITES	Units 3 and 4: a study score of at least 25 in English (EAL) or at least 20 in English other than EAL.
INTAKE	Semester 1 & 2
DURATION	4 years
MAJORS	Accounting, Allied health, Business analytics, Digital health, Economics, Environmental health, Finance, Food and nutrition, Health promotion, Health, wellbeing and performance, Management, Marketing, Psychological science, Public health, Rehabilitation counselling
CAREER PATHS	<ul style="list-style-type: none"> – Public health manager – Economist – Health promotion advisor – Financial advisor – Sustainability specialist

ATAR	80.40
ASPIRE ATAR	65.00

BACHELOR OF COMMERCE/BACHELOR OF PSYCHOLOGICAL SCIENCE ©

MEL

OVERVIEW	Co-designed with industry leaders, our accredited course gives you commercial knowledge and skills, as well as a deep understanding of the human mind. Understand what drives human choices and how businesses can meet consumer needs. Establish a grounding in psychology, exploring theories on individuals, groups and whole societies. Learn how experiences and incentives impact individual and group behaviour and how this knowledge can be applied in business to create better systems and solutions for people and the planet.
PREREQUISITES	Units 3 and 4: a study score of at least 25 in English (EAL) or at least 20 in English other than EAL.
INTAKE	Semester 1 & 2
DURATION	4 years
MAJORS	Accounting, Business analytics, Economics, Finance, Management, Marketing
CAREER PATHS	<ul style="list-style-type: none"> – Public health worker – Management consultant – Market researcher – Policy advisor – Psychologist*

ATAR	80.90
ASPIRE ATAR	65.00

* Requires completion of further psychology education.

BACHELOR OF COMMERCE/BACHELOR OF SCIENCE ©

MEL

OVERVIEW	Explore how the world of science interacts with the commercial sphere, and how to build business structures that power scientific innovation. Develop critical capabilities in independent research, innovative thinking, cultural intelligence, oral and written communication, teamwork and leadership. Gain a multidisciplinary set of skills and knowledge sought after by employers and policymakers – from learning how to successfully manage research and development projects to commercialising intellectual property from a scientific breakthrough. Choose from majors in both commerce and science, as well as open access majors from across the University.
PREREQUISITES	Units 3 and 4: a study score of at least 25 in English (EAL) or at least 20 in English other than EAL. Units 3 and 4: a study score of at least 20 in any Mathematics.
INTAKE	Semester 1 & 2
DURATION	4 years
MAJORS	Accounting, Applied cybersecurity, Artificial intelligence, Biochemistry, Botany, Business analytics, Chemistry, Crop science, Data science, Ecology, Economics, Finance, Genetics, Human physiological sciences, Management, Marketing, Mathematics, Microbiology, Physics, Psychological science, Statistics, Zoology
CAREER PATHS	<ul style="list-style-type: none"> – Business analyst – Chemist – Data scientist – Economist – Geneticist

ATAR	83.35
ASPIRE ATAR	65.00

BACHELOR OF CYBERSECURITY/BACHELOR OF COMMERCE ©

MEL

OVERVIEW	Learn how to shield companies and whole nations from malicious online threats and build the skills to run a successful enterprise. Co-designed with industry leaders, our course gives you a multidisciplinary set of skills and knowledge sought-after by employers and policymakers, such as cybersecurity fundamentals, financial management, strategic and crisis communications, programming and cyber algorithms, and economic analysis and innovation. When you graduate, you'll be ready to be an effective leader who can meet the challenges of automation, AI-driven technologies and big data.
PREREQUISITES	Units 3 and 4: a study score of at least 25 in English (EAL) or at least 20 in English other than EAL.
INTAKE	Semester 1
DURATION	4 years
MAJORS	Accounting, Business analytics, Economics, Finance, Management, Marketing
CAREER PATHS	<ul style="list-style-type: none"> – Ethical hacker – Security architect – Business analyst – Cybersecurity policy advisor – Project manager

ATAR	NP
ASPIRE ATAR	65.00

PLEASE SEE WEBSITE FOR DETAILS

First Nations Australian entry | © Aspire Community Impact | © Aspire Everyday Impact | © Aspire Academic Impact | NA ATAR not applicable | NP ATAR not published | R Regional Benefits Program | RE Regional entry



BACHELOR OF LAWS (HONOURS)/BACHELOR OF BUSINESS ©

BEN

OVERVIEW	Advance with a prestigious double degree that prepares you to be successful in agribusiness, sports industries, and the digital economy. Be prepared for the modern-day business world where digital and operational disruption continues to reshape the global business landscape. You'll study digital skills while developing transferable leadership, communication, and critical thinking skills. You'll be equipped to undertake market and business research, interpret financial documents, work in diverse teams and use data analysis. You'll also learn skills such as advocacy, negotiation, and dispute resolution, making you a highly valued addition to any team.
PREREQUISITES	Units 3 and 4: a study score of at least 30 in English (EAL) or at least 25 in English other than EAL.
INTAKE	Semester 1
DURATION	5 years
MAJORS	Agribusiness, Digital business, Management, Marketing
CAREER PATHS	<ul style="list-style-type: none"> - Conveyancer - In-house counsel - Barrister or solicitor - Corporate consultant - Management consultant

ATAR	82.50
ASPIRE ATAR	70.00

BACHELOR OF LAWS (HONOURS)/BACHELOR OF COMMERCE ©

MEL

OVERVIEW	Gain a prestigious double degree that prepares you to be a change-maker in business and law. Develop a sophisticated understanding of legal process, advanced negotiation, and complex legal and regulatory frameworks that will give you an edge in commercial settings and corporate legal practice. Build key skills in dispute resolution, negotiation and mediation. Develop cultural intelligence, leadership skills, stakeholder negotiation and communication skills. Hone your skills in financial literacy, master digital business tools, and have opportunities to learn in legal placements across government and corporate sectors.
PREREQUISITES	Units 3 and 4: a study score of at least 30 in English (EAL) or at least 25 in English other than EAL.
INTAKE	Semester 1 & 2
DURATION	5 years
MAJORS	Accounting, Business analytics, Economics, Finance, Management, Marketing
CAREER PATHS	<ul style="list-style-type: none"> - Corporate lawyer - Management consultant - Financial advisor - Business analyst - Sustainability and ethics advisor

ATAR	90.75
ASPIRE ATAR	78.00

DIPLOMA IN BUSINESS © ⓘ

MEL BEN ONL

OVERVIEW	Our Diploma in Business is your pathway into a business degree and a versatile career. After successfully completing your Diploma, you'll earn up to one year's worth of course credit if you transfer into the Bachelor of Business.
PREREQUISITES	Units 3 & 4: a study score of at least 25 in English (EAL) or at least 20 in English other than EAL.
INTAKE	Semester 1 & 2
DURATION	1 year
CAREER PATHS	<ul style="list-style-type: none"> - Human resource advisor - Finance officer - Executive assistant - Office manager

ATAR	NA	NA	NA
-------------	----	----	----

DIPLOMA OF ELITE SPORT BUSINESS © ⓘ

CAR

OVERVIEW	Delivered at the Carlton College of Sport at Ikon Park, home of the Carlton Football Club, the Diploma of Elite Sport Business gives you the business knowledge, hands-on experience and networking opportunity to succeed in this evolving industry. Students are immediately immersed in an elite sport environment, with a commitment from the Carlton Football Club to deliver students enrolled in the Diploma of Elite Sport Business the opportunity to complete 100 hours placement with the Club and its partners or networks.
PREREQUISITES	Units 3 & 4: a study score of at least 25 in English (EAL) or at least 20 in English other than EAL.
INTAKE	Semester 1
DURATION	1 year
CAREER PATHS	<ul style="list-style-type: none"> - Carlton Football Club graduate role* - Sport administration - Sport marketing

ATAR	NA
-------------	----

* Graduate roles at the Carlton Football Club are competitive and limited.

CAR Carlton College of Sport. See website for details.

The La Trobe website includes complete entry requirements, including extra requirements, information on subject adjustments and requirements for non-Year 12 students. The availability of displayed majors may differ depending on campus and semester intake. ATAR data within this publication is based on the lowest selection rank (ATAR plus any adjustment factors) and is correct as of VTAC's January 2026 offer round. For more information, see latrobe.edu.au/courses. Aspire ATARs published are based on entry for Semester 1, 2026 and subject to change. For more information on the Aspire Early Offer Program and how to access the Aspire ATAR, see latrobe.edu.au/aspire. Some courses have alternative application options for regional and First Nations students – these courses are noted. For more information on how to apply, see the VTAC website.

PLEASE SEE WEBSITE FOR DETAILS

ⓘ First Nations Australian entry | © Aspire Community Impact | ⓘ Aspire Everyday Impact | ⓘ Aspire Academic Impact | NA ATAR not applicable | NP ATAR not published | Ⓜ Regional Benefits Program | RE Regional entry

SECURE YOUR SPOT ACROSS TWO COURSES

AT LA TROBE, WE'VE BUNDLED SOME OF OUR MOST POPULAR COURSES INTO PACKAGED OFFERS. ONCE YOU'VE RECEIVED AN OFFER INTO YOUR PREFERRED PACKAGE, A PLACE IN YOUR DREAM DEGREE IS LOCKED IN.

Undergraduate packaged offers

Start with a Diploma or Associate degree, then transition into the second or third year of your Bachelor's course.

Diploma in Business

- > Bachelor of Accounting
 - > Bachelor of Business
 - > Bachelor of Business Analytics
-



Admission into the postgraduate component of the package offer is conditional on meeting the minimum selection and admission criteria for the postgraduate award. Admission into the Bachelor's component of the packaged offer is conditional on passing all Diploma subjects. See website for campus availability and full terms and conditions.

Majors

As a La Trobe student, building a mix of majors, minors and electives is almost unlimited. Choose subjects from across the university – besides business options, you can study subjects from arts, IT, health and more.

Accounting

Agribusiness

Business analytics

Digital business

Economics

Finance

Human resource management

International business

Management

Marketing

Tourism and event management



WAYS INTO YOUR DEGREE



Pathways

If you didn't get the ATAR you wanted, or you aren't ready to start a degree right away, a great option is to start a pathway course then transfer later, provided you meet the entry requirements.

Some of our pathway options¹ include:

- Studying a different Bachelor's degree with lower entry requirements then transferring.
- Studying a two-year Associate degree with lower entry requirements then transferring.
- Studying a one-year Diploma then using that credit to transfer into an eligible Bachelor's degree.
- Completing a Certificate or Diploma at TAFE or VET then transferring.
- Studying a Diploma or Certificate at La Trobe College and gaining second year entry into a Bachelor's degree without an ATAR.
- Studying a course package to secure a spot and gaining advanced standing into a Bachelor degree.

Entry programs and adjustments

Boost your application to La Trobe with programs and adjustments that can change your score or offer an alternative entry score.

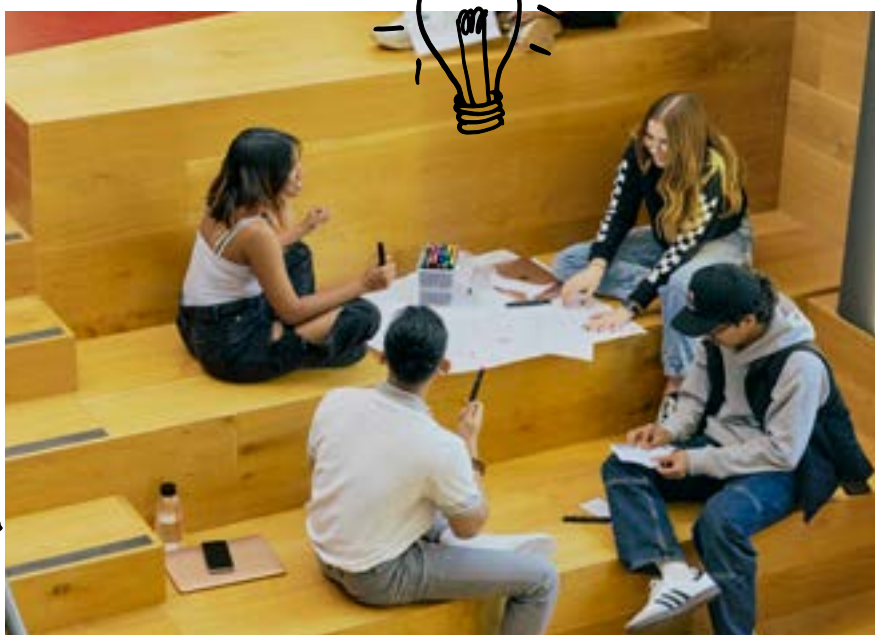
- Achieve Plus, higher education studies
- Aspire Early Offer Program
- Elite Athlete ATAR adjustment
- Regional Benefits Program
- VTAC Access and Equity Adjustment (SEAS)

Tertiary Preparation Program (TPP)

Not a Year 12 student or don't have an ATAR? Our TPP unlocks access to our courses while helping you build skills for success at university. The TPP is a free, online course that fits around your commitments.

Undergraduate certificates

Kick off your uni study with our new undergraduate certificates in areas like IT and health – no ATAR required.



1. Eligibility for transfer will depend on successful completion of certain subjects, consult a course advisor for more information on your options. Credit transfer subject to conditions.

ASPIRE EARLY OFFER PROGRAM



With Aspire, you'll have the opportunity to get an early conditional offer for a wide range of our courses² across our campuses before finishing Year 12. We have three streams to choose from, so if you've given back to your community, done well in Year 11, or have a strong drive to make a future impact, you could secure a spot in your dream course before finishing Year 12. Applications open 1 April 2026 and close 4 September 2026.

You'll also gain access to study support like ATARNotes+ as well as access to apply for exclusive scholarships and more.

* Community Impact

Aspire Community Impact rewards Year 12 students for their volunteering or community contribution with an Aspire ATAR.

* Academic Impact

Aspire Academic Impact enables Year 12 students to leverage their Year 11 results to secure an early conditional offer into a range of undergraduate courses – no ATAR required.

* Everyday Impact

Aspire Everyday Impact gives Year 12 students with the drive to make an impact a direct pathway into undergraduate studies – no ATAR required.



² Some courses in the Aspire program are capped and remain competitive.

APPLYING TO STUDY AT LA TROBE



How to apply

Find your course: Browse by discipline at latrobe.edu.au/study or search by ATAR.

🔍 [La Trobe courses](#)

Use the ATAR calculator: If you're applying as a Year 12 student, use your real or estimated ATAR score to find courses that match your interest.

🔍 [La Trobe ATAR calculator](#)

Explore entry options: Use our ATAR adjustment calculator to estimate any boosts to your ATAR or explore entry and pathway options.

🔍 [Pathways & entry La Trobe](#)

Prepare to apply: Visit our Year 12 Hub to guide you through all the steps for making the right study choices.

🔍 [Choose La Trobe](#)

Your guide to preferences

Want to know how to submit your preferences? Prepare ahead with our guide to submitting your preferences.

🔍 [La Trobe VTAC applications](#)

Not in Year 12?

For most of our courses, you can apply directly to La Trobe online. For select undergraduate courses, or if you're applying for multiple courses, you'll apply via the Victorian Tertiary Admissions Centre (VTAC) or the Universities Admissions Centre (UAC).

Scholarships

We offer a range of scholarships that reward your academic, sporting or leadership achievements, or provide support to students experiencing financial difficulties, personal hardships or who come from underrepresented backgrounds.

For an eligible student studying business, finance, commerce or law, the Greg Ellis Memorial Bursary provides a one-off payment.

The information on this page is meant for domestic students only. You are considered a domestic student if you are an Australian or New Zealand citizen, Australian permanent resident, or permanent humanitarian visa holder. Information on how to apply as an international student can be found online at latrobe.edu.au/study/apply/international. VTAC typically opens for applications in August of each year.



At the La Trobe Business School, we focus on delivering business education and research informed by the needs and aspirations of our students, industry, government and communities. Our work is grounded in practical application, collaboration and social relevance.

Our programs are designed to be flexible, engaging and student-focused. We emphasise problem-based learning and critical thinking, using authentic assessment to support students in applying their knowledge in practical contexts, including through work-integrated learning and industry partnerships.

We are committed to supporting our students to thrive academically, professionally and personally, and to making a meaningful contribution to business and society.

Professor Suzanne O’Keefe
Dean, La Trobe Business School

JOIN US AT OPEN DAY 2026 *

Explore your study options, chat with current students and teachers, tour our campuses, and discover what it's really like to study at La Trobe.

Melbourne (Bundoora)

Sunday 2 August

Shepparton

Sunday 9 August

Mildura

Wednesday 12 August

Albury-Wodonga

Sunday 16 August

Bendigo

Sunday 23 August

latrobe.edu.au/openday



TAKE THE NEXT STEP

Visit the Hub

choose.latrobe.edu.au

Live chat

latrobe.edu.au/chat

Call us

1300 135 045

Book a consult

consultation.latrobe.edu.au

Ask us a question

latrobe.edu.au/ask-us

STAY CONNECTED

Instagram

@latrobeuni

Facebook

La Trobe University

TikTok

@latrobeuni

X

@latrobe

LinkedIn

La Trobe University

latrobe.edu.au



LA TROBE
UNIVERSITY

Disclaimer: The information contained in this publication is indicative only. While every effort is made to provide full and accurate information at the time of publication, the University does not warrant the currency, accuracy or completeness of the contents. The University reserves the right to make changes without notice, at any time in its absolute discretion, including but not limited to varying admission or assessment requirements, or varying or discontinuing any course or subject. To the extent permitted by law, the University does not accept responsibility for any loss or damage occasioned by use of any of the information contained in this publication. For course information updates, please visit: latrobe.edu.au/courses

La Trobe University is a registered provider under the Commonwealth Register of Institutions and Courses for Overseas Students (CRICOS), La Trobe University CRICOS Provider Code Number 00115M, TEQSA PRV12132; Provider Category: Australian University.

Published by La Trobe University, May 2026 – DC42293.



ACKNOWLEDGEMENT OF COUNTRY

La Trobe University acknowledges our campuses are located on the lands of many Traditional Custodians in Victoria and New South Wales.

We recognise their ongoing connection to the land and value their unique contribution to the University and wider Australian society.

La Trobe University is committed to providing opportunities for Aboriginal and Torres Strait Islander people, both as individuals and communities, through teaching, learning, research and partnerships across all our campuses.

Wurundjeri

Melbourne (Bundoora & City)

Dja Dja Wurrung

Bendigo

Yorta Yorta

Shepparton

Dhudhuroa/Waywurru

Albury-Wodonga

Latji Latji

Mildura

Gadigal

Sydney