



CAREER NETWORK UPDATE

OVERVIEW

- Change of Preference Festival
- Change of Preference Support and FAQs
- Year 12 Hub
- Pathways
- Course updates and features:
- Bachelor of Biomedicine
- Bachelor of Biomedical Science
- La Trobe Business School
- Science at La Trobe
- Engineering at La Trobe
- Study Course packages

NEW \$5BN 'UNI CITY' PRECINCT AND INFRASTRUCTURE UPGRADES

Melbourne's booming northern suburbs are gearing up for a massive economic transformation as regional leaders unveil an ambitious, multi-billion-dollar infrastructure wishlist. Designed to support a population explosion tipped to hit 1.5 million by 2036, the proposal aims to unlock unprecedented jobs and growth.

The centrepiece, put forward by the powerful North Link coalition, is a colossal \$5 billion 'University City' precinct and will be anchored by La Trobe University's Bundoora Campus.

This massive innovation and sustainability hub is pitched as the key to securing world-class services close to home. The transformative plan also prioritises critical public works: an electrified rail extension to Wallan and Wollert, urgent expansion of the Hume Freeway, a major new outer north hospital, and a \$300 million revitalisation of the Kangan Institute. North Link is urging the Victorian Government to invest immediately, capitalising on this once-in-a-generation opportunity.

[Find out more](#)

UPCOMING EVENTS

Change of preference Festival
Thursday 11 December 2025
[Register now](#)

Health Careers Days (Bendigo)
Monday 8 December 2025
[Register now](#)

On-Demand Undergrad Webinars
[Explore webinars](#)

[Learn more](#)





GAME-CHANGING DISCOVERY: LA TROBE UNLOCKS CELL DEATH SECRET

A groundbreaking revelation from La Trobe University is poised to redefine the fight against infectious and autoimmune diseases. Scientists have cracked the code on a critical and previously unknown step in the cell death process, identifying a 'Footprint of Death'—a tell-tale residue left by self-destructing cells.

This residue contains new-to-science extracellular vesicles, or F-ApoEVs, which normally act as vital signals for the immune system to swiftly clean up cellular debris.

The astonishing find? Viruses, including influenza, are cunningly hijacking this process, hiding their particles inside the F-ApoEVs to stealthily spread infection! This discovery exposes a viral Achilles' heel. By understanding how to disrupt this 'Trojan Horse' strategy, researchers are now on the cusp of developing next-generation therapies to better harness the immune system and stop infection in its tracks. A true game-changer for medicine.

Research published in Nature communications.

[Learn more](#)

CHANGE OF PREFERENCE FEST



REGISTER NOW

**11 DECEMBER
12PM–3PM
BUNDOORA CAMPUS
SIMPSON LAWN**

Chat with our course advisors and student support team about your next steps.

Bring your friends and family along to enjoy free food, exciting giveaways and live music.

Our Future Students Centre will have extended opening hours for all enquiries over the Change of Preference period. **See opening hours below.**

CHANGE OF PREFERENCE STUDENT SUPPORT

CALL OR CHAT WITH US

11 – 12 December
7am – 6pm

13 December
9am – 12pm

Call
1300 135 045

Chat
latrobe.edu.au/contact/chat

DROP-IN CONSULTATION

12 December
9am – 4pm

Speak with a course advisor,
no appointment required.

Future Student
Centre Shop 4
Agora
Bundoora Campus

BOOKED 1:1 CONSULTATIONS

Would you like a dedicated time
to speak with a course advisor?

Book a scheduled consult time:



**LA TROBE
UNIVERSITY**

CHANGE OF PREFERENCE SUPPORT & FAQs

With the year coming to a close, Change of Preference (COP) is just around the corner. To better prepare you with the tools you need to support your students during COP, we have created several resources on the career practitioner page to assist during the busy period. In addition, we will have several in-person support opportunities for your students at each of our campus across the COP period.

Future Students Centre

The Future Students Centre will also have extended hours over Change of Preference to support students.

11–12 December: 7am – 6pm

13 December: 9am – 12pm

Phone: 1300 135 045

Live chat

Book a consultation

[Find out more](#)



PATHWAYS AT LA TROBE

We know that Change of Preference is an important but stressful time for students. That's why it's important to understand all course options and pathways, and to get the best advice. The La Trobe Pathways Tool offers multiple resources to help students explore different routes to achieving their goals and make informed decisions about their future.

Pathway tools include:

- ATAR Calculator
- ATAR Adjustment Factor Calculator
- Find a course
- Entry Program Finder
- Pathway articulations

Students may also visit the Year 12 Hub for further support leading into the Change of Preference period.

[Find out more](#)



[Learn more](#)





COURSE FEATURE

BACHELOR OF BIOMEDICINE

ENTRY REQUIREMENTS

ATAR: 60.1 (Melbourne)

2025 lowest selection rank (including adjustment factors) based on the final 2025 ATAR profile

PREREQUISITES

VCE: Units 3 and 4: a study score of at least 25 in English (EAL) or at least 20 in English other than EAL.

ABOUT

Get the technical and applied expertise you need to establish your biomedical career with La Trobe's Bachelor of Biomedicine.

Start with how the body works as you build fundamental knowledge in chemistry, bioscience and health. Take a close look at infectious diseases, including the factors that drive epidemics and pandemics. Then tailor your degree with a combination of up to two majors or electives aligned to your personal career goals and industry demand.

By completing La Trobe's Bachelor of Biomedicine, you will:

- develop strong foundational knowledge in topics such as biochemistry, molecular and cell biology, human physiology, infectious and non-communicable disease
- choose from majors in cancer, heart and brain diseases; immunology and infectious disease; physiology and pharmacology; or molecular and cellular biochemistry
- gain hands-on experience from day one with lab work, internship opportunities, overseas exchange opportunities and more
- be prepared for your future career at every stage of the course, with the flexibility to exit early with a Diploma after one year or an Associate Degree after two years
- graduate with your majors on your academic transcript and a pathway to specialist postgraduate studies in research, medicine, physiotherapy and more.



STUDENT SPOTLIGHT

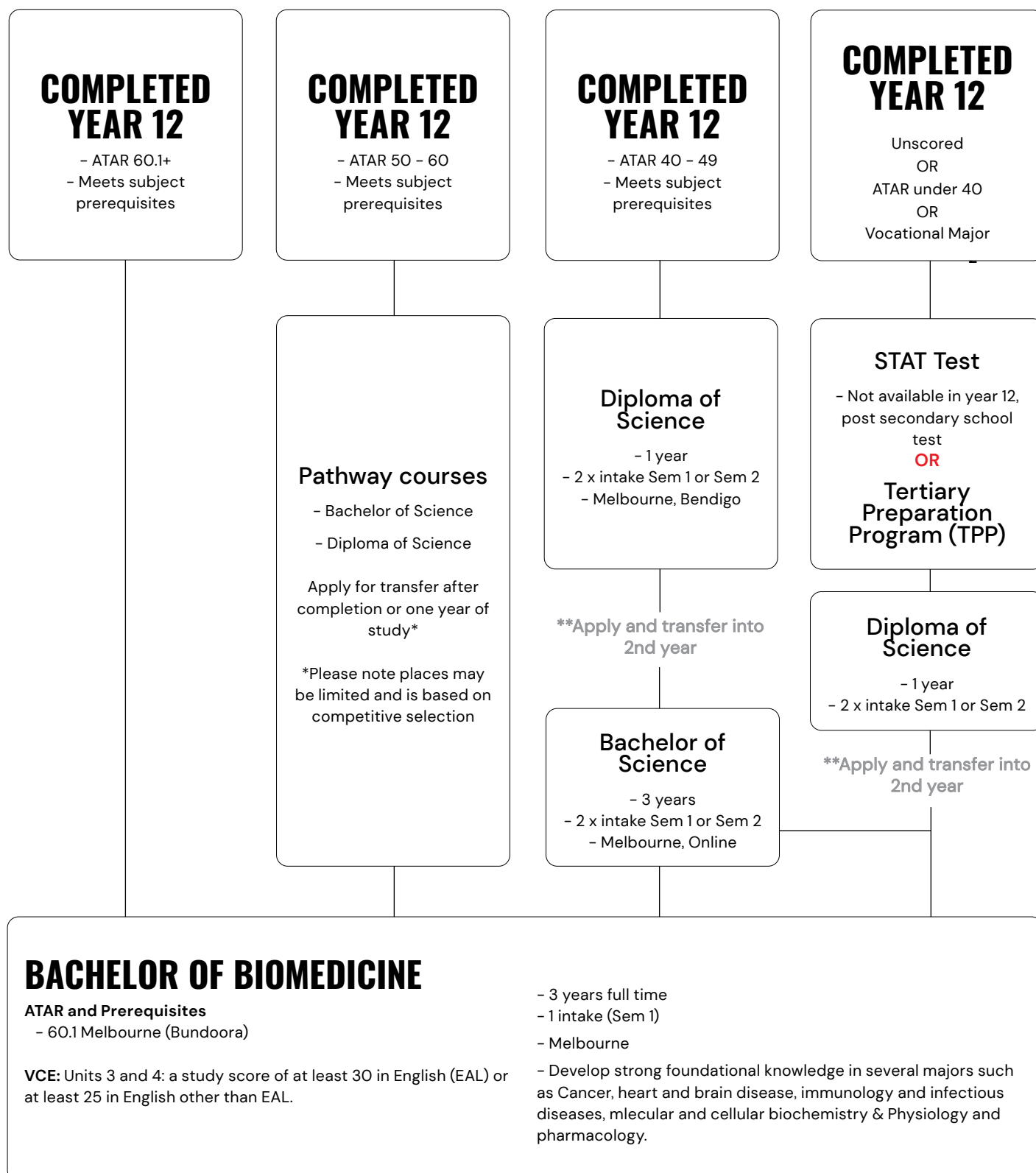
'La Trobe is a very nurturing university and environment. La Trobe has provided an easy transition into university life – moving away from home can be overwhelming and I'm grateful for the support..'

Abigail – Bachelor of Biomedicine



CAREER PATHWAYS

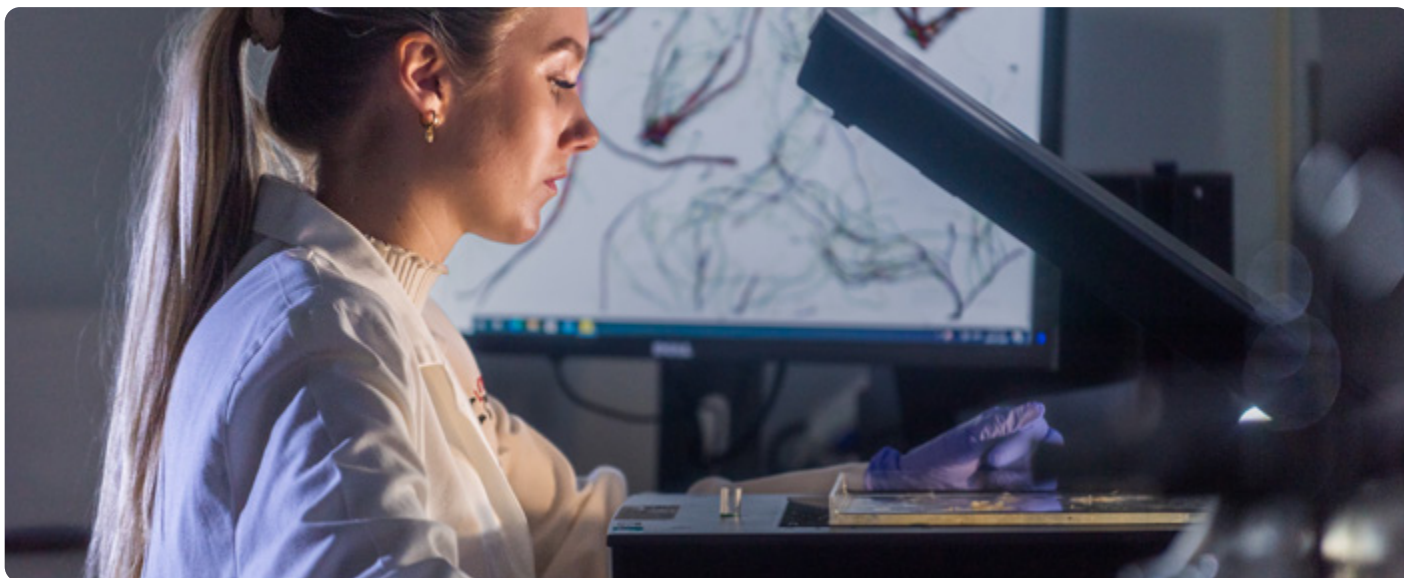
TO BECOMING A BIOCHEMIST AND MORE



*Please note there may also be other pathways available, depending on your prior education pathways

**Correct at time of printing, please see the La Trobe University website or contact 1300 135 045 for the most up to date information





CAREER OUTCOMES

BIOMEDICAL RESEARCHER

Salary range: \$70,000 to \$95,000+

5-year job growth trend: 8.4%

AU Job listings: 824

Course pathway: Bachelor of Biomeidicine

MICROBIOLOGIST

Salary range: \$75,000 to \$85,000

5-year job growth trend: 3.4%

AU Job listings: 498

Course pathway: Bachelor of Biomeidicine

BIOTECHNOLOGIST

Salary range: \$70,000 to \$95,000+

5-year job growth trend: N/A

AU Job listings: 628

Course pathway: Bachelor of Biomeidicine

CLINICAL RESEARCH ASSOCIATE

Salary range: \$85,000 to \$120,000+

5-year job growth trend: N/A

AU Job listings: 408

Course pathway: Bachelor of Biomeidicine

BIOCHEMIST

Salary range: \$75,000 to \$80,000+

5-year job growth trend: N/A

AU Job listings: 513

Course pathway: Bachelor of Biomeidicine

REGULATORY AFFAIRS OFFICER

Salary range: \$150,000 to \$220,000

5-year job growth trend: N/A

AU Job listings: 1020

Course pathway: Bachelor of Biomeidicine *

*May require additional study

Roles and salaries are estimates derived from Seek and should be used as a guide only

Learn more



A photograph of a modern lecture hall with tiered wooden seating. In the foreground, a young woman with long dark hair, wearing a white ribbed sweater, is sitting and looking at a laptop. Next to her, a young man with curly brown hair, wearing a dark blue t-shirt with a white logo, is also looking at the laptop and pointing at the screen. In the background, several other students are sitting on the tiered seating, some using laptops. The room has large windows and modern lighting.

COURSE PACKAGES AT LA TROBE

YEAR 12 STUDENTS WANTING TO GAIN A COMPETITIVE EDGE CAN PREFERENCE PACKAGES NOW FOR SEMESTER 1, 2026 INTAKE.

Students can get ahead of the pack with our new undergraduate-to-postgraduate study packages. Course packages provide students with pathways to their dream course or career by securing their spot in not one – but two courses.

Why choose a course package?

- Our Bachelor-to-postgraduate course packages provide students with security to lock in their study roadmap.
- Students graduate with more qualifications, additional expertise, and better career and earning prospects.
- Adding a postgraduate qualification can set them apart from other graduates and help them land their dream job.
- Instead of a double degree, students can graduate with a more advanced qualification for less (or the same) time.



Find out more



COURSE FEATURE

AND UPDATES

BACHELOR OF BIOMEDICAL SCIENCE

ENTRY REQUIREMENTS

ATAR:

59.05 Bendigo

62.00 Albury Wodonga

2025 lowest selection rank (including adjustment factors) based on the final 2025 ATAR profile

PREREQUISITES

VCE: Units 3 and 4: a study score of at least 25 in English (EAL) or at least 20 in English other than EAL.

ABOUT

Turn your passion for human biology into a dynamic career! Gain hands-on experience through lab work, research, and industry placements while building expertise in chemistry, biotechnology, pharmacology, physiology, and more. Customize your degree to suit your goals in healthcare, education, research, and beyond, and unlock pathways to advanced studies in fields like medicine, physiotherapy, and dentistry. Make a real impact on health and wellbeing with a deep understanding of the human body.

- Gain practical experience through lab work, research, and industry placements
- Develop expertise in chemistry, biotechnology, clinical biochemistry, pharmacology, physiology, and immunology
- Customize your degree for careers in healthcare, education, media, and research
- Graduate with a comprehensive understanding of the human body to support health and wellbeing innovations
- Access pathways to specialist postgraduate studies in physiotherapy, speech pathology, medicine, dentistry, and more



STUDENT SPOTLIGHT

'As a type-one diabetic since age four, I experienced pediatricians genuinely caring for patients. This Inland Rail scholarship provides financial stability to pursue the best education and establish myself as a paediatrics specialist in regional Wodonga. Scholarships support people staying in their communities to study and work locally.'

Madeline – Bachelor of Biomedical Science

[Learn more](#)



LA TROBE BUSINESS SCHOOL

BUSINESS AND COMMERCE

At La Trobe, our business courses equip you with the skills to drive business success in the digital era, with majors, electives and specialisations designed to help you thrive in any evolving industry.

NEW AND REFRESHED

La Trobe Business School unveiled a comprehensive refresh to its business suite, featuring innovative course structures, AI-integrated learning and industry-aligned majors, designed to meet the evolving demands of today's job market. La Trobe is evolving to become a leader in future-focused business education. Our programs are designed to give students the practical skills and industry knowledge employers are looking for, so they graduate ready to succeed in the real world."

- With a future-focused AI-integrated curriculum, students gain critical skills in business modelling, generative AI and contemporary management.
- The courses will also place a strong emphasis on entrepreneurship and leadership, preparing students to lead teams, drive innovation or start their own businesses with the new subjects added to the course architecture.
- The program fosters personalised learning with smaller class sizes, ensuring closer connections with lecturers and more individual support.
- Through industry placements and real-world projects, students gain practical experience and build valuable networks.

BACHELOR OF ACCOUNTING
BACHELOR OF BUSINESS
BACHELOR OF BUSINESS ANALYTICS
BACHELOR OF COMMERCE

INDUSTRY-ALIGNED MAJORS

Several majors have been altered to align with the new undergraduate course architecture, to enhance curriculum coherence, reduce duplication and better prepare graduates for industry needs. New subjects have also been added and replaced to various majors, improving alignment with the new enhanced course architecture:

Accounting
Agribusiness
Business Analytics
Digital Business
Economics
Finance

Human Resource Management
International Business
Management
Marketing
Tourism and Event Management

[Learn more](#)





SCIENCE AT LA TROBE

BACHELOR OF SCIENCE

ENTRY REQUIREMENTS

ATAR:

59.75 Bendigo

60.25 Melbourne (Bundoora)

2025 lowest selection rank (including adjustment factors) based on the final 2025 ATAR profile

PREREQUISITES

VCE: Units 3 and 4: a study score of at least 25 in English (EAL) or at least 20 in English other than EAL.

Units 3 and 4: a study score of at least 20 in any Mathematics.

ABOUT

La Trobe's Bachelor of Science provides foundational skills and the freedom to pursue your passions—from protecting endangered species to developing disease treatments or combating climate change. Learn from leading academics and researchers while building problem-solving, communication, and collaboration skills highly valued by employers. Personalize your degree by choosing from diverse majors including botany, statistics, microbiology, genetics, and data science. Put theory into practice through work placements with industry partners like CSIRO, Bayer Crop Science, and State and Federal Government departments, gaining real-world experience that prepares you for your dream science career.

You'll learn:

Professional scientific thinking

- Learn how science contributes new knowledge and finds solutions to problems in our society.

Communicating as a professional scientist

- Gain experience communicating to a range of audiences, both in written and verbal formats.

Lab and fieldwork skills

- Learn how to collect data and use specialist technical skills to develop new findings in the laboratory and in the field.

Problem-solving and facing new challenges

- Learn to develop solutions to complex scientific problems.

Collaboration and working in teams

- Collaborate and work effectively in teams to solve problems and achieve shared goals.

Professional conduct and professional identity

- Learn about ethical conduct when working as a scientific professional and how to promote and communicate your professional identity to potential employers and peers.

[Learn more](#)



ENGINEERING AT LA TROBE

WHY STUDY ENGINEERING AT LA TROBE?

ENTRY REQUIREMENTS

BACHELOR OF CIVIL ENGINEERING (HONOURS)

ATAR:

64.40 Bendigo

60.15 Melbourne (Bundoora)

PREREQUISITES

VCE: Units 3 and 4: a study score of at least 25 in English (EAL) or at least 20 in English other than EAL.

Units 3 and 4: a study score of at least 20 in one of Maths: General Mathematics, Mathematical Methods or Specialist Mathematics.

**Use as a guide only. This ATAR was created in January 2025 and may change for 2026 entry*

ABOUT

- Upskill to meet the demands of technology and innovation
- Love where you learn
- Work and learn in innovative learning spaces and collaborative labs for engineering, computer science and cybersecurity with 24/7 access.
- The human element of technology, you'll need human skills to adapt and thrive in your career.

At La Trobe, you'll graduate ready to work in traditional and emerging industries. Build strong foundations, an innovative mindset and professional experience. Placements and projects to brag about. Develop your skills with practical work placements at major companies like Telstra, BMW and Boral. Develop and deliver the kind of projects that end up on your CV. You could design a self-transforming robot or develop a climate prediction tool. With experiences like these, you'll graduate confident with on-the-job experience and strong professional networks.

Students can drive change in the world's fastest moving industry with a degree in engineering. At La Trobe University students gain skills to adapt to new fields and advanced technology with industry expert teachers, collaborative workspaces and placements that put them in the job earlier.



HIGH EMPLOYABILITY

91.4% of our domestic engineering undergraduates found full-time employment within four months of graduation.*



WELL RESPECTED

We have a 30-year history of teaching electrical and electronics engineering.



TOP 300 GLOBALLY

We're ranked in the world's top 300 for computer science and engineering.+

Learn more





STUDY AT LA TROBE WEBINARS

FIND OUT EVERYTHING YOU NEED TO KNOW ABOUT STUDY AT LA TROBE WITH OUR RANGE OF ON-DEMAND COURSE SPECIFIC WEBINARS.

Support your students through Change of Preference with confidence using La Trobe's comprehensive on-demand webinar collection. Designed specifically to help students cut through the confusion and make well-informed course decisions.

Students will gain valuable insights into course structures, majors and minors, skills development, and career pathways—all presented by La Trobe academics. With flexible, on-demand access, students can explore their options at their own pace across multiple study areas:

- Sport & Exercise Science
- Business/Commerce
- Education
- Arts
- Health Sciences
- Psychological Sciences
- Cybersecurity
- Biomedical Science
- Nursing
- Law
- Food & Nutrition
- Engineering



Explore webinars



Alex Sims

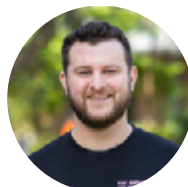
Director Domestic Student Recruitment

UNDERGRADUATE TEAM



Jemima Bowen

Melbourne Campus



James Alvarez

Melbourne Campus



Livio Sikora

Melbourne Campus



Gemma Silver

Melbourne Campus



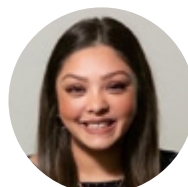
Zai Dashi Naw

Melbourne Campus



Justine Williams

Bendigo Campus



Kristy Kumar

Bendigo Campus



Carli Spence

Bendigo Campus



Trudy Wright

Bendigo Campus



Erika Salathiel

Bendigo Campus



Elicia Thomson

Shepparton Campus



Marcella Bulic

Albury-Wodonga Campus



**Jessica
Chalmers-Borella**

Albury-Wodonga Campus



Nadine Malycha

Mildura Campus

Connect with us

We're excited about the year ahead and supporting you and your students to find their dream course at La Trobe.

For support, please contact:
undergrad@latrobe.edu.au

Meet and connect with our team

Disclaimer: The information contained in this publication is indicative only. While every effort is made to provide full and accurate information at the time of publication, the University does not warrant the currency, accuracy or completeness of the contents. The University reserves the right to make changes without notice, at any time in its absolute discretion, including but not limited to varying admission or assessment requirements, or varying or discontinuing any course or subject. To the extent permitted by law, the University does not accept responsibility for any loss or damage occasioned by use of any of the information contained in this publication. For course information updates, please visit: latrobe.edu.au

La Trobe University is a registered provider under the Commonwealth Register of Institutions and Courses for Overseas Students (CRICOS). CRICOS Provider Code Number 00115M - TEQSA PRV12132; Provider Category: Australian University. Published by La Trobe University