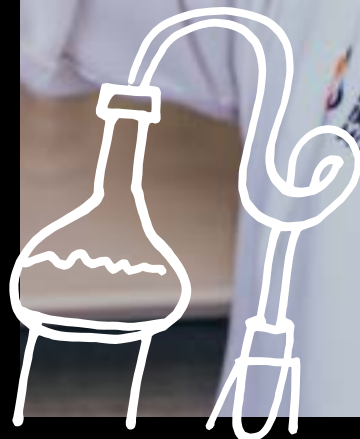
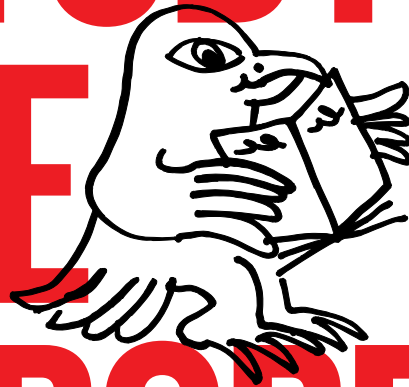


COURSE GUIDE

SCIENCE



WHY STUDY SCIENCE AT LA TROBE



HELP SOLVE SOME OF THE BIGGEST CHALLENGES FACING HUMANITY. TURN YOUR DESIRE FOR DISCOVERY INTO REAL IMPACT. WHETHER IT'S ADDRESSING ISSUES WITH GLOBAL FOOD INSECURITY, PROTECTING THE WORLD'S BIODIVERSITY, UNDERSTANDING AND PREVENTING DISEASE, LEADING SOCIAL CHANGE AND EQUITY, OR PARTNERING WITH PIONEERING INDUSTRIES, LA TROBE IS MAKING A REAL DIFFERENCE IN SCIENCE, HERE AND NOW.





Build your future in science

As a La Trobe science student, you'll spend more time doing than just listening, with hands-on fieldwork, lab work, projects and placements from year one. With courses spanning a wide range of scientific disciplines, you can specialise in what you're passionate about and build practical skills that make a real-world impact.




The impact is real

As the home to two flagship institutes and six research centres, we're committed to driving new discoveries in science, health and technology. Some recent research highlights include the NanoMslide which is used to detect cancer cells, the Wine Industry Smoke Detectors (WISDs) that monitors smoke events around vineyards, and a smart irrigation system to automate water pump management and monitor sunlight, temperature and humidity levels without human interaction.

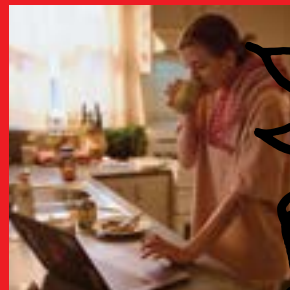
- ✳️ We're #1 in Australia for learning resources in veterinary science.¹
- ✳️ We've invested over \$500 million in our state-of-the-art facilities to give students immersive experiences and to support researchers right here on campus.
- ✳️ We're the only university in Australia with a dedicated wildlife sanctuary.
- ✳️ Our microbiology laboratories offer a creative environment that enhances learning with sequencing capabilities, sophisticated fermentation equipment and anaerobic facilities.
- ✳️ We're ranked in the world's top 200 for life sciences.²
- ✳️ Five purpose-built anatomy laboratories allow students to study donor bodies, plastinated specimens, skeletons, models, imaging, and augmented and virtual reality.
- ✳️ Our glasshouses are controlled environments and growing-on areas for cultivating plants used in ecological experiments and applied species conservation research.
- ✳️ At the La Trobe Animal Research and Teaching Facility (LARTF), expert technicians and veterinarians train students in animal handling and technical procedures.
- ✳️ The Australian Centre for Artificial Intelligence in Medical Innovation (ACAMI) is the world's first university innovation centre specialising in the application of AI to accelerate the discovery and development of immunotherapies, vaccines and medical innovation.

1. Quality Indicators for Learning and Teaching (QILT), 2025, *Veterinary Science (Undergraduate)*
2. Times Higher Education (THE), 2026, *Life Sciences University Rankings 2026*

STUDY HOW AND WHERE YOU WANT



CHOOSE HOW AND WHERE YOU WANT TO STUDY – ON YOUR COUCH, IN A CLASSROOM, OR A MIX OF BOTH. MANY OF OUR COURSES GIVE YOU THE FLEXIBILITY TO LEARN IN A WAY THAT SUITS YOU, WITH OPTIONS FOR ONLINE STUDY,¹ ON-CAMPUS CLASSES, OR A COMBINATION THROUGH LA TROBE'S UNIQUE STUDYFLEX™ MODEL.



¹. Please see our website for more details on which courses offer online study options.



Melbourne (Bundoora) Campus

At our main campus, you'll be surrounded by bushland while still just a tram ride from the Melbourne city. With almost every science course and subject on offer, you can pursue what you're passionate about in outstanding facilities, with plenty of opportunities for student events, clubs and activities.



Bendigo Campus

Dive into the scientific area you're the most passionate about with a Bachelor of Science (Mathematics, Molecular biology, Pharmaceutical science, Physics or Psychological science), Bachelor of Biomedical Science, Bachelor of Biomedical Science (Medical), Bachelor of Pharmacy (Honours) or Bachelor of Psychological Science. With opportunities for hands-on experience via our labs and placements with our industry partners, you'll build the right mix of practical skills and theoretical expertise.



Find your people

University is more than a place to study – it's also a hub of social activity. Did you know there are student clubs for the science cohort? Check out the AgriBio Student Society (ABSS), Animal, Veterinary & Zoological Society (AVZS), Botany and Plant Ecology Society (BotSoc), Robotics Club, Bendigo Association of Pharmacy Students (BAPS), La Trobe Association of Biomedical Students (LABS) and more.

Albury-Wodonga Campus


Be part of a welcoming campus community where you learn in modern, world-class facilities and get hands-on local placement experiences. Kickstart your science journey with a Diploma in agricultural science, biological sciences or rural health, or study a Bachelor's degree in biomedical science, biomedical science (medical) or psychological science.



Online

There's no campus closer than your own home. When you study a double degree, you might have online study options.

THE FUTURE OF WORK STARTS HERE



NOW MORE THAN EVER, SCIENTISTS ARE THE VOICE OF REASON WE NEED. LEARN FROM EXPERIENCED ACADEMICS IN IMMERSIVE LEARNING SPACES, HIGH-TECH LABS AND IN THE FIELD. OUR COMMITMENT TO EXCELLENCE AND INNOVATION MEANS WE'RE ADDRESSING SOME OF THE MAJOR GLOBAL CHALLENGES OF OUR TIME SO YOU GRADUATE READY TO HELP SOLVE PROBLEMS FACING HUMANITY.



Career ready advantage

Sector-leading employability programs and projects to develop skills employers want.



Industry placements

Compulsory and elective professional placements that tests your knowledge in a real-world environment.



Powered NVIDIA

We're the first uni in Australia to deploy a NVIDIA DGX H200, pushing the boundaries of AI-driven research.



Learning with industry

Mentoring, networking, specialist career consultations, workshops, leadership programs and more.



OpenAI for all

We're the first university in Victoria to sign a deal with OpenAI, ensuring all students will have access to ChatGPT Edu in 2027.



Transformative research

Our research focuses on some of today's biggest challenges in health, disease and the environment. We're making new discoveries in cardiometabolic disease, developmental biology, host-pathogen interactions, microbial ecology, musculoskeletal function, neurodegenerative diseases and pain management.

With over 120 research groups, many of which are members of our research institutes, La Trobe Institute for Molecular Science (LIMS) and La Trobe Institute for Sustainable Agriculture and Food (LISAF), we're using new technologies in biosensors, synthetic biology, digital biology and space biology to find solutions to health challenges.





FEATURE COURSE

BACHELOR OF SCIENCE

OVERVIEW Develop foundational science skills and the freedom to delve into your passions.

Whether it's protecting endangered animals, developing new ways to treat disease or fighting climate change, you'll be ready to pursue your dream journey in science by tailoring your degree with a mix of majors and minors.

As you learn from leading academics and researchers, you'll take a deep dive into science – not only scientific concepts, but also how scientists think, work and share their findings.

PREREQUISITES Units 3 & 4: a study score of at least 25 in English (EAL) or at least 20 in English other than EAL. Units 3 & 4: a study score of at least 20 in any Mathematics.

INTAKE Semester 1 & 2 | Semester 1

DURATION 3 years

MAJORS **MELBOURNE:** Applied cybersecurity, Artificial intelligence, Biochemistry, Botany, Chemistry, Crop science, Data science, Ecology, Genetics, Human physiological sciences, Mathematics, Microbiology, Physics, Psychological science, Statistics, Zoology

BENDIGO: Mathematics, Molecular biology, Pharmaceutical science, Physics, Psychological science

CAREER PATHS

- Security or AI architect
- Biological analyst
- Plant biotechnologist
- Environmental scientist
- Molecular scientist

ATAR 60.85 57.05

ASPIRE ATAR 55.00 50.00

Major in your passion

Depending on your degree, you have a wide range of science majors to choose from. Turn what you're passionate about into academic curiosity and set yourself up for a future career that makes an impact.

Agribusiness

Artificial intelligence

Cancer, heart and brain diseases

Data science

Human physiological sciences

Microbiology

Physiology and pharmacology

Software engineering

Animal science

Biochemistry

Chemistry

Ecology

Immunology and infectious disease

Molecular and cellular biochemistry

Plant and soil science

Statistics

Applied cybersecurity

Botany

Crop science

Genetics

Mathematics

Physics

Psychological science

Zoology



BACHELOR OF AGRICULTURE [©] ¹

OVERVIEW	Prepare for a successful career tackling the big issues in farming, food production and farming systems. Build foundational skills in plant and animal sciences, agricultural systems, agribusiness, land and soil management, and sustainable agricultural practice. Explore the leading business practices, technologies and innovations transforming farming to meet the food security challenges of the 21st century while reducing their environmental impacts. Choose from majors in agribusiness, animal science, or plant and soil science. Integrate theory with practice via work-based learning with agriculture industry leaders.
PREREQUISITES	Units 3 and 4: a study score of at least 25 in English (EAL) or at least 20 in English other than EAL. Units 3 and 4: a study score of at least 20 in any Mathematics.
INTAKE	Semester 1
DURATION	3 years
MAJORS	Agribusiness, Animal science, Plant and soil science
CAREER PATHS	<ul style="list-style-type: none"> – Agronomist – Animal health or welfare officer – Soil scientist – Government policy advisor – Biosecurity officer

	^{MEL}
ATAR	60.80
ASPIRE ATAR	50.00

BACHELOR OF ANIMAL AND VETERINARY BIOSCIENCES [©] ¹

OVERVIEW	Study the basics of animal science, including breeding, nutrition and animal welfare. You'll also delve into global issues such as food security, epidemics and pandemics, and the environmental impacts of animal agriculture. In later years you'll explore animal physiology, biochemistry and immunology. Each year of your degree will include practical elements, such as real-life animal case studies which give you the chance to work closely with our industry partners. Placements – both compulsory and elective – allow you to take your learning out of the classroom and into the real world.
PREREQUISITES	Units 3 & 4: a study score of at least 25 in English (EAL) or at least 20 in English other than EAL.
INTAKE	Semester 1
DURATION	3 years
CAREER PATHS	<ul style="list-style-type: none"> – Conservation scientist – Microbiologist – Animal health officer – Animal biosecurity officer

	^{MEL}
ATAR	60.25
ASPIRE ATAR	50.00

BACHELOR OF BIOLOGICAL SCIENCES [©] ¹

OVERVIEW	Start practical classes from your first year – both in our on-campus labs and facilities, and out in the field. Get a glimpse into your professional future in science with industry-led workshops and seminars, as well as opportunities for work placements. Customise your course with a major of your choice. This degree also gives you the option to take a double major or choose an additional minor.
PREREQUISITES	Units 3 and 4: a study score of at least 25 in English (EAL) or at least 20 in English other than EAL.
INTAKE	Semester 1 & 2
DURATION	3 years
MAJORS	Biochemistry, Botany, Ecology, Genetics, Human physiological sciences, Microbiology, Zoology
CAREER PATHS	<ul style="list-style-type: none"> – Biological scientist – Microbiologist – Environmental consultant – Biosecurity officer – Geneticist

	^{MEL}
ATAR	55.55
ASPIRE ATAR	50.00

BACHELOR OF BIOMEDICAL SCIENCE ^F [©] ¹

OVERVIEW	Combining the fields of biology and medical science, you'll open doors to careers across high-demand sectors including education, healthcare, media and research. Explore advanced topics in biomedical sciences that underpin your knowledge across chemistry, metabolic biochemistry, pharmacology and the growing need for expertise in immunology. Then deepen your expertise across topics including applied immunology, cancer research, response to infectious disease, and cardiovascular and neurological systems.
PREREQUISITES	Units 3 and 4: a study score of at least 25 in English (EAL) or at least 20 in English other than EAL.
INTAKE	Semester 1 & 2
DURATION	3 years
CAREER PATHS	<ul style="list-style-type: none"> – Biomedical, biotechnology and pharmaceutical industries – Medical sales – Education – Media and communications – Hospital and government departments

	^{BEN}	^{A-W}
ATAR	60.55	64.45
ASPIRE ATAR	50.00	50.00

BACHELOR OF BIOMEDICAL SCIENCE (MEDICAL) ^F [©]

OVERVIEW	Gain a pathway into the graduate entry Doctor of Medicine Rural Pathway offered by the University of Melbourne in Shepparton for regional and rural students intending to practice medicine in a regional or rural location. In this pre-medicine course, you'll combine the fields of biology, pharmacology and medicine. You will learn about the human body, its structure and its functions. This includes understanding how disease manifests and how drug strategies are used to treat disease. You'll learn practical skills needed to explore the underlying molecular basis of acute and chronic illnesses.
PREREQUISITES	Units 3 and 4: a study score of at least 30 in English (EAL) or at least 25 in English other than EAL.
INTAKE	Semester 1
DURATION	3 years
CAREER PATHS	Students completing the Bachelor of Biomedical Science (Medical) will have a guaranteed* place in the University of Melbourne's Doctor of Medicine (Rural Pathway).

	^{BEN}	^{A-W}
ATAR	NP	NP
ASPIRE ATAR	80.00	80.00

EXTRA ENTRY REQUIREMENTS
 The Bachelor of Biomedical Science (Medical) is subject to extra entry requirements in addition to meeting minimum ATAR or Aspire ATAR requirements, including multiple mini-interviews & evidence of rural status. See the 'Entry requirements & pathways' tab on the course page on our website for details.
 * The University of Melbourne guarantees students who graduate from the Bachelor of Biomedical Science (Medical) with a 70 weighted average mark (WAM) a place in the Doctor of Medicine (Rural Pathway) in Shepparton.
 Aspire ATAR conditional offer guarantees an interview only.

PLEASE SEE WEBSITE FOR DETAILS

^F First Nations Australian entry | [©] Aspire Community Impact | ^E Aspire Everyday Impact | ¹ Aspire Academic Impact | **NA** ATAR not applicable | **NP** ATAR not published | ^R Regional Benefits Program | **RE** Regional entry

BACHELOR OF BIOMEDICINE [Ⓢ] ^①

OVERVIEW	Get the technical and applied expertise you need to establish your biomedical career with our Bachelor of Biomedicine. Start with how the body works as you build fundamental knowledge in chemistry, bioscience and health. Take a close look at infectious diseases, including the factors that drive epidemics and pandemics. Then choose a combination of up to two majors or electives aligned to your personal career goals and industry demand. You'll graduate with your majors on your academic transcript and, depending on your choice of majors, a pathway to specialist postgraduate studies in research, medicine, physiotherapy and more.
PREREQUISITES	Units 3 and 4: a study score of at least 25 in English (EAL) or at least 20 in English other than EAL.
INTAKE	Semester 1
DURATION	3 years
MAJORS	Cancer, heart and brain diseases, Immunology and infectious disease, Molecular and cellular biochemistry, Physiology and pharmacology
CAREER PATHS	<ul style="list-style-type: none"> – Biomedical researcher – Biotechnologist – Biochemist – Microbiologist – Clinical research associate

^{MEL}

ATAR	60.00
ASPIRE ATAR	50.00

BACHELOR OF PHARMACY (HONOURS) ^F [Ⓢ]

OVERVIEW	Take the first steps on your path to playing a vital role in your community and a successful career as a pharmacist. Develop the practical, technical and human skills needed to provide medicines to the public. Understand how systems of the body work and how diseases and medicines affect these systems. Access our on-campus training pharmacy and get work-ready by participating in a range of community and hospital placements. Graduate eligible to complete a one-year internship and take the Pharmacy Board of Australia exams to qualify as a professional pharmacist.
PREREQUISITES	Units 3 and 4: a study score of at least 30 in English (EAL) or at least 25 in English other than EAL.
INTAKE	Semester 1
DURATION	4 years
CAREER PATHS	<ul style="list-style-type: none"> – Community pharmacist – Hospital pharmacist – GP clinics – In-home medicine reviews – Aged care facilities

^{BEN}

ATAR	75.05
ASPIRE ATAR	60.00

BACHELOR OF PSYCHOLOGICAL SCIENCE ^F [Ⓢ] ^①

OVERVIEW	Prepare for a career as a professional psychologist, or in a psychology-related field across industries from clinical psychology to human services and marketing. You'll develop strong analytical, research and communication skills by studying foundational subjects that include clinical and health psychology, developmental and social psychology, psychological assessment, intervention and research. Explore elective subjects with a choice of minor sequences in human relationships and neuroscience.
PREREQUISITES	Units 3 and 4: a study score of at least 25 in English (EAL) or at least 20 in English other than EAL.
INTAKE	Semester 1 & 2
DURATION	3 years
CAREER PATHS	<ul style="list-style-type: none"> – Clinical psychologist* – Public health worker – Rehabilitation worker – Youth worker

^{MEL} ^{BEN} ^{A-W} ^{ONL}

ATAR	55.55	59.90	64.30	NP
ASPIRE ATAR	50.00	50.00	50.00	50.00

* Requires completion of further psychology education.

BACHELOR OF VETERINARY NURSING AND TECHNOLOGY [Ⓢ]

OVERVIEW	The Bachelor of Veterinary Nursing and Technology is the first para-professional veterinary nursing qualification of this level available in Australia. It is designed to produce highly skilled clinicians with exceptional levels of practical skill, knowledge and in-depth understanding gained through a stimulating exploration of the academic underpinnings of the field. Throughout the course, you'll undertake work based learning (WBL) placements in various industry settings including hospitals, animal shelters and farms. You'll have the opportunity to apply the theory and practices learned on campus in a range of areas of interest.
PREREQUISITES	Units 3 and 4: a study score of at least 25 in English (EAL) or at least 20 in English other than EAL. Units 3 and 4: a study score of at least 20 in one of Biology, Chemistry or any Mathematics.
INTAKE	Semester 1
DURATION	3 years
CAREER PATHS	<ul style="list-style-type: none"> – Veterinary clinics or hospitals – Veterinary pharmaceutical or nutrition – Veterinary technology

^{EPP}

ATAR	NP
ASPIRE ATAR	50.00

^{EPP} Epping campus. See website for details.

Applicants are required to submit a personal statement to be eligible for selection. See website for more details.

BACHELOR OF WILDLIFE AND CONSERVATION BIOLOGY [Ⓢ]

OVERVIEW	La Trobe's Bachelor of Wildlife and Conservation Biology draws on many areas of science including botany, genetics and zoology. You'll learn to apply ecological concepts to the conservation of species and ecosystems and explore the legal framework for conservation. Advance your understanding of conservation issues, learn to use different technologies to collect and process data, and design your own detailed conservation management plan. In addition to your core biology, conservation and quantitative skills subjects, you can choose from a range of electives and tailor your study experience to suit your career aspirations.
PREREQUISITES	Units 3 and 4: a study score of at least 25 in English (EAL) or at least 20 in English other than EAL.
INTAKE	Semester 1
DURATION	3 years
CAREER PATHS	<ul style="list-style-type: none"> – Conservation scientist – Park ranger – Environmental consultant – Wildlife research biologist – Wildlife officer

^{MEL}

ATAR	71.20
ASPIRE ATAR	60.00

PLEASE SEE WEBSITE FOR DETAILS

^F First Nations Australian entry | [Ⓢ] Aspire Community Impact | [Ⓢ] Aspire Everyday Impact | ^① Aspire Academic Impact | **NA** ATAR not applicable | **NP** ATAR not published | ^R Regional Benefits Program | **RE** Regional entry



BACHELOR OF ARTS/BACHELOR OF SCIENCE © ⓘ

MEL

OVERVIEW	An arts/science degree from La Trobe builds your knowledge and skills across creative and technical areas, expanding your career prospects in fields such as environmental science, humanities, research, health and social sciences. You'll learn in purpose-built teaching and research facilities from some of Australia's leading educators and gain a balance of theoretical knowledge and practical experience.
PREREQUISITES	Units 3 and 4: a study score of at least 25 in English (EAL) or at least 20 in English other than EAL. Units 3 and 4: a study score of at least 20 in any Mathematics.
INTAKE	Semester 1 & 2
DURATION	4 years
MAJORS	Aboriginal studies, Anthropology, Applied cybersecurity, Archaeological and heritage studies, Artificial intelligence, Asian studies, Biochemistry, Botany, Chemistry, Chinese studies, Classics and ancient history, Creative and professional writing, Crime, justice and legal studies, Crop science, Data science, Digital media, Ecology, English, Environmental humanities, Ethics and social justice, French studies, Gender, sexuality and diversity studies, Genetics, Greek studies, Hindi studies, History, Human physiological sciences, International studies, Italian studies, Japanese studies, Linguistics, Mathematics, Microbiology, Philosophy, Physics, Politics, Psychological science, Sociology, Spanish studies, Statistics, Sustainability and development, Visual cultures, Zoology
CAREER PATHS	<ul style="list-style-type: none"> - Diplomat - Ecologist - Medical researcher - Conservation officer - Policy advisor

ATAR	68.80
ASPIRE ATAR	55.00

BACHELOR OF BUSINESS/BACHELOR OF PSYCHOLOGICAL SCIENCE © ⓘ

ONL

OVERVIEW	Build valuable business and commerce skills and develop an in-depth knowledge of human behaviour. Through your business studies, you'll prepare to become an agile and innovative business leader. Build expertise for the digital age, including in data analysis, market research and business planning. As you study psychology, you'll develop the skills to evaluate people's psychological states, support them to cope with disorders and understand how environmental factors shape our psychology.
PREREQUISITES	Units 3 and 4: a study score of at least 25 in English (EAL) or at least 20 in English other than EAL.
INTAKE	Semester 1
DURATION	4 years
MAJORS	Agribusiness, Digital business, Management, Marketing
CAREER PATHS	<ul style="list-style-type: none"> - Organisational development specialist - Psychologist* - Economic analyst - Management consultant - Market researcher

ATAR	62.15
ASPIRE ATAR	50.00

* Requires completion of further psychology education.

BACHELOR OF COMMERCE/BACHELOR OF BIOMEDICINE ©

MEL

OVERVIEW	Learn how to navigate rapidly evolving environments in biotechnology, health, commercial practice and public policy. Co-designed with industry leaders, our double degree gives you a multidisciplinary set of skills and knowledge sought-after by employers and policymakers. Build fundamental knowledge in chemistry, bioscience and health, while gaining the skills to solve complex problems by merging technical know-how and strategic analysis with an in-depth knowledge of innovations in the medical field. Gain real-world experience through industry placements, work-integrated learning projects and overseas student exchange opportunities.
PREREQUISITES	Units 3 and 4: a study score of at least 25 in English (EAL) or at least 20 in English other than EAL.
INTAKE	Semester 1 & 2
DURATION	4.5 years
MAJORS	Accounting, Business analytics, Cancer, heart and brain diseases, Economics, Finance, Immunology and infectious disease, Management, Marketing, Molecular and cellular biochemistry, Physiology and pharmacology
CAREER PATHS	<ul style="list-style-type: none"> - Biomedical researcher - Biotechnologist - Accountant - Financial advisor - Project manager

ATAR	84.75
ASPIRE ATAR	65.00

BACHELOR OF COMMERCE/BACHELOR OF PSYCHOLOGICAL SCIENCE ©

MEL

OVERVIEW	Develop valuable skills in business and health while remaining grounded in an entrepreneurial core. Analyse the complex challenges confronting business and society, as well as emerging developments in the field of health sciences. Develop cultural intelligence, leadership skills, stakeholder negotiation and communication skills that help you to thrive in any work environment. Choose from a range of majors and minors to build a unique set of multidisciplinary skills. Gain real-world experience by learning from industry experts, industry placements, work-integrated learning projects and overseas exchange opportunities.
PREREQUISITES	Units 3 and 4: a study score of at least 25 in English (EAL) or at least 20 in English other than EAL.
INTAKE	Semester 1 & 2
DURATION	4 years
MAJORS	Accounting, Business analytics, Economics, Finance, Management, Marketing
CAREER PATHS	<ul style="list-style-type: none"> - Psychologist* - Public health worker - Management consultant - Market researcher - Policy advisor

ATAR	80.90
ASPIRE ATAR	65.00

* Requires completion of further psychology education.

PLEASE SEE WEBSITE FOR DETAILS

ⓘ First Nations Australian entry | ⓘ Aspire Community Impact | ⓘ Aspire Everyday Impact | ⓘ Aspire Academic Impact | NA ATAR not applicable | NP ATAR not published | ⓘ Regional Benefits Program | RE Regional entry

BACHELOR OF COMMERCE/BACHELOR OF SCIENCE [©]

OVERVIEW	Explore how the world of science interacts with the commercial sphere and how to build business structures that power scientific innovation. Develop critical capabilities in independent research, innovative thinking, cultural intelligence, oral and written communication, teamwork and leadership. Gain a multidisciplinary set of skills and knowledge sought after by employers and policymakers – from learning how to successfully manage research and development projects to commercialising intellectual property from a scientific breakthrough. Choose from majors in both commerce and science, as well as open access majors from across the University.
PREREQUISITES	Units 3 and 4: a study score of at least 25 in English (EAL) or at least 20 in English other than EAL. Units 3 and 4: a study score of at least 20 in any Mathematics.
INTAKE	Semester 1 & 2
DURATION	4 years
MAJORS	Accounting, Applied cybersecurity, Artificial intelligence, Biochemistry, Botany, Business analytics, Chemistry, Crop science, Data science, Ecology, Economics, Finance, Genetics, Human physiological sciences, Management, Marketing, Mathematics, Microbiology, Physics, Psychological science, Statistics, Zoology
CAREER PATHS	<ul style="list-style-type: none"> – Business analyst – Chemist – Data scientist – Economist – Geneticist

MEL

ATAR	83.35
ASPIRE ATAR	65.00

BACHELOR OF CRIMINOLOGY/BACHELOR OF PSYCHOLOGICAL SCIENCE [©] ^①

OVERVIEW	Explore the connections between crime and the human mind and its effects on behaviour. Understand crime in its social context and how individual and social responses are shaped by gender, race, power and money. Establish a grounding in psychology, exploring theories on individuals, groups and whole societies. Learn how experiences and incentives impact behaviour and how this knowledge can be applied to key issues in criminal justice. Graduate ready to apply for membership of the Australian Psychological Society and the prerequisites to apply for Honours in psychology, with potential to pursue postgraduate study and registration as a psychologist.
PREREQUISITES	Units 3 and 4: a study score of at least 25 in English (EAL) or at least 20 in English other than EAL.
INTAKE	MEL ONL Semester 1 & 2 BEN Semester 1
DURATION	4 years
CAREER PATHS	<ul style="list-style-type: none"> – Criminologist – Corrections officer – Intelligence officer – Forensic psychologist* – Victim advocate

MEL BEN ONL

ATAR	55.80	55.45	55.40
ASPIRE ATAR	50.00	50.00	50.00

* Requires completion of further psychology education.

BACHELOR OF CYBERSECURITY/BACHELOR OF PSYCHOLOGICAL SCIENCE [©]

OVERVIEW	Build a career at the nexus of two rapidly evolving sciences and learn how to combat the constantly evolving threat of cybercrime. In this distinctive combination of study areas, you can build a career within the growing field of cybersecurity or pursue a career as a psychologist (after further postgraduate study). Explore the research methods used in contemporary psychological investigations, and understand human behaviour and explore the psychology of hackers, victims and defenders. Learn from experts in world-class facilities, including our Cyber Security Research Hub – one of the largest cybersecurity research hubs in Victoria.
PREREQUISITES	Units 3 and 4: a study score of at least 25 in English (EAL) or at least 20 in English other than EAL.
INTAKE	Semester 1
DURATION	4 years
CAREER PATHS	<ul style="list-style-type: none"> – Ethical hacker – Psychologist* – Security architect – Cybersecurity policy advisor – Management consultant

MEL

ATAR	NP
ASPIRE ATAR	50.00

* Requires completion of further psychology education.

BACHELOR OF LAWS (HONOURS)/BACHELOR OF BIOMEDICINE [©]

OVERVIEW	Get the skills, knowledge and industry experience you need to launch a legal career in the world of scientific advancement. In this double degree, you'll develop a solid legal grounding in the fundamentals of legal practice, and hone your skillset in advocacy, negotiation and dispute resolution through intellectual and skills-based training. At the same time, you'll explore how the body works as you build essential knowledge in chemistry, bioscience and health.
PREREQUISITES	Units 3 and 4: a study score of at least 30 in English (EAL) or at least 25 in English other than EAL.
INTAKE	Semester 1
DURATION	5.5 years
MAJORS	Cancer, heart and brain diseases, Immunology and infectious disease, Molecular and cellular biochemistry, Physiology and pharmacology
CAREER PATHS	<ul style="list-style-type: none"> – Health or medical lawyer – Compliance manager – Intellectual property lawyer – Research and development manager – Public health policymaker

MEL

ATAR	92.45
ASPIRE ATAR	78.00

PLEASE SEE WEBSITE FOR DETAILS

First Nations Australian entry | © Aspire Community Impact | © Aspire Everyday Impact | ① Aspire Academic Impact | NA ATAR not applicable | NP ATAR not published | Regional Benefits Program | RE Regional entry



BACHELOR OF LAWS (HONOURS)/BACHELOR OF PSYCHOLOGICAL SCIENCE ©

MEL BEN

OVERVIEW	Build an adaptable skillset that combines skills-based legal training with expertise in psychological science. We combine outstanding legal training with a progressive approach that prepares you for employment. You'll build legal expertise in key areas of law and develop skills that are highly valued by all employers, like advocacy, negotiation, and dispute resolution. In your accredited psychological science degree, you'll enjoy the full benefits of having access to academics who are experts in their fields. Explore the environmental factors that affect our mental health and understand how community members cope with mental and physical disorders.
PREREQUISITES	Units 3 and 4: a study score of at least 30 in English (EAL) or at least 25 in English other than EAL.
INTAKE	MEL Semester 1 & 2 BEN Semester 1
DURATION	5 years
CAREER PATHS	<ul style="list-style-type: none"> - Forensic psychologist* - Mediator - Barrister or solicitor - Workplace relations advisor - Policy advisor

ATAR	91.00	NP
ASPIRE ATAR	78.00	70.00

* Requires completion of further psychology education.

BACHELOR OF LAWS (HONOURS)/BACHELOR OF SCIENCE ©

MEL

OVERVIEW	Gain a powerful combination of legal skills and cutting-edge scientific knowledge. From stem cell research to how personal information is collected, stored and shared, advances in science and technology have real human impacts. This double degree uniquely prepares you to address contemporary challenges from a scientific, legal and ethical perspective. Benefit from our progressive approach to legal education with a law degree and graduate ready to start your career as an expert legal practitioner with an advanced understanding of scientific concepts, or as a science professional with a solid understanding of regulatory environments.
PREREQUISITES	Units 3 and 4: a study score of at least 30 in English (EAL) or at least 25 in English other than EAL. Units 3 and 4: a study score of at least 20 in any Mathematics.
INTAKE	Semester 1 & 2
DURATION	5 years
MAJORS	Applied cybersecurity, Artificial intelligence, Biochemistry, Botany, Chemistry, Crop science, Data science, Ecology, Genetics, Human physiological sciences, Mathematics, Microbiology, Physics, Psychological science, Statistics, Zoology
CAREER PATHS	<ul style="list-style-type: none"> - Research and development manager - Intellectual property lawyer - Compliance manager - Barrister or solicitor - In-house counsel

ATAR	NP
ASPIRE ATAR	78.00

BACHELOR OF NURSING/BACHELOR OF PSYCHOLOGICAL SCIENCE ©

MEL BEN A-W

OVERVIEW	Get the clinical understanding and confidence to care for people of all ages while building valuable expertise in psychological science. Learn from leading clinicians and academics and gain hands-on experience in our state-of-the-art simulation labs. Move into real-world healthcare environments with La Trobe's top-tier industry partners in your first year. Develop valuable expertise in cognitive, developmental, social, abnormal, clinical and health psychology. Graduate ready to apply to become a registered nurse (RN) and take your first steps to becoming a registered psychologist.
PREREQUISITES	Units 3 and 4: a study score of at least 30 in English (EAL) or at least 25 in English other than EAL.
INTAKE	Semester 1
DURATION	4 years
CAREER PATHS	As a registered nurse (RN), you can pursue career opportunities in a range of settings, including: <ul style="list-style-type: none"> - Clinics and hospitals - Homes and hospices - Schools and universities - Community health centres - Government agencies

ATAR	70.45	NP	NP
ASPIRE ATAR	55.00	55.00	55.00

DIPLOMA OF AGRICULTURAL SCIENCE

A-W

OVERVIEW	Build foundational skills in agriculture, across plant and animal sciences, agricultural systems, agribusiness, land and soil management, and sustainable agricultural practices. Develop a strong understanding of agricultural principles, practices and technologies. Get practical and hands-on experiences via laboratories in chemistry, biology and genetics. Develop solutions to real-world agricultural problems using scientific and economic concepts. Graduate with a pathway to further study, with this course acting as a direct pathway into the second year of the Bachelor of Agriculture.
PREREQUISITES	Units 3 and 4: a study score of at least 25 in English (EAL) or at least 20 in English other than EAL.
INTAKE	Semester 1
DURATION	1 year
CAREER PATHS	<ul style="list-style-type: none"> - Farm manager - Broadacre farm operator - Stock manager - Agribusiness owner or manager

ATAR	NA
-------------	----

PLEASE SEE WEBSITE FOR DETAILS

First Nations Australian entry | © Aspire Community Impact | © Aspire Everyday Impact | © Aspire Academic Impact | NA ATAR not applicable | NP ATAR not published | Regional Benefits Program | RE Regional entry

DIPLOMA OF BIOLOGICAL SCIENCES Ⓜ Ⓜ

OVERVIEW	Explore the essential elements of life sciences on a supported pathway to a range of La Trobe's Bachelor's degrees in biological sciences, agriculture or animal and veterinary biosciences. Examine how molecules are organised into cellular structures and how infectious diseases are transmitted. Learn how cellular structures have evolved and how they're used for energy, growth, movement, regulation and defence. Build the skills to write and speak about basic scientific ideas to a wide range of audiences. Get the full university experience by studying core subjects alongside Bachelor's degree students.
PREREQUISITES	Units 3 and 4: a study score of at least 25 in English (EAL) or at least 20 in English other than EAL.
INTAKE	Semester 1 & 2
DURATION	1 year
CAREER PATHS	After further study in biological sciences, your future career could include: <ul style="list-style-type: none"> – Biological analyst – Biosecurity officer – Ecologist – Environmental consultant – Zoologist

	Ⓜ	Ⓜ
ATAR	NA	NA

DIPLOMA OF SCIENCE Ⓜ Ⓜ

OVERVIEW	Our Diploma of Science is a supported pathway into the Bachelor of Science, or the qualification you need for entry-level roles in the science industry. You'll explore basic scientific concepts, learn how to harness collaboration in the laboratory, build skills in scientific communication and put knowledge into practice through laboratory-based classes. Our wide range of electives allow you to specialise right away. Choose from biochemistry, zoology, physics, molecular biology, data science and more.
PREREQUISITES	Units 3 and 4: a study score of at least 25 in English (EAL) or at least 20 in English other than EAL. Units 3 and 4: a study score of at least 20 in any Mathematics.
INTAKE	Ⓜ Semester 1 & 2 Ⓜ Semester 1
DURATION	1 year
CAREER PATHS	After completing further study, you could pursue a range of science-related career paths, including: <ul style="list-style-type: none"> – Laboratory assistant – Science communicator – Laboratory technician

	Ⓜ	Ⓜ
ATAR	NA	NA

UNDERGRADUATE CERTIFICATE IN AGRICULTURE

OVERVIEW	Gain a foundational understanding of agriculture through the integrated lenses of science, ethics, climate resilience, and strategic agribusiness management. You'll gain insights from our world-class AgriBio research and development facilities, glasshouses, and ecological labs, learning from the same innovation that drives real-world agricultural progress – giving you the confidence to directly pathway to La Trobe's Bachelor of Agriculture, where you can continue to build your skills in agriculture.
PREREQUISITES	Completed Year 12 in the current or previous 2 years. Successful completion of Australian Senior Secondary Certificate of Education OR completion of an Australian Foundation Studies program.
INTAKE	Semester 1 & 2
DURATION	6 months
CAREER PATHS	This course acts as a direct pathway into the Bachelor of Agriculture.

	Ⓜ
ATAR	NA

UNDERGRADUATE CERTIFICATE IN PSYCHOLOGICAL SCIENCE

OVERVIEW	Gain the foundational knowledge in psychological science and the interdisciplinary skills to upskill, prepare you for future studies, or transition into a career within the field of psychological science. You'll explore foundational subjects that will introduce you to core areas of psychology, including brain and mind, people and culture. Make study work around employment and life commitments with part-time online learning, and the option to further your studies in the Bachelor of Psychological Science.
PREREQUISITES	Completed Year 12 in the current or previous 2 years. Successful completion of Australian Senior Secondary Certificate of Education OR completion of an Australian Foundation Studies program.
INTAKE	Semester 1 & 2
DURATION	1 year part-time
CAREER PATHS	This course acts as a direct pathway into the Bachelor of Psychological Science.

	Ⓜ
ATAR	NA



What I loved about La Trobe

The strong sense of community and the great placement opportunities. The chance to gain real-world experience and take part in overseas programs also really stood out to me, as these opportunities are not as easily available at other universities.

Chloe

Bachelor of Animal and Veterinary Bioscience

The best part of studying

I'm really looking forward to a short-term program I'll be doing in South Africa later this year!

The La Trobe website includes complete entry requirements, including extra requirements, information on subject adjustments and requirements for non-Year 12 students. The availability of displayed majors may differ depending on campus and semester intake. ATAR data within this publication is based on the lowest selection rank (ATAR plus any adjustment factors) and is correct as of VTAC's January 2026 offer round. For more information, see latrobe.edu.au/courses. Aspire ATARs published are based on entry for Semester 1, 2026 and subject to change. For more information on the Aspire Early Offer Program and how to access the Aspire ATAR, see latrobe.edu.au/aspire. Some courses have alternative application options for regional and First Nations students – these courses are noted. For more information on how to apply, see the VTAC website.

PLEASE SEE WEBSITE FOR DETAILS

Ⓜ First Nations Australian entry | Ⓜ Aspire Community Impact | Ⓜ Aspire Everyday Impact | Ⓜ Aspire Academic Impact | **NA** ATAR not applicable | **NP** ATAR not published | Ⓜ Regional Benefits Program | **RE** Regional entry



SECURE YOUR SPOT ACROSS TWO COURSES

AT LA TROBE, WE'VE BUNDLED SOME OF OUR MOST POPULAR COURSES INTO PACKAGED OFFERS. ONCE YOU'VE RECEIVED AN OFFER INTO YOUR PREFERRED PACKAGE, A PLACE IN YOUR DREAM DEGREE IS LOCKED IN.

Undergraduate packaged offers

Start with a Diploma or Associate degree, then transition into the second or third year of your Bachelor's course.

Diploma of Agricultural Science	> Bachelor of Agriculture
Diploma of Biological Sciences	> Bachelor of Agriculture > Bachelor of Animal and Veterinary Biosciences > Bachelor of Biological Sciences
Diploma of Science	> Bachelor of Science

Postgraduate packaged offers

Secure a pathway from a Bachelor's degree into postgraduate study, such as a Master's degree.

Bachelor of Science	> Master of Teaching (Secondary)
Bachelor of Biomedicine	> Master of Physiotherapy Practice > Master of Clinical Audiology
Bachelor of Biomedical Science	> Master of Physiotherapy Practice
Bachelor of Psychological Science	> Master of Clinical Audiology > Master of Counselling, Rehabilitation and Mental Health

Admission into the postgraduate component of the package offer is conditional on meeting the minimum selection and admission criteria for the postgraduate award. Admission into the Bachelor's component of the packaged offer is conditional on passing all Diploma subjects. See website for campus availability and full terms and conditions.

WAYS INTO YOUR DEGREE



Pathways

If you didn't get the ATAR you wanted, or you aren't ready to start a degree right away, a great option is to start a pathway course then transfer later, provided you meet the entry requirements.

Some of our pathway options¹ include:

- Studying a different Bachelor's degree with lower entry requirements then transferring.
- Studying a two-year Associate degree with lower entry requirements then transferring.
- Studying a one-year Diploma then using that credit to transfer into an eligible Bachelor's degree.
- Completing a Certificate or Diploma at TAFE or VET then transferring.
- Studying a Diploma or Certificate at La Trobe College and gaining second year entry into a Bachelor's degree without an ATAR.
- Studying a course package to secure a spot and gaining advanced standing into a Bachelor degree.

Entry programs and adjustments

Boost your application to La Trobe with programs and adjustments that can change your score or offer an alternative entry score.

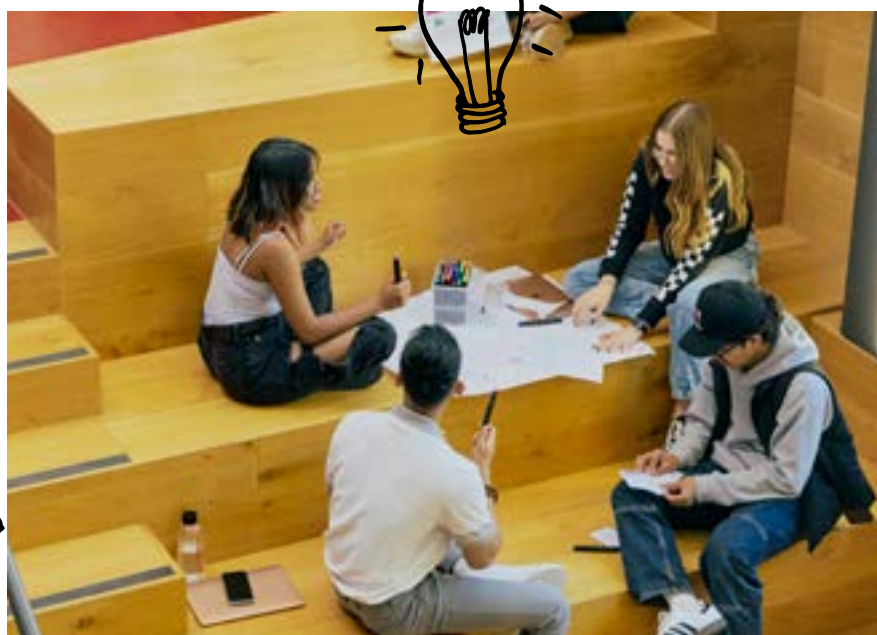
- Achieve Plus, higher education studies
- Aspire Early Offer Program
- Elite Athlete ATAR adjustment
- Regional Benefits Program
- VTAC Access and Equity Adjustment (SEAS)

Tertiary Preparation Program (TPP)

Not a Year 12 student or don't have an ATAR? Our TPP unlocks access to our courses while helping you build skills for success at university. The TPP is a free, online course that fits around your commitments.

Undergraduate certificates

Kick off your uni study with our new undergraduate certificates in areas like IT and health – no ATAR required.



1. Eligibility for transfer will depend on successful completion of certain subjects, consult a course advisor for more information on your options. Credit transfer subject to conditions.

ASPIRE EARLY OFFER PROGRAM



With Aspire, you'll have the opportunity to get an early conditional offer for a wide range of our courses² across our campuses before finishing Year 12. We have three streams to choose from, so if you've given back to your community, done well in Year 11, or have a strong drive to make a future impact, you could secure a spot in your dream course before finishing Year 12. Applications open 1 April 2026 and close 4 September 2026.

You'll also gain access to study support like ATARNotes+ as well as access to apply for exclusive scholarships and more.



*** Community Impact**
Aspire Community Impact rewards Year 12 students for their volunteering or community contribution with an Aspire ATAR.

*** Academic Impact**
Aspire Academic Impact enables Year 12 students to leverage their Year 11 results to secure an early conditional offer into a range of undergraduate courses – no ATAR required.

*** Everyday Impact**
Aspire Everyday Impact gives Year 12 students with the drive to make an impact a direct pathway into undergraduate studies – no ATAR required.



2. Some courses in the Aspire program are capped and remain competitive.

APPLYING TO STUDY AT LA TROBE



How to apply

Find your course: Browse by discipline at latrobe.edu.au/study or search by ATAR.

🔍 [La Trobe courses](#)

Use the ATAR calculator: If you're applying as a Year 12 student, use your real or estimated ATAR score to find courses that match your interest.

🔍 [La Trobe ATAR calculator](#)

Explore entry options: Use our ATAR adjustment calculator to estimate any boosts to your ATAR or explore entry and pathway options.

🔍 [Pathways & entry La Trobe](#)

Prepare to apply: Visit our Year 12 Hub to guide you through all the steps for making the right study choices.

🔍 [Choose La Trobe](#)

Your guide to preferences

Want to know how to submit your preferences? Prepare ahead with our guide to submitting your preferences.

🔍 [La Trobe VTAC applications](#)

Not in Year 12?

For most of our courses, you can apply directly to La Trobe online. For select undergraduate courses, or if you're applying for multiple courses, you'll apply via the Victorian Tertiary Admissions Centre (VTAC) or the Universities Admissions Centre (UAC).

Scholarships

We offer a range of scholarships that reward your academic, sporting or leadership achievements, or provide support to students experiencing financial difficulties, personal hardships or who come from underrepresented backgrounds.

The information on this page is meant for domestic students only. You are considered a domestic student if you are an Australian or New Zealand citizen, Australian permanent resident, or permanent humanitarian visa holder. Information on how to apply as an international student can be found online at latrobe.edu.au/study/apply/international. VTAC typically opens for applications in August of each year.



Our School is dedicated to making a positive difference in the lives of our students, partners and communities by cultivating healthy food, healthy people and healthy ecosystems.

We are committed to excellence and innovation in education and research, and addressing some of the major global challenges of our time including food security, chronic and infectious diseases, and environmental change. Aligned with the University's AI First Strategy, we look to embrace AI across all areas of our work.

Our research efforts focus on advancing knowledge and developing solutions to global challenges. We are uniquely positioned to make impactful research contributions due to our scale, research breadth and diversity, world-class infrastructure, strong industry partnerships and regional connectedness.

We look forward to working together to achieve our shared goals and make a positive impact on our world.

Professor Robyn Murphy

Dean, School of Agriculture,
Biomedicine and Environment

JOIN US AT OPEN DAY 2026

Explore your study options, chat with current students and teachers, tour our campuses, and discover what it's really like to study at La Trobe.

Melbourne (Bundoora)

Sunday 2 August

Shepparton

Sunday 9 August

Mildura

Wednesday 12 August

Albury-Wodonga

Sunday 16 August

Bendigo

Sunday 23 August

latrobe.edu.au/openday



TAKE THE NEXT STEP

Visit the Hub

choose.latrobe.edu.au

Live chat

latrobe.edu.au/chat

Call us

1300 135 045

Book a consult

consultation.latrobe.edu.au

Ask us a question

latrobe.edu.au/ask-us

STAY CONNECTED

Instagram

@latrobeuni

Facebook

La Trobe University

TikTok

@latrobeuni

X

@latrobe

LinkedIn

La Trobe University

latrobe.edu.au



Disclaimer: The information contained in this publication is indicative only. While every effort is made to provide full and accurate information at the time of publication, the University does not warrant the currency, accuracy or completeness of the contents. The University reserves the right to make changes without notice, at any time in its absolute discretion, including but not limited to varying admission or assessment requirements, or varying or discontinuing any course or subject. To the extent permitted by law, the University does not accept responsibility for any loss or damage occasioned by use of any of the information contained in this publication. For course information updates, please visit: latrobe.edu.au/courses

La Trobe University is a registered provider under the Commonwealth Register of Institutions and Courses for Overseas Students (CRICOS), La Trobe University CRICOS Provider Code Number 00115M. TEQSA PRV12132; Provider Category: Australian University.

Published by La Trobe University, May 2026 – DC42293.



ACKNOWLEDGEMENT OF COUNTRY

La Trobe University acknowledges our campuses are located on the lands of many Traditional Custodians in Victoria and New South Wales.

We recognise their ongoing connection to the land and value their unique contribution to the University and wider Australian society.

La Trobe University is committed to providing opportunities for Aboriginal and Torres Strait Islander people, both as individuals and communities, through teaching, learning, research and partnerships across all our campuses.

Wurundjeri

Melbourne (Bundoora & City)

Dja Dja Wurrung

Bendigo

Yorta Yorta

Shepparton

Dhudhuroa/Waywurru

Albury-Wodonga

Latji Latji

Mildura

Gadigal

Sydney