

LIVING AT LA TROBE

HOME AWAY FROM HOME

WELCOME TO LIVING AT LA TROBE

Living at La Trobe is more than just a place to live. You'll be joining an inclusive, enjoyable, and secure residential living experience, empowering our students to concentrate on their education journey and pursuit of career ambitions.

All our campuses have a variety of student accommodation options for you to choose from. They are carefully designed to provide you with a safe, comfortable, and welcoming environment to live.

You will also have access to an exciting Residential Life program of social activities and events where you can make friends and create lifelong memories.

Discover your perfect home away from home as you begin your academic journey with La Trobe University.



Scan code to learn more:
latrobe.edu.au/accommodation

CONTENTS



WHY CHOOSE LA TROBE UNIVERSITY?



**TOP 250
UNIVERSITIES
WORLDWIDE¹**



**#4 IN AUSTRALIA
FOR TECHNICAL
SKILLS²**



**#1 IN VICTORIA
BY EMPLOYERS³**



**#1 IN VICTORIA
FOR UNDERGRAD
EMPLOYABILITY⁴**



**#1 IN VICTORIA
FOR POST-GRAD
SALARIES⁵**



**TOP 200
WORLDWIDE IN
SUSTAINABILITY⁶**

WHY CHOOSE LIVING AT LA TROBE?



BETTER ACADEMIC PERFORMANCE

Living on campus will help you feel more engaged with your education and more positive generally. Residents have been proven to consistently outperform non-residents!



SAFE AND SECURE

We pride ourselves in keeping residents safe on, and around, our campuses. Our dedicated staff and on-campus security team are available all day, every day to support you.



WELCOMING ENVIRONMENT

You'll join an amazing community of residents and staff from all over Australia and the world. We foster a safe, happy and healthy environment that helps you to thrive. Our residents and staff share a common goal of creating a space where everyone will feel welcome, respected and comfortable being their true self.



AFFORDABLE AND CONVENIENT

Utilities such as water, gas, electricity, internet, and even laundry are all included in your rental rate. Living on campus also helps you save money and time on commute; not only are you close to your classes, but also within a walking distance to support services, student clubs, and food outlets.



SUPPORT AND ORIENTATION

Easy access to support services, including Wellbeing, Counselling, Accessibility and Inclusion, Financial Support, and more. You are also invited to participate in our exclusive weeklong residential orientation program before each semester begins.

1. Quacquarelli Symonds (QS), 2024, QS World University Rankings 2025
2. Quality Indicators for Learning and Teaching (QILT), 2023, 2022 Employer Satisfaction Survey
3. Quality Indicators for Learning and Teaching (QILT), 2023, 2022 Employer Satisfaction Survey
4. Quality Indicators for Learning and Teaching (QILT), 2024, 2023 Graduate Outcomes Survey - Longitudinal
5. Quality Indicators for Learning and Teaching (QILT), 2024, 2023 Graduate Outcomes Survey - Longitudinal
6. Quacquarelli Symonds (QS), 2023, QS World University Rankings: Sustainability 2024

RESIDENTIAL LIFE (AKA RES LIFE) AT LA TROBE IS LIKE NO OTHER

Create lasting memories, make lifelong friendships and experience new adventures with Res Life.

Enjoy a variety of fun and safe events throughout the year within an inclusive environment. Res Life ensures a well-rounded student experience — hosting events and programs that cover all aspects of the student lifestyle from Social to Community, Academic, Cultural and Health and Wellbeing.

Attend an Australian rules (AFL) football game, take a trip to the Great Ocean Road, ski Victoria's alpine slopes, attend fitness sessions, dance up a storm at a neon party, test your luck at Drag Queen Bingo, check in with RUOK? events, dress up for the annual Residential Ball and a whole lot more.

Res Life also provides Health and Wellbeing support. We individually check in with all our residents to ensure you succeed personally, academically and socially. Our door is always open!

All our residents have the opportunity to develop leadership skills through our Residential Leader program. This program offers students the chance to enhance their leadership abilities and key employability skills, with professional training provided throughout the year.

Throw yourself into campus life with Living at La Trobe and make the most of our exclusive Res Life program.



WHAT'S INCLUDED?

Furnished room



Utilities and unlimited Wi-Fi



Laundry facilities



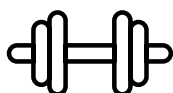
A full calendar of fun activities and events



Fully secured room access with individual keycard entry



Discounted membership to La Trobe's Indoor Sports Centre



24/7 support staff



Range of amenities*

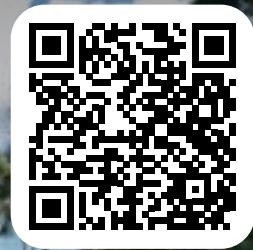


* Amenities may include study rooms, BBQs, communal lounge rooms, game rooms and more. See the individual residence pages for details.

MELBOURNE CAMPUS (BUNDOORA)

**ENJOY LIVING IN OUR UNIQUELY
BEAUTIFUL 235-HECTARE BUSHLAND
SETTING, CONVENIENTLY LOCATED IN
METROPOLITAN MELBOURNE.**

MELBOURNE CAMPUS (BUNDOORA)



LEARN MORE:
latrobe.edu.au/accommodation/locations/melbourne

FROM THE STATE-OF-THE-ART SPORTS PARK TO OUR ON-CAMPUS WILDLIFE SANCTUARY AND A WIDE RANGE OF EVENTS RUNNING THROUGHOUT THE YEAR, THERE'S ALWAYS SOMETHING TO DO AT OUR BUNDOORA CAMPUS. YOU'RE A STONE'S THROW AWAY FROM THE CENTRE OF CAMPUS IN YOUR HOME AWAY FROM HOME, WHETHER IN OUR RESIDENTIAL COLLEGES OR THE ARCHITECTURALLY DESIGNED APARTMENTS.

You'll be close to everything when you live on campus. From food and beverage retailers, specialty shops, a post office, and the library:

- 3-minute walk to the Agora, the centre of campus
- 5-minute walk to tram and bus stops
- 10-minute walk to the local shopping centre
- 16 km from Melbourne CBD
- 25-minute drive to Melbourne Airport
- 10-minute walk from The Home of the Matildas

You will also have access to:

- 24-hour on-site support staff and residential leaders
- Ample on-site parking (parking permits required)
- Uni-Safe service – after dark, security officers are available to escort you around campus, campus car parks and local transport points such as the local train stations or tram stop
- Discounted La Trobe Sports Centre membership so you can exercise, train and play in leading facilities, like our Home of the Matilda's ground
- Outdoor BBQ areas throughout the Living at La Trobe precinct

RESIDENTIAL MEAL PLANS

Take the stress out of cooking and join us at the Dining Hall where all needs and tastes are catered for. Located in the heart of the Living at La Trobe precinct, our Dining Hall offers daily breakfast and dinner buffet meals to all residents who choose to opt-in for a meal plan.

Meals are expertly prepared by the Trippas White Group who have years of experience in curating student meal plans using fresh and locally sourced ingredients – with input from residents sought throughout the year.



NORTH AND SOUTH APARTMENTS

Affectionately known as NASA, our newest accommodation building offers a vibrant, modern take on student housing. There's something for everyone with a range of studios and multi-bedroom apartments shared between four and six people.

Room features

Studio room

- Furnished with a king single bed, desk, chair, wardrobe, fan, central heating and cooling
- Kitchenette
- Ensuite bathroom

Multi-bedroom apartments

- Each bedroom is furnished with a king single bed, desk, chair, wardrobe and fan
- Kitchen, dining, and living area
- Two shared bathrooms

Building features

- Each floor contains a full kitchen, common dining space and common recreational space
- Study spaces
- Laundry facilities



GLENN COLLEGE

Experience the rich history of our esteemed residence, Glenn College, where a stimulating intellectual environment seamlessly merges with a vibrant social community.

Room features

- Single dormitory-style room
- Furnished with a single bed, desk, chair, wardrobe and heating

Building features

- Communal kitchens
- Shared bathrooms
- Study spaces
- Recreational spaces
- Laundry facilities



CHISOLM COLLEGE

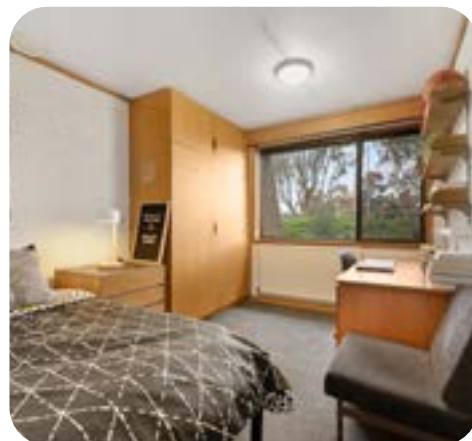
Chisholm College offers a unique residential experience that embraces global perspectives and fosters a diverse community of learners. Nestled in a tranquil environment, Chisholm College is thoughtfully integrated into a beautifully landscaped space.

Room features

- Single dormitory-style room
- Furnished with a single bed, desk, chair, wardrobe and heating

Building features

- Communal kitchens
- Shared bathrooms
- Study spaces
- Recreational spaces
- Theatre room
- Laundry facilities



MENZIES COLLEGE

Known for its nurturing and relaxed living environment, it is a place where a robust sense of community flourishes, providing unwavering support and fostering lifelong connections.

Room features

- Single dormitory-style room
- Furnished with a single bed, desk, chair, wardrobe and heating

Building features

- Communal kitchens
- Shared bathrooms
- Study spaces
- Recreational spaces
- Theatre room
- Laundry facilities



BENDIGO CAMPUS



LEARN MORE:
[latrobe.edu.au/accommodation/
locations/bendigo](https://latrobe.edu.au/accommodation/locations/bendigo)



LOCATED IN FLORA HILL, THE LIVING AT LA TROBE PRECINCT IS SURROUNDED BY SCENIC BUSHLAND AND OFFERS A LAID-BACK LIFESTYLE. TAKE A BREATH OF FRESH AIR AND KEEP YOUR EYES PEELED FOR A KANGAROO OR TWO WHEN LIVING WITH US IN BENDIGO. OUR BENDIGO CAMPUS IS LED BY MARG O'ROURKE WHO WAS AWARDED THE PRESTIGIOUS MEDAL OF THE ORDER OF AUSTRALIA (OAM) IN THE KING'S BIRTHDAY 2024 HONOURS LIST.

We have several residences on campus, where you can enjoy the freedom of affordable self-catered accommodation close to everything you need and access to on-site staff all day, every day.

- 3 km from Bendigo CBD
- 2.5 km from Bendigo train station
- Less than two hour drive or train ride to Melbourne
- Located next to Greater Bendigo National Park

You will also have access to:

- 24 hour support staff available on site
- Ample on-site parking (parking permits required)
- Residential leaders living on-site to provide peer support
- Uni-Safe service – security officers are available to escort you around campus, campus car parks and local transport points such as the local train stations or tram stop
- Discounted La Trobe Sports Centre membership
- Outdoor BBQ areas throughout the Living at La Trobe precinct

HILLSIDE APARTMENTS

Nestled just a short walk from the heart of the Bendigo campus, Hillside Apartments consist of six contemporary apartment blocks. It is home to 200 residents and is mobility accessible across all floors.

Room features

- Single dormitory-style room
- Furnished with a king single bed, desk, chair, wardrobe, heating and cooling

Building features

- Communal kitchens
- Shared bathrooms
- Recreational spaces
- Laundry facilities



THE TERRACES

Conveniently situated a leisurely stroll away from the campus centre, The Terraces offer the added delight of picturesque bushlands. These fully furnished houses boast eight single rooms, providing comfortable accommodations for residents seeking a serene and inviting living space.

Room features

- Single dormitory-style room
- Furnished with a single bed, desk, chair and wardrobe

Building features

- Communal kitchen
- Shared bathroom
- Communal living area
- Common recreational space
- Laundry facilities



THE UNITS

Immerse yourself in the lively spirit of The Units, where a vibrant community atmosphere thrives. It is perfectly located on campus with shared spaces, perfect for enjoying well-deserved relaxation and leisure activities.

Room features

- Single dormitory-style room
- Furnished with a single bed, desk, chair, wardrobe and heating

Building features

- Communal kitchens
- Shared bathrooms
- Recreational spaces
- Study spaces
- Laundry facilities



THE VILLAS

Within the Robert Holmes Village on the border of campus, surrounded by peaceful bushland, Villas are offered to groups of second year, third year and postgraduate students, many who spent their first years of university living at other Bendigo Campus residences.

Room features

- Single dormitory-style room
- Furnished with a single bed, desk, chair and wardrobe

Building features

- Communal kitchen
- Shared bathroom
- Communal living area
- Common recreational space
- Laundry facilities



ORDE HOUSE

This is one of our smaller residences, recently renovated and able to accommodate 24 students. It has single bedrooms that have shared bathrooms and laundry areas with communal kitchen and living area.

Room features

- Single dormitory-style room
- Furnished with a king single bed, desk, chair, wardrobe, heating and cooling

Building features

- Communal kitchens
- Shared bathrooms
- Communal living area
- Recreational facilities
- Laundry facilities



ALBURY-WODONGA CAMPUS



LEARN MORE:
latrobe.edu.au/accommodation/locations/albury-wodonga

SITUATED NEAR THE BORDER OF VICTORIA AND NEW SOUTH WALES, THE ALBURY-WODONGA CAMPUS IS LOCATED IN A CLOSE-KNIT COMMUNITY AGAINST THE BACKDROP OF THE MURRAY RIVER.

Experience the tranquillity of regional Victoria while living on campus in Albury-Wodonga, where you'll be conveniently located:

- 2-minute walk to bus stop
- 4 km to Wodonga town centre
- 13-minute drive to Albury town centre
- 13-minute drive to Albury Airport

You will also have access to:

- Student leaders living on site to provide peer support
- Access to the Uni-Safe services – after dark, security officers are available to escort students around campus and campus car parks
- Outdoor BBQ facilities



MCFARLANE'S HILL

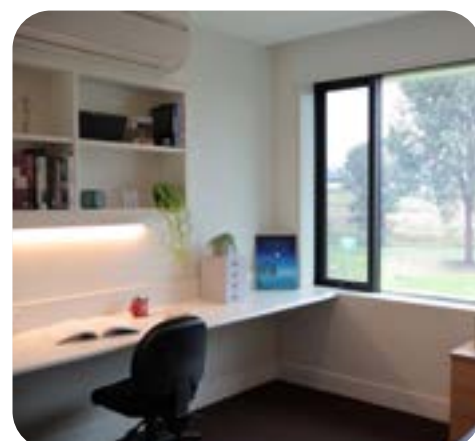
Our residence offers a cozy and inclusive environment with a total of 28 beds, ensuring a close-knit community atmosphere. Nestled in a picturesque location, just moments away from the centre of campus, McFarlane's Hill provides convenience and easy access to academic facilities.

Room features

- Single dormitory-style room
- Furnished with a king single bed, desk, chair, wardrobe, heating and cooling

Building features

- Communal kitchens
- Shared bathrooms
- Communal living area
- Laundry facilities



REGIONAL ACCOMMODATION



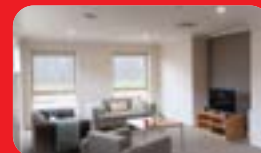
BALLARAT, MELTON, MILDURA AND SHEPPARTON

Student accommodation in Ballarat, Melton, Mildura and Shepparton are homes among residential areas with ease of access to regional life and amenities. They are ideal for students completing placement or regional studies.

Features

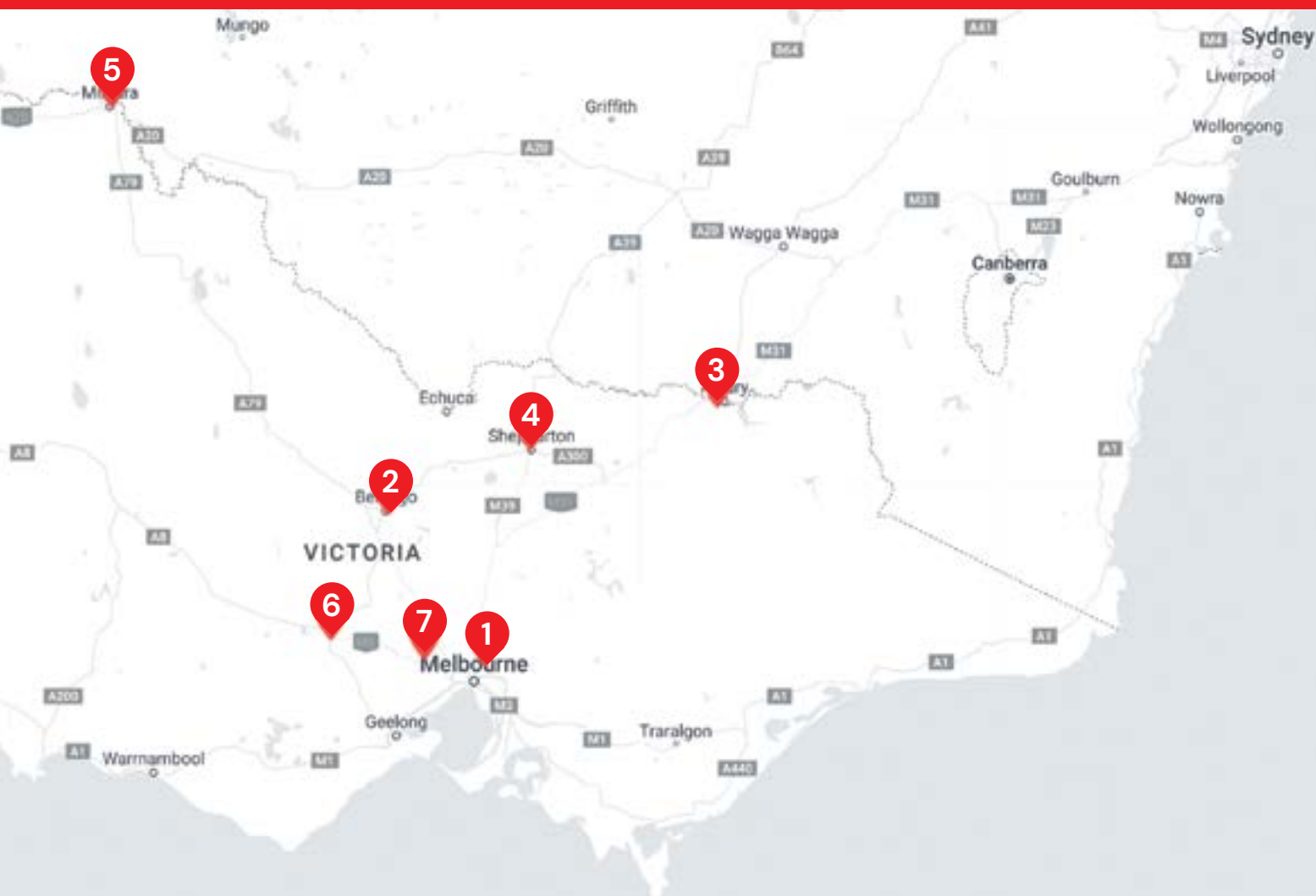
- Furnished with a single bed, desk, chair, wardrobe, heating and cooling
- Communal kitchen
- Shared bathroom
- Common living area
- Laundry facilities

LEARN MORE:
latrobe.edu.au/accommodation/locations/regional



ACCOMMODATION LOCATIONS

- | | |
|-------------------------------|------------|
| 1 Melbourne Campus (Bundoora) | 5 Mildura |
| 2 Bendigo Campus | 6 Ballarat |
| 3 Albury-Wodonga Campus | 7 Melton |
| 4 Shepparton | |





Contact us

LaTrobe University
Victoria 3086 Australia

General enquiries

T +61 3 9479 1071
E living@latrobe.edu.au
W latrobe.edu.au/accommodation



LA TROBE
UNIVERSITY
AUSTRALIA

APPLY NOW

latrobe.edu.au/accommodation/how-to-apply