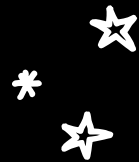


COURSE GUIDE


HEALTH



2027



WHY STUDY HEALTH AT LA TROBE



LOOKING FOR A PATH THAT COMBINES A PROFESSIONAL CAREER AND IMPACT? YOU'VE FOUND THE RIGHT PLACE TO CHOOSE YOUR NEXT STEP. WITH COURSES DESIGNED IN PARTNERSHIP WITH INDUSTRY AND OPPORTUNITIES TO SPECIALISE IN WHAT YOU'RE PASSIONATE ABOUT, YOU CAN BUILD AN IN-DEMAND SKILLSET.



1. Quality Indicators for Learning and Teaching (QILT), 2025, *Nursing (Undergraduate)*
2. Times Higher Education (THE), 2025, *World University Rankings 2026 by Subject: Medical and Health*
3. ShanghaiRanking, 2025, *Global Ranking of Academic Subjects 2025: Public Health*
4. Quality Indicators for Learning and Teaching (QILT), 2025, *Health Services & Support (Undergraduate)*
5. Times Higher Education (THE), 2026, *Psychology University Rankings 2026*
6. Quality Indicators for Learning and Teaching (QILT), 2025, *Dentistry (Undergraduate)*



- ✳️ We're #1 in Victoria for undergraduate nursing employment outcomes.¹
- ✳️ We're ranked in the world's top 175 for medical and health subjects.²
- ✳️ We're ranked in the world's top 75 for public health.³
- ✳️ We're ranked in the top 10 nationally for health services graduate employment.⁴
- ✳️ We're ranked in the global top 175 for psychology.⁵
- ✳️ We're #1 in Australia for learning engagement in dentistry.⁶
- ✳️ Study podiatry at the only university in Australia where graduates are qualified to prescribe scheduled medicines.
- ✳️ You'll gain hands-on experience through placements with leading health providers.
- ✳️ Study at Australia's largest and most established rural health school which offers high-quality research programs to make rural health matter locally, nationally and worldwide.

Meet our Health Schools

We're home to a diverse group of health schools that set you up to make an impact in the area you're passionate about.


School of Allied Health,
Human Services and Sport

School of Nursing
and Midwifery

School of Psychology
and Public Health

La Trobe Rural Health School

STUDY HOW AND WHERE YOU WANT



NOT ALL BIG MOVES MEAN LEAVING HOME. WITH HEALTH COURSES AVAILABLE AT MULTIPLE CAMPUSES ACROSS VICTORIA, YOU CAN STUDY CLOSER TO WHERE YOU LIVE. SOME OF OUR HEALTH COURSES EVEN OFFER ONLINE SUBJECTS SO YOU CAN LEARN FROM WHEREVER YOU ARE.¹

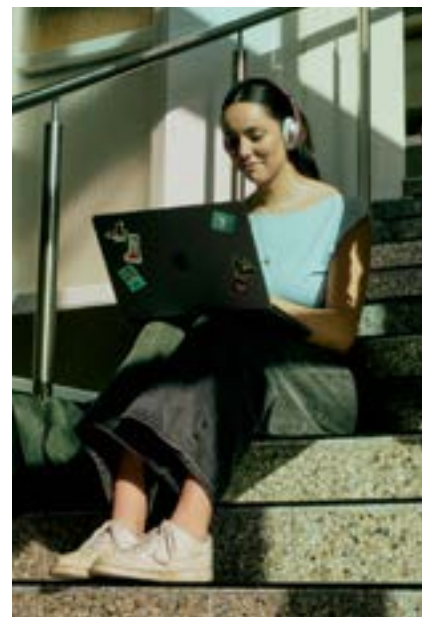


¹. Please see our website for more details on which courses offer online study options.



Melbourne (Bundoora) Campus

At our main campus, you'll be surrounded by bushland – while still being just a tram ride from the Melbourne city. With plenty of health courses to choose from, you can get hands-on in our Sports Performance Hub, Podiatry Clinic, Eye Clinic, and more, like the upcoming \$82M clinical teaching building that's set to be the largest interdisciplinary university clinic in Victoria. And with on-campus accommodation options, student clubs and lots of events, making the most of uni is easy here.



Bendigo Campus

Neighbouring both the Bendigo CBD and the Greater Bendigo National Park. Bendigo Campus is home to some of our biggest health courses – dental science, pharmacy, paramedic practice, biomedical science and oral health science.



Australia's largest rural health school



We're focused on promoting equitable outcomes for regional and rural populations. That means training and empowering students like you to fulfil national demand for healthcare workers. Whether you already live regionally or are planning to move for uni, our Rural Health School gives you access to high-quality teaching and research, as well as local clinical placement and fieldwork opportunities.

Mildura Campus

Discover the perks of learning in small class-sizes when you study nursing, social work or rural health. With close ties to the community, you'll get a practical learning experience with promising employment outcomes through industry partnerships and placements.

Shepparton Campus


A proudly diverse hub of multiculturalism, our redeveloped campus offers advanced clinical nursing laboratories and upgraded spaces so you can study nursing, rural health and social work in modern facilities.

Albury-Wodonga Campus

Get qualified for a career that makes a real impact with courses in social work, psychology, nursing, biomedical science, the highly regarded Rural Medical Pathway and more. Located between the Murray River and the Alps, you'll be studying in a uniquely Australian environment.



THE FUTURE OF WORK STARTS HERE



GENERATIVE AI IS RAPIDLY TRANSFORMING THE HEALTHCARE INDUSTRY. WITH DEMAND FOR QUALIFIED PROFESSIONALS SKILLED IN AREAS OF AI, DATA ANALYTICS AND DIGITAL HEALTH, IT'S IMPORTANT YOU'RE PREPARED FOR THE ECONOMY OF TOMORROW.



Broad health network

Our partnerships across metro and regional Victoria gives students exposure to diverse populations, conditions and care settings.



Practice in realistic scenarios

Learn in simulation labs and clinics designed to replicate real clinical settings, before stepping into placement. At the La Trobe Sports Park, you can get practice in state-of-the-art sport and exercise science facilities.



Career ready advantage

Sector-leading employability programs and projects to develop skills employers want.



Industry placements

Compulsory and elective professional placements that tests your knowledge in a real-world environment.



Learning with industry

Mentoring, networking, specialist career consultations, workshops, leadership programs and more. We've also partnered with health and sport organisations so students like you can get on-the-go experience with leaders in the field.



Prepare for an in-demand industry

Did you know that healthcare and social assistance is Australia’s biggest industry?¹ And it’s continuing to grow – and change.

The World Economic Forum estimates that around 170 million new jobs will be created by global macro trends this decade, which is equivalent to 14% of total employment today. It’s also estimated that there’ll be a worldwide shortage of 11 million health workers by 2030.²

- AI-focused curriculum**
 We’re embedding AI across our curriculum, ensuring our teachers and students are equipped with the AI skills needed for the future workplace.

- AI upskilling**
 We’re launching bespoke AI training for students, teachers and staff to foster AI fluency, responsible adoption and ethical use across the uni.

- OpenAI for all**
 We’re the first university in Victoria to sign a deal with OpenAI, ensuring all students will have access to ChatGPT Edu in 2027.

- Powered NVIDIA**
 We’re the first uni in Australia to deploy a NVIDIA DGX H200, pushing the boundaries of AI-driven research.

1. Jobs and Skills Australia, 2025, *Occupation and Industry Profiles: Health Care and Social Assistance*
 2. WHO, 2025, *Health Workforce*



FEATURE COURSE

BACHELOR OF OCCUPATIONAL THERAPY (HONOURS) 

OVERVIEW Help people maximise their quality of life and reach their full potential. Discover the science behind human activity and get the know-how to conduct evidence-based occupational therapy assessments and interventions for people of all ages and backgrounds. Gain essential knowledge in occupational science, anatomy, physiology and psychology. Uncover the best treatment options for people with special needs and chronic conditions. Learn with a combination of face-to-face tutorials and workshops, online learning and hands-on experience, including 1,000 hours of professional placements. Graduates of the Bachelor of Occupational Therapy (Honours) will be eligible to apply for registration with the Occupational Therapy Board of Australia as an Occupational Therapist, subject to additional or ongoing requirements beyond completion of the degree.

PREREQUISITES Units 3 and 4: a study score of at least 30 in English (EAL) or at least 25 in English other than EAL.

INTAKE Semester 1

DURATION 4 years

CAREER PATHS

- Public and private hospitals
- Rehabilitation services
- Community health organisations
- Corporate and industrial workplaces
- Government departments and agencies

ATAR	89.70	75.20
ASPIRE ATAR	80.00	65.00



Advice for future students

Take full advantage of everything university has to offer. Get involved – join clubs, attend events, and explore the campus. La Trobe provides a wide range of opportunities, and stepping out of your comfort zone can lead to incredible experiences.

Inge

Bachelor of Occupational Therapy (Honours)

The highlight of studying

Placements have provided invaluable industry experience and strengthened my confidence. Plus, the vibrant student culture, particularly in the Agora, has been a fantastic part of my journey.



BACHELOR OF BIOMEDICAL SCIENCE F © ①

OVERVIEW	Combining the fields of biology and medical science, you'll open doors to careers across high-demand sectors including education, healthcare, media and research. Explore advanced topics in biomedical sciences that underpin your knowledge across chemistry, metabolic biochemistry, pharmacology and the growing need for expertise in immunology. Then deepen your expertise across topics including applied immunology, cancer research, response to infectious disease, and cardiovascular and neurological systems.
PREREQUISITES	Units 3 and 4: a study score of at least 25 in English (EAL) or at least 20 in English other than EAL.
INTAKE	Semester 1 & 2
DURATION	3 years
CAREER PATHS	<ul style="list-style-type: none"> - Biomedical, biotechnology and pharmaceutical industries - Medical sales - Education - Media and communications - Hospital and government departments

BEN A-W

ATAR	60.55	64.45
ASPIRE ATAR	50.00	50.00

BACHELOR OF BIOMEDICAL SCIENCE (MEDICAL) F ©

OVERVIEW	Gain a pathway into the graduate entry Doctor of Medicine Rural Pathway offered by the University of Melbourne in Shepparton for regional and rural students intending to practice medicine in a regional or rural location. In this pre-medicine course, you'll combine the fields of biology, pharmacology and medicine. You will learn about the human body, its structure and its functions. This includes understanding how disease manifests and how drug strategies are used to treat disease. You'll learn practical skills needed to explore the underlying molecular basis of acute and chronic illnesses.
PREREQUISITES	Units 3 and 4: a study score of at least 30 in English (EAL) or at least 25 in English other than EAL.
INTAKE	Semester 1
DURATION	3 years
CAREER PATHS	Students completing the Bachelor of Biomedical Science (Medical) will have a guaranteed place in the University of Melbourne's Doctor of Medicine (Rural Pathway) ¹ . This degree is designed to support regional and rural students to study and then practice in a regional or rural location.

BEN A-W

ATAR	NP	NP
ASPIRE ATAR²	80.00	80.00

EXTRA ENTRY REQUIREMENTS

The Bachelor of Biomedical Science (Medical) is subject to extra entry requirements in addition to meeting minimum ATAR or Aspire ATAR requirements, including multiple mini-interviews & evidence of rural status. See the 'Entry requirements & pathways' tab on the course page on our website for details.

1. The University of Melbourne guarantees students who graduate from the Bachelor of Biomedical Science (Medical) with a 70 weighted average mark (WAM) a place in the Doctor of Medicine (Rural Pathway) in Shepparton.
2. Aspire ATAR conditional offer guarantees an interview only.

BACHELOR OF BIOMEDICINE © ①

OVERVIEW	Get the technical and applied expertise you need to establish your biomedical career with our Bachelor of Biomedicine. Start with how the body works as you build fundamental knowledge in chemistry, bioscience and health. Take a close look at infectious diseases, including the factors that drive epidemics and pandemics. Then choose a combination of up to two majors or electives aligned to your personal career goals and industry demand. You'll graduate with your majors on your academic transcript and, depending on your choice of majors, a pathway to specialist postgraduate studies in research, medicine, physiotherapy and more.
PREREQUISITES	Units 3 and 4: a study score of at least 25 in English (EAL) or at least 20 in English other than EAL.
INTAKE	Semester 1
DURATION	3 years
MAJORS	Cancer, heart and brain diseases, Immunology and infectious disease, Molecular and cellular biochemistry, Physiology and pharmacology
CAREER PATHS	<ul style="list-style-type: none"> - Biomedical researcher - Biotechnologist - Biochemist - Microbiologist - Clinical research associate

MEL

ATAR	60.00
ASPIRE ATAR	50.00

BACHELOR OF DENTAL SCIENCE (HONOURS) F © R

OVERVIEW	Our Bachelor of Dental Science (Honours) teaches you the foundations of dental science and gives you hands-on experience in clinical placements across Victoria, so you'll be ready for a successful career in dentistry. You'll work to improve oral health through prevention, education and clinical care at Australia's largest rural health school and get hands-on with treating patients under the supervision of experienced clinicians. In Years 4 and 5, you will complete a community-based group project developing solutions for public health problems or an independent research project under the supervision of experienced researchers.
PREREQUISITES	Units 3 and 4: a study score of at least 30 in English (EAL) or at least 25 in English other than EAL.
INTAKE	Semester 1
DURATION	5 years
CAREER PATHS	<ul style="list-style-type: none"> - Public sector - Private practice - Research

BEN RE*

ATAR	99.95	99.05
ASPIRE ATAR	95.00	80.00

* Only regional students are eligible to apply for regional entry.

PLEASE SEE WEBSITE FOR DETAILS

F First Nations Australian entry | © Aspire Community Impact | © Aspire Everyday Impact | ① Aspire Academic Impact | **NA** ATAR not applicable | **NP** ATAR not published | **RE** Regional entry | R Regional Benefits Program

BACHELOR OF FOOD AND NUTRITION © ①

OVERVIEW	Designed by leading nutrition experts and in collaboration with industry, you'll gain the skills you need to empower individuals and communities to live healthier lifestyles and reduce the rising rates of chronic disease. You'll get practical hands-on experience in modern science labs and kitchens while exploring topics such as environmental sustainability of our food system, sustainable diets, food product development, culture and food, and nutrition and disease. The Bachelor of Food and Nutrition is a pathway into the Master of Dietetics. Graduates of the Bachelor of Food and Nutrition may apply for membership with the Nutrition Society of Australia, membership may be subject to additional or ongoing requirements beyond completion of the degree.
PREREQUISITES	Units 3 and 4: a study score of at least 25 in English (EAL) or at least 20 in English other than EAL.
INTAKE	MEL Semester 1 ONL See website for online study periods
DURATION	3 years, 2.5 years accelerated (Melbourne only)
CAREER PATHS	<ul style="list-style-type: none"> - Nutritionist - Nutrition educator - Nutrition policy officer - Product developer - Quality assurance officer

MEL ONL

ATAR	60.50	66.00
ASPIRE ATAR	50.00	50.00

BACHELOR OF HEALTH INFORMATION MANAGEMENT © ①

OVERVIEW	Combine the clinical and business sides of healthcare and use data to make a difference to the quality of patient care. Learn the language of medicine, understanding the fundamental structures of human anatomy and physiology and how they function. Develop skills in health informatics and data analysis, including how to implement and manage health information systems and how to analyse, interpret and disseminate complex health data. Build knowledge in health classification and the coding of complex clinical data so it can be used to inform and evaluate health services. Get experience with over 50 days of supervised professional placement with our prestigious health partners. Eligible graduates may apply to the Health Information Management Association of Australia (HIMAA) for professional membership.
PREREQUISITES	Units 3 and 4: a study score of at least 30 in English (EAL) or at least 25 in English other than EAL.
INTAKE	Semester 1
DURATION	3 years
CAREER PATHS	<ul style="list-style-type: none"> - Health information manager - Clinical coder - Health data analyst - System or business analyst - Medical research officer

MEL ONL

ATAR	62.15	NP
ASPIRE ATAR	50.00	50.00

BACHELOR OF HEALTH SCIENCES F © ①

OVERVIEW	Examine the way our minds, society, environment and political structures affects the health of individuals, families and communities at local, national and international levels. Build your skills in scientific thinking, lab and fieldwork, problem solving, collaboration, professional conduct and scientific communication. Broaden your expertise with a choice of nine majors and the option of second majors and minors in health sciences or a range of other disciplines. Graduate ready to make real impact on health policy and practice or gain a pathway into postgraduate allied health and other health degrees.
PREREQUISITES	Units 3 and 4: a study score of at least 25 in English (EAL) or at least 20 in English other than EAL.
INTAKE	Semester 1 & 2
DURATION	3 years
MAJORS	<p>MELBOURNE: Allied health, Digital health, Environmental health, Food and nutrition, Health promotion, Health, wellbeing and performance, Psychological science, Public health, Rehabilitation counselling</p> <p>ONLINE: Digital health, Environmental health, Health promotion, Health, wellbeing and performance, Psychological science, Public health, Rehabilitation counselling</p>
CAREER PATHS	<ul style="list-style-type: none"> - Public health manager - Health promotion coordinator - Nutritionist - Digital health officer - Environmental health officer

MEL ONL

ATAR	55.05	55.85
ASPIRE ATAR	50.00	50.00

BACHELOR OF ORAL HEALTH SCIENCE F © ① R

OVERVIEW	Develop your understanding of oral health promotion and the prevention and treatment of oral diseases to successfully practice as a registered oral health therapist. Get hands-on experience through clinical placements and treat patients under the supervision of experienced clinicians. Gain access to our on-campus clinical facility to practise your skills in dentistry, special needs dentistry, pharmacology and oral health practice, preparing you to undertake external clinical placements. The Bachelor of Oral Health Science is accredited by the Australian Dental Council. Graduates may be eligible to apply for registration with the Dental Board of Australia, pending additional or ongoing requirements beyond completion of the degree.
PREREQUISITES	Units 3 and 4: a study score of at least 30 in English (EAL) or at least 25 in English other than EAL.
INTAKE	Semester 1
DURATION	3 year (2.5 years accelerated)
CAREER PATHS	<ul style="list-style-type: none"> - Oral health therapist - Dental clinics - Community health centres - Indigenous health collectives

BEN RE*

ATAR	99.95	98.30
ASPIRE ATAR	70.00	70.00

* Only regional students are eligible to apply for regional entry.

PLEASE SEE WEBSITE FOR DETAILS

F First Nations Australian entry | © Aspire Community Impact | ① Aspire Everyday Impact | ① Aspire Academic Impact | **NA** ATAR not applicable | **NP** ATAR not published | **RE** Regional entry | R Regional Benefits Program



FEATURE COURSE

BACHELOR OF NURSING 📄 🌐 📱

OVERVIEW	Get the skills and knowledge you need to care for people of all ages while building your resilience to navigate a rapidly evolving healthcare sector. Learn from leading clinicians and academics and gain hands-on experience in our state-of-the-art simulation labs. Move into real-world healthcare environments with La Trobe's top-tier industry partners in your first year. Develop a strong foundation in a range of specialties such as acute care, chronic illness, Indigenous health and mental health. Graduate ready to apply to become a registered nurse (RN) with AHPRA.
PREREQUISITES	Units 3 and 4: a study score of at least 30 in English (EAL) or at least 25 in English other than EAL.
INTAKE	Semester 1
DURATION	3 years
CAREER PATHS	<ul style="list-style-type: none"> - Clinics and hospitals - Homes and hospices - Schools and universities - Community health centres - Government agencies

	MEL	BEN	A-W	MIL	SHP
ATAR	70.15	63.60	64.55	63.30	57.85
ASPIRE ATAR	55.00	50.00	50.00	50.00	50.00

Be ready for real-world practice

We've invested millions into our nursing and midwifery facilities at every campus. Our clinical learning environments provide realistic settings where students can master practice-based skills in a safe and supportive environment, ensuring they're ready for real practice settings.

Our simulation labs provide an increased level of complexity on our clinical learning environments, enabling students to work in real-life simulated practice scenarios with high-tech manikins. Here, you'll develop your clinical decision-making and hands-on skills so you can respond appropriately in real-life situations.

We're also committed to reducing the transition between uni and working with our unique clinical school model. Unlike other nursing schools, we have dedicated university teaching space on site at key Melbourne metropolitan health services (Alfred Health, Austin Health, Melbourne Health and Northern Health) where students in their final years will learn. This means that students in their final year can spend most of that year on site at a major Melbourne metropolitan hospital.

BACHELOR OF ORTHOPTICS (HONOURS)

OVERVIEW	Make a real impact in the vision and visual function of others. In this degree, you'll study the anatomy and physiology of the eye to understand vision and visual function, and learn how to help people with eye disorders such as strabismus (eye turns), eye diseases and low vision. Learn how to use specialised technology such as retinal cameras and ultrasonography instruments and optical vision aids. Gain clinical experiences from your second year, with placements in hospitals, private eye clinics and our on-campus eye clinic. Undertake an industry-based or research project, where you'll develop project management and research skills. Get the opportunity to complete a placement beyond Melbourne in your final year with one of our partner agencies in regional Victoria, interstate or overseas – including in developing countries.
PREREQUISITES	Units 3 and 4: a study score of at least 30 in English (EAL) or at least 25 in English other than EAL. Units 3 and 4: a study score of at least 25 in one of Biology, Chemistry, Health and Human Development, Physical Education, Physics, Psychology or any Mathematics.
INTAKE	Semester 1
DURATION	4 years
CAREER PATHS	<ul style="list-style-type: none"> – Hospitals – Specialist private eye clinics – Community and rehabilitation centres – Ocular pharmaceutical and device manufacturers – Not-for-profit organisations

ATAR	71.30
ASPIRE ATAR	60.00

BACHELOR OF PARAMEDIC PRACTICE WITH HONOURS

OVERVIEW	Gain the knowledge, practical skills and professional attributes to excel in paramedicine. You'll gain a thorough understanding of human anatomy, physiology and pathophysiology, as well as pharmacology and disease processes. Develop hands-on skills through simulated scenarios in advanced life support (ALS) techniques, trauma care, cardiac care and the care of patients with extended care medical needs. Build experience with extensive clinical placement rotations in a variety of settings. Choose to undertake a research pathway in your honours year. Once you graduate, you'll meet the professional standards required to practice as a paramedic in Australia.
PREREQUISITES	Units 3 and 4: a study score of at least 30 in English (EAL) or at least 25 in English other than EAL. Units 3 and 4: a study score of at least 20 in two of Biology, Chemistry, Health and Human Development, any Mathematics, Physical Education, Physics or Psychology.
INTAKE	Semester 1
DURATION	4 years
CAREER PATHS	<ul style="list-style-type: none"> – Paramedic – Air ambulance paramedic – Industrial paramedic – Community paramedic

ATAR	62.25
ASPIRE ATAR	50.00

BACHELOR OF PHARMACY (HONOURS)

OVERVIEW	Take the first steps on your path to playing a vital role in your community and a successful career as a pharmacist. Develop the practical, technical and human skills needed to provide medicines to the public. Understand how systems of the body work and how diseases and medicines affect these systems. Access our on-campus training pharmacy and get work-ready by participating in a range of community and hospital placements. Graduate eligible to complete a one-year internship and take the Pharmacy Board of Australia exams to qualify as a professional pharmacist. Accredited by the Australian Pharmacy Council (APC), graduates may be eligible to apply for registration with the Pharmacy Board of Australia, subject to additional or ongoing requirements beyond completion of the degree.
PREREQUISITES	Units 3 & 4: a study score of at least 30 in English (EAL) or at least 25 in English other than EAL.
INTAKE	Semester 1
DURATION	4 years
CAREER PATHS	<ul style="list-style-type: none"> – Community pharmacist – Hospital pharmacist – GP clinics – In-home medicine reviews – Aged care facilities

ATAR	75.05
ASPIRE ATAR	60.00

BACHELOR OF PHYSIOTHERAPY (HONOURS)

OVERVIEW	With our Bachelor of Physiotherapy (Honours), you'll start building practical skills straightaway and undertake clinical training equivalent to six months of workplace experience. In your Honours year, you'll undertake research or industry-based project work where you'll solve real problems relating to human health and physical performance. You can take your physiotherapy degree global with an international placement or study opportunities, or keep it local with placements throughout Melbourne and regional Victoria. The choice is yours. This course is accredited by the Australian Physiotherapy Council and graduates may be eligible to apply for registration with the Physiotherapy Board of Australia, subject to additional or ongoing requirements beyond the completion of the degree.
PREREQUISITES	Units 3 and 4: a study score of at least 30 in English (EAL) or at least 25 in English other than EAL. Units 3 and 4: a study score of at least 25 in two of Biology, Chemistry, Physics, General Mathematics, Mathematics Methods, Specialist Mathematics or Physical Education.
INTAKE	Semester 1
DURATION	4 years
CAREER PATHS	<ul style="list-style-type: none"> – Private practice – Hospitals and community health centres – Elite sporting organisations – Rehabilitation services

ATAR	96.00	95.25	92.00
ASPIRE ATAR	95.00	90.00	90.00

* Only regional students are eligible to apply for regional entry.

PLEASE SEE WEBSITE FOR DETAILS

 First Nations Australian entry |  Aspire Community Impact |  Aspire Everyday Impact |  Aspire Academic Impact | **NA** ATAR not applicable | **NP** ATAR not published | **RE** Regional entry |  Regional Benefits Program



BACHELOR OF PODIATRY (HONOURS) [©]

OVERVIEW	Take the first step towards helping others maintain and improve their mobility and independence. In this degree, you'll benefit from being enrolled in the only podiatry program in Australia where graduates are qualified to prescribe scheduled medicines, enhancing your scope and impact in patient care. Learn from experienced podiatrists, world-leading researchers and teachers at our on-campus clinic and on placement. Explore topics such as human anatomy, physiology, medical conditions, pharmacology, biomechanics, and sport injuries and management. Utilise special podiatry equipment such as our gait analysis systems, 3D laser scanners and doppler ultrasounds. Learning will span diverse patient populations such as children, older adults and people with complex or high-risk medical conditions. Learn how to prescribe scheduled medicines, perform minor surgical procedures, refer for diagnostic imaging, and rehabilitate complex foot and ankle conditions.
PREREQUISITES	Units 3 and 4: a study score of at least 30 in English (EAL) or at least 25 in English other than EAL. Units 3 and 4: a study score of at least 25 in one of Biology, Chemistry, Health and Human Development, Physical Education, Physics, Psychology or any Mathematics.
INTAKE	Semester 1
DURATION	4 years
CAREER PATHS	<ul style="list-style-type: none"> - Private practice - Sports podiatry - Athlete wellbeing and welfare coordinator - Public health podiatry - Footwear and medical devices industry - Clinical and lab-based research

	MEL
ATAR	71.65
ASPIRE ATAR	55.00

BACHELOR OF PROSTHETICS AND ORTHOTICS (HONOURS) [©]

OVERVIEW	Make a real impact in treating the physical and functional limitations of others. Explore topics such as anatomy, physiology, biomechanics, and prosthetic and orthotic prescription, design and fabrication. You'll hone your skills through clinical teaching at our purpose-built onsite clinic, then take what you've learned into the real world with clinical placements at external prosthetic and orthotic facilities and industry partners. Choose from two minor options – an industry minor or a research minor – and graduate with the skills you need to become a qualified prosthetist and orthotist.
PREREQUISITES	Units 3 and 4: a study score of at least 30 in English (EAL) or at least 25 in English other than EAL.
INTAKE	Semester 1
DURATION	4 years
CAREER PATHS	<ul style="list-style-type: none"> - Public health - Private practice - Research

	MEL
ATAR	70.15
ASPIRE ATAR	65.00

BACHELOR OF PSYCHOLOGICAL SCIENCE ^{F © ①}

OVERVIEW	La Trobe's Bachelor of Psychological Science prepares you for a career as a professional psychologist, or in a psychology-related field across industries from human services to marketing. You'll develop strong analytical, research and communication skills by studying foundational subjects that include clinical and health psychology, developmental and social psychology, psychological assessment, intervention and research. Explore elective subjects with a choice of minor sequences in human relationships and neuroscience. This course is accredited by the Australian Psychology Accreditation Council (APAC).
PREREQUISITES	Units 3 and 4: a study score of at least 25 in English (EAL) or at least 20 in English other than EAL.
INTAKE	Semester 1 & 2
DURATION	3 years
CAREER PATHS	<ul style="list-style-type: none"> - Clinical psychologist* - Public health worker - Rehabilitation worker - Youth worker

	MEL	BEN	A-W	ONL
ATAR	55.55	59.90	64.30	NP
ASPIRE ATAR	50.00	50.00	50.00	50.00

* Requires completion of further psychology education.

BACHELOR OF PSYCHOLOGY (HONOURS) [©]

OVERVIEW	Become a professional psychologist, build a career in a psychology related field or pursue research. You'll develop strong analytical, research and communication skills, studying foundational subjects that include clinical and health psychology, developmental and social psychology, psychological assessment, intervention and research. You can also complement your degree with legal studies, business, management, marketing, sociology, science, genetics, language, and more. You'll also have the option to take a subject on autism-spectrum disorders taught by specialists from the Olga Tennison Autism Research Centre. This course is accredited by the Australian Psychology Accreditation Council (APAC).
PREREQUISITES	Units 3 and 4: a study score of at least 25 in English (EAL) or at least 20 in English other than EAL.
INTAKE	Semester 1
DURATION	4 years
CAREER PATHS	<ul style="list-style-type: none"> - Clinical psychologist* - Counsellor - Rehabilitation worker - Youth worker - Human resources officer

	MEL	BEN	A-W	ONL
ATAR	80.15	NP	NP	80.95
ASPIRE ATAR	65.00	65.00	65.00	65.00

* Requires completion of further psychology education.

BACHELOR OF SOCIAL WORK (HONOURS) ^{F © ①}

OVERVIEW	Get the clinical knowledge and hands-on skills to make a difference by helping others to thrive. You'll learn from world-renowned academics about promoting human rights and the importance of social justice. Our diverse range of subjects provide a strong foundation in psychology, sociology, human rights, social justice and relationship skills. You'll also gain real-world experience in social work through placements in hospitals and leading health and welfare organisations in Victoria and beyond.
PREREQUISITES	Units 3 and 4: a study score of at least 30 in English (EAL) or at least 25 in English other than EAL.
INTAKE	Semester 1
DURATION	4 years
CAREER PATHS	<ul style="list-style-type: none"> - Community health centres - Hospitals - Government departments - Non-government agencies - Mental health and disability services

	MEL	BEN	A-W	MIL	SHP
ATAR	55.35	NP	NP	NP	NP
ASPIRE ATAR	50.00	50.00	50.00	50.00	50.00

PLEASE SEE WEBSITE FOR DETAILS

^F First Nations Australian entry | [©] Aspire Community Impact | [©] Aspire Everyday Impact | ^① Aspire Academic Impact | **NA** ATAR not applicable | **NP** ATAR not published | **RE** Regional entry | **R** Regional Benefits Program

BACHELOR OF SPEECH PATHOLOGY (HONOURS)

OVERVIEW	Speech pathologists help to improve a person's abilities and quality of life. You'll develop an understanding of the anatomy behind speech and swallowing impairments and provide therapeutic treatment and management options. Build hands-on skills with approximately 1,000 hours of placement on campus and in clinics across Victoria. You'll also learn how to improve speech pathology services and policies by tackling a fourth-year industry project or research thesis.
PREREQUISITES	Units 3 and 4: a study score of at least 30 in English (EAL) or at least 25 in English other than EAL. Units 3 and 4: a study score of at least 25 in one of Biology, Chemistry, any Mathematics, Physical Education, Physics or Health and Human Development.
INTAKE	Semester 1
DURATION	4 years
CAREER PATHS	<ul style="list-style-type: none"> - Hospitals and health centres - Teaching and consultancy - Disability and special needs

ATAR	89.85	81.65
ASPIRE ATAR	80.00	65.00

BACHELOR OF SPORT AND EXERCISE SCIENCE

OVERVIEW	Gain a detailed understanding of the science behind training, explore the strengths and limitations of the human body, and build strong foundations in exercise physiology, strength and conditioning, anatomy, biomechanics and motor learning. Get out of the classroom with access to our elite athlete performance space at Melbourne Campus that includes our AFL oval, FIFA-1 accredited synthetic soccer pitch and more. Build real-world experience and connections with a minimum 150 hours of industry placements with organisations like Carlton Football Club, Rugby Victoria and Bendigo Spirit. Graduate ready to help people reach peak performance, and improve their health and wellbeing. This course is accredited by Exercise and Sports Science Australia (ESSA) and eligible graduates may apply for professional membership. With postgraduate study options in sport analytics, physiotherapy practice and more, you can specialise further.
PREREQUISITES	Units 3 and 4: a study score of at least 25 in English (EAL) or at least 20 in English other than EAL. Units 3 and 4: a study score of at least 20 in one of Health and Human Development, Physical Education, any Mathematics (General Mathematics, Mathematical Methods, Specialist Mathematics, Further Mathematics), or in one of Biology, Chemistry, Physics, or Psychology.
INTAKE	Semester 1
DURATION	3 years
CAREER PATHS	<ul style="list-style-type: none"> - Sport scientist - Health and wellness officer - Personal trainer - Injury prevention coach - Rehabilitation coach

ATAR	65.45	61.80
ASPIRE ATAR	50.00	50.00



BACHELOR OF SPORT AND RECREATION MANAGEMENT

OVERVIEW	Develop the skills to manage, lead and deliver sport and recreation programs across professional, community, for-profit and non-profit sectors. Build knowledge in sport and recreation policy, planning, needs assessment, evaluation, service delivery, community engagement and working with volunteers. Work-integrated learning is central, with industry placements across leading sport and recreation organisations, community agencies, and local and state government partners. La Trobe's strong industry partnerships provide valuable opportunities for practical experience, collaboration and career development – ensuring you graduate prepared to excel in a rapidly evolving and increasingly professionalised sport and recreation industry.
PREREQUISITES	Units 3 & 4: a study score of at least 25 in English (EAL) or at least 20 in English other than EAL.
INTAKE	Semester 1
DURATION	3 years
CAREER PATHS	<ul style="list-style-type: none"> - Community sport coordinator - Sport development officer - Event manager - Recreation officer - Partnerships and sponsorship coordinator



ATAR	55.00
ASPIRE ATAR	50.00

BACHELOR OF ARTS/BACHELOR OF HEALTH SCIENCES

OVERVIEW	In this interdisciplinary double degree, you'll examine the way that social, environmental and political structures affect the health of individuals, families and communities at local, national and international levels. Simultaneously, you'll explore your interests and pursue your passion, with a diverse range of arts and health sciences majors, minors and electives. Depending on your health sciences major, you'll graduate with a pathway into postgraduate health degrees, including audiology, physiotherapy and speech pathology, while the arts component provides opportunities for further study in the humanities and social sciences.
PREREQUISITES	Units 3 & 4: a study score of at least 25 in English (EAL) or at least 20 in English other than EAL.
INTAKE	 Semester 1 & 2  Semester 1
DURATION	4 years
MAJORS	<p>MELBOURNE: Aboriginal studies, Allied health, Anthropology, Archaeological and heritage studies, Asian studies, Chinese studies, Classics and ancient history, Creative and professional writing, Crime, justice and legal studies, Digital health, Digital media, English, Environmental health, Environmental humanities, Ethics and social justice, Food and nutrition, French studies, Gender, sexuality and diversity studies, Greek studies, Health promotion, Health, wellbeing and performance, Hindi studies, History, International studies, Italian studies, Japanese studies, Linguistics, Philosophy, Politics, Psychological science, Public health, Rehabilitation counselling, Sociology, Spanish studies, Sustainability and development, Visual cultures</p> <p>ONLINE: Anthropology, Archaeological and heritage studies, Asian studies, Creative and professional writing, Crime, justice and legal studies, Digital health, Digital media, English, Environmental health, Ethics and social justice, Health promotion, Health, wellbeing and performance, Hindi studies, History, International studies, Linguistics, Philosophy, Politics, Psychological science, Public health, Rehabilitation counselling, Sociology, Sustainability and development, Visual cultures</p>
CAREER PATHS	<ul style="list-style-type: none"> - Public health manager - Policy analyst - Communications advisor - Health promotion coordinator - Rehabilitation counsellor

ATAR	65.55	NP
ASPIRE ATAR	50.00	50.00

PLEASE SEE WEBSITE FOR DETAILS

 First Nations Australian entry |  Regional entry |  Regional Benefits Program



BACHELOR OF BUSINESS/BACHELOR OF PSYCHOLOGICAL SCIENCE ONL

OVERVIEW	Build valuable business and commerce skills and develop an in-depth knowledge of human behaviour. Through your business studies, you'll prepare to become an agile and innovative business leader. Build expertise for the digital age, including in data analysis, market research and business planning. As you study psychology, you'll develop the skills to evaluate people's psychological states, support them to cope with disorders and understand how environmental factors shape our psychology.
PREREQUISITES	Units 3 and 4: a study score of at least 25 in English (EAL) or at least 20 in English other than EAL.
INTAKE	Semester 1
DURATION	4 years
MAJORS	Agribusiness, Digital business, Management, Marketing
CAREER PATHS	<ul style="list-style-type: none"> - Organisational development specialist - Psychologist* - Economic analyst - Management consultant - Market researcher

ATAR	62.15
ASPIRE ATAR	50.00

* Requires completion of further psychology education.

BACHELOR OF COMMERCE/BACHELOR OF BIOMEDICINE MEL

OVERVIEW	Learn how to navigate rapidly evolving environments in biotechnology, health, commercial practice and public policy. Co-designed with industry leaders, our double degree gives you a multidisciplinary set of skills and knowledge sought-after by employers and policymakers. Build fundamental knowledge in chemistry, bioscience and health, while gaining the skills to solve complex problems by merging technical know-how and strategic analysis with an in-depth knowledge of innovations in the medical field. Gain real-world experience through industry placements, work-integrated learning projects and overseas student exchange opportunities.
PREREQUISITES	Units 3 and 4: a study score of at least 25 in English (EAL) or at least 20 in English other than EAL.
INTAKE	Semester 1 & 2
DURATION	4.5 years
MAJORS	Accounting, Business analytics, Cancer, heart and brain diseases, Economics, Finance, Immunology and infectious disease, Management, Marketing, Molecular and cellular biochemistry, Physiology and pharmacology
CAREER PATHS	<ul style="list-style-type: none"> - Biomedical researcher - Biotechnologist - Accountant - Financial advisor - Project manager

ATAR	84.75
ASPIRE ATAR	65.00

BACHELOR OF COMMERCE/BACHELOR OF HEALTH SCIENCES MEL

OVERVIEW	Develop valuable skills in business and health while remaining grounded in an entrepreneurial core. Analyse the complex challenges confronting business and society, as well as emerging developments in the field of health sciences. Develop cultural intelligence, leadership skills, stakeholder negotiation and communication skills that help you to thrive in any work environment. Choose from a range of majors and minors to build a unique set of multidisciplinary skills. Gain real-world experience by learning from industry experts, industry placements, work-integrated learning projects and overseas exchange opportunities.
PREREQUISITES	Units 3 and 4: a study score of at least 25 in English (EAL) or at least 20 in English other than EAL.
INTAKE	Semester 1 & 2
DURATION	4 years
MAJORS	Accounting, Allied health, Business analytics, Digital health, Economics, Environmental health, Finance, Food and nutrition, Health promotion, Health, wellbeing and performance, Management, Marketing, Psychological science, Public health, Rehabilitation counselling
CAREER PATHS	<ul style="list-style-type: none"> - Public health manager - Economist - Health promotion advisor - Financial advisor - Sustainability specialist

ATAR	80.40
ASPIRE ATAR	65.00

BACHELOR OF COMMERCE/BACHELOR OF PSYCHOLOGICAL SCIENCE MEL

OVERVIEW	Co-designed with industry leaders, La Trobe's accredited Bachelor of Commerce/Bachelor of Psychological Science gives you commercial knowledge and skills, as well as a deep understanding of the human mind. Understand what drives human choices and how businesses can meet consumer needs. Establish a grounding in psychology, exploring theories on individuals, groups and whole societies. Learn how experiences and incentives impact individual and group behaviour and how this knowledge can be applied in business to create better systems and solutions for people and the planet.
PREREQUISITES	Units 3 and 4: a study score of at least 25 in English (EAL) or at least 20 in English other than EAL.
INTAKE	Semester 1 & 2
DURATION	4 years
MAJORS	Accounting, Business analytics, Economics, Finance, Management, Marketing
CAREER PATHS	<ul style="list-style-type: none"> - Public health worker - Management consultant - Market researcher - Policy advisor - Psychologist*

ATAR	80.90
ASPIRE ATAR	65.00

* Requires completion of further psychology education.

PLEASE SEE WEBSITE FOR DETAILS

First Nations Australian entry | Aspire Community Impact | Aspire Everyday Impact | Aspire Academic Impact | NA ATAR not applicable | NP ATAR not published | RE Regional entry | RB Regional Benefits Program

BACHELOR OF CRIMINOLOGY/BACHELOR OF PSYCHOLOGICAL SCIENCE [Ⓢ] [Ⓡ]

OVERVIEW	Explore the connections between crime and the human mind and its effects on behaviour. Understand crime in its social context and how individual and social responses are shaped by gender, race, power and money. Establish a grounding in psychology, exploring theories on individuals, groups and whole societies. Learn how experiences and incentives impact behaviour and how this knowledge can be applied to key issues in criminal justice. Graduate ready to apply for membership of the Australian Psychological Society and the prerequisites to apply for Honours in psychology, with potential to pursue postgraduate study and registration as a psychologist.
PREREQUISITES	Units 3 and 4: a study score of at least 25 in English (EAL) or at least 20 in English other than EAL.
INTAKE	^{MEL} ^{ONL} Semester 1 & 2 ^{BEN} Semester 1
DURATION	4 years
CAREER PATHS	<ul style="list-style-type: none"> - Criminologist - Corrections officer - Intelligence officer* - Forensic psychologist - Victim advocate

^{MEL} ^{BEN} ^{ONL}

ATAR	55.80	55.45	55.40
ASPIRE ATAR	50.00	50.00	50.00

* Requires completion of further psychology education.

BACHELOR OF CYBERSECURITY/BACHELOR OF PSYCHOLOGICAL SCIENCE [Ⓢ]

OVERVIEW	Build a career at the nexus of two rapidly evolving sciences and learn how to combat the constantly evolving threat of cybercrime. In this distinctive combination of study areas, you can build a career within the growing field of cybersecurity or pursue a career as a psychologist (after further postgraduate study). Explore the research methods used in contemporary psychological investigations, and understand human behaviour and explore the psychology of hackers, victims and defenders. Learn from experts in world-class facilities, including our Cyber Security Research Hub – one of the largest cybersecurity research hubs in Victoria.
PREREQUISITES	Units 3 and 4: a study score of at least 25 in English (EAL) or at least 20 in English other than EAL.
INTAKE	Semester 1
DURATION	4 years
CAREER PATHS	<ul style="list-style-type: none"> - Ethical hacker - Psychologist* - Security architect - Cybersecurity policy advisor - Management consultant

^{MEL}

ATAR	NP
ASPIRE ATAR	50.00

* Requires completion of further psychology education.

BACHELOR OF LAWS (HONOURS)/BACHELOR OF BIOMEDICINE [Ⓢ]

OVERVIEW	Get the skills, knowledge and industry experience you need to launch a legal career in the world of scientific advancement. In this double degree, you'll develop a solid legal grounding in the fundamentals of legal practice, and hone your skillset in advocacy, negotiation and dispute resolution through intellectual and skills-based training. At the same time, you'll explore how the body works as you build essential knowledge in chemistry, bioscience and health.
PREREQUISITES	Units 3 and 4: a study score of at least 30 in English (EAL) or at least 25 in English other than EAL.
INTAKE	Semester 1
DURATION	5.5 years
MAJORS	Cancer, heart and brain diseases, Immunology and infectious disease, Molecular and cellular biochemistry, Physiology and pharmacology
CAREER PATHS	<ul style="list-style-type: none"> - Health or medical lawyer - Compliance manager - Intellectual property lawyer - Research and development manager - Public health policymaker

^{MEL}

ATAR	92.45
ASPIRE ATAR	78.00

BACHELOR OF LAWS (HONOURS)/BACHELOR OF PSYCHOLOGICAL SCIENCE [Ⓢ] [Ⓡ]

OVERVIEW	Build an adaptable skillset that combines skills-based legal training with expertise in psychological science. You'll build legal expertise in key areas of law and develop skills that are highly valued by all employers, like advocacy, negotiation, and dispute resolution. In this accredited psychological science degree, you'll enjoy the full benefits of having access to academics who are experts in their fields. Explore the environmental factors that affect our mental health and understand how community members cope with mental and physical disorders.
PREREQUISITES	Units 3 and 4: a study score of at least 30 in English (EAL) or at least 25 in English other than EAL.
INTAKE	^{MEL} Semester 1 & 2 ^{BEN} Semester 1
DURATION	5 years
CAREER PATHS	<ul style="list-style-type: none"> - Forensic psychologist* - Mediator - Barrister or solicitor - Workplace relations advisor - Policy advisor

^{MEL} ^{BEN}

ATAR	91.00	NP
ASPIRE ATAR	78.00	70.00

* Requires completion of further psychology education.

PLEASE SEE WEBSITE FOR DETAILS

[Ⓡ] First Nations Australian entry | [Ⓢ] Aspire Community Impact | [Ⓢ] Aspire Everyday Impact | [Ⓡ] Aspire Academic Impact | **NA** ATAR not applicable | **NP** ATAR not published | **RE** Regional entry | [Ⓡ] Regional Benefits Program



BACHELOR OF NURSING/BACHELOR OF MIDWIFERY ^F [©]

OVERVIEW	Learn from leading clinicians and academics and gain hands-on experience in our state-of-the-art simulation labs. Move into real-world healthcare environments with La Trobe's top-tier industry partners in your first year. Gain a rich understanding of the pregnancy journey, professional standards and models of care. Play an active role as the primary attendant in childbirth, including care in the first stages of labour and postnatal examination. Graduate ready to apply to become a registered midwife (RM) and a registered nurse (RN).
PREREQUISITES	Units 3 and 4: a study score of at least 30 in English (EAL) or at least 25 in English other than EAL.
INTAKE	Semester 1
DURATION	4 years
CAREER PATHS	<ul style="list-style-type: none"> - Hospitals, clinics and birth centres - Private midwife - Schools and universities - Community health centres - Government agencies

	MEL BEN RE*
ATAR	80.95 81.25 73.75
ASPIRE ATAR	70.00 60.00 50.00

* Only regional students are eligible to apply for regional entry.

BACHELOR OF NURSING/BACHELOR OF PSYCHOLOGICAL SCIENCE [©]

OVERVIEW	Get the clinical understanding and confidence to care for people of all ages while building valuable expertise in psychological science. Learn from leading clinicians and academics and gain hands-on experience in our state-of-the-art simulation labs. Move into real-world healthcare environments with La Trobe's top-tier industry partners in your first year. Develop valuable expertise in cognitive, developmental, social, clinical and health psychology. Graduate ready to apply to become a registered nurse (RN) and take your first steps toward a qualification as a registered psychologist.*
PREREQUISITES	Units 3 and 4: a study score of at least 30 in English (EAL) or at least 25 in English other than EAL.
INTAKE	Semester 1
DURATION	4 years
CAREER PATHS	<ul style="list-style-type: none"> - Hospitals and specialist clinics - Homes, hospices and aged care - Schools and universities - Community health centres - Government agencies

	MEL BEN A-W
ATAR	70.45 NP NP
ASPIRE ATAR	55.00 55.00 55.00

* Requires completion of further psychology education.

DIPLOMA IN HEALTH SCIENCES ^E ^①

OVERVIEW	Turn your passion into a profession with a pathway into La Trobe's Bachelor of Health Sciences or a range of entry-level healthcare roles. Build your health sciences knowledge and get the full university experience by studying core subjects alongside Bachelor's degree students. Learn the fundamentals, including human structure and function, concepts in contemporary health and wellbeing, and how to use data and statistics in health. Tailor your study to your career or future study plans by choosing from a range of specialist health sciences streams, including health promotion, public health, environmental health, digital health and more.
PREREQUISITES	Units 3 and 4: a study score of at least 25 in English (EAL) or at least 20 in English other than EAL.
INTAKE	Semester 1
DURATION	1 year
CAREER PATHS	<ul style="list-style-type: none"> - Medical assistant - Pharmacy assistant - Aged care program assistant - Health policy assistant - Health promotion assistant

	MEL ONL
ATAR	NA NA

DIPLOMA OF RURAL HEALTH ^E ^①

OVERVIEW	La Trobe's Diploma of Rural Health is your pathway to one of our health degrees and a qualification to step into entry-level roles. You can earn up to one year's worth of course credit (also called advanced standing) for the subjects you study - meaning you can jump directly into the second year of a Bachelor of Health Sciences or Bachelor of Nursing. You'll also be connected to a Senior Support Adviser and peer mentors who'll support you along the way.
PREREQUISITES	Units 3 and 4: a study score of at least 20 in English (EAL) or at least 20 in English other than EAL.
INTAKE	Semester 1
DURATION	1 year
CAREER PATHS	Graduates of the Diploma of Rural Health can pursue entry-level roles across health services and organisations.

	BEN A-W MIL SHP
ATAR	NA NA NA NA

DIPLOMA OF SPORT COACHING AND DEVELOPMENT ^E ^①

OVERVIEW	In this diploma, you'll spend your time between La Trobe University's Melbourne (Bundoora) Campus, and the Carlton College of Sport at Ikon Park, the home of the Carlton Football Club. You'll explore a wide range of topics, including sport coaching, exercise programming, sport and recreation program design, sports science, nutrition and development, professional communication and more. You'll get the best of both worlds through academic and practical learning, as you take what you've learned in the classroom out into the field, with access to elite athletes, club events and much more.
PREREQUISITES	Units 3 and 4: a study score of at least 25 in English (EAL) or at least 20 in English other than EAL.
INTAKE	Semester 1
DURATION	1 year
CAREER PATHS	<ul style="list-style-type: none"> - Sport academies - Schools - Sport-focused businesses - Sport governing bodies (all levels*)

	CAR
ATAR	NA

* Local, state and national governing bodies for sport require additional entry requirements for coaching accreditation at all levels.

CAR Carlton College of Sport. See website for details.

PLEASE SEE WEBSITE FOR DETAILS

^F First Nations Australian entry | [©] Aspire Community Impact | ^E Aspire Everyday Impact | ^① Aspire Academic Impact | **NA** ATAR not applicable | **NP** ATAR not published | **RE** Regional entry | ^R Regional Benefits Program

UNDERGRADUATE CERTIFICATE IN FOOD AND NUTRITION

ONL

OVERVIEW	Gain the foundational knowledge to upskill or pursue a career in health, fitness or wellness. Build a solid, evidence-based understanding of nutrition and the skills to understand health science, assess nutrition information, and address sociocultural influences on food and wellbeing. Make study work around employment and life commitments with flexible online learning and full- or part-time study and the option to pathway into the Bachelor of Food and Nutrition, where you'll continue your studies in topics such as environmental sustainability of our food system, food product development, culture and food, sustainable diets, and nutrition and disease.
PREREQUISITES	Completion of an Australian Foundation Studies program. Successful completion of Australian Senior Secondary Certificate of Education.
INTAKE	Semester 1
DURATION	6 months

ATAR

NA

UNDERGRADUATE CERTIFICATE IN HEALTH SCIENCES

ONL

OVERVIEW	Gain the foundational knowledge to upskill or pursue a new career in health sciences with flexible online learning. Our health sciences curriculum is uniquely aligned with industry trends, focusing on real-world and data-driven health solutions aligned to today's evolving health sector. You'll gain the confidence to pathway into the Diploma of Health Sciences or Bachelor of Health Sciences, where you'll continue your studies and choose to major in areas like public health, health promotion, rehabilitation counselling, health wellbeing and performance, environmental health, digital health, or psychological science.
PREREQUISITES	Completed Year 12 in the current or previous 2 years. Successful completion of Australian Senior Secondary Certificate of Education OR Completion of an Australian Foundation Studies program.
INTAKE	Semester 1 & 2
DURATION	1 year part-time

ATAR

NA

UNDERGRADUATE CERTIFICATE IN PSYCHOLOGICAL SCIENCE

ONL

OVERVIEW	Gain the foundational knowledge in psychological science and the interdisciplinary skills to upskill, prepare you for future studies, or transition into a career within the field of psychological science. You'll explore foundational subjects that will introduce you to core areas of psychology, including brain and mind, people and culture. Make study work around employment and life commitments with part-time online learning, and the option to further your studies in the Bachelor of Psychological Science.
PREREQUISITES	Completed Year 12 in the current or previous 2 years. Successful completion of Australian Senior Secondary Certificate of Education OR completion of an Australian Foundation Studies program.
INTAKE	Semester 1 & 2
DURATION	1 year part-time

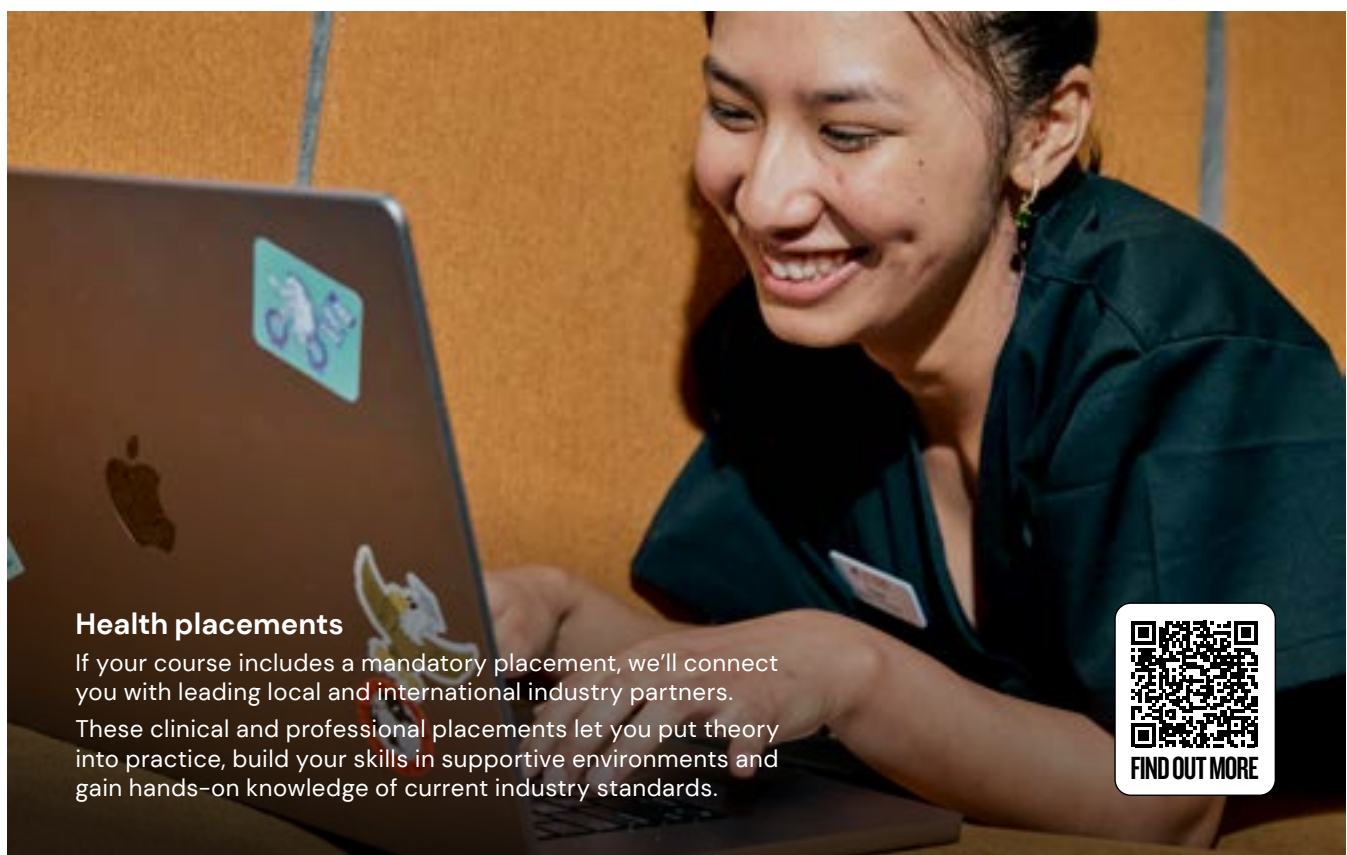
ATAR

NA

The La Trobe website includes complete entry requirements, including extra requirements, information on subject adjustments and requirements for non-Year 12 students. The availability of displayed majors may differ depending on campus and semester intake. ATAR data within this publication is based on the lowest selection rank (ATAR plus any adjustment factors) and is correct as of VTAC's January 2026 offer round. For more information, see latrobe.edu.au/courses. Aspire ATARs published are based on entry for Semester 1, 2026 and subject to change. For more information on the Aspire Early Offer Program and how to access the Aspire ATAR, see latrobe.edu.au/aspire. Some courses have alternative application options for regional and First Nations students – these courses are noted. For more information on how to apply, see the VTAC website.

PLEASE SEE WEBSITE FOR DETAILS

First Nations Australian entry | Aspire Community Impact | Aspire Everyday Impact | Aspire Academic Impact | **NA** ATAR not applicable | **NP** ATAR not published | Regional Benefits Program | **RE** Regional entry



Health placements

If your course includes a mandatory placement, we'll connect you with leading local and international industry partners. These clinical and professional placements let you put theory into practice, build your skills in supportive environments and gain hands-on knowledge of current industry standards.





SECURE YOUR SPOT ACROSS TWO COURSES

AT LA TROBE, WE'VE BUNDLED SOME OF OUR MOST POPULAR COURSES INTO PACKAGED OFFERS. ONCE YOU'VE RECEIVED AN OFFER INTO YOUR PREFERRED PACKAGE, A PLACE IN YOUR DREAM DEGREE IS LOCKED IN.

Undergraduate packaged offers

Start with a Diploma or Associate degree, then transition into the second or third year of your Bachelor's course.

Diploma in Health Sciences	> Bachelor of Health Sciences
Diploma of Rural Health	> Bachelor of Nursing (Graduate Entry Pathway)
Diploma of Science	> Bachelor of Science

Postgraduate packages

Secure a pathway from a Bachelor's degree into postgraduate study, such as a Master's degree.

Bachelor of Biomedical Science	> Master of Physiotherapy Practice
Bachelor of Biomedicine	> Master of Clinical Audiology > Master of Physiotherapy Practice
Bachelor of Food and Nutrition	> Master of Dietetics
Bachelor of Health Sciences	> Master of Clinical Audiology
Bachelor of Psychological Science	> Graduate Certificate in Family Therapy > Graduate Certificate in Marketing > Graduate Diploma in Rehabilitation Counselling > Master of Clinical Audiology > Master of Counselling, Rehabilitation and Mental Health
Bachelor of Sport and Exercise Science	> Master of Exercise Physiology > Master of Physiotherapy Practice > Master of Sport Analytics

Admission into the postgraduate component of the package offer is conditional on meeting the minimum selection and admission criteria for the postgraduate award. Admission into the Bachelor's component of the packaged offer is conditional on passing all Diploma subjects. See website for campus availability and full terms and conditions.

WAYS INTO YOUR DEGREE



Pathways

If you didn't get the ATAR you wanted, or you aren't ready to start a degree right away, a great option is to start a pathway course then transfer later, provided you meet the entry requirements.

Some of our pathway options¹ include:

- Studying a different Bachelor's degree with lower entry requirements then transferring.
- Studying a two-year Associate degree with lower entry requirements then transferring.
- Studying a one-year Diploma then using that credit to transfer into an eligible Bachelor's degree.
- Completing a Certificate or Diploma at TAFE or VET then transferring.
- Studying a Diploma or Certificate at La Trobe College and gaining second year entry into a Bachelor's degree without an ATAR.
- Studying a course package to secure a spot and gaining advanced standing into a Bachelor degree.

Entry programs and adjustments

Boost your application to La Trobe with programs and adjustments that can change your score or offer an alternative entry score.

- Achieve Plus, higher education studies
- Aspire Early Offer Program
- Elite Athlete ATAR adjustment
- Regional Benefits Program
- VTAC Access and Equity Adjustment (SEAS)

Tertiary Preparation Program (TPP)

Not a Year 12 student or don't have an ATAR? Our TPP unlocks access to our courses while helping you build skills for success at university. The TPP is a free, online course that fits around your commitments.

Undergraduate certificates

Kick off your uni study with our new undergraduate certificates in areas like IT and health – no ATAR required.



1. Eligibility for transfer will depend on successful completion of certain subjects, consult a course advisor for more information on your options. Credit transfer subject to conditions.

ASPIRE EARLY OFFER PROGRAM



With Aspire, you'll have the opportunity to get an early conditional offer for a wide range of our courses² across our campuses before finishing Year 12. We have three streams to choose from, so if you've given back to your community, done well in Year 11, or have a strong drive to make a future impact, you could secure a spot in your dream course before finishing Year 12. Applications open 1 April 2026 and close 4 September 2026.

You'll also gain access to study support like ATARNotes+ as well as access to apply for exclusive scholarships and more.

* Community Impact

Aspire Community Impact rewards Year 12 students for their volunteering or community contribution with an Aspire ATAR.

* Academic Impact

Aspire Academic Impact enables Year 12 students to leverage their Year 11 results to secure an early conditional offer into a range of undergraduate courses – no ATAR required.

* Everyday Impact

Aspire Everyday Impact gives Year 12 students with the drive to make an impact a direct pathway into undergraduate studies – no ATAR required.



² Some courses in the Aspire program are capped and remain competitive.

APPLYING TO STUDY AT LA TROBE



How to apply

Find your course: Browse by discipline at latrobe.edu.au/study or search by ATAR.

🔍 [La Trobe courses](#)

Use the ATAR calculator: If you're applying as a Year 12 student, use your real or estimated ATAR score to find courses that match your interest.

🔍 [La Trobe ATAR calculator](#)

Explore entry options: Use our ATAR adjustment calculator to estimate any boosts to your ATAR or explore entry and pathway options.

🔍 [Pathways & entry La Trobe](#)

Prepare to apply: Visit our Year 12 Hub to guide you through all the steps for making the right study choices.

🔍 [Choose La Trobe](#)

Your guide to preferences

Want to know how to submit your preferences? Prepare ahead with our guide to submitting your preferences.

🔍 [La Trobe VTAC applications](#)

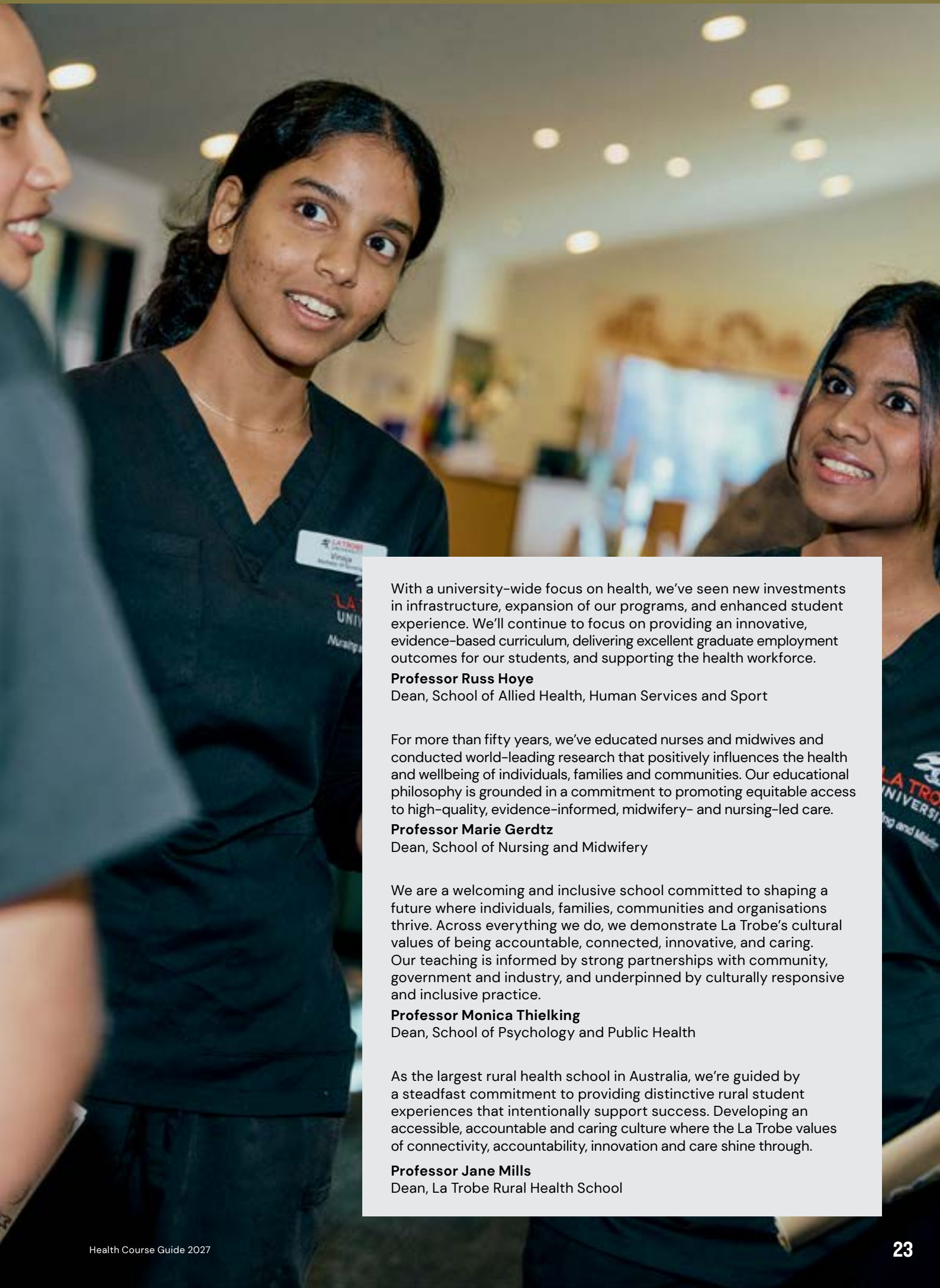
Not in Year 12?

For most of our courses, you can apply directly to La Trobe online. For select undergraduate courses, or if you're applying for multiple courses, you'll apply via the Victorian Tertiary Admissions Centre (VTAC) or the Universities Admissions Centre (UAC).

Scholarships

We offer a range of scholarships that reward your academic, sporting or leadership achievements, or provide support to students experiencing financial difficulties, personal hardships or who come from underrepresented backgrounds.

The information on this page is meant for domestic students only. You are considered a domestic student if you are an Australian or New Zealand citizen, Australian permanent resident, or permanent humanitarian visa holder. Information on how to apply as an international student can be found online at latrobe.edu.au/study/apply/international. VTAC typically opens for applications in August of each year.



With a university-wide focus on health, we've seen new investments in infrastructure, expansion of our programs, and enhanced student experience. We'll continue to focus on providing an innovative, evidence-based curriculum, delivering excellent graduate employment outcomes for our students, and supporting the health workforce.

Professor Russ Hoye

Dean, School of Allied Health, Human Services and Sport

For more than fifty years, we've educated nurses and midwives and conducted world-leading research that positively influences the health and wellbeing of individuals, families and communities. Our educational philosophy is grounded in a commitment to promoting equitable access to high-quality, evidence-informed, midwifery- and nursing-led care.

Professor Marie Gerdtz

Dean, School of Nursing and Midwifery

We are a welcoming and inclusive school committed to shaping a future where individuals, families, communities and organisations thrive. Across everything we do, we demonstrate La Trobe's cultural values of being accountable, connected, innovative, and caring. Our teaching is informed by strong partnerships with community, government and industry, and underpinned by culturally responsive and inclusive practice.

Professor Monica Thielking

Dean, School of Psychology and Public Health

As the largest rural health school in Australia, we're guided by a steadfast commitment to providing distinctive rural student experiences that intentionally support success. Developing an accessible, accountable and caring culture where the La Trobe values of connectivity, accountability, innovation and care shine through.

Professor Jane Mills

Dean, La Trobe Rural Health School

JOIN US AT OPEN DAY 2026

Explore your study options, chat with current students and teachers, tour our campuses, and discover what it's really like to study at La Trobe.

Melbourne (Bundoora)

Sunday 2 August

Shepparton

Sunday 9 August

Mildura

Wednesday 12 August

Albury-Wodonga

Sunday 16 August

Bendigo

Sunday 23 August

latrobe.edu.au/openday



TAKE THE NEXT STEP

Visit the Hub

choose.latrobe.edu.au

Live chat

latrobe.edu.au/chat

Call us

1300 135 045

Book a consult

consultation.latrobe.edu.au

Ask us a question

latrobe.edu.au/ask-us

STAY CONNECTED

Instagram

@latrobeuni

Facebook

La Trobe University

TikTok

@latrobeuni

X

@latrobe

LinkedIn

La Trobe University

latrobe.edu.au



LA TROBE
UNIVERSITY

Disclaimer: The information contained in this publication is indicative only. While every effort is made to provide full and accurate information at the time of publication, the University does not warrant the currency, accuracy or completeness of the contents. The University reserves the right to make changes without notice, at any time in its absolute discretion, including but not limited to varying admission or assessment requirements, or varying or discontinuing any course or subject. To the extent permitted by law, the University does not accept responsibility for any loss or damage occasioned by use of any of the information contained in this publication. For course information updates, please visit: latrobe.edu.au/courses

La Trobe University is a registered provider under the Commonwealth Register of Institutions and Courses for Overseas Students (CRICOS), La Trobe University CRICOS Provider Code Number 00115M. TEQSA PRV12132; Provider Category: Australian University.

Published by La Trobe University, May 2026 – DC42293.



ACKNOWLEDGEMENT OF COUNTRY

La Trobe University acknowledges our campuses are located on the lands of many Traditional Custodians in Victoria and New South Wales.

We recognise their ongoing connection to the land and value their unique contribution to the University and wider Australian society.

La Trobe University is committed to providing opportunities for Aboriginal and Torres Strait Islander people, both as individuals and communities, through teaching, learning, research and partnerships across all our campuses.

Wurundjeri

Melbourne (Bundoora & City)

Dja Dja Wurrung

Bendigo

Yorta Yorta

Shepparton

Dhudhuroa/Waywurru

Albury-Wodonga

Latji Latji

Mildura

Gadigal

Sydney