



CAREER NETWORK UPDATE

OVERVIEW

- Health education investment at La Trobe
- Access and Equity Schools
- Aspire Early Offer Program
- September Campus Talk and Tours
- VTAC Equity schemes (SEAS) and Scholarships
- Access and Equity Schools Program
- La Trobe Elite Athlete Program (LEAP)
- Course updates and features
- Bachelor of Food and Nutrition/Master of Dietetics (Packaged course)
- Bachelor of Education
- Bachelor of Arts
- Bachelor of Biomedical Science (Medical)
- Double major or double degree
- Undergraduate to postgraduate packaged offers
- September Webinar Series

FUNDING FUELS NEW LAUNCHPAD FOR STARTUPS

La Trobe University has secured \$400,000 from LaunchVic to establish LaunchPad, a 12-week Pre-Accelerator Program supporting early-stage entrepreneurs in transforming technology-led startup ideas into scalable businesses.

Running twice yearly from 2026–2027 following a September 2024 pilot, the program combines an eight-week course partnered with Startmate (Australia's largest accelerator) and a four-week extension led by La Trobe experts, focusing on business model testing and venture launch.

La Trobe Vice-Chancellor Professor Theo Farrell emphasised universities' critical role

in nurturing entrepreneurship, stating the program will equip founders with essential tools, networks, and confidence for real-world success.

LaunchVic CEO Dr Kate Cornick highlighted Victoria's startup leadership, hosting 50% of Australia's enterprise software and healthtech startups. With 180 university spinouts contributing \$2.9 billion in value, LaunchPad will be vital to Victoria's rapidly expanding startup ecosystem.

The initiative builds on La Trobe's decade-long success in delivering innovation programs locally and internationally.

[Find out more](#)

UPCOMING EVENTS

Bundoora September Campus Talk and Tours

23 & 24 September 2025

[Register now](#)

Undergraduate Webinar Series

1 – 25 September 2025

[Register now](#)

Change of Preference Fest

11 December 2025

[Registrations open](#)

[Learn more](#)





LA TROBE UNIVERSITY LAUNCHES AUSTRALIA'S LARGEST HEALTH EDUCATION INVESTMENT

La Trobe University is undertaking the sector's largest-ever investment to address Australia's critical healthcare staffing crisis, with nursing alone facing a shortage of approximately 100,000 workers by 2025.

The Health Innovation Project will deliver an additional 4,000 healthcare professionals annually by 2030, increasing total graduates to more than 12,000 per year across nursing, psychology, dental, and allied health disciplines.

Key infrastructure projects:

- New nursing and midwifery simulation facilities across all campuses (2026-2027)
- Rural dentistry and oral health clinical school in Bendigo (late 2025)
- Multi-disciplinary allied health and psychology teaching building at Bundoora (February 2026)
- Enhanced clinical education unit with specialised student support roles

This strategic investment aims to position La Trobe as Australia's largest tertiary health education provider, particularly targeting rural and regional workforce shortages. The initiative includes course enhancements, expanded clinical

placements, and research innovations, including Australia's first Care Economy Research Institute.

The comprehensive strategy addresses both immediate workforce needs and long-term health innovation through integrated teaching, research, and infrastructure development.

[Find out more](#)

[Learn more](#)



A young woman with brown hair tied back, wearing large white headphones and a light grey hoodie with 'LA TROBE' printed on it, is sitting at a wooden desk. She is looking down at a laptop. On the desk, there is a green water bottle, a smartphone, and some papers. In the background, there is a window with a view of a building and a red wall on the left.

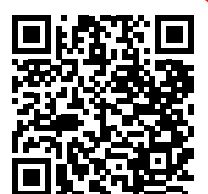
SEPTEMBER WEBINAR SERIES

FIND OUT EVERYTHING YOU NEED TO KNOW ABOUT STUDY AT LA TROBE WITH OUR RANGE OF LIVE AND ON-DEMAND COURSE SPECIFIC WEBINARS.

Find out everything you need to know about study at La Trobe with our range of live and on-demand webinars. Webinars will be live from 5 pm – 6 pm throughout September, click on the study areas below to register.

Sport & Exercise Science	Tuesday 2 September
Business/Commerce	Monday 8 September
Education	Tuesday 9 September
Arts	Wednesday 10 September
Health Sciences	Thursday 11 September
Psychological Sciences	Monday 15 September
Cybersecurity	Tuesday 16 September
Biomedical Science	Wednesday 17 September
Nursing	Thursday 18 September
Law	Monday 22 September
Food & Nutrition	Tuesday 23 September
Engineering	Thursday 25 September

Explore webinars





ASPIRE APPLICATIONS CLOSING SOON!

At La Trobe, there's more than one way into uni. The Aspire Early Offer Program gives secondary school students the option to secure an early conditional offer to La Trobe before finishing Year 12.

If students have given back to their community, did well in Year 11, or have a strong drive to make a future impact, students can apply for an early offer in October.

Aspire course list

What courses can students apply for under each Aspire stream? Download our Aspire course list now.

[Download now](#)

Aspire webinars

If your students need extra support, they can watch our on-demand Aspire webinar for application tips, pathways, and more. Share the registration link with them today.

[Register now](#)

Aspire Application Update

We have extended the closing date for the Academic Impact stream to Tuesday 30 September, to allow students more time to complete their applications. The Community and Everyday Impact stream closed on Friday 5 September.

Need more information?

Give us a call on 1300 135 045

Send us an email: study@latrobe.edu.au

[Learn more](#)



CAMPUS TOURS



CAMPUS TALK AND TOURS

GIVE YOUR STUDENTS A PERSONAL CAMPUS EXPERIENCE

Your students are invited to attend La Trobe's September Talk and Tours at our Melbourne Campus.

For students who missed our Open Day, or are just keen to visit the Melbourne Campus, September Talk and Tours lets them explore our facilities and teaching spaces, plus an option to check out our on-campus accommodation.

Tours depart at 10am and 12pm, running for approximately 45 minutes. Afterwards, take an accommodation tour or sit down with a course advisor to chat about study options.

Make sure students book a spot to receive a gift pack upon arrival.

Register now



Tuesday 23 September
and
Wednesday 24 September

10 am and 12pm each day

Jenny Graves Building,
La Trobe University
Melbourne (Bundoora
Campus)

VTAC EQUITY SCHEMES (SEAS) AND SCHOLARSHIPS

La Trobe's VTAC equity schemes provide special consideration for students who have experienced educational disadvantage, offering ATAR adjustments to improve university access.

Four key categories:

1. Personal information and location: – geographical disadvantage considerations
2. Disadvantaged financial background: – economic hardship support
3. Disability or medical condition: – health-related barriers
4. Difficult circumstances: – various challenging situations

How to apply: Complete the equity scheme application as part of your VTAC, UAC, or Direct Entry online application. Some categories require impact statements and verification from responsible persons.

Adjustment factors:

- **Standard maximum:** 20 aggregate adjustment points
- **Special courses with reduced maximums:**
 - Bachelor of Physiotherapy (Honours): 10 points maximum
 - Bachelor of Biomedical Science (Medical): 10 points maximum
 - Bachelor of Dental Science (Honours): 10 points maximum



Regional Entry Bonus (Dental Science):

Students in remote areas receive additional ATAR points: RA zone 2-3 (10 points), RA zone 4 (12.5 points), RA zone 5 (15 points).

These schemes ensure fair access to higher education regardless of background circumstances, helping level the playing field for disadvantaged students.

Find out more

ACCESS AND EQUITY SCHOOLS PROGRAM

La Trobe University believes higher education should be accessible to everyone. Our Access and Equity Schools Program provides ATAR adjustment factors to Year 12 students attending identified under-represented schools, helping level the playing field for university entry.

Program benefits:

- ATAR adjustment factors added automatically for eligible students
- Can be combined with other programs like VTAC equity schemes (SEAS) and rural/regional access schemes
- Annual review ensures program remains current and equitable

School eligibility criteria:

Schools are selected using multiple disadvantage indicators.

- **Index of Community Socio-Education Disadvantage (ICSEA)** scores
- **Index of Relative Socio-Economic Disadvantage (IRSD)** scores
- **Geographic location** including regional and remote areas
- **Historical higher education enrolment** patterns at La Trobe



Schools included in the program are reviewed each year in accordance with the criteria to ensure the program remains equitable.

Where a school has multiple campuses, the main campus is listed based on the ACARA schools profile data.

Find out more

Learn more





LA TROBE ELITE ATHLETE PROGRAM (LEAP) - EXCELLENCE IN SPORT AND STUDY

La Trobe University is a proud member of the Elite Athlete Friendly University (EAFU) Network, established by Sport Australia to identify, promote, and support elite athletes' unique educational needs.

The La Trobe Elite Athlete Program (LEAP) provides comprehensive assistance to help student-athletes successfully balance their academic and sporting pursuits at university level.

This comprehensive support system ensures elite athletes can pursue academic excellence while maintaining their competitive sporting careers, demonstrating La Trobe's commitment to supporting high-performance student-athletes across all disciplines.

Elite Athlete Support:

- Elite Athlete Travel Subsidy
- Equipment Subsidy
- University Representation Subsidy
- Dedicated academic case management
- Enrolment and timetabling assistance
- Flexible assessment arrangements
- Alternative exam scheduling
- Cross-institutional study support
- Course and credit transfer assistance

- Complimentary gym membership
- Strength and conditioning sessions
- Access to advanced sports dietician
- Subsidised on-campus podiatry services
- Subsidised massage therapy
- Official Elite Athlete Program apparel

The elite athlete adjustment factor is available to students applying for admission into a La Trobe undergraduate course via VTAC. Eligible elite athletes may have a five aggregate point adjustment factor applied towards their admission to La Trobe University. Applications are open from August to November annually.

[Find out more](#)

[Learn more](#)



YOUR SPORT CAREER BEGINS AT THE CARLTON COLLEGE OF SPORT

Are you passionate about sport? Dream of working behind the scenes at the highest level? Carlton College of Sport offers the opportunity to launch your career inside the heart of Carlton Football Club.



WHY CHOOSE CARLTON COLLEGE OF SPORT?

The Carlton Difference

Study alongside Carlton Football Club staff at IKON Park, the Home of CFC, and gain insights into what makes a professional club tick, from coaching and sports science to events and operations.

Elite Experience

Each course includes 100+ hours of practical placement in the sport industry, giving you real job experience and industry connections to start your career!

The La Trobe Difference

Delivered in partnership with La Trobe University, you'll earn a higher education qualification benefiting from a world-class academic foundation, nationally recognised qualification and a pathway to further study.

Career Outcomes

Graduates go on to work in sport management, events, performance analysis, exercise science throughout the sporting industry. Four graduate roles at the Carlton Football Club are also offered to every cohort at the end of the year.

COURSES ON OFFER:

Diploma of Sport Coaching and Development

Diploma of Elite Sport Business



Whether you're aiming to become a high-performance coach, work in media, or manage major sporting events, Carlton College of Sport is your springboard into the industry.

APPLICATIONS ARE NOW OPEN.

Visit carltoncollegeofsport.com.au to find out more.

COME AND VISIT US AT IKON PARK. BOOK AN OPEN DAY.
carltoncollegeofsport.com.au/apply/open-day

CHANGE OF PREFERENCE FEST

THURSDAY 11 DECEMBER

12PM - 3PM

SIMPSON LAWN, LA TROBE UNIVERSITY
MELBOURNE (BUNDOORA) CAMPUS



We know getting your ATAR results can be a big moment, so we're hosting the Change of Preference Fest to give you the support and advice you need, no matter what your results are.

Here's what you can expect:

- Course advice and pathways
- Campus tours
- Free food
- Prizes and giveaways



Register Now



COURSE FEATURE

BACHELOR OF BIOMEDICAL SCIENCE (MEDICAL)

ENTRY REQUIREMENTS

ATAR: 80.00

- 15 domestic places annually for rural/regional students (five+ years continuous or 10+ cumulative rural living)
- Rurality form with evidence required by 5pm AEDT, first Friday in November
- Selection via Multiple Mini-Interviews (MMIs) with La Trobe/University of Melbourne

PREREQUISITES

VCE: Units 3 and 4: a study score of at least 30 in English (EAL) or at least 25 in English other than EAL.

ABOUT

The Bachelor of Biomedical Science (Medical) provides a pathway into the graduate-entry Doctor of Medicine, offered by the University of Melbourne in Shepparton, for regional and rural students intending to practice medicine in a regional or rural location.

The program offers rural and regional students a guaranteed pathway to study medicine in a rural setting, with new \$2 million science laboratories and high-tech simulation spaces at Albury-Wodonga Campus providing authentic rural healthcare experiences.

In this pre-medicine course, students will combine fields of biology, pharmacology and medicine. They will learn about the human body, its structure and its functions. This includes understanding how disease manifests and how drug strategies are used to treat disease. Students will learn:

- Practical skills needed to explore the underlying molecular basis of acute and chronic illnesses
- How to apply biomedical research
- How to convey scientific and biomedical science information.

These studies will be held on rural campuses in Bendigo and Albury-Wodonga.

Subjects studied meet the admission criteria defined by the University of Melbourne for the Doctor of Medicine. The University of Melbourne also requires students to have a 70 WAM (weighted average mark) and a continued commitment to country living whilst completing the course to guarantee a place in the Doctor of Medicine course



STUDENT SPOTLIGHT

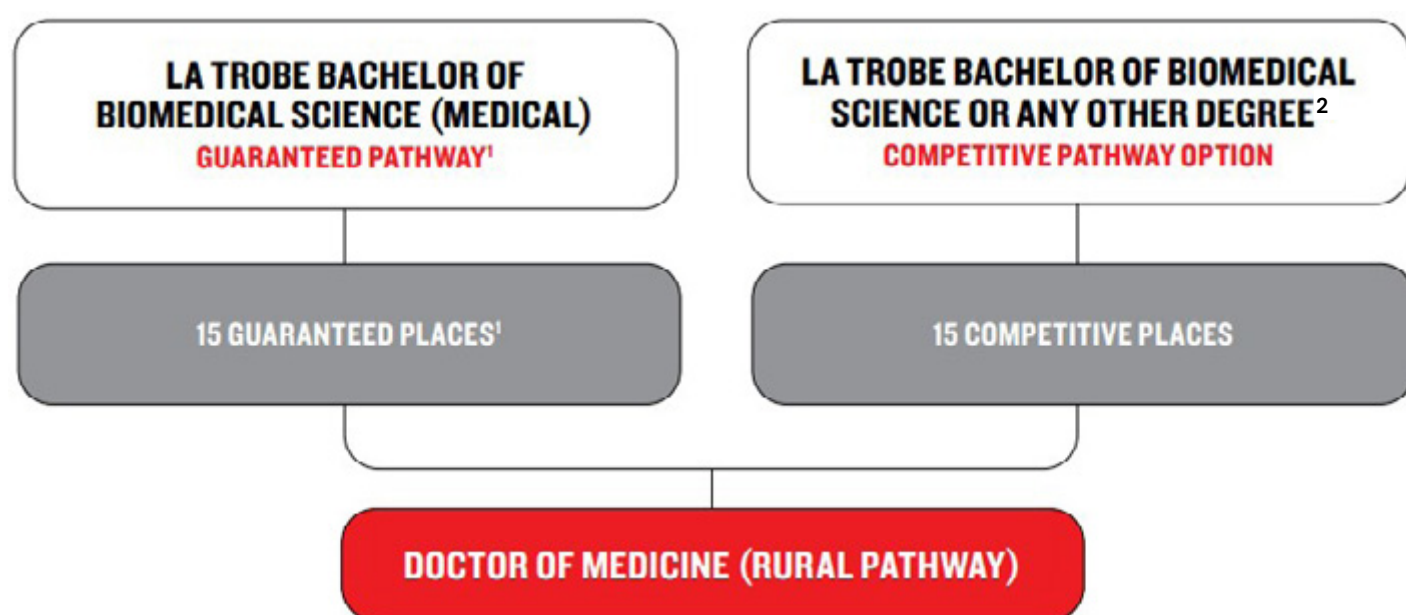
'This rural pathway fulfils my dream of serving communities that shaped me. With limited places available, it offers rural students the rare opportunity to pursue medicine locally. Training here means becoming a doctor for rural communities, advocating for healthcare equity while building lasting friendships in our close-knit, passionate cohort.'

Mohammad – Bachelor of Biomedical (Medical) Science



CAREER PATHWAYS

VICTORIA'S FIRST END-TO-END RURAL MEDICAL PATHWAY



1. The University of Melbourne requires students to have a WAM (weighted average mark) of 70 or higher and a continued commitment to regional living whilst completing the course in order to guarantee a place in the rural Doctor of Medicine (Rural Pathway) program in Shepparton.

2. Of any undergraduate program for any Australian university.





CAREER OUTCOMES

MEDICAL DOCTOR

Salary range: \$100,000 to \$120,000

5-year job growth trend: 10.2%

AU Job listings: 2,407

Course pathway: Bachelor of Biomedical Science (Medical)*

MEDICAL SCIENTIST

Salary range: \$85,000 to \$105,000

5-year job growth trend: 5.6%

AU Job listings: 1,569

Course pathway: Bachelor of Biomedical Science (Medical)

BIOMEDICAL ENGINEER

Salary range: \$80,000 to \$90,000

5-year job growth trend: 8.4%

AU Job listings: 945

Course pathway: Bachelor of Biomedical Science (Medical)

MEDICAL LABORATORY TECHNICIAN

Salary range: \$75,000 to \$85,000

5-year job growth trend: N/A

AU Job listings: 776

Course pathway: Bachelor of Biomedical Science (Medical)

HEALTH PRACTITIONER

Salary range: \$115,000 to \$135,000

5-year job growth trend: N/A

AU Job listings: 1,588

Course pathway: Bachelor of Biomedical Science (Medical)*

HEALTH PROMOTION OFFICER

Salary range: \$85,000 to \$100,000

5-year job growth trend: 21.9%

AU Job listings: 1,665

Course pathway: Bachelor of Biomedical Science (Medical)

*Requires additional study

Roles and salaries are estimates derived from Seek and should be used as a guide only

Learn more



A photograph of a modern lecture hall with tiered wooden seating. In the foreground, a young woman with long dark hair, wearing a white ribbed sweater, sits next to a young man with curly brown hair wearing a dark blue t-shirt. They are both looking at a laptop held by the man. The woman is also looking at a book or folder. In the background, several other students are seated on the tiered benches, some using laptops. The room has large windows on the right side, letting in natural light.

PATHWAYS INTO A BACHELORS

AT LA TROBE, THERE'S MORE THAN ONE WAY INTO UNI. A DIPLOMA IS A GREAT PATHWAY OPTION INTO A BACHELOR'S COURSE.

If students didn't get the ATAR they wanted or they don't have an ATAR, a diploma at La Trobe University may be the pathway. Plus, with a diploma, students can get course credit towards a range of degrees at La Trobe, so they can graduate sooner.

Several of our diploma offerings no longer need an ATAR as an entry requirement, allowing more access for students. Prerequisites may vary between diplomas, and students must still meet the minimum requirements for their chosen course. Students can now choose from several diploma courses with ATARs removed below:

Diploma in Business

Diploma in Health Sciences

Diploma of Information Technology

Diploma of Arts

Diploma of Biological Sciences

Diploma of Elite Sport Business

Diploma of Rural Health

Diploma of Science

Diploma of Sport Coaching and Development

Diploma of Agricultural Science

Students can also take advantage of Diploma/Bachelor packaged course offerings. We have bundled some of our popular Diploma/Bachelor packaged offers, where students can study a diploma and have their spot locked in their bachelor's course.

[Find out more](#)



COURSE FEATURES

AND UPDATES

DOUBLE MAJOR OR DOUBLE DEGREE

Double major

Some degrees allow students to complete a double major within a single degree. A double major is when students enrol in a single degree but complete the requirements for two different specialisations within that degree, this results in one degree with two majors. A double major typically takes the same amount of time as completing one degree.

Double Degree

A double degree combines two separate degrees and allows students to study these concurrently. Typically a double degree would take 1-2 years of extra study but has the benefit of less study time than if each degree was completed separately. Double degrees are a great way for students to combine career aspirations with interest areas providing future career flexibility and depth of knowledge in two fields. For example: A student may have aspirations to be a Lawyer and a passion for languages, combine these and Study a Bachelor of Laws (Honours) / Bachelor of Arts and choose from a huge range of arts majors.

Find out more

UNDERGRADUATE PACKAGED OFFERS IN 2025

Our packaged degrees give students an alternative pathway into the career of your choice by bundling related undergraduate and postgraduate courses. A packaged offer guarantees admission into one or our competitive entry, limited place postgraduate courses. Packaged offers are subject to their own admissions requirements.

- Master of Clinical Audiology packaged with:
 - Bachelor of Biomedicine
 - Bachelor of Health Sciences
 - Bachelor of Psychological Science
- Master of Dietetics packaged with:
 - Bachelor of Food and Nutrition
- Master of Teaching (Primary) packaged with:
 - Bachelor of Arts
- Master of Teaching (Secondary) packaged with:
 - Bachelor of Arts
 - Bachelor of Science

We've also bundled some of our popular Diploma/Bachelor packaged offers, where students can study a Diploma and have their spot locked in their Bachelors course. Browse our website for further information on Diploma to Bachelors packaged course offerings.

[Learn more](#)



COURSE FEATURE

AND UPDATES

BACHELOR OF NUTRITION AND MASTER OF DIETETICS PACKAGED COURSE OFFER

ENTRY REQUIREMENTS

ATAR:

Melbourne (Bundoora) 86.05*

**Use as a guide only. This ATAR was created in January 2025 and may change for 2026 entry.*

PREREQUISITES

VCE: VCE: Units 3 and 4: a study score of at least 25 in English (EAL) or at least 20 in English other than EAL.

ABOUT

La Trobe has a long, proud history of nutrition education, having offered nutrition studies for more than 30 years, and accredited Dietetic degrees for over a decade. Students enrolling in the Bachelor of Food and Nutrition and Master of Dietetics Packaged offer will undertake an undergraduate degree in food and nutrition with a guaranteed offer into the competitive Master of Dietetics, subject to meeting minimum grade requirements. Students will have the opportunity to complete both the Bachelor and Masters degrees within 4 years.

Bachelor of Food and Nutrition (2.5 years accelerated option)

Lead in the health sector as a nutrition professional with hands-on training in teaching kitchens and labs. Study sustainability, food innovation, culture, physiology, biochemistry, and nutrition's role in disease, in a program built with industry to make you career-ready.

Master of Dietetics (1.5 years)

Build expertise in nutrition assessment, therapy, and counselling, with 107 days of placement across clinical, public health, and research settings. Graduate ready for roles in sports nutrition, paediatrics, private practice, hospitals, community health, NGOs, research, and academia.

Accreditation

The Master of Dietetics is currently accredited by Dietitians Australia. A graduate of this program within the current Accreditation period is eligible to join the APD Program. Professional membership may require an application to the professional body and may have additional or ongoing requirements beyond the completion of the degree. Please



STUDENT SPOTLIGHT

'Having a guaranteed pathway into dietetics at La Trobe gave me confidence to focus on my studies without competitive entry pressure. I could build a strong nutrition science foundation while developing critical thinking, communication, and clinical reasoning skills, feeling prepared for my dietitian journey.'

Deana Sikovska – Recent graduate, Master of Dietetics.

[Learn more](#)



COURSE FEATURES AND UPDATES

BACHELOR OF EDUCATION

ENTRY REQUIREMENTS

ATAR:

- Melbourne (Bundoora) 70.15
- Albury Wodonga 70.8
- Bendigo 70.10W
- Mildura 70.30
- Shepparton N/P*

2025 lowest selection rank (including adjustment factors) based on the final 2025 ATAR profile

*N/P: Not published (includes categories with less than five students).

PREREQUISITES

VCE: VCE: Units 3 and 4: a study score of at least 30 in English (EAL) or at least 25 in English other than EAL.

Units 1 and 2: satisfactory completion in one of Maths: General Mathematics, Maths: Mathematical Methods or Maths: Specialist Mathematics or Units 3 and 4: any Mathematics

Selection criteria: All applicants must complete a situational judgement test for entry into teaching programs in Victoria, assessing personal and professional attributes. Choose the online CASPer Test or La Trobe's free Aptitude for Teaching Assessment (AFTA), available for online registration.

ABOUT

Gain the skills, experience and confidence to make a real impact as a qualified teacher from day one with La Trobe's accredited Bachelor of Education. Offered at every Victorian campus, this flexible degree allows you to explore your options before choosing your teaching focus – early childhood and primary, primary, or secondary – at the end of first year. You'll develop classroom management skills, design lesson plans, and guide students through at least 80 days of placement in schools and education centres across metropolitan, regional and rural Victoria.

Throughout your studies, you'll build expertise in digital learning, literacy, numeracy, student development and classroom readiness, while learning to design inclusive learning environments for students from diverse backgrounds, including variations in race, gender, ethnicity, socioeconomic status and Indigenous heritage. You'll explore evidence-based teaching approaches and apply them through embedded placements, gaining practical experience that prepares you for the demands of a modern classroom. Supported by experienced teaching staff and inspired by leading researchers transforming literacy education, you'll graduate with an accredited degree and the in-demand skills to begin your teaching career, ready to inspire students and make a lasting difference in their learning journeys.

[Learn more](#)



ENTRY REQUIREMENTS

2025 lowest selection rank (including adjustment factors) based on the final 2025 ATAR profile

VCE: Units 3 and 4: a study score of at least 25 in English (EAL) or at least 20 in English other than EAL.

With La Trobe's flexible Bachelor of Arts, you can choose from around 50 majors and minors across humanities, social sciences, business, health and science – keeping your career options open while pursuing your passions.

In your first year, explore diverse areas – from languages and history to politics and creative writing. In later years, deepen your specialisation while adding electives to broaden your skills. You can study on-campus in Melbourne or online with live, interactive classes.

Gain real-world experience through placements with organisations such as SBS Radio, the Asylum Seeker Resource Centre or the United Nations Association of Australia, or take part in international study opportunities. Throughout your degree, you'll develop valuable skills in critical thinking, emotional intelligence, creativity and communication – preparing you for a wide range of career possibilities.

La Trobe's open access majors and minors mean you could customise your degree with cross-disciplinary studies, work-integrated learning and study overseas.

Whatever you're studying, if there's enough spare credit points in your course structure and room in your timetable, you could choose an open access major or minor from your course's discipline or a completely different discipline – mix business with science or arts with IT or combine a range of disciplines to design a degree to match your interests and truly find your niche.

Learn more





COURSE FEATURE

BACHELOR OF HEALTH SCIENCES

ENTRY REQUIREMENTS

ATAR:

- Melbourne (Bundoora) 55.25*
- Online 55.25*

**Use as a guide only. This ATAR was created in January 2025 and may change for 2026 entry*

PREREQUISITES

VCE: Units 3 and 4: a study score of at least 25 in English (EAL) or at least 20 in English other than EAL.

HSC: One of English Standard, English Advanced (Band 2), English as an Additional Language or Dialect (Band 3).

ABOUT

Change the lives of individuals and populations with La Trobe's Bachelor of Health Sciences. Students undertake placements and work-based learning in a variety of settings including hospitals, private and not-for-profit organisations, government departments and the community sector.

Through a combination of theory and practice, students build skills in scientific thinking and communication, lab and fieldwork, problem solving, collaboration, professional conduct and more that sets them up for career success. They'll graduate ready to make real impact on health policy and to practice in areas such as digital health, environmental health, nutrition or health promotion, or pathway into a range of postgraduate health and allied health degrees.

IN THE NEWS

New research from La Trobe's Dr Caroline de Moel-Mandel and Megan Budgen found that "As TikTok's influence continues to grow, it is becoming increasingly challenging for young adults to distinguish credible health information from misleading content."

Find out more



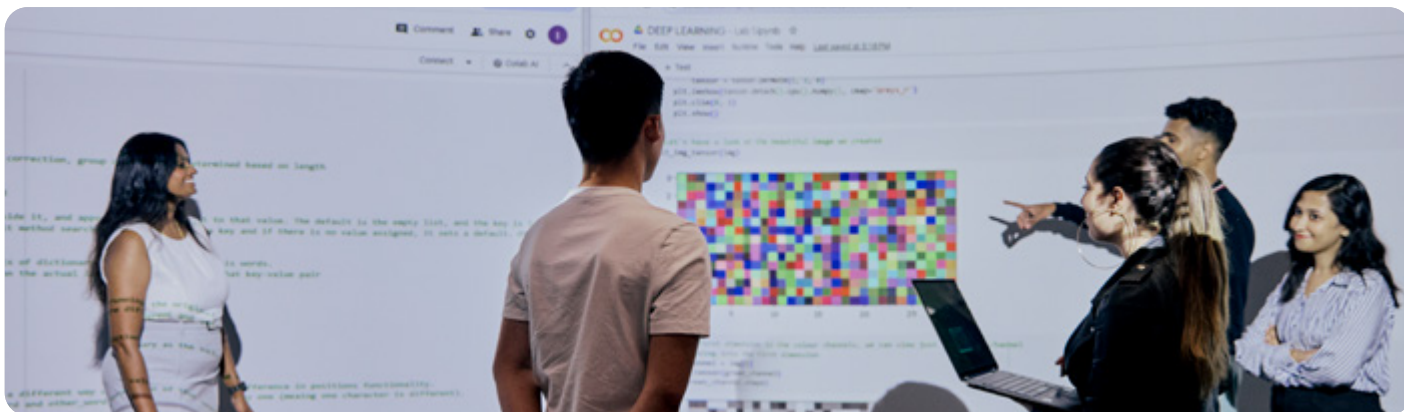
STUDENT SPOTLIGHT

'La Trobe provides such unique courses that really give you a competitive advantage out in the field. We've got such fantastic tutors, lecturers and guest speakers we can always rely on.'

Susan Saldanha – Bachelor of Business/Bachelor of Health Sciences

Learn more





COURSE FEATURE

BACHELOR OF CYBERSECURITY

ENTRY REQUIREMENTS

ATAR:

- Melbourne (Bundoora) 60.20*
- Sydney 55.50*
- Online NC

**Use as a guide only. This ATAR was created in January 2025 and may change for 2026 entry*

PREREQUISITES

VCE: Units 3 and 4: a study score of at least 25 in English (EAL) or at least 20 in English other than EAL.

ABOUT

Students develop a highly specialised technical skill set as they learn about the history of hacking, build their coding expertise, and access industry-based projects and mentoring opportunities with major corporations.

Students have access to the cybersecurity laboratory featuring a server hosting advanced intrusion detection software, network and system forensic tools, and penetration testing tools.

IN THE NEWS

La Trobe researchers have developed a new security framework designed to predict and detect cybersecurity attacks on Internet of Things (IoT) devices. It is hoped the framework will enhance cybersecurity in critical areas such as smart cities, healthcare and industrial systems.

[Find out more](#)



STUDENT SPOTLIGHT

'We have a cybersecurity lab with tools you'd usually pay thousands of dollars to access. We're taught by industry people as well as academics – one of my professors is currently at Microsoft – and you hear about opportunities you wouldn't otherwise. There are lots of opportunities because there's a huge demand for people with these kinds of skills.'

Maha Afaneh – Cybersecurity

[Learn more](#)





COURSE FEATURE

BACHELOR OF INFORMATION TECHNOLOGY

ENTRY REQUIREMENTS

ATAR:

- Melbourne (Bundoora) 55.05*
- Sydney N/P*
- Online 55.55*
- Bendigo 58.50*

*Use as a guide only. This ATAR was created in January 2025 and may change for 2026 entry

PREREQUISITES

VCE: Units 3 and 4: a study score of at least 25 in English (EAL) or at least 20 in English other than EAL.

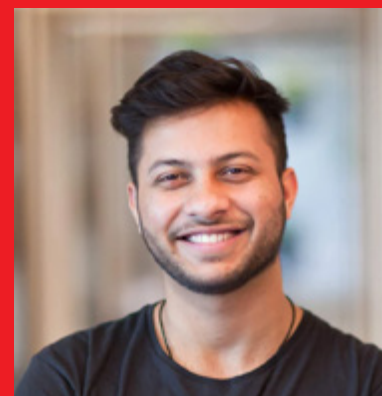
ABOUT

La Trobe's Bachelor of Information Technology equips students with skills across programming, networking, databases, systems analysis and design, and project management. With industry-based projects and CISCO certification embedded in the course, they'll receive professional mentoring opportunities as they build career ready skills. They'll also gain access to our expert research centres, including the Centre for Technology Infusion and our state-of-the-art Technology Innovation Lab for the Internet of Things – developed in collaboration with Microsoft and CISCO.

IN THE NEWS

La Trobe has a new partnership with ServiceNow an IT cloud management software which allows students to develop in demand job ready skills and solve real-world problems through their study. Students can also gain valuable certifications in ServiceNow.

Find out more



STUDENT SPOTLIGHT

'I'm now so confident with my IT skills, programming and web development. Teachers respond quickly to help in any way they can. I ended up using my hour-long consultation time and received really good feedback on my assessments.'

Daim Zaidi – Bachelor of Information Technology

Learn more





COURSE FEATURE

BACHELOR OF PSYCHOLOGICAL SCIENCE

ENTRY REQUIREMENTS

ATAR:

- Melbourne (Bundoora) 55.35*
- Online 56.15*
- Bendigo 57.40*
- Albury-Wodonga 55.30*

**Use as a guide only. This ATAR was created in January 2025 and may change for 2026 entry*

PREREQUISITES

VCE: Units 3 and 4: a study score of at least 25 in English (EAL) or at least 20 in English other than EAL.

ABOUT

Through La Trobe's Bachelor of Psychological Science, students explore the complexities of the human mind and how it drives behaviour to prepare them for a meaningful career in mental health and beyond.

Students develop analytical, research and communication skills, and graduate with flexible career and pathway options in psychology-related fields including human services and marketing – or pathway into a range of postgraduate health and psychology degrees.

IN THE NEWS

Research lead by La Trobe's Dr Joshua Marmara has examined the psychological and behavioural factors that contribute to body appreciation and wellbeing – and how this differs between men and women.

Find out more



STUDENT SPOTLIGHT

"What I value most about my psychology degree is how it deepens my understanding of human behaviour and mental processes. It provides technical knowledge, builds compassion and responsibility, and through internships and work-integrated learning, I gain hands-on experience that makes me highly competitive in the job market."

Priscila Marques De Sousa –
Bachelor of Psychological Science

Learn more





COURSE FEATURE

BACHELOR OF CIVIL ENGINEERING (HONOURS)

ENTRY REQUIREMENTS

ATAR:

- Melbourne (Bundoora) 60.15*
- Bendigo 64.40*

**Use as a guide only. This ATAR was created in January 2025 and may change for 2026 entry*

PREREQUISITES

VCE: Units 3 and 4: a study score of at least 25 in English (EAL) or at least 20 in English other than EAL. Units 3 and 4: a study score of at least 20 in one of Maths: General Mathematics, Mathematical Methods or Specialist Mathematics.

HSC: One of English Standard, English Advanced (Band 2), English as an Additional Language or Dialect (Band 3) plus Band 2 in one of Mathematics Standard 2, Mathematics Advanced or Mathematics Extension 2.

ABOUT

As one of the oldest engineering providers in Australia, we work closely with industry to ensure our programs equip graduates with the practical and technical skills they need to succeed in a dynamic, fast paced profession.

Our students gain real world experience through work integrated learning and industry projects across a range of industries such as construction, natural resources, renewable energy, oil and gas, mining, local or state government and more.

IN THE NEWS

Dr Long Truong a senior lecturer in Civil Engineering at La Trobe University has been involved in new research to improve nighttime safety at rural railway level crossings. The results showed that the combination of photoluminescent markings and glow-in-the-dark signs significantly reduced approach speeds and increased compliance.

Find out more



STUDENT SPOTLIGHT

'My Work Integrated Learning placement was with Stantec, an engineering consultancy company. I have learned how essential it is to be able to communicate with clients and colleagues. WIL has opened my eyes to my future career, and the steps I need to take to succeed in it.'

Lauren Ranisavljev – Bachelor of Civil Engineering (Honours)

Learn more





COURSE FEATURE

BACHELOR OF SPORT AND EXERCISE SCIENCE

ENTRY REQUIREMENTS

ATAR:

- Melbourne (Bundoora) 60.90*
- Bendigo 63.10*

**Use as a guide only. This ATAR was created in January 2025 and may change for 2026 entry*

PREREQUISITES

VCE: Units 3 and 4: a study score of at least 20 in one of Health and Human Development, Physical Education, any Mathematics (General mathematics, Mathematical Methods, Specialist Mathematics, Further Mathematics), or in one of Biology, Chemistry, Physics, Psychology.

Units 3 and 4: a study score of at least 25 in English (EAL) or at least 20 in English other than EAL.

ABOUT

Students can turn their passion on the field into a career by helping people build strength, regain movement, prevent injuries and perform at their peak.

Students graduate ready to launch their career in the sport and exercise science industry or pursue postgraduate study in areas such as sport analytics, strength and conditioning, and other allied health disciplines.

IN THE NEWS

New research led by Professor Russell Hoyer, Dr Pam Kappelides and Haley Baxter examines the experiences of women who coach in community sporting clubs.

[Find out more](#)



STUDENT SPOTLIGHT

I chose La Trobe because: 'I heard La Trobe had a good reputation for allied health courses, and it was closer to home. I also really liked the look of the Sports Park facilities and how much is specific for sports science.'

Anique Hollingworth – Bachelor of Sport and Exercise Science

[Learn more](#)





Alex Sims

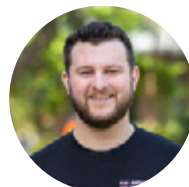
Director Domestic Student Recruitment

UNDERGRADUATE TEAM



Jemima Bowen

Melbourne Campus



James Alvarez

Melbourne Campus



Livio Sikora

Melbourne Campus



Jed Pryor

Melbourne Campus



Gemma Silver

Melbourne Campus



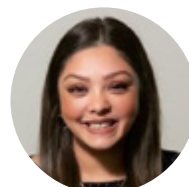
Zai Dashi Naw

Melbourne Campus



Justine Williams

Bendigo Campus



Kristy Kumar

Bendigo Campus



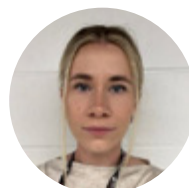
Carli Spence

Bendigo Campus



Trudy Wright

Bendigo Campus



Erika Salathiel

Bendigo Campus



Elicia Thomson

Shepparton Campus



Marcella Bulic

Albury-Wodonga Campus



**Jessica
Chalmers-Borella**

Albury-Wodonga Campus



Nadine Malycha

Mildura Campus

Connect with us

We're excited about the year ahead and supporting you and your students to find their dream course at La Trobe.

For support, please contact:
undergrad@latrobe.edu.au

Meet and connect with our team

Disclaimer: The information contained in this publication is indicative only. While every effort is made to provide full and accurate information at the time of publication, the University does not warrant the currency, accuracy or completeness of the contents. The University reserves the right to make changes without notice, at any time in its absolute discretion, including but not limited to varying admission or assessment requirements, or varying or discontinuing any course or subject. To the extent permitted by law, the University does not accept responsibility for any loss or damage occasioned by use of any of the information contained in this publication. For course information updates, please visit: latrobe.edu.au

La Trobe University is a registered provider under the Commonwealth Register of Institutions and Courses for Overseas Students (CRICOS). CRICOS Provider Code Number 00115M - TEQSA PRV12132; Provider Category: Australian University. Published by La Trobe University