



LA TROBE
UNIVERSITY



centre for alcohol
policy research

ANNUAL REPORT

2025



STAFF AND STUDENTS

CAPR has an interdisciplinary team of researchers with expertise in sociology, public health, psychology, epidemiology, biostatistics and computer science who are brought together in their research on alcohol. The diversity of expertise and experience means that CAPR is well placed to deliver high-quality research.

Professor Emmanuel Kuntsche
CAPR Director

Distinguished Professor Robin Room
Founding CAPR Director

Dr Amy Pennay
Tracey Banivanua Mar Fellow, Deputy Director of CAPR, and Head of the Intersections of Drinking Cultures, Health and Policy research stream

Professor Kylie Lee
Head of the Priority Populations research stream

Professor Anne-Marie Laslett
NHMRC Emerging Leadership Fellow and Head of the Alcohol-Related Harm research stream

Associate Professor Sarah Callinan
Head of the Measurement and Monitoring research stream

Dr James Conigrave
Deputy Head of the Priority Populations research stream

Associate Professor Heng Jiang
Head of the Alcohol Policies and Social Responses research stream

Dr Benjamin Riordan
ARC DECRA Fellow and Head of the Media and Emerging Technologies research stream

Research Fellows
Dr Mustafa Al Ansari
Dr Gabriel Caluzzi
Dr Megan Cook
Dr Nicole Hayes
Dr Koen Smit
Dr Annalee Stearne
Dr Teagan Weatherall

Clinical Research Officer
Lynette Bullen

Senior Project Officer
Nicole Hewlett

Administration and Research Support

Anne Bellairs
Janette Mugavin
Taleah Reynolds
Johnson Yuen

Casual Staff
Dr Basma Al-Ansari
Summer Loggins
Dean Miller
Dr Van Nguyen
Jade Rintala
Dr Catherine Zheng

PhD Students

Zakir Abdu Adem
Gedefaw Alen*
Dan Anderson-Luxford*
Natalie Cerocchi*
Simon D'Aquino
Jack Delmenico*
Filip Djordjevic
Tamika Galea
Cassandra Hopkins*
Srishti Kapoor
Klaudia Kupa*
Yvette Mojica-Perez*
Maree Patsouras*
Amany Sabry Basaly Tanyos
Samatha Salim
Alexandra Torney*
Tim Weatherall
Bree Willoughby*
Belay Desye Wubu



CAPR team at La Trobe University City Campus Melbourne

*Also held a research officer (fixed term or casual) position with CAPR.

■ SNAPSHOT

PUBLICATIONS = 131



**114 PEER REVIEWED
JOURNAL PUBLICATIONS**

(includes online early view articles)



**3 BOOKS AND BOOK
CHAPTERS**



13 REPORTS



1 PHD DISSERTATION

MEDIA = 71 (EXCLUDING SOCIAL MEDIA FOLLOWERS)



**25 MEDIA RELEASES
AND STORIES**



**40 MEDIA APPEARANCES
(RADIO AND TV)**

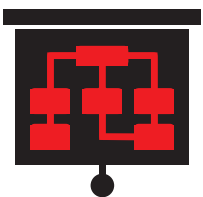


**4 BLOGS AND
2 PODCASTS**



**1082 SOCIAL MEDIA
FOLLOWERS ON BLUESKY**

PRESENTATIONS = 116



**61 PRESENTATIONS AT
SEMINARS AND MEETINGS**



**44 CONFERENCE
PRESENTATIONS**



**7 WORKSHOPS AND
OTHER ACTIVITIES**



4 CAPR FORUMS

(with 145 attendees)

PEOPLE = 78



22 FULL-TIME AND PART-TIME STAFF



19 PHD STUDENTS



6 CASUAL STAFF



26 HONORARY STAFF

(Australian = 18;
international = 8)



5 AFFILIATE RESEARCHERS AT LA TROBE UNIVERSITY

SCIENTIFIC CONTRIBUTIONS AND COLLABORATIONS = 147



31 EDITORIAL APPOINTMENTS



63 NATIONAL COLLABORATORS

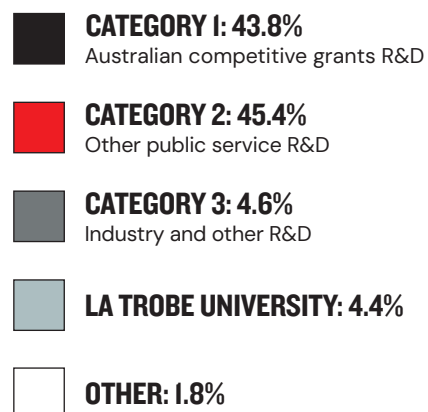
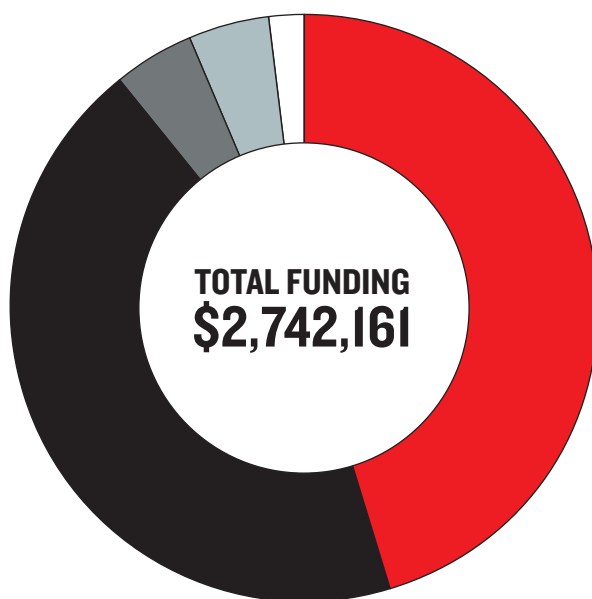
(count is for institutions, not individuals)



53 INTERNATIONAL COLLABORATORS

(count is for institutions, not individuals)

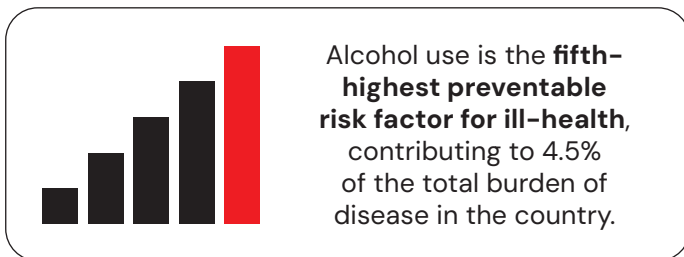
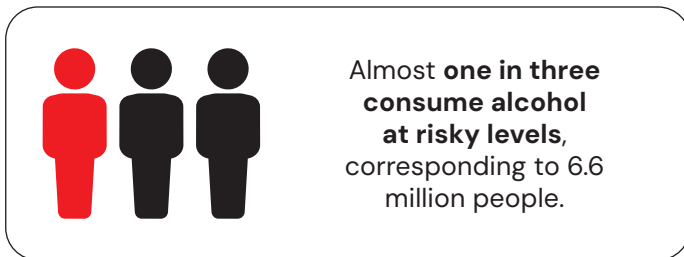
SUMMARY OF FUNDING SOURCES



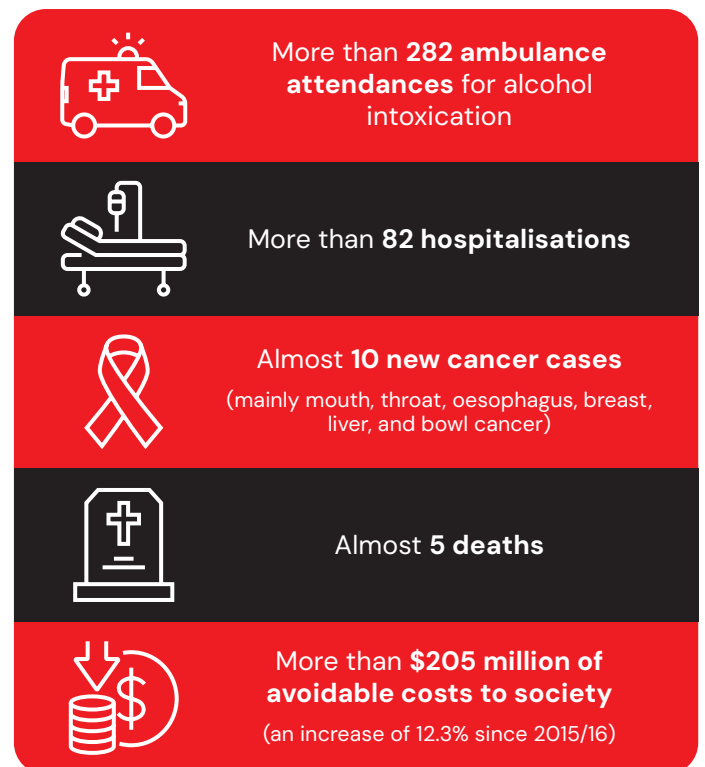
Note: Category 1, 2 and 3 is per the Higher Education Research Data Collection (HERDC) specifications for research and development (R&D) income data

THE IMPORTANCE OF ALCOHOL POLICY RESEARCH

The health and social harms resulting from alcohol use are widespread. According to the World Health Organization (WHO), alcohol use plays a causal role in more than 200 diseases, injuries and other health conditions.



Each day in Australia, alcohol use is responsible for, on average:



According to the alcohol prevention paradox, although high-risk drinkers have a greater individual risk of harm, most of the alcohol-related burden is nevertheless produced by low-to-moderate drinkers because there are so many of them. WHO acknowledges that there is no safe level of alcohol consumption. Likewise, the Australian alcohol guidelines state that drinking less frequently, and drinking less on each day or drinking occasion, reduces the lifetime risk of harm from alcohol. This is the case for any drinker, not only excessive or dependent drinkers.

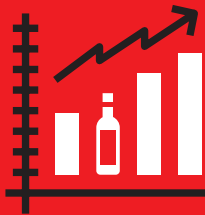
Therefore, policy measures that target a range of populations and are grounded in compelling scientific evidence are needed to decrease the enormous burden of alcohol use on individuals, families, and communities in Australia and worldwide.

The Centre for Alcohol Policy Research (CAPR) is a world-class academic unit at the forefront of alcohol research. CAPR's discoveries are used to promote and inform the development of evidence-based, effective alcohol policy in Australia and internationally.

Due to a fundamental conflict of interest, CAPR and its staff do not accept any funding, in-kind support, or have any gainful relationship with industries that produce, distribute, or sell alcohol, nicotine, cannabis, or gambling products. This includes salary support, consultancy fees, honoraria, gifts, expert testimony, and travel support.

OUR AIM

We aim to conduct world-leading alcohol research to build and disseminate the evidence needed for effective public health-oriented alcohol policies. To achieve this aim, we focus our attention on six streams of research:



Measurement and Monitoring:

Trends and patterns in alcohol consumption, purchasing and harm, as well as contexts and predictors of harmful drinking.

Head: Sarah Callinan

Major accomplishments:

- Provided new insights into online alcohol sales and rapid delivery services which was cited by the Victorian Coroner's recommendation to tighten alcohol delivery regulations.
- Continued to cultivate the next generation of early career researchers, with PhD student, Yvette Mojica-Perez, receiving the Nancy Millis Award in recognition of her exceptional PhD thesis.

Example projects:

- An examination of the distribution of alcohol consumption in Australia (*FARE*)
- Exploring the relationship between pricing and alcohol consumption in Australia (*La Trobe University PhD scholarship*)



Intersections of Drinking Cultures, Health and Policy:

Cultures of drinking, health outcomes, and social determinants of health and policy contexts.

Head: Amy Pennay

Major accomplishments:

- Shared expertise to examine drinking practices among particular populations such as young people and LGBTQIA populations.
- Extended our understanding of the alcohol harm paradox using Australian data. Future research will examine health inequalities and other mechanisms.

Example projects:

- From mainstream to margins: Young people, heavy drinking and de-normalisation (*ARC Discovery Project*)
- Young women's risky alcohol and other drug use (*Department for Health, Disability and Ageing*)



Alcohol-related Harm:

Harm from others' drinking, family violence, child abuse and neglect.

Head: Anne-Marie Laslett

Major accomplishments:

- Strengthened local and global collaborations to advance understanding of alcohol's harm to others and to inform cross-national, gender-responsive policy responses. This work included a strong focus on harms to children, gendered patterns of harm, and harms across social contexts. A key milestone was the launch of the landmark *Australian Alcohol's Harm to Others* report.

Example projects:

- Alcohol's harm to others: Estimating and reducing harm (*NHMRC Investigator Grant*)
- Critical moments in responses for children affected by family substance use (*ARC Linkage Project*)



Alcohol Policies and Social Responses:

Taxation, trade agreements, liquor outlets, and policy changes.

Head: Heng Jiang

Major accomplishments:

- Investigated the impact of the repeal of the alcohol minimum pricing policy in the Northern Territory, examined the associations between alcohol and tobacco expenditure and financial stress, and explored the effects of government alcohol monopolies on consumption patterns and health outcomes across OECD countries.

Example projects:

- Modelling impact of policy on alcohol's harm to others (*ARC Linkage Project*)
- Alcohol consumption and gambling-related harms (*Department of Justice and Community Safety Victoria*)



Media and Emerging Technologies:

Alcohol exposure in social media and artificial intelligence.

Head: Benjamin Riordan

Major accomplishments:

- Developed open-access tutorials on how to use modern AI methods to more efficiently analyse media data and applied these methods to estimate how common alcohol is in modern media.
- Analysed alcohol-related content in Australian influencers' social media posts to better understand how often young people see alcohol-related content.

Example projects:

- Using AI to quantify alcohol exposure in videos (*ARC Discovery Project*)
- Using AI to reveal the impact of digital alcohol exposure on alcohol use (*ARC DECRA*)



Priority Populations:

Reducing harms from alcohol and drug use for populations which face systemic inequities.

Heads: Kylie Lee and James Conigrave

Major accomplishments:

- Attracted interest from health partners Australia-wide in our digital app tools. Completed data collection to measure accuracy of Drug App tool (*Ideas Grant*).
- Delivered symposium on collaborative approaches to implementation studies (Grog Check), at leading Australasian alcohol and drug conference (MRFF Primary Health Care Digital Innovations).

Example projects:

- 'BubSafe': Co-creating Australia's first integrated digital health tool to prevent alcohol use during pregnancy among Aboriginal and Torres Strait Islander peoples (*NHRMC Investigator Grant*)
- Road maps for NT (R4NT): Working together to create solutions to address road safety in the Northern Territory (*National Road Safety Action Grants Program*)

HIGHLIGHTS AND ACHIEVEMENTS


POLICY MATTERS

CAPR's policy impact is driven by the translation of independent research and practice-based knowledge into timely contributions that shape alcohol policy debates and regulatory reform.

Five position statements and two policy submissions



CAPR is an inaugural member of **Alcohol Change Victoria (ACV)**, a coalition of leading organisations advocating for stronger alcohol policy.



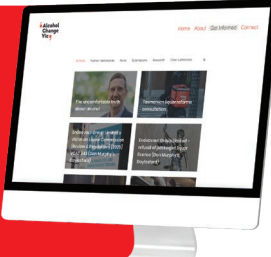
Through ACV, CAPR contributed to **five position statements addressing key alcohol-related harms**, including consumer protections for online sales and home delivery, and the introduction of minimum unit pricing.



CAPR also contributed to **policy submissions on alcohol taxation and rapid detoxification**.

Together, these position statements and submissions draw on research evidence and practice-based knowledge to provide timely input into complex policy debates.

More details are available on ACV's website: alcoholchangevic.org




Independent research informs legislative recommendations

In February 2025, Victorian Coroner Ingrid Giles recommended changes to the State's alcohol regulations following the investigation into the death of a 30-year-old Melbourne woman. In the 182 days before her death, she placed 98 alcohol orders, totalling 319 items.



Drawing on a position statement by CAPR and Alcohol Change Victoria (ACV), Coroner Giles raised serious concerns that **rapid and late-night alcohol delivery services are driving increased alcohol consumption across Victoria**.

While the research-to-policy process is rarely linear, this case demonstrates clear impact: CAPR's independent research informed a joint CAPR-ACV submission, which in turn informed the Coroner's recommendations. This provides a concrete example of **CAPR's research directly contributing to policy discussions**.



KNOWLEDGE TRANSLATION

CAPR supports practice and research capability by co-creating practical tools and training resources. Authentic community participation is essential to this work, including both participation in tool development and timely access to the research outputs to which communities have contributed.

Developing and delivering workforce training using the Indigenous Research Impact Screen

Co-creating evidence-based resources and sharing tools with service providers is central to the Priority Populations approach.



For example, a **two-day workforce training course** was delivered in three regional locations –Thubbo (Dubbo), Murrumbidgee (Wagga Wagga), and Nou-woo-ro (Nowra).



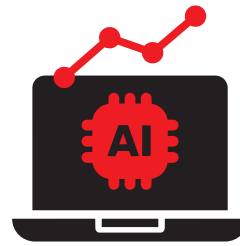
Funded by NSW Health as part of the Special Commission of Inquiry into the Drug 'Ice', the training aims to **strengthen capacity of the NSW alcohol and other drugs workforce** to screen Aboriginal and Torres Strait Islander peoples for alcohol and other drug use and mental health concerns, and to offer brief interventions.

Further training sessions are planned for 2026.



Media methods and emerging technologies

The rapid growth of online media data presents new opportunities to understand how alcohol is discussed online, but analysing these large datasets remains challenging.



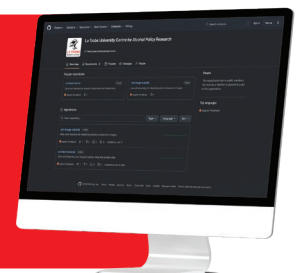
To address this, the Media and Emerging Technologies team has **published tutorials and developed online workbooks** to support social scientists in using **zero-shot learning (ZSL)**, a machine learning approach that allows AI models to analyse data they have not previously seen.



These resources provide practical, **step-by-step guidance on applying ZSL to different types of media data and research questions.**

The tutorials are open access journal publications and the data and GoogleColab workbooks can be found on CAPR's github account.

github.com/ltu-capr



16 REPORTS AND BOOKS

In addition to publishing 114 journal articles, CAPR staff authored 16 reports, technical papers and books that synthesise research evidence and outline implications for policy and service provision. These publications have national and international relevance, and their accessible format supports broader dissemination and potential reach beyond academic audiences.

1



Alcohol Policies: Volume 20B report (International Agency for Research on Cancer Prevention's (IARC) Handbook)

2



Harms to women and children from men's alcohol use: An evidence review and directions for policy

3



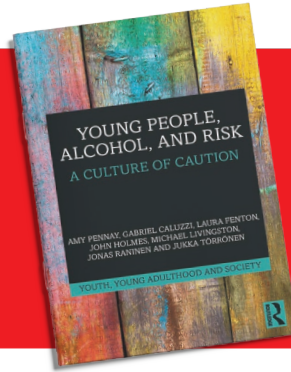
Alcohol's harm to others: Patterns, Costs, Disparities and Precipitants

4



Alcohol retailer off-premise beverage market composition and pricing in New South Wales: July 2023 – April 2025

5



Young People, Alcohol, and Risk: A Culture of Caution

6



Sustainable Development Goals – Alcohol, Young Adults, and the New Millennium: Changing Meanings in a Changing Social Climate

7



Review of alcohol use among Aboriginal and Torres Strait Islander peoples: Patterns, impacts and community-led responses

EXAMPLES OF NEW FUNDING

CAPR has a long history of securing prestigious and highly competitive grants, and 2025 was no exception.



Two CAPR-led Category 1 grants worth over \$1.5M were awarded and CAPR staff were investigators on a multi-institutional Category 1 grant. These grants are considered as the gold-standard public research funding sources.

- *Australian Research Council Future Fellowship (2025, Round 1)* awarded to Amy Pennay to investigate inequalities in alcohol use and drinking problems.
- *National Health and Medical Research Council Emerging Leadership 1* awarded to Teagan Weatherall, an Anaiwan and Kamilaroi Aboriginal woman. The project aims to promote understanding, respect and strengths-based research on alcohol and health.
- *Medical Research Future Fund 2024 Alcohol and Other Drugs (Stream 1)* awarded to Amy Peacock from University of New South Wales, with Emmanuel Kuntsche and Benjamin Riordan as named investigators. The project aims to identify mental and physical alcohol access-related consequences among young people.
- CAPR also secured grant funding of more than \$375K from community and government sources, including: Department of Health and Aged Care; Safe Transport Victoria; Trimbos Institute, The Netherlands; and OCHRe Network (Our Collaborations in Health Research) funded by NHMRC.

MAJOR PROJECT LAUNCH



On December 3, 2025, at the Victorian Parliament, the Honourable Enver Erdogan MLC, Minister for Casino, Gaming and Liquor Regulation launched the **'Alcohol's harm to others: patterns, costs, disparities and precipitants' report**.

The report summarised a four-year Australian Research Council Linkage Project grant. It provides the most comprehensive analysis to date of the magnitude, character, economic burden, disparities, and drivers of alcohol's harm to others across Australia. Anne-Marie Laslett led the project along with other researchers and partners from: La Trobe University; Central Queensland University; Foundation for Alcohol Research and Education; Australian Institute of Family Studies; Monash Health; Australasian College for Emergency Medicine; Alcohol and Drug Foundation; Australian Human Rights Commission; and Australian Rechange Foundation.

From the left: Prof Monica Thielking (La Trobe University), Prof Emmanuel Kuntsche (CAPR), Honorary Enver Erdogan (Minister for Casino, Gaming and Liquor Regulation, Victoria), Prof Anne-Marie Laslett (CAPR), Prof Diana Egerton-Warburton, OAM (Monash Health and Australasian College of Emergency Medicine), Prof Robin Room, Dr Yvette Mojica-Perez, Cass Hopkins; front row: Jade Rintala, Dr Koen Smit and Yini Li (all CAPR/La Trobe University).



COMMUNITY AND STAKEHOLDER ENGAGEMENT



CAPR is committed to contributing its expertise to **national and international policy-making processes**, as well as **developing resources for researchers, service providers, and communities**. These examples illustrate the diverse nature of our work.

- Lynette Bullen, a Clinical Research Officer, was invited to collaborate with the NSW Health Agency for Clinical Innovation to develop a resource to support Aboriginal communities and families affected by cognitive impairment related to substance use.
- In 2025, the Priority Populations team continued its commitment to co-creating culturally informed tools. Working in partnership with the Aboriginal Drug and Alcohol Council (SA) Aboriginal Corporation, the team conducted a validation study of the *Drug App*, a novel culturally-informed tool designed to help Aboriginal and Torres Strait Islander peoples describe their tobacco and illicit drug use.
- The Priority Populations team partnered with the Tobwabba Aboriginal Medical Service (AMS) to evaluate the Nyannbu Wellness Pilot Program, a cultural camp program governed and led by Worimi Elders. The evaluation will be grounded in Worimi ways of knowing, being, and doing, and is guided by the *Ngaa-bi-nya* Aboriginal and Torres Strait Islander program evaluation framework. A key component of this work is building the research capacity of Tobwabba AMS staff and community members to support future community-led evaluations.
- Emmanuel Kuntsche participated in three sessions of the World Health Organization's Technical Advisory Group (TAG) on alcohol and other drug use epidemiology. Across these meetings, the TAG discussed and presented updates on alcohol-related global monitoring and epidemiological work, including estimates of alcohol-attributable disease burden and updated relative risk functions.

ACADEMIC EXCHANGES



Building connections with international and Australian-based researchers and sharing new knowledge is core business for CAPR.

- Gabriel Caluzzi completed a 6-month Visiting Fellowship the Aarhus Institute for Advanced Studies (AIAS), Aarhus University. During this fellowship, he delivered several presentations at the AIAS, an interdisciplinary research group, and the Centre for Drug and Alcohol Research, a social science research group focused on substance use in Denmark. He also delivered invited presentations at the Systembolaget conference in Stockholm, Sweden, and the Scottish Alcohol Research Network meeting in Dundee, Scotland.

As an early career researcher, these knowledge exchange opportunities help lay the foundations for future collaborative projects.



- The University of Agder, in Norway, and its Department of Psychosocial Health invited Anne-Marie for a mini-sabbatical (two weeks in June). During the visit she presented at and participated in a workshop on alcohol's harm to others (AHTO). Anne-Marie also met and collaborated with other researchers on projects to analyse the chat logs of Norwegian children who have been affected by their parents' drinking, violence exposure and quality of life among partners and parents of people who use substance, as well as the Australian AHTO data and international reviews of harms to women and children from men's drinking.

Gabriel Caluzzi delivering a presentation at the Centre for Alcohol and Drug Research Aarhus University, Denmark





From the left: Anne-Marie Laslett, Sarah MacLean, Koen Smit, Serena Vicario, and Emmanuel Kuntsche

- Megan Cook and Alex Torney established a Men and Masculinities research cluster within the Drinking Studies Network (DSN) - drinkingstudies.wordpress.com



- CAPR hosted 7 visiting researchers during 2025: Stella Kraft (University of Manitoba, Canada); Dr Serena Vicario (University of Kent, United Kingdom); Professor Catherine Carstairs (University of Guelph, Canada); Professor Ludwig Kraus (University Medical Center, Germany); Dr Lauren Fothergill, Professor Leanne Hides and Sophia Glasgow (The University of Queensland, Australia).

- The network brings together members from multiple disciplines and aims to create opportunities to discuss emerging issues. The Men and Masculinities cluster specifically seeks to connect researchers interested in studying men's alcohol use, with the goal to stimulate new lines of inquiry, research outputs and collaborative funding applications.

Hosting scholars strengthens institutional capacity, builds lasting partnerships, and creates opportunities for local researchers and communities to exchange ideas.



- Benjamin Riordan coordinated the CAPR Forum series, which showcased national and international research. The series featured guests from around the world, including the United States of America (Dr Megan Strowger, Brown University), Canada (Stella Kraft, University of Manitoba), New Zealand (Emily Hughes, The New Zealand Drug Foundation), and Australia (Maree Patsouras, La Trobe University).



ACADEMIC AWARDS AND ACHIEVEMENTS

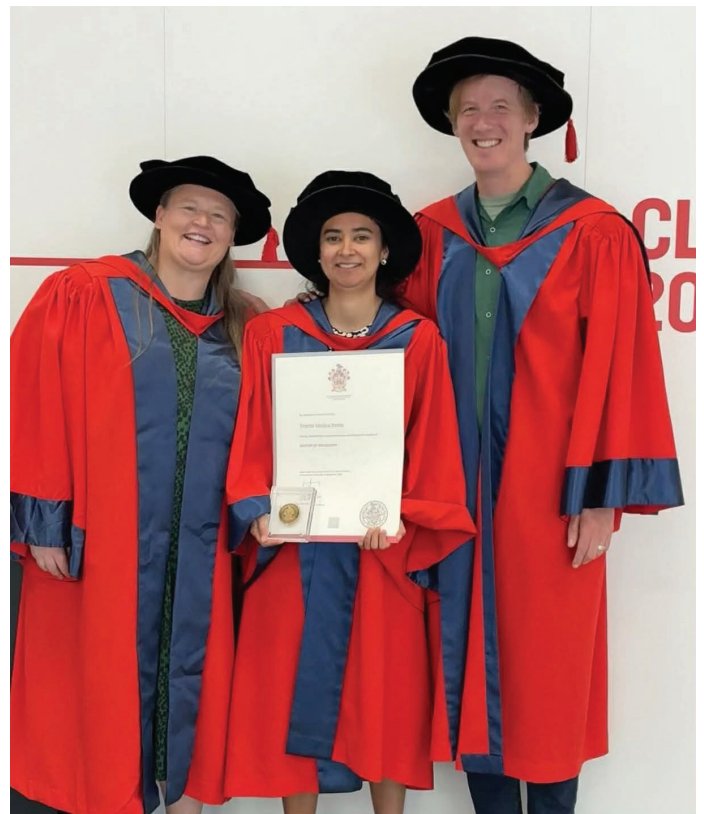


Our researchers were recognised on **international, national and local stages** showcasing the talent and commitment to the pursuit of research excellence.

- Lynette Bullen won first prize at the La Trobe Staff Photo Competition. The photo was taken at the 7 Native Reservations, South Dakota. It represents strength and dignity of First Nations women (see photo below).
- James Conigrave received the Mentor Award from the Australasian Professional Society on Alcohol and other Drugs (APSAD).
- Heng Jiang won the School of Psychology and Public Health's Partnerships – International Award (Teaching and Education).
- Srishti Kapoor was elected as a Higher Degree Research representative for the School of Psychology and Public Health.
- Emmanuel Kuntsche was appointed as one of the 18 global experts to the World Health Organization (WHO) Technical Advisory Group on Alcohol and Drug Epidemiology. The group plays a vital role in advising WHO on global monitoring of alcohol and drug use, their health consequences, and the development of evidence-based policy responses.
- Emmanuel received a School of Psychology and Public Health Graduate Research Supervision Award.
- Anne-Marie Laslett was appointed Professor at La Trobe University in January 2025 and was also appointed to La Trobe University's Academic Board.
- Yvette Mojica-Perez received the Nancy Millis Award for an Outstanding PhD Thesis.
- Amy Pennay received a La Trobe University Mid-Career Researcher Award and a School of Psychology and Public Health Mid-Career Researcher Award.
- Alex Torney received a School of Psychology and Public Health Higher Degree Research Collegiality and Citizenship Commendation.
- Tim Weatherall was awarded a \$10,000 PhD top up from Maali Hub, which is part of the OCHRe Network (Our Collaborations in Health Research) funded by The National Health and Medical Research Council (NHMRC). Maali Hub is dedicated to supporting First Nations Higher Degree by Research students and early to mid-career researchers in Australia.



Lynette's prize-winning photo



Sarah Callinan, Yvette Mojica-Perez and Michael Livingston

ADVISORY COMMITTEE

An Advisory Committee oversees CAPR's activities and gives independent guidance and support to help the Centre meet its aims. CAPR is grateful to the members for their time and dedication.

CHAIR

Professor Rob Moodie

Deputy Head of School and Professor in Public Health, School of Population and Global Health, University of Melbourne

LA TROBE UNIVERSITY

Professor Monica Thielking

Dean and Head of School, Psychology and Public Health

Professor Richard Gray

University Human Ethics Committee and Deputy Vice-Chancellor, Research and Industry Engagement Office

Margo Powell

Chief Advancement Officer, Office of Alumni and Advancement

Professor Adam Bourne

Director, Australian Research Centre in Sex, Health and Society

EXTERNAL EXPERT

Professor Alison Ritter

Director, Drug Policy Modelling Program, Social Policy Research Centre, University of New South Wales

Chris Christoforou

Chief Executive Officer, Victorian Alcohol and Drug Association (VAADA)

CAPR

Professor Emmanuel Kuntsche

Professor and CAPR Director

Professor Robin Room

Distinguished Professor and Founding Director

Dr Amy Pennay

Tracey Banivanua Mar Fellow and Deputy Director of CAPR

Professor Kylie Lee

Professor and Head of Priority Populations

HONORARY & AFFILIATED RESEARCHERS

In addition to its team of 47 staff and PhD students, CAPR has strong ties with 26 honorary and affiliated staff from within La Trobe University, across Australia and around the world.

LA TROBE UNIVERSITY

Dr Robyn Dwyer

School of Psychology and Public Health

Dr Jessica Ison

ReGen Research Group, La Trobe Rural Health School

Associate Professor Sandra Kuntsche

The Bouverie Centre for Systemic Family Therapy

Professor Sarah MacLean

Social Work and Social Policy, School of Allied Health, Human Services and Sport

Dr Mary Walker

Department of Politics, Media, and Philosophy, School of Humanities and Social Sciences

FROM ACROSS AUSTRALIA

Dr Hannah Calverley

Life Saving Victoria, Melbourne

Professor Andrew Dawson

Royal Prince Alfred Hospital, Sydney

Dr Monika Dzikowska

University of Sydney

Dr Michelle Fitts

Western Sydney University

Professor Bradley Freeburn

Aboriginal Medical Service Cooperative Limited, Redfern

Professor Noel Hayman

Centre of Excellence in Aboriginal and Torres Strait Islander Primary Healthcare, Inala Indigenous Health Service

Associate Professor Craig Holloway

Victorian Aboriginal Health Service, Melbourne

Dr Isabella (Bella) Ingram

University of Wollongong

Associate Professor Harindra Jayasekara

Cancer Council Victoria and University of Melbourne

Dr Gemma Khodr

University of Sydney

Dr William Koon

Royal Life Saving Society, Sydney

Associate Professor Michael Livingston

National Drug Research Institute, Curtin University, Melbourne

Associate Professor Jimmy Perry

Aboriginal Drug and Alcohol Council South Australia Aboriginal Corporation, Adelaide

Dr Natasha Reid

Child Health Research Centre, University of Queensland, Brisbane

Dr Marguerite Tracy

University of Sydney

Dr Claire Wilkinson

Drug Policy Modelling Program, University of New South Wales, Sydney

Professor Scott Wilson

Chief Executive Officer, Aboriginal Drug and Alcohol Council South Australia Aboriginal Corporation (ADAC), Adelaide

Dr Cassandra Wright

Menzies School of Health Research, Darwin

INTERNATIONAL

Dr Florian Labhart

Addiction Switzerland, Switzerland

Professor Jennifer (Jen) Merrill

Brown University, Providence, United States of America

Professor Roisin O'Connor

Concordia University, Montreal, Canada

Associate Professor Jonas Raninen

Swedish Council for Information on Alcohol and Other Drugs, Stockholm, Sweden; Karolinska Institutet, Stockholm, Sweden; Södertörn University, Sweden

Dr Megan Strowger

Brown University, Providence, United States of America

Associate Professor Johannes Thru

John Hopkins University, Baltimore, United States of America

Professor Rose Marie Ward

University of Cincinnati, United States of America

Dr Taylor Winter

University of Canterbury, Christchurch, Aotearoa New Zealand

NATIONAL & INTERNATIONAL COLLABORATIONS

Our strong reputation also comes from our ongoing collaborations with a broad range of both Australian and international researchers across countries such as the USA, Canada, Switzerland, Sweden, Denmark and the UK. CAPR staff both lead and provide input into a number of key projects around alcohol policy, alcohol-related behaviours and alcohol's harms to others.



SERVICE TO THE ACADEMIC COMMUNITY

Our staff provide research-based input and advice to the academic community via editorial and reviewing functions for scholarly journals, as well as supervisory responsibilities to PhD students studying at other universities. This is further recognition of the expertise within CAPR and the commitment to training the next generation of alcohol researchers.

EDITORIAL APPOINTMENTS

CAPR staff hold editorial appointments at prestigious, high-impact publications that define academic and scientific excellence across disciplines. These journals include the following:

JOURNAL

Addiction

Addiction Research and Theory

Addicta: The Turkish Journal on the Addictions

Alcohol: Clinical and Experimental Research

BMC Public Health

Contemporary Drug Problems

Drug and Alcohol Review

Drugs: Education, Prevention and Policy

European Addiction Research

Health Sociology Review

International Journal of Adolescence and Youth

International Journal of Alcohol and Drug Research

International Journal of Drug Policy

International Journal of Mental Health and Addiction

International Society for Addiction Journal Editors

Journal of Psychopathology and Clinical Science

Nordic Studies on Alcohol and Drugs

PLOS ONE

PHD STUDENT SUPERVISION BEYOND LA TROBE

Mia Miller

Supervisors: Cassandra Wright, Sandra Kuntsche, Sarah Callinan (CAPR)

Menzies School of Health Research

2022–2025

Marwa Mostafa

Supervisors: Felicity Crombie, Anne-Marie Laslett (CAPR), Mark Stooze, Stuart Kinner

University of Melbourne

2018–present

Van Nguyen Callaly

Supervisors: Cathy Humphries, Margaret Kertesz, Jennifer Davidson, Anne-Marie Laslett (CAPR)

University of Melbourne

2021–2025

Daniel Perkins

Supervisors: Richard Chenhall, Robin Room (CAPR)

University of Melbourne

2021–2025

Roberta Vasconcellos

Supervisors: Taren Sanders, Chris Lonsdale, Philip Parker, Michael Noetel, James Conigrave (CAPR)

Australian Catholic University

2020–present

Emma Vieira

Supervisors: Michael Livingston, Nic Taylor, Amy Pennay (CAPR), Cassandra Wright

Curtin University

2024–present

Susan Welch

Supervisors: Rebekah Moles, Kylie Lee (CAPR)

University of Sydney

2020–2025

Daniel Winter

Supervisors: Carolyn Day, Paul Haber, Lauren Monds, Benjamin Riordan (CAPR)

University of Sydney

2019–present

FUNDING DETAILS

Below is a breakdown of CAPR's key funding sources and where applicable, the major projects funded through these sources.

FUNDS RECEIVED FROM THE SOURCES LISTED HERE TOTALED	2,742,161
CATEGORY 1: NATIONAL HEALTH AND MEDICAL RESEARCH COUNCIL	610,806
Alcohol's harm to others: Estimating and reducing harm (Investigator Grant)	341,155
Better data on methamphetamines and other drugs among Indigenous Australians (Ideas Grant)	227,142
Triangulating social media, global survey and wastewater data to inform policy (Ideas Grant) (via the University of Queensland)	30,009
It's time to flourish: Co-designed perinatal and early years care, self-determined by Aboriginal and Torres Strait Islander women resulting in policy and practice transformation and exceptional service (iCARE) (Project Grant) (via Adelaide University)	12,500
CATEGORY 1: AUSTRALIAN RESEARCH COUNCIL	544,589
Using AI to reveal the impact of digital alcohol exposure on alcohol use (DECRA)	163,891
Critical moments in responses for children affected by family substance use (Linkage Project)	143,968
From mainstream to margins: Young people, heavy drinking and de-normalisation (Discovery Project)	119,537
Using AI to quantify alcohol exposure in videos (Discovery Project)	117,193
CATEGORY 1: MEDICAL RESEARCH FUTURE FUND	47,799
QuikFix Good Night Out Program (Preventive and Public Health Research Initiative) (via The University of Queensland)	47,799
Making it easier for Aboriginal and Torres Strait Islander primary health care services to screen for risky drinking and provide tailored feedback: Adapting the Grog Survey App	-
CATEGORY 2	1,244,267
Australian Government Department of Infrastructure, Transport, Regional Development and Communications and the Arts: Roadmaps for NT: Working to create solutions to address road safety in NT	925,693
Australian Government Department of Health and Aged Care: Young women risky alcohol and other drug use	167,700
NSW Health: Indigenous Risk Impact Screen training (IRIS)	100,541
Safe Transport Victoria: Drugs, alcohol and recreational boaters	25,333
Victorian Health Promotion Foundation: Alcohol in Instagram influencer posts	17,000
Edith Cowan University: Write a review addressing harms from alcohol use among Aboriginal and Torres Strait Islander peoples	6,000
Victorian Alcohol and Drug Association: Critical moments in responses for children affected by family substance use (Linkage Project)	2,000
CATEGORY 3	125,366
Trimbos Institute: Longitudinal trends of alcohol's harm to others in The Netherlands	51,109
Menzies School of Health Research: subcontract	32,606
University of Groningen (The Netherlands): Alcohol regulation – Navigating between permissiveness and prohibition	20,686
Foundation for Alcohol Research and Education: Distribution of drinkers	12,637
Foundation for Alcohol Research and Education: Inquiry into the health impacts of alcohol and other drugs	8,328

OTHER	22,340
Edith Cowan University: Early to Mid-Career Researchers Health Research Related Support Fund	10,000
The University of Melbourne: Exploring cultural factors that can protect against alcohol and other drug use	10,000
Department of Justice and Community Safety: Peer review of a Grant Round 12 report	2,340
MISCELLANEOUS	27,372
Sundry revenue/fee for service	27,372
LA TROBE UNIVERSITY	120,622
DVCRIE and School support and other competitive grants	120,622

Category 1: Australian competitive grants – research and development

Category 2: Other public service – research and development

Category 3: Industry and other – research and development

DVCRIE – Deputy Vice-Chancellor Research and Innovation

DECRA – Discovery Early Career Researcher Award

COMMUNITY AND CONNECTIONS





LA TROBE
UNIVERSITY



centre for alcohol
policy research

Centre for Alcohol Policy Research
School of Psychology and Public Health

La Trobe University
Melbourne, AUSTRALIA



Phone enquiries
+61 (03) 9479 5693



Email
alcoholpolicy@latrobe.edu.au



Visit us
latrobe.edu.au/research/centres/health/capr

Photo credits

Icons: Icons have been designed using resources from Flaticon.com and Shutterstock.com