

# Australian Food Innovation Centre

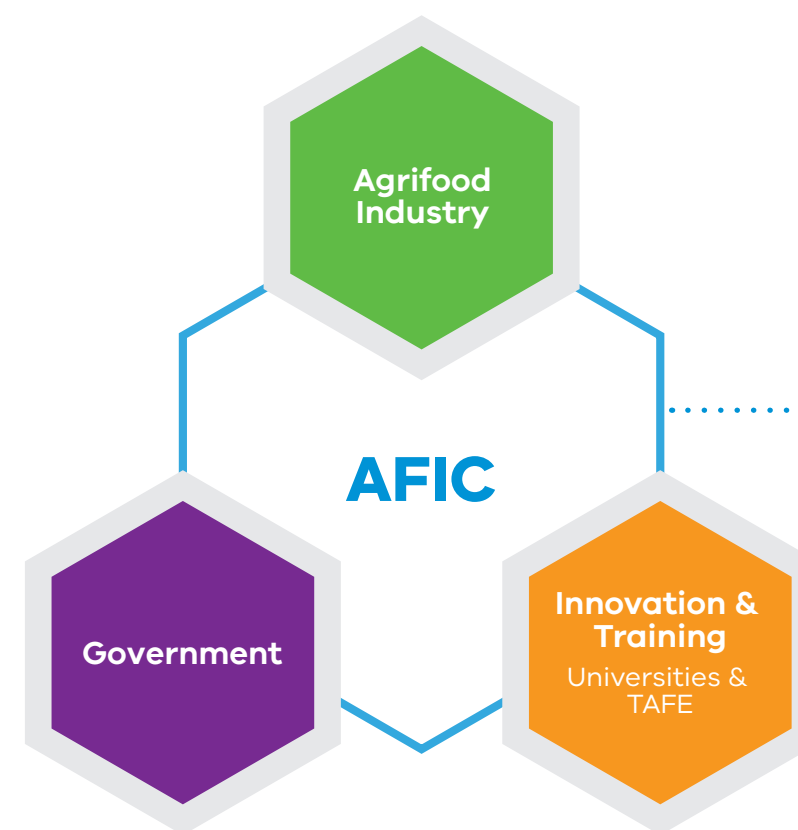
Driving innovation and workforce training for the future of food





# What is the Australian Food Innovation Centre?

The Australian Food Innovation Centre (AFIC) will connect the agrifood industry with leading innovation and workforce training capabilities to boost competitive advantage and underpin the global growth opportunity for Australia's agrifood sector.



## CATALYSING THE GROWTH OF THE AGRIFOOD INDUSTRY IN AUSTRALIA

AFIC aims to bring together agrifood industry, innovation and training providers, and government to connect together like never before in the sector and partner on value add opportunities to accelerate Australia's agrifood sector on the global stage.

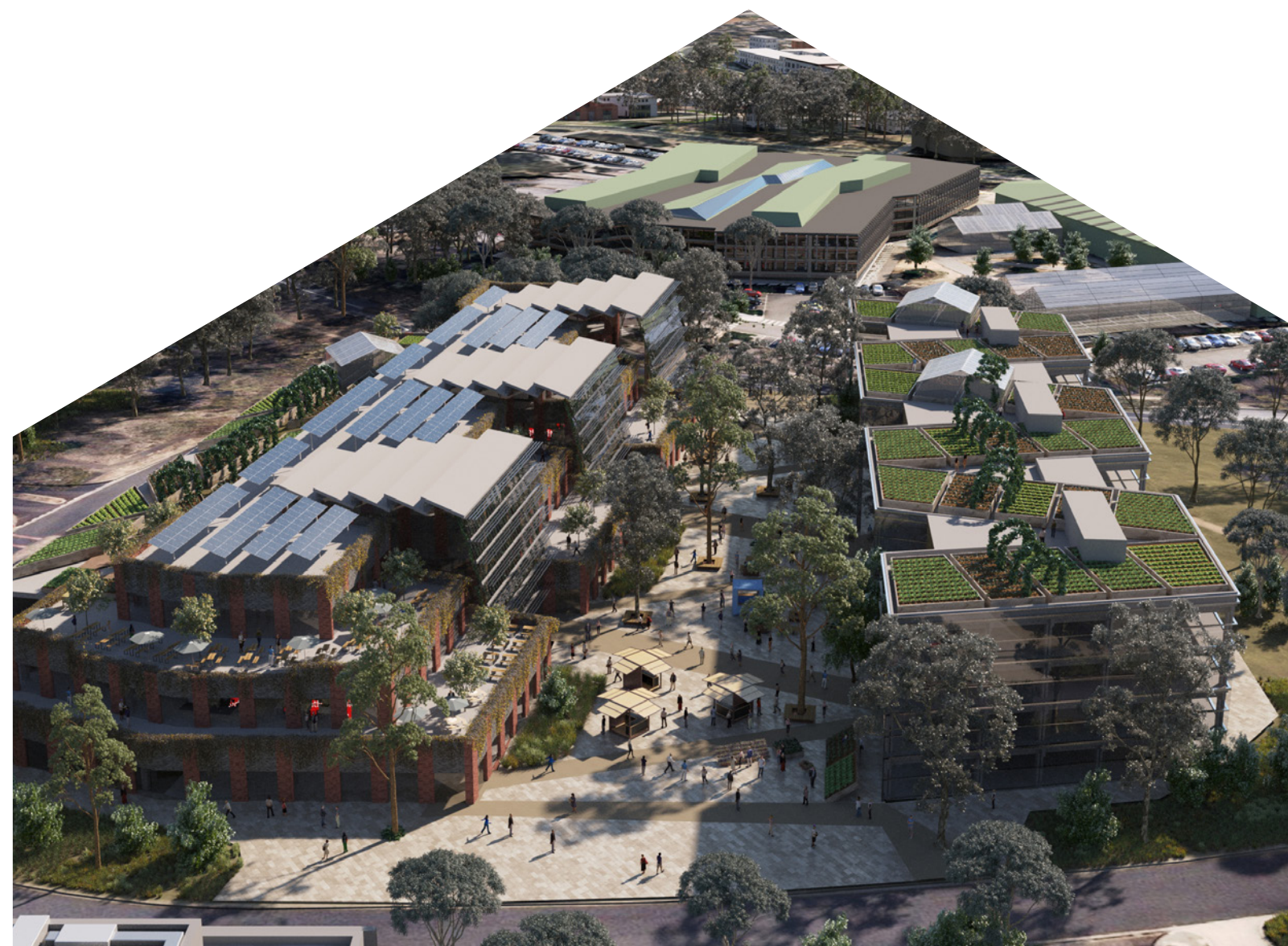
AFIC will be underpinned by a new purpose built state of the art facility at La Trobe University's Bundoora campus in Melbourne's north in Victoria. It will provide industry the opportunity to co-locate with leading La Trobe University researchers CSIRO National Food Innovation Hub.

AFIC will provide critical research, development and commercialisation infrastructure and capability designed to drive innovation and growth.

CSIRO and La Trobe will work with others to create a national nodal eco-system (AFIC Network) which will provide coordinated access to resources and capabilities across the Australian agrifood sector as well as growing important international import and export relationships.



LA TROBE UNIVERSITY AND CSIRO HAVE JOINED FORCES TO ESTABLISH A WORLD-CLASS DESTINATION FOR PARTNERSHIPS AND INVESTMENT IN AUSTRALIA'S AGRIFOOD SECTOR





## What is the Vision for AFIC?

AFIC will leverage the power of collaboration to create a more connected, productive and sustainable agrifood sector in order to deliver improved economic, environmental and health outcomes for Victoria and Australia.



### AFIC will:



Work with the sector to create a connected agrifood ecosystem which leverages translational research, increased collaboration and innovation to solve urgent challenges.



Enhance market leadership of Australia's agrifood industry, through the development of public policy and global trade relationships enabling existing industry to scale and new companies to succeed.



Create new skills and jobs in agrifood, including a digitally enabled future workforce and advanced manufacturing capability.





## Who are the AFIC Foundational Partners?



La Trobe University and CSIRO are working to be co-located together at the AFIC Facility, working together with industry to accelerate agrifood innovation and grow Victoria's reputation as a global destination for partnerships and investment in Australia's agrifood sector. The opportunity to co-locate within the AFIC Facility will provide industry with access to a range of distinct and complementary features and capabilities.



### CSIRO

CSIRO's worldwide expertise and reputation in agrifood and its current infrastructure and technology will play a critical role in delivering the AFIC, including through:

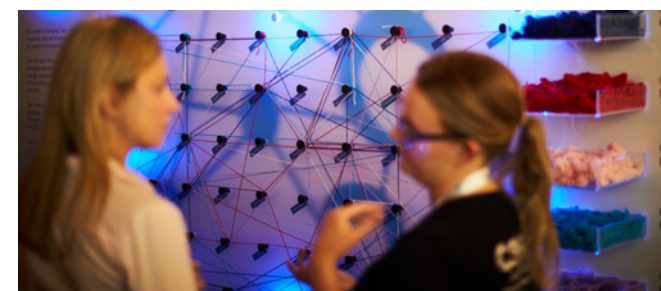
- Access to CSIRO's existing research and innovation capabilities and expertise across the agrifood sector which cover a range of diverse farming and food production research.
- Contribution of research platforms and infrastructure such as food lab facilities and small scale end-to-end food manufacturing.
- Opportunity to tap into CSIRO's partners across Melbourne's North and regional Victoria, including with industry research, education and government organisations.
- Access to CSIRO's international networks within the agricultural research space.



### La Trobe University

La Trobe University are a leader in the agriculture and food industry and will contribute to world-class research and workforce training delivered within AFIC including through:

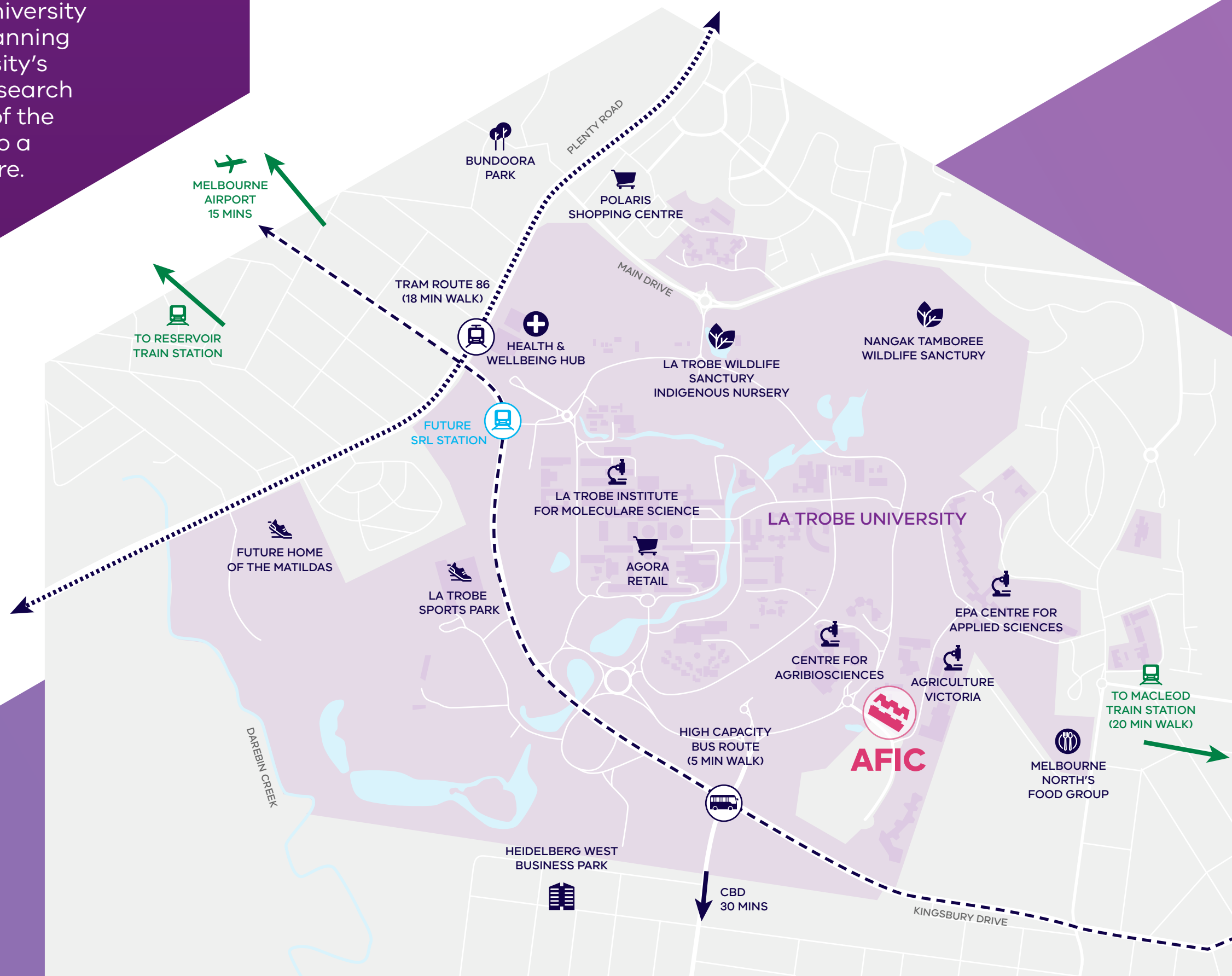
- Leading training and education capability in agriculture and food, including existing co-location with other world-class research institutes and centres.
- A vibrant Research and Innovation Precinct, providing innovation and incubation spaces for start-ups and SMEs on the Bundoora campus.
- Connection to Victoria's regions through regional campuses, which provide access to practical learning experiences and facilities, and enable on-farm research.
- Extensive connections to national and international industry partnerships across the food and agriculture space.



## Where will AFIC come to life?

AFIC will be located within La Trobe University Research and Innovation Precinct. Spanning 40 hectares in the heart of the University's 235-hectare Bundoora campus, the research and innovation precinct is a key part of the Bundoora campus' transformation into a world-class University City of the Future.

La Trobe's Research and Innovation Precinct is home to a number of world-class complementary research centres including AgriBio and La Trobe's Institute for Sustainable Agriculture and Food.



## How does AFIC connect to the broader AgriFood ecosystem?

AFIC will connect it to extensive complementary capabilities in the area, including Melbourne's Wholesale Fruit and Vegetable market, Epping Food Hub, the planned Melbourne Food Innovation and Export Hub, RMIT's Food Research and Innovation Centre and AgriBio. AFIC will be located at the gateway to Victoria's food bowls and will link to infrastructure across Victoria and Australia via the AFIC national nodal network.

AFIC will be part of the broader La Trobe National Employment and Innovation Cluster (NEIC), one of seven clusters identified in Plan Melbourne for focused jobs growth and strategic infrastructure investment, the Bundoora Campus is located within a key emerging transportation hub. It will be well connected with easy access to the future Northeast Link and Suburban Rail Loop, Melbourne Airport and other transport infrastructure.





## AFIC will be hosted within the La Trobe University City of the Future

La Trobe University is developing a world-class University City of the Future at its 235 hectare campus in Bundoora. The project will create and drive long-term jobs, innovation and economic growth through a \$5 billion investment over 10 years.

**\$5 BILLION  
INVESTMENT**  
over 10 years

**20,000+  
NEW JOBS**  
created over 10 years

**3,000+  
CONSTRUCTION  
JOBS**  
per annum

**\$3.5 BILLION**  
Gross Regional Product  
(GRP) over 10 years

### La Trobe University City of the Future

The University City of the Future will welcome the community, and local and international business onto the campus as a place to work, live, learn, socialise and stay healthy.

The University City of the Future will create:

- Education facilities for 40,000+ students
- Additional housing for 12,000 students, staff and private residents
- A major Health and Wellbeing Hub including a hospital and aged care facilities

- A new town centre for Melbourne's North – including new commercial, retail and cultural space
- A world-class Sports Park
- A transformed Research and Innovation Precinct
- Better transport links
- Environmental corridor and green spaces.



# How can AFIC help your business?



- Providing support for organisations to become more productive and competitive in global and domestic markets.
- Providing access to world-class research and pilot manufacturing infrastructure and capability in order to unlock new commercial opportunities.
- Facilitating training and education programs in order to meet future industry workforce needs.
- Providing a 'front door' and dedicated concierge service to catalyse connectivity across the agrifood value chain improving access to skills, investment and infrastructure.
- Presenting opportunities to co-locate within state-of-the-art work spaces in order to undertake collaborative projects and immerse employees within a culture of research excellence.

## R&D Facilities

Specialised translational research lab facilities and expertise.

## Co-located Partners

Co-located tenancies and incubator spaces for industry to immerse within a vibrant innovation ecosystem and collaborate with leading researchers.

## Shared Spaces

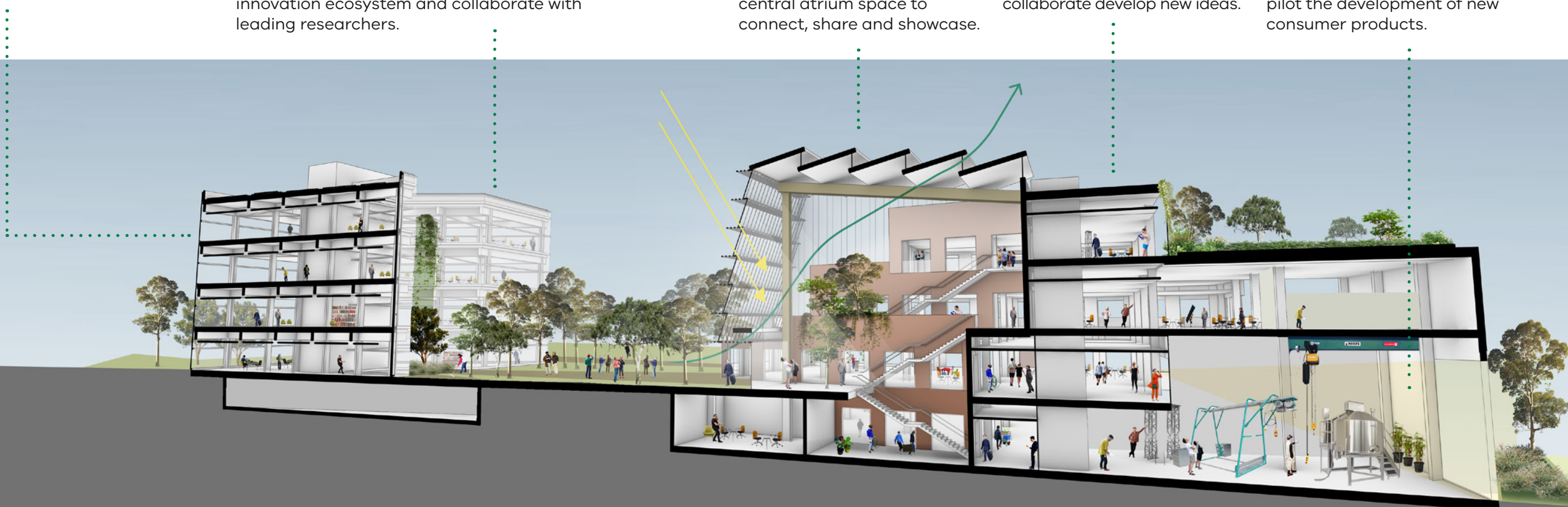
Including a commercial kitchen, a café and activated central atrium space to connect, share and showcase.

## Innovation Centre

Meeting, work and event spaces for industry to collaborate develop new ideas.

## End-to-end Manufacturing

Small-scale end-to-end food manufacturing facilities to pilot the development of new consumer products.





## What will AFIC specialise in?



With world-leading expertise in agriculture research, food science and nutrition, AFIC will deliver innovation to the food, feed, health and wellness industries for Australia's economic benefit into the future.

### Consumer centric

**Delivering innovation, food products and technologies** to secure future success and meet the needs of choosier consumers with capabilities in sensory, flavour and consumer sciences, decision analytics using new algorithms and machine learning.

### Health and wellbeing

**Improving the health of Australians through healthier foods** with world leading expertise in nutrition and health research, food safety, nutritional substantiation, and clinical studies.

### Innovation and translation

**Novel food production systems** delivering new business models and opportunities in regional Australia with capabilities in Precision fermentation, Synthetic biology, cellular agriculture and use of new omic tools and big data analytics, including to supercharge the innovation performance of SMEs through incubation and SME Collaboration Nation programs.

### Food manufacturing and value adding

**Transforming value** to position Australian producers and manufacturers at the forefront of the food revolution with new product innovations, waste to wealth through conversion of food loss, and growth of alternative plant protein industry including using latest digital technologies.

### Sustainable production

**Sustainable food production** to provide high-quality, health-enhancing premium food and feed to growing markets with world leading expertise in crop and legume sciences, livestock and aquaculture breeding, feed innovation and value chain analysis to create integrated solutions for sustainable diets.





## What benefits will AFIC deliver?

AFIC will deliver a world-leading agrifood innovation capability to help create a thriving and globally competitive sector. AFIC will support the agrifood sector to respond to key opportunities and challenges unlocking innovation, creating new products and solutions and accelerating economic growth.



### AFIC will enhance Victoria and Australia's market leadership in Agrifood

- Enable industry to pilot and scale new products locally, enhancing speed to market.
- Build on Australia's reputation as a leader in agrifood innovation.
- Attract multinationals, investment and increase Australia's share in export markets.



### AFIC will drive translational research and commercialisation outcomes

- Strengthen the connection between industry and researchers in order to address real-world challenges.
- Create synergies by connecting value chain partners from paddock to plate.
- Attract and retain specialised R&D capability.



### AFIC will create new skills and jobs in agrifood, driving economic growth

- Develop workforce capability required to meet current industry demand.
- Provide industry with opportunities for talent acquisition and upskilling for new high-value jobs in agrifood.
- Align leading education and training institutions to embrace industry innovation.



### AFIC Facility will be located within emerging agrifood and logistics hub in Melbourne's North

- Access to existing innovation and agrifood capability and an emerging transport and supply chain hub.
- Access connectivity to Victoria's regions and national agrifood ecosystem through precinct partner networks.
- Attract industry and investment to further support growth in Melbourne's North.



## How can you get involved?

Partnering with AFIC has a number of benefits for industry partners:



### Innovation Network

Partners are invited to join the AFIC Network. AFIC Network participants will have access to an Australia-wide training and innovation network that drives initiatives around food security, sustainability, packaging manufacturing and nutrition to deliver global competitive advantage.



### Innovation and Training Collaboration

Industry partners and subject matter experts can attend AFIC to undertake research, training or collaborative projects. Partners will have access to work and event spaces, the Innovation Hub and/or equipment and laboratories required to deliver the project.



### Co-location Opportunities

Industry partners may embed their organisations into AFIC enabling them to have access to state of the art infrastructure and world-class talent. Industry can co-locate at AFIC through the lease of office spaces and laboratories or through short term access agreements.



**PARTNER WITH  
AFIC AND HELP  
SHAPE THE FUTURE  
OF AUSTRALIAN  
AGRI-FOOD SECTOR**



## Contact us

### **Alison Angleton**

Director Strategic Partnerships  
and Research Precinct

✉ [a.angleton@latrobe.edu.au](mailto:a.angleton@latrobe.edu.au)

### **Ingrid Appelqvist**

Senior Principal  
Research Scientist  
Food Innovation Centre Lead

✉ [Ingrid.Appelqvist@csiro.au](mailto:Ingrid.Appelqvist@csiro.au)