



**LA TROBE**  
UNIVERSITY

# COMPREHENSIVE PROTEOMICS PLATFORM

[latrobe.edu.au/proteomics](http://latrobe.edu.au/proteomics)

The **La Trobe University Comprehensive Proteomics Platform** offers a suite of synergistic capabilities for the characterisation of biomolecules by providing access to specialised research expertise and infrastructure in the areas of mass spectrometry, structural biology, protein interactions and bioinformatics.

## MASS SPECTROMETRY

The platform has the capacity to isolate, detect, quantify and compare protein biomarkers in complex samples using the latest liquid and gas phase methods. It also offers quality control services for recombinant proteins and peptides.



## BIOMOLECULAR INTERACTIONS

We can characterize the native mass, stoichiometry and shape of biomolecules in solution using analytical ultracentrifugation, as well as the binding kinetics and thermodynamics of protein-protein and protein-ligand interactions using a range of techniques and instrumentation.

## STRUCTURAL BIOLOGY

This capability encompasses the determination of the 3D structure of peptides, proteins and biomolecular complexes using high field nuclear magnetic resonance spectroscopy and X-ray crystallography.

## BIOINFORMATICS

Bioinformatics supports all capabilities with core expertise in advanced experimental design, informatics, molecular modelling, high performance computing, data analysis, statistics and high capacity data storage.

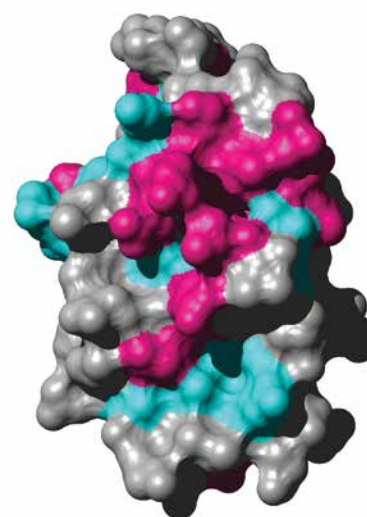
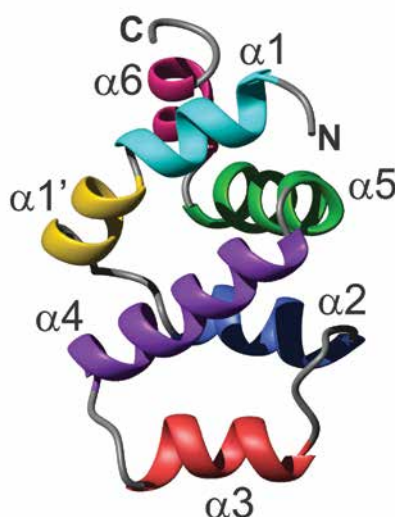
### Access

We work with all organisations through a variety of arrangements to meet your needs.

### Contact Us

A/Prof. Matt Perugini  
Platform Director

M.Perugini@latrobe.edu.au



[latrobe.edu.au/proteomics](http://latrobe.edu.au/proteomics)