



CAREER NETWORK UPDATE

OVERVIEW

- Aspire Early Offer Program
- Aspire partners
- Biomedical (Medical) Science rurality
- Cybersecurity outreach research
- Open Day
- Regional career practitioner conference
- Course updates & features
 - Education suite
 - Science at La Trobe
 - Biomedicine
 - Biological science

NEW HEALTH CLINICAL BUILDING NOW OPEN!

La Trobe's landmark \$82 million Health Clinic at Bundoora is open, and your students can tour it at Open Day in August!

Victoria's largest interdisciplinary university clinic, will train an additional 400 allied health professionals each year, offering community services across speech pathology, physiotherapy, psychology, podiatry, audiology and occupational therapy.

The clinical teaching building, is part of La Trobe's \$170 million investment in health innovation, which will deliver teaching, research and infrastructure to boost Australia's healthcare workforce by an extra 4000 professionals by 2030 in areas of need.

[Find out more](#)

BIOEMDICAL (MEDICAL) SCIENCE RURALITY

The Bachelor of Biomedical Science (Medical) is for rural and regional students who want to become doctors and practise in rural or regional areas.

Residency requirement: Applicants must have lived at a principal home address classified as MMM2–MMM7 (Modified Monash Model) for either:

- 5 consecutive years, or
- 10 cumulative years.

Ideally, applicants should have also completed Years 11 and 12 at a school located in an MMM2–MMM7 area.

Other selection criteria may also apply. If your students meet the remoteness criteria, encourage them to start preparing now.

[Find out more](#)

UPCOMING EVENTS

Aspire Webinar (Online)

Wednesday 8 July 2026
5 pm AEST

[Register now](#)

Experience La Trobe Melbourne (Bundoora)

Tuesday 30 June 2026

[Register now](#)

Regional Career Practitioner Conference

Wednesday 29 July 2026

[Register now](#)

Open Day

Melbourne (Bundoora) – 2 August

Shepparton – 9 August

Mildura – 12 August

Albury–Wodonga – 16 August

Bendigo – 23 August

[Register now](#)

[Learn more](#)



HELP STUDENTS SECURE AN EARLY OFFER VIA ASPIRE

La Trobe's Aspire Early Offer Program lets Year 12 students secure an early conditional offer to uni before finishing Year 12 — providing certainty and security during a high-pressure year.

The three Aspire streams recognise different strengths: community involvement, strong Year 11 results, and a demonstrated drive to make a future impact. Students can apply for every stream they're eligible for, so encourage them to check all three.

How you can support your students:

- Remind Year 11 students not to ease off, strong results can support an early conditional offer.
- Encourage volunteering or community service now, through an Aspire partner or any type of volunteering/community service.
- Help students identify which streams they qualify for — many meet criteria for more than one.
- Direct students to the Aspire webpage for stream-specific requirements, including Impact statements, Year 11 results, and school endorsement forms.

[Find out more](#)



ASPIRE COMMUNITY PARTNERS

We consider all past and present community impact that makes a positive difference, such as leadership, volunteering, family support or participation in your community

Volunteering with one of our partner organisations?

Submit details of your volunteering with your Aspire application and you will receive an automatic conditional offer* at La Trobe University. Our partners include:

- SES Victoria
- Scouts Victoria
- CFA
- Bendigo Health
- St Vincents De Paul (Vinnies)
- Little Dreamers
- St John Ambulance
- Awards Victoria – The Compass Award
- Duke of Edinburgh's International Award – Australia

[Find out more](#)

*The automatic conditional offers with our partners means that we are pleased to offer you (at minimum with us) a secured place or an alternate pathway at La Trobe as your Aspire early offer. It does not automatically guarantee the course preference/s listed in your Aspire application or the conditional offer due to some course caps and the early offer assessment ranking. Your Aspire application will be assessed accordingly.



LA TROBE UNIVERSITY JOINS THE 2050 ALLIANCE

La Trobe University has joined the 2050 Alliance, a new partnership of nine Australian universities committed to lifting national tertiary attainment to at least 80% of the working-age population by 2050.

The Alliance is focused on widening access to higher education for under-represented communities, particularly those in regional and remote areas. Together, the founding universities currently teach over 285,000 students across more than 65 campuses spanning inner-city, suburban, regional and remote Australia.

This signals continued and growing commitment from La Trobe to equity pathways, regional access, and support for students who may be the first in their family to consider university. It's a strong reminder to encourage students from all backgrounds that university is genuinely within reach — and that La Trobe is actively working to make that happen.

Keep an eye out for more updates as the Alliance's work develops.

[Learn more](#)



REAL-WORLD AI: FROM LA TROBE LABS TO QUEENSLAND FARMS

La Trobe University Distinguished Professor Wei Xiang has won a 2026 Financial Review AI Award, taking first place in the sustainability category for his work using AI to help farmers save water and energy.

Developed with ag-tech company Aglantis, Professor Xiang's smart irrigation platform replaces one-size-fits-all watering with precise, data-driven decisions tailored to each crop. Since launching in 2024, it has been rolled out across North Queensland farms covering up to 3000 hectares, delivering strong early water savings.

"The future of agriculture will be increasingly data-driven. By integrating sensors, AI and real-time environmental monitoring, we can support more resilient farming systems for Australia and worldwide."

AI-powered irrigation cuts water use by 20%, halves electricity costs, and reduces field checks — using solar sensors and a digital twin for real-time advice.

Professor Xiang directs the Australian Centre for AI in Medical Innovation and is the Founding Director of the Cisco-La Trobe Centre for AI and Internet of Things.

[Learn more](#)



CYBERSECURITY OUTREACH OPPORTUNITY

Discover Cybersecurity careers with La Trobe

Give your Year 9–10 students a head start in one of Australia's fastest-growing fields — at no cost to your school.

La Trobe University's free Cybersecurity Outreach Program is led by cybersecurity experts, researchers and trained student mentors, and is available to Victorian state secondary schools. Students discover that cybersecurity goes far beyond tech — connecting to law, business, psychology and design — opening their eyes to diverse, future-focused career pathways they may not have considered.

Delivered on-site at your school or at La Trobe's Bundoora or Bendigo campuses. The program includes three short anonymous surveys, supporting research into more inclusive cybersecurity education.

This study has received:

- Victorian Government Department of Education RISEC Approval (*Approved Protocol No. 25-12-792*)
- La Trobe University Human Research Ethics Approval (*Approved Ethics ID: HEC25346*)

All required parent/guardian/participant consent forms, official letters of invitation, and Department of Education approval documentation will be provided.

For expressions of interest or further information, please contact the research team:

latrobe.cyberconnect@latrobe.edu.au



[Learn more](#)





REGISTER NOW

UNIVERSITY

A DAY IN THE LIFE

See what uni life is actually like at Experience La Trobe. Join a day of workshops, classroom activities and facility visits in your study discipline of choice.



Experience La Trobe

Tuesday 30 June

La Trobe University, Bundoora



SCIENCE AT LA TROBE

COURSES IN SCIENCE

Help solve the biggest challenges facing humanity with a science degree from La Trobe. Take part in collaborative experiments, innovative projects and industry learning through placements with our partners.

At La Trobe, you'll learn in world-class labs, a wildlife sanctuary and the Centre for AgriBioscience — guided by industry experts and researchers rated well above standard in 15 scientific fields. You'll gain the skills, mindset and one-on-one mentorship needed to tackle climate change, drought, cancer and beyond.

Courses include:

- BACHELOR OF AGRICULTURE
- BACHELOR OF ANIMAL AND VETERINARY BIOSCIENCES
- BACHELOR OF BIOLOGICAL SCIENCES
- BACHELOR OF BIOMEDICAL SCIENCE
- BACHELOR OF BIOMEDICAL SCIENCE (MEDICAL)
- BACHELOR OF BIOMEDICINE
- BACHELOR OF SCIENCE
- BACHELOR OF VETERINARY NURSING AND TECHNOLOGY
- BACHELOR OF WILDLIFE AND CONSERVATION BIOLOGY
- DIPLOMA OF AGRICULTURAL SCIENCE
- DIPLOMA OF BIOLOGICAL SCIENCES
- DIPLOMA OF SCIENCE

WHAT COULD THE FUTURE HOLD

Now more than ever, scientists are the voice of reason we need. Learn from experienced academics in immersive learning spaces and graduate ready to solve the problems that face humanity.

- Deep dive into science – not only scientific concepts, but how scientists think critically, work collaboratively and share their findings.
- Train in high-tech labs and through interactive and authentic activities that prepare you for real-world situations.
- Put theory into practice through work placements and work integrated learning with our industry partners like CSIRO, Bayer Crop Science and more.
- Tailor your degree to your interests with your major, plus optional electives and open access majors and minors from other disciplines.





EDUCATION AT LA TROBE

COURSES IN EDUCATION

Be a teacher who can educate and inspire any student, with technology and data on your side. With La Trobe's network of diverse school placements, discover how to create learning spaces that are safe, diverse and passionate wherever you are.

A La Trobe education degree gives you the science of learning and the classroom skills to match. You'll complete diverse placements across Victoria, graduate ready for any teaching challenge, and choose from flexible pathways spanning early learning to secondary, community and outdoor education — here or overseas. Through the NEXUS program, you could get paid while studying to teach in rural and regional schools, as well as access to mentoring and professional development

Courses include:

- BACHELOR OF EARLY CHILDHOOD EDUCATION
- BACHELOR OF EDUCATION
- BACHELOR OF OUTDOOR AND SUSTAINABILITY EDUCATION
- BACHELOR OF EDUCATION (NEXUS)
- ASSOCIATE DEGREE IN EARLY CHILDHOOD EDUCATION
- ASSOCIATE DEGREE OF TEACHER EDUCATION
- DIPLOMA OF TEACHER EDUCATION
- DIPLOMA OF TEACHER EDUCATION (NEXUS)

WHAT COULD THE FUTURE HOLD

Our enhanced education courses give you the choice, flexibility and support you need to shape the future of the next generation.

- Study closer to home, with online, on-campus or blended study options available across many courses.
- Explore all levels of teaching before choosing your specialisation in our Bachelor of Education. Choosing a major in early childhood and primary, primary, or secondary education at the end of your first year.
- Earn while you learn in schools that need teachers the most with our employment-based Nexus program
- Earn while you learn in schools that need teachers the most with our employment-based Nexus program.
- Find your pathway by studying a Diploma or Associate Degree before transitioning into an accredited teaching degree with full credit.



HIGH EMPLOYABILITY

90% of our Teacher education undergraduates found full-time employment within four months of graduation.

^Quality Indicators for Learning and Teaching (QILT), 2025, Teacher Education (Undergraduate)

COURSE JOURNEY

IN EDUCATION AT LA TROBE

COMPLETED YEAR 12

- Meets ATAR: 70
- Meets subject prerequisites
- Any additional study prerequisites i.e CASPer test, LTU AFTA test

(Victorian Government requires students to meet a minimum Selection Rank of 70)

COMPLETED YEAR 12

- ATAR 50 - 69
- Meets subject prerequisites

COMPLETED YEAR 12

- Unscored
- OR
- ATAR under 40
- OR
- Vocational Major

DIPLOMA OF TEACHER EDUCATION

OR

ASSOCIATE DEGREE OF TEACHER EDUCATION

STAT TEST

- Successfully complete Year 12, complete test post secondary school

OR

TERTIARY PREPARATION PROGRAM (TPP)

**possible entry into Sem 2 2027 or Sem 1 2028

**Apply and transfer into preferred course (approx. 4 year duration including pathway)

EDUCATION DEGREE

- 1 year (Diploma degree)
- 4 years (Bachelor degree)

ATAR: NP[^]

VCE: Units 3 and 4: a study score of at least 30 in English (EAL) or at least 25 in English other than EAL.

Units 1 and 2: satisfactory completion in one of Maths: General Mathematics, Maths: Mathematical Methods or Maths: Specialist Mathematics or Units 3 and 4: any Mathematics

- Explore your options before choosing a major in early childhood and primary, primary, or secondary education at the end of your first year

- Study closer to your home and community, with this degree offered in Melbourne and every campus in regional Victoria.

- Get real-world experience through placements in metropolitan, regional and rural schools.

[^]NP: NOT PUBLISHED DUE TO NEW COURSE NAME AND STRUCTURE (ATAR GUIDE FOR LOWEST RANK = 70.15 IN PREVIOUS YEARS AS PER ATAR DISTRIBUTION REPORT)

*PLEASE NOTE THERE MAY ALSO BE OTHER PATHWAYS AVAILABLE, DEPENDING ON YOUR PRIOR EDUCATION PATHWAYS.

**CORRECT AT TIME OF PRINTING, PLEASE SEE THE LA TROBE UNIVERSITY WEBSITE OR CONTACT 1300 135 045 FOR THE MOST CURRENT



LA TROBE
UNIVERSITY

OPEN DAY 2026

Melbourne (Bundoora)

Sunday 2 August – 10:00am to 4:00pm

Shepparton

Sunday 9 August – 9:00am to 2:00pm

Mildura

Wednesday 12 August – 3:00pm to 6:00pm

Albury–Wodonga

Sunday 16 August – 9:00am to 2:00pm

Bendigo

Sunday 23 August – 9:00am to 2:00pm



REGISTER NOW

Register your interest to plan your day
latrobe.edu.au/openday



COURSE FEATURES

BACHELOR OF BIOMEDICINE & BIOMEDICAL SCIENCE

ENTRY REQUIREMENTS

ATAR:

Bachelor of Biomedicine

55.05 – Melbourne (Bundoora) Campus

Bachelor of Biomedical science

60.55 – Albury-Wodonga

59.05 – Bendigo

PREREQUISITES

VCE: Units 3 and 4: a study score of at least 25 in English (EAL) or at least 20 in English other than EAL.

WHY STUDY BIOMEDICINE OR BIOMEDICAL SCIENCE?

How does the human body function when it's healthy and when it's affected by disease? What are the underlying causes of disease and how can we improve their diagnosis and treatment? These are the questions you'll aim to answer as a biomedical student.

- Explore the molecular foundations of disease, researching conditions such as cancer, cardiovascular, infectious and neurodegenerative diseases – built on core studies in chemistry, biology and research methods.
- Specialise as you progress, with electives in anatomy, genetics, microbiology, biochemistry and physiology opening diverse pathways within the degree.
- Unlock postgraduate options in allied health – anatomy and physiology subjects create clear pathways into physiotherapy, speech pathology and more.
- Learn in world-class facilities at the \$100 million La Trobe Institute for Molecular Science (LIMS), one of Australia's leading teaching and research environments.

CAREER OPPORTUNITIES

Once you graduate you'll be prepared for diverse roles around the world, including possible roles in:

- Education
- Medical sales
- Medical administration
- Media and communication (medical)
- Biotechnology
- Pharmaceutical industries
- Hospitals
- Government departments



STUDENT SPOTLIGHT

"La Trobe is a very nurturing university and environment. La Trobe has provided an easy transition into university life – moving away from home can be overwhelming and I'm grateful for the support."

Abigail – Bachelor of Biomedical Science



COURSE FEATURES

BACHELOR OF BIOLOGICAL SCIENCE

ENTRY REQUIREMENTS

ATAR: 55.65 – Melbourne (Bundoora)

PREREQUISITES

VCE: Units 3 and 4: a study score of at least 25 in English (EAL) or at least 20 in English other than EAL.

ABOUT THE BACHELOR OF CYBERSECURITY

Turn your passion for biology into a diverse career. La Trobe's Bachelor of Biological Sciences builds strong foundations in ecology, genetics and microbiology — with practical labs and fieldwork from year one. Specialise with a major or double major, gain industry experience, and graduate with the analytical and communication skills science careers demand.

- Build skills in biology, chemistry, ecology and biodiversity, and explore the impacts of infection, epidemics and pandemics.
- Tailor your degree to your interests with your major, plus optional electives and open access majors and minors from other disciplines.

Choose from a list of core majors:

- Biochemistry
- Botany
- Ecology
- Genetics
- Human physiological sciences
- Microbiology
- Zoology

CAREER OPPORTUNITIES

La Trobe graduates have found work in lab and field-based settings, including private industry, research institutes, and local and state government organisations. Possible roles include:

- **Biological scientist**
- **Microbiologist**
- **Environmental consultant**
- **Biosecurity officer**
- **Geneticist**



ACADEMIC SPOTLIGHT

"At La Trobe, our researchers work collaboratively across disciplines to uncover the molecular and genetic mechanisms behind disease — driving innovative solutions for prevention, early detection and treatment, united by a shared vision of groundbreaking advancements, universally accessible and equitable healthcare."

Associate Professor Erinna Lee

Genetics lead, Understanding and preventing disease



TOP 200 FOR LIFE SCIENCES

We're ranked in the world's top 200 for life sciences.

^Times Higher Education (THE), 2026, Life Sciences University Rankings 2026





SUPPORT TO HELP YOU THRIVE

Well-being is just as important as success. La Trobe is a place brimming with culture and opportunities, but adjusting to uni has its challenges too. Don't worry — we're here to help.

We have comprehensive orientation and support programs to help you make a successful transition. Once you arrive, you'll have free access to services focusing on everything from study skills and disability support, to mentoring and mental health.

MAKE FRIENDS, LEARN THE ROPES, GET THE SKILLS

Our orientation programs are carefully designed to help you sow the seeds for a happy and successful student life.

- Orientation includes seminars, tours and social events to help you learn the basics and find your feet.
- Our La Trobe Leaders program connects you with experienced La Trobe students who know the ropes, get practical tips and find your feet in university life from day one.

ONGOING SUPPORT TO HELP YOU SUCCEED

Orientation is just the beginning free support programs for study skills and personal well-being are available throughout your degree:

- IT support
- Well-being services
- Career ready hub
- Learning support and programs
- Student advising
- Accessibility hub
- Financial health resources
- Indigenous student support
- Personalised support via ASK La Trobe
- and more!



STUDENT SPOTLIGHT

"There's a lot of support available on the campus, especially international support services, which gave me a really warm welcome since I first arrived on campus. They helped with my study and made me feel comfortable to get along with other domestic students"

Sophary – Bachelor of Business



Alex Sims

Director Domestic Student Recruitment

UNDERGRADUATE TEAM



Jemima Bowen
Melbourne Campus



Livio Sikora
Melbourne Campus



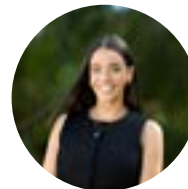
Jakob Lowry
Melbourne Campus



Zai Dashi Naw
Melbourne Campus



Justine Williams
Bendigo Campus



Rani Dorrington
Bendigo Campus



Carli Spence
Bendigo Campus



Elicia Thomson
Shepparton Campus



Jessica Chalmers-Borella
Albury-Wodonga Campus



Marcella Bulic
Albury-Wodonga Campus



Molly Keely
Mildura Campus



Ash Ryan
Mildura Campus

Connect with us

We're excited about the year ahead and supporting you and your students to find their dream course at La Trobe. For support, please contact: undergrad@latrobe.edu.au

Meet and connect with our team

Disclaimer: The information contained in this publication is indicative only. While every effort is made to provide full and accurate information at the time of publication, the University does not warrant the currency, accuracy or completeness of the contents. The University reserves the right to make changes without notice, at any time in its absolute discretion, including but not limited to varying admission or assessment requirements, or varying or discontinuing any course or subject. To the extent permitted by law, the University does not accept responsibility for any loss or damage occasioned by use of any of the information contained in this publication. For course information updates, please visit: latrobe.edu.au

La Trobe University is a registered provider under the Commonwealth Register of Institutions and Courses for Overseas Students (CRICOS). CRICOS Provider Code Number 00115M - TEQSA PRV12132; Provider Category: Australian University. Published by La Trobe University