



LIVING WITH DISABILITY
RESEARCH CENTRE

Quality Hospital Care for People with Intellectual Disabilities

Launch: 11th October, 2023

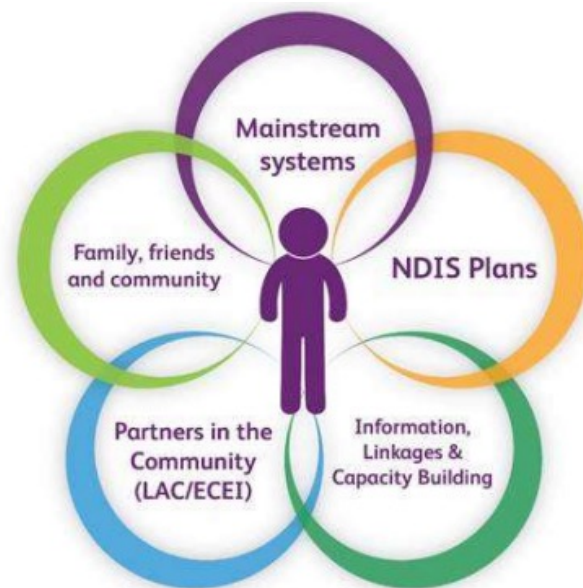
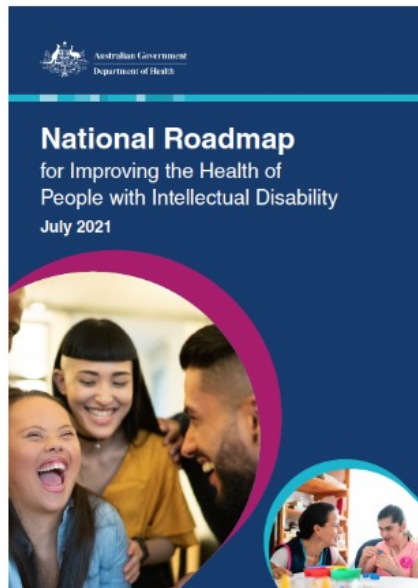
Professors Teresa Iacono & Christine Bigby

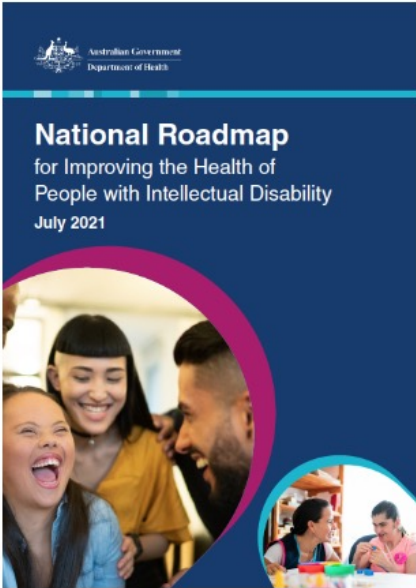
Overview

- Policy Context
- Research Context
- Training Resource Preview & Launch

Policy Context

- Australia's Disability Strategy 2021-2031
 - National Roadmap for Improving the Health of People with Intellectual Disability
- National Disability Insurance Scheme – ILC – Building Mainstream Capacity
- Disability Royal Commission findings and recommendations





Vision for an Inclusive Australia



Policy Context – Disability Royal Commission

- Key findings (healthcare)

- In comparison to people without disability, people with disability

- denied access to health care on the same basis
 - Worse health care outcomes and lower life expectancy

“We found people with cognitive disability have been and continue to be subject to systemic neglect in the Australian health system” (p. 77)

- Discriminatory attitudes and practices

- Devaluing their lives, unconscious bias
 - Diagnostic overshadowing
 - Failing to listen to people with disability and their families
 - Failing to provide necessary adaptations and supports



Disability Royal Commission Key Healthcare Recommendations



- Expand Intellectual Disability Health Capability Framework (The Roadmap) to Cognitive Disability
 - Rec 6.24 Improve implementation planning and coordination for the cognitive disability health capability framework (Dept. of Health & Aged Care)
 - Rec. 6.25 Expand the scope of health workforce capability framework to include all forms of cognitive disability at all stages of education and training (Dept. of Health & Aged Care)
 - Rec. 6.26 Expand the role of the Health Ministers Meeting to monitor health workforce capability development (annual reporting on progress of actions)
 - Recs. 6.27-6.29 relate to accreditation standards and curriculum, student clinical placements, specialist training and professional development

Disability Royal Commission Key Recommendation

National Centre of Excellence in Intellectual Disability Health

Recommendation 6.30 Expand the scope of the National Centre of Excellence in Intellectual Disability Health

The Australian Government Department of Health and Aged Care should expand the remit of the National Centre of Excellence in Intellectual Disability Health to include autism and other forms of cognitive impairment.



Tensions arising from Recommendation 6.3

- Specialist centre arose from research and clinical expertise in intellectual disability health and healthcare access; and advocacy by people with intellectual disability (Council for Intellectual Disability)
- Based on premises of specialised knowledge and expertise – are these generalisable to autism, dementias and other forms of cognitive disability?
- Reflects tensions across understanding and opinions regarding inclusion and segregation
- Does it account for the dynamic, varied, complex and often pressured healthcare systems and contexts?



Policy Context – NDIS

- Individualised funding packages
- Strengthening mainstream systems
 - Education
 - Employment
 - Justice
 - Housing
 - Aged care
 - **Health**



Information, Linkages Capacity Building Grant – Healthcare (2020)

Translation of Research: Hospital Experiences of People with Intellectual Disability

