

**COMPARISON OF THE STEAM VOLATILE OILS OF THE WOLLEMI PINE
(*WOLLEMIA NOBILIS*) WITH OTHER MEMBERS OF THE FAMILY ARAUCARICEAE**

JOE BROPHY^a, CHRIS FOOKES^b, PAUL FORSTER^c, BOB GOLDSACK^a AND MICHAEL WU^a

a. School of Chemistry, University of New South Wales, Sydney NSW 2052

b. CSIRO Division of Energy Technology, PMB 7 Bangor, NSW 2234

c. Queensland Herbarium, Mt Clout-tha, Toowong, Qld 4066

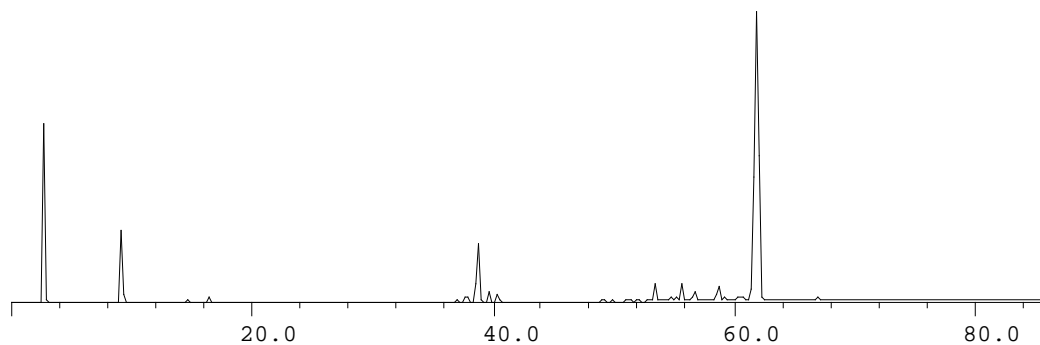
The conifer family Araucariaceae comprises the three genera, *Araucaria*, *Agathis* and *Wollemia*, and occurs only in the southern hemisphere, mostly in the Western Pacific region.

We have studied the steam volatile oils of approximately half of the known Araucariaceae with the aim of establishing relationships between *Wollemia nobilis* (the Wollemi Pine) and other members of the family.

We have found that there is a very diverse chemistry among these three genera linked only by the fact that they all contain mono-, sesqui- and diterpenes (with the latter usually predominating).

From a superficial examination of the oil chemistry, the closest member of the Araucariaceae to *Wollemia nobilis* would appear to be the New Zealand Kauri Pine, *Agathis australis*, though we have found that the major diterpene in *W. nobilis* is (+)-16-karene while it is reported to be (-)-16-karene in *A. australis*.

Glc trace of the steam volatile oil of



Wollemia nobilis