

# La News

La Trobe University Student Newsletter

Edition 7 | October 2009

## In this Issue...

Eco Update	1
Help La Trobe Save Water	2
Albury-Wodonga Teaching and Learning Symposium	3
La Trobe Furniture Giveaways	3
ARNOLD ANSWERS	4
Sport: Great year for the La Trobe Hockey Club	5
Library News	5
Careers News	6
<b>Albury-Wodonga</b>	
• Library updates	6
• 2009 Jonathan Mann memorial lecture	6
• Students assist with wetlands research	7
• Art exhibition display	7
<b>Bendigo</b>	
• Library updates	8
• Free screening for 'Mental Health Week'	8
• 'Gorgeous Voices' festival	8
<b>Bundoora</b>	
• Library updates	9
• Become a volunteer	9
• Community market	9
• Sport: Annual Ring Road Relay	9
• Counselling: Exam/Stress Management	10
• Helping Hands Carnival	10
• Mental health awareness speeches	10
• Menzies Theatre presents 'Ship of Fools'	11
<b>Mildura</b>	
• Mildura students take national stage	11
<b>Shepparton</b>	
• 133 <sup>rd</sup> Annual Shepparton Show	12
• Sounds of Orchestra Victoria	12



## Welcome to the October Edition

Well, we are fast approaching the end of the year, and it's a crazy time for most students – exams, assignments, reports and essays all need to be done! So if you need to take a break, have a quick flick through this month's *La News* to see what's going on around La Trobe!

Remember, *La News* welcomes student contributions, and suggestions or tips for articles can be sent to [studentengagement@latrobe.edu.au](mailto:studentengagement@latrobe.edu.au)

## Eco Update Student Opportunities to make La Trobe greener!

### ***EQUALITY, SUSTAINABILITY & PEACE (ESP)***

ESP evolved from the La Trobe University international development students' club, in Melbourne, Australia. ESP welcomes the involvement of all people who wish to contribute positively to the way in which equality, sustainability and peace are experienced around the world.

In 2008 ESP won The Greening La Trobe Award for the Bundoora Campus. Their idea was to build a small community garden to grow hardy crops such as tomatoes, herbs, and native plants.

In 2009, this garden is helping promote community awareness of organic gardening and is also teaching skills for growing vegies in people's own homes.

Go to [www.espeace.org](http://www.espeace.org) for more information.

### LA TROBE ENVIRONMENTAL ACTION GROUP

La Trobe Environmental Action Group is a group of committed and interested students who lobby to make both the University and the wider community more environmentally conscious. To get involved, contact the SRC Environment Officer [enviro@srclatrobe.org.au](mailto:enviro@srclatrobe.org.au)

### VOLUNTEER!

EnviroSMART has many opportunities for students to volunteer including:

- Conducting regular waste audits of different areas of the Melbourne (Bundoora) Campus
- Report and proposal writing
- Event organising
- Promotional work
- Data entry

If the course you are studying requires you to complete volunteer hours, come and complete them with us! You will gain some fantastic hands-on experience, help La Trobe University become more environmentally friendly and hang out with other like-minded people, drop us an email at: [envirosmart@latrobe.edu.au](mailto:envirosmart@latrobe.edu.au)

## Help La Trobe Save Water!

As we begin to enter the hot and dry season, water usage (more specifically, non-usage) becomes an important issue. With terrible drought nation-wide and global suggestions that future wars will be fought over water, everyone is aware of the importance of their precious resource.

As part of the greater Melbourne community La Trobe University recognises its responsibility to water conservation,

taking measures in its landscapes and buildings to minimise water use and also to recycle water. Since its development in the 1960s, La Trobe University's Melbourne (Bundoora) Campus has featured a lake and moat system used to collect stormwater run off which is used to irrigate the University's playing fields, gardens and lawns.

Rainwater tanks have been installed at the Eagle Bar, Maintenance and some of the Science, Technology and Engineering buildings.

The water is used for activities such as car washing and flushing toilets. Menzies College have installed water-saving showerheads, while Glenn and Chisholm Colleges are investigating similar water restricting devices for future installation. Bathrooms in some areas of the University have installed water flow restrictors.

### Tips for saving water

- Report and/or fix leaking taps.
- Take shorter showers.
- Don't leave the tap running when you wash dishes. A running tap wastes 14 litres of water per minute.
- Next time you're replacing your washing machine or showerhead, only purchase equipment with the AAA rating.
- Wait until your dishwasher and your washing machine are full before washing.
- Use native plants in your garden, they require less watering. If you have the means, use a tank for collecting rain to water your plants.

### Reporting water leakage/wastage

Got a leaky tape in your office kitchen? Is the toilet in the bathroom continually running? Report it! It's easy! Just follow these simple steps:

1. Go to the [Maintenance](#) website
2. File a [maintenance request](#)
3. For urgent jobs, where large quantities of water are being lost, phone: 9479 2017.

## Albury-Wodonga students strut their stuff



*Above: Artist Paul Allen*

The students of the Graduate Diploma of Education (Prep-12) have recently delivered their highly successful student-led Teaching & Learning Symposium at the Albury-Wodonga campus.

The three-day event, from September 7th – 9th incorporated keynote speakers and presentations on contemporary educational practice and the future directions in education, particularly in relation to the emerging National Curriculum. Presentations were made that related to a variety of educational topics in the Arts, English, Humanities, Mathematics and Science.

The P-12 students were responsible for all aspects of the Symposium in the planning, organising, promoting and implementation phases. They were also required to present a paper on a contemporary teaching and learning issue, which was peer-assessed, thereby introducing the students to a further means of assessment that they might consider using in their own teaching.

Students also exhibited artwork and presented performance pieces that portrayed their educational journey during their studies. P-12 student, Paul Allen (pictured), created a striking art piece incorporating small portraits of all 74 students in the P-12 cohort, including a carved portrait of one of the students who is blind. The student Art Exhibition

will remain on show in the David Mann Library until October 22nd. According to P-12 student, Loretta McNaught, "It's such an exciting time to be joining the teaching profession. With the pending implementation of the National Curriculum, teaching and learning are progressing in an innovative direction. Our challenge as new teachers will be to inspire students to think imaginatively in order to develop creative solutions for the problems of the future."

"The Symposium has resulted in excellent educational outcomes. The students have not only demonstrated highly advanced organisational, communication and problem-solving skills during the planning and conduct of the Symposium, but they have also explored current educational issues in a context that has provided an opportunity for much deeper learning. This enhancement of their knowledge and skills will stand them in good stead in a variety of ways as they move forward into their professional teaching careers," stated Dr Keamy, from the Centre for Regional Education at the Albury-Wodonga Campus.

To listen to a related radio interview with P-12 student and Symposium media spokesperson, Loretta McNaught, visit:

[http://blogs.abc.net.au/victoria/goulburn\\_murray\\_breakfast/index.html](http://blogs.abc.net.au/victoria/goulburn_murray_breakfast/index.html)

## La Trobe Furniture Giveaways

### First Fridays Furniture

First Fridays Furniture (FFF) is a program developed by EnviroSMART and the Maintenance department to recycle furniture within La Trobe University and the surrounding community.

Currently, on the First Friday of every month the Furniture Shed is open to La Trobe staff and students between 4:30pm and 5:30pm. Staff and students may take the furniture for personal use or use within the University itself. FFF comes from the idea that "One person's trash is another person's treasure". The University's Maintenance Department are often asked to remove unwanted furniture

from all over the campus. Furniture that is in good condition gets taken to the Furniture Shed and made available to staff and students through the FFF program.

**Please note:**

- All furniture is FREE!
- Furniture is not allowed to be re-sold under any circumstances
- Items that are for re-use within the University cannot be delivered

**Furniture Shed tips**

- If you want a swivel chair, get there early
- Bring a measuring tape
- Bring friends - they can carry things for you!
- If you're planning on taking something large (desk, filing cabinet, couch) try and organise a trailer, ute or van or at least clean-out your car the day before

The Furniture Shed's contents are usually made up of desks, chairs and filing cabinets but occasionally there will be an old printer, fax machine or photocopier - it's the luck of the draw!

See the [Furniture Shed location map \(PDF 1.42MB\)](#).

Opening of the shed will be as follows unless otherwise specified. Open the following Fridays:

- 6th November
- 4th December

**What do you think of this month's La News?**

What do you think of this month's newsletter? Can you make any suggestions or comments on it's readability and accessibility? We would appreciate your feedback for future editions.

Email us at: [studentengagement@latrobe.edu.au](mailto:studentengagement@latrobe.edu.au)

**ARNOLD ANSWERS!**

*Hi Arnold,*

*I am really lacking in motivation at the moment, and keep hitting walls when I go to do some work. Any advice? - Pete*

Hey, Pete!

I am yet to meet a student (or academic, for that matter) that has not had the same problem. I suffer constantly from procrastination and get severe cases of the 'can't-be-bothered's'. To be honest, I don't think there are any specific ways to counter this that works for all students – different things motivate different people, and some people work better under pressure. I guess one thing to consider is that procrastination is not always that bad. In fact, it can be productive. Refreshing you mind and getting 'out of the zone' for a day or two can help you get some perspective on what needs to be done.

Personally, I find doing something completely different and not even thinking about an up-coming assignment can help me when I get stuck. Of course, this is only useful if time allows.

I guess the main thing to remember is University is about learning to learn, and finding ways to overcome your roadblocks to serve you better in the future. Try different things and see what works. Good luck!

\*SQUARK\*

**ASK ARNOLD!**

Arnold is your campus oracle, possessing the knowledge and wisdom needed to answer all your questions about university life. Whether it is finding out how to start your own student group, how to get the most out of lectures, or where to get the best coffee on campus, Arnold is the man... err... bird!



Email Arnold at [studentengagement@latrobe.edu.au](mailto:studentengagement@latrobe.edu.au) and your answer will appear in the next edition of La News. (Arnold is an actual student!)

## Great Year for the La Trobe Uni Hockey Club

La Trobe University Hockey Club had a great season in 2009, with a heap of new players, great social events and success on the field. "It was fantastic to see so many new faces at the club this year and to have such popular social functions" - Social Co-ordinator Morgan Jenkins.

The club fielded competitive teams in both the men's and women's competitions. This season saw women's teams in State League 3, Metro 1 and Metro 3, and men's teams in State League 5, Metro 2 North and Metro 2 West. The women's teams did very well, with the women's State League 3 side only just missing the finals and the women's seconds making the finals only to lose in a cliff hanger. Women's hockey at the club has never been so strong and with many new students, including new international students, the teams are in great shape.

As well as having great success on the field in 2009 with the women, the men had a stellar come back year. The men's State League 5 team won the Grand Final, whilst the men's 2's and 3's only just missed out on their Grand Finals. The club continues to be a great place for La Trobe students to come along and make life-long friendships. This year has also seen the hockey club take significant steps towards returning to hockey fields on campus at La Trobe Bundoora, and with a robust business case about to come off the printers we hope that it will not be to long before women's and men's hockey teams can once again be playing on the grounds of the University.

The club has also entered a mixed team and a women's team in Summer Hockey for this year. Summer Hockey caters for all level of hockey skill from the beginner to the more experienced and it is a great way to keep a bit of fitness and have some fun over summer.

**For more details please contact Sarah Dowling,  
 Secretary of La Trobe University Hockey Club at:  
[saremacc@hotmail.com](mailto:saremacc@hotmail.com)**



*Above: Premiers - La Trobe University Men's Hockey Team 2009*

### LaTrobe University Library



#### Library blog gets a makeover

Have you checked the Library blog recently? It has a fresh new look in a more user-friendly platform. Posts are grouped by 'Categories' making resources on particular topics easier to find. You can see a longer list of recent and popular posts. We would love to get your comments, questions, suggestions and feedback - leave a comment on the Library blog today!

#### Need a document that's not held in the Library?

As a trial during second semester, the Library is providing access to the Document Delivery Service for undergrads. This service has previously only been available to postgraduate students and staff. You can use it to access materials *not held* at La Trobe University Library such as photocopies of specific journal articles (not entire journals), chapters out of books, reports and conference proceedings.

**More information can be found at:**

[www.lib.latrobe.edu.au/document-delivery/](http://www.lib.latrobe.edu.au/document-delivery/)

## CAREERS NEWS

### Presenting for Success

Have you ever wondered how you're supposed to behave when you enter professional employment but have been embarrassed to ask? Maybe you think you know....but do you? Little things can make a huge difference in the impression you make at interview or when you start your new job. Do yourself a favour and check out "Presenting for Success", a series of five short videos that are now available on the Careers and Employment website at [www.latrobe.edu.au/careers](http://www.latrobe.edu.au/careers). Produced by a professional film-maker using La Trobe students as actors, they are **entertaining as well as useful!**

### Just about to finish your degree?

Let the experts in Careers and Employment help you as you get ready for the next stage in your life. Not only do we advertise jobs of all types, but there's also heaps of information on our website [www.latrobe.edu.au/careers](http://www.latrobe.edu.au/careers) about looking for work, writing resumes and preparing for interview. If you want all that information in one spot, you can get a copy of The Essential Careers Guide for \$5 by calling in to the careers office at your campus or by emailing [careers@latrobe.edu.au](mailto:careers@latrobe.edu.au).

### Guest talk for international students

If you are an international student who is thinking about staying in Australia after you finish your degree, put Tuesday 13th October in your diary. Jensen Ma, an immigration lawyer, will be speaking about "Finding Work in Australia" at 12pm in the Undercroft Lecture Theatre at the Bundoora campus.

### Contact us:

Phone: 03 9479 2459 (Bundoora – main line)

Bundoora: Ground Floor, Peribolos East

Bendigo: Student Support Services Centre

All other campuses: contact [careers@latrobe.edu.au](mailto:careers@latrobe.edu.au)

Website: [www.latrobe.edu.au/careers](http://www.latrobe.edu.au/careers)

## Albury-Wodonga News and Events

LaTrobe  
University  
Library

Albury-Wodonga

### Growing collection of e-books in your Library



The Library now has several thousand e-books and the collection is growing rapidly. Just type your search term into the search box on the Library homepage and select 'e-books' from the drop down list. You can also check the new titles that come in each week under the 'New Titles' list linked from the Library homepage at:

[www.latrobe.edu.au/library](http://www.latrobe.edu.au/library)

## 2009 Jonathan Mann Memorial Lecture

Students are invited to attend this lecture on Thursday 15 October at 6pm in the Main Lecture Theatre, Building 6, Albury-Wodonga Campus. The topic, presented by Mr Joe Ross, will be 'Changing ways for changing country - engaging Indigenous expertise in Australia's response to climate change'.

The presentation will focus on the ways in which Indigenous Australians have been contributing to sustainable land use and ecosystem management over many years. It explores the idea that Indigenous knowledge of Australia is an imperative part of helping to restore the health of our country. The lecture will be followed by a panel discussion with Gary Murray (Victorian Tribal Council) and Gary Foley (Indigenous Australian activist, academic, writer and actor). Refreshments will be served following the lecture.

<http://www.latrobe.edu.au/aw/events/public-lectures>

**RSVP is essential as limited places are available**

**Phone: (02) 6024 9820**

**Email: [oad.aw@latrobe.edu.au](mailto:oad.aw@latrobe.edu.au)**

## Albury-Wodonga Students Assist with Wetlands Research

A group of second year students and staff from the Department of Environmental Management and Ecology at La Trobe University Albury-Wodonga recently travelled to Bottle Bend Lagoon near Gol Gol State Forest on the Murray River, just upstream from Mildura. The students were assisting researchers from The Murray-Darling Freshwater Research Centre (MDFRC) to set up trial plots of potential management treatments for acidified wetlands. "Acidification has become an ever-increasing problem during the prolonged drought. The water in the Bottle Bend lagoons has become much more acid since 2002. It now has a pH similar to lemon juice, leading to wetlands that are almost lifeless," stated Dr Mark Fraser, project leader from MDFRC Wodonga.

Todd Hunter, one of the La Trobe students, was shocked by the level of degradation and was pleased to be helping with this inaugural trial. "It was a great learning experience to be out in the field and I now also have a much deeper understanding of the chemistry involved in these processes." Todd said.

Dr Fraser explained that the wetting, drying and rewetting cycle that has occurred has activated chemical processes in the sulfidic sediments which released acid into the wetland. "We had undertaken the laboratory work on this, so we were ready to set up field trials in the lagoon to test how different approaches can help minimize acidity," stated Dr Fraser.

The students helped to peg out 120 small trial plots above the current water line at the lagoon and treated each plot with one of five management strategies. The treatments included: planting with cumbungi, phragmites or old man salt bush, with or without pre-digging and subsequent mulching; deep ripping of plots; and application of agricultural lime, ash or biochar. The plots will be monitored and the most successful management strategies will be developed for larger scale efforts to protect inland waterways vulnerable to ecologic damage from sulfidic sediments.

This project, the first of its kind in inland Australia, is funded by The National Water Commission, the NSW Murray Wetlands Working Group (NSW MWWG) and La Trobe University. The results of the new trials will directly inform management of inland wetlands.

**For further information, please contact Dr Mark Fraser on 0488 491 860.**

**For further media reports on this project, visit:**

<http://www.abc.net.au/rural/content/2008/s2664794.htm>



*Above: Albury-Wodonga students pegging out a plot*

## Art at its best! P-12 Education students display

### David Mann Library Albury-Wodonga

The Art Exhibition of the student-led Teaching & Learning Symposium at the Albury-Wodonga campus will be on show in the David Mann Library until October 22nd. The art works represent the individual educational journeys of the Graduate Diploma of Education (Prep-12) students during their studies this year.

Each work has a corresponding written dialogue detailing the student's journey and the choice of medium used. The dialogue enables the viewer to read the inspiration for the piece from the students' own point of view. Art works are diverse from paintings to models to interactive. Overall, the pieces are insightful examples of the rigor and student commitment for educational excellence.

**See page 3 for more details about the display.**

## Bendigo News and Events

**LaTrobe  
University  
Library**

Bendigo

### Is there a book you think the Library should have?

You can request that the Library buy a specific book by going to [www.lib.latrobe.edu.au/forms/purchase-request.php](http://www.lib.latrobe.edu.au/forms/purchase-request.php) and filling in the details.

Be sure to check the catalogue first though – we may already have it!

You can also keep up with new titles that come into the Library each week via the 'New Titles' link on the Library homepage at:

[www.latrobe.edu.au/library](http://www.latrobe.edu.au/library)



## Gorgeous Voices Festival Fundraiser- Launch

Join us at Eaglehawk's Star Cinema to celebrate the start of the 3<sup>rd</sup> GORGEOUS VOICES FESTIVAL on Sunday 11<sup>th</sup> October 1.30pm at Star Cinema, Bendigo.

Together we will watch the screening of *Blessed*, the new Australian film that is gathering awards and rave reviews.

Afternoon tea will be provided. Door prizes also up for grabs!

**Tickets: \$15.**

**For bookings contact Deanna on 0409 770 964**

## Free Screening for Mental Health Week

The NDCO (National Disability Coordination Officer) Program Region 15 presents :

### THE SOLOIST (M) 113m

Star Community Cinema

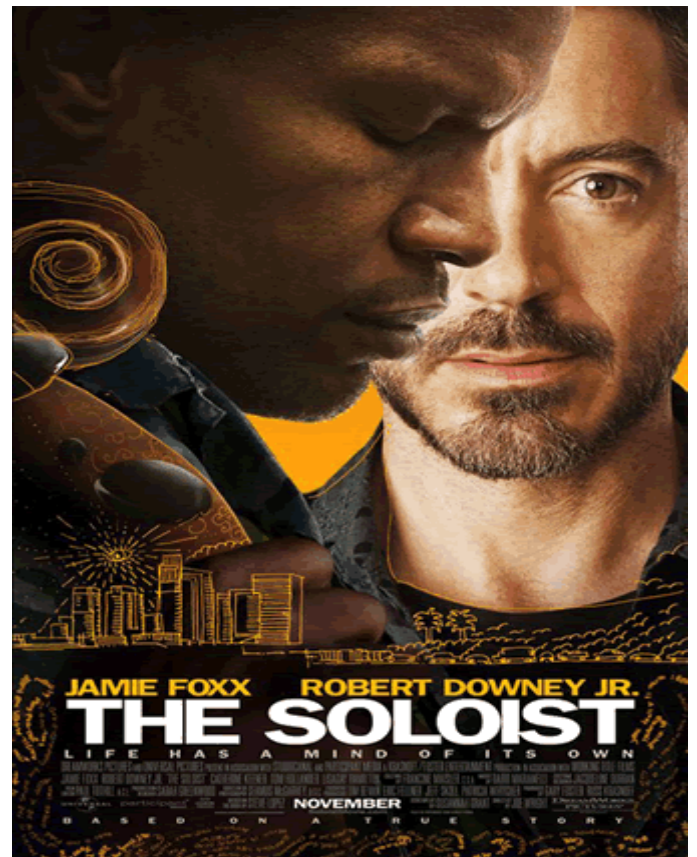
Friday, October 9th from 6pm

Limited places.

*"An emotionally soaring drama about the redemptive power of music. A journalist discovers a former classical music prodigy playing his violin on the streets of LA. A unique friendship is formed, one that transforms both their lives."*  
 Director Joe Wright, USA

**\*Bookings essential**

**Phone (03) 5446 2025**



## Bundoora News and Events

LaTrobe  
University  
Library

Bundoora



### Library Redevelopment

Want to find out what is happening with the Library Redevelopment Project at Bundoora? What will the new areas look like? What's moving where? What new spaces will there be? How many new seats for students?

You can find plans, images and details about this major building project at the new Project website. Send us a comment or question and we will add your questions and the answers to the site!

[www.lib.latrobe.edu.au/bundoora/building/moving.php/](http://www.lib.latrobe.edu.au/bundoora/building/moving.php/)

### Become a Volunteer and Make a Difference

Do you have an interest in sharing your knowledge to support learning? Would you like to help young people in the City of Whittlesea achieve their education goals? Are you able to tutor young people in Maths, Science and English? Then become a volunteer tutor with Kildonan's after school homework help program!

For more information, please contact Tori on 8401 0120

<http://kildonan.unitingcare.org.au>

### Community Market at Melbourne (Bundoora) campus

Held EVERY Sunday on campus at La Trobe University Bundoora car park 2, from 9 am -1 pm. Come along and experience over 120 stalls under the gum trees! Free parking. No dogs.

### La Trobe Sports Centre's - 'Annual Ring Road Relay'



Above: Passing the baton at the 'Ring Road Relay'

In conjunction with *WALK ON YOUR LUNCH BREAK*, the 'Annual Ring Road Relay' is a running relay race to be held on **Thursday 15th October, from 12-2pm**. Challenge yourself and three team-mates over the gruelling 2.7 kilometre circuit around the Bundoora La Trobe University Campus.

If running is not for you, why not enter *WALK ON YOUR LUNCH BREAK*? This is a great opportunity to get active and all proceeds will be donated to support Oxfam.

The cost of registering a team for the 'Ring Road Relay' is \$16, and *WALK ON YOUR LUNCH BREAK* is \$4 per person.

To register for either event simply complete a registration form at the sports centre reception. Call 9479 1537 for any inquiries. It's a great opportunity for bragging rights!



## COUNSELLING SERVICE

### Offering two sessions in October:



#### ‘Exam Success’

This two-part workshop will explore strategies for making your exam experience a success including effective preparation, coping with anxiety and on-the-day nerves.

**Presented by: Mary McMahon**

**Mondays from 10:15 – 11:45 am**

**12th and 19th of October (2 sessions)**

**\* Booking required**

#### ‘Stress Management’

Stress is inevitable in life, but a student’s life need not be too stressful. Come and join other students to better understand how stress can impact you and your studies.

Choose from a range of strategies aimed at helping you manage stress better.

**Presented by: John Laidlaw**

**Thursdays from 2.00 - 3.30 pm**

**Starting October 8th, 15th, 22nd & 29th (4 sessions)**

**\* Booking required**

**Email: [counselling@latrobe.edu.au](mailto:counselling@latrobe.edu.au)**

## Helping Hands Carnival

An event to raise awareness for the Cancer Council of Victoria is being held on 22nd October 2009 from 6pm till late at the Eagle Bar at La Trobe University Bundoora Campus.

The activities of the event include games, fairy floss, snow cones, a BBQ, drinks and more. Games include High Striker, Tic-Tac-Toe and raffles will be drawn between 7pm – 10pm.

Entry is free but participants have to purchase the vouchers to participate all the activities such as games or purchasing of food such as Fairy Floss, Snow Cones, and the BBQ. Each voucher costs \$10 and also entitles you to one raffle draw. The more vouchers you buy, the higher chance you have of winning a prize. Vouchers can be purchased on Wednesday October 7th in the Agora at the Bundoora campus, or on the night.

The funds raised will go towards:

- Research into the methods of preventing, diagnosing and treating cancer.
- Community and professional education programs in cancer prevention, detection and management.
- Patient and family support services, such as telephone counselling.

## Mental Health Awareness Speeches

*Mental Health Awareness at La Trobe University speeches - with a focus on the Indigenous community will be presented by Jack Bulman, CEO of Mibbinbah and Jo Abbatangelo, Social Inclusion Program Manager at Beyond Blue.*

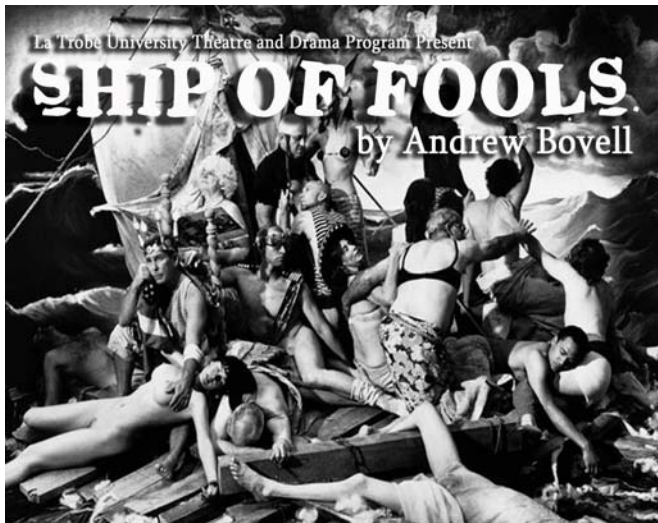
**Wednesday, 14th October**

**Western Lecture Theatre 3**

**2:00-3:00 pm - speeches**

**3:00-3:30 pm - Q&A and discussion time**

## 'Ship of Fools' at Menzies Theatre



**The *Ship of Fools* will open in Menzies Theatre on the Bundoora campus and will run from 13th – 17th October at 7pm each night.**

Andrew Bovell's play: *The Ship of Fools* turns the mythological Ship of Fools into a medieval journey for a new dark age in Australia, blending a tale of 15th century events in the city of Basle with a linked story of eight unemployed dole bludgers, summarily rounded up and sent into the desert outback on a Government 'work for the dole program'.

Opening Night on the Tuesday will be followed by an after party with complementary wine and cheese. Following the Wednesday performance there is a Q&A with the cast and director.

The play is mounted by third year drama students as part of the La Trobe Theatre and Drama program.

Tickets: \$12 - full  
 \$8 - concession  
 \$5 - 1<sup>st</sup> year drama students.

**Bookings: 03 9479 2342**

**More info: [www.latrobe.edu.au/drama/news](http://www.latrobe.edu.au/drama/news)**

## Mildura News and Events

### Mildura Students Take National Stage



Above: SIFE students Anthony Hall, Jay Smith, and Kirsty Duncan

Three Mildura La Trobe University students recently presented their community projects at a national competition held in Sydney. The projects cover the areas of environmental, educational and financial literacy.

The three students, Jay Smith, Kirsty Duncan and Anthony Hall were among three hundred students from twenty universities from around Australia, who presented their SIFE community projects to not only various panels of judges, but their peers. SIFE stands for Students in Free Enterprise. Universities around Australia, including La Trobe University, have SIFE teams which are made up of students and mentor/advisors. Students are encouraged to join the team and take up ownership of community projects.

Kirsty Duncan's project is called the HSBC Financial Literacy project. It is geared towards enhancing the financial literacy of young aboriginal students in the Sunraysia region, closing the education disparity experienced between Commealla's indigenous and non indigenous students. It is also hoped to improve attendance rates of students and therefore the student's grades.

SIFE is unique because judges for the competition are Chief Executive Officers, Managing Directors, Board Directors and Human Resources Managers. They come from leading and well known companies like Fonterra, Coca Cola Amatil, Heinz, HSBC Banking, Qantas and Woolworths to name a few. The judges form panels to which the students present their projects.

“SIFE Nationals offer the ability to meet and interact with a variety of people from diverse backgrounds, see other SIFE projects in Australia that are operated by university students: giving us inspiration for future projects, and seek possible career/job opportunities by interacting with employers from some of Australia's biggest companies.” said Kirsty.

To find out more about SIFE, check out the website at:

<http://www.latrobe.edu.au/sifemildura/>

## Shepparton News and Events

### Catch the Sounds of Orchestra Victoria

Orchestra Victoria is proud to present this opportunity to experience the wonders and delights of live orchestral music to all residents in the Shepparton region. Audiences will be spellbound by a beautiful program of romantic music including Ravel, Tchaikovsky, Saint-Saëns, Dvorák, Fauré and Kodaly.

The event is to be held at Eastbank Centre, 70 Welsford St, on Monday 26th October 2009 at 6.30pm. Admission is free however **bookings are essential**.

For further information please contact the Riverlinks  
Box Office on: 03 5832 9511.

### Visit the 133rd Annual Shepparton Show

The Shepparton Show will be held at the Showgrounds, High St, on Friday 9th and Saturday 10th October between 9am and 9pm. Highlights this year include animal judging, woodchop events, Code One Police rock band, Whipstars minibikes display and a sideshow alley.

For more information - contact the Showgrounds office  
on 03 5821 4677.

### Submit an article

Students and staff are welcome to submit articles.  
The next cut of date is: Tuesday 27th October.

Email: [studentengagement@latrobe.edu.au](mailto:studentengagement@latrobe.edu.au)