

## Welcome to the NEW Student News: La News!

### EXAMS ARE OVER!



Congratulations! Time to have a break from the late nights, the coffee/caffeine drinks, the midnight snacks, and your head in the computer screen or in the books! Go and enjoy the culmination of your exams (at least for this semester, anyway!)

Welcome to the July edition of the Student News. What this newsletter aims to do is cover the necessary university news, important announcements and opportunities on campus relevant to you.

Universities offer more than just degrees and this newsletter aims to introduce students to the wider university community available to them. The newsletter acts as a bridge between LA TROBE and YOU, letting you know about the “goings-on” throughout the Uni!

We welcome student contributions, and suggestions or tips for articles can be sent to:

[studentengagement@latrobe.edu.au](mailto:studentengagement@latrobe.edu.au)

### The news is named!

Over the last two months, we have asked you to “name the news”! “Student News” is a bit too bland for a student newsletter, so we asked for you to suggest some possible names for this publication. The suggestions were shortlisted

and put up for vote on the Student Engagement webpage. The results are in! After a great response from you all the winning name is La News, suggested by Alfredo Finotto. Thanks for the great suggestion, Alfredo- you will receive a \$30 JB HI-FI voucher!

## 2009 Community Awards for La Trobe Students Now Open

Applications for 2009 Community Awards are now open, and close on Monday 27 July, 2009. The four Community Awards are: the Harvey Naghten, Pauline Toner and Westpac Bank Awards (available to students in all Faculties and at all campuses), and the SCU/Lincoln Award (available to students in the Faculty of Health Sciences only, at all campuses).

Students enrolled in second year or above may be eligible. The eligibility criteria for each award may include one or more of the following: community involvement, academic achievement, or financial need. The 2009 Community Award Guidelines and Application form, and further information on the individual awards are available on the web at [www.latrobe.edu.au/scholarships/commawards](http://www.latrobe.edu.au/scholarships/commawards)

For further information, contact the Scholarships Unit, email: [scholarships@latrobe.edu.au](mailto:scholarships@latrobe.edu.au) or phone 9479 5622 or 9479 3375.

## Eco Update

### Tim Flannery in Conversation with Robert Manne

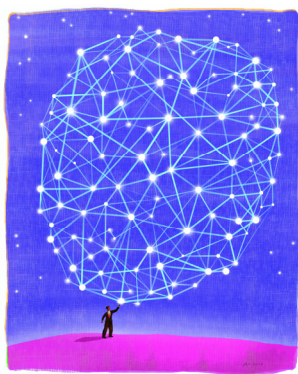
June 4<sup>th</sup> saw the meeting of great minds at La Trobe University with Professor Robert Manne launching his ‘In Conversation’ series with the renown environmental campaigner and La Trobe Alumnus, Professor Tim Flannery.

The live session was well attended by students, staff and visitors, who listened in to discussions ranging from the political agendas behind carbon trading, future directions of

coal and energy industries and a call to arms for young people- particularly students- to raise their voices on the issue of climate change.

You can view an excerpt of the conversation here:  
<http://www.latrobe.edu.au/news/articles/2009/article/tim-flannery-talks-with-robert-manne>

## Infinity Leadership Program 2010 now open for applications



After the successful introduction of the 2009 Infinity Leadership Program, La Trobe University is pleased to offer the program to current and previous students in 2010.

### What is the Infinity Leadership Program?

Infinity Leadership Program is for students and recent graduates of La Trobe University aspiring to leadership roles. It provides an opportunity for participants to utilise and develop their knowledge of leadership and to extend their skills and experiences by putting leadership into practice. It also gives more opportunities for students to engage with La Trobe alumni and staff.

### What does the program involve?

The Infinity Leadership Program consists of three components:

- Attendance at a two day workshop retreat
- A series of leadership seminars by guest speakers
- Completion of a community project

### Who can apply for the Infinity Leadership Program?

The program is open to undergraduate students who have completed at least two semesters of study, postgraduate students and recent graduates. International and Australian students from across all faculties currently studying at any La Trobe campus are welcome to apply. Entry is based on a combination of criteria including evidence of previous

community engagement, academic record and interview performance.

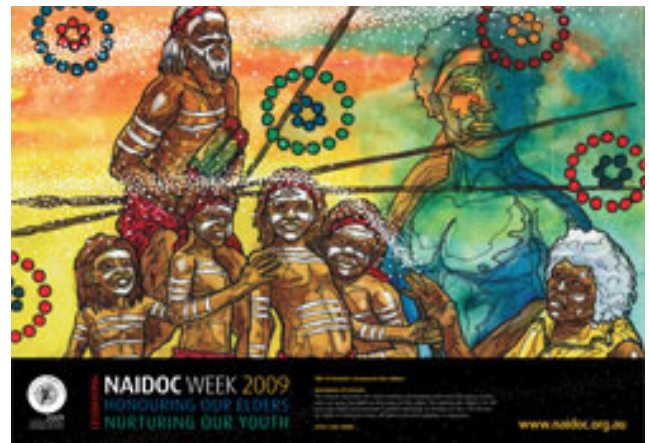
### Recognition

Infinity Leadership Program participants will receive a certificate on completion of the program, which recognises the acquisition of leadership skills and theories, and the completion of a community project.

For more information and to download an application form, please go to: <http://www.latrobe.edu.au/students/leadership/>

## NAIDOC Week

5-12 July 2009



NAIDOC Week celebrations are held across Australia each July to celebrate the history, culture and achievements of Aboriginal and Torres Strait Islander peoples. NAIDOC is celebrated not only in Indigenous communities, but by Australians from all walks of life. The week is a great opportunity to participate in a range of activities and to support your local Aboriginal and Torres Strait Islander community.

NAIDOC originally stood for 'National Aborigines and Islanders Day Observance Committee'. This committee was once responsible for organising national activities during NAIDOC Week and its acronym has since become the name of the week itself.

The theme for NAIDOC Week in 2009 is [Honouring Our Elders, Nurturing Our Youth](#). The theme encourages our

communities to acknowledge the status of our Elders as leaders and role models for our youth.

**NAIDOC March and Concert** 10 July, 2009, 12:00 pm - 02:00 pm. A street march culminating in speeches and a free concert at Federation Square.

Please go to [www.naidoc.org.au](http://www.naidoc.org.au) for more information and for Bendigo celebrations, please go to: [http://www.bendigo.vic.gov.au/Page/Download.asp?name=NAIDOC\\_Brochure\\_2009.pdf&size=651508&link=../Files/NAIDOC\\_Brochure\\_2009.pdf](http://www.bendigo.vic.gov.au/Page/Download.asp?name=NAIDOC_Brochure_2009.pdf&size=651508&link=../Files/NAIDOC_Brochure_2009.pdf)

## La Trobe Work Experience Expo— Something for Everyone!

Ever wondered how you're going to get that experience that all employers seem to want? Find out at the **Work Experience Expo** in the **Union Hall, Bundoora** on **Wednesday 5<sup>th</sup> August between 12.30 and 2.30pm**

You'll be able to talk to people from organisations such as the Big 4 accounting firms and Holden who are offering paid work experience over the summer break. There will also be representatives of organisations that offer voluntary positions and overseas opportunities. In fact, there is something for everyone no matter what your degree or year of study.

Whether your work experience is paid or unpaid, related to your chosen profession or not, here or in another country, employers will be impressed by your initiative and the skills you've developed. A job at the end of your degree could be the result!

For more details, check out our website ([www.latrobe.edu.au/careers](http://www.latrobe.edu.au/careers)). While you're there register with CareerHub to get information about graduate, vacation, part-time and casual positions.

## Free software, plus a great deal

### **EduApps (AccessApps)**

EduApps is a bundle of free adaptive applications that run off a USB flash drive. The applications have been aggregated by the Regional Support Centre, which is funded by the U.K.'s Joint Information Systems Committee (JISC).

Featuring text-to-speech software, mind-mapping tools and other applications to support reading and writing, EduApps (AccessApps as it was originally known) has been acclaimed for the accessibility solution it offers.

Since its inception, EduApps has diversified into several themes. While AccessApps contains all the packages on offer, there is also the student-focussed LearnApps and the teacher-focussed TeachApps.

The best bit is that they are totally portable, so the user can run them on most PCs without any prior installation. These are completely free and are available from <http://www.eduapps.org>

For any further information on EduApps and its potential, please contact Anthony Earl, Accessibility Resource Officer, on 9479 3653 or via email, [a.earl@latrobe.edu.au](mailto:a.earl@latrobe.edu.au)

## La Trobe University Library

### More Arts and Humanities e- journals

[Scopus](#), the largest abstract and citation database of peer-

reviewed literature and quality web sources with smart tools to track, analyse and visualise research, has expanded its Arts & Humanities coverage with the addition of nearly 1,450 new titles.

[Scopus](#) users can now get broader access to close to 3,500 high-quality, international Arts and Humanities journals dating back to 2002 in a variety of subject areas including -

- Education
- History
- Developmental & Educational and Social Psychology
- Literature and Literary Theory
- Architecture, Design

Check out Scopus now via the 'Databases' tab on the Library homepage.



**Library Live Chat – let us know who you think!** Have you used the Library's live

chat service during Semester? If so, we'd love to hear your thoughts – let us know on the Library blog [www.lib.latrobe.edu.au/blog/](http://www.lib.latrobe.edu.au/blog/) Live chat operates from 11:00am to 1:00pm, Monday to Friday during semester.

You can chat directly with a librarian who can answer any of your research questions, and you can do it from wherever you are - at home, at uni or even in the Library!

You can also email a question outside the chat service hours via the 'Ask a Librarian' service linked from the Library homepage.

## Now is the time to explore the Library's growing range of e-books!

At the beginning of 2009, the Library purchased nearly 2500 additional, current electronic book titles including 148 Behavioural Science titles, 1381 Biomedical and Life Sciences titles, and 1069 Humanities, Social Science and Law titles.

To find this new collection of e-books search the catalogue by Author for 'Springer'. You can also find other e-books by entering a search term and choosing 'Ebooks' from the drop down list on the Library

## ARNOLD ANSWERS!

Hey there,

*In the 'Arnold Answers' column of the June Edition of the Student News you encourage students to speak to their academic advisor about their progress. How do I find out who the academic advisor is for the nursing department? Thanks in advance*

–Kate

Howdi Kate,

Good question! I'll do my best to answer it!

An "academic advisor" is a faculty or school staff member who is able to aid students with issues relating to academic progress and opportunities. This is not to be confused with

administration staff, whose job it is to deal with the paperwork side of things (although there is usually some cross over). These academic advisors might go by different titles such as registrars or academic support officers, but they all will be able to help you with understanding course requirements, pre-requisites and admissions/deferrals.

Not all faculties and schools have the same structure, however most faculties have a service desk you can go to and ask about speaking to someone regarding your academic concerns. They will be happy to point you in the right direction.

Remember, if you do have academic concerns, SPEAK TO SOMEONE ABOUT IT! There are people whose job it is to handle these types of concerns. Don't feel like you don't need to ask, or that you are just burdening them; they WANT to help!

Within Nursing you can contact the Health Sciences Service Desk at [health@latrobe.edu.au](mailto:health@latrobe.edu.au) and they will more than likely direct you to the registrar (depending on what exactly it is you want to find out, of course). You can also shoot an email to the School of Nursing ([nurrec@latrobe.edu.au](mailto:nurrec@latrobe.edu.au)) if you don't find what you are after.

Hope this helps, Kate!

\*SQUARK\*

## ASK ARNOLD!

Arnold is your campus oracle, possessing the knowledge and wisdom needed to answer all your questions about university life.

Whether it is finding out how to start your own student group, how to get the most out of lectures, or where to get the best coffee on campus, Arnold is the man... err... bird!

Email Arnold at [studentengagement@latrobe.edu.au](mailto:studentengagement@latrobe.edu.au) and your answer will appear in the next edition of Student News. (Arnold is an actual student!)



## YAG Update

The Young Alumni Group (YAG) has a number of exciting events coming up for La Trobe students over the next couple of months.



For students struggling to find things to do over the semester break, MC YAG (Movie Club YAG) will be hosting another movie viewing on Tuesday 14 July. The first fifteen lucky YAG members to register will get to see a movie for free at Hoyts Northland then review the film over coffee.

YAG will be launched at the Bendigo campus on Thursday 27 August at a career networking event called Snack to the Future. Bendigo La Trobe students will receive practical advice on how to network to further their careers by La Trobe University Regional Careers Consultant, Nicole van Oosterwijck. La Trobe University Bachelor of Pharmacy alumnus, Katherine Hancy, will discuss her transition from La Trobe into the workforce and how she utilizes her networking skills in her current position. The event will also see the launch of the La Trobe Chapter of the Golden Key International Honour Society on the Bendigo campus.

For more information on these events contact [yag@latrobe.edu.au](mailto:yag@latrobe.edu.au), or visit our website <http://youngalumngroup.weebly.com/>.

## Tax Tips for Students

It is coming up to the end of the financial year, and that means it's tax time. So what are some student tax tips that will help you with your tax return?

### **Expenses you can claim**

If you're eligible, you can claim the following self-education expenses as a tax deduction:

- course and tuition fees (FEE-HELP & OS-HELP)
- textbooks, professional and trade journals
- stationery and photocopying
- cost of repairing a computer you use for study purposes

- interest on borrowings to purchase a computer
- decline in value (depreciation) of a computer
- student union fees
- meal costs if participating in your course means you must be away from home for more than one night
- running cost expenses if you have a room set aside for work-related study purposes
- [allowable travel](#).

For all your tax information about your self-education expenses, visit [www.ato.gov.au/studyandclaim](http://www.ato.gov.au/studyandclaim)

## The John Monash Awards



### **Purpose:**

- The Awards are to develop Australia's future leaders.
- They recognise and promote excellence in scholarship and leadership.
- They assist in the education of outstanding young Australian achievers at the best universities overseas.
- They enable the formation of global networks by Australia's future leaders.
- The Awards are Australia's equivalent of prestigious scholarships offered by other countries.

### **About the Awards:**

- Each Award provides up to \$150,000 (Australian income tax exempt) over three years.
- Awards support study for a degree of PhD, DPhil or equivalent or to a relevant professional Masters Degree at universities, which are the best in the field.
- Eight Awards are made annually –forty eight Awards have been made to date.

### **Selection criteria:**

The Awards are open to Australian citizens of any age or gender with:

- Outstanding intellect, including academic achievement;
- Demonstrated leadership qualities and potential;
- Altruism, demonstrated through community service; and
- Integrity and excellent presentation and communication skills.

- In their careers, Award Winners are expected to make a significant contribution to Australia.

The Award Winners are chosen on a national basis by a National Awards Committee. Applicants are interviewed and short-listed first by State and Territory Panels, chaired by current or retired Vice-Chancellors. The Committee and Panels include academic, business and community leaders.

**How to apply:**

For more information on how to apply and an application form, go to: [www.monashawards.org/awards.asp](http://www.monashawards.org/awards.asp)

**Closing Date: August 31<sup>st</sup>**

## Albury-Wodonga News and Events

### Volunteer for Open Day

Are you studying at Albury-Wodonga and interested in being a Guide for Open Day? On Sunday 23<sup>rd</sup> August, the Albury-Wodonga Campus will be welcoming potential students of the future, and would love to see you getting involved by making guests feel welcome and informed. As an Open Day Guide you will be provided with prior training to make sure you are confident with your role. You will also be rewarded after the event for your contribution.

This really is a great opportunity to get involved with campus-life and to support La Trobe's future development. For more information or to register your interest please contact Tammy Ebert, Campus Administration Officer on [t.ebert@latrobe.edu.au](mailto:t.ebert@latrobe.edu.au) or 02 6024 9782.

### Sustainability Fair Sunday 23 August, 10am-3pm

The Sustainability Fair will be held in conjunction with Open Day at La Trobe Albury-Wodonga and Wodonga TAFE. The Fair will take place in a central location with access to both campuses.

The focus of the Fair will again be on sustainable living and the related practices that preserve resources and reduce negative impact on the environment. La Trobe is committed to sustainable practices and this event is built on the success of the inaugural Sustainability Fair held in 2008. For more information, see: <http://www.latrobe.edu.au/aw/events/major-campus-events/sustainability-fair>



### Do You Play Basketball?

The Wodonga Basketball Association is seeking new players and teams for their winter competition. The season bounces into life on 13<sup>th</sup> July, with Division One and Two Men's and Women's Teams both playing on Monday evenings.

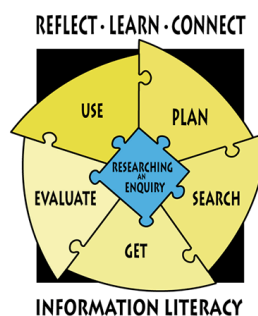
Team or individual entries are welcome, with strong players particularly being sought for Division 1 Women's matches. Or why not consider entering your 'A' Grade footy or netball team for further training or bi-lateral skill development?

Contact the Basketball Office during game times on Monday, Thursday & Friday between 4.30-7.30pm for registration information and costs. Tel: 02 6059 3644



Albury-Wodonga

### Information Literacy Modules for Health Sciences Students 2009



Since 2008, the Library has been actively involved in supporting the Common First Year (CFY) for Health Sciences students. One of the Library's initiatives has been to develop a series of 11 online Information Literacy Modules which are available 24/7 via LMS

and from our website. Modules are short and are subject-specific with topics such as 'Finding items on a resource list' and 'Referencing with APA style'.

Recently three Albury-Wodonga nursing students completed a survey designed to test the usability of those modules. The results of this survey will be used to improve the modules in the future. The Library thanks the participants for their time and effort.

## Bendigo News and Events

### Daytrip to the Snow

Enjoy an escape to the picturesque Mt Buller. With opportunities to ski, snowboard, toboggan or simply stroll and take in the spectacular scenery this daytrip really is the quintessential winter experience. An early departure at 5am from the Bendigo Campus ensures you will have a full day on the mountain. Expected return time to Bendigo is 9pm.

The daytrip costs \$35 for Guild Members, \$45 for non-Guild LTUB students, and \$60 for the general public. This price includes all transport costs and entry to the resort.

To reserve your place on this trip please book at the BSA Info Centre. If you have any queries regarding this trip please call 5444 7988 for further details.

### National Campus Band Competition

The National Campus Band Competition (NCBC) is the largest live band competition in the southern hemisphere! NCBC has been running on Australian University and TAFE campuses across the country for nineteen years providing audiences with some truly memorable moments and memorable bands. Each year up to one thousand bands from over eighty institutions compete live hoping to be crowned national winners of this prestigious and highly-respected competition.

NCBC is a great way to get live music experience under your bands belt, not to mention some great prizes and media and record company attention. Previous winners and entrants have included: Eskimo Joe, The Vines, Jebediah, George, Grinspoon, Waikiki, Frenzal Rhomb, 78 Saab, Augie March and Vasero Era, to name but a few...

The competitions local Bendigo heat is due to take place on Wednesday 12<sup>th</sup> August and bands are encouraged to register online asap at <http://www.aaca.net.au/htmls/ncbc.html>

### Be a Guide at Open Day!

La Trobe University, Bendigo will hold its annual Open Day this year on Sunday August 16th from 10am-4pm. Once again we are again searching for students who are willing to offer their time to help show potential future students and their families around the Campus.

Bendigo is known as a friendly campus, and having welcoming guides is a great way to promote what the campus has to offer. As a guide you will be provided with full training prior to the event to ensure that you are confident & prepared. You'll also receive some extra special rewards as a thank you for your efforts, as well as a certificate of appreciation.

If you are interested in taking on the valuable role of an Open Day Guide for 2009, please register your interest by emailing Jenelle Holmberg on [J.Holmberg@latrobe.edu.au](mailto:J.Holmberg@latrobe.edu.au) Volunteers are required to attend one of the training sessions being offered for Open Day Guides on Thursday 13 August (5-7pm), Friday 14 August (10-12noon), or Friday 14 August (2-4pm).

## Bundoora News and Events

### Don't feed the Animals

The Bundoora Campus of LTU is well known for the diversity of native animals roaming the campus lawns and gardens. Animals like Swamphens, Moorhens, Ducks, Possums and Kangaroos. Problems often arise when human interaction causes changes in the animals' natural behaviour which lead to negative effects in animal communities and population dynamics.

**Over the past weeks a small group of Black Swans has taken up residence in the Agora and are being further encouraged to stay by consistent feeding by staff and students.**

Providing animals with food can lead to side effects like begging, increased dependence on humans, attraction of pests and vermin, loss of foraging skills, reduction in habitat size, over population and overexploitation of local resources,

disease and pollution of wetlands. Feeding increases competition and aggression between individuals leading to injuries and deaths. Regular contact with humans also decreases natural fear, leaving them prone to attacking humans for food or to be attacked.

The Wildlife Sanctuary staff and volunteers strive to maintain the diversity of native flora and fauna so communities can manage themselves. We encourage staff and students and their families to visit us and discover for themselves what our area was like over 200 years ago.

For more information on these, or any issue relating to native flora & fauna, please phone: **9479 1206** or [wildlife@latrobe.edu.au](mailto:wildlife@latrobe.edu.au)



**La Trobe University  
 Museum of Art-  
 Philippines Social  
 Realist Art**

**30 June - 31 July**

The exhibition, *Fractions of an Intangible Whole: Philippine Social Realism in the Anteneo Art Gallery* draws from the strong collection of Philippine social realist works in the 1970s - 1980s of the first museum of modern art in the Philippines, the Ateneo Art Gallery. The show looks at how historically significant works become animated with new meaning through the museum and its exhibits which include contemporary art sourced outside the collection.

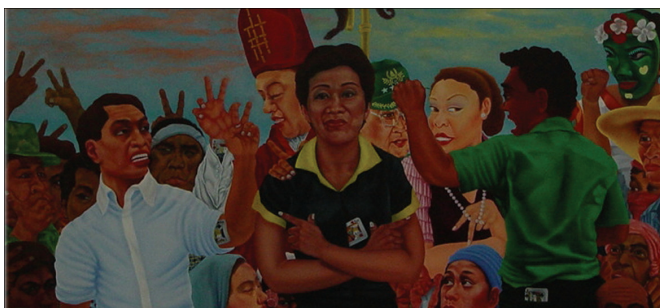


IMAGE: (detail) Lazaro "Aro" Soriano, *Jack en Poy (Rock, Paper, Sissors)*, 1987, oil on canvas, 156x156 cm, Ateneo Art Gallery, Philippines

For information on the exhibition and to receive a program of Public Lectures, please contact: Grace Longato  
 Education and Public Program Officer  
 T: 9479 2111 E: [g.longato@latrobe.edu.au](mailto:g.longato@latrobe.edu.au)

**LaTrobe  
 University  
 Library**

**Bundoora**

**Extended opening hours at Bundoora**

In response to demand from Library users, from second semester 2009 the Library at Bundoora campus will be open earlier, from 8:00am Monday to Friday (previously 8:30am).

The Inquiry Desk, Reserve and AV Desks will continue to begin operation at 8:30am but books and workstations will be available to students from 8:00am.

The Library will also be open longer every weekend from 11:00am to 5:00pm (previously 1:00pm to 5:00pm except in the weeks before exams).

**Library Orientation Tours and Catalogue Sessions – Semester 2**

The Library is running sessions on the following dates:

**Orientation Tours**

- [Wednesday 5th August 2009, 1:30pm to 2:00pm](#)
- [Thursday 6th August 2009, 1:30pm to 2:00pm](#)

**Catalogue Sessions**

- [Wednesday 5th August 2009, 1:00pm to 1:30pm](#)
- [Thursday 6th August 2009, 1:00pm to 1:30pm](#)

Book online at [www.lib.latrobe.edu.au/training/](http://www.lib.latrobe.edu.au/training/)

**Mildura  
 News and Events**

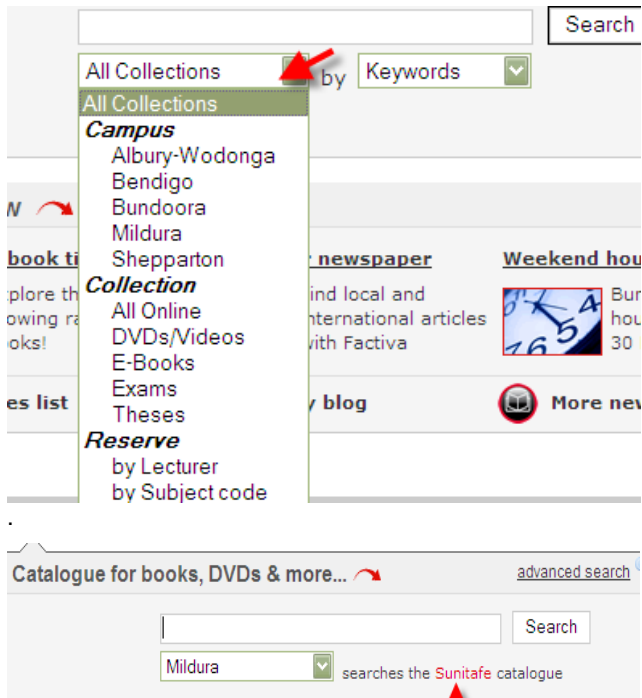
**LaTrobe  
 University  
 Library**

**Mildura**

**Quicker search for students at Mildura**

Students at Mildura can now go straight to the TAFE catalogue from the Library homepage. No more going through several links to find the local catalogue – or even forgetting to look in the local library.

Students on campus will see that the search defaults to Mildura with a link alongside to the local TAFE catalogue

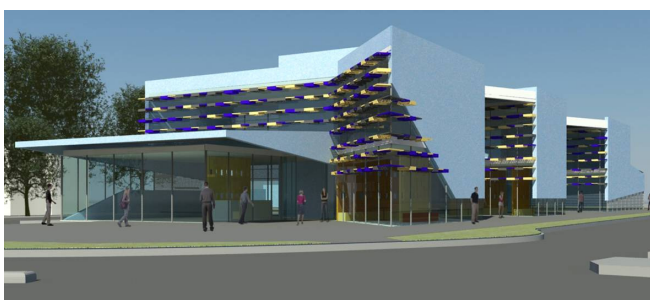


It is important to remember that a search of the TAFE catalogue does not search the materials held at other La Trobe campuses - the catalogues are still separate and need to be searched separately. To check other La Trobe holdings select the appropriate item from the drop-down list.

## Shepparton News and Events

### NEW STUDENTS! NEW BUILDING!

Current Shepparton students are invited to welcome new mid-year entry students at an afternoon gathering on Wednesday 29<sup>th</sup> July. Following an Information Session to be held in the library from 3.00pm, at which current students who would like to brush up on their essay writing, referencing and note-taking



skills are more than welcome to attend, there will be an opportunity to learn more about the new Shepparton Campus Building. Refreshments and the launch event for the new building will be held in the Harder Auditorium from 4.30pm.

For further details about how you can get involved, please contact Cathy McKenna on [c.mckenna@latrobe.edu.au](mailto:c.mckenna@latrobe.edu.au) or 03 5821 8356.

### Muffins and Advice for Exam Success



In the lead up to the exam period, Student Services at the Shepparton Campus arranged a Muffin Break Session in the

Library on Wednesday 3<sup>rd</sup> June. Judy Weaver (Student Counsellor), Iris Perkins (Librarian) and Cathy McKenna (Student Services Co-ordinator) were on hand to provide support, encouragement and to answer any questions students had prior to exams. Judy provided hints, tips, and hand-outs on breathing techniques to stay calm under stressful situations, whilst Iris had helpful revision tips and study skills advice. Cathy too played a pivotal role by supplying the muffins, hot drinks and a small display of La Trobe merchandise available to purchase.

### Networking for Student Futures

Two Shepparton students contributed towards a successful Industry Networking Event held at the GV Hotel on Thursday 21<sup>st</sup> May. The evening, led by Campus Director Liz Lavender, aimed to develop linkages with local industry and community in order to better facilitate student involvement in work placements, scholarships, mentoring programs and voluntary work. It was also an opportunity to showcase La Trobe Shepparton to the local community, and in particular highlight potential benefits of developing links between students, staff and industry players.

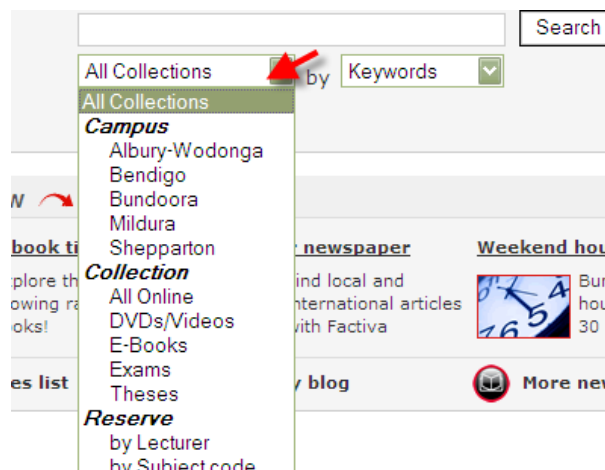
Association please contact Cathy McKenna on [c.mckenna@latrobe.edu.au](mailto:c.mckenna@latrobe.edu.au) or 03 5821 8356

**LaTrobe University Library** | Shepparton

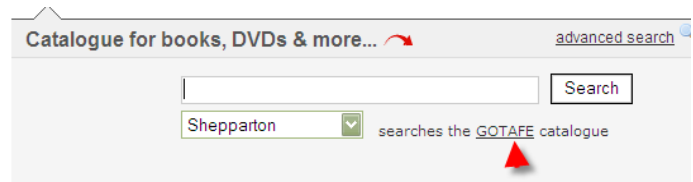
## Local catalogue now available on Library homepage

Students at Shepparton can now go straight to the TAFE catalogue from the Library homepage. No more going through several links to find the local catalogue – or perhaps even forgetting to look for materials in the local library.

Students on campus will see that the search defaults to Shepparton with a link alongside to the local TAFE catalogue



Note: a search of the TAFE catalogue does not search the materials held at other La Trobe campuses - the catalogues are still separate and need to be searched separately. To check other La Trobe holdings select the appropriate item from the drop-down list.



## Submit an article

Students and staff are welcome to submit articles. Next cut off date is: Wednesday 29<sup>th</sup> July  
 Email: [studentengagement@latrobe.edu.au](mailto:studentengagement@latrobe.edu.au)

At least thirty local employers attended the evening who were given an overview of established and emerging La Trobe projects from Anne Stansfeld (Associate Director, Careers and Employment) and Jon Neal (Regional Student Engagement Officer). These overviews were complimented by impressive student testimonies from Janet Congues and Geraldine Christou, presenting vivid and positive messages about their student experiences. Unfortunately, due to illness Malcolm Rimmer (Head, Regional School of Business) was unable to attend, but his perspective was relayed eloquently by Sue Nalder.

Industry perspectives were represented by speakers Geoff Devine (SPC) also a former LTU student, and Jim Dannock from the Australian Industry Group ([www.aigroup.com.au](http://www.aigroup.com.au)).

Questions from the floor were followed by an opportunity for those present to network. Following positive feedback it is hoped that the Industry Networking Event will be developed into a format which sees it become a regular event on the La Trobe Shepparton calendar. Thank you to all those who contributed their time, effort and thinking towards this event, in particular to Leon Moulden and Cathy McKenna

## Cocktail Night a Recipe for Success

Shepparton Student Association organised a highly successful and glamorous cocktail evening on Friday 29<sup>th</sup> May. The glitzy affair held at the G.V. Hotel saw over thirty five students all enjoy themselves by sipping on exotic and colourful concoctions, and mingling with their tipples and scintillating conversation. Emma McLean, a lucky second



year commerce student, took home the much coveted ticket prize of a lunch for two at Friars Café Shepparton. If you would like to find out more about the Shepparton Student



## Q&A Vic 2009 is looking to create resilient, effective and visible leaders

### Are great leaders born that way or can you learn to be a leader?

Where is the next generation of gay, lesbian, bisexual, transgender, intersex and queer (GLBTIQ) community leaders going to come from?

Q&A Vic represents an exciting opportunity for established and emerging regional and rural Victorian GLBTIQ leaders aged between 18 and 28 to effect social change.

Q&A Vic is open to individuals with a commitment to community leadership and social change. Q&A Vic will run from July to November 2009. Between 12-25 participants per year will develop their leadership capacities through a structured program involving community engagement, personal reflection, mentoring and project development within the GLBTIQ communities.

For further information on recruitment contact:

Abigail Elliot  
Coordinator Q&A Victoria

[aelliott@fpv.org.au](mailto:aelliott@fpv.org.au) or T/ 0403 820 798

Meredith Turnbull  
Q&A Leadership Consultant

[mcturnbull@gmail.com](mailto:mcturnbull@gmail.com) or T/ 0437 880 010

To download an application form and answers to frequently asked questions, go to [www.fpv.org.au](http://www.fpv.org.au)

Q&A Vic is the adaptive leadership program of Mind the Gap!, a community engagement project focusing on the primary prevention of HIV and STIs in GLBTIQ people under the age of 25.

Brought to you in partnership by: Family Planning Victoria, Victorian Aboriginal Community Controlled Health Organisations (VACCHO), Centre for Adolescent Health, Youth Empowerment Against HIV/AIDS (Y.E.A.H.), FAR Social Enterprises and The Twenty10 Association.

Funded by: Department of Human Services Blood Borne Virus and Sexually Transmitted Infections Unit

