

---

# Nursing and Midwifery

---

## Undergraduate Programs

## Why La Trobe?

Welcome to the Division of Nursing and Midwifery at La Trobe University.

By choosing La Trobe, you will align yourself with one of the finest providers of nursing and midwifery education in Australia. We have a long and proud history of delivering the very best in contemporary education and producing graduates that go on to succeed in a diverse range of Healthcare settings.

Rest assured you are joining a School for the 21st Century. Over the years, the Division has established an enviable number of clinical schools in partnership with well-known hospitals and community healthcare centres, where students gain first hand experience necessary to meet modern healthcare challenges.

Nursing and Midwifery are global occupations and the Division's large metropolitan and regional focus is underpinned by a curriculum that addresses the national and international contexts. As a La Trobe graduate, you can look forward to choosing a career in an ever expanding healthcare setting with job opportunities both at home and abroad.

While students need to be able to demonstrate expert knowledge and skills they soon realise that nursing and midwifery is much more than simply the acquisition of technical expertise. You will engage with real people in live healthcare settings and be required to call upon and further

develop your self awareness. You will be taught values of compassion and humility and to recognise the plight of those you care for.

Although teaching and learning form an important part of the Division's core function, our staff are also active participants in cutting edge research. As a La Trobe Nursing and Midwifery student, you to will be encouraged to step outside your comfort zone, look for alternatives, question current practices and provide leadership for a new generation of healthcare professionals.

I hope you enjoy your time with us and I encourage you to embrace the rich academic, clinical, social and cultural experiences that await you.



*Professor Gerald A. Farrell,  
Associate Dean,  
Division of Nursing  
and Midwifery*

## About the Division

The Division of Nursing and Midwifery's origins extend back to 1948 as the College of Nursing, Australia. We therefore have a long and well regarded history as Australia's oldest provider of high level tertiary education in nursing.

As a result the Division has established a tradition of innovation, excellence and dynamism in nursing research and nursing education both national and internationally.

### Endless Career Possibilities

Nursing and Midwifery are global occupations that allow you to specialise in your area of interest. As a La Trobe graduate, you can go on to specialise in such areas as Emergency, Intensive Care, Acute Care, Surgical, Child and Adolescent, Neonatal Care, Community Care, Mental Health, Aged Care and Palliative Care. The opportunities are limitless and the choice is yours.

### State of the Art Nursing Skills Laboratories

Our on-campus laboratories enable students to practice and develop their clinical nursing skills in a simulated and supportive environment. These facilities allow our students to interact with computer controlled simulation mannequins and practice venepuncture, intravenous therapy, medications management and dynamaps (measuring a full range of vital signs).

### Industry Partnerships and Clinical Placement

Nursing is a uniquely 'hands on' field of study. Studying nursing is about doing and about being in the environments you will work in after graduation. A typical La Trobe nursing student spends nearly 900 hours in live healthcare venues during their degree, observing or putting into practice the theory and skills learnt in lectures and tutorials.

Clinical units introduce the full spectrum of nursing today, including aged care, psychiatric, medical/surgical and community settings. Many placements take place in large hospitals, at the leading edge of modern healthcare and for the adventurous, there can even be opportunities to experience nursing in a prison, or in a remote community.

Students from regional campuses have the opportunity to select their clinical placements from a wide range of regional and metropolitan hospitals, and rural and community healthcare facilities.

While on clinical placement, you will enjoy the benefit of our strong industry partnerships where an experienced Division 1 Nurse will always be at hand to provide support and supervision. The patients are real, and the experience is priceless.

### Student Support

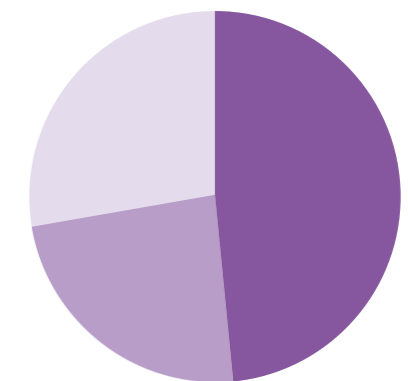
We recognise that a commitment to higher education can confront our students with a variety of challenges. To ensure that you have the necessary support to achieve excellence, La Trobe offers support services to meet every individual's needs. Student support services include:

- Academic Skills Assistance
- Accommodation Services
- Careers and Employment
- Counselling
- Disability Support
- Equity and Access
- Information Technology (IT) Services
- Mature Age Student Support
- Security and Safety
- Medical Services
- Religious Services
- Indigenous Student Services
- Student Services and Associations

### Costs

All University students are required to fund a portion of the cost of their education. Based on 2008 Commonwealth Supported Place (CSP) rates, the three year course costs \$15,016 and the four year double degree \$19,093. It should be noted that the course fees are updated annually and for up to date information regarding fees, students should refer to the University Fees Website: [www.latrobe.edu.au/acadserv/current/fees.html](http://www.latrobe.edu.au/acadserv/current/fees.html)

CSP fees may be paid at the commencement of each semester in full or in part with a 20% discount, or deferred as a future tax liability. For further information regarding CSP and eligibility refer to the website: [www.goingtouni.gov.au](http://www.goingtouni.gov.au)



How you will spend your time

Practical

Theory

Clinical



## New Curriculum

As pioneers of best practice and to ensure that our graduates are always at the forefront of industry development, we are introducing a new curriculum in 2009 that offers our students the best competency based education coupled with flexible education pathways.

Our new curriculum will focus on three main stages\* of your educational development:

<b>Foundation Year</b>	will see you study alongside students from other healthcare professions which will hone your multidisciplinary skills in public health and human biosciences.
<b>Therapeutics Year</b>	will develop your assessment and diagnostics skills and introduce you to acute, community and mental health nursing.
<b>Consolidation Year</b>	will further develop your critical thinking and analytical skills whilst immersing you in advanced nursing practice. The Consolidation Year will see you dealing with such issues as chronic illness, care of older people and complex acute care.

\* The above structure incorporates the Bachelor of Nursing (pre-registration). Alternative entry pathways will exist for Graduate Entry and Division 2 Conversion students.

For information on the new curriculum as it develops please visit our website [www.latrobe.edu.au/nursing](http://www.latrobe.edu.au/nursing)



## Courses

### Bachelor of Nursing

This course allows students to develop a broad understanding in the field of nursing practices with a particular focus which promotes nursing as a caring, patient-centred and scientific profession. Graduates of this course are able to apply for Division 1 Registration with the Nurses Board of Victoria or equivalent.

Graduates may work in general and specialist hospitals, community health centres, mental health, extended care facilities, the armed forces and services for the intellectually disabled.

There are four separate entry points into the Bachelor of Nursing. They are Pre-registration, Graduate Entry, Division 2 Conversion and Post-Registration.

\* This course is currently under review and may be available at additional campuses from 2009. Please refer to the website [www.latrobe.edu.au/nursing](http://www.latrobe.edu.au/nursing) for more information.

### Bachelor of Nursing / Bachelor of Midwifery

This course provides graduates with compressive studies in both nursing and midwifery. This four year, full-time course enables the graduate to apply for registration as a Division 1 Nurse and Endorsement to Practice as a Midwife with the Nurses Board of Victoria (NBV) or equivalent.

**Suited to** School leavers and mature aged students. This course is not available to International applicants.

**Duration** 4 years (Full time)

**Campuses** Melbourne (Bundoora)

**Selection** ENTER  
Melbourne (Bundoora): 82.05

**Pre-requisites**  
VCE Units 3 & 4: a study score of at least 30 in English (ESL) or 25 in English and a study score of at least 20 in one of Biology, Chemistry, Mathematics (any), Physical Education or Physics.

### Bachelor of Nursing (Honours)

This course is designed to further develop academic and investigative skills, critical review and analysis of data skills in the students chosen area of interest within the nursing discipline.

Graduates open the pathway to senior nursing positions and further study at masters or doctorate level and careers in research or academia.

**Suited to** Applicants who hold Division 1 Registration with the Nurses Board of Australia (NBV) or equivalent in another Australian state.

**Duration** 1 year (full time)  
2 years (part time)

**Campuses\*** Albury-Wodonga  
Bendigo  
Melbourne (Bundoora)

#### Selection and Pre-requisites

To be eligible students should have achieved a B-grade average or above in their final year of studies within a Bachelor of Nursing. Students with a Bachelor of Nursing from another institution may be considered for entry. Applications are submitted directly to the Division.

### Advanced Diploma in Nursing

The Advanced Diploma is a one year part time course that upon successful completion, allows students who have previously allowed their registration with the NBV to lapse, apply for re-registration or an international registered nurse wishing to obtain registration in Victoria.

**Suited to** Local applicants who have previously been registered as Division 1 nurse who have allowed their registration to lapse and are seeking re-accreditation with the NBV. International Registered Nurses wishing to obtain registration in Victoria. Applicants should contact the NBV in the first instance to determine their eligibility for the course.

**Duration** 1 year (part time)

**CRICOS** 047024D

**Campuses** Albury-Wodonga  
Bendigo  
Melbourne (Bundoora)

#### Selection and Pre-requisites

Prior professional registration with the NBV or equivalent in another state. Applicants are required to provide evidence of their eligibility from the NBV. Applications are submitted directly to La Trobe.



# Four entry points into the Bachelor of Nursing

1

## 1: Pre-Registration

**Suited to** School leavers, International applicants and mature aged students. Holders of an Australian Bachelors Degree (or equivalent) or Division 2 Registration with the NBV (or equivalent) should refer to the Graduate Entry or Division 2 Conversion courses respectively.

**Duration** 3 years (Full time)

**CRICOS** 020935J

**Campuses** Albury-Wodonga  
Bendigo  
Melbourne (Bundoora)  
Mildura (Not available to International applicants)  
Shepparton (Not available to International applicants)

**Selection** ENTER  
*Albury-Wodonga:* 53.75  
*Bendigo:* 60.20  
*Melbourne (Bundoora):* 73.00  
*Mildura:* 53.50  
*Shepparton:* 61.00

### Pre-requisites

VTAC – VCE Units 3 & 4: a study score of at least 30 in English (ESL) or 25 in English and a study score of at least 20 in on of Biology, chemistry, Mathematics (any), Physical Education or Physics.

UAC – Any two units of English (Band 3) and (Band 2) in one of the following units: Biology, Chemistry, Mathematics, Physics, Personal Development Health and Physical Education. UAC applications are only considered for Albury-Wodonga and Mildura campuses.

2

## 2: Graduate Entry

**Suited to** Both Local and International applicants who hold an Australian Bachelors degree or overseas equivalent (as approved by the Australian Overseas Qualification Recognition body NOOSR)

**Duration** 2 years (Full time)

**CRICOS** 028782A

**Campuses\*** Melbourne (Bundoora)

**Selection** Selection is based on the Grade Point Average obtained in the completed Bachelor degree

### Pre-requisites

Successful completion of an Australian Bachelors Degree or equivalent. Successful applicants must complete a recognised bridging program in anatomy and physiology.

3

## 3: Division 2 Conversion

**Suited to** Applicants who hold Division 2 Nursing Registration with the Nurses Board of Australia (NBV) or equivalent in another Australian state. This course is not available to International Applicants.

**Duration** 2 years (Full time)

**Campuses** Albury-Wodonga  
Bendigo  
Melbourne (Bundoora)  
Mildura  
Shepparton

**Selection** Selection of applicants is based on the STAT Multiple Choice results. Some applicants may also be invited to an interview.

### Pre-requisites

Current Division 2 Registration with the Nurses Board of Victoria (NBV) and completion of the STAT Multiple Choice test offered through VTAC. Successful applicants must complete a recognised bridging program prior to commencement of the course. It is preferred that applicants to the Bundoora Campus have at least 1 years work experience as a Registered Division 2 Nurse.

4

## 4: Post-Registration

**Suited to** *Stream A* – This course is open to both Local and International nurses who hold a diploma from a college or university or who hold a nursing certificate from a hospital-based program and want to update the qualifications to Bachelors level.

**Suited to** *Stream B* – This course is designed for both Local and International nurses who hold a diploma or degree in nursing from a college or university or who hold a nursing certificate from a hospital-based program and are not currently registered with the NBV. *Stream B* leads to registration with the NBV.

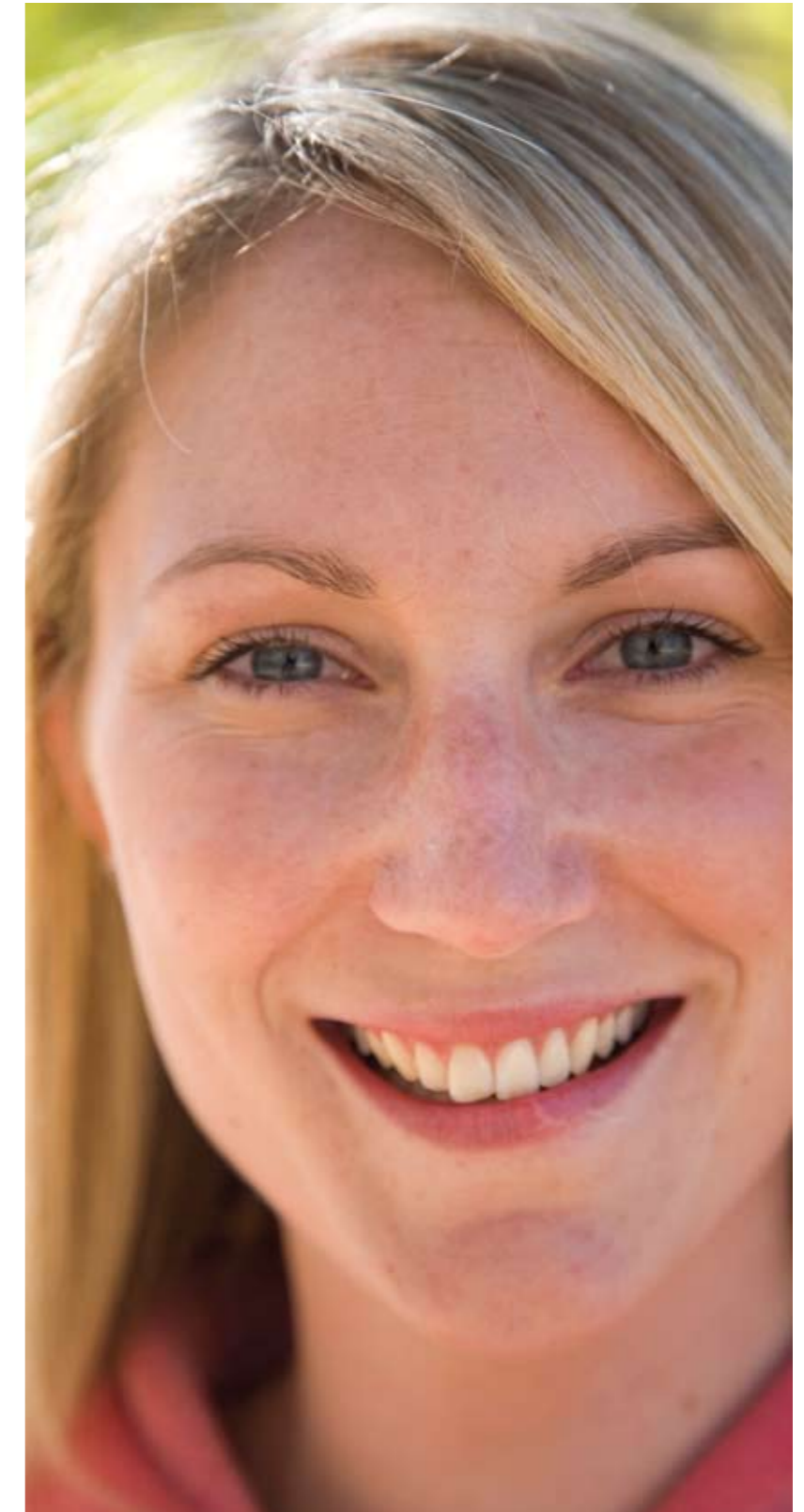
**Duration** 1 year (full time)

**CRICOS** 006295J

**Campuses\*** Albury-Wodonga  
Bendigo  
Melbourne (Bundoora)

### Selection and Pre-requisites

Applicants must hold a diploma from a college or university or who hold a nursing certificate from a hospital-based program. Applicants must have previously been registered as Division 1 or Division 3 nurses with the NBV and wish to re-enter the nursing profession. *Stream B* applicants are required to provide the university with a letter from the Nurses Board of Victoria granting permission to undertake the course with the intention of applying for registration or re-registration. Applications are submitted directly to the Division of Nursing and Midwifery.



# La Trobe University Campuses

La Trobe University offers the opportunity to study at its beautiful campuses in Melbourne (Bundoora) and our regional campuses at Bendigo, Mildura, Shepparton and Albury - Wodonga.



## Bundoora Campus:

With around 19,000 students, the Melbourne (Bundoora) campus is the University's largest. 14 kilometres from the city centre the beautiful 330 hectare campus is situated in spacious parkland in Melbourne's leafy north-east.

As well as teaching and research facilities, the campus has a world-renowned library, restaurants and shops, sports and recreational facilities, entertainment venues, an art museum, a weekly market, student accommodation, a hospital and pharmacy, banking facilities and a Wildlife Sanctuary.

On the Bundoora campus, you will profit from the newly refurbished Nursing Skills Laboratory opened in 2008. You will also benefit from spending your final year of study at one of our hospital based clinical schools situated at either the Austin or Alfred hospital, where you will undertake both your clinical and theory.



## Bendigo Campus

150 kilometres northwest of Melbourne Bendigo is one of Australia's largest regional cities. Only three kilometres from the town centre the on 33 hectare Bendigo campus is home to around 4,000 students and provides a peaceful and secure study environment. As well as teaching and research facilities, the campus has accommodation, childcare, a café, bookshop, and a sports centre and art gallery.

The Campus offers the students access to a recently refurbished Nursing Skills Laboratory, extensive library and modern class room facilities.



## Mildura

Caters for around 300 students, the Mildura campus is located on the Murray River in Victoria's northwest and is at the centre of a vast agricultural and horticultural region. The \$4.5M facility completed in 2003 also incorporates a dedicated Nursing Skills Laboratory to support student learning.

Students enjoy the best of both worlds, as they benefit not only from the expert lectures videolinked from other campuses but also from the professional support of local staff who facilitate tutorials and clinical preparation.

As well as teaching and research facilities the Mildura campus has accommodation, childcare facilities, the Dulka Yuppata Koorie Cultural Centre, a library and bookshop, a migrant education centre, canteen and restaurant, and student association.



## Shepparton Campus

Shepparton lies two hours from Melbourne at the heart of a major agricultural region. Supported by an enthusiastic group of academic and administrative staff the Shepparton campus offers students the opportunity to study in a setting that's quite different to a traditional university environment, with small class sizes, and a compact and congenial study environment.



## Albury-Wodonga

Pioneers of simulated teaching technologies, La Trobe's 26 hectare Albury-Wodonga campus, located in an important Australian regional centre on the border between New South Wales and Victoria, caters for nearly 1,200 students.

As well as teaching and research facilities, the campus has accommodation, childcare, banking facilities, a library, a café and a student association. Recent upgrades include a gym and fitness centre, a bookshop and café, with plans for new student accommodation.

# How to Apply

## Domestic students must apply through VTAC:

[www.vtac.edu.au](http://www.vtac.edu.au) or UAC [www.uac.edu.au](http://www.uac.edu.au)

Domestic applicants wishing to apply for the Bachelor of Nursing (Honours), Bachelor of Nursing (Post-Registration) or the Advanced Diploma in Nursing must apply directly through the Division of Nursing & Midwifery. Applications can be downloaded from:

[www.latrobe.edu.au/nursing/ProspectiveStudents/Undergraduate/](http://www.latrobe.edu.au/nursing/ProspectiveStudents/Undergraduate/)

For more information please go to [www.latrobe.edu.au/nursing/HowToApply](http://www.latrobe.edu.au/nursing/HowToApply)

International students must apply through via La Trobe International:

[www.latrobe.edu.au/international](http://www.latrobe.edu.au/international)

## Further Information

For further information on La Trobe's nursing courses, including admission requirements, course structure and unit descriptions, please go to:

[www.latrobe.edu.au/nursing](http://www.latrobe.edu.au/nursing)

Please note, entry requirements are subject to change due to the introduction of the new curriculum in 2009. Please refer to your VTAC guide and the La Trobe website for entry requirements.

# Contact Details

## Faculty of Health Sciences

Health Science Building 2  
La Trobe University  
VIC, 3086, AUSTRALIA  
T: +61 3 9479 3583  
F: +61 3 9479 2507  
E: [health@latrobe.edu.au](mailto:health@latrobe.edu.au)  
W: [www.latrobe.edu.au/health](http://www.latrobe.edu.au/health)

## La Trobe International

La Trobe University  
VIC, 3086, AUSTRALIA  
T: (+61 3) 9627 4805 Free call: 1800 619 768 (within Australia)  
F: +61 3 9479 3660  
E: [international@latrobe.edu.au](mailto:international@latrobe.edu.au)  
W: [www.latrobe.edu.au/international](http://www.latrobe.edu.au/international)

## Victorian Tertiary Admissions Centre (VTAC)

40 Park Street  
South Melbourne  
VIC, 3205, AUSTRALIA  
T: 1300 364 133  
W: [www.vtac.edu.au](http://www.vtac.edu.au)

## University Admissions Centre (UAC)\*

Quad 2, Australia Centre  
8 Parkview Drive  
Homebush Bay  
NSW, 2127, AUSTRALIA  
T: +61 2 9752 0200  
W: [www.uac.edu.au](http://www.uac.edu.au)

\* Mildura and Albury-Wodonga courses only

## Division of Nursing and Midwifery (by campus)

### Albury-Wodonga Campus

University Drive  
Wodonga  
VIC, 3690, AUSTRALIA  
Postal Address: (PO Box 821 Wodonga VIC 3689)  
T: +61 2 6024 9730  
E: [nursing.aw@latrobe.edu.au](mailto:nursing.aw@latrobe.edu.au)  
W: [www.latrobe.edu.au/nursing/aw](http://www.latrobe.edu.au/nursing/aw)

### Bendigo Campus

Quad 2  
Edwards Road  
Flora Hill Bendigo,  
VIC, 3552, AUSTRALIA  
Postal Address: (PO Box 199, Bendigo, VIC, 3552)  
T: +61 3 5444 7383  
E: [k.stubbings@latrobe.edu.au](mailto:k.stubbings@latrobe.edu.au)  
W: [www.latrobe.edu.au/nursing/Campuses/Bendigo](http://www.latrobe.edu.au/nursing/Campuses/Bendigo)

### Bundoora Campus

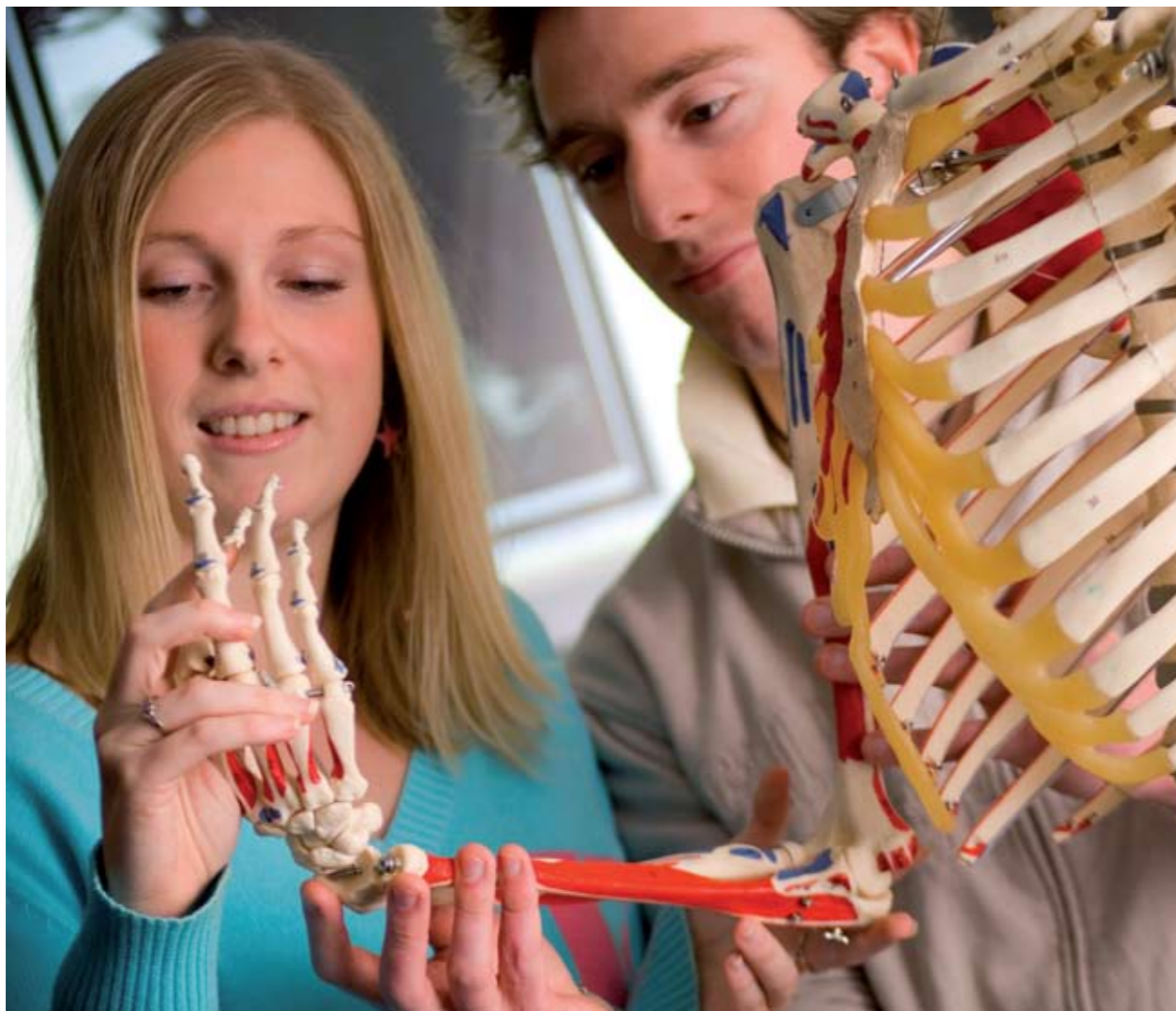
George Singer Building, Level 3  
La Trobe University  
VIC, 3086, AUSTRALIA  
T: +61 3 9479 5950  
E: [nurrec@latrobe.edu.au](mailto:nurrec@latrobe.edu.au)  
W: [www.latrobe.edu.au/nursing](http://www.latrobe.edu.au/nursing)

### Mildura Campus

Benetook Avenue  
Mildura, VIC, 3502, AUSTRALIA  
Postal Address: (PO Box 4095 Mildura VIC 3502)  
T: +61 3 9479 5950  
E: [nurrec@latrobe.edu.au](mailto:nurrec@latrobe.edu.au)  
W: [www.latrobe.edu.au/nursing/Campuses/Mildura](http://www.latrobe.edu.au/nursing/Campuses/Mildura)

### Shepparton Campus

127 Welsford Street  
Shepparton VIC 3632  
T: +61 3 5821 8316  
E: [nursing.aw@latrobe.edu.au](mailto:nursing.aw@latrobe.edu.au)  
W: [www.latrobe.edu.au/nursing/Campuses/Shepparton](http://www.latrobe.edu.au/nursing/Campuses/Shepparton)





## University Open Days

All information regarding open days can be located at  
[www.latrobe.edu.au/study](http://www.latrobe.edu.au/study)

## Future Students Centre

La Trobe University Victoria, Australia

Contact us for all course enquiries

**Phone** 1300 135 045

**Fax** 03 9479 1989

**Email** [www.latrobe.edu.au/ask](http://www.latrobe.edu.au/ask)

---

Sign up for course and event updates:

[www.latrobe.edu.au/keepintouch](http://www.latrobe.edu.au/keepintouch)

[www.latrobe.edu.au/nursing](http://www.latrobe.edu.au/nursing)



---

**Disclaimer** Information in this brochure is current as of March 2008. Although every effort has been made to ensure that the material in this publication was correct at the time of printing, the University accepts no responsibility for the accuracy or the completeness of information. The University reserves the right to alter, amend or withdraw courses listed in this guide without notice. Users of this publication are advised to check course information with the relevant faculty or department before acting on the information published in this guide. Course information will be kept up to date in CourseFinder, the University's searchable database of courses, located at [www.latrobe.edu.au](http://www.latrobe.edu.au)