

Nursing and Midwifery

Master of Nursing (Cancer/Palliative Care)



The Cancer/Palliative Care program is designed to prepare qualified nurses to extend and deepen their knowledge of cancer/palliative care nursing, as it occurs in a variety of settings, and as it relates to advanced nursing knowledge. Students will be expected to work in an area of cancer/palliative care nursing for the duration of the program.

The purpose of this program is to provide nurses with the theoretical and clinical preparation to fulfil leadership roles in the delivery of best practice within the field of cancer and palliative care. As Masters prepared practitioners graduates of this program will be in a strategic position to develop new models of care and dynamically lead changes in practice.

Program Structure

The Masters program is a 180 credit point program with exit options available at either the Graduate Certificate or the Postgraduate Diploma level.

Students wishing to complete the Masters program are required

to complete 60 credit points at level 4 (Certificate/Diploma level subjects) and 120 credit points at level 5 (Masters level subjects).

Graduate Certificate (60 Credit Points)

Students are required to complete the Comprehensive Health Assessment subject and two speciality subjects in order to exit with a Graduate Certificate qualification.

Postgraduate Diploma (120 Credit Points)

The postgraduate diploma program requires students to complete the certificate subjects and an additional 60 credit points which would normally include the Clinical Audit subject and two elective subjects in their chosen area.

Masters (180 Credit Points)

At the Masters level, students can choose to complete the final 60 credit points from one of the following options:

- Clinical project
- Minor thesis
- Speciality subjects in their chosen area.

Please refer to our website for an updated list of available subjects. www.latrobe.edu.au/nursing/ProspectiveStudents/

**If you would like to vary from the recommended structure above, please discuss with the Postgraduate Course Coordinator.*

Entry Requirements

- Hold current Division 1 Registration with NBV or equivalent
- Have at least one year of recent relevant nursing experience
- Hold a degree or diploma from a college or university
- Employed by an agency approved by the Course Coordinator

Prospective students need to ensure they have access to an appropriate clinical environment for this course.

Nursing and Midwifery

Duration

The Graduate Certificate program (3 subjects) may be taken over one year part-time.

The Postgraduate Diploma program (6 subjects) may be taken over one year full-time or the part-time equivalent.

The Masters program (9 subjects) may be taken over one and half years full-time or the part-time equivalent.

Delivery Mode

This program is offered via distance education which caters for people who may be working, living interstate or who may not be in a position to attend classes during normal working hours.

At the Diploma and Master's level, elective subjects of study are offered in a variety of delivery modes such as face-to-face, on-line or independent study.

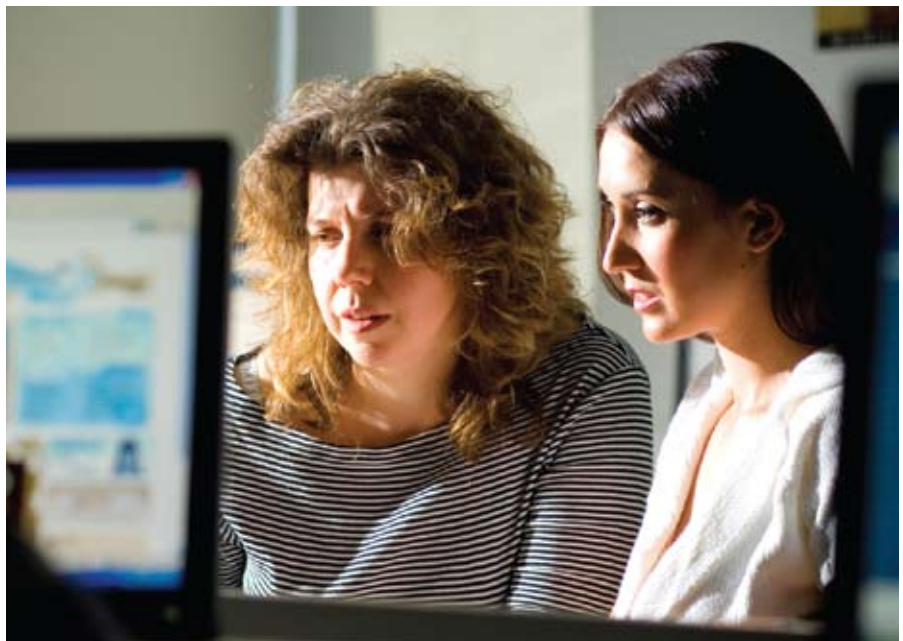
Some online subjects may require Internet access with broadband speed.

Tuition Fees

The cost of this program can be found at www.latrobe.edu.au/nursing/ProspectiveStudents

Fee-paying places and a limited number of Commonwealth Supported Places (CSP) are available. Australian citizens are eligible to defer tuition fees by using the HECS-Help or FEE-Help loan schemes. Further information on HECS-Help and FEE-Help can be found at www.goingtouni.gov.au

To find out the advantages of a fee-paying place please refer to our Tax Benefits brochure.



Scholarship Information

Every year, the Department of Human Services (DHS) Nurse Policy Branch may offer scholarships for postgraduate nursing students. If you are interested in a scholarship we recommend you consult the DHS postgraduate scholarships website – www.health.vic.gov.au/nursing/furthering/postgrad.htm or ring the Nurse Policy Branch on 1300 662 685 for more information.

Some scholarships are also available through ANF, RCNA and CNSA. Please check websites for details.

The Division

The Division is one of the four divisions in the Faculty of Health Sciences.

The Division of Nursing and Midwifery's origins as a provider of high level nursing education extend back to 1948 as the College of Nursing, Australia. We therefore have a long and well regarded history as Australia's oldest tertiary Division of Nursing.

Our extensive history has enabled the Division to develop a wide range of national and international links with

leading healthcare organisations. This has fostered a tradition of innovation, excellence and dynamism in nursing and midwifery research and education.

La Trobe University

Established in 1964, La Trobe University is one of Australia's largest, most respected and fastest growing universities. La Trobe has earned a reputation for excellence in teaching and research. Its programs and courses are recognised by international accreditation authorities, and held in high regard by overseas companies and educators.

Further Information and How to Apply

Division of Nursing and Midwifery
 La Trobe University
 Victoria 3086 Australia
 Phone: +61 3 9479 5950
 Fax: +61 3 9479 5988
 Email: nurrec@latrobe.edu.au
www.latrobe.edu.au/nursing