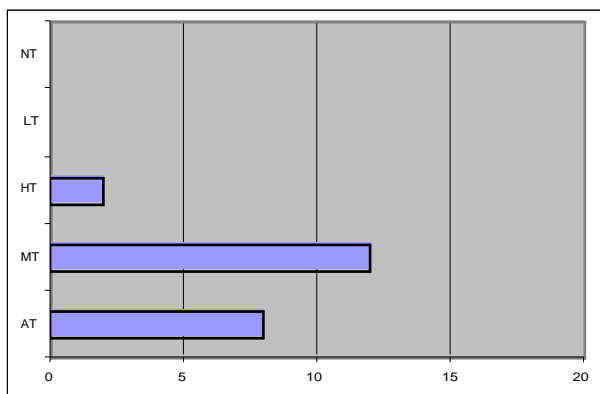


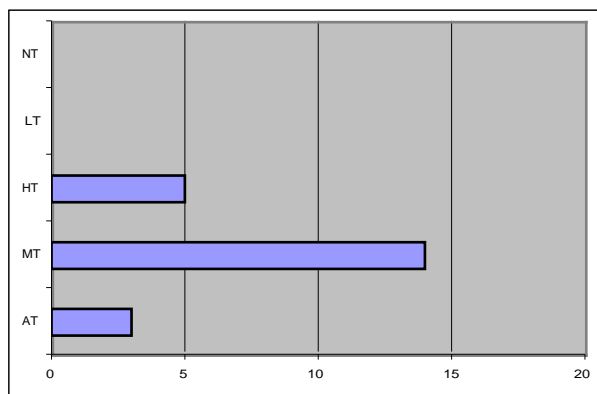
MIC11IEP - STUDENT RESPONSES 2005

Students have been asked to comment on the following statements, indicating whether the statements are - True at all times (AT), True most of the time (MT), True half of the time (HT), True little of the time (LT), or True none of the time (NT).

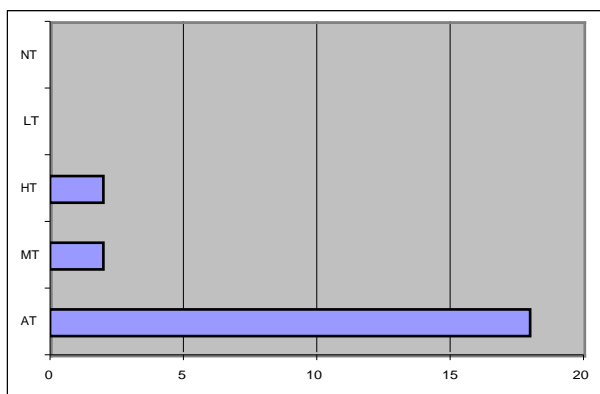
1. The subject is interesting



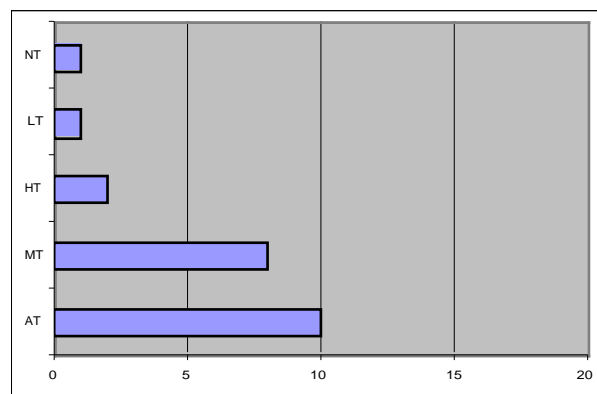
2. The aims were made clear



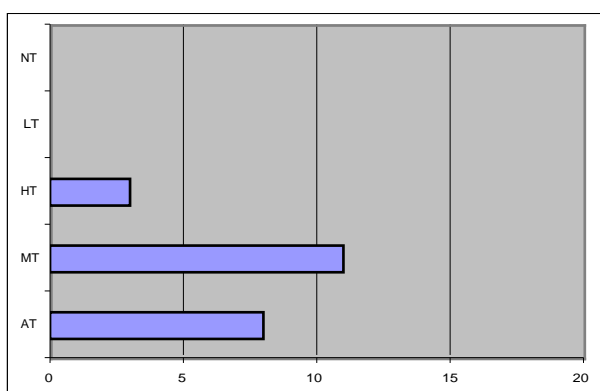
3. The workload is manageable



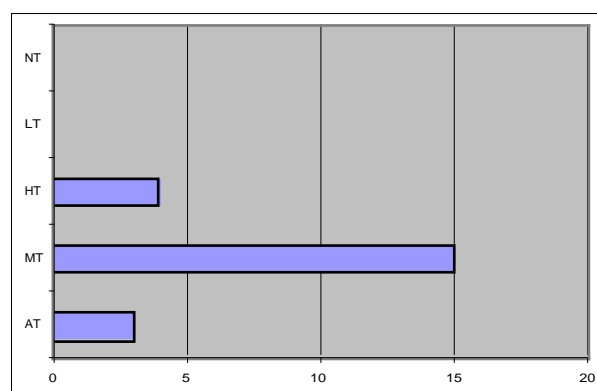
4. The amount and type of assessment is appropriate for this unit



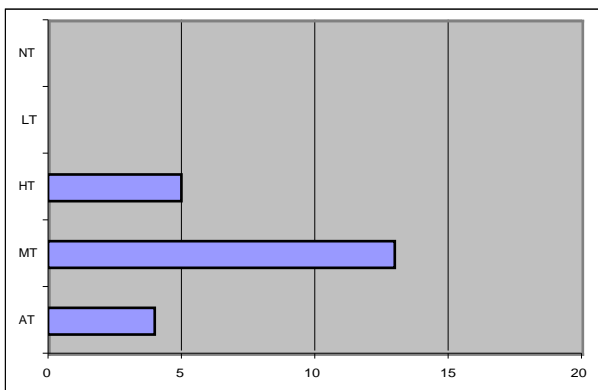
5. The level of support, help and advice is appropriate for this unit



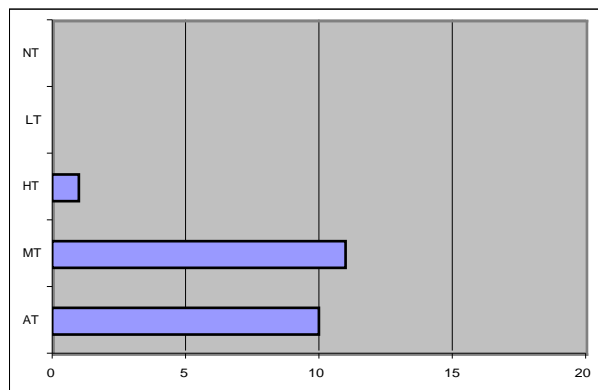
6. The lectures were well prepared and interesting



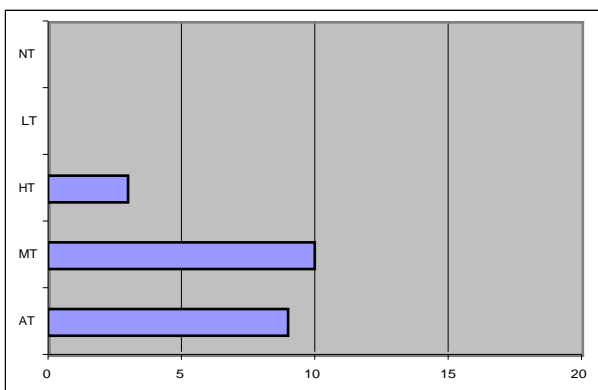
7. Practical classes were well prepared and interesting



8. Overall, the quality of teaching was high



9. All things considered, how would you rate this unit?
I was satisfied with this unit.



Total surveys returned: 22