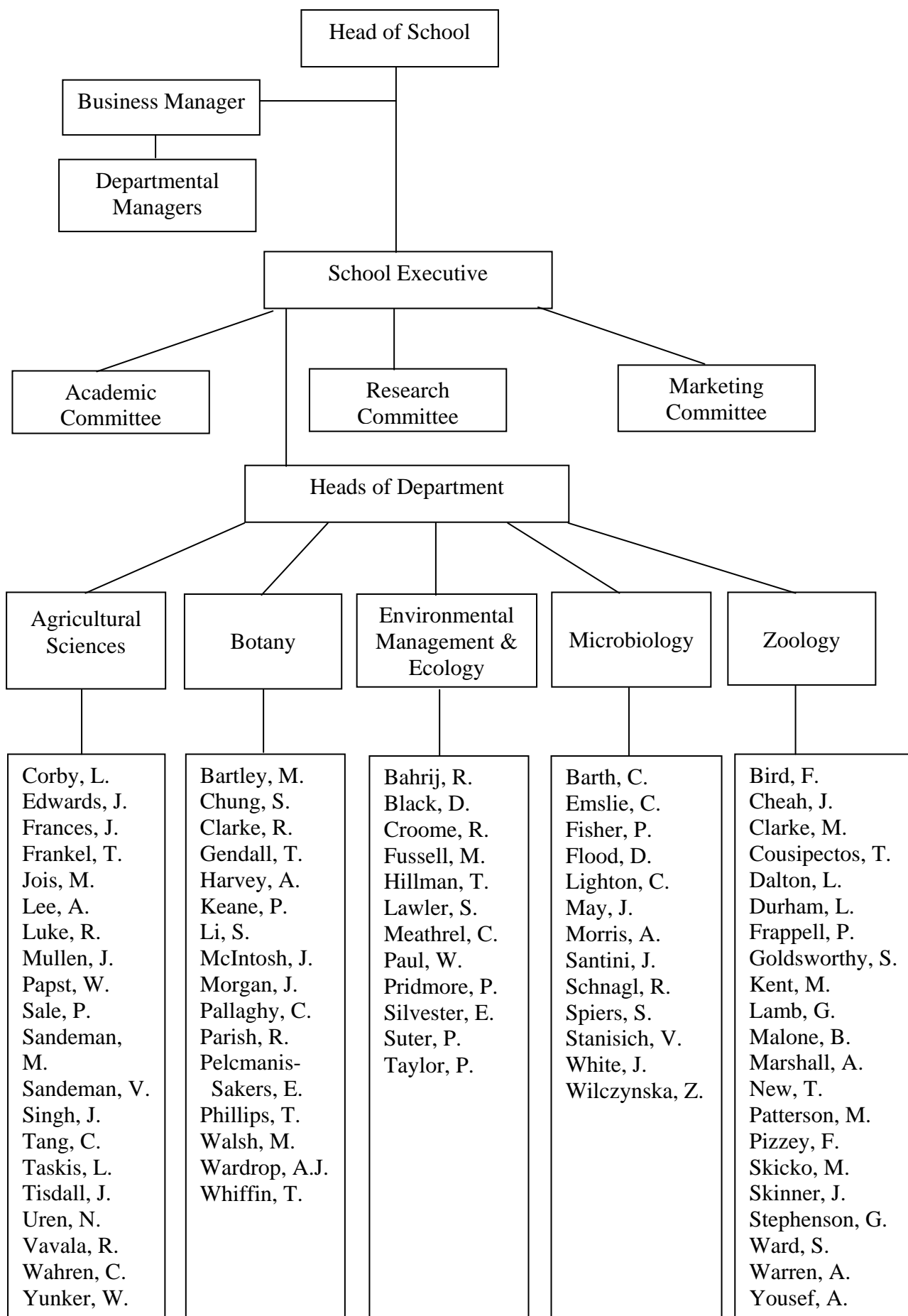


1. Governance



School of Life Sciences Executive
--

Composition:

- A. Head of School (Chair)
- B. Heads of the five departments
- C. One academic staff member of each of the four Bundoora departments
- D. The School's Business Manager

Membership:

- A. Professor Roger W. Parish
- B. Assoc. Prof. Mark Sandeman (Agricultural Sc.)
- B. Assoc. Prof. Peter Frappell (Zoology)
- B. Assoc. Prof. Paul Fisher (Microbiology)
- B. Dr. Phil Suter (Environmental Management & Ecology)
- C. Dr. Trevor Whiffin (Botany)
- C. Dr. Vilma Stanisich (Microbiology)
- C. Dr. Peter Sale (Agricultural Sc.)
- C. Prof. George Stephenson (Zoology)
- D. Mr Ron Clarke

Terms of Reference:

- a. Develop, implement and monitor a Strategic Plan.
- b. Receive and discuss regular reports from the three School committees.
- c. Manage the distribution of the School Budget to departments including any funds reserved for special projects.
- d. Receive reports from the Heads of Departments regarding issues arising in staff meetings.
- e. Report matters discussed and decisions taken at meetings to all members of the School.

<p style="text-align: center;">Academic Committee</p>
--

Composition:

- A. Chair (a Head of Department)
- B. One member of academic staff from each of the five departments.

Membership:

- A. Assoc. Prof. M. Sandeman
- B.

Terms of Reference:

- 1. Implement the relevant strategies in the Strategic Plan.

<p style="text-align: center;">Marketing Committee</p>

Composition:

- A. Chair (a member of the School Executive)
- B. One member of academic staff from each of the five departments.

Membership:

- A. Assoc. Prof. Peter Sale (Ag. Sc.)
- B. Dr John Morgan (Botany)
- B. Dr. Christian Barth (Microbiology)
- B. Dr. Simon Goldsworthy (Zoology)
- B. Dr. Phil Suter (EME)

Terms of Reference:

- A. Oversee the implementation of the relevant strategies in the Strategic Plan.
- B. Identify the need for and develop new strategies to improve the effectiveness of recruiting to the community and secondary schools.

<p style="text-align: center;">Research Committee</p>
--

Composition:

- A. Chair (a member of the School Executive & representative on the FRAGS committee).
- B. One member of academic staff from each of the five departments.

Membership:

- A. Prof. G. Stephenson (Zoology)
- B. Dr. R. Luke (Ag. Sc.)
- B. Dr. C. Pallaghy (Botany)
- B. Dr. V. Stanisich (Microbiology)
- B. Prof. G. Stephenson (Zoology)

Terms of Reference:

1. To consider and advise the HOS and the School Executive Committee in all matters relating to research.
2. To promote research and to set research priorities within the School.
3. To monitor the research performance of the School.
4. To develop the policy for the distribution of block research funds received by the School from the Faculty.
5. To develop the policy related to the conduct of research in the School.
6. To co-ordinate and facilitate the in-house review of proposals for funding from external bodies from members of the School.
7. To consider policy matters related to post-graduate research students and research personnel in the School.
8. To monitor the progress of post-graduate research students in the School.