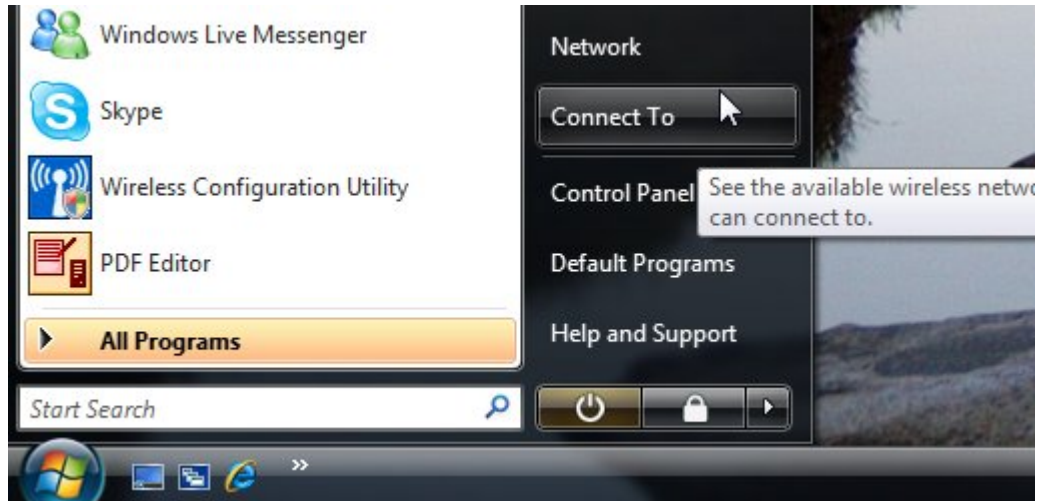
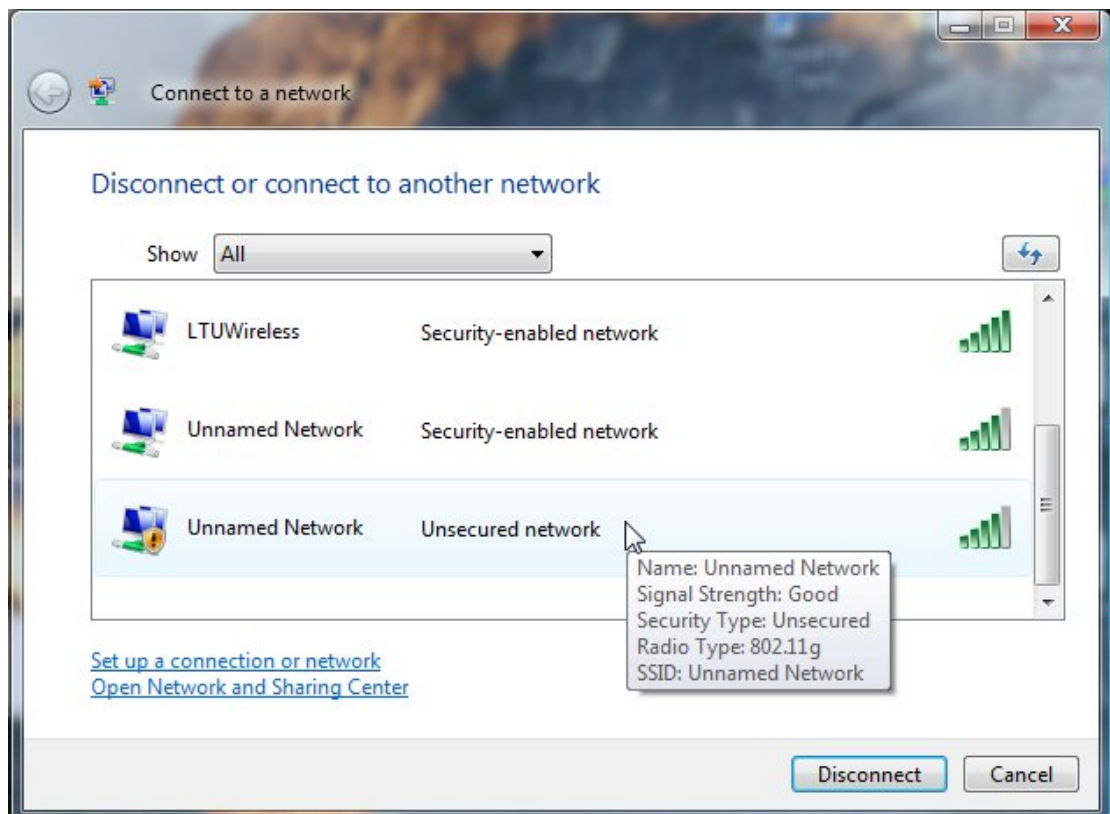


Steps to Connect to La Trobe Conference Wireless Network.

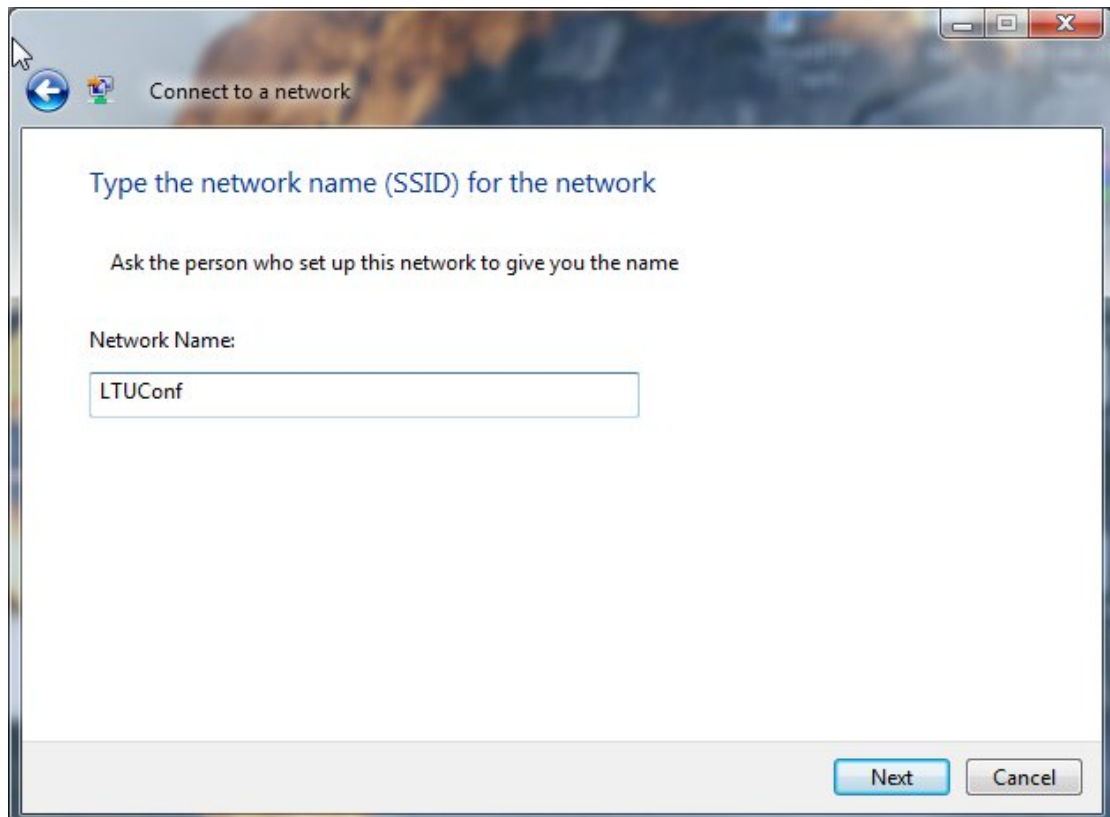
1. Click on the **Windows** Button and then Click on **Connect To**



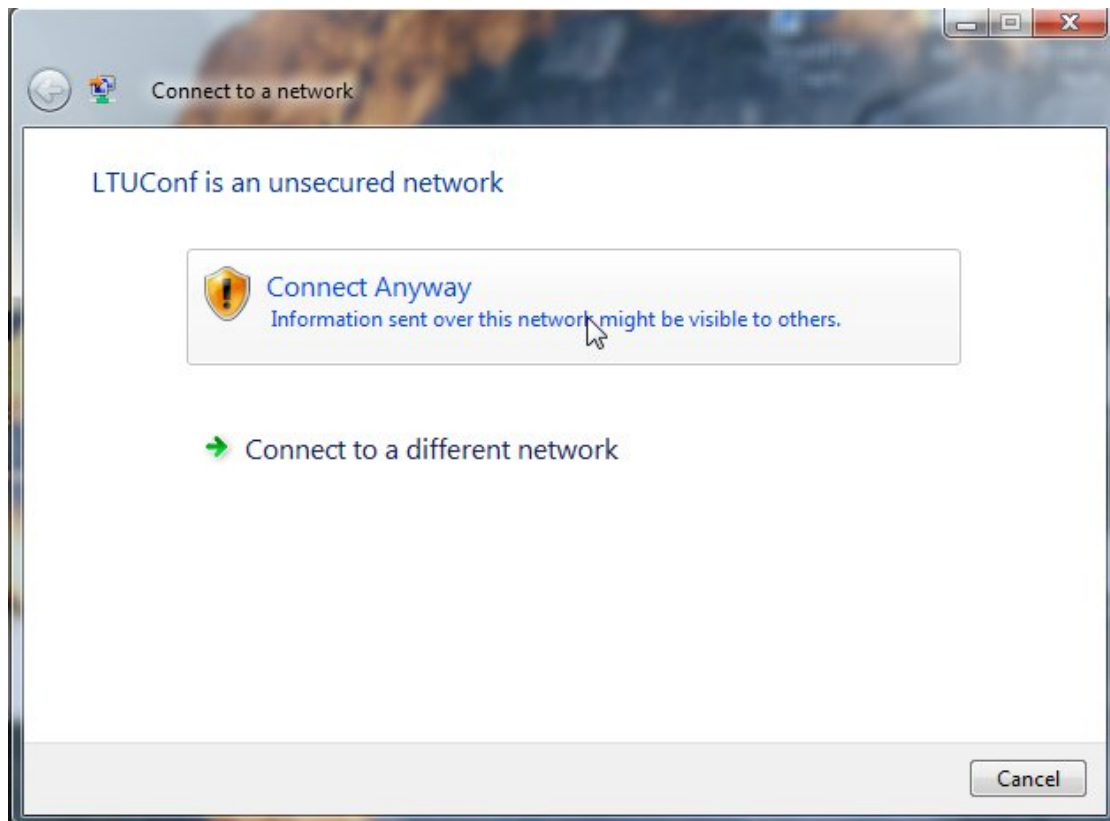
2. You should see “**Unnamed Network – Unsecured network**” in the list of Wireless Networks. **Click** on it to highlight and press **Connect**.



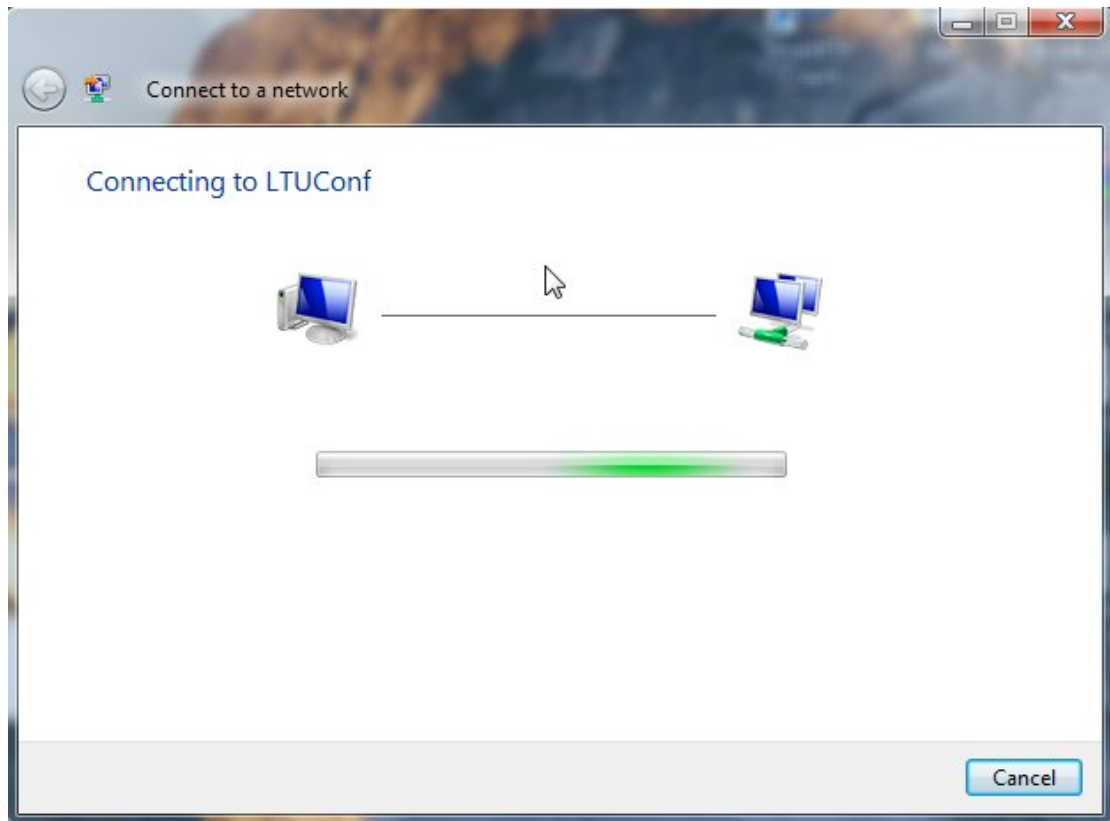
3. Enter in **LTUConf** (it is case sensitive) as the Network name and Click **Next**



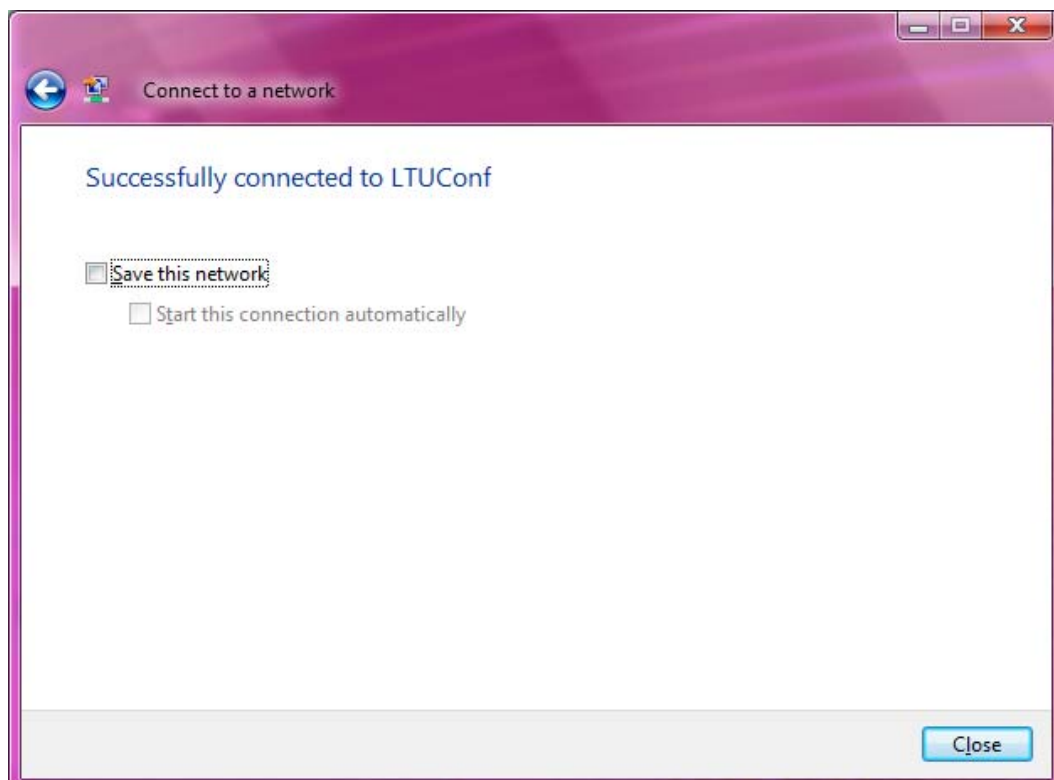
4. You will then get prompted that LTUConf is an unsecure network. Click on **Connect Anyway**.



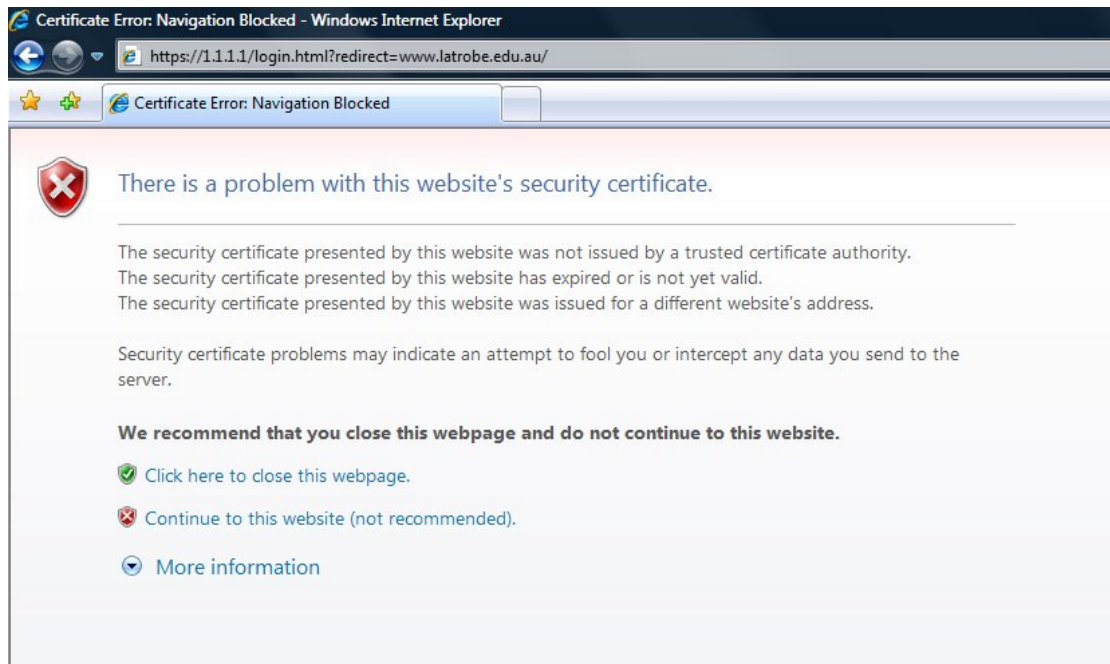
5. The following screen will appear while your pc is attempting to connect to the network.



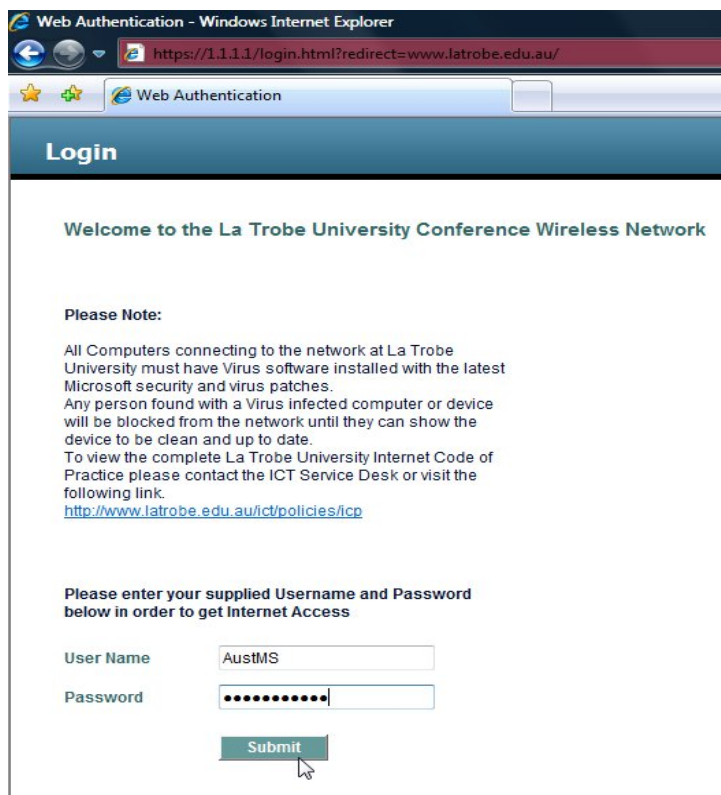
6. Once the connection is established the following screen will appear. Click **Close** as there is no need to save this network connection.



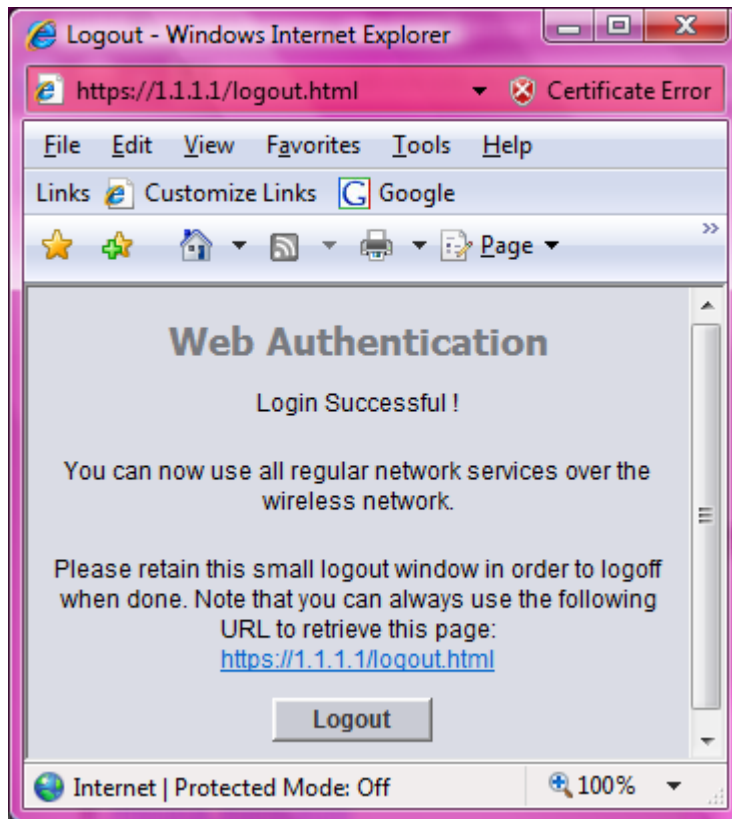
7. Open up your web browser application. (E.g. **Internet Explorer**). The screen below may appear for security certificates. Click on **Continue to this website**.



8. You will then be directed to a login page. Log in with the credentials provided and click on **Submit**.



9. A Web Authentication window will display to confirm you have successfully authenticated. Keep this open and minimised as this is the way to logout when you have completed your session. If you accidentally close it you can access it again by accessing the following URL <https://1.1.1.1/logout.html>



10. You will then get redirected to the AustMS conference website and you will now have internet access.

