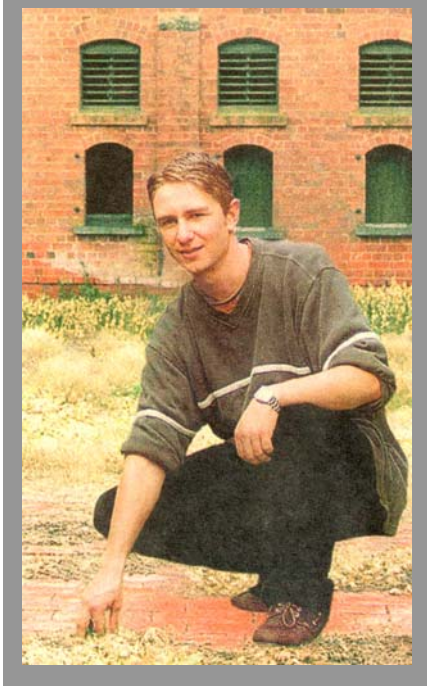




School of Historical and European Studies



Archaeology Program

Lyndon Patterson

Bachelor of Arts (Hons)/Science 2001

Lyndon combined arts and sciences in his undergraduate degree, and studies zoology and genetics as well as Aboriginal and colonial archaeology. Having grown up in north-western Victoria, Lyndon used his knowledge of rural life in his Honours research on the history and architecture of woolsheds.

Lyndon has worked as a volunteer on a number of projects while studying, including at Port Arthur in Tasmania, at a Bronze Age settlement in Cyprus, and also Casselden Place in central Melbourne. Lyndon also had a student internship at the Lucas Heights Nuclear Facility in Sydney where he developed skills in radiocarbon dating.

Since graduating, Lyndon has worked for a prominent local heritage firm, where he undertakes heritage assessment of land proposed for development. Lyndon conducts historical research on sites and properties, carries out field surveys looking for artefacts and also works on excavations.

“The variety in my work combines outdoor and indoor activities and a range of tasks. I enjoy working with different stakeholders for a successful heritage outcome.”

Disclaimer: The information contained in this publication is indicative only. The University reserves the right, before or after enrolment, to make any changes to the information, including but not limited to discontinuing or varying courses, subjects (units), staff, assessment and admission requirements. The University does not give any warranties in relation to the accuracy and completeness of the contents; nor does it accept responsibility for any loss or damage occasioned by use of the information contained in this publication. For course information updates, visit: www.latrobe.edu.au/coursefinder

CRICOS Provider 00115M