



General Practice and Community Health Forum

Dr Richard Bills

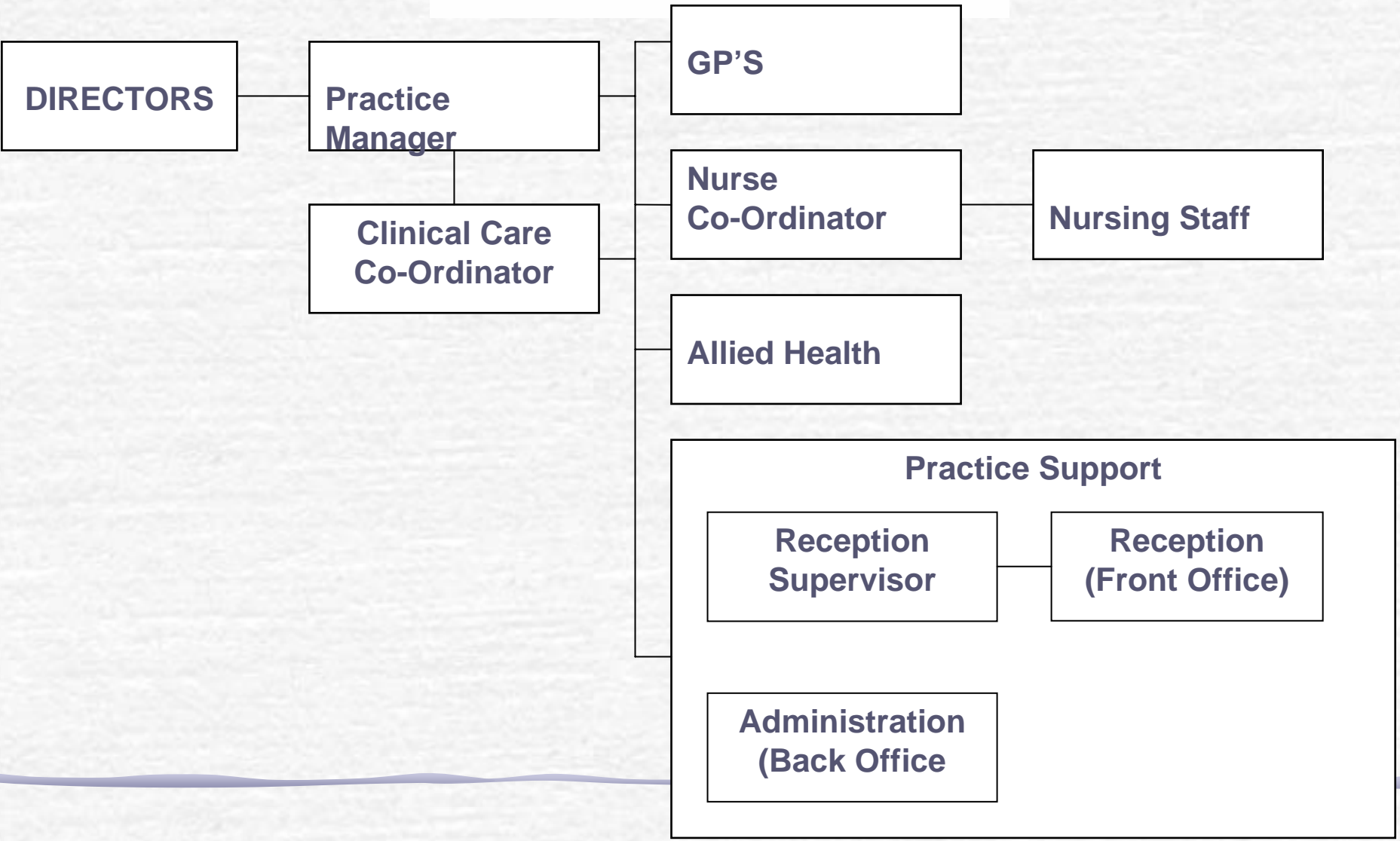
Brooke Street Medical Centre

Woodend

E: rbills@bsmc.net.au



THE *B*ROOKE STREET MEDICAL CENTRE





- ✓ 12 Part-time GPs
- ✓ 2 DNEs
- ✓ 1 ANE and trained QUIT counsellor
- ✓ 3 wound care nurses
- ✓ 1 dietitian
- ✓ 2 physios*
- ✓ 2 psychologists*
- ✓ 1 podiatrist*

Team Care in Primary Care

- ☛ Access to AHPs
- ☛ Employee model
- ☛ Costs to patients
- ☛ MBS (EPC) funding
- ☛ IT/IM issues SCT tools;
PKI; VPNs
- ☛ Single IM system
- ☛ ?leader/co-ordinator
- ☛ ?multipoint entry

Non urban issues (?)

➤ Attracting AHPs –

- employee
- contract
- 'shared' models (CHCs, Private, Local Hospital)

➤ Attractions for AHPs

- The world of longitudinal, holistic care ('ownership')

Who(else) benefits?

- ☛ The patient
- ☛ The GPs
- ☛ Other AHPs in the practice
- ☛ The bottom line?

At what costs?

- ☛ “long term practice investment”
- ‘holistic care’
- Community perception of practice [and staff]
- Better chronic disease management
- Practitioner sanity !
- “Warm fuzziness” (??)

Limitations?

- ☛ Physical space
- ☛ Priorities of practice managers/ment
- ☛ Belief in the team model – CULTURE!