

Academic Board: “State of the University”

Professor Paul Johnson
Vice-Chancellor

10 November 2010

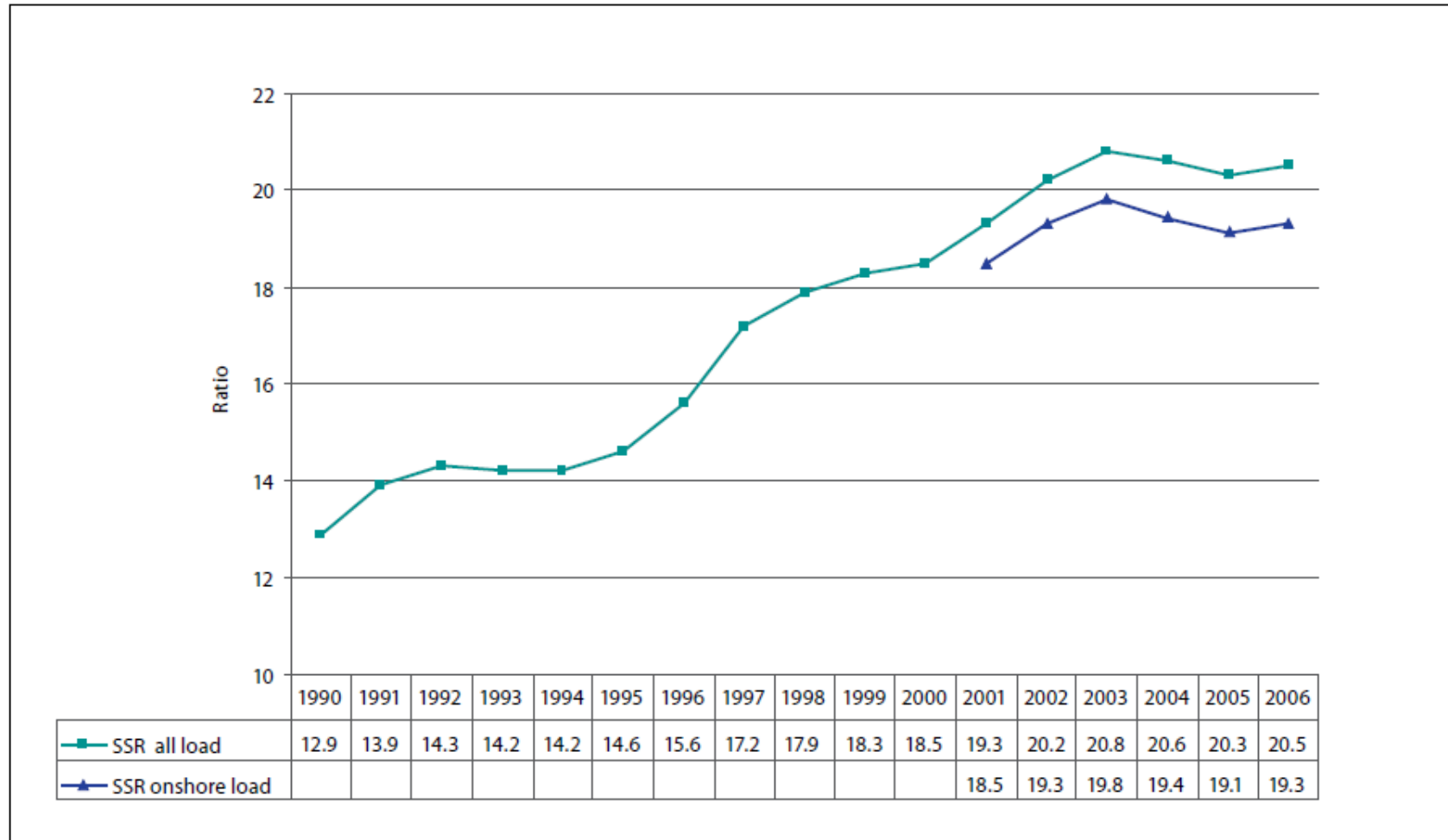
Contents

- Changing external context
- Teaching and Learning
- Student experience
- Research and Research Training
- International activities
- Staff related
- Financial performance
- Sustainability
- Administrative Reform

Changing external context

Changing external environment:

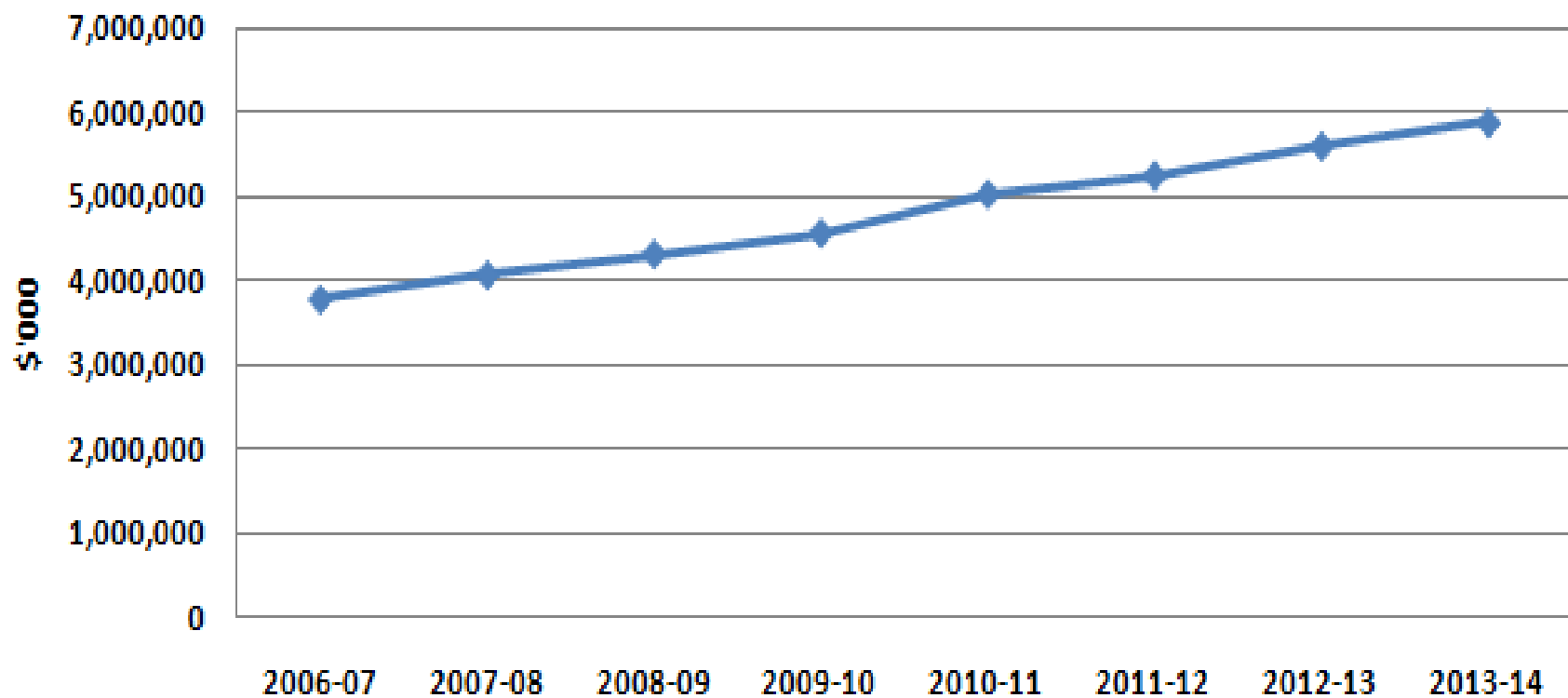
Universities Australia student-to-teacher ratio, 1990 to 2006



Source: Universities Australia 2008a, 2006 Student to Teacher Ratio For Academic Staff with Teaching Function, October. UA cited sources are DEEWR Higher Education Student and Staff Statistics 1990 to 2000 and DEST Unit Record Files 2001 – 2006; Bond University Management Report August 2007 (data for 2001 to 2006 only).

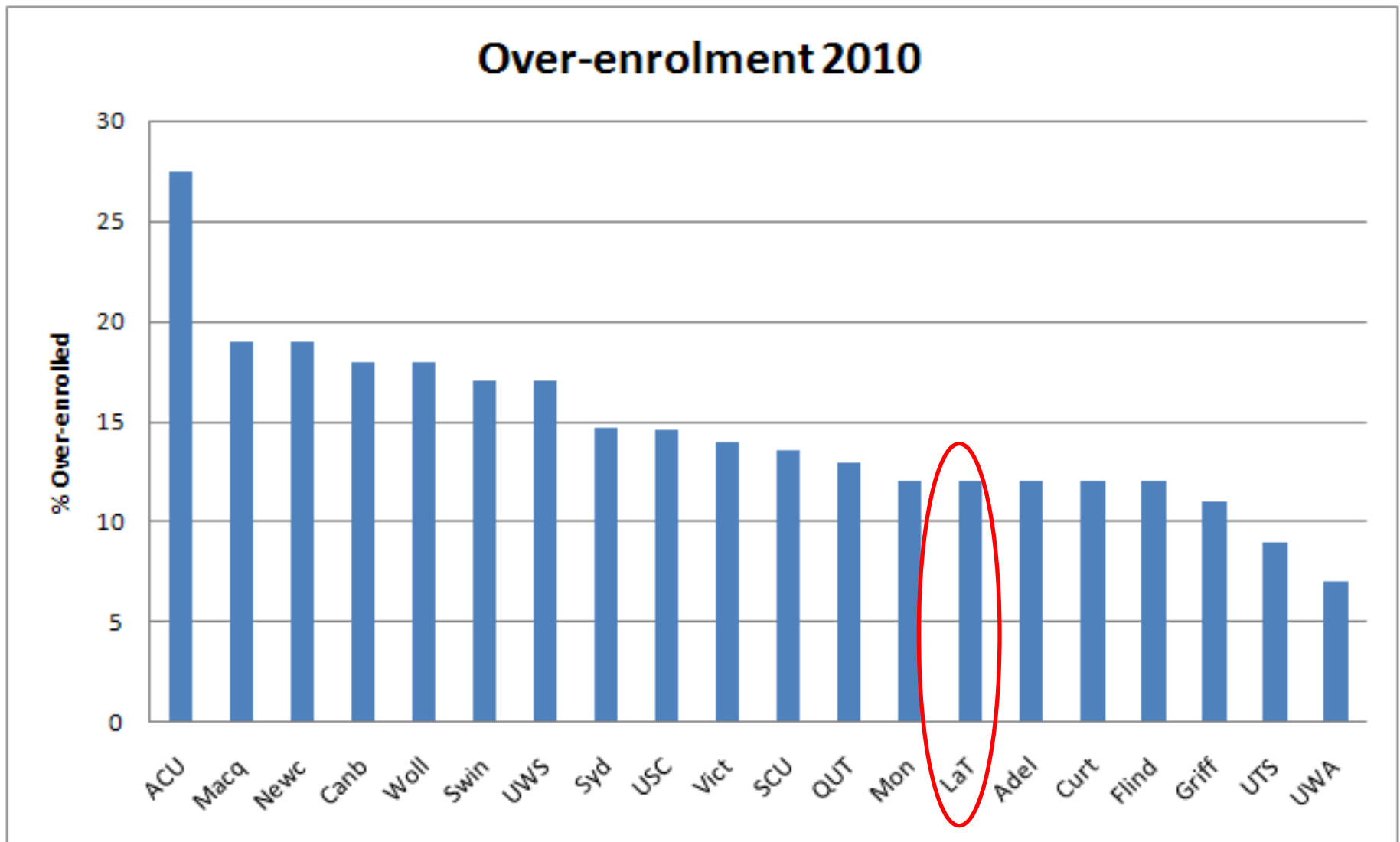
Changing external environment: Commonwealth Grant Scheme Funding

Growth in CGS funding



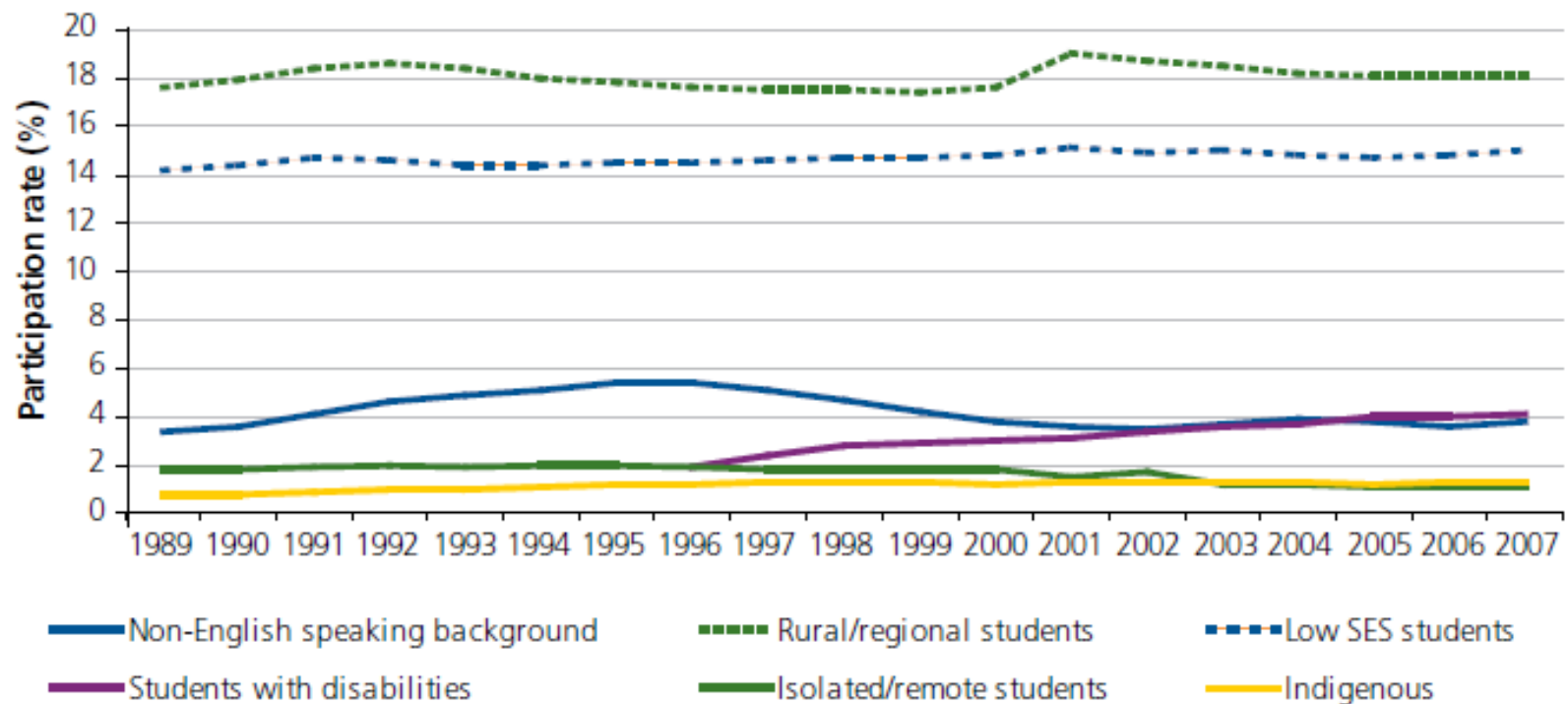
Source: DEEWR Budget statements, \$2010

Changing external environment: Over enrolment patterns across the sector



Source: Australian Financial Review

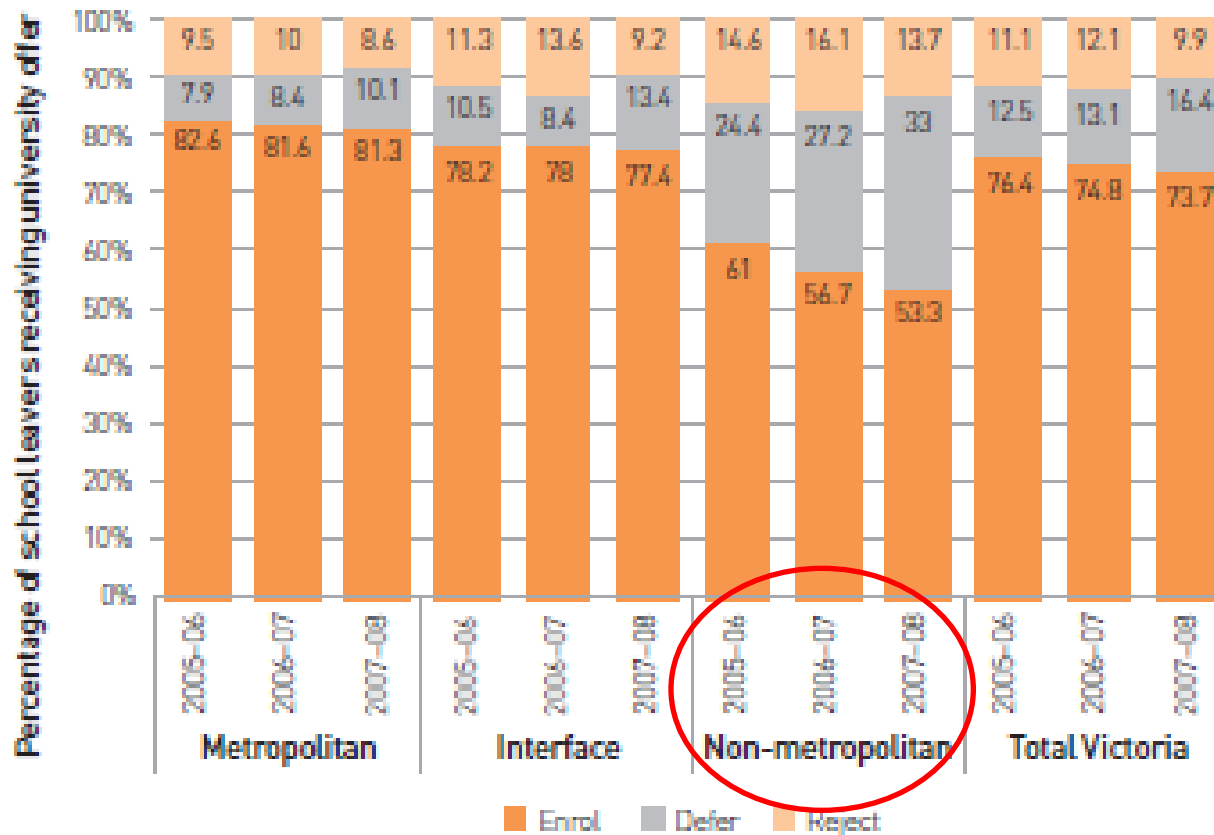
Changing external environment: Participation rates by equity group 1989-2007



Note: a) Definitions for regional/rural and isolated/remote students were altered in 2001 causing a break in series,
b) Post-2001 is based on 2006 Census SES postcode allocations, whereas prior years are based on earlier Census SES postcode allocations

Source: DEEWR (Equity Performance Indicators - national indicators), various years

School leaver offer recipients enrolling in, deferring and rejecting University places, by home location (2005-2006; 2007-2008)



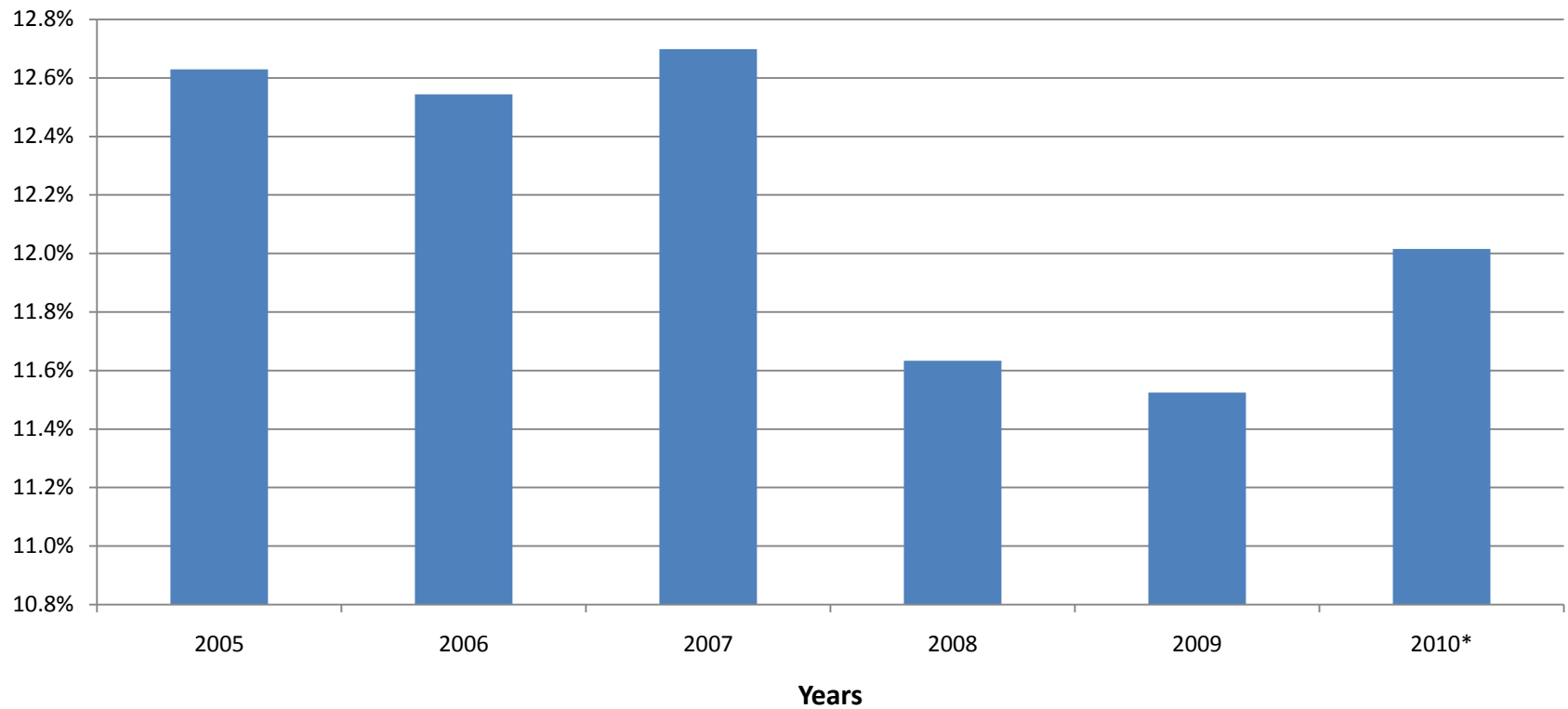
Source: 'Report Advising on the Development of the Victorian Tertiary Education Plan' (Kwong Lee Dow et al), December 2009

Teaching and Learning



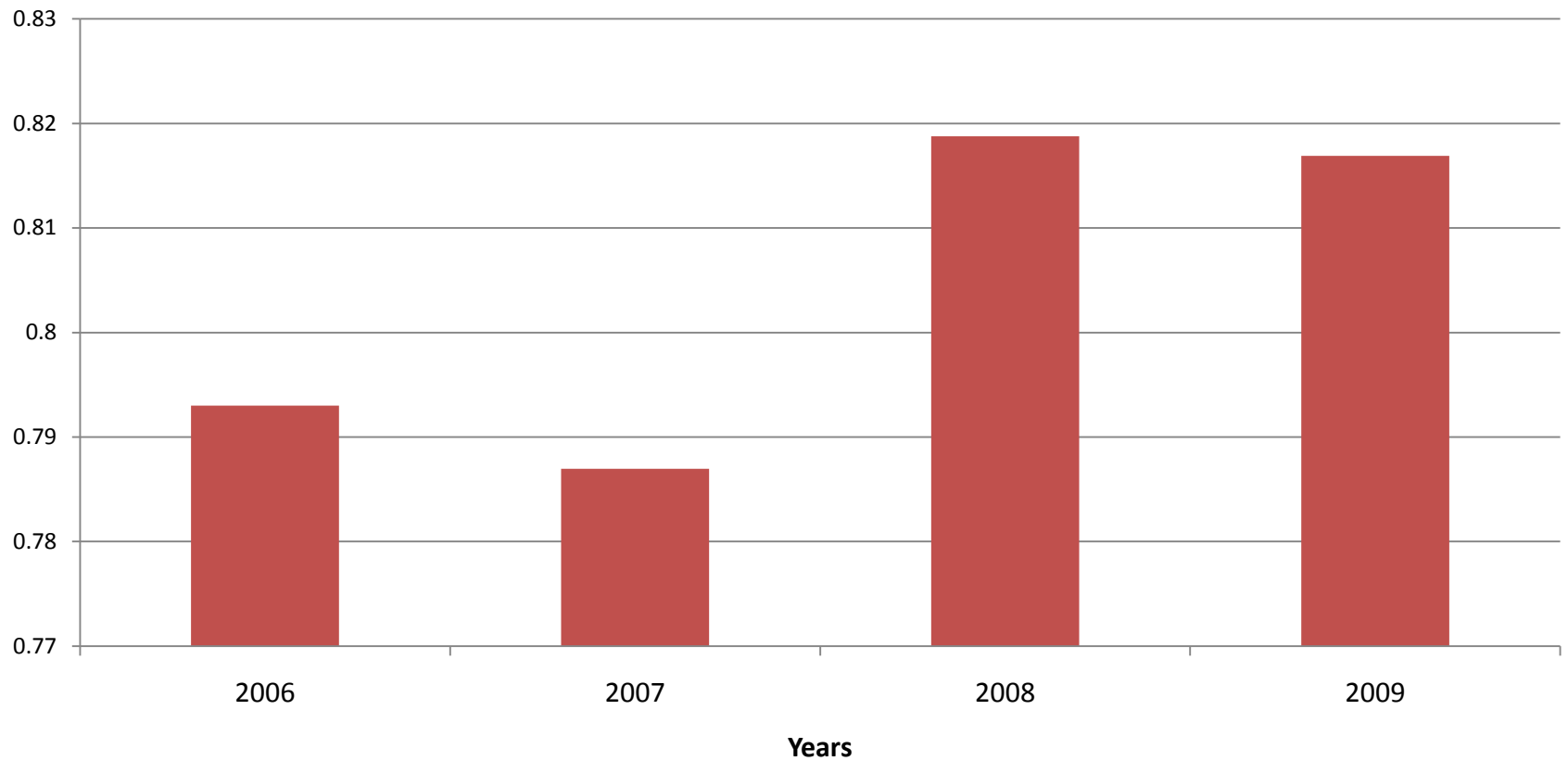
Percentage of VTAC Preferences

**Percentage of La Trobe University final VTAC Preferences 1 to 4 –
years 2005 to 2010**



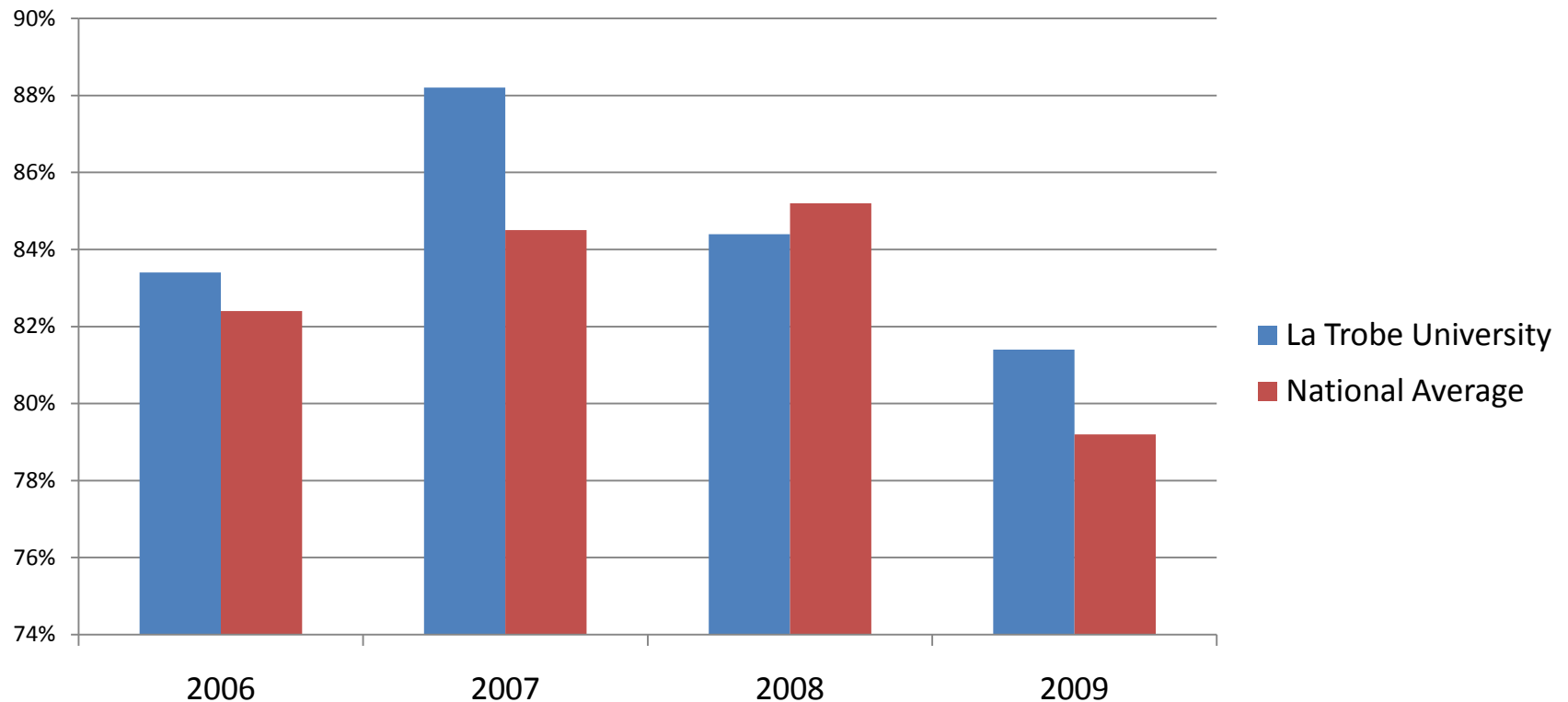
Retention

La Trobe University Apparent Retention Rate – years 2006 to 2009



Graduate Destination Survey: Graduates in full time employment

Percentage of La Trobe University graduates in full time work compared to national average - years 2006 to 2009



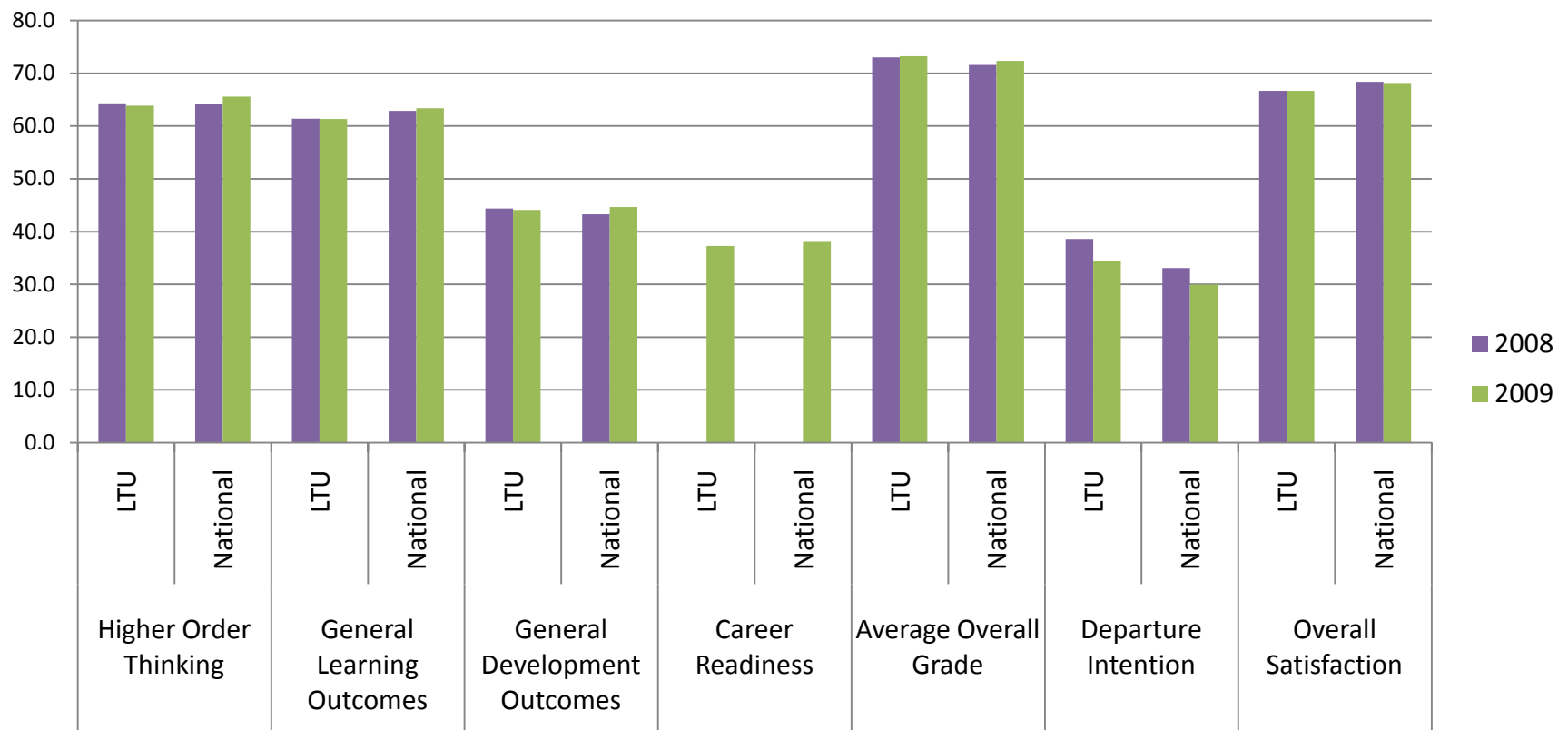
Source: Australian Graduate Survey 2006 - 2009

Student Experience

Australasian Survey of Student Engagement

Outcome scales

La Trobe University AUSSE outcome core scale mean scores compared to national average - year 2008 and 2009

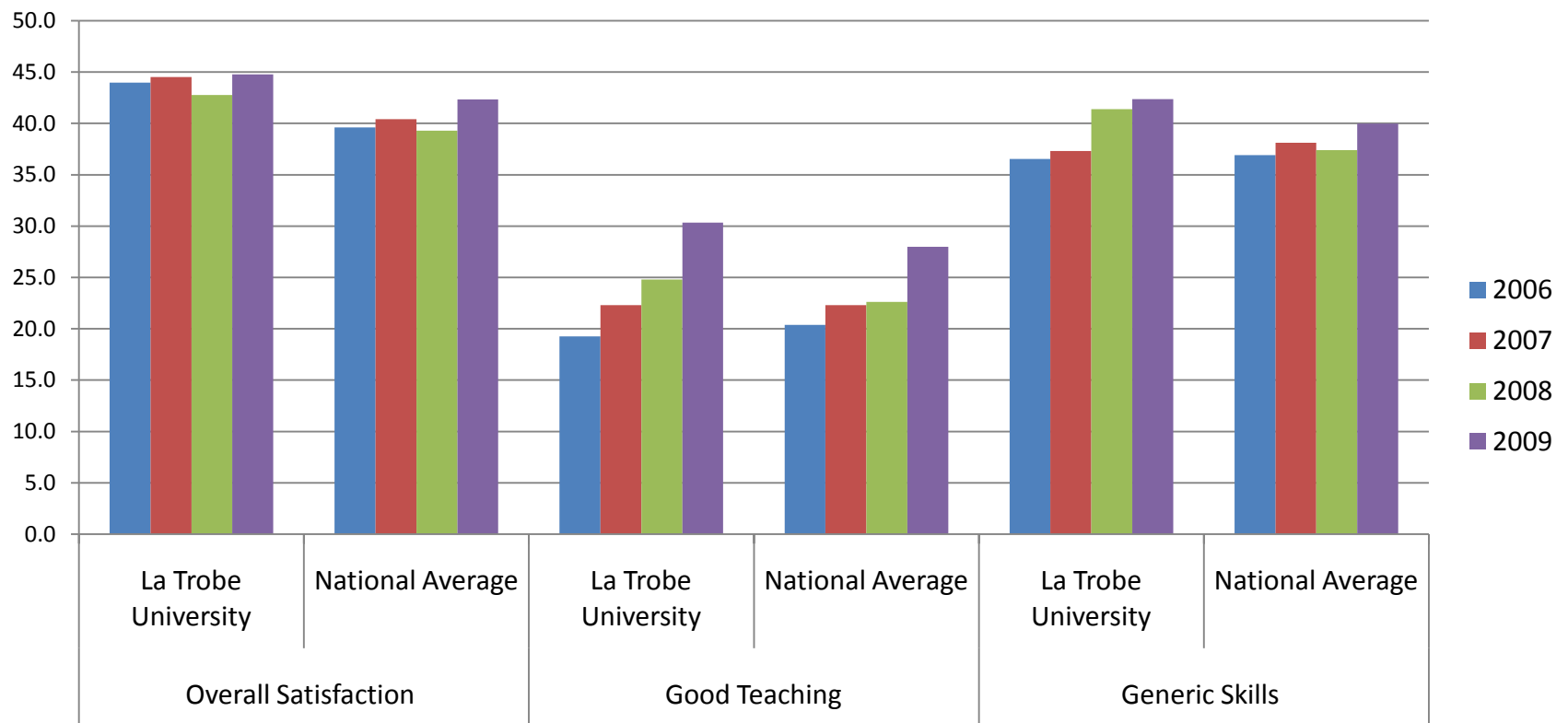


Source – Australasian Survey of Student Engagement



Course Experience Questionnaire

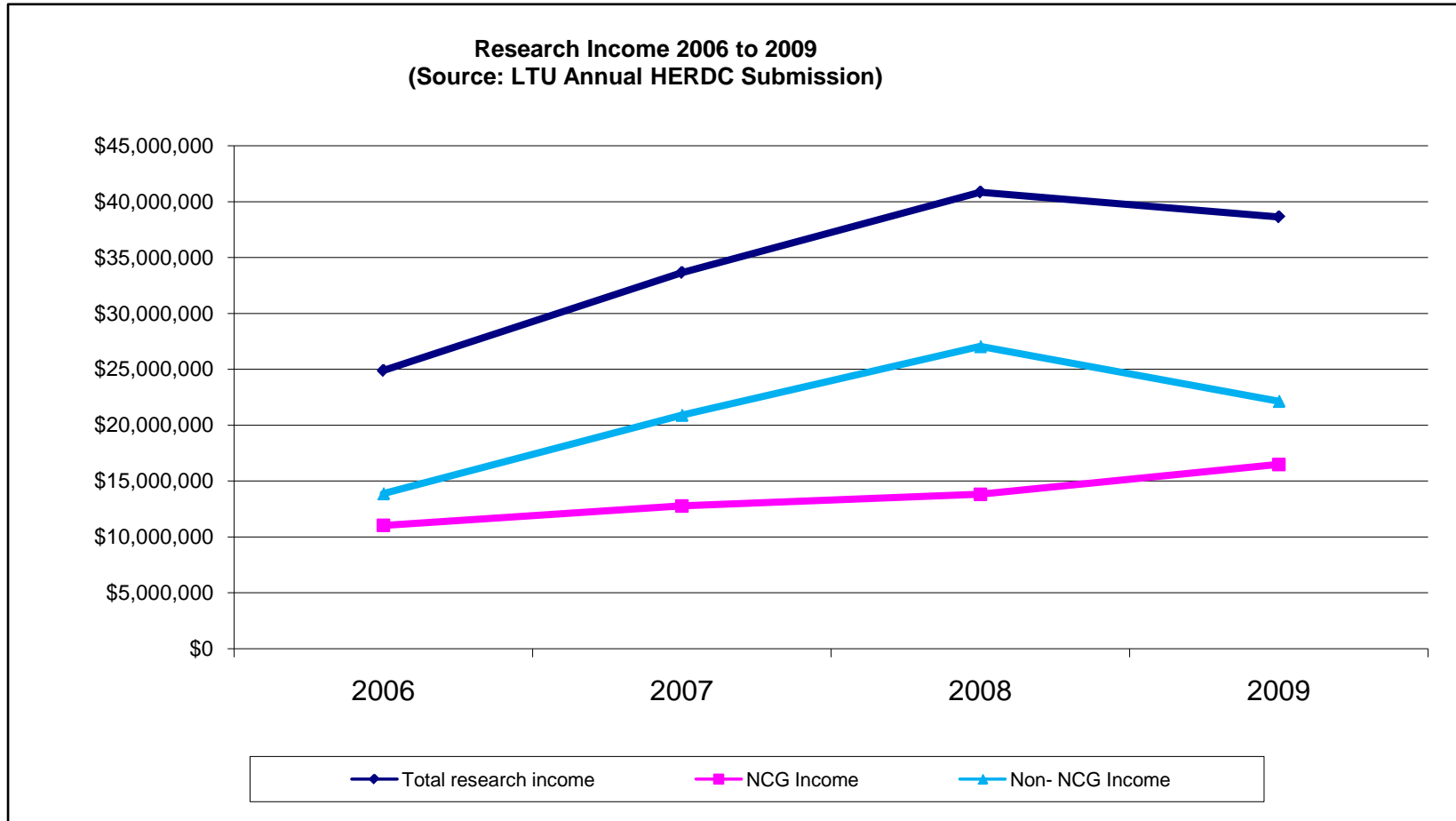
**La Trobe University Course Experience Questionnaire core scale
mean scores compared to national average - years 2006 - 2009**



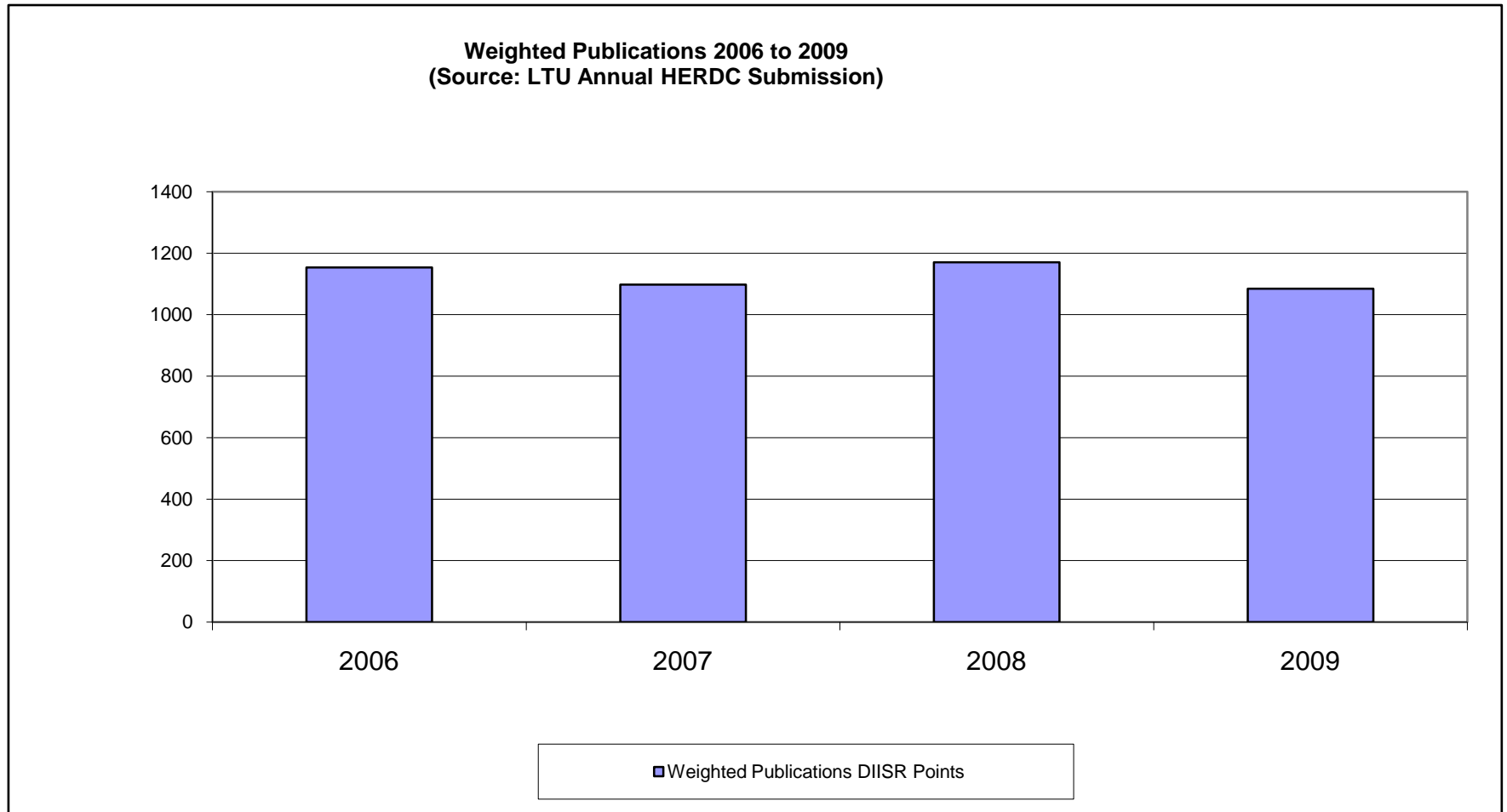
Source – Australian Graduate Survey 2006 - 2009

Research and Research Training

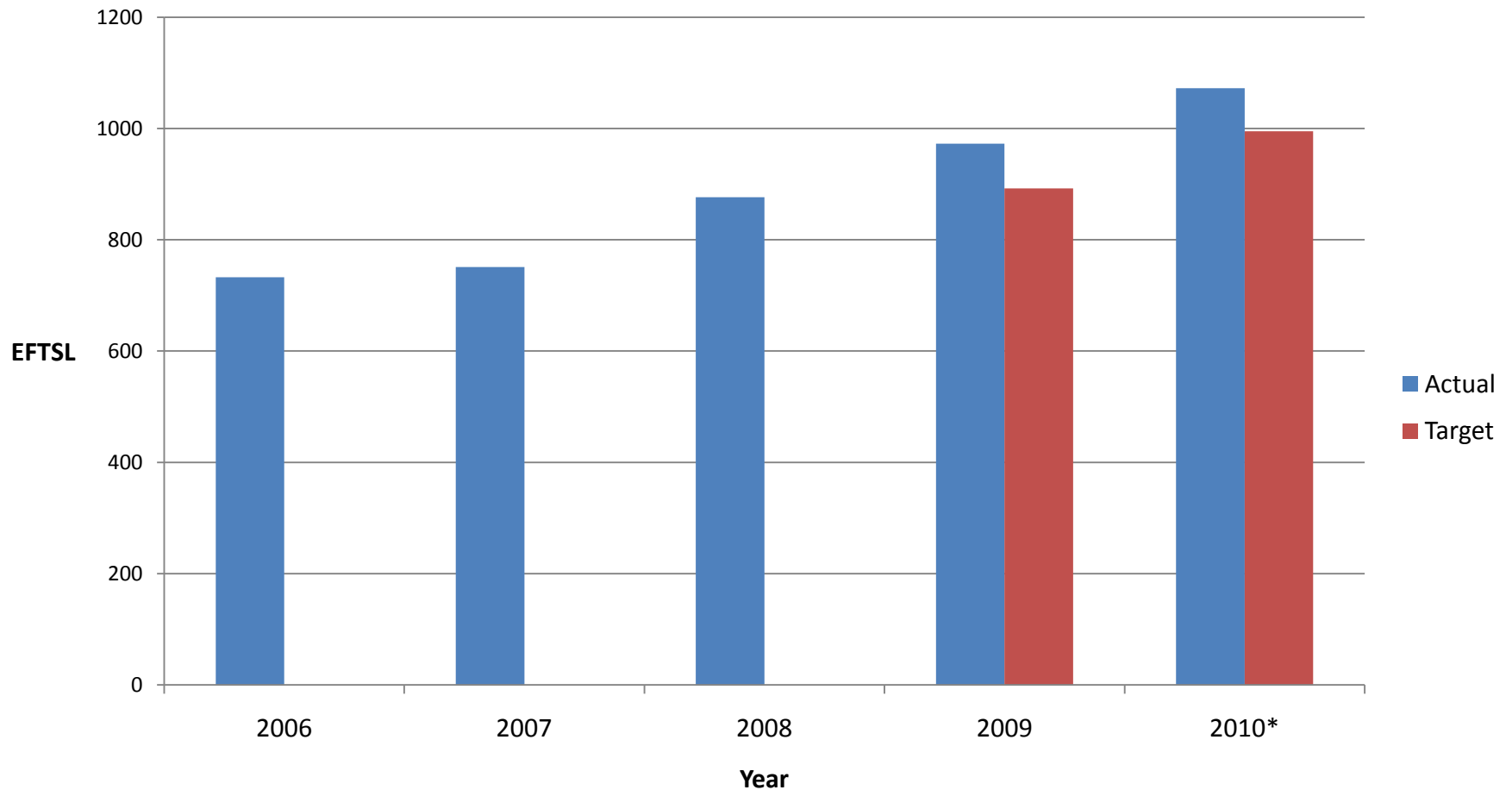
Research performance: Income 2006 - 2009



Research performance: Weighted publications 2006-2009



Higher degrees by research Student load (EFTSL) vs. target

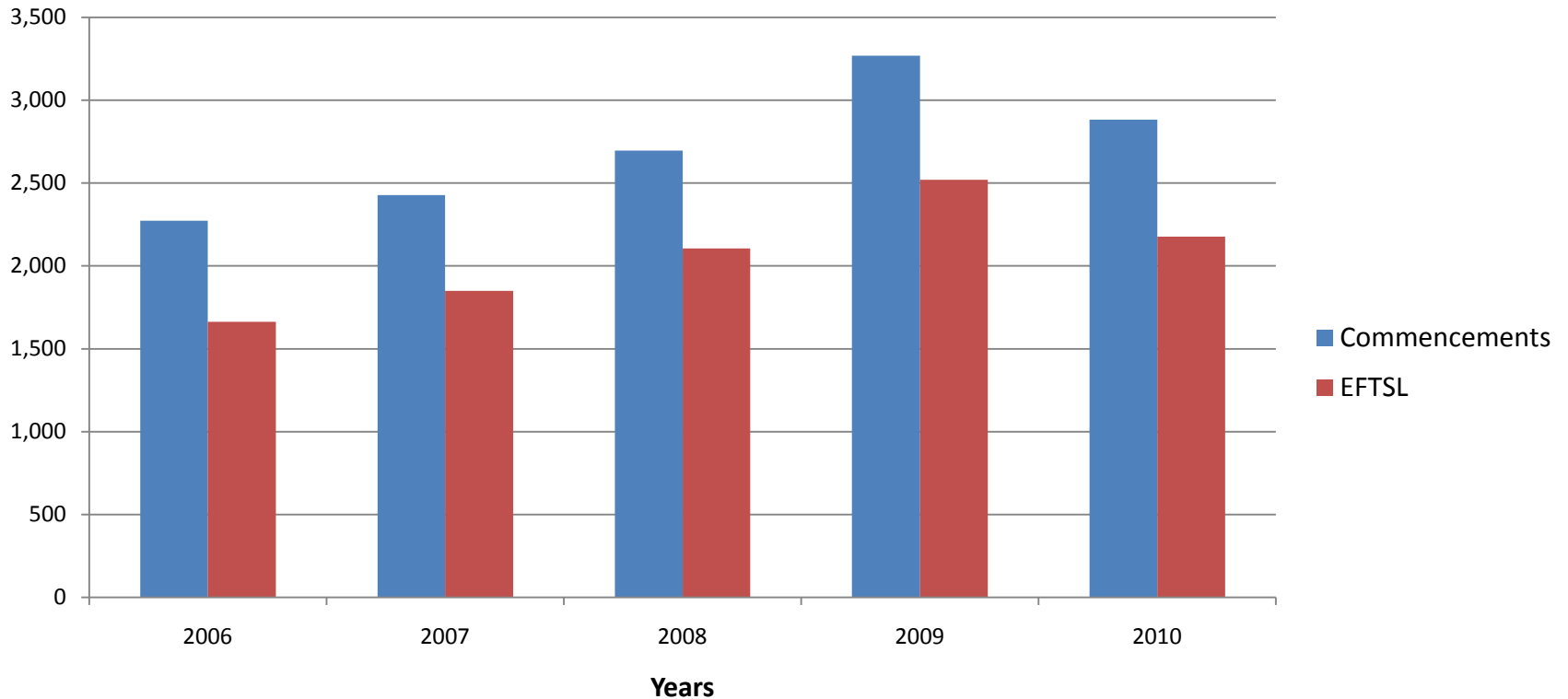


Source – Planning and Institutional Performance website

International

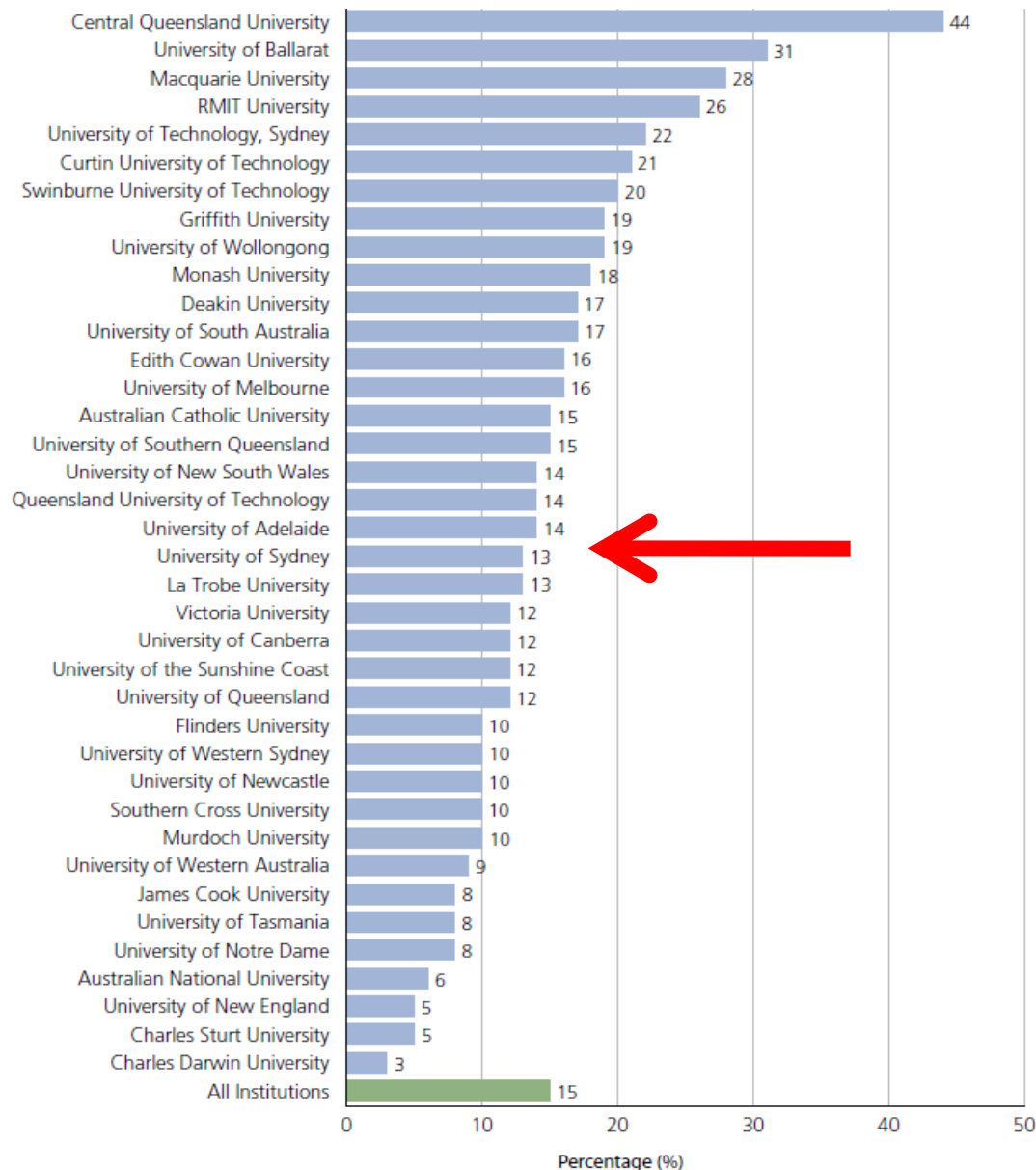
International Student commencements and EFTSL

**La Trobe University international student commencements
compared to EFTSL - years 2006 - 2010**



Source – Planning and Institutional Performance Unit website

Changing external environment: Overseas student fee revenue as a proportion of total revenue



Source: DEEWR Finance 2007

International Student Satisfaction

Satisfaction levels of La Trobe students with segments of their student experience, 2008 – 2010 as measured by the ISB (figure in bracket is for all Australian universities participating that year).

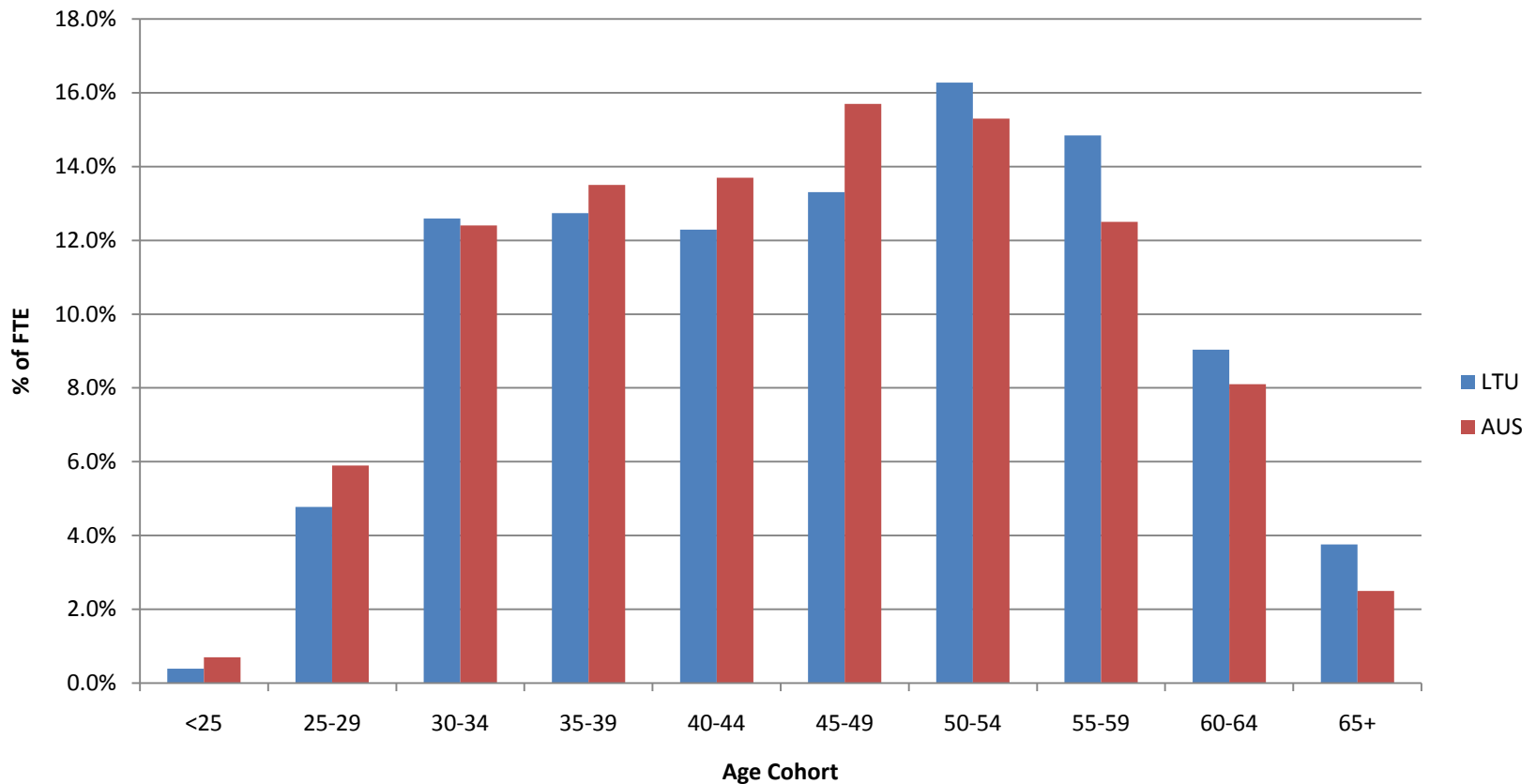
	2008 (12)	2009 (12)	2010 (29)
Learning Overall	87% (87%)	84% (86%)	83% (84%)
Living Overall	84% (85%)	87% (89%)	87% (86%)
Arrival Overall	82% (84%)	80% (85%)	87% (87%)
Support Overall	81% (83%)	81% (86%)	87% (86%)
Overall Satisfaction	Not Available	85% (87%)	87% (86%)
Would recommend LTU?	68%	72%	75%

Staff



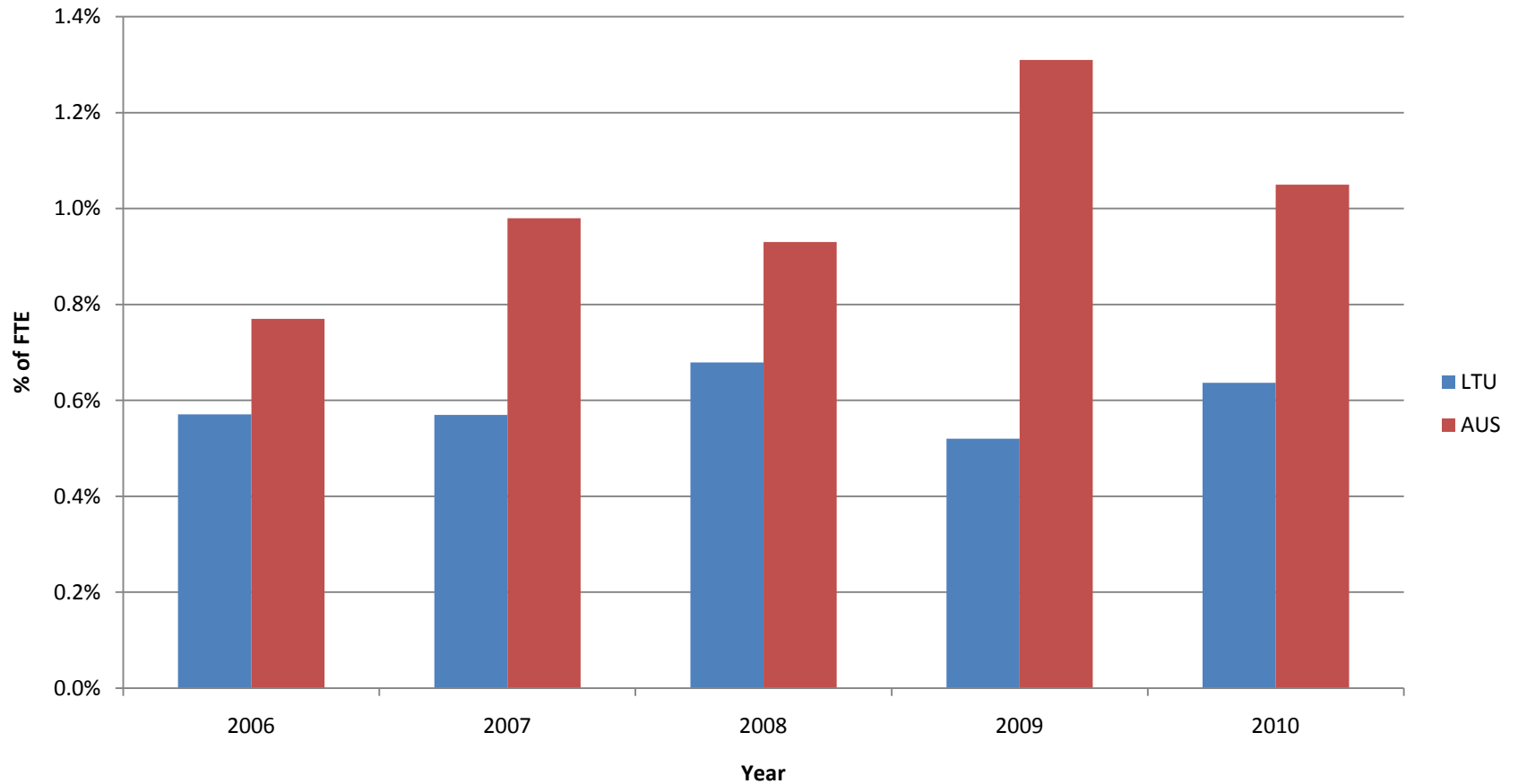
Academic Age Profile

LTU Academic Staff Age Profile as at 30 September 2010



Indigenous Employment

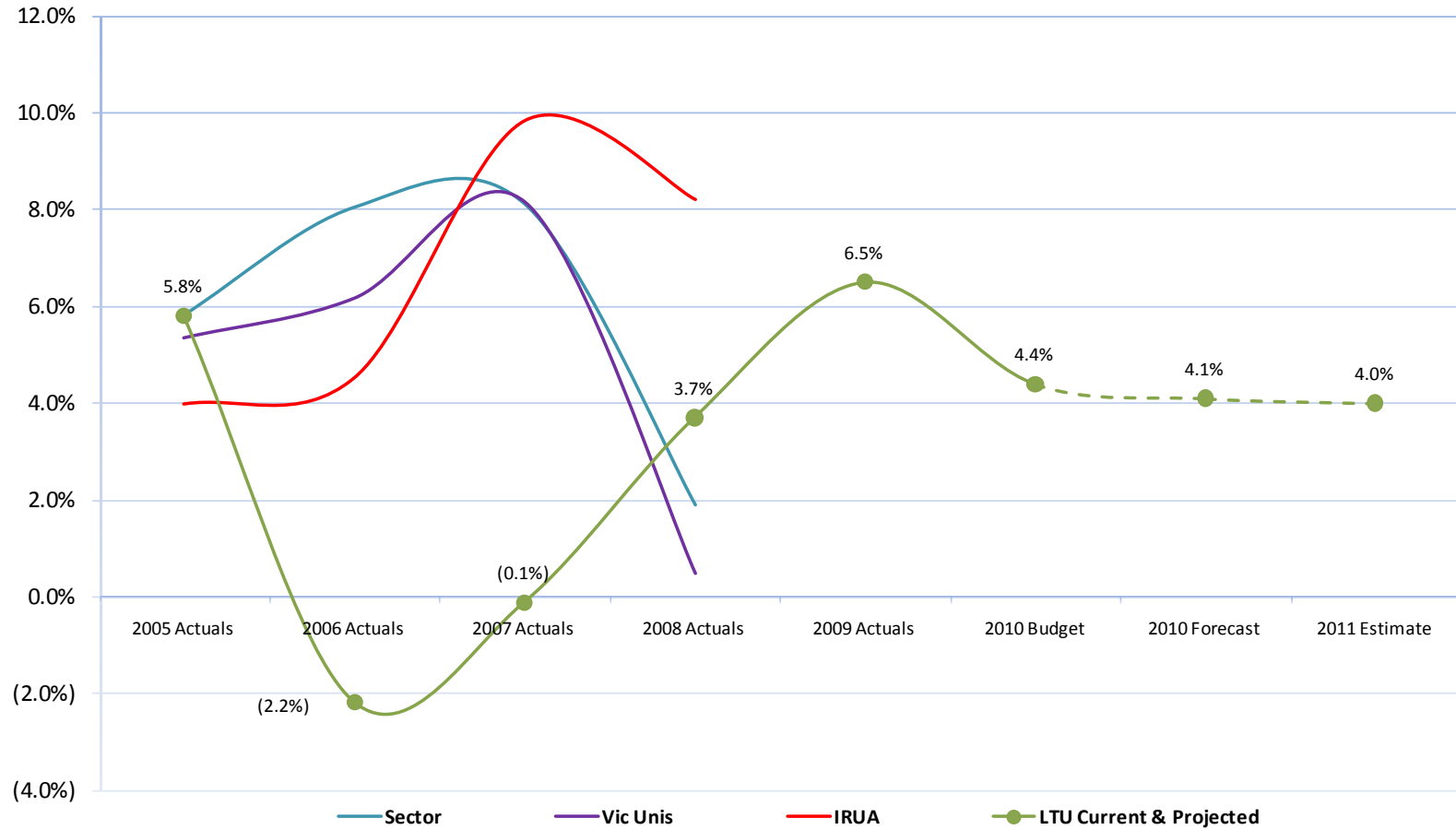
Indigenous Staffing (2006 - 2010)



Finance

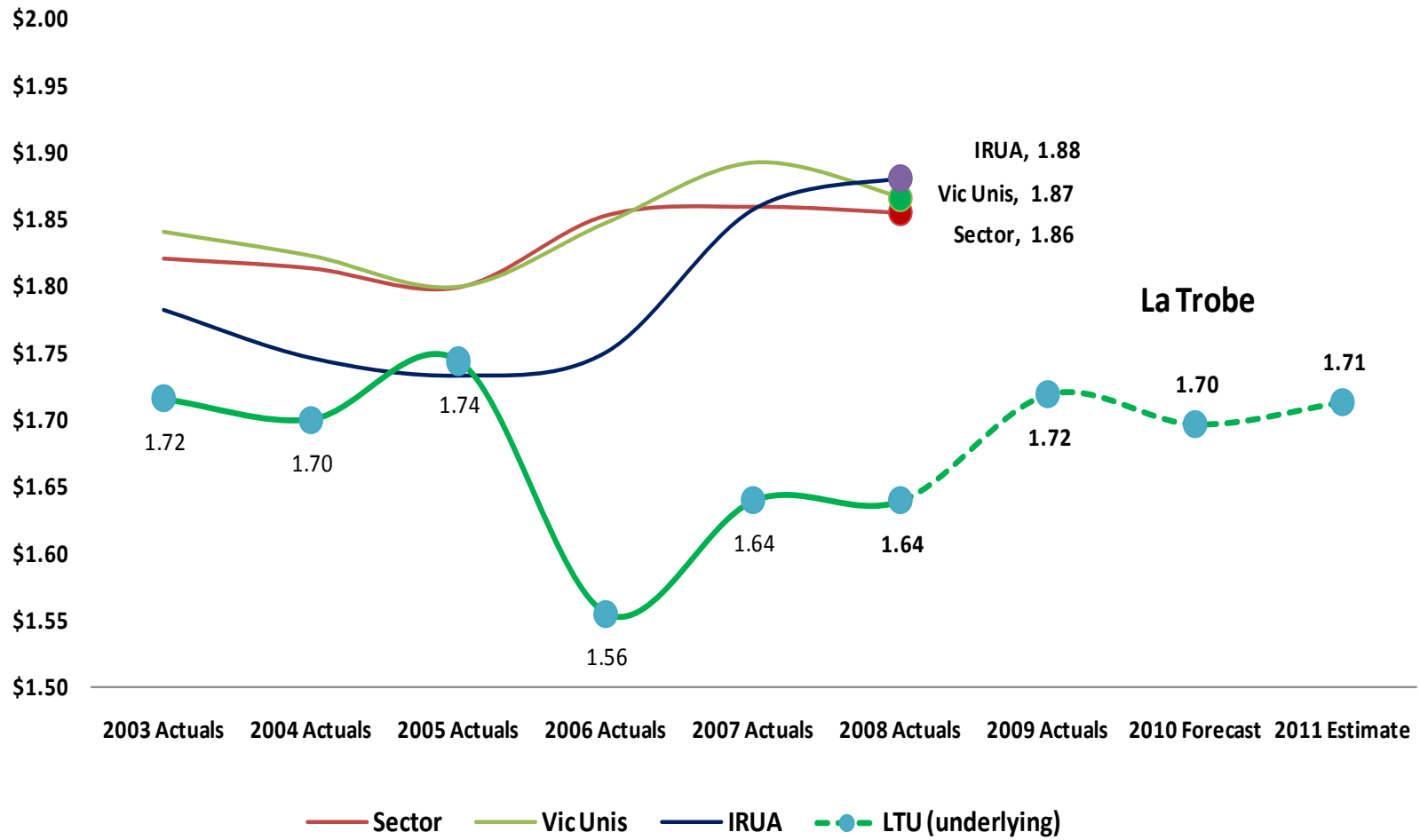


Underlying Operating Margin



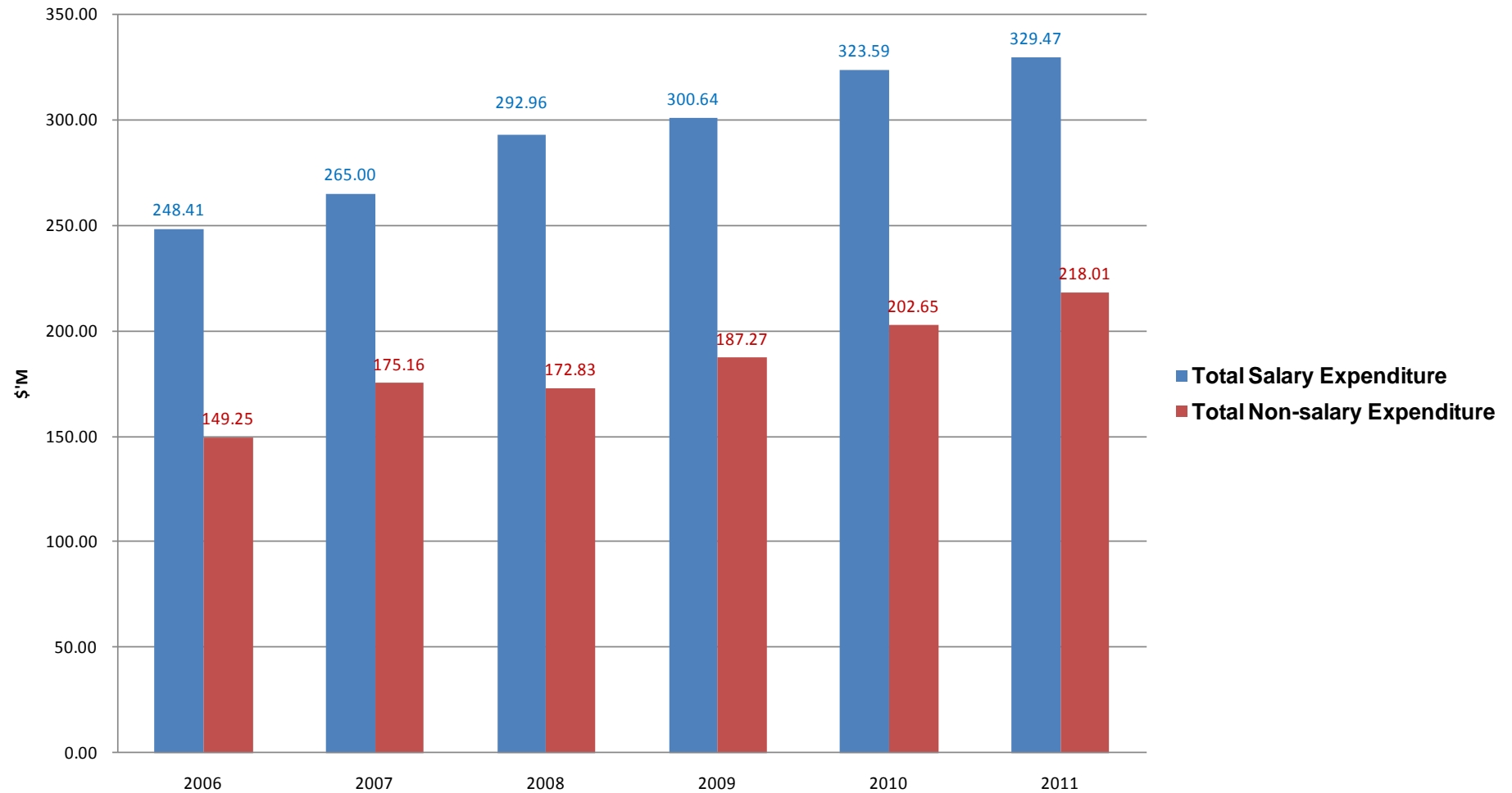


Revenue Earned Per Staff Dollar

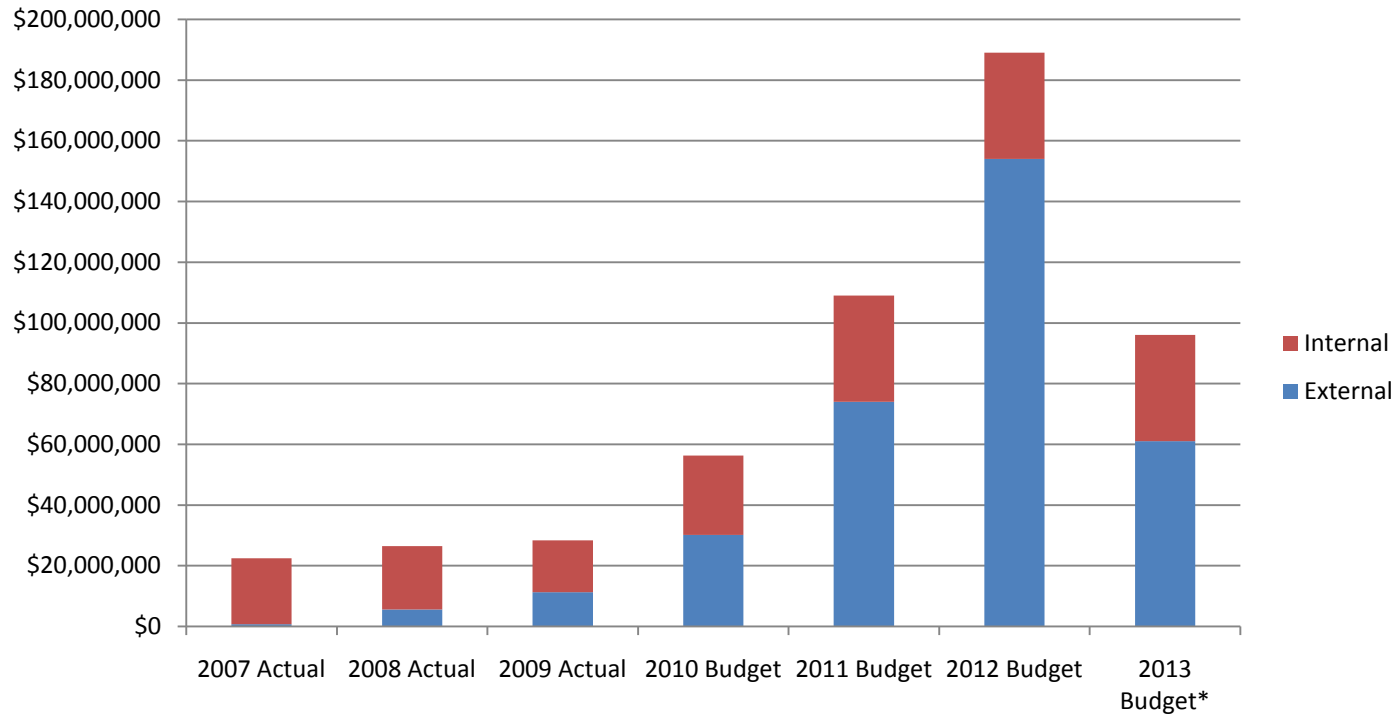




Total Salary and Non-Salary Expenditure 2006 - 2011



Internal and external capital infrastructure spending, 2007 – 2013 (budget)



There is a marked increase in the external funding of infrastructure, as well as increased University funding

Sustainability

Environmental Sustainability

- Energy consumption has decreased from 2006 levels by 13% (includes Melbourne, Bendigo, Wodonga)
- Water consumption has decreased from 2006 levels by 39% (includes Melbourne, Bendigo, Wodonga)
- There has been a 5% decrease in single occupant vehicles to the Melbourne campus from 2009 survey data to 2010

Environmental Sustainability (cont.)

- More than 10% of the total waste and recycling produced on Melbourne, Bendigo and Wodonga campuses was recycled in 2009.
- Recycled 20 tonnes in 2010, 5 tonnes of electronic waste in 2009, 7 tonnes in 2008
Approximately 10,000 fluorescent tubes recycled annually
- Achieved State Government WasteWise accreditation at Bronze level in 2007 and Silver level in 2009

Administrative Reform

Administrative Reform – Objectives & Achievements

- ***Objective:***

- Improve administrative/ professional/technical services – to support academic purpose

- ***Achievement:***

- ✓ Functional reviews completed in 9 of 10 functions
- ✓ Organisational & role changes completed or well progressed in most areas

Administrative reform – objectives & achievements

- *Objective: re-balance staffing ratio to 50:50 professional/technical: academic*
 - ✓ achieved – ratio currently 51:49 - PRC review/approval for “staffing envelope” variation
- *Objective: reduce administrative/professional silos*
 - ✓ significant changes achieved – more embedding & fine tuning to be done
- *Objective: build & embed a service culture*
 - ❖ more work required – both practical service provision & service culture

The future ... ?



Cambridge

COLIN BROWN
JACK GRIMSTON

CAMBRIDGE University is drawing up plans to go private because it claims proposed rises in tuition fees do not go far enough to enable it to compete with the American Ivy League.

Officials told senior MPs privately last week that independence could be the only way for Cambridge to secure its global standing in the face of savage cuts in state funding and limits on the amount it can keep from tuition fees.

The move would require Camb-

ridge to provide money the state or pays the university. Cambridge £12,000 (\$19,000) if a recommendation a member of the university headed an independent higher education the £3290 a year proposed. The proposed T would make

Cambridge ing university Browne levy University

